

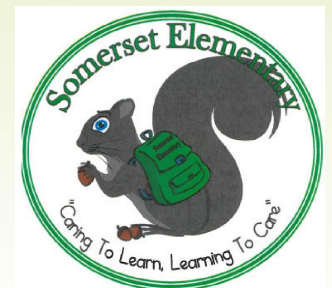
State of the School

**Annual Summary of Data and Results
leading into the 2018- 2019 School Year**

Somerset

Elementary School

October 25, 2018

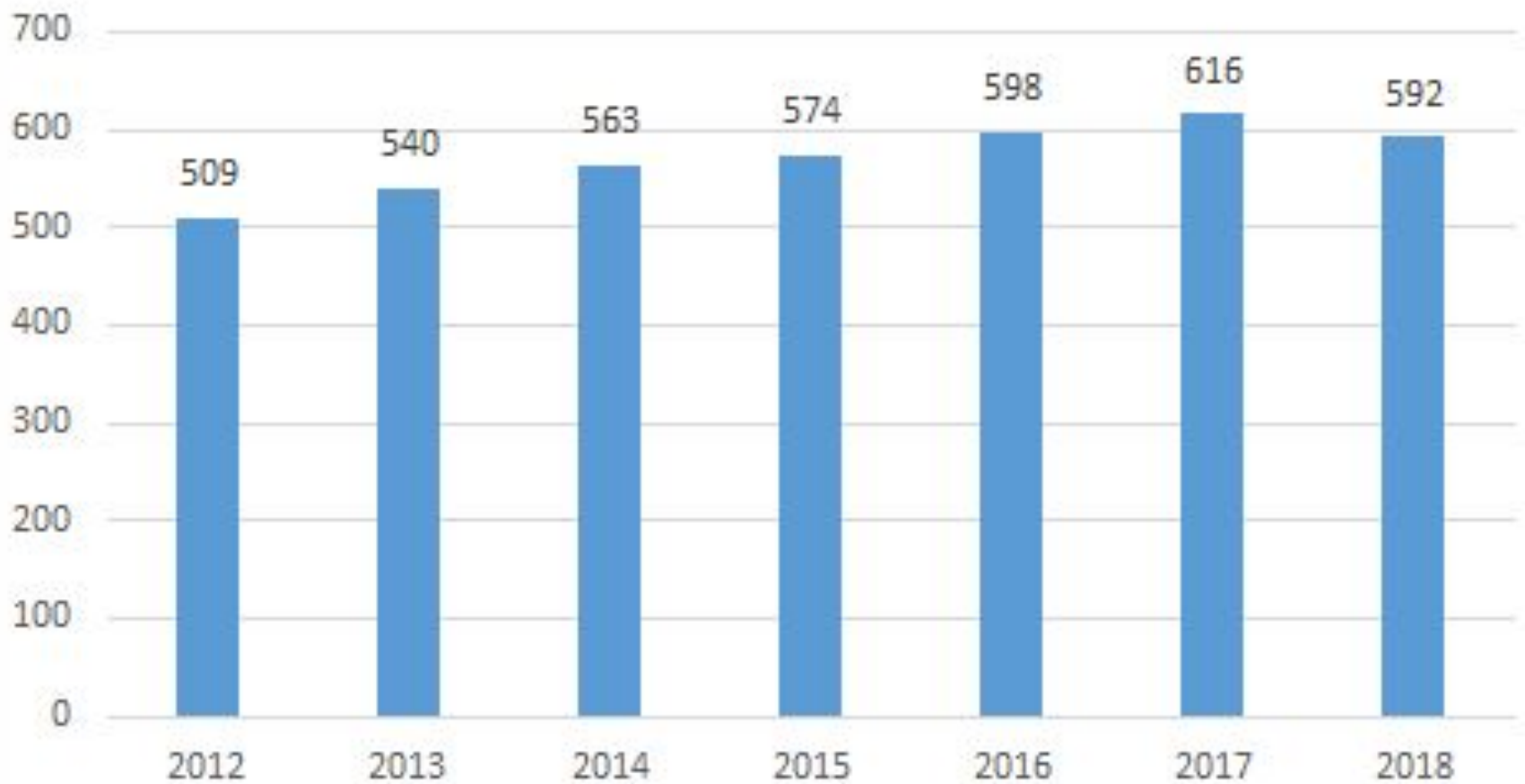


Somerset ES Performance Data

- Enrollment Trends
- Population Demographics
- Reading Benchmarks
- MCPS Evidence of Learning (EOL) Data
- PARCC Results



Enrollment Trends

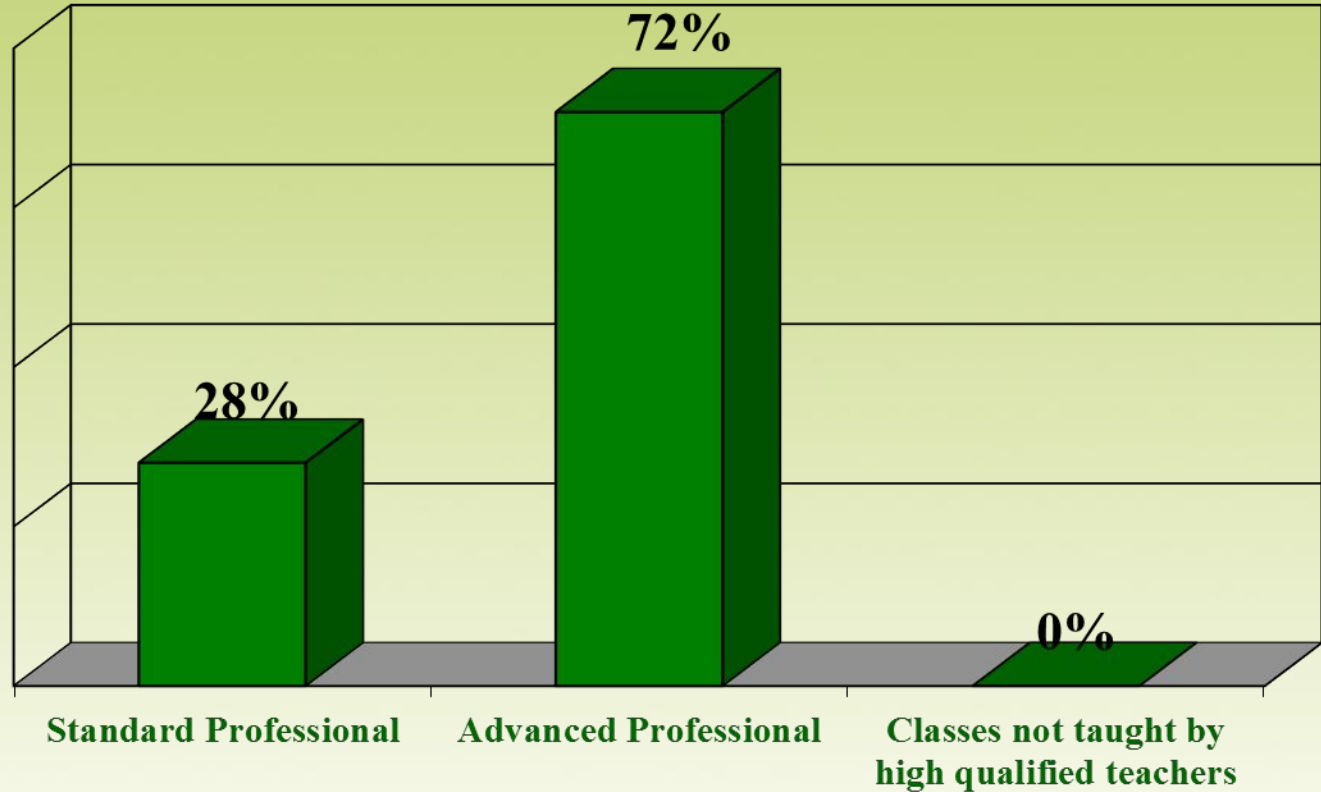


Class Size by Grade Level

Grade Level	MCPS Student/Teacher Ratio	Number of Students	Class Size
Kindergarten	25:1	93	18, 19, 20, 20
1st Grade	27:1	107	24, 24, 24, 24
2nd Grade	27:1	115	27, 27, 28, 28
3rd Grade	27:1	102	28, 28, 28, 29
4th Grade	29:1	95	26, 27, 27, 27
5th Grade	29:1	86	22, 22, 22, 23

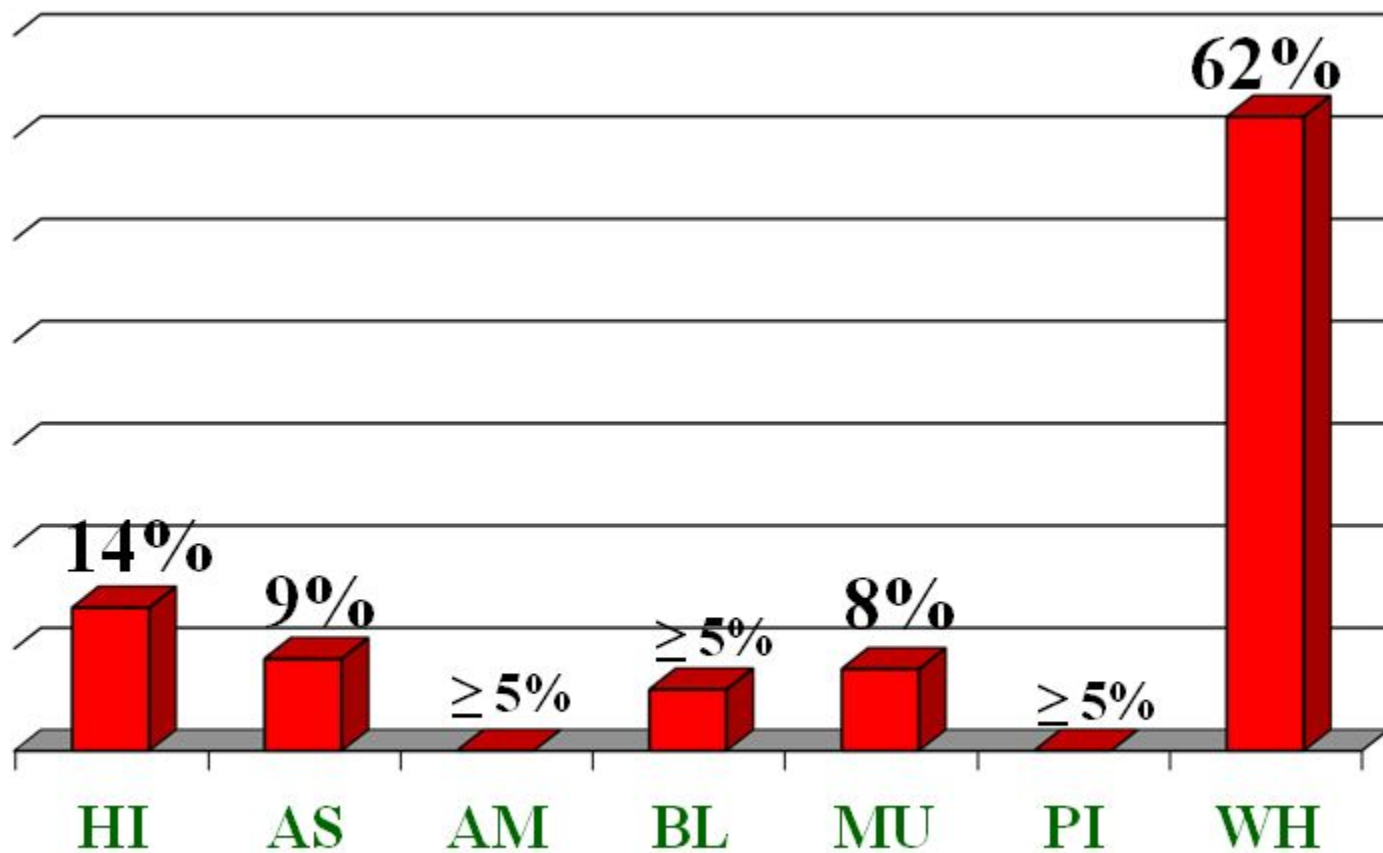
Teacher Qualifications

2018 - 2019



Student Demographics

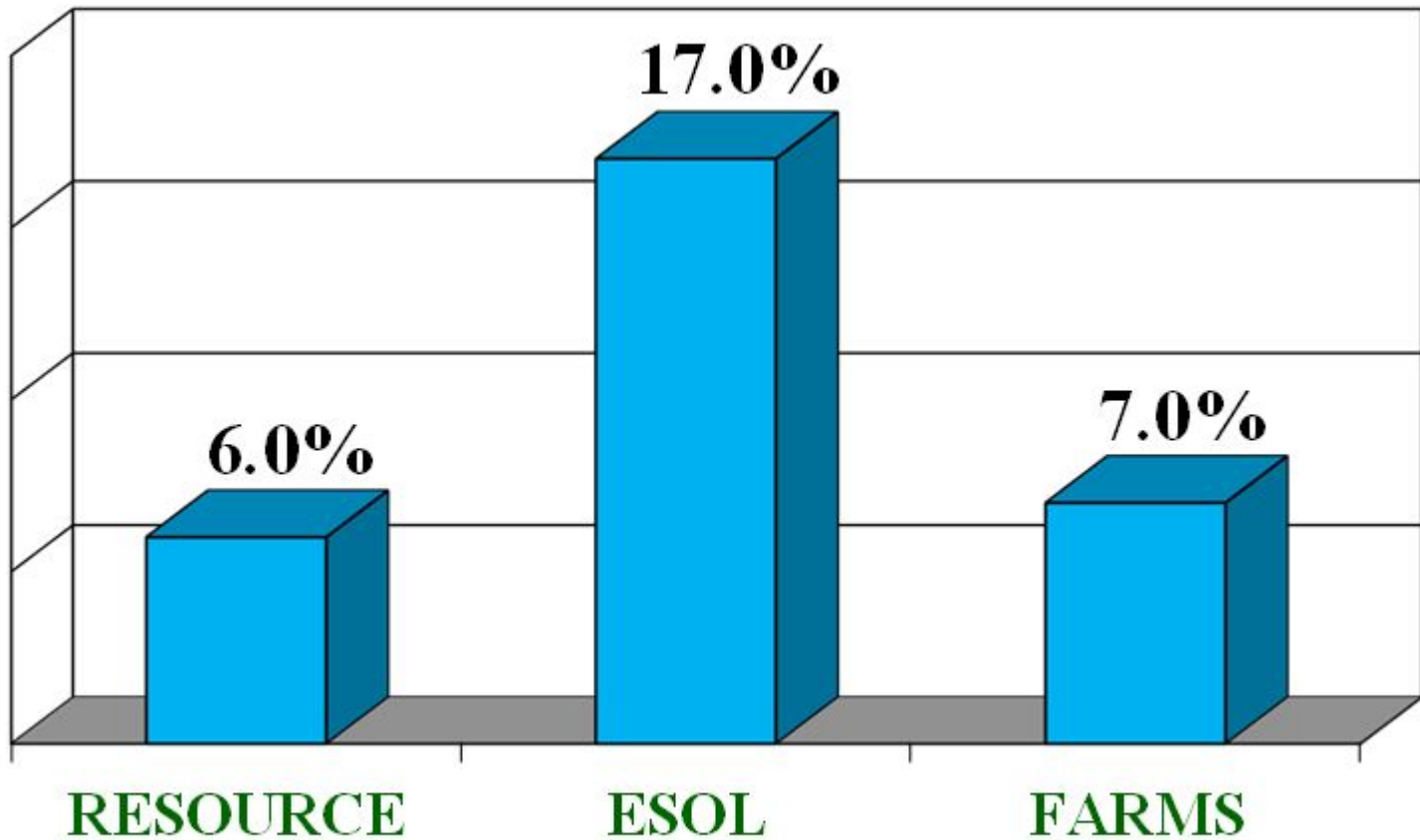
2017-2018



Demographic Data

Special Populations

2017-2018



Reading Benchmarks

Reading Targets - Text Level Chart: K-2

Grade level	End of First Quarter	End of Second Quarter	End of Third Quarter	End of Fourth Quarter
Kindergarten	Level 1-2	Level 2-3	Level 3-4	Level 4-6
First Grade	Level 5-7	Level 8-11	Level 12-15	Level 16
Second Grade	Level J	Level K	Level L	Level M

Grade Level Bands – Lexile Ranges: 3-5

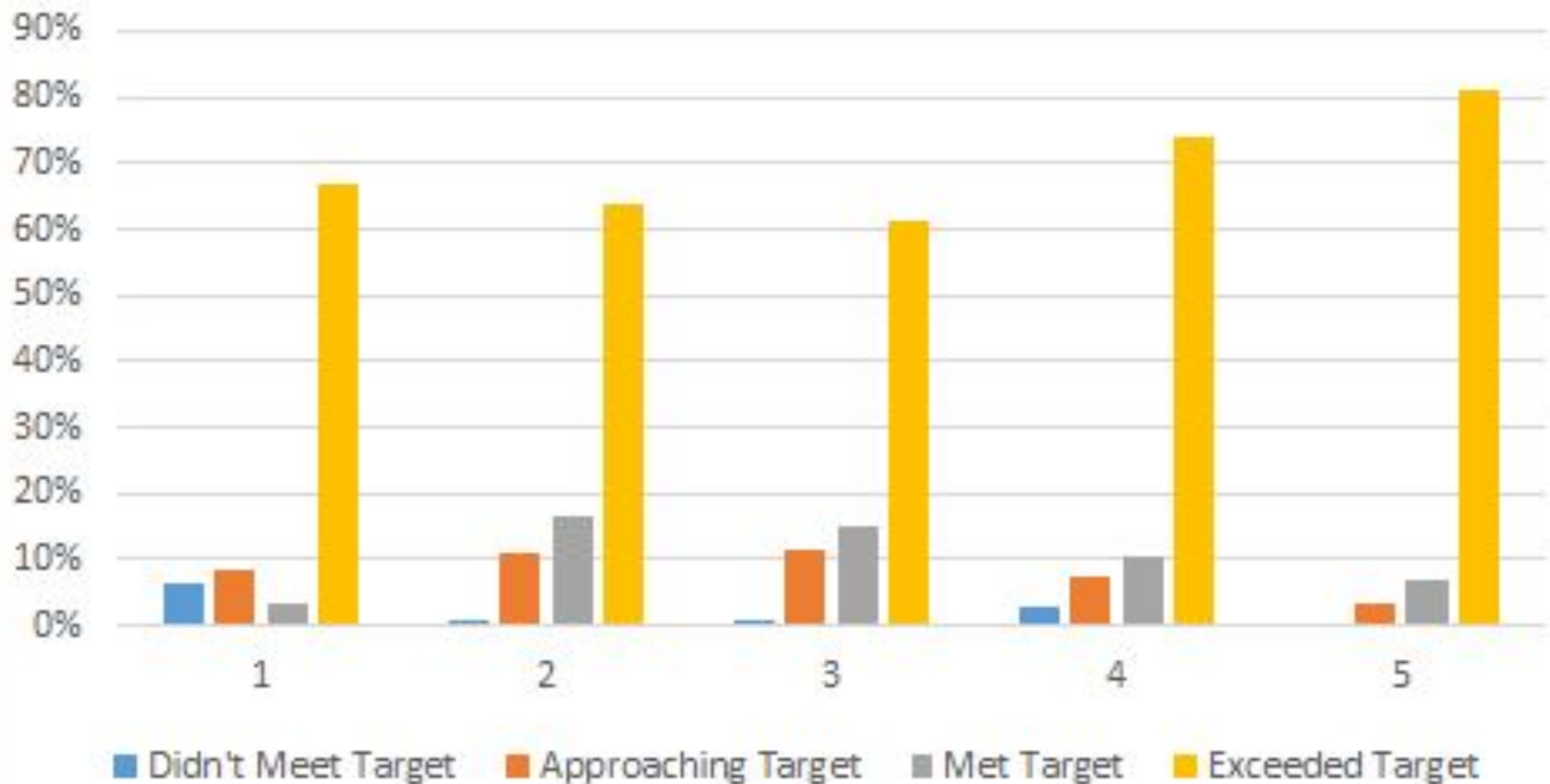
Grade level	End of First Quarter	End of Second Quarter	End of Third Quarter	End of Fourth Quarter
Third Grade	520 – 820 L			
Fourth Grade	740 – 940 L			
Fifth Grade	830 – 1010 L			

EOL Data Monitoring

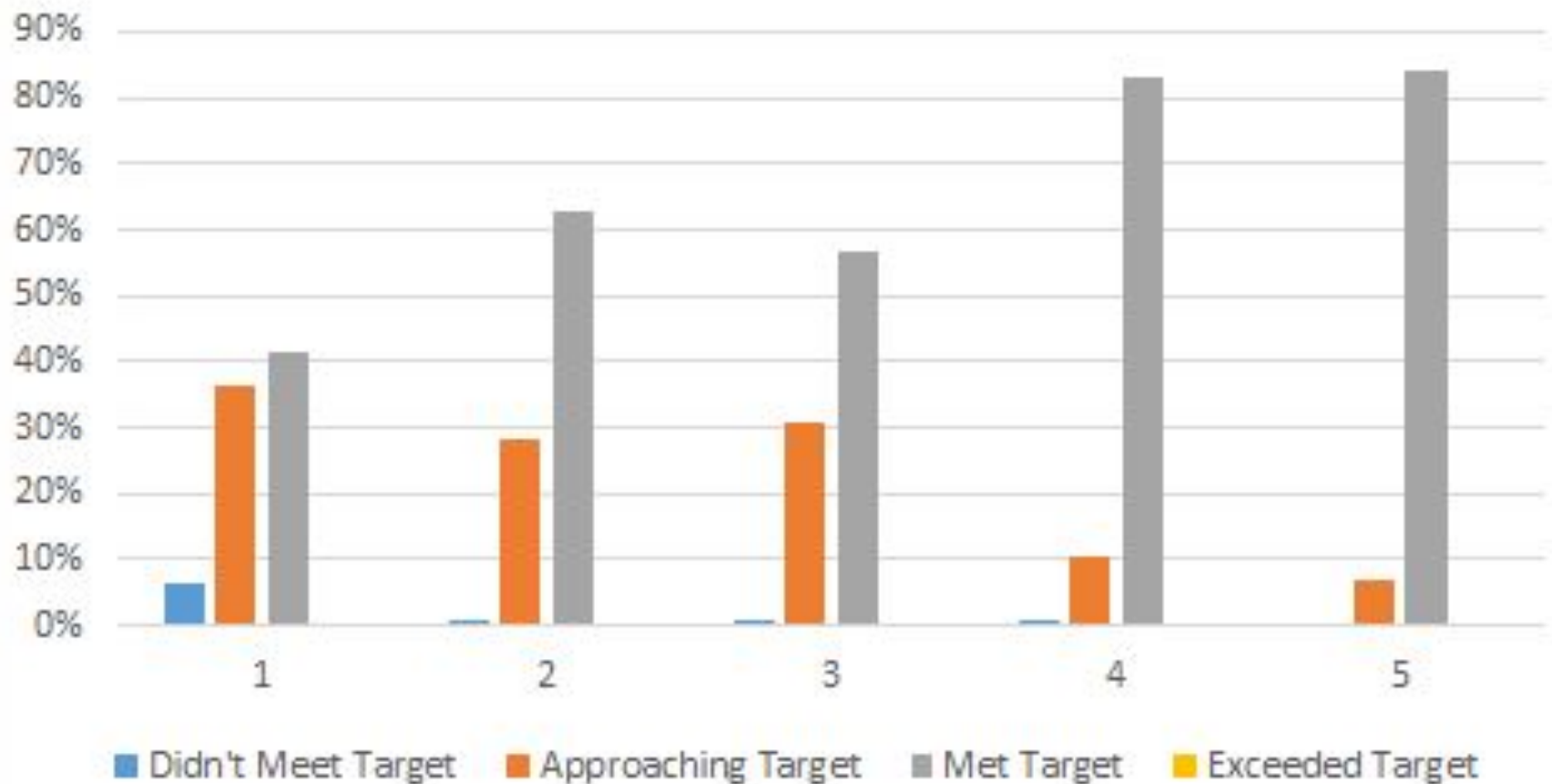
	Literacy Milestone	Math Milestone
Classroom Level	End of Year P in Reading <u>or</u> Writing (K-1) End of Year B in Reading or Writing (2-5)	End of year P in Math (K-1) End of Year B in Math (2-5)
School/District Level	Instructional Reading Level at or above end of year benchmark	
External Level	Instructional Reading Level at or above end of year benchmark (K-2) Pass EOY Map-R test (3-5) & PARCC Score 3 or higher	Pass EOY Map-P test (K-2) Pass EOY Map-M test (3-5) & PARCC Score 3 or Higher



Literacy EOL Targets for 2017-2018



Math EOL Target for 2017-2018



EOL Parent Guides

K-2:

[https://www.montgomeryschoolsmd.org/uploadedFiles/learning-journey/0273.19_MeasuringStudentProgressES_Kto2_PARENT_ENG_FINAL\(1\).pdf](https://www.montgomeryschoolsmd.org/uploadedFiles/learning-journey/0273.19_MeasuringStudentProgressES_Kto2_PARENT_ENG_FINAL(1).pdf)

3-5:

[https://www.montgomeryschoolsmd.org/uploadedFiles/learning-journey/0274.19_MeasuringStudentProgressES_3to5_PARENT_ENG_FINAL\(1\).pdf](https://www.montgomeryschoolsmd.org/uploadedFiles/learning-journey/0274.19_MeasuringStudentProgressES_3to5_PARENT_ENG_FINAL(1).pdf)



PARCC Data Review

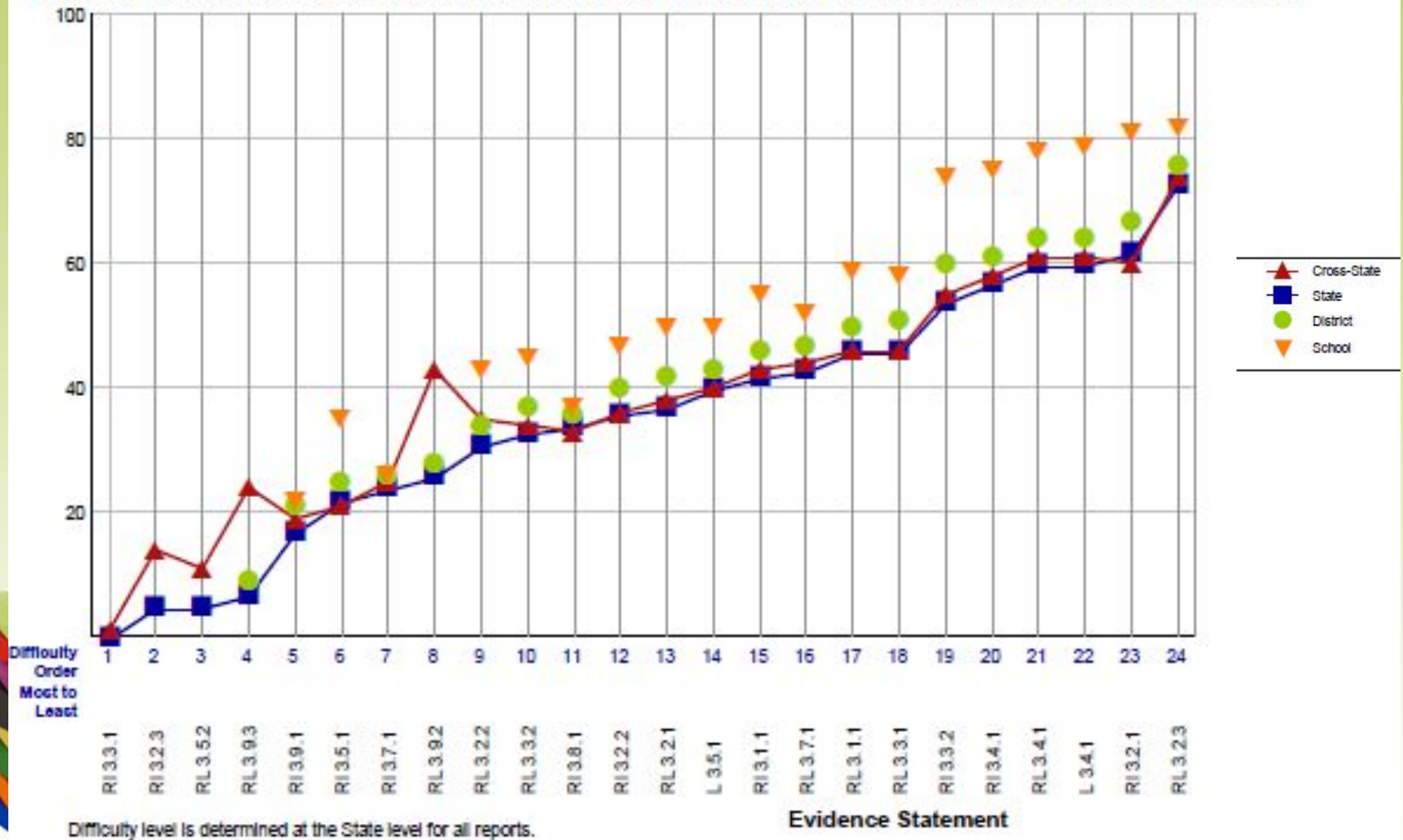


ENGLISH LANGUAGE ARTS / LITERACY

Grade 3 Assessment, 2017–2018

Students with Valid Scores (115)

Purpose: This report presents the average percent correct by Evidence Statement for school, district, state and Cross-State.



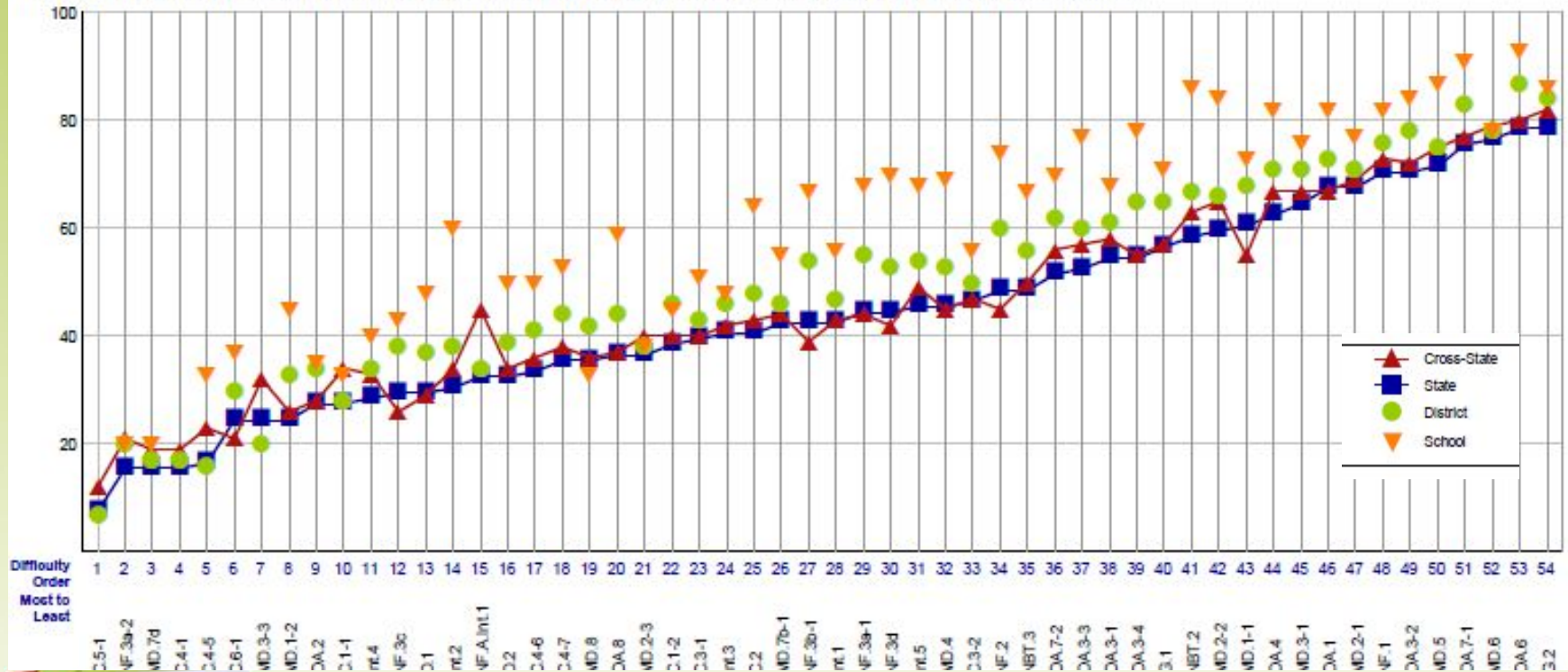
Difficulty level is determined at the State level for all reports.

MATHEMATICS

Grade 3 Assessment, 2017–2018

Students with Valid Scores (121)

Purpose: This report presents the average percent correct by Evidence Statement for school, district, state and Cross-State.

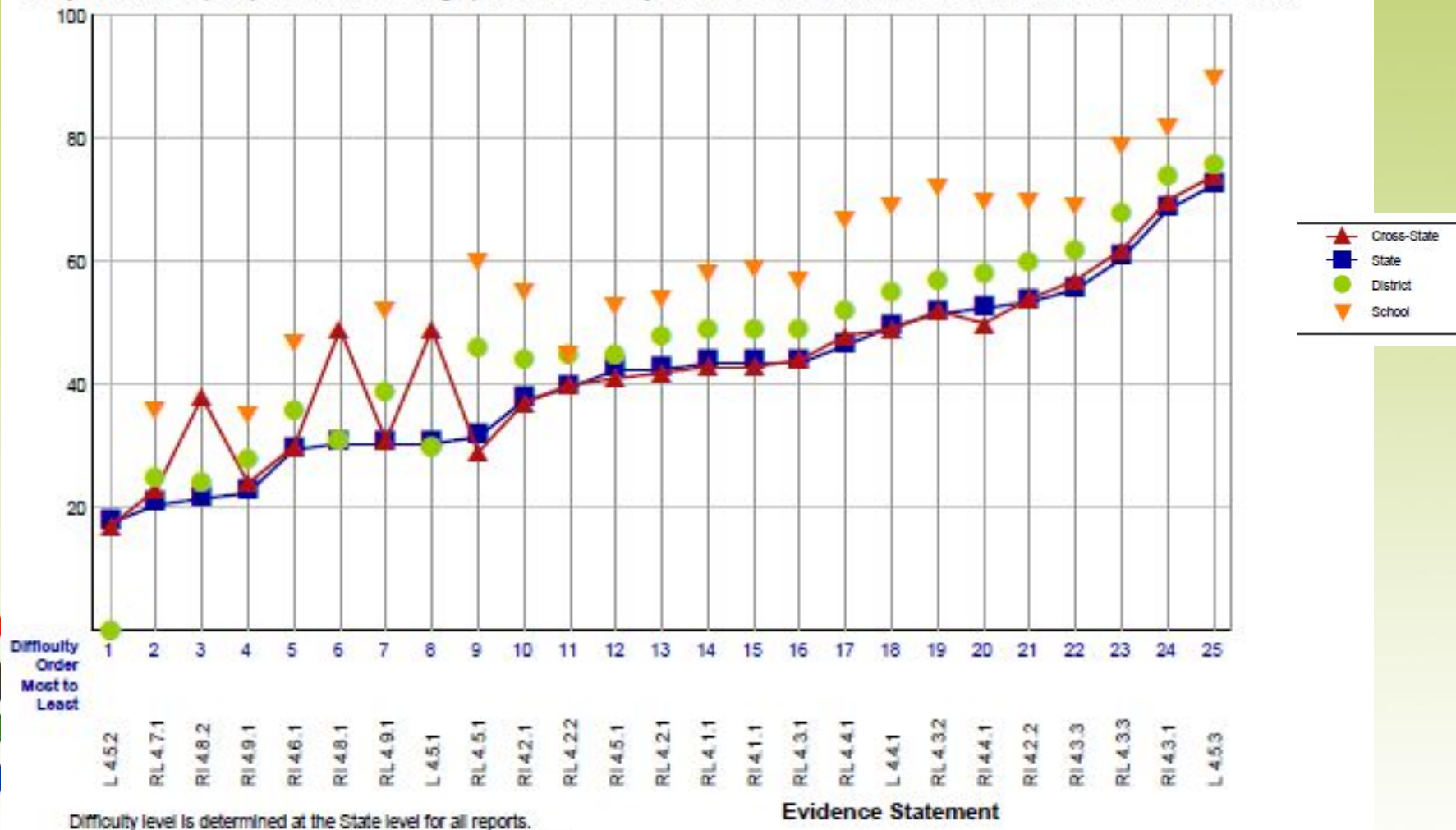


ENGLISH LANGUAGE ARTS / LITERACY

Grade 4 Assessment, 2017–2018

Students with Valid Scores (86)

Purpose: This report presents the average percent correct by Evidence Statement for school, district, state and Cross-State.



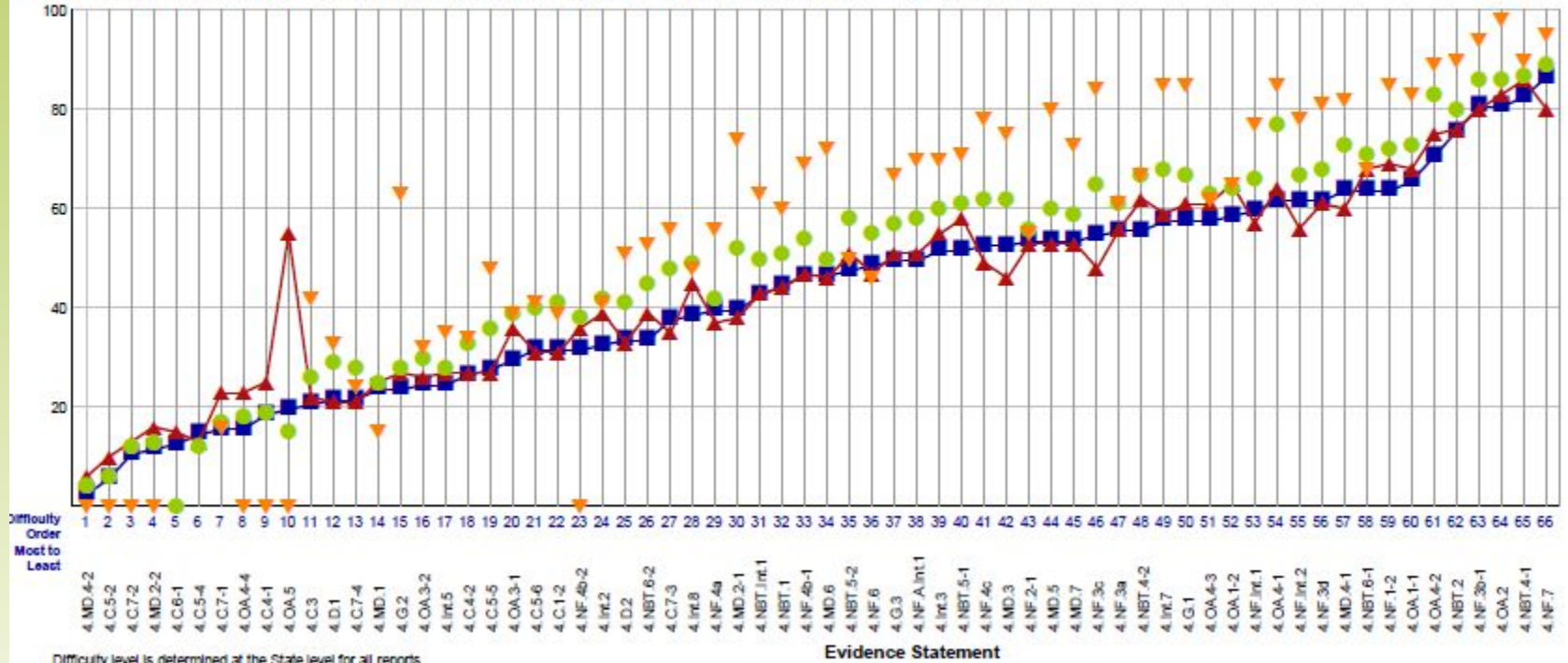
Difficulty level is determined at the State level for all reports.

MATHEMATICS
Grade 4 Assessment, 2017–2018

- ▲ Cross-State
- State
- District
- ▼ School

Students with Valid Scores (87)

Purpose: This report presents the average percent correct by Evidence Statement for school, district, state and Cross-State.



Difficulty level is determined at the State level for all reports.

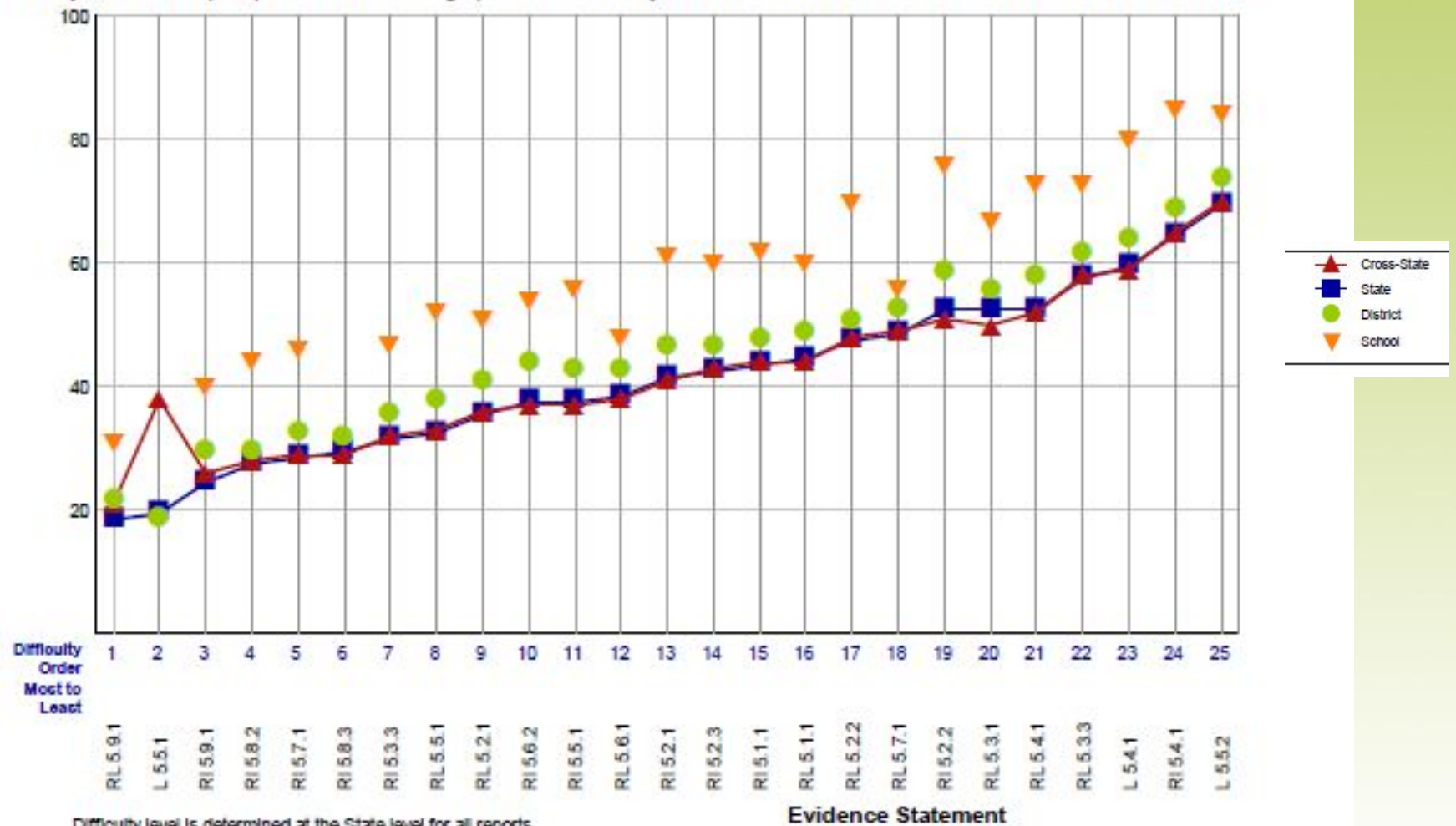


ENGLISH LANGUAGE ARTS / LITERACY

Grade 5 Assessment, 2017–2018

Students with Valid Scores (90)

Purpose: This report presents the average percent correct by Evidence Statement for school, district, state and Cross-State.



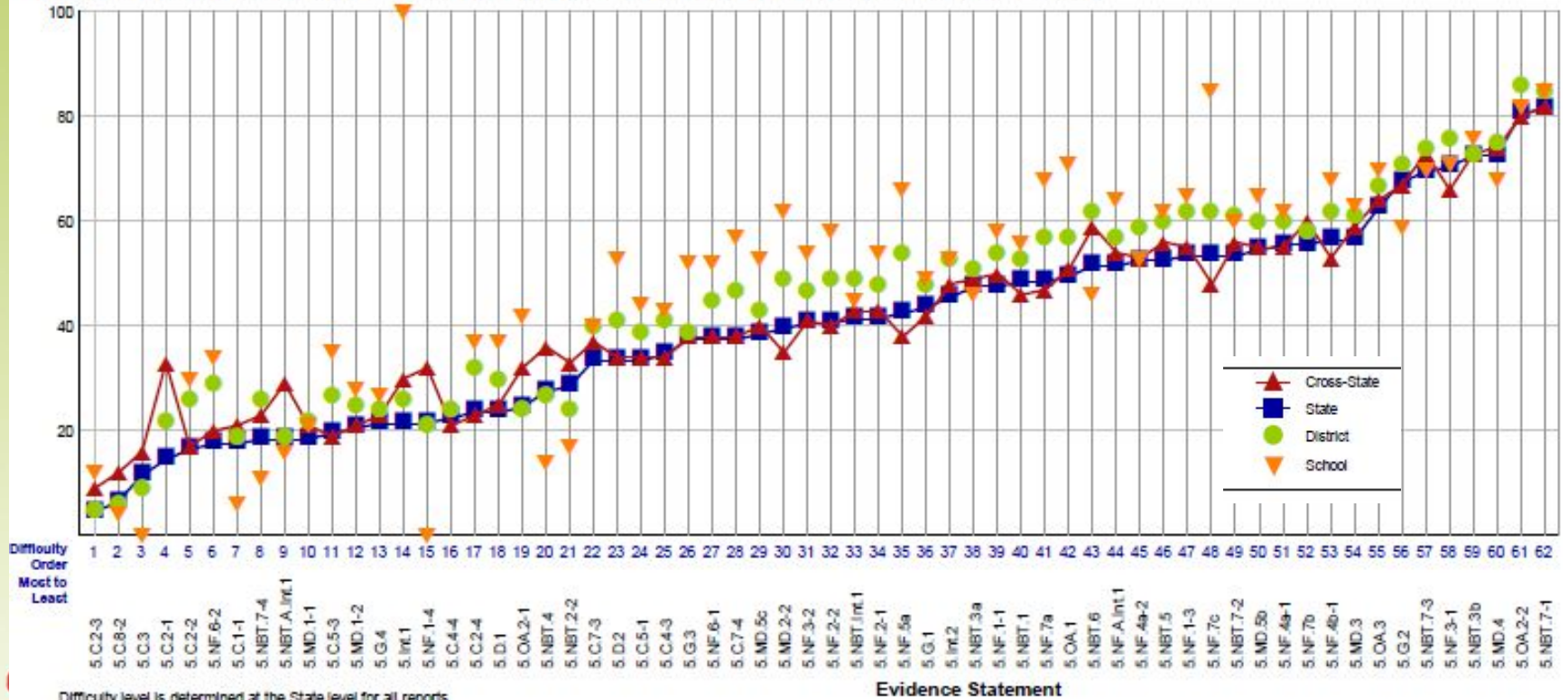
Difficulty level is determined at the State level for all reports.

MATHEMATICS

Grade 5 Assessment, 2017–2018

Students with Valid Scores (95)

Purpose: This report presents the average percent correct by Evidence Statement for school, district, state and Cross-State.



Difficulty level is determined at the State level for all reports.



**Thank you for
coming, have a
wonderful
evening!**



**Somerset
Elementary School**

