

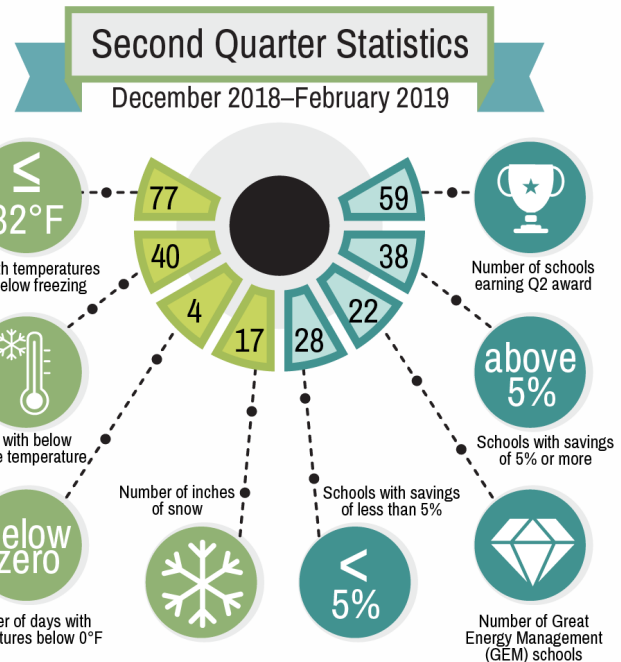


2018–2019 Second Quarter ENERGY AWARDS

The **SCHOOL ENERGY AND RECYCLING TEAM (SERT)** program is pleased to announce that our schools made significant efforts to save energy during the second quarter of the 2018–2019 academic year (December 2018–February 2019). During these challenging budgetary times, any avoidable operating costs will have a positive impact on the educational initiatives of Montgomery County Public Schools.

Despite extremely cold weather conditions, including several days with below-freezing temperatures, the 59 schools listed below saved energy or demonstrated great energy management. We applaud all of our students and staff for their commitment to conservation and sustainability and congratulate them for earning energy awards.

Schools achieving top energy cost avoidance as compared to their baseline usage are eligible to receive quarterly monetary awards. The baseline for each school is an average use of their prior five school years for the same quarter. As each school had an active SERT program during this time frame, the reported energy use and cost avoidance for each school represents the marginal savings over a baseline that includes the efforts of the SERT program. Schools without an established baseline are eligible to receive a monetary Great Energy Management award which is based on demonstrated active participation in the SERT program and energy-efficient behavior.



ELEMENTARY SCHOOLS

Bannockburn Elementary School
 Beall Elementary School
 Belmont Elementary School
 Bradley Hills Elementary School
 Brown Station Elementary School
 Rachel Carson Elementary School
 Cedar Grove Elementary School
 Chevy Chase Elementary School
 Cloverly Elementary School
 Cold Spring Elementary School
 Damascus Elementary School
 Farmland Elementary School
 Flower Hill Elementary School
 Fox Chapel Elementary School
 Gaithersburg Elementary School
 Georgian Forest Elementary School
 Goshen Elementary School
 Greencastle Elementary School
 Jones Lane Elementary School
 Lake Seneca Elementary School

Spark M. Matsunaga Elementary School
 Monocacy Elementary School
 New Hampshire Est. Elementary School
 Olney Elementary School
 Pine Crest Elementary School
 Piney Branch Elementary School
 Ritchie Park Elementary School
 Rock View Elementary School
 Bayard Rustin Elementary School
 Sherwood Elementary School
 Sligo Creek Elementary School
 Somerset Elementary School
 South Lake Elementary School
 Stone Mill Elementary School
 Summit Hall Elementary School
 Travilah Elementary School
 Twinbrook Elementary School
 Viers Mill Elementary School
 Woodlin Elementary School
 Wyngate Elementary School

MIDDLE SCHOOLS

John T. Baker Middle School
 Briggs Chaney Middle School
 Roberto Clemente Middle School
 Robert Frost Middle School
 Gaithersburg Middle School
 Lakelands Park Middle School
 Parkland Middle School
 Redland Middle School
 Rocky Hill Middle School
 Silver Spring International Middle School
 Westland Middle School
 White Oak Middle School

HIGH SCHOOLS

James Hubert Blake High School
 Clarksburg High School
 Damascus High School
 Walt Whitman High School
 Thomas S. Wootton High School

SPECIAL SCHOOLS

Stephen Knolls School
 Carl Sandburg Learning Center

