



EXPECT EXCELLENCE

On the horizon

September:



- 🍁 11 Back to School Night (see schedule below)
- 🍁 12 Lockdown/Shelter Drill 10:30 a.m.
- 🍁 13 PTA Back to School Fair – 6:30 p.m.
- 🍁 30 NO SCHOOL

BACK TO SCHOOL NIGHT

6:00-6:30

K-2/LFI First Session

6:35-7:05

K-2/LFI Second Session

7:05-7:35

3-5/LFI First Session

7:40-8:10

3-5/LFI Second Session

8:10

Closing/Dismissal

BIRTHDAY CELEBRATION POLICY

Celebration policy is as follows: Each child will receive a birthday pencil on his/her birthday (summer birthdays as well). NO FOOD (cupcakes, cakes, cookies, chips, candy etc.) will be shared with the class during lunch time or instructional time.

WATERS LANDING ELEMENTARY SCHOOL FAMILY NEWS

LANDING LEDGER

BACK TO SCHOOL NIGHT

We hope you will join us on **Wednesday, September 11th** for our Back-to-School Night for grades **Kindergarten, 1st, 2nd, 3rd, 4th, 5th grades and LFI**. Back-to-School Night will begin at **6:00 p.m.** for grades **K-2/LFI ONLY** followed by a second session at **6:35 p.m.** The first session for grades **3-5/LFI** will begin at **7:05 p.m.** followed by a second session at **7:40 p.m.** Each grade level will hold two classroom sessions in case you need to visit more than one classroom. During the classroom session, you will hear about the curriculum for your child's grade level, classroom routines, and a message from administration. You will also sign up for Parent/Teacher conferences.

SCHOOL RESOURCE OFFICER

The Montgomery County Police Department is working on building a positive relationship with the community. Our School Resource Officer is **Officer Russell Larson**. Some of our students have seen him at the SVHS football games! This is a great opportunity for our children to see that the police can be our friends. Officer Larson has joined us at our assemblies. If you happen to see the patrol car parked outside of our building, don't be alarmed. That means that Officer Larson stopped by to visit our building.

ARRIVAL/DISMISSAL

Please ensure all students arrive to school on time. Students are allowed in the building at **9:10 a.m.** for breakfast. The instructional day begins at **9:25 a.m.** Students who arrive after **9:25 a.m.** will

be marked tardy. School ends at **3:50 p.m.** Please ensure students are picked up immediately after school ends. There is limited adult supervision after school due to staff schedules and commitments. Please see the attached map for arrival, dismissal, and parking locations.

SAFETY & SECURITY

MCPS Safety and Security procedures require identification from all visitors. Please enter the building through the entrance on Waters Landing Drive. Once you have come in, please enter the main office and sign in at the main desk. When visiting the school, please ensure you bring your license. You will receive a visitor's sticker to wear on your clothing.

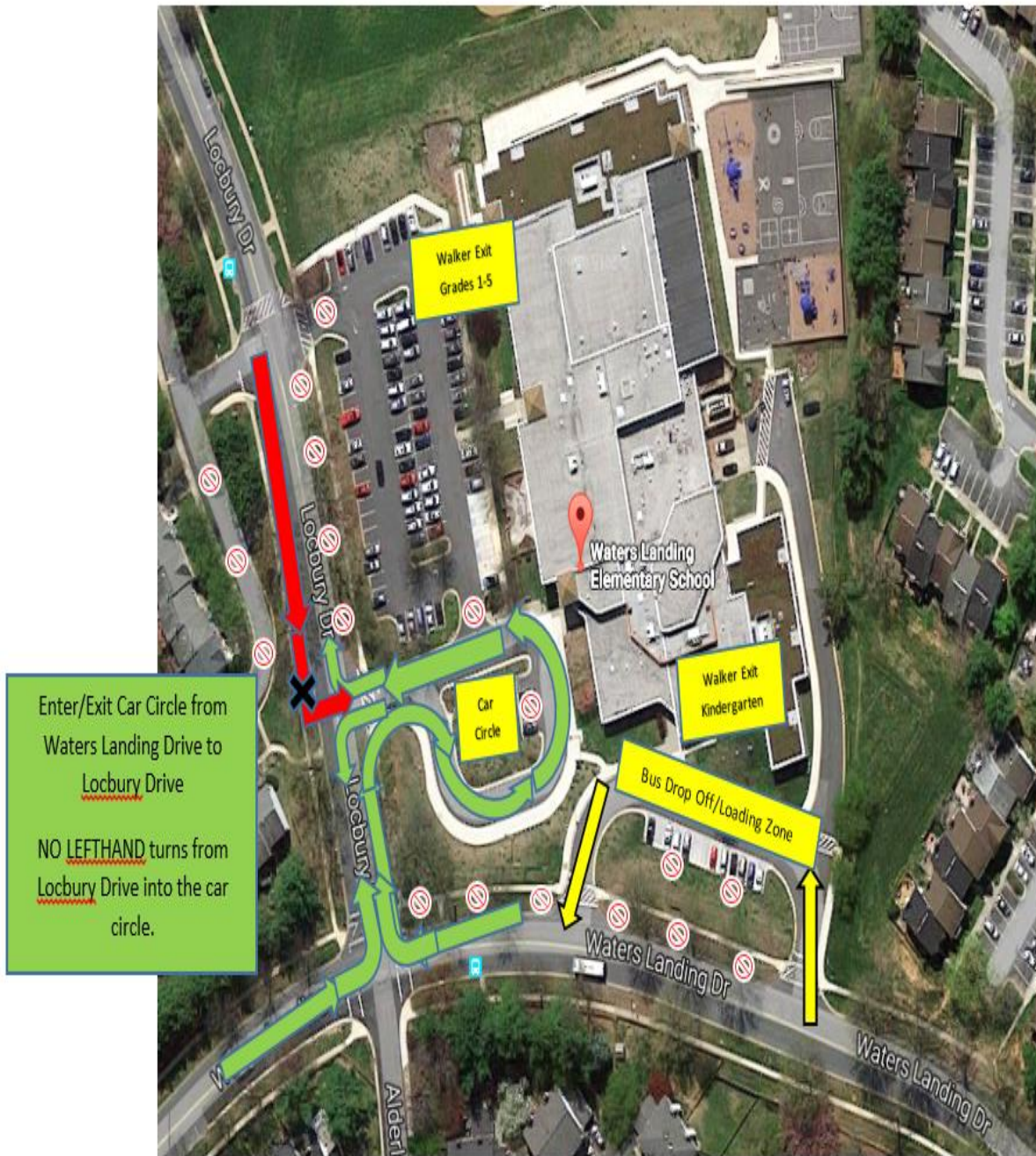
PTA MEMBERSHIP

Parents, if you're looking to get more involved in our school, join the PTA! (\$10) The class with the highest PTA participation rate will receive a party! Membership forms will come home with students this week. Return them to your child's teacher.

FREE AND REDUCED MEALS FORMS

Each family should have received a Free and Reduced Meals Form/Application. These forms should be returned only if you are applying for free or reduced meals. If you received free or reduced meals last year, you **MUST REAPPLY**. These students will only receive free or reduced meals until **OCTOBER 4** unless they are **re-approved**. You may also complete the forms online. Please return forms ASAP.

CAR RIDERS AND PARENT DROP OFF/PICK-UP REQUIRED TRAFFIC FLOW PROCEDURES



 NO DROP OFF/NO PARKING AREAS