

MCPS Comprehensive Safety, Security, and Well-Being Initiative: A Strategic Response to the Needs of our Students

Maryland's Largest School District

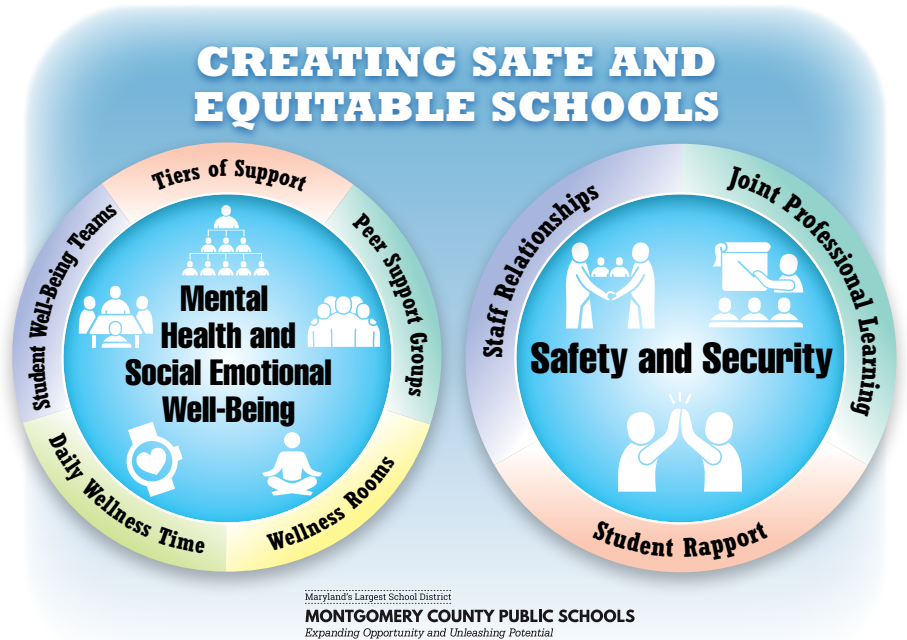
MONTGOMERY COUNTY PUBLIC SCHOOLS

Expanding Opportunity and Unleashing Potential

Creating Safe and Equitable Schools

MCPS reaffirms its commitment to ensuring that all schools are safe and equitable and that every student experiences a warm, welcoming, and tolerant learning environment in which they thrive and reach their potential. To this end, MCPS works collaboratively with our Montgomery County partners to create the relationships, understanding, and shared language needed to develop the beliefs, practices and policies that lead to safe and equitable schools through:

- » Setting the overarching vision for the work of safety, security and well-being;
- » Establishing a shared vision, with enhanced structures and processes, to build the capacity of our staff and law-enforcement partners to collaboratively support the the creation of safe and equitable schools as we respond to the needs of our students;
- » Developing proactive practices to support equitable school environments that promote social, emotional, and psychological safety.



Safety, Security, and Community Engagement Officer Program Enhancements

Given the current landscape across Montgomery County with respect to student well-being and serious incidents, MCPS is conducting an exhaustive review of its safety and security staffing guidelines, professional development, and protocols. Additionally, MCPS and Montgomery County Police commit to enhancing our:

- » Shared Learning and Shared Goals;
- » Standard Operations and Procedures;
- » Relationships and Engagement

Mental Health and Social Emotional Well-Being

Many of our students are experiencing a combined crisis of missed opportunity, mental health and social-emotional safety, and learning disruption. An expansion of current programs is necessary to meet our students' social emotional challenges. MCPS has identified five areas where additional resources would be allocated most effectively:

- » Wellness Spaces
- » Student Well-Being Teams
- » Time for Daily Social Emotional Wellness
- » Peer Support Groups
- » Tiered Continuum of Support

Joint Incident Command Framework

To ensure coordinated emergency preparedness and response between school-based administration and the Central Services Incident Command Structure (ICS), Chain of Command Teams (CCT) will be established. CCT members will work consistently in assigned clusters and in defined command team roles. Through shared professional learning and collaboration with the school based command teams during scenario based drills, members of the Central Services Command Team will establish relationships with school based members in similar roles, become familiar with building layouts, and will be well-versed in the implementation of emergency responses (lockdown, shelter, evacuation).