



Charles W. Woodward High School

January 21, 2020



# Where we are:

SCHOOL	SCHOOL YEAR							
	2018-2019	2019-2020	2020-2021	2021-2022	2022-2023	2023-2024	2024-2025	2025-2026
<b>TILDEN MS</b>	Existing Tilden/ Woodward	Existing Tilden/ Woodward	New Tilden MS	New Tilden MS	New Tilden MS	New Tilden MS	New Tilden MS	New Tilden MS
<b>NORTHWOOD HS</b>	Existing Northwood HS	Existing Northwood HS	Existing Northwood HS	Existing Northwood HS	Existing Northwood HS	Swing Space: Woodward Phase 1	Swing Space: Woodward Phase 1	New Northwood HS
<b>WOODWARD HS</b>	WOODWARD PHASE I DESIGN		WOODWARD PHASE I CONSTRUCTION			WOODWARD PHASE II CONSTRUCTION		New Woodward HS



# Schedule



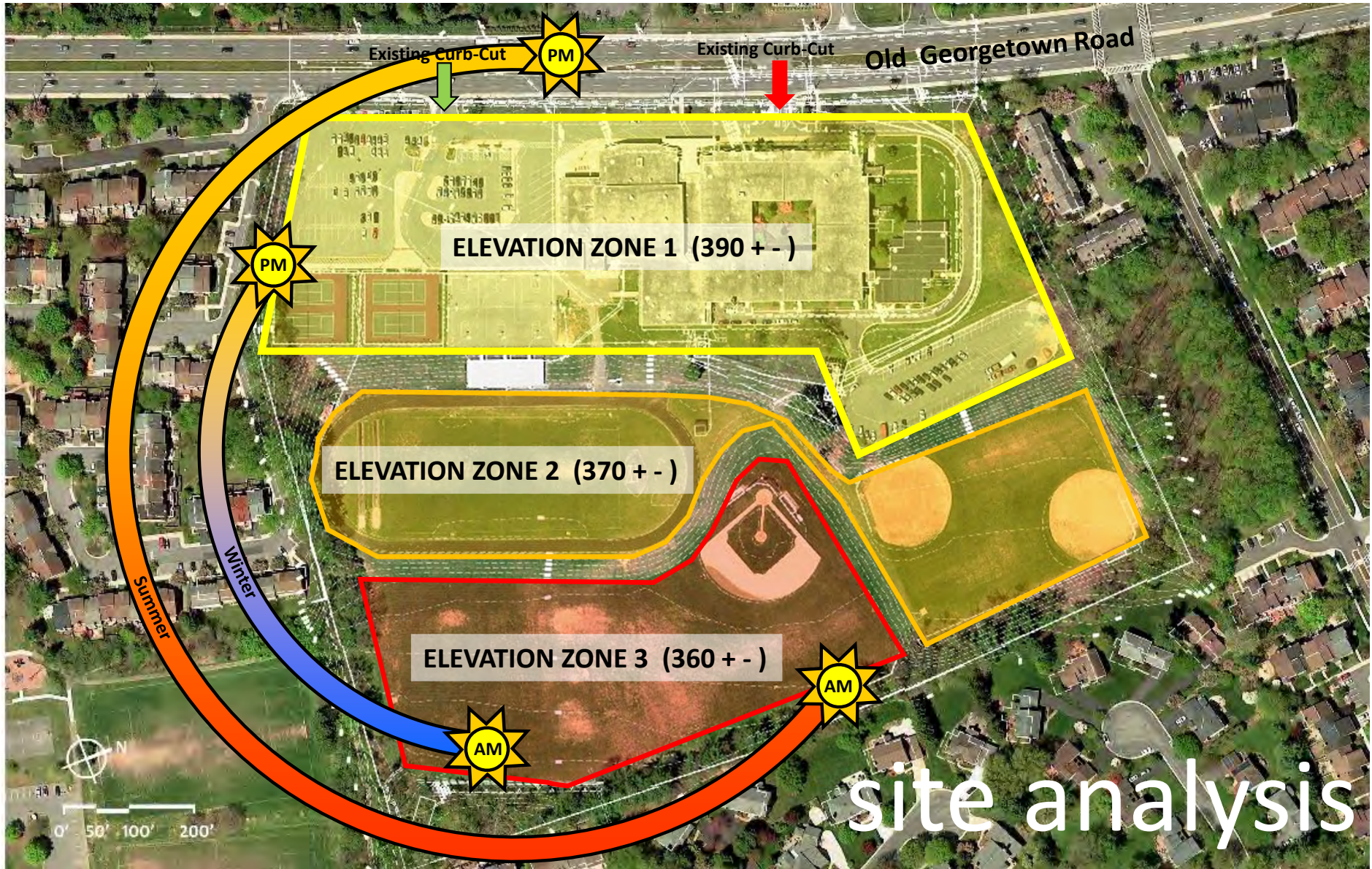


EXISTING TILDEN  
MIDDLE SCHOOL  
27.3 ACRES

TIMBERLAWN  
PARK

site context







Untitled Map  
© 2019 Google



Old Georgetown Road

Presence on Old Georgetown

Engage the Grades

Optimize Solar Orientation

Maximize Views to Landscape

Utilize Site Entrances

site goals

Google Earth



## Elevation: Courtyard



# Building Elevations





# Building Elevations





# Building Elevations



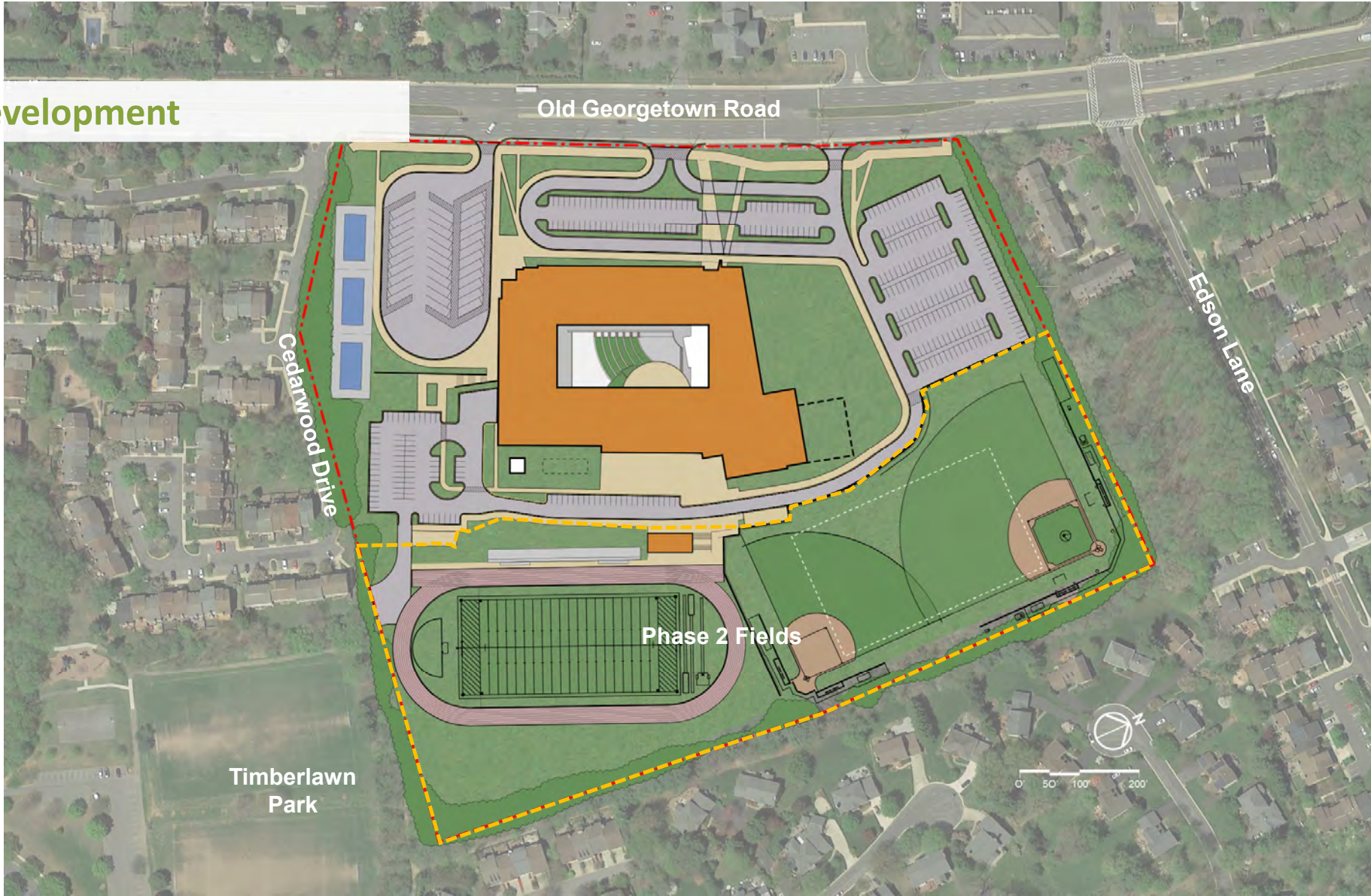


Site Plan: History





# Site Plan Development





## Site Plan Development: Green Corridors



## Pedestrian/Bike Path/Urban Park

- North Bethesda Garrett Park Master Plan
- Connection to future separate bike lanes on Edson Lane



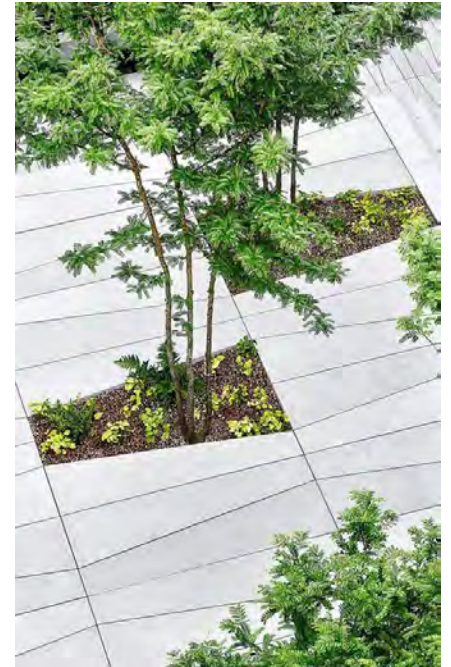


## Site Plan Development: Green Corridors



### Pedestrian/Bike Path/Urban Park

- Site Lighting
- Planting
- Future connection to bike paths





## Site Plan Development: Entry Plaza

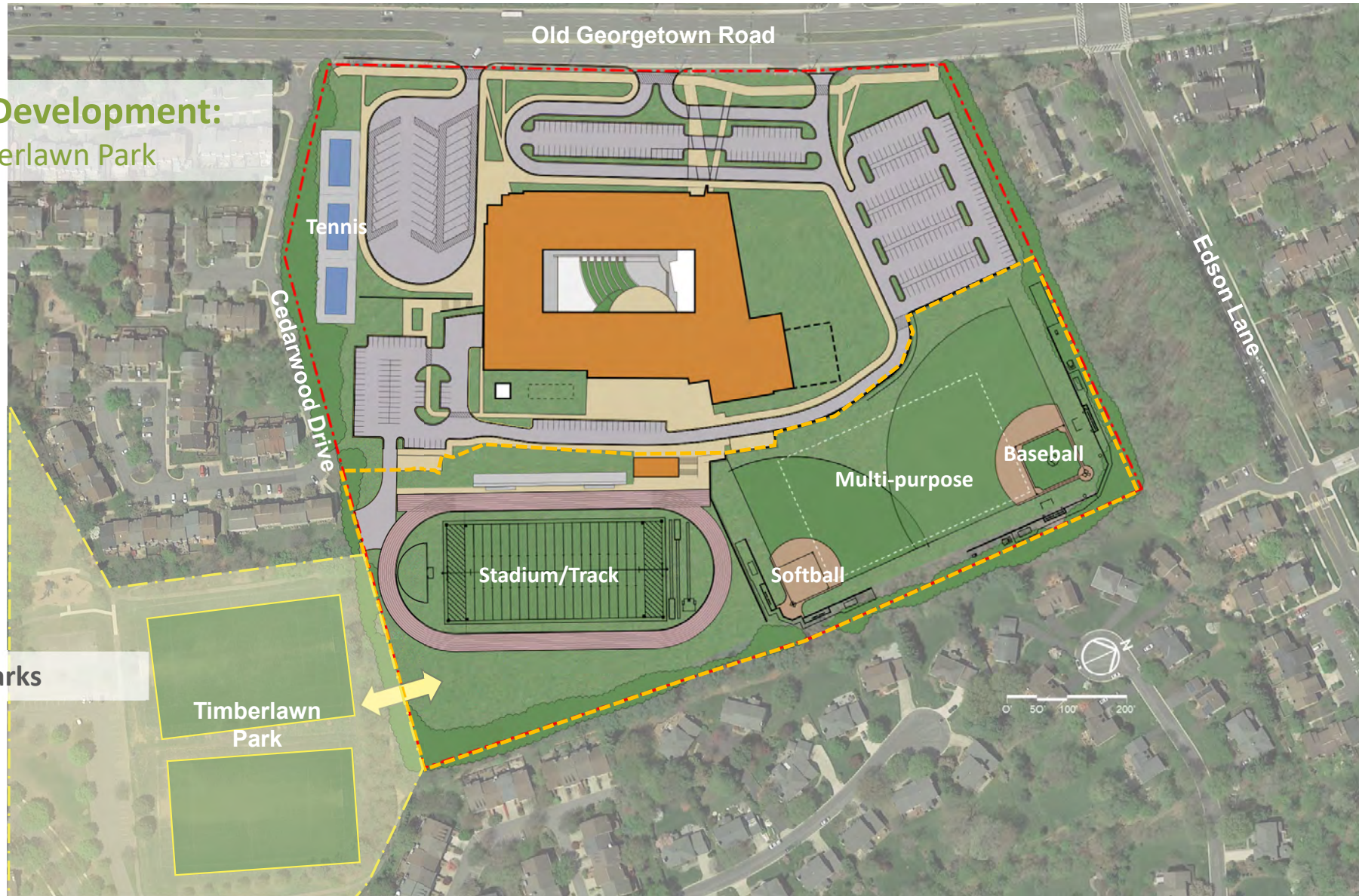


### Entry Plaza

- Pedestrian entrance to site
- Connection to path/urban park
- Public space for community use



**Site Plan Development:**  
Use of Timberlawn Park

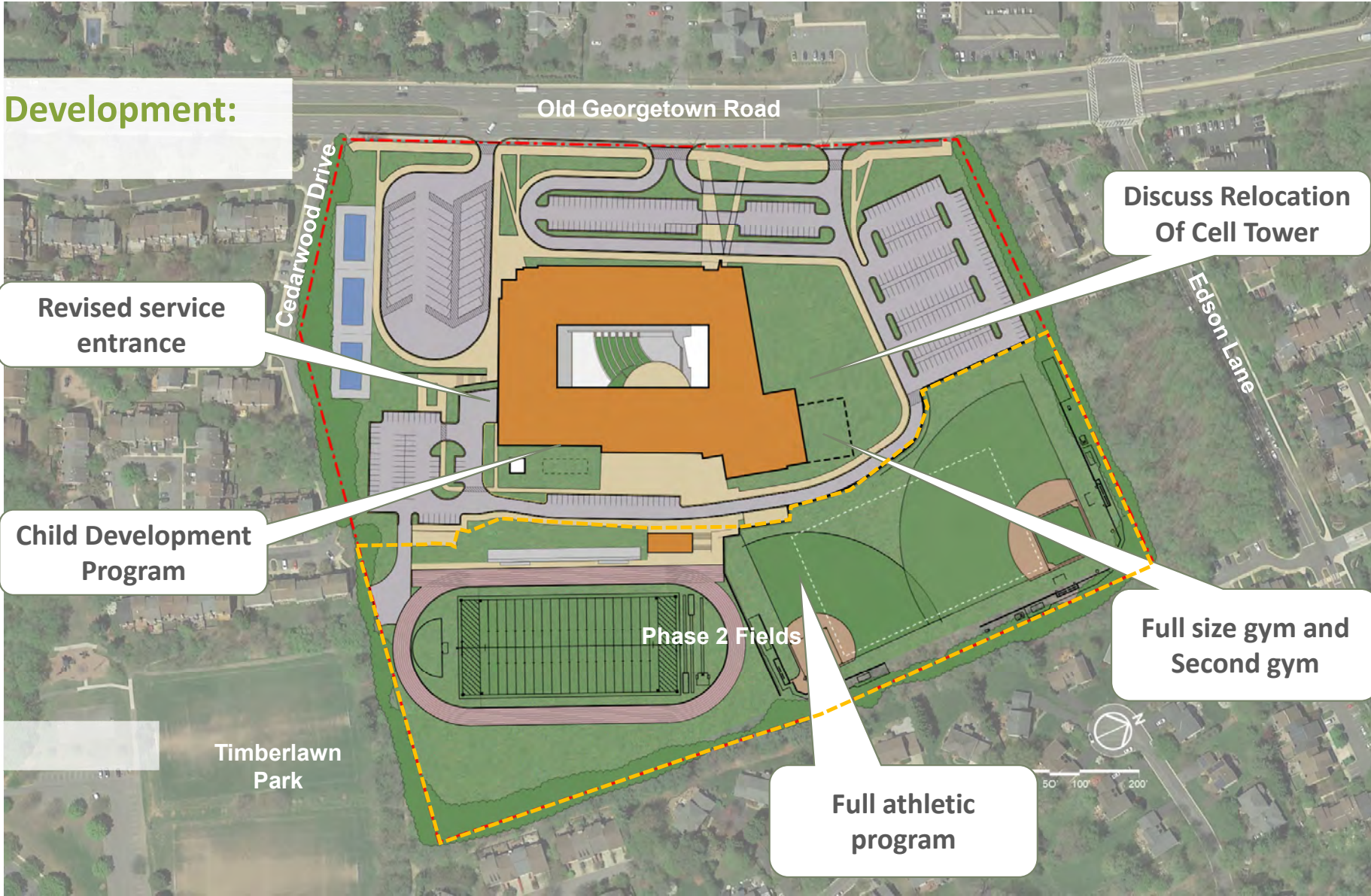


**MCPS/Dept Parks**

Timberlawn  
Park



**Site Plan Development:**  
MCPS



Revised service entrance

Child Development Program

Phase 2 Fields

Full athletic program

Discuss Relocation Of Cell Tower

Full size gym and Second gym

MCPS Review

Timberlawn Park

Old Georgetown Road

Cedarwood Drive

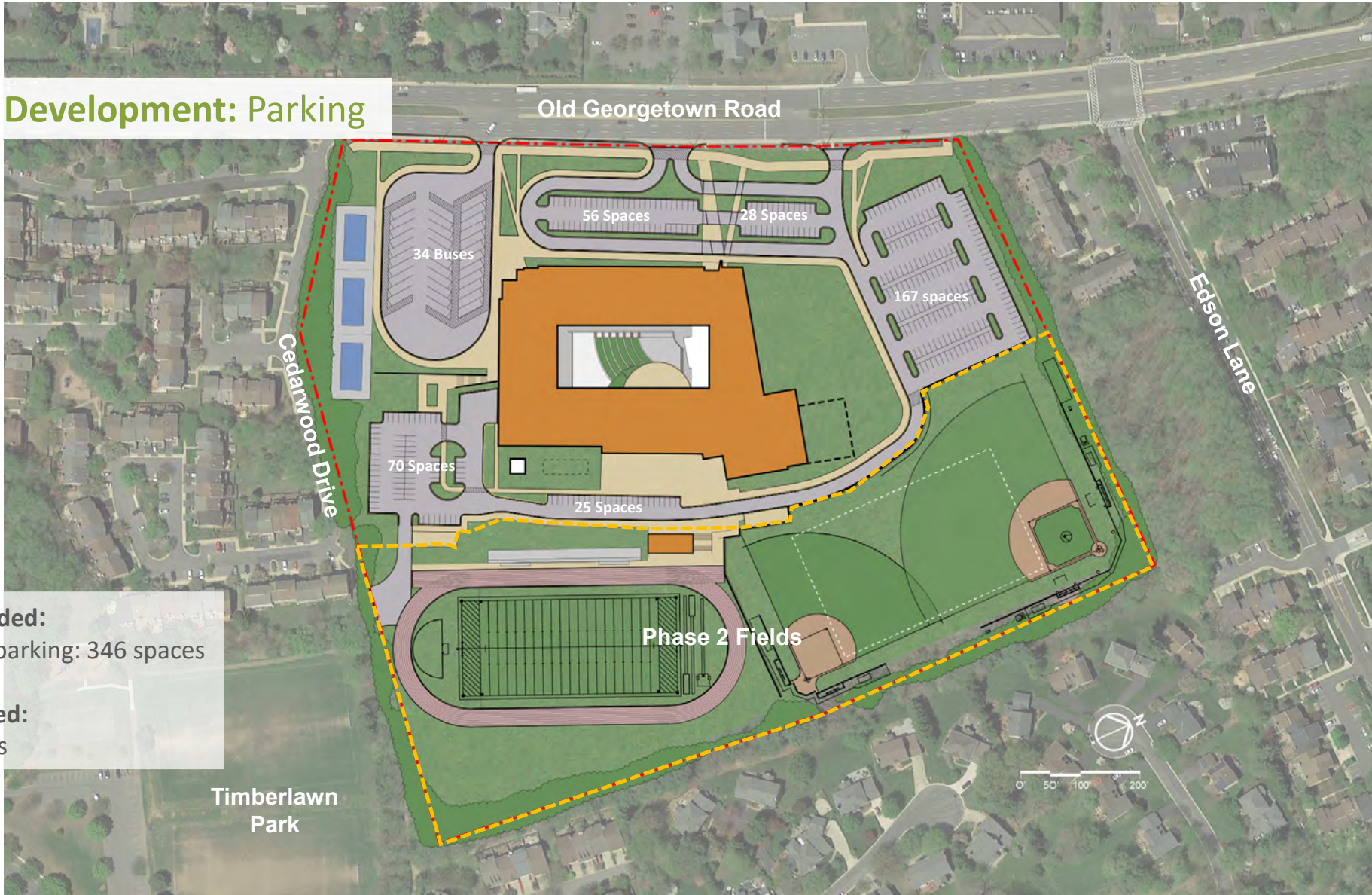
Edson Lane



50' 100' 200'



## Site Plan Development: Parking



### Parking Provided:

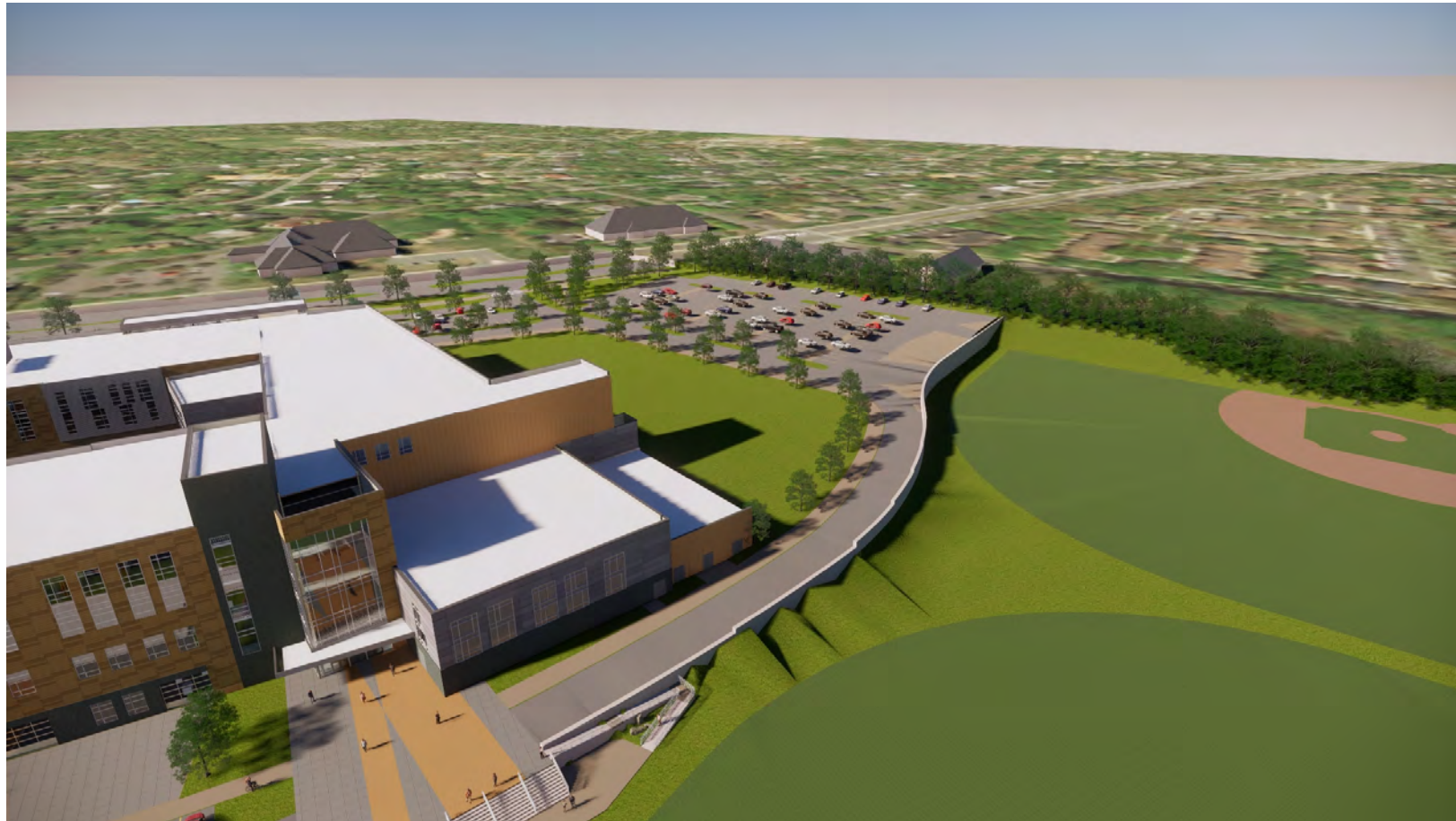
- On grade parking: 346 spaces

### MCPS Required:

- 450 spaces



## Site Plan Development: On-grade Parking



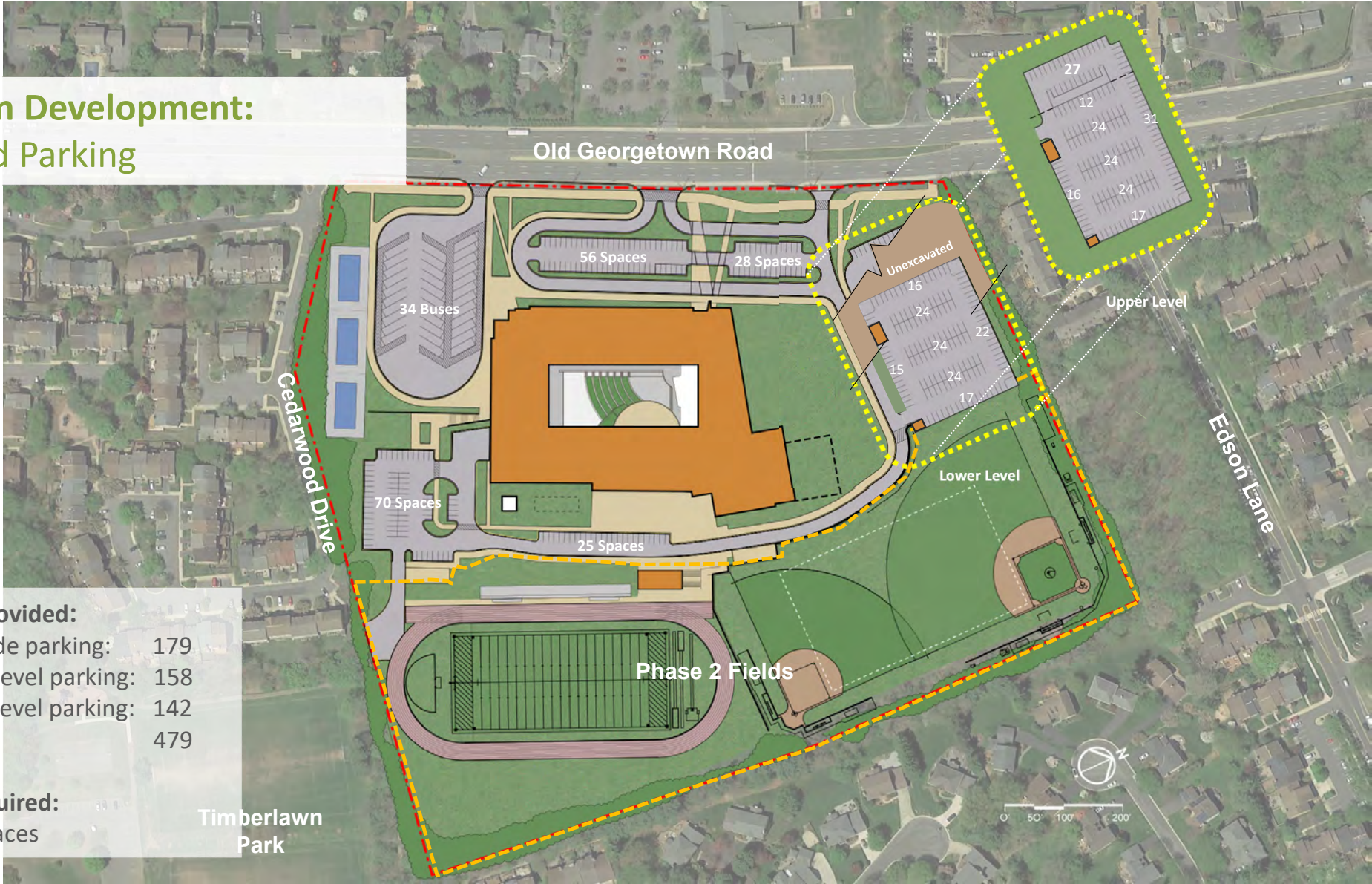


## Site Plan Development: On-grade Parking





# Site Plan Development: Elevated Parking



### Parking Provided:

- On grade parking: 179
- Upper level parking: 158
- Lower level parking: 142
- TOTAL 479

### MCPS Required:

- 450 spaces

Timberlawn  
Park



## Site Plan Development: Elevated Parking



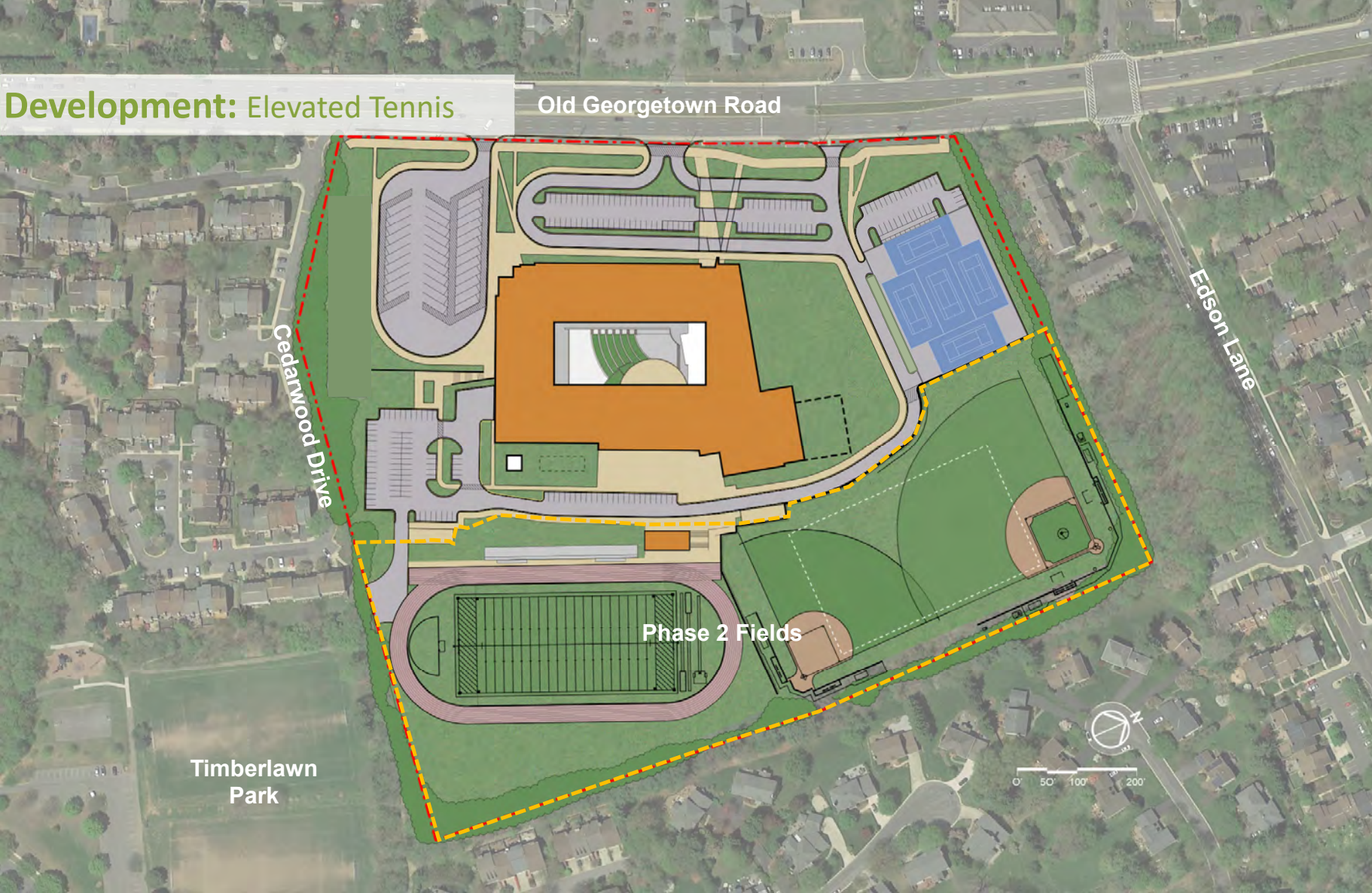


## Site Plan Development: Elevated Parking



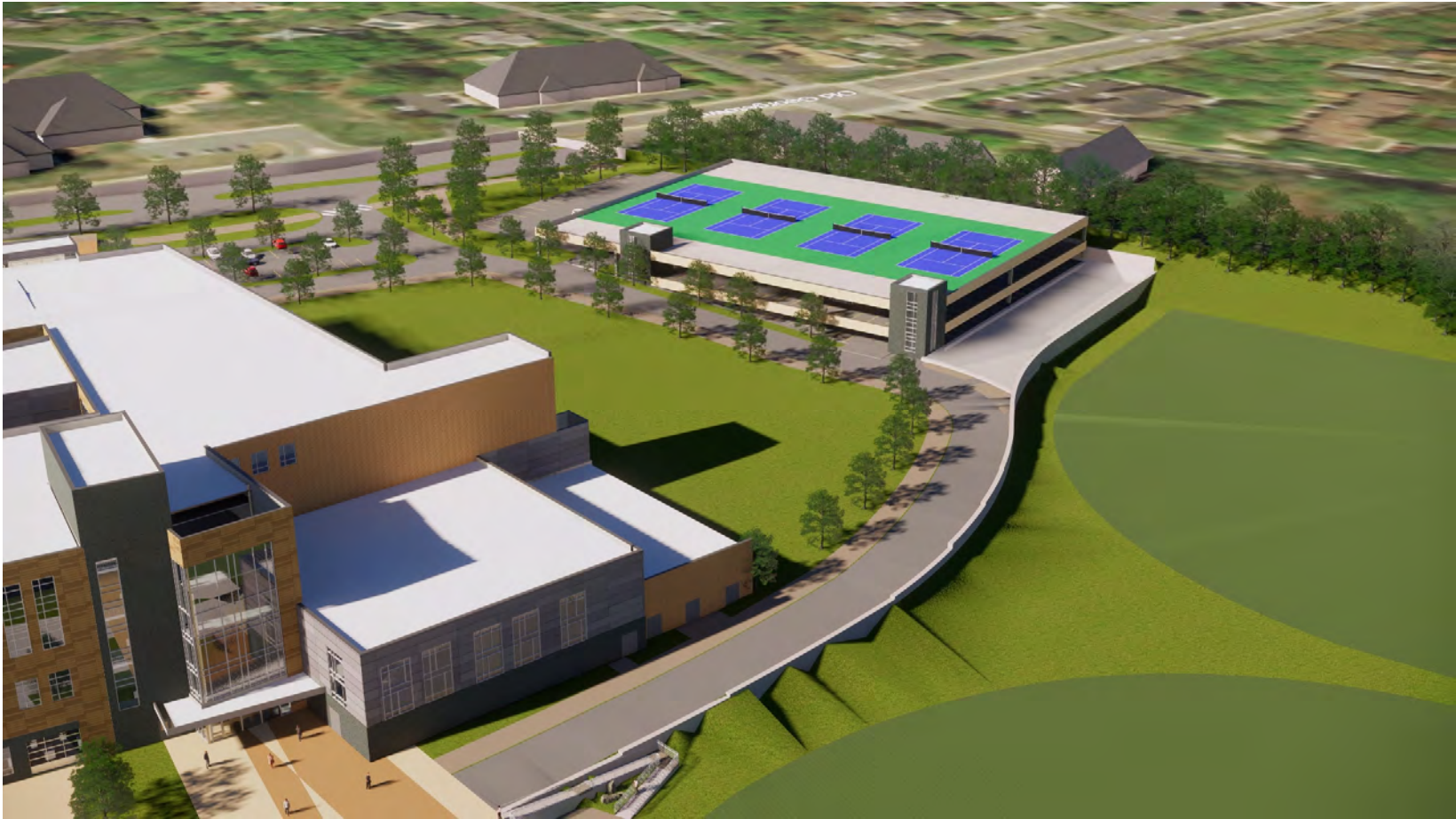


**Site Plan Development: Elevated Tennis**





Site Plan Development: Elevated Tennis



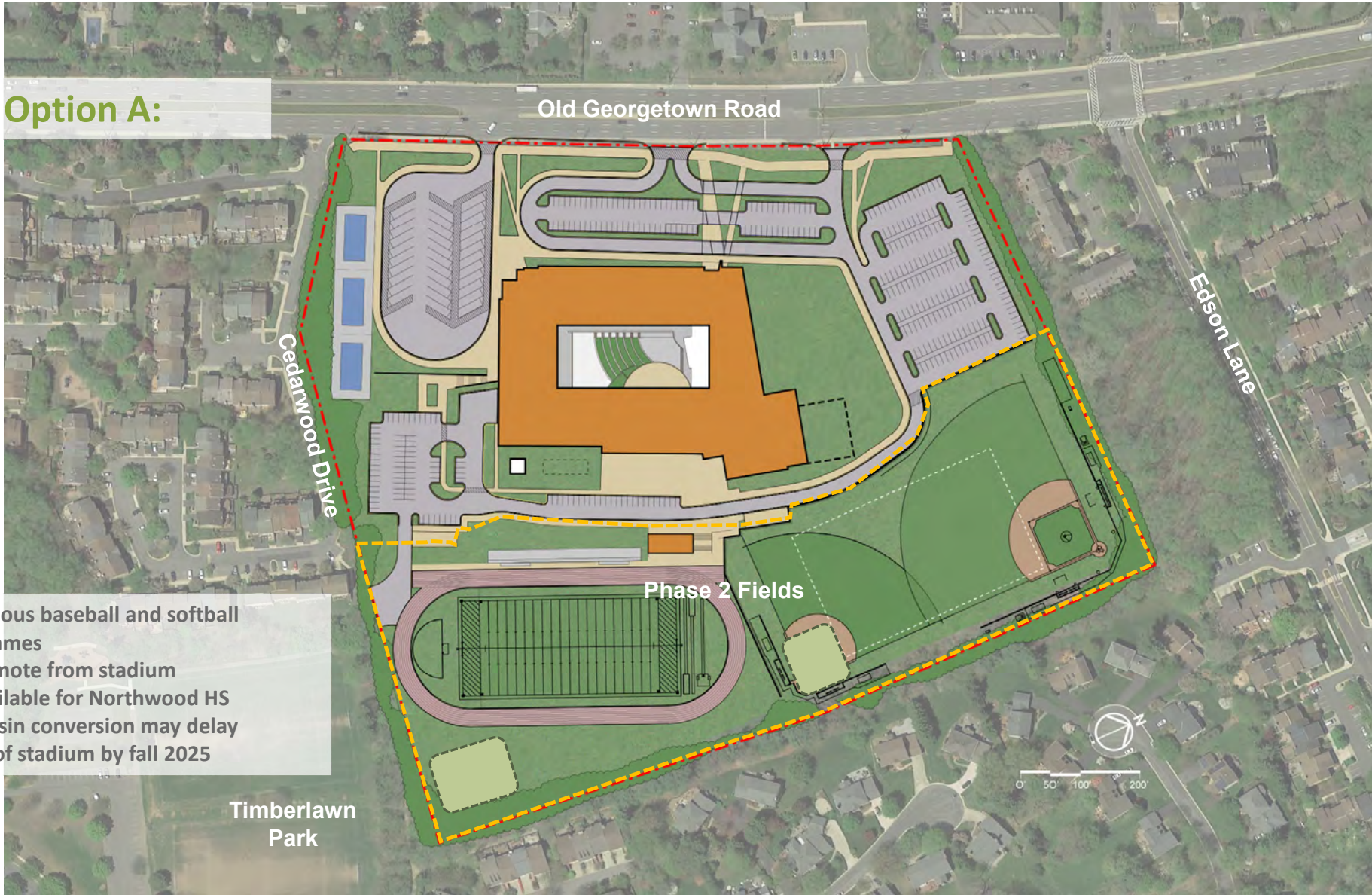


## Site Plan Development: Elevated Tennis





## Site Plan Option A:



- No simultaneous baseball and softball practice or games
- Parking is remote from stadium
- No fields available for Northwood HS
- Sediment basin conversion may delay completion of stadium by fall 2025



## Site Plan Option B:

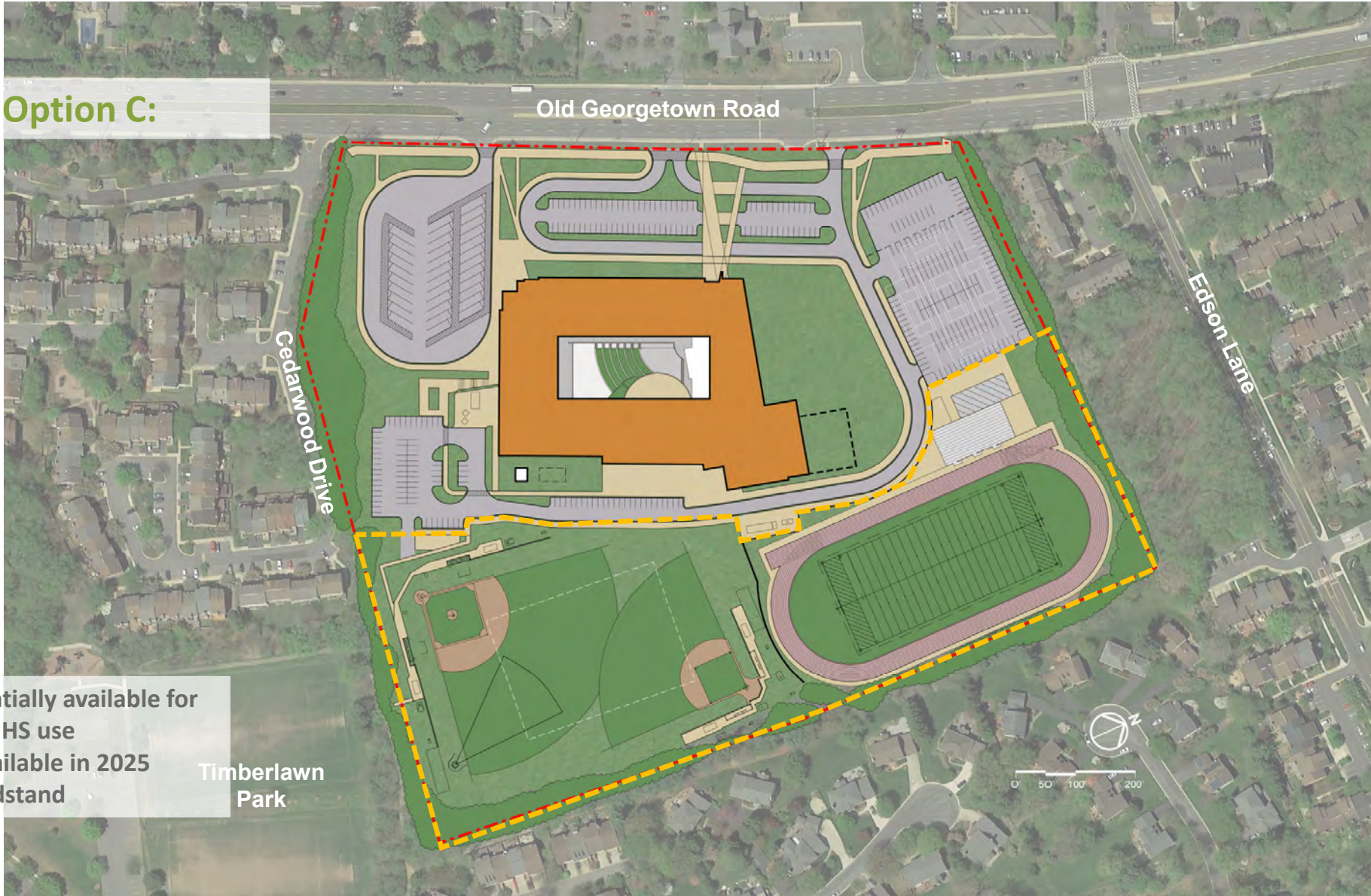


- No Multi-purpose field
- Baseball and Softball Fields do not fit

Timberlawn  
Park



## Site Plan Option C:



- Fields potentially available for Northwood HS use
- Stadium available in 2025
- Offset grandstand

Timberlawn  
Park



**QUESTIONS?**  
**THANK YOU!**