

September 6, 2013

John Poole's **BACK POCKET**

A Thought for Today:

No one can whistle a symphony. It takes a whole orchestra to play it.

– H. E. Luccock

Let's Have a Data Chat

The first two weeks of school have been beautiful at JPMS – inside the classrooms and outside in the gorgeous September weather. Thanks again for sending us such delightful kids to work with! Now - when we're feeling pretty settled but the pace hasn't quite yet built up to full speed - is a perfect moment to take a look at how our assessment data stacks up.

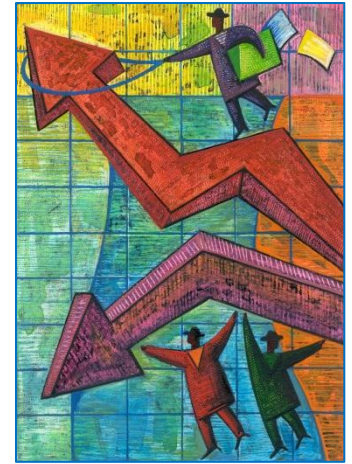
You may already be familiar with the coming changes in Maryland's accountability program, but if terms like *Common Core* and *School Progress Index* aren't yet in your working vocabulary, it's time to learn more. With MCPS' [Curriculum 2.0](#) working its way up through the lower grades, the implications for middle schools may have seemed pretty far off until this year, but now the national and local shifts in education are on our doorstep. We've worked hard at JPMS to be ready, but change is always challenging.

Maryland anticipates this school year to be the last one in which the Maryland School Assessments (MSAs) are the primary measures of student and school progress. If all goes as planned, in the 2014 – 15 school year, students will take the tests developed by the [Partnership for Assessment of Readiness for College and Careers](#) (PARCC) instead. These assessments are linked tightly to the [Common Core State Standards](#)

– a framework of rigorous expectations for students at all grade levels that has been adopted by 45 states, the District of Columbia, four territories, and the Department of Defense school system as the future of American education. Transitioning to these new standards will be tough, which is why MCPS began the [Curriculum 2.0](#) initiative several years ago, and why JPMS has been working to focus our instruction on goals that reach beyond success on the MSAs. Which is not to say we aren't concerned about doing well on the MSAs while they are still our official tests!

If you made it to Back to School Night, you saw bar graphs indicating John Poole had another strong year on the 2013 MSAs. We have a lot to be proud of!

In 2012, the [Maryland State Department of Education](#) (MSDE) created a complicated mathematical formula to identify targets for individual schools in three areas: Achievement, Student Growth, and Gap Reduction. After the test scores are crunched, each school would then be assigned a strand from 1 to 5, with 1 being right on or above target in all three areas,



and 5 being below target across the board. This is the [School Progress Index](#) (SPI).

Although I understand the desire to support high achievement, continuous improvement and elimination of the gaps among student groups, I am not a fan of the SPI. The formula is too complicated to help schools decipher what they need to do to raise their scores, and it doesn't take into account the statistical implications for small schools like JPMS.

Here's an example: last year, we had only 22 students in the Black or African American student group. That means each individual student accounted for 4.5% of our group data. Having 3 struggling students in this group move on to the high school in the same year that 3 strong students moved up from the elementary schools could make our scores improve by a whopping 13.5% - with only maintenance of performance and no real

improvement in achievement. Of course, the scores would plummet by the same 13.5% if three strong students went on to ninth grade while 3 weaker students enrolled in sixth grade. I don't think that sort of accounting gives a realistic impression of what's really happening in our school.

So now I am pleased to report that JPMS' SPI for 2013 is right up at the top of MCPS. We earned an SPI of 2, and there were no schools in the county that earned 1s. It's nice data, but take it with a grain of salt!

The numbers I respect are the ones I showed at Back to School Night. They indicate strong MSA scores for our students in the context of MCPS and the state of Maryland. Here are charts drawn from the official MSDE website: mdreportcard.org. (You can see the data in other formats at another MSDE site: mdk12.org.)

2013 MSA Reading - All Grades

► John H. Poole Middle All Students



► Montgomery County All Students



► Maryland State All Students



KEY

Proficiency Levels:

Basic Proficient Advanced

Special Indicators:

'*' indicates no students or fewer than 10 students in category, or '**' indicates the percentage for the category is either ≤ 5 or ≥ 95 and the corresponding counts have been suppressed.

2013 MSA Mathematics - All Grades

► John H. Poole Middle All Students



► Montgomery County All Students



► Maryland State All Students



Our school has a lower percentage of basic students and a higher percentage of advanced students than both MCPS and the state in both reading and math. (Science scores for 2013 have not been published yet.) That is what we are striving for: being the best environment for every student to be able to reach academic success.

Of course, there is a lot more to the story. Looking deeper, we see that some of our student groups are significantly higher-performing than others. Again, reading and

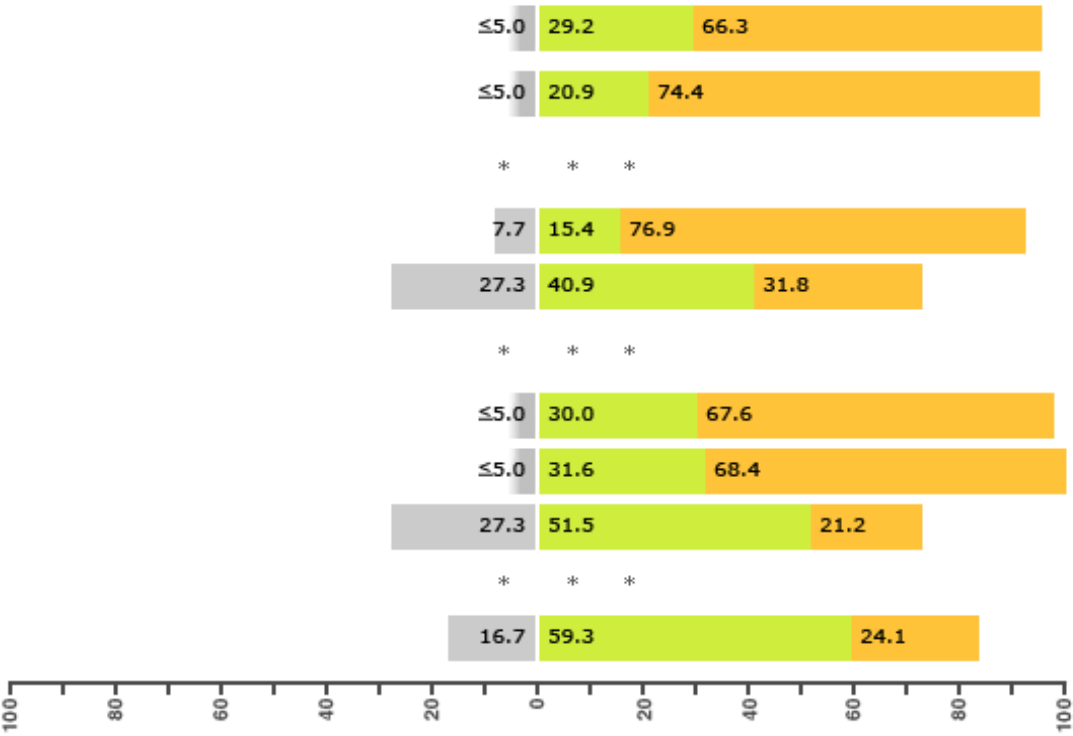
math show similar trends. In both areas, Black or African American students, special education students and students receiving free and/or reduced-price meals (FARMs) are not scoring as high as their friends in other student groups. These groups are relatively small, but that doesn't diminish the commitment we feel to every kid in every student group.

The math chart is on the next page – both don't fit on the same page!

2013 MSA Reading

All Students

- Hispanic/Latino of any race
- American Indian or Alaska Native
- Asian
- Black or African American
- Native Hawaiian or Other Pacific Islander
- White
- Two or more races
- Special Education
- Limited English Proficient
- Free/Reduced Meals



KEY

Proficiency Levels:
Basic Proficient Advanced

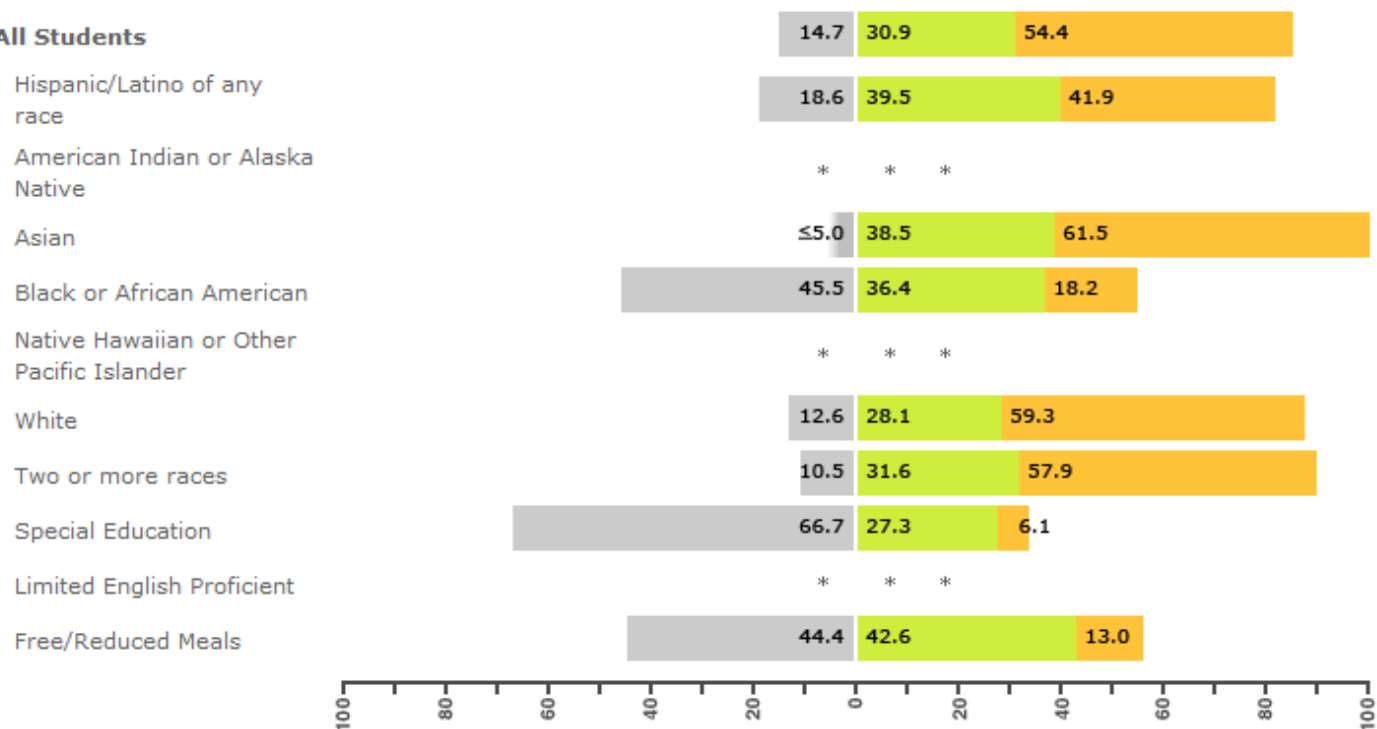
Special Indicators:
'*' indicates no students or fewer than 10 students in category, or '*' indicates the percentage for the category is either ≤5 or ≥95 and the corresponding counts have been suppressed.

Because we are accustomed to ranking among the most successful middle schools in our district and our state, this year will be an especially busy one at John Poole. We plan to maintain our record of excellence on the MSAs, support improved performance among our student groups that need to catch up, and move closer to the instructional

models that will keep us at the top once the MSAs are gone and the PARCC assessments have taken their place. Students who have benefitted from Curriculum 2.0 are on our doorstep; the Algebra 1 curriculum has been upgraded to the new standards; and in every classroom we are helping students think, speak and write to even higher standards.

2013 MSA Mathematics

All Students



You will be able to see and hear what's new. Listen for your child to talk about *collaboration on problem solving*, engaging in *academic discourse*, developing a strong *argument*, *modeling*, and other learning processes that may be a bit unfamiliar.

Of course, there are things you can do at home to support the new educational practices. Encourage your child to read and

write as much as possible: keep a journal, write letters, write directions for a pet sitter; read the directions for anything new in your home – all these practical activities are great practice. And please keep following the information shared in the *Back Pocket*, at PTSA meetings and online as we take our students into the Common Core era. Thanks!

- Charlotte Boucher

Questions About Edline?

Edline is a great way to keep on top of your child's academic progress.

We make sure our students know how to log into their accounts, and we hope every parent will become an active user of the system as well.

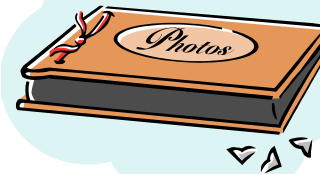
For assistance please email Joy McIntyre at Joy_A_McIntyre@mcpsmd.org. She can answer questions and troubleshoot problems with logins, passwords, combining accounts for more than one child, and other Edline features.

Don't wait – help is just an email away!

Glimpses of the New Year Settling In...



School Picture Day is September 18!



SCHOOL: JOHN POOLE MIDDLE SCHOOL

DATE: WEDNESDAY, SEPT. 18, 2013

PICTURE DAY ID: MJ813804Q0

A12 \$66.00 with Custom Background 1 - 8x10 4 - 5x7s 4 - 3x5s 16 - 2x3s 8 - 1½x2½s 1 - Portrait CD 1 - Collage \$61.00 w/o Custom Background	B12 \$72.00 with Custom Background 2 - 8x10s 4 - 5x7s 4 - 3x5s 20 - 2x3s 16 - 1½x2½s 1 - Portrait CD 1 - Collage \$67.00 w/o Custom Background	C12 \$55.00 with Custom Background 4 - 5x7s 4 - 3x5s 16 - 2x3s 8 - 1½x2½s \$50.00 w/o Custom Background	D12 \$44.00 with Custom Background 1 - 8x10 2 - 5x7s 8 - 2x3s \$39.00 w/o Custom Background	E12 \$41.00 with Custom Background 2 - 5x7s 1 - 3x5 10 - 2x3s 4 - 1½x2½s \$36.00 w/o Custom Background	F12 \$53.00 with Custom Background 3 - 5x7s 2 - 3x5s 16 - 2x3s 9 - 1½x2½s \$48.00 w/o Custom Background
A1 \$55.00 with Custom Background 1 - 8x10 2 - 5x7s 4 - 3x5s 16 - 2x3s 8 - 1½x2½s 1 - Portrait CD 1 - Collage \$50.00 w/o Custom Background	B1 \$61.00 with Custom Background 2 - 8x10s 2 - 5x7s 4 - 3x5s 20 - 2x3s 16 - 1½x2½s 1 - Portrait CD 1 - Collage \$56.00 w/o Custom Background	C1 \$44.00 with Custom Background 2 - 5x7s 4 - 3x5s 16 - 2x3s 8 - 1½x2½s \$39.00 w/o Custom Background	D1 \$33.00 with Custom Background 1 - 8x10 8 - 2x3s \$28.00 w/o Custom Background	E1 \$30.00 with Custom Background 1 - 3x5 10 - 2x3s 4 - 1½x2½s \$25.00 w/o Custom Background	F1 \$42.00 with Custom Background 1 - 5x7 2 - 3x5s 16 - 2x3s 9 - 1½x2½s \$37.00 w/o Custom Background
A \$44.00 with Custom Background 1 - 8x10 2 - 5x7s 4 - 3x5s 8 - 2x3s 8 - 1½x2½s 1 - Portrait CD 1 - Collage \$39.00 w/o Custom Background	B \$50.00 with Custom Background 2 - 8x10s 2 - 5x7s 4 - 3x5s 12 - 2x3s 9 - 1½x2½s 1 - Portrait CD 1 - Collage \$45.00 w/o Custom Background	C \$33.00 with Custom Background 2 - 5x7s 4 - 3x5s 8 - 2x3s 8 - 1½x2½s \$28.00 w/o Custom Background	D \$22.00 with Custom Background 1 - 8x10 \$17.00 w/o Custom Background	E \$19.00 with Custom Background 1 - 3x5 2 - 2x3s 4 - 1½x2½s \$14.00 w/o Custom Background	F \$31.00 with Custom Background 1 - 5x7 2 - 3x5s 8 - 2x3s 9 - 1½x2½s \$26.00 w/o Custom Background

Extras

Available only with a package purchase

#1 8 - 2x3s.....	\$11.00
#2 2 - 5x7s.....	\$11.00
#3 1 - Portrait CD.....	\$15.00
#4 1 - Collage.....	\$20.00

Add-On's

Name on Wallets.....	\$6.00
Name on All Portraits.....	\$8.00
Basic Retouching.....	\$9.00
Premium Retouching.....	\$15.00

ONLINE PREORDER INSTRUCTIONS:

Prepaying online is simple and easy...

Step 1: Log onto my.lifetouch.com,

Step 2: Enter your school's Picture Day ID # and your student's first name,

Step 3: Simply follow the easy online instructions to prepaying online!

Step 4: Once you have finished ordering online, fill out your prepay portrait order envelope as normal including your online payment code at the bottom of the order envelope.

Pre-order your portrait package for the best value!

All students will be photographed and have the opportunity to purchase portraits. Portraits can be purchased by prepaying online, with a prepay portrait order envelope or later by proof. Portrait order envelopes are available at your school.



Watch for the payment envelopes and brochures to come home on Monday, September 9.

Go to my.lifetouch.com if you prefer to pre-pay online.
Check out the many ideas for gifts and keepsakes with this year's school picture imprinted!

Safety First!

Back to school means those relaxed traffic patterns we got used to over the summer are gone until next year. Student safety is, of course, our primary concern. There are beautiful new sidewalks on Tom Fox to help students stay out of the road, and those of us behind the wheel need to do our part, too.

Here are four simple habits that will help ensure everyone can come and go safely, even in heavy traffic:

- When you arrive at school, please pull all the way forward to the Student Drop Off sign painted on the parking lot through-lane. That leaves the maximum space for cars to come in behind you, and fewer cars will spill out onto Tom Fox.
- Please observe the No Left Turn sign when you leave the JPMS parking lot. Take a little more time to exit turning right and wait until you reach Hughes Road to make your left hand turn. It's *always* what drivers are supposed to do, but at arrival and dismissal times, you'll be traveling away from the school traffic instead of back into it, and that will really help.
- Remember that Tom Fox is a two-way street. Cars approaching from the direction of Halmos Road need to stay in the right hand lane, even if that means waiting in a line of cars. Waiting on the opposite side of Tom Fox blocks traffic and requires students to cross in front of moving vehicles to reach their rides.
- When children are coming to school in the morning or going home in the afternoon, take special care to observe the speed limits and come to a complete stop at every stop sign in our neighborhood. Slowing down and observing the traffic laws can save lives.

Thanks for working with us to keep our kids safe!



What's Up with the Vending Machines?

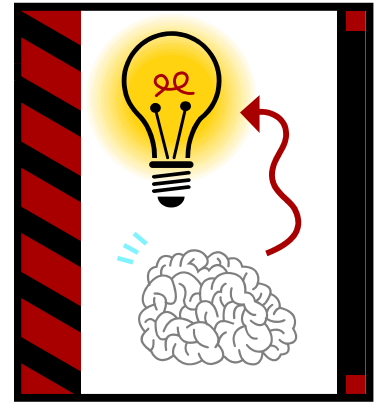
We've had some disappointed students this week attempting to purchase a soda or snack from the hallway vending machines to take on the bus home after school. Last year, the machines turned on when the student day ended at 2:20, and some students made a beeline to get a purchase made without missing the bus.

Last June, however, the United States Department of Agriculture released "*Smart Snacks in Schools*" which states that foods and beverages that do not meet nutritional standards cannot be available to students until 30 minutes after the end of the school day. Consequently, MCPS adjusted the timers on all vending machines that sell candy and sugared drinks.

The same 30-minute requirement also applies to food and beverages sold through fundraising events, so the after school bake sale is now a thing of the past.

Snack Time at JPMS

- Brain research shows that being hungry can inhibit learning.
- Hungry students have trouble concentrating on their work.
- Being hungry can lead to poor behavior.
- Students who leave home by 7:00 AM will wait at least 4 – 5 hours before they eat lunch.



Our Plan...Provide an opportunity for a light, healthy mid-morning snack



- Morning announcements will be made at the beginning of period 3 (around 9:20 each day).
- During announcements, students may eat a snack they have brought from home or purchased before school in the cafeteria.

The Rules

- Students must bring their snacks to period 3 when they arrive to class; they will not be excused to their lockers to fetch forgotten snacks.
- Snacks are for the person who brings them; they must *not* be shared or given to someone else.
- Liquids or snacks that require a utensil to eat are not permitted.
- Students must clean up after themselves; otherwise, they can lose the privilege to eat at snack time.

GOOD SNACKS

Granola Bars
Fruit
Small packs of carrots,
apple slices, etc.
Power Bars

PLEASE DON'T SEND -

- Candy or other sweets
- Juice, soda or other drinks
- Empty calories like chips
- Yogurt
- Anything that requires a spoon or fork



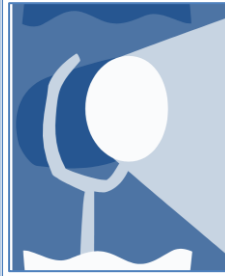
**Snack Time began
Friday, August 30.**

Thanks for helping us ensure our kids get the nutrition they need to succeed!

John Poole Middle School



- Jennifer Kasten - President
- Neile Whitney - Vice President
- Hisaho Blair - Secretary
- Michelle Hobbs – Treasurer
- Wendy Gotlewski – Membership & Volunteers



Spotlight on...

Math

Our first PTSA meeting will take place on October 8.

The subject will be the evolving MCPS Math Curriculum and how JPMS is implementing it.

Questions? Ideas? Opinions?
Getting in touch with your PTSA is as easy
as sending an email message!

JPMSPTSA@gmail.com

Membership and volunteer forms are available at the JPMS website:

<http://www.montgomeryschoolsmd.org/uploadedFiles/schools/poolems/parents/4.%20PTSA%20Membership%20Form.pdf>

Joining the PTSA is an important part of supporting our school! Send in your paper form and check, or join online through [Online School Payments](#). Adult memberships are \$10; students are \$2.

Student Service Learning (SSL) Notes



Give a Little Time...Make a Big Difference

- SSL is a graduation requirement...but it is also an opportunity! Explore careers, learn new skills, expand understanding, and strengthen character. If you can make a difference... do it!

- Learn about the SSL graduation requirement and how to meet it in MCPS by referring to the website www.mcpsssl.org.

- All SSL must be documented on MCPS Form 560-51, *Student Service Learning Activity Verification* and turned in the school-based SSL coordinator according to timelines. Mrs. Arnold is our SSL Coordinator.
- All summer SSL documentation is due to the school-based SSL coordinator no later than the last Friday in September (September 27, 2013).
- The MCPS SSL plan allows students to earn SSL hours in specific middle and high school courses, in school-sponsored clubs and organizations that have a service focus, and with approved, official nonprofit, tax exempt organizations in the community. Know the SSL guidelines and follow them!

Did you earn SSL hours this summer?

Don't let your summer hours get forgotten in a drawer or closet somewhere. Get your SSL sheets completed with

- sponsor signature
- description of activity
- personal reflection answering all questions in full sentences
- Completed personal information including
 - ✓ first period teacher
 - ✓ student number



All hours are due on September 27, 2013. This is a county deadline! SSL sheets may be handed into the main office, counseling office or directly to Mrs. Arnold.



After School Activities

RecXtra is returning to John Poole this year with a full schedule of after school activities. Listen to the morning announcements or follow them [online](#) at our website so you will be ready to participate in the programs that interest you.



If you have any suggestions for programs you would like to lead or to see offered at JPMS, please contact Mrs. Crutchfield at Winessa_R_Crutchfield@mcpsmd.org.

Activity Buses

After school activity buses begin on Tuesday, September 10 and run each week on Tuesdays, Wednesdays and Thursdays. There is no activity bus service on Mondays, Fridays, or days before a half-day or holiday. The buses leave JPMS at 4:00 PM. There is no charge for activity buses, but students must have been participating in a school-sponsored activity be to able to ride.

Softball

JPMS Softball tryouts start on Tuesday, September 10. They will be held Tuesday, Wednesday and Thursday after school, for any 7th and 8th grader. Paperwork must be completed and turned in before you can try out. Paperwork can be picked up in the PE office.

Coed Cross Country

JPMS Co-ed Cross Country practice will be held on Tuesday, September 10. All paperwork must be turned in before practice. Paperwork can be picked up in the PE office.

School Store Grand Opening

The School Store will be open on Tuesday, Wednesday, and Thursday from 7:25-7:30. We have lots of cool and inexpensive school supplies. Drop by and see what's in stock!

Strategic Planning Framework

The Montgomery County Board of Education has adopted a new Strategic Planning Framework that will guide the work of MCPS schools and offices in the years to come. The Framework, *Building Our Future Together: Students, Staff and Community*, incorporates the three competencies that students need for success in the 21st century—academic excellence, creative problem solving, and social emotional learning—as well as a continued commitment to operational excellence. The Framework describes what students should know and be able to do in the three competency areas, as well as specific actions staff, parents, and community members should take to support students. Brochures were distributed at Back to School Night and are still available through the main office at JPMS. Learn more by visiting the MCPS website at www.montgomeryschoolsmd.org/framework or search Strategic Planning Framework.



Estructura de Planificación Estratégica

El Consejo de Educación (Board of Education) de Montgomery County ha adoptado una nueva Estructura de Planificación Estratégica que guiará el trabajo de las escuelas y las oficinas de MCPS en los próximos años. La Estructura, Construyendo Nuestro Futuro Juntos: Estudiantes, Empleados, y Comunidad, incorpora las tres áreas de competencia que los estudiantes necesitan para ser exitosos en el Siglo XXI—excelencia académica, resolución creativa de problemas, y aprendizaje social y emocional—como así un compromiso continuo hacia la excelencia operativa. La Estructura describe lo que los estudiantes deberían saber y ser capaces de hacer en las tres áreas de competencia, así como también acciones específicas que el personal, los padres y los miembros de la comunidad deben tomar para apoyar a los estudiantes. Los padres y el personal recibirán información sobre la Estructura de Planificación Estratégica al comienzo del ciclo escolar, pero ya pueden aprender más visitando la página de Internet de la Estructura de MCPS en www.montgomeryschoolsmd.org/framework/es o busque Strategic Planning Framework.

Extracurricular Activity (ECA) Fee Remittance Form

The Montgomery County Board of Education requires payment of an extracurricular activity (ECA) fee for middle or high school students who want to participate in extracurricular activities for the 2013–2014 school year. The ECA fee remittance forms are now available on the MCPS website in eight languages at www.montgomeryschoolsmd.org/departments/forms/280-37.shtm.

MCPS News in 90

MCPS News in 90 and *Noticias en 90* (in Spanish) are 90-second updates on what is happening throughout the district. The shows can be viewed at the following URL:

- *News in 90*: montgomeryschoolsmd.org/news/
- *Noticias en 90*: montgomeryschoolsmd.org/es/news/

STAY CONNECTED with MCPS



VISIT www.montgomeryschoolsmd.org



CALL 301-309-MCPS (6277)



WATCH MCPS TV on Comcast 34, Verizon 36, RCN 89
and visit www.youtube.com/mcpstv



SUBSCRIBE for news and information
www.mcpsquicknotes.org



FOLLOW www.twitter.com/mcps



SIGN UP for e-mail and text alerts
www.montgomeryschoolsmd.org/alertmcps



ROCKVILLE, MARYLAND
OFFICE OF COMMUNICATIONS

- For information on government resources in Montgomery County, call 311 or visit www.montgomerycountymd.gov



Stay Connected

The new *Stay Connected* website serves as a one-stop shop for all the tools that students, staff, and parents may use to stay informed and connected with MCPS. Visit www.montgomeryschoolsmd.org/stayconnected/ for more information.

Sign-up for *MCPS QuickNotes* and *Alert MCPS*

MCPS QuickNotes is a free e-mail service that provides subscribers with important news and information about MCPS programs and activities, plus emergency information. *MCPS QuickNotes* is offered in six languages: English, Spanish, French, Korean, Chinese, and Vietnamese. Visit www.mcpsquicknotes.org to subscribe. *Alert MCPS* allows you to receive text messages or e-mail from the school system during weather-related emergencies and other major events that impact school system operations. Signing up for *Alert MCPS* is free, but please check with your wireless provider about charges associated with text messages. Sign up at <http://alert.montgomerycountymd.gov>.

Suscríbese Para Recibir *QuickNotes* y *Alerta MCPS*

MCPS QuickNotes es un servicio gratuito por correo electrónico que ofrece a los usuarios noticias e información importante acerca de los programas y actividades de MCPS, además de información de emergencia. *QuickNotes* se ofrece en seis idiomas: inglés, chino, coreano, español, francés y vietnamita. Visite www.mcpsquicknotes.org para suscribirse. *Alerta MCPS* le permite recibir mensajes del sistema escolar por texto o por correo electrónico durante emergencias relacionadas a condiciones meteorológicas y otros sucesos de importancia que afectan las operaciones del sistema escolar. Suscribirse para recibir *Alerta MCPS* es gratis, pero por favor verifique con su proveedor de servicios inalámbricos para saber si hay cargos asociados al envío de mensajes de texto. Suscríbese ingresando a <http://alert.montgomerycountymd.gov>.



IT'S NOT A JOB. IT'S A MISSION.

TEACH

A NEW FILM BY DAVIS GUGGENHEIM
HOSTED BY QUEEN LATIFAH

PREMIERES
FRI SEPT 6 • 8/7c

CBS participant MEDIA

©2013 GREAT TEACHERS PROJECT, LLC. ALL RIGHTS RESERVED.

MCPS News Update

MCPS News Update and *Noticias de MCPS* (in Spanish) are weekly, five-minute news programs that are cablecast on MCPS TV and may be viewed online.

- *News Update*: www.montgomeryschoolsmd.org/news/
- *Noticias de MCPS*: www.montgomeryschoolsmd.org/es/news/

Education Matters

On the newest episode of *Education Matters*, Board President Christopher Barclay leads a conversation about the issues students and parents face as they make the transition from elementary school to middle school and middle school to high school. Topics of discussion include class schedules, parental supports, extracurricular and elective opportunities, anxieties, as well as counseling resources. The program can be viewed on MCPS TV (Comcast Ch. 34 and Verizon Ch. 36), and online at www.montgomeryschoolsmd.org/boe/edmatters/

MCPS Moments

MCPS Moments are two-minute videos that highlight recent events, school programs, and more. The videos are featured online and on MCPS TV.

Save the Date!



Important events you won't want to miss!

September 9-10, 12	MAP-R Testing
September 10	First Activity Bus day
September 11-13	Outdoor Education at the Smith Center (Grade 6)
September 18	Yearbook Portraits during PE
September 21	Poolesville Day
September 23	Blue Ribbon Monday (Wear Blue)
September 27	Early Release Day (students dismissed at 11:50 a.m.)
September 30 - October 4	Blue Ribbon Week

Softball Schedule

Boys' Coach: Bill Cartwright

Girls' Coach: Jami Earle

September 19	Girls play King at JPMS (2:50 PM)	Boys play King away (3:15 PM)
September 25	Boys play Clemente at JPMS (2:50 PM)	Girls play Clemente away (3:15 PM)
October 2	Girls play Kingsview at JPMS (2:50 PM)	Boys play Kingsview away (3:15 PM)
October 9	Boys play Neelsville at JPMS (2:50 PM)	Girls play Neelsville away (3:15 PM)
October 15	Girls play Rocky Hill at JPMS (2:50 PM)	Boys play Rocky Hill away (3:15 PM)

Coed Cross Country Schedule

Coach: Steven Schmidt

September 19	King at JPMS (2:50 PM)
September 25	Clemente at JPMS (2:50 PM)
October 2	JPMS at Kingsview (3:15 PM)
October 15	JPMS at Rocky Hill (3:15 PM)

PHS NEWS

Go Falcons!



Portraits – September 16 & 17

Make-up Senior Pictures – September 9-12

Athletic Schedule (partial)

Boys/Girls Cross Country	9/11/2013	3:30 PM	(H)	PHS vs. Montgomery Blair
	9/17/2013	3:30 PM	(A)	PHS vs. Northwest
Boys Varsity Football:	9/6/2013	6:30 PM	(H)	PHS vs. Northwood
	9/12/2013	6:30 PM	(A)	PHS vs. Kennedy
	9/20/2013	7:00 PM	(H)	PHS vs. South Hagerstown
	9/27/2012	6:30 PM	(A)	PHS vs. Walter Johnson
Golf:	9/10/2013	3:30 PM	(A)	Coed—Multiteam Event at Blair (Worthington Manor GC)
	9/11/2013	3:00 PM	(A)	Girls—Multiteam Event at Wheaton (Laytonsville GC)
	9/16/2013	3:30 PM	(A)	Coed—Multiteam Event at Paint Branch (Northwest Park GC)
	9/18/2013	3:00 PM	(A)	Girls—Multiteam Event at Wheaton (Laytonsville GC)
	9/19/2013	3:30 PM	(A)	Coed—Multiteam Event at PHS (Hampshire Greens GC)
Girls Varsity Soccer:	9/7/2013	Time TBD	(A)	Multiteam Event at North Carroll
	9/10/2013	7:00 PM	(H)	PHS vs. Gaithersburg
	9/16/2013	7:00 PM	(A)	PHS vs. Magruder
	9/18/2013	7:00 PM	(A)	PHS vs. Northwest
Boys Varsity Soccer:	9/9/2013	7:00 PM	(A)	PHS vs. Gaithersburg
	9/16/2013	7:00 PM	(H)	PHS vs. Magruder
	9/18/2013	7:00 PM	(H)	PHS vs. Northwest
Girls Varsity Tennis:	9/6/2013	3:30 PM	(H)	PHS vs. Gaithersburg
	9/9/2013	3:30 PM	(A)	PHS vs. Watkins Mill
	9/12/2013	3:30 PM	(H)	PHS vs. Whitman
	9/17/2013	3:30 PM	(A)	PHS vs. Churchill
	9/19/2013	3:30 PM	(H)	PHS vs. B-CC
Girls Varsity Volleyball:	9/9/2013	6:30 PM	(A)	PHS vs. Quince Orchard
	9/12/2013	6:30 PM	(H)	PHS vs. Gaithersburg
	9/17/2013	6:30 PM	(A)	PHS vs. Kennedy
	9/19/2013	6:30 PM	(H)	PHS vs. Rockville
Field Hockey Varsity:	9/7/2013	Time TBD	(A)	Multiteam Event at Urbana
	9/10/2013	7:00 PM	(A)	PHS vs. Sherwood
	9/12/2013	3:00 PM	(H)	PHS vs. Whitman
	9/17/2013	3:30 PM	(A)	PHS vs. Seneca Valley
	9/19/2013	3:00 PM	(H)	PHS vs. Einstein

Call John Poole!

Main Office 301-972-7979
Counseling 301-972-7980
Cafeteria 301-407-1037
Health Room 301-407-1029



And Ask for...

Principal - Mrs. Boucher	Assistant Principal - Ms. Lemon
Technology & Arts IRT & Grade Level Coordinator	- Mr. Grotenhuis
English IRT	- Mrs. Lindsay
Social Studies IRT	- Ms. Nachlas
Math IRT	- Mr. McKay
Science IRT	- Mrs. Callaghan
Special Education IRT	- Ms. Turnbull
Counseling - (Ms. Kitts, Secretary)	Mrs. Arnold - Mrs. Eisenberg

JPMS
Timberwolves
live with
Purpose
Respect
Integrity
Dedication
Effort



Our Vision:

The Timberwolf community experiences joy in learning, celebrates excellence, and values positive relationships.

Our Mission:

At John Poole Middle School, our mission is to:

- **promote joy in learning through motivation and engagement**
- **celebrate excellence by acknowledging achievement**
- **foster a shared responsibility for academic and social success**
- **value positive relationships, thereby promoting a respectful and supportive learning environment**