



Respectful

- Respect the Voice-o-Meter level
- Respect yourself, people and property
- Follow directions the first time they are given

Classroom



Dedicated

- Be actively engaged in learning
- Set goals for yourself



Responsible



- Be prepared, on time and ready to learn
- Take ownership of your learning and behavior

Safe

- Keep your body to yourself
- Use equipment appropriately





Respectful

- Voice-o- Meter = 1 (Whisper Mister)
- Respect the privacy of others

Bathroom



Responsible



- Flush the toilet
- Wash your hands
- Keep the bathroom clean

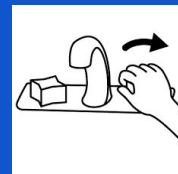
Dedicated

- Use closest student Bathroom
- Return to class quickly



Safe

- Use equipment appropriately





Respectful

- Respect the Voice-o-Meter level
- Use good manners
- Follow the directions the first time they are given

Cafeteria



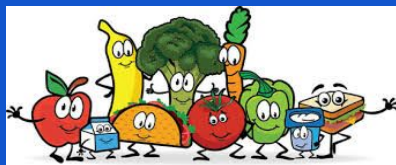
Responsible

- Clean up your own mess
- Eat only your food



Dedicated

- Fuel your body and your brain
- Help others



Safe

- Stay seated at your assigned table
- Always walk





Respectful

- Voice-o- Meter = 0 (Silence Alliance) when the whistle blows
- Follow directions the first time they are given

Playground



Responsible



- Clean up and return all equipment
- Bring in what you bring out

Dedicated

- Play fairly
- Be kind
- Include others



Safe

- Use equipment appropriately
- Keep your body to yourself



Respectful

- Follow the Technology Agreement



Digital Citizenship



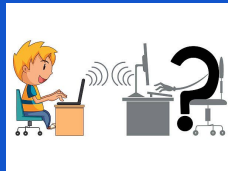
Responsible

- Use only approved sites and apps
- Mind the device
 - Charge
 - Carry carefully
 - Sign out/Shut down



Dedicated

- Complete assigned work
- Be aware of your digital footprint



Safe

- Keep usernames/passwords private
- Keep food and drink away from devices





Respectful

- Voice-o- Meter = 1 (Whisper Mister)
- Follow directions the first time they are given by driver or patrol

Responsible



- Keep food and drink in backpack
- Remember all of your belongings

School Bus



Dedicated

- Be a role model
- Go directly to your location
 - Home
 - Classroom
 - Bus



Safe

- Stay seated at all times
- Keep your body to yourself



Respectful

- Voice-o- Meter = 0
(Silence Alliance)



Hallway



Responsible

- Walk on the second tile



Dedicated

- Go directly to your location
- Be a role model



Safe

- Keep your body to yourself

