

Richard Montgomery Elementary School #5 Boundary Advisory Committee Meeting 4

April 25, 2017

www.montgomeryschoolsmd.org/departments/planning/rmes.aspx



Committee Schedule

All meetings will be held from 7:00 p.m. to 9:00 p.m. at College Gardens ES

- | | | |
|----------|--------------|--|
| | Feb 28 | First Community-wide meeting to present process and timeline |
| 1 | Mar 15 | Committee charge, overview of process, timeline, review of zones to build options, development of criteria to evaluate options |
| 2 | Mar 23 | Staff presents first set of options |
| 3 | Apr 5 | Feedback on first set of options |
| 4 | Apr 25 | If needed, staff presents a second set of options. |
| 5 | May 3 | Feedback on second set of options and draft committee report. |
| | May 9 | Second Community-wide meeting to present options and get feedback. |
| 6 | May 17 | Committee members submit option evaluations and schools submit position papers (If needed) |

www.montgomeryschoolsmd.org/departments/planning/rmes.aspx

Agenda

- Review feedback from meeting 3.
- Review follow up materials.
- Presentation of additional boundary options
- Discuss next steps and fill out feedback forms.
- Address questions and comments from observers.

Ground Rules

1. Be true to the charge
2. Share openly
3. Participate enthusiastically
4. Give and receive constructive feedback
5. Appreciate everyone's ideas
6. Suspend judgment
7. Limit discussions to the topic
8. Do homework and be prepared
9. Abide by decisions made by the facilitators
10. Turn off cell phones, set to vibrate, or answer on first ring
11. Start and end meetings on time
12. Step up, step back.

Meeting 3 Feedback

This session was most helpful at:

- ✓ Sharing and discussing options and allowing feedback
- ✓ Looking at the options with respect to the criteria
- ✓ Keeping everyone on topic
- ✓ Explaining options, providing feedback
- ✓ Identifying which criteria works/doesn't work for each option
- ✓ Identifying pros and cons by option

This session was least helpful at:

- Time management
- Providing travel time for all zones that need to be considered
- Addressing travel times for changes to schools other than RMES5

Suggestions for future sessions:

- Leave more time for community feedback
- Spend less time on reviewing previous info and info that is posted
- Prepare and share FAQ's

Follow Ups Requested by Committee

Transportation information

Option	Zone	Current Bus Time	Proposed Bus Time		Option	Zone	Current Bus Time	Proposed Bus Time
1	B3	9	5		3	B3	9	5
1	B7	9	12		3	B7	9	12
1	RP6	7	5		3	RP6	7	5
1	T3	12	11		3	T2	5	10
1	CG3	6	6		3	T2	9	14
2	B3	9	5		3	CG3	6	6
2	B7	9	12		4	B3	9	5
2	RP6	7	5		4	B5	12	13
2	CG3	6	6		4	B6	10	15
					4	CG2	8	11

Google Form Feedback

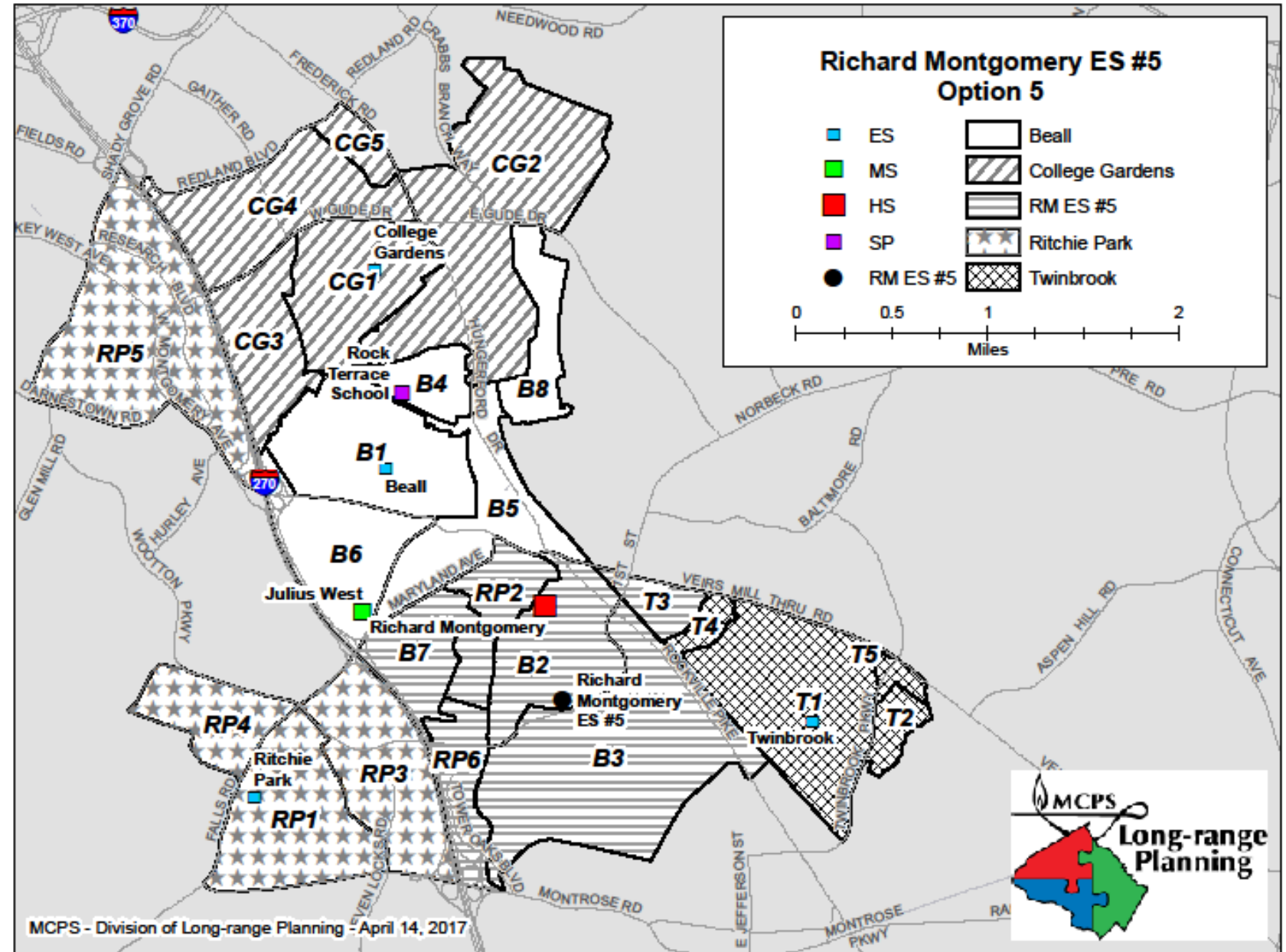
- As of today there are 60 responses
- There have been responses from all cluster schools; primarily from College Gardens and Beall
- There have been few responses from Ritchie Park and Twinbrook
- Comments are similar to what has been shared at our meetings
- Form has now been updated to include the new options and will remain up through the month of May

Committee Criteria

- Minimize splits to community identity, subdivisions, and civic association areas
- Minimize travel time
- Keep schools below 100% utilization and eliminate relocatable classrooms
- Give consideration to community support mechanisms such as community centers
- Promote a diverse student body
- Minimize relocation of students out of their home school
- Reserve space and room for growth for approved plan development
- Consider overcapacity at schools with future shell build out capability
- Minimize a domino effect
- Maximize walkers
- Minimize displacement of home school students by the Chinese Immersion program
- Consider stability of school assignments over time for immersion students

Additional Options 5-7

- B2, B3, and B7 from Beall to RM ES #5.
- Chinese Immersion is moved from College Gardens to RM ES #5.
- RP2 and RP6 from Ritchie Park to RM ES #5.
- T3 from Twinbrook to RM ES #5.



Option 5

	Projected Number of Students						2016–2017							
	2017–2018	Boundary Implement ed	2018–2019	2019–2020	2020–2021	2021–2022	2022–2023	Race/Ethnic Composition					FARMS	ESOL
								% Afr. Amer.	% Asian	% Hispanic	% White	% 2 or More		
Beall Elementary School														
Maximum Number of Seats = 638														
<u>No Change:</u>														
Number of Students	813		849	855	865	872	871							
<i>Percent of Building Occupied</i>	127%		133%	134%	136%	137%	137%	12.1%	24.1%	22.0%	35.4%	6.4%	25.0%	
<i>Available Seats</i>	(175)		(211)	(217)	(227)	(234)	(233)						15.4%	
Reassign zones B2, B3, and B7 to Richard Montgomery Cluster ES #5.														
<u>With Change:</u>														
Number of Students	813		571	584	584	603	628							
<i>Percent of Building Occupied</i>	127%		89%	91%	92%	94%	98%	16.7%	19.5%	19.3%	29.6%	14.9%	35.4%	
<i>Available Seats</i>	(175)		67	55	54	36	10						30.4%	

Option 5

	Projected Number of Students						2016–2017						
	2017–2018	Boundary Implement ed 2018–2019	2019–2020	2020–2021	2021–2022	2022–2023	Race/Ethnic Composition						
							% Afr. Amer.	% Asian	% Hispanic	% White	% 2 or More	% FARMS	% ESOL
College Gardens Elementary School													
Maximum Number of Seats= 693													
<u>No Change:</u>													
Number of Students	879	881	851	848	839	846							
<i>Percent of Building Occupied</i>	127%	127%	123%	122%	121%	122%	17.9%	22.2%	14.4%	38.2%	7.3%	14.5%	14.8%
<i>Available Seats</i>	(186)	(188)	(158)	(155)	(146)	(153)							
Chinese Immersion is moved to Richard Montgomery Cluster ES #5.													
<u>With Change:</u>													
Number of Students	879	722	724	738	731	728							
<i>Percent of Building Occupied</i>	127%	104%	104%	106%	105%	105%	17.5%	23.1%	14.3%	37.9%	7.2%	15.5%	18.4%
<i>Available Seats</i>	(186)	(29)	(31)	(45)	(38)	(35)							

Option 5

	Projected Number of Students						2016–2017						
	2017–2018	Boundary Implemented 2018–2019	2019–2020	2020–2021	2021–2022	2022–2023	Race/Ethnic Composition					FARMS	ESOL
							% Afr. Amer.	% Asian	% Hispanic	% White	% 2 or More		
Richard Montgomery Cluster ES #5													
Maximum Number of Seats= 602													
No Change:													
Number of Students	0	0	0	0	0	0							
Percent of Building Occupied	0%	0%	0%	0%	0%	0%							
Available Seats	602	602	602	602	602	602							
Richard Montgomery Cluster ES #5 attending area is comprised of RP2, RP6, B2, B3, B7, T3, and Chinese Immersion													
With Change:													
Number of Students	0	574	590	594	582	596	10.2%	30.4%	28.7%	26.2%	< 5 %	29.7% *FARM is 37% without CI.	19.8%
Percent of Building Occupied	0%	95%	98%	99%	97%	99%							
Available Seats	0	28	12	8	20	6							

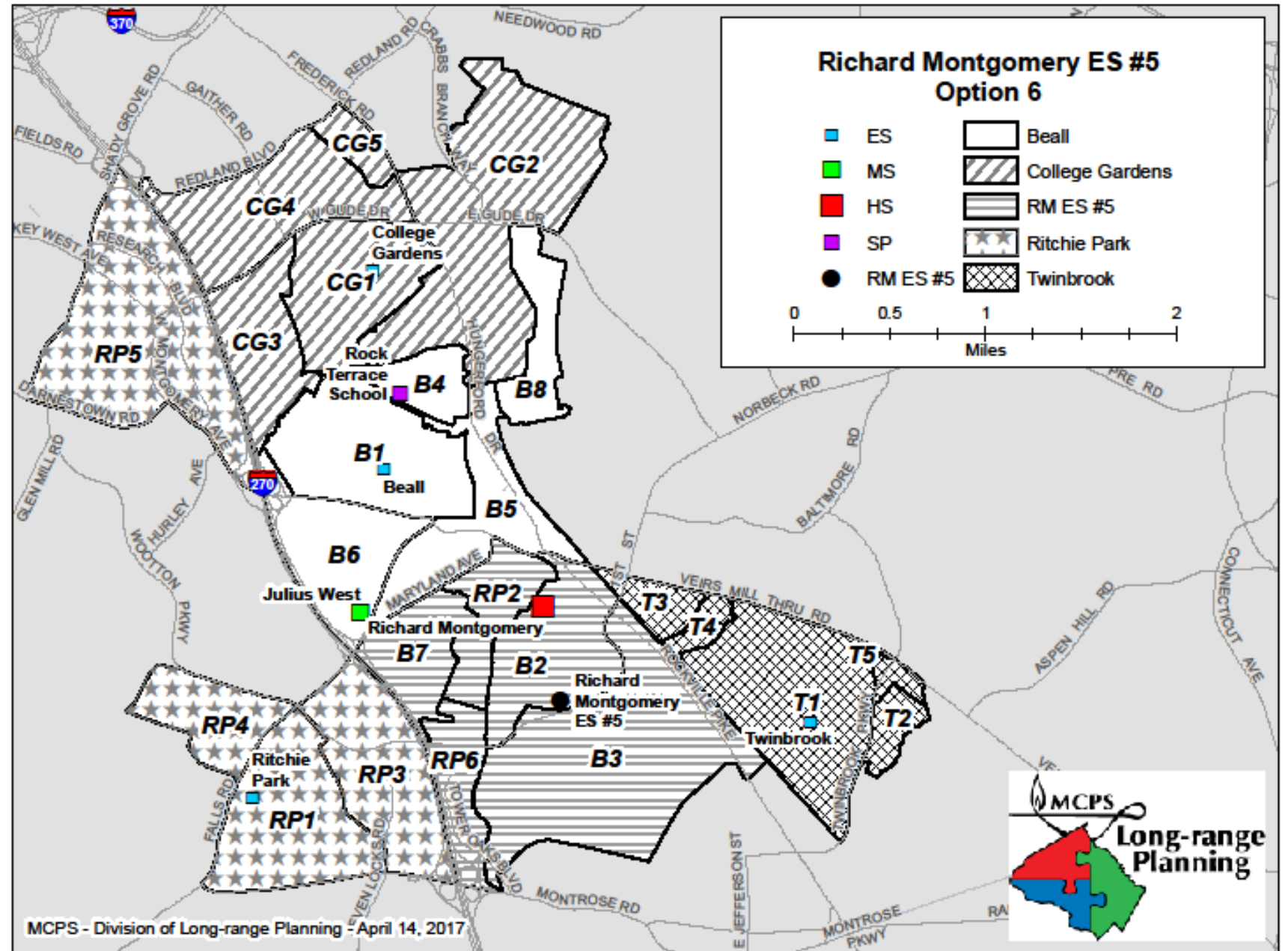
Option 5

	Projected Number of Students						2016–2017					
	2017–2018	Boundary Implemented 2018–2019	2019–2020	2020–2021	2021–2022	2022–2023	Race/Ethnic Composition					
							% Afr. Amer.	% Asian	% Hispanic	% White	% 2 or More	% FARMS
Ritchie Park Elementary School												
Maximum Number of Seats= 387												
<u>No Change:</u>												
Number of Students	506	514	501	490	503	501						
Percent of Building Occupied	131%	133%	129%	127%	130%	129%	12.6%	22.2%	18.1%	41.1%	5.9%	23.0%
Available Seats	(119)	(127)	(114)	(103)	(116)	(114)						11.3%
Reassign zones RP2 and RP6 to Richard Montgomery Cluster ES #5.												
<u>With Change:</u>												
Number of Students	506	373	379	375	379	379						
Percent of Building Occupied	131%	96%	98%	97%	98%	98%	10.5%	19.6%	12.3%	50.5%	7.1%	11.9%
Available Seats	(119)	14	8	12	8	8						6.9%

Option 5

	Projected Number of Students						2016–2017						
	2017–2018	Boundary Implemented 2018–2019	2019–2020	2020–2021	2021–2022	2022–2023	Race/Ethnic Composition						
							% Afr. Amer.	% Asian	% Hispanic	% White	% 2 or More	% FARMS	% ESOL
Twinbrook Elementary School													
Maximum Number of Seats= 553													
<u>No Change:</u>													
Number of Students	575	593	587	599	596	581							
<i>Percent of Building Occupied</i>	104%	107%	106%	108%	108%	105%	10.7%	13.5%	61.0%	11.4%	< 5 %	68.7%	50.1%
<i>Available Seats</i>	(22)	(40)	(34)	(46)	(43)	(28)							
Reassign zone T3 to Richard Montgomery Cluster ES # 5.													
<u>With Change:</u>													
Number of Students	575	513	506	512	514	523							
<i>Percent of Building Occupied</i>	104%	93%	92%	93%	93%	95%	11.2%	13.6%	60.9%	10.3%	< 5 %	60.1%	45.0%
<i>Available Seats</i>	(22)	40	47	41	39	30							

- B2, B3, and B7 from Beall to RM ES #5.
- Chinese Immersion is moved from College Gardens to RM ES #5.
- RP2 and RP6 from Ritchie Park to RM ES #5.



Option 6

	Projected Number of Students						2016–2017						
	2017–2018	Boundary Implement ed	2018–2019	2019–2020	2020–2021	2021–2022	2022–2023	Race/Ethnic Composition					
								% Afr. Amer.	% Asian	% Hispanic	% White	% 2 or More	% FARMS
Beall Elementary School													
Maximum Number of Seats = 638													
<u>No Change:</u>													
Number of Students	813	849	855	865	872	871							
<i>Percent of Building Occupied</i>	127%	133%	134%	136%	137%	137%	12.1%	24.1%	22.0%	35.4%	6.4%	25.0%	15.4%
<i>Available Seats</i>	(175)	(211)	(217)	(227)	(234)	(233)							
Reassign zones B2, B3, and B7 to Richard Montgomery Cluster ES #5.													
<u>With Change:</u>													
Number of Students	813	571	584	584	603	628							
<i>Percent of Building Occupied</i>	127%	89%	91%	92%	94%	98%	16.7%	19.5%	19.3%	29.6%	14.9%	35.4%	30.4%
<i>Available Seats</i>	(175)	67	55	54	36	10							

Option 6

	Projected Number of Students						2016–2017						
	2017–2018	Boundary Implement ed 2018–2019	2019–2020	2020–2021	2021–2022	2022–2023	Race/Ethnic Composition						
							% Afr. Amer.	% Asian	% Hispanic	% White	% 2 or More	% FARMS	% ESOL
College Gardens Elementary School													
Maximum Number of Seats= 693													
<u>No Change:</u>													
Number of Students	879	881	851	848	839	846							
<i>Percent of Building Occupied</i>	127%	127%	123%	122%	121%	122%	17.9%	22.2%	14.4%	38.2%	7.3%	14.5%	14.8%
<i>Available Seats</i>	(186)	(188)	(158)	(155)	(146)	(153)							
Chinese Immersion is moved to Richard Montgomery Cluster ES #5.													
<u>With Change:</u>													
Number of Students	879	722	724	738	731	728							
<i>Percent of Building Occupied</i>	127%	104%	104%	106%	105%	105%	17.5%	23.1%	14.3%	37.9%	7.2%	15.5%	18.4%
<i>Available Seats</i>	(186)	(29)	(31)	(45)	(38)	(35)							

Option 6

	Projected Number of Students						2016–2017						
	2017–2018	Boundary Implemented 2018–2019	2019–2020	2020–2021	2021–2022	2022–2023	Race/Ethnic Composition					FARMS	ESOL
							% Afr. Amer.	% Asian	% Hispanic	% White	% 2 or More		
Richard Montgomery Cluster ES #5													
Maximum Number of Seats = 602													
No Change:													
Number of Students		0	0	0	0	0							
Percent of Building Occupied		0%	0%	0%	0%	0%							
Available Seats		602	602	602	602	602							
Richard Montgomery Cluster ES #5 attending area is comprised of RP2, RP6, B2, B3, B7, and Chinese Immersion.													
With Change:													
Number of Students		530	542	549	536	550	11.9%	33.2%	22.5%	26.8%	5.7%	29.9%	
Percent of Building Occupied		88%	90%	91%	89%	91%						19.6%	
Available Seats		72	60	53	66	52						*FARM is 38% without Cl.	

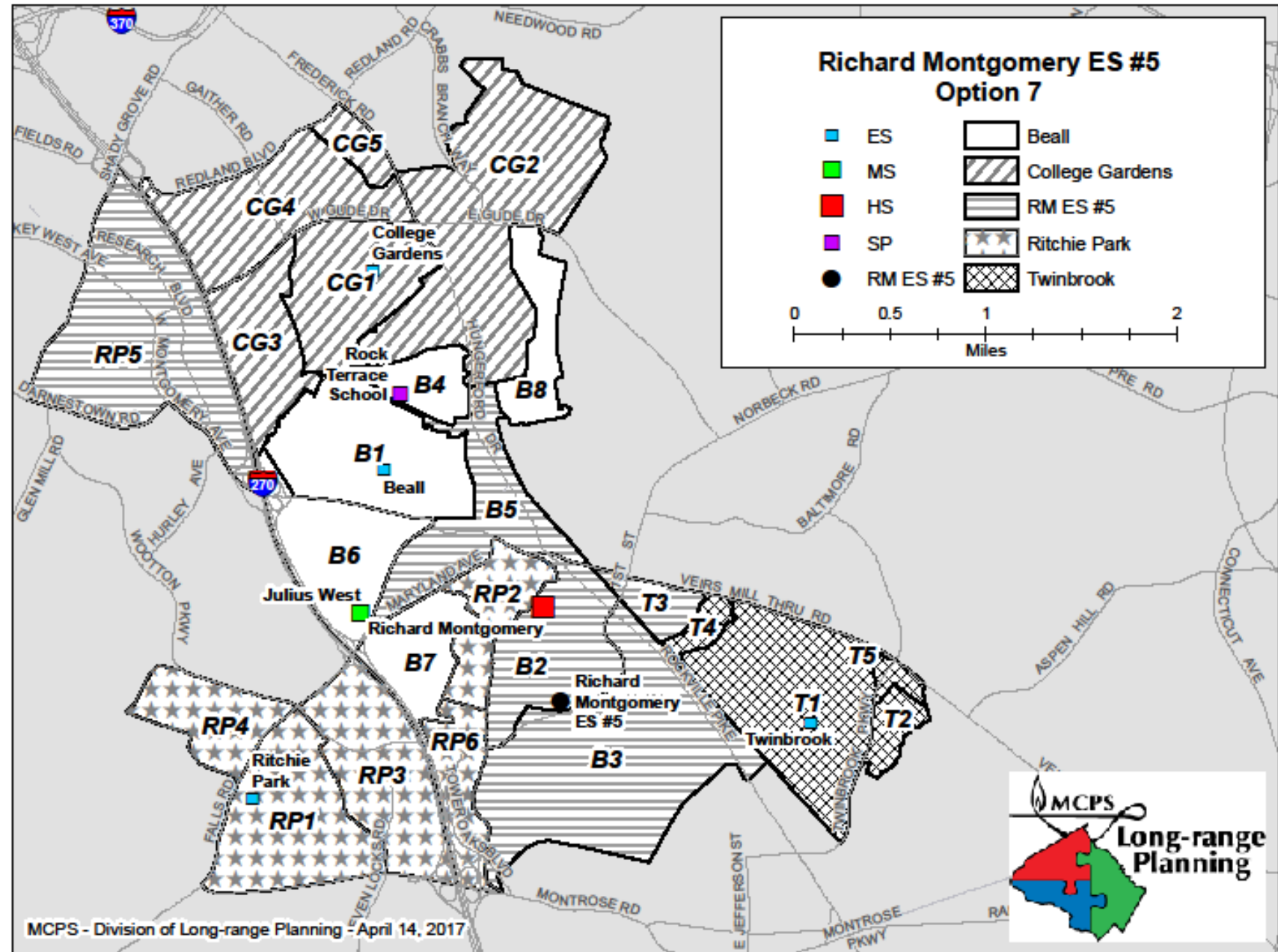
Option 6

	Projected Number of Students						2016–2017						
	2017–2018	Boundary Implemented 2018–2019	2019–2020	2020–2021	2021–2022	2022–2023	Race/Ethnic Composition						
							% Afr. Amer.	% Asian	% Hispanic	% White	% 2 or More	% FARMS	% ESOL
Ritchie Park Elementary School													
Maximum Number of Seats= 387													
<u>No Change:</u>													
Number of Students	506	514	501	490	503	501							
<i>Percent of Building Occupied</i>	131%	133%	129%	127%	130%	129%	12.6%	22.2%	18.1%	41.1%	5.9%	23.0%	11.3%
<i>Available Seats</i>	(119)	(127)	(114)	(103)	(116)	(114)							
Reassign zones RP2 and RP6 to Richard Montgomery Cluster ES #5.													
<u>With Change:</u>													
Number of Students	506	373	379	375	379	379							
<i>Percent of Building Occupied</i>	131%	96%	98%	97%	98%	98%	10.5%	19.6%	12.3%	50.5%	7.1%	11.9%	6.9%
<i>Available Seats</i>	(119)	14	8	12	8	8							

Option 6

	Projected Number of Students						2016–2017							
	2017–2018	Boundary Implement ed	2018–2019	2019–2020	2020–2021	2021–2022	2022–2023	Race/Ethnic Composition					FARMS	ESOL
								% Afr. Amer.	% Asian	% Hispanic	% White	% 2 or More		
Twinbrook Elementary School														
Maximum Number of Seats= 553														
<u>No Change:</u>														
Number of Students	575	593	587	599	596	581								
<i>Percent of Building Occupied</i>	104%	107%	106%	108%	108%	105%	10.7%	13.5%	61.0%	11.4%	< 5%	68.7%	50.1%	
<i>Available Seats</i>	(22)	(40)	(34)	(46)	(43)	(28)								
<u>No Boundary Change</u>														
<u>With Change:</u>														
Number of Students	575	593	587	599	596	581								
<i>Percent of Building Occupied</i>	104%	107%	106%	108%	108%	105%	10.7%	13.5%	61.0%	11.4%	< 5%	68.7%	50.1%	
<i>Available Seats</i>	(22)	(40)	(34)	(46)	(43)	(28)								

- B2, B3, and B5 from Beall to RM ES #5.
- Chinese Immersion is moved from College Gardens to RM ES #5.
- RP5 from Ritchie Park to RM ES #5.
- T3 from Twinbrook to RM ES # 5.



Option 7

	Projected Number of Students						2016–2017						
	2017–2018	Boundary Implemented 2018–2019	2019–2020	2020–2021	2021–2022	2022–2023	Race/Ethnic Composition						
							% Afr. Amer.	% Asian	% Hispanic	% White	% 2 or More	% FARMS	% ESOL
Beall Elementary School													
Maximum Number of Seats = 638													
<u>No Change:</u>													
Number of Students	813	849	855	865	872	871							
<i>Percent of Building Occupied</i>	127%	133%	134%	136%	137%	137%	12.1%	24.1%	22.0%	35.4%	6.4%	25.0%	15.4%
<i>Available Seats</i>	(175)	(211)	(217)	(227)	(234)	(233)							
Reassign zones B2, B3, and B5 to Richard Montgomery Cluster ES #5.													
<u>With Change:</u>													
Number of Students	813	536	548	542	552	575							
<i>Percent of Building Occupied</i>	127%	84%	86%	85%	86%	90%	16.1%	20.2%	19.2%	29.5%	15.1%	35.6%	30.2%
<i>Available Seats</i>	(175)	102	90	96	86	63							

Option 7

	Projected Number of Students						2016–2017						
	2017–2018	Boundary Implement ed 2018–2019	2019–2020	2020–2021	2021–2022	2022–2023	Race/Ethnic Composition						
							% Afr. Amer.	% Asian	% Hispanic	% White	% 2 or More	% FARMS	% ESOL
College Gardens Elementary School													
Maximum Number of Seats= 693													
<u>No Change:</u>													
Number of Students	879	881	851	848	839	846							
<i>Percent of Building Occupied</i>	127%	127%	123%	122%	121%	122%	17.9%	22.2%	14.4%	38.2%	7.3%	14.5%	14.8%
<i>Available Seats</i>	(186)	(188)	(158)	(155)	(146)	(153)							
Chinese Immersion is moved to Richard Montgomery Cluster ES #5.													
<u>With Change:</u>													
Number of Students	879	722	724	738	731	728							
<i>Percent of Building Occupied</i>	127%	104%	104%	106%	105%	105%	17.5%	23.1%	14.3%	37.9%	7.2%	15.5%	18.4%
<i>Available Seats</i>	(186)	(29)	(31)	(45)	(38)	(35)							

Option 7

	Projected Number of Students					2016–2017							
	Boundary Implemented						Race/Ethnic Composition						
		2017–2018	2018–2019	2019–2020	2020–2021	2021–2022	2022–2023	% Afr. Amer.	% Asian	% Hispanic	% White	% 2 or More	% FARMs
Richard Montgomery Cluster ES #5													
Maximum Number of Seats = 602													
No Change:													
Number of Students		0	0	0	0	0							
Percent of Building Occupied		0%	0%	0%	0%	0%							
Available Seats		602	602	602	602	602							
Richard Montgomery Cluster ES #5 attending area is comprised of RP5, B2, B3, B5, T3, and Chinese Immersion.													
With Change:													
Number of Students		609	620	632	635	643	12.3%	29.8%	19.7%	32.7%	5.6%	22.9%	18.0%
Percent of Building Occupied		101%	103%	105%	105%	107%						*FARM is 28.1% without CI.	
Available Seats		(7)	(18)	(30)	(33)	(41)							

Option 7

	Projected Number of Students						2016–2017							
	2017–2018	Boundary Implement ed	2018–2019	2019–2020	2020–2021	2021–2022	2022–2023	Race/Ethnic Composition						
								% Afr. Amer.	% Asian	% Hispanic	% White	% 2 or More	% FARMS	% ESOL
Ritchie Park Elementary School														
Maximum Number of Seats= 387														
<u>No Change:</u>														
Number of Students	506	514	501	490	503	501								
<i>Percent of Building Occupied</i>	131%	133%	129%	127%	130%	129%	12.6%	22.2%	18.1%	41.1%	5.9%	23.0%	11.3%	
<i>Available Seats</i>	(119)	(127)	(114)	(103)	(116)	(114)								
Reassign zone RP5 to Richard Montgomery Cluster ES #5.														
<u>With Change:</u>														
Number of Students	506	373	385	379	377	385								
<i>Percent of Building Occupied</i>	131%	96%	99%	98%	97%	99%	11.2%	20.1%	20.6%	41.4%	6.7%	25.9%	12.2%	
<i>Available Seats</i>	(119)	14	2	8	10	2								

Option 7

	Projected Number of Students						2016–2017						
	2017–2018	Boundary Implement ed 2018–2019	2019–2020	2020–2021	2021–2022	2022–2023	Race/Ethnic Composition						
							% Afr. Amer.	% Asian	% Hispanic	% White	% 2 or More	% FARMS	% ESOL
Twinbrook Elementary School													
Maximum Number of Seats= 553													
<u>No Change:</u>													
Number of Students	575	593	587	599	596	581							
<i>Percent of Building Occupied</i>	104%	107%	106%	108%	108%	105%	10.7%	13.5%	61.0%	11.4%	< 5%	68.7%	50.1%
<i>Available Seats</i>	(22)	(40)	(34)	(46)	(43)	(28)							
Reassign zone T3 to Richard Montgomery Cluster ES # 5.													
<u>With Change:</u>													
Number of Students	575	513	506	512	514	523							
<i>Percent of Building Occupied</i>	104%	93%	92%	93%	93%	95%	11.2%	13.6%	60.9%	10.3%	< 5%	60.1%	45.0%
<i>Available Seats</i>	(22)	40	47	41	39	30							

Next Steps

Example Evaluation Form

Representative: John Doe	Meets Criterion	Does not Meet Criterion	School:
Evaluation Criteria	Option Number	Option Number	Narrative Evaluation Statement
Keep communities together.		1-5	Arora Hills community is split by phases 1 & 2/3 & 4
Minimize travel distances to schools and maximize walking access.	all		I think they are all about the same. Some schools could have more walkers with the addition of crossing guards.
Ensure safe walking access for students.	?	?	Again – some safe walking depends on crossing guards, stop signs, lights, etc.
Minimize island assignments and promote contiguous service areas.	all		Don't think there are any island assignments.
Keep schools within their capacities.	4	1, 2, 3, 5-7	Option #4 keeps each of the three schools projected enrollment closest to capacity, not putting one school way over and one another under. I feel all schools should be equally utilized to their intended capacity.
Maintain diversity at schools	1-7		Looks fairly even across the board.
Distribute areas with future development to multiple schools.	?	?	

Additional Comments:

Option 7 is best for the residents of Sycamore Farm Drive (CG 8b). They are included with the rest of CV in this option. There are 23 families that live on that road and most of the street signed a “petition” stating they want to go to the new school and stay with the rest of their community. The few that did not sign it were not home over a 2 week period to answer the door.

Option 4 is also good because it utilizes the three schools capacities the best. I feel that is important so no one school is “stripped of staffing.”

Example PTA Position Paper

Cedar Grove Elementary School Parent Teacher Association

May 26, 2013

Dr. Joshua Starr, Superintendent and
Members of the Montgomery County Board Of Education
850 Hungerford Drive
Rockville, MD 20850

Re: Boundary Study for the new Clarksburg Village Elementary School

Dear Dr. Starr and Members of the Board of Education:

The Cedar Grove Elementary School PTA members thank you for allowing us to be a part of this boundary study for the new elementary school in Clarksburg Village. The Cedar Grove community is in agreement that MCPS should adopt Option 10. Option 10 meets 8 of the 9 criteria set forth by the Boundary Advisory Committee.

Option 10 clearly meets the following criteria explained below:

- Keep communities together.
- Avoid reassignment of areas that were reassigned in past boundary changes.
- Minimize travel distances to schools and maximize walking access.
- Consider the impact of the opening of the new Clarksburg/Damascus Middle School in August 2016.
- Ensure safe walking access for students.
- Minimize island assignments and promote contiguous service areas.
- Maintain diversity at schools, including race/ethnic, FARMS, and ESOL.
- Distribute area with future development to multiple schools.

Questions?

- Committee questions
- Observer questions

Committee Schedule

All meetings will be held from 7:00 p.m. to 9:00 p.m. at College Gardens ES

- | | | |
|----------|--------------|--|
| | Feb 28 | First Community-wide meeting to present process and timeline |
| 1 | Mar 15 | Committee charge, overview of process, timeline, review of zones to build options, development of criteria to evaluate options |
| 2 | Mar 23 | Staff presents first set of options |
| 3 | Apr 5 | Feedback on first set of options |
| 4 | Apr 25 | If needed, staff presents a second set of options. |
| 5 | May 3 | Feedback on second set of options and draft committee report. |
| | May 9 | Second Community-wide meeting to present options and get feedback. |
| 6 | May 17 | Committee members submit option evaluations and schools submit position papers (If needed) |

www.montgomeryschoolsmd.org/departments/planning/rmes.aspx

Thank you for attending.

All materials will be posted on the following website:

www.montgomeryschoolsmd.org/departments/planning/rmes.aspx