

Richard Montgomery Elementary School #5 Boundary Study

Communitywide Public Information Meeting 1

February 28, 2017

www.montgomeryschoolsmd.org/departments/planning/rmes.aspx



MONTGOMERY COUNTY PUBLIC SCHOOLS



Agenda

- Enrollment Trends
- Planning for Enrollment Growth
- Elementary Schools Boundary Study
- Boundary Study Process
 - Three Phases
- Questions and Answers

Ground Rules

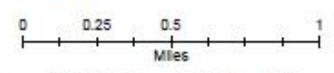
- Honor meeting time and follow the agenda
- Practice cell phone etiquette
- Listen to ideas of others with an open mind
- Honor the differences of opinion
- Share ideas to add on and not repeat
- Speak your truth from your own experience
- Respect others' knowledge, experiences, and opinions

Charge

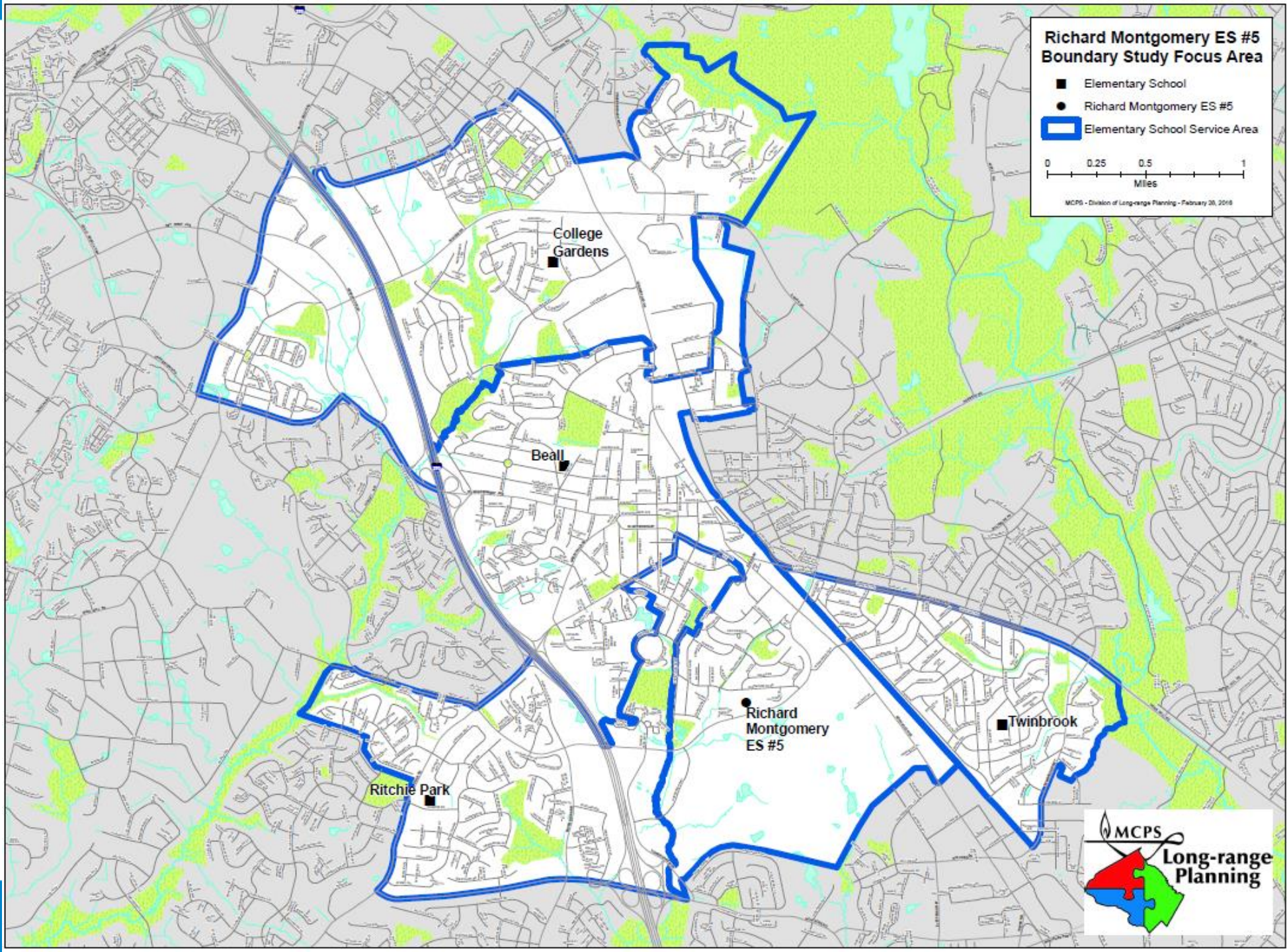
- In November 2016, the Superintendent authorized a boundary study to review options for the service area of the new RM Elementary School #5, and the associated changes to the cluster elementary schools
- The scope of the boundary study is the service areas of Beall, College Gardens, Ritchie Park, and Twinbrook Elementary Schools
- In November 18, 2010 the Board of Education stated in a Resolution that the Chinese Immersion Program would be reassigned when the new school opens to another elementary school in the RM Cluster
- No middle or high school boundaries will change as a result of the boundary study

Richard Montgomery ES #5 Boundary Study Focus Area

- Elementary School
- Richard Montgomery ES #5
- ▭ Elementary School Service Area



MCPS - Division of Long-range Planning - February 20, 2018

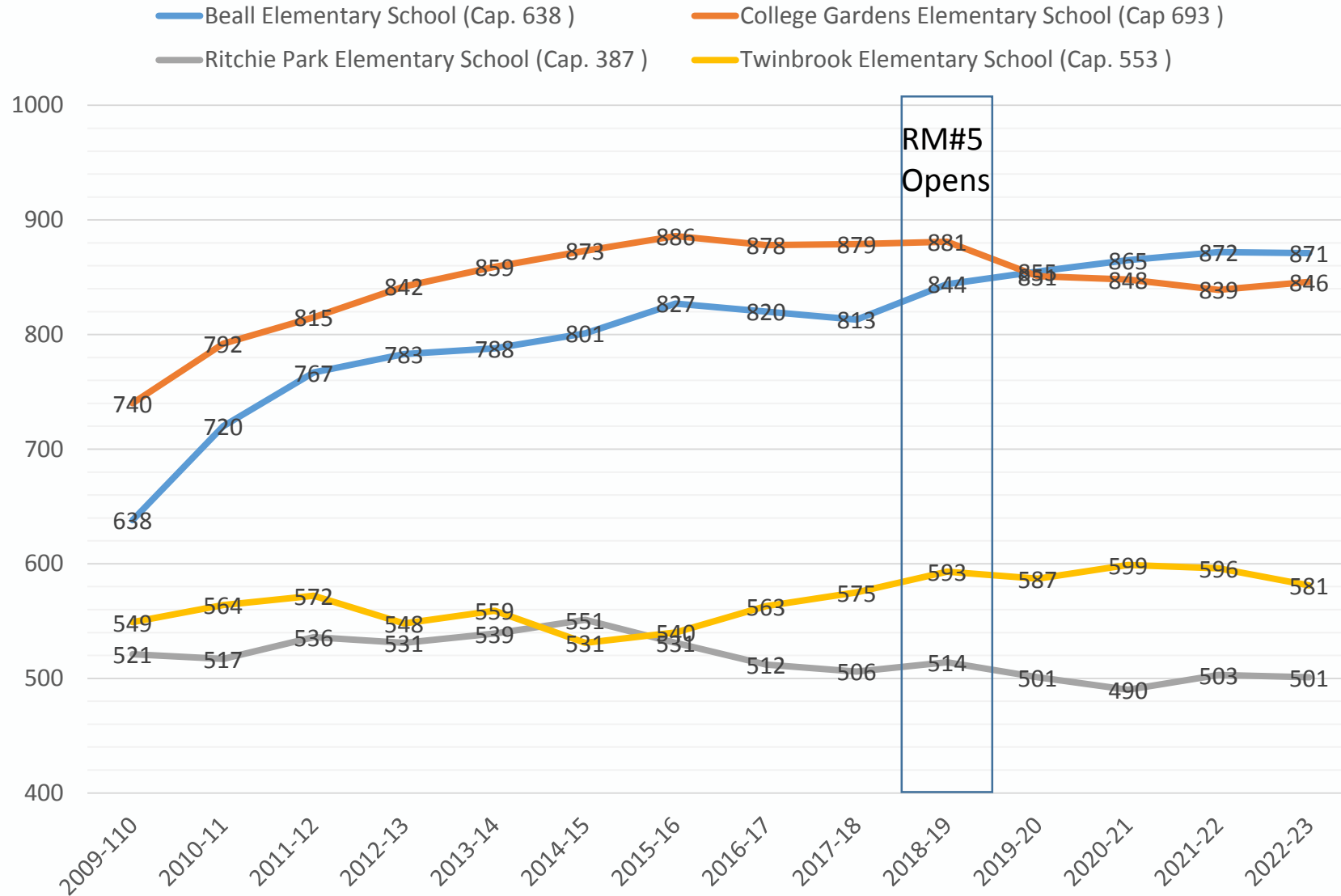


Richard Montgomery Cluster Elementary Enrollment Trends

- Since 2007 elementary schools in the Richard Montgomery cluster have increased by 739 students
- The only capacity added at the elementary level in this cluster was a renovation/expansion of College Gardens Elementary School in 2008
- Capacity utilization of all elementary schools in the cluster is 122%
- Relocatable classrooms are used to provide capacity in the interim

School Name	2016-17	2017-18	2018-19	2019-20	2020-21	2021-22	2022-23
Beall Elementary School							
Enrollment	820	813	844	855	865	872	871
Capacity	638	638	638	638	638	638	638
<i>% Utilization</i>	129%	127%	132%	134%	136%	137%	137%
<i>Available space</i>	(182)	(175)	(206)	(217)	(227)	(234)	(233)
College Gardens Elementary School							
Enrollment	878	879	881	851	848	839	846
Capacity	693	693	693	693	693	693	693
<i>% Utilization</i>	127%	127%	127%	123%	122%	121%	122%
<i>Available space</i>	(185)	(186)	(188)	(158)	(155)	(146)	(153)
Ritchie Park Elementary School							
Enrollment	512	506	514	501	490	503	501
Capacity	387	387	387	387	387	387	387
<i>% Utilization</i>	132%	131%	133%	129%	127%	130%	129%
<i>Available space</i>	(125)	(119)	(127)	(114)	(103)	(116)	(114)
Twinbrook Elementary School							
Enrollment	563	575	593	587	599	596	581
Capacity	553	553	553	553	553	553	553
<i>% Utilization</i>	102%	104%	107%	106%	108%	108%	105%
<i>Available space</i>	(10)	(22)	(40)	(34)	(46)	(43)	(28)

Enrollment Trends Richard Montgomery Cluster



Richard Montgomery Cluster Secondary Enrollment Trends

- Middle School enrollment in the cluster has been addressed through an addition at Julius West Middle school which was recently completed
- High school enrollment in the cluster is on the rise and a feasibility study was recently completed for an addition at Richard Montgomery High School

Audience Poll



Richard Montgomery ES #5

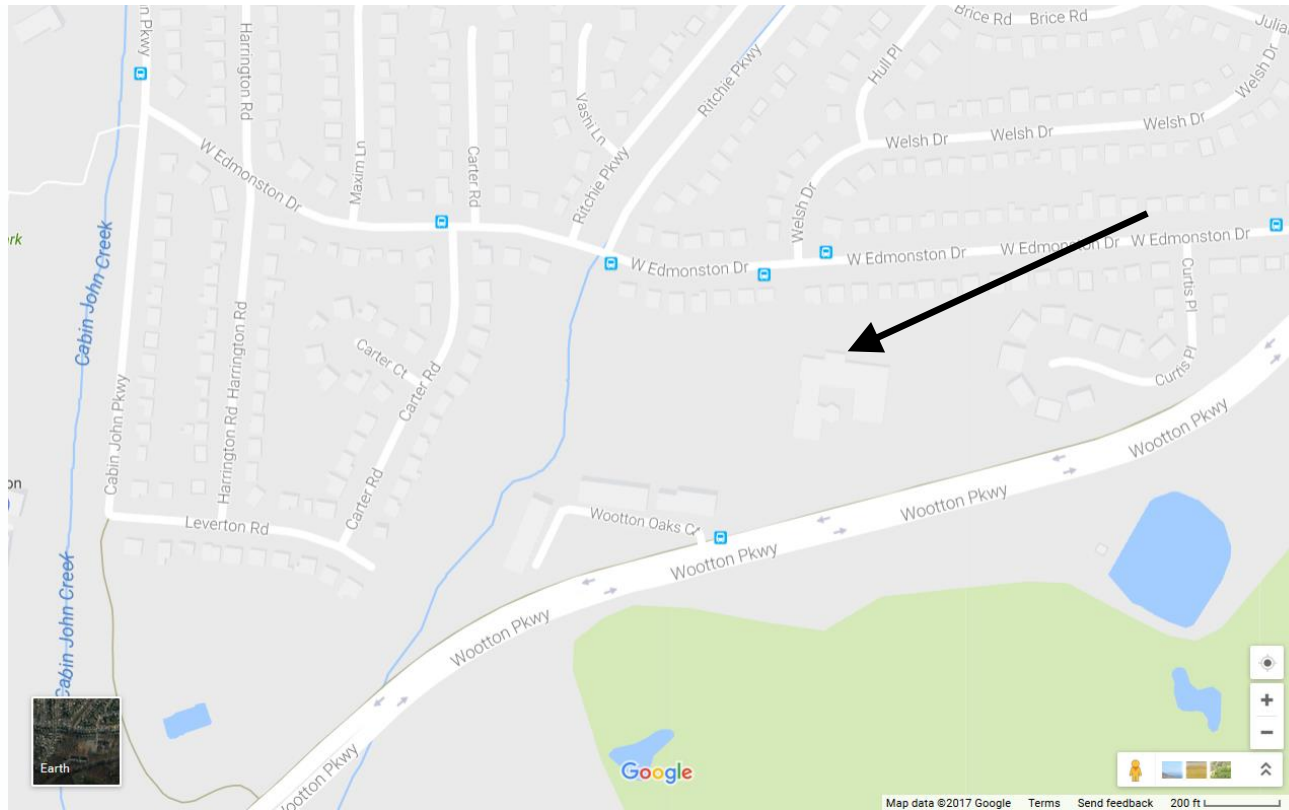
- Initial capacity of 602 with core spaces designed to accommodate 740 students
- Unfinished 6 classroom shell space could be built out in the future to increase the capacity to 740
- 27 classrooms including 2 special education classrooms
- 10.9 acre site
- The site was formerly the Hungerford Park Elementary School which closed in 1982.
- The Children's Resource Center ceased operations at this site in 2016



Demolition
underway

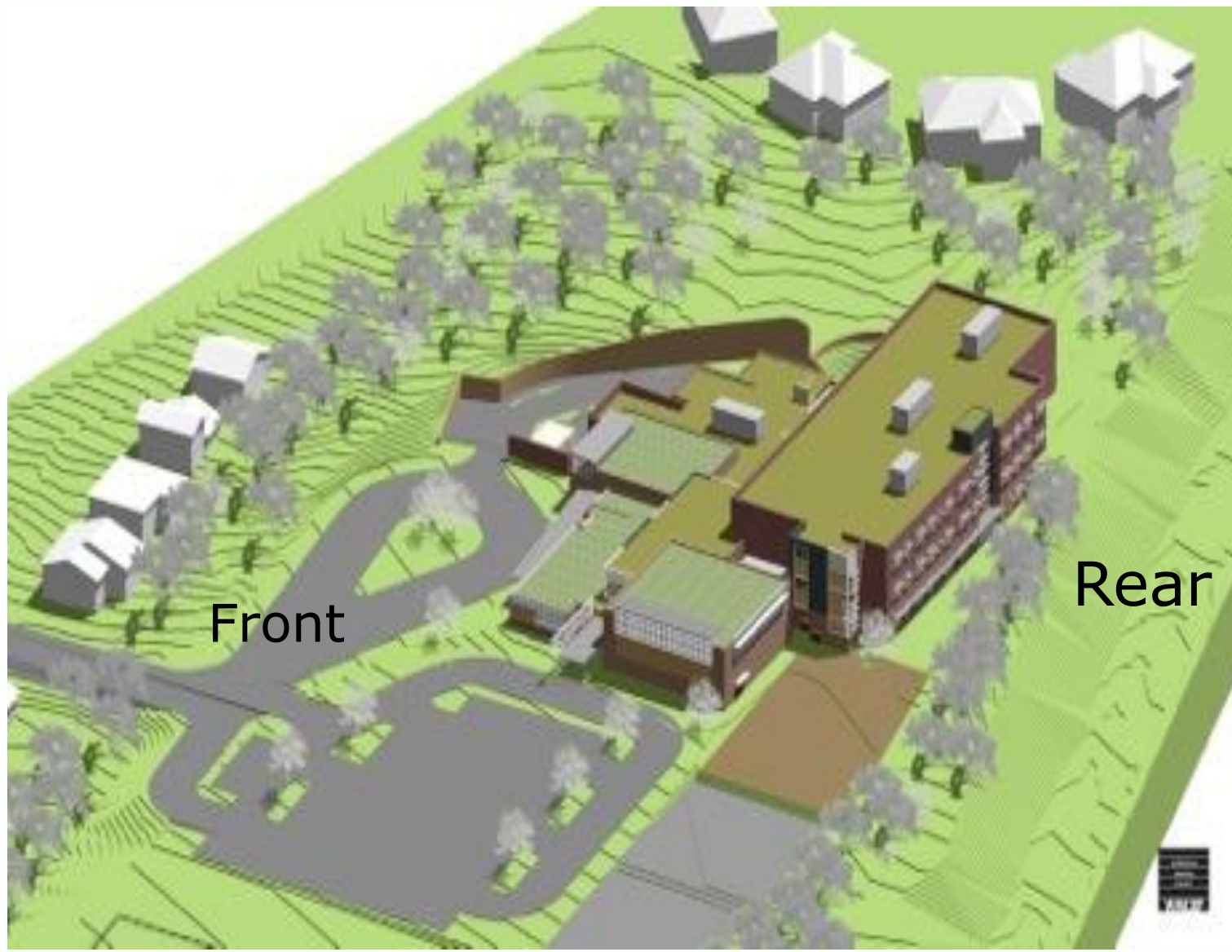
RM ES #5 Location

332 West Edmondson Drive, Rockville, MD



Richard Montgomery ES #5 Renderings







Boundary Review Process

Three Phases:

- Boundary Advisory Committee review
- Superintendent's recommendation
- Board of Education review, public hearing, and decision

Phase 1 Boundary Advisory Committee Process

- Identify important community issues – develop committee criteria
- Representatives evaluate boundary options developed by MCPS staff using committee criteria
- PTA and other organizations represented on the BAC may submit position papers for committee report
- Feedback forms collected at all meetings

Committee Membership

- Two parent representatives from each affected elementary school PTA
- One parent representative from the Chinese Immersion Program
- One parent representative from the NAACP Parents Council
- One parent representative from the Latino Student Achievement Action Group (LSAAG)
- Three Richard Montgomery Cluster Coordinators
- One parent representative from the Asian American Student Achievement Action Group
- One parent representative from the African American Student Achievement Action Group

Role of Committee Members

- Generate committee criteria that will be used by MCPS staff to develop boundary options
- Evaluate MCPS staff developed options using the committee criteria
- Inform the school communities they represent about the committee work and share community feedback with the committee

Role of Observers

- Welcome to attend any and all meetings
- Observer questions and comments will be addressed at the end of each meeting
- Respectfully please hold questions until such time
- Complete feedback forms

Role of MCPS Facilitators and Staff

- Facilitate committee meetings
- Develop boundary options
- Provide information requested by the committee
- Compile committee report

Board of Education Policy

Board of Education Policy *FAA – Long-range Educational Facilities Planning*, lists four main factors to consider in developing school boundaries:

- Demographic characteristics of student population
- Geographic proximity of communities to schools
- Stability of school assignments over time
- Facility utilization

Committee Schedule

All meetings will be held from 7:00 p.m. to 9:00 p.m. at College Gardens ES

Feb 28		First Community-wide meeting to present process and timeline
1	Mar 15	Committee charge, overview of process, timeline, review of zones to build options, development of criteria to evaluate options
2	Mar 23	Staff presents first set of options
3	Apr 5	Feedback on first set of options
4	Apr 25	If needed, staff presents a second set of options.
5	May 3	Feedback on second set of options and draft committee report.
May 9		Second Community-wide meeting to present options and get feedback.
6	May 17	Committee members submit option evaluations and schools submit position papers

Committee Report

- Description of committee process and participants
- Explanation of the committee criteria
 - Discussion of implementation issues
- Individual member evaluation of options
- Attachments including position papers (optional)

Phase 2: Superintendent's Recommendation

- Committee report received by June 1, 2017
- Superintendent's recommendation released mid-October 2017

Phase 3: Board of Education Review

- Work session in early November 2017
- Public hearing mid-November 2017
- Decision on boundaries by end of November 2017
- Boundary changes effective September 2018 with opening of new school

Frequently Asked Questions and Answers

- How was the school site selected?
- Can I visit the school site?
- When will the principal be appointed?
- When will the school be named?
- Can I talk to my school principal about the boundary study?

Frequently Asked Questions and Answers

- Will the Chinese Immersion Program move?
- Will the rising 5th grade class stay at their current school?
- Will the new school have any special programs?
- How will the new school be staffed?

Other Questions?

Thank you for attending

All materials will be posted on the following website:

www.montgomeryschoolsmd.org/departments/planning/rmes.aspx

MCPS Division of Construction web link:

<http://www.montgomeryschoolsmd.org/departments/facilities/construction/project/rmes.aspx>