

Montgomery County Public Schools

Cold Spring Elementary School Feasibility Study

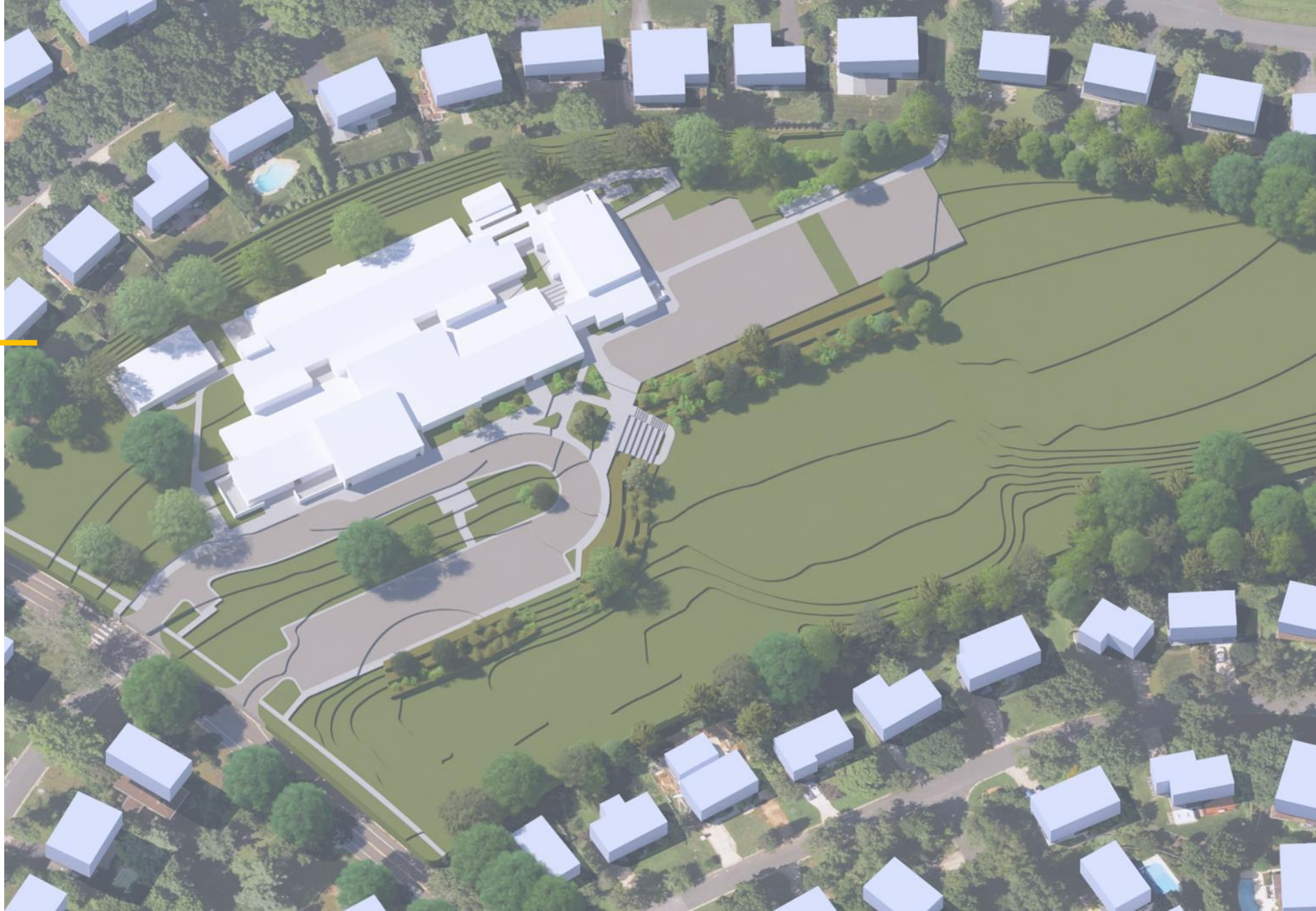
May 12, 2025





Introductions

- MCPS
- GWWO





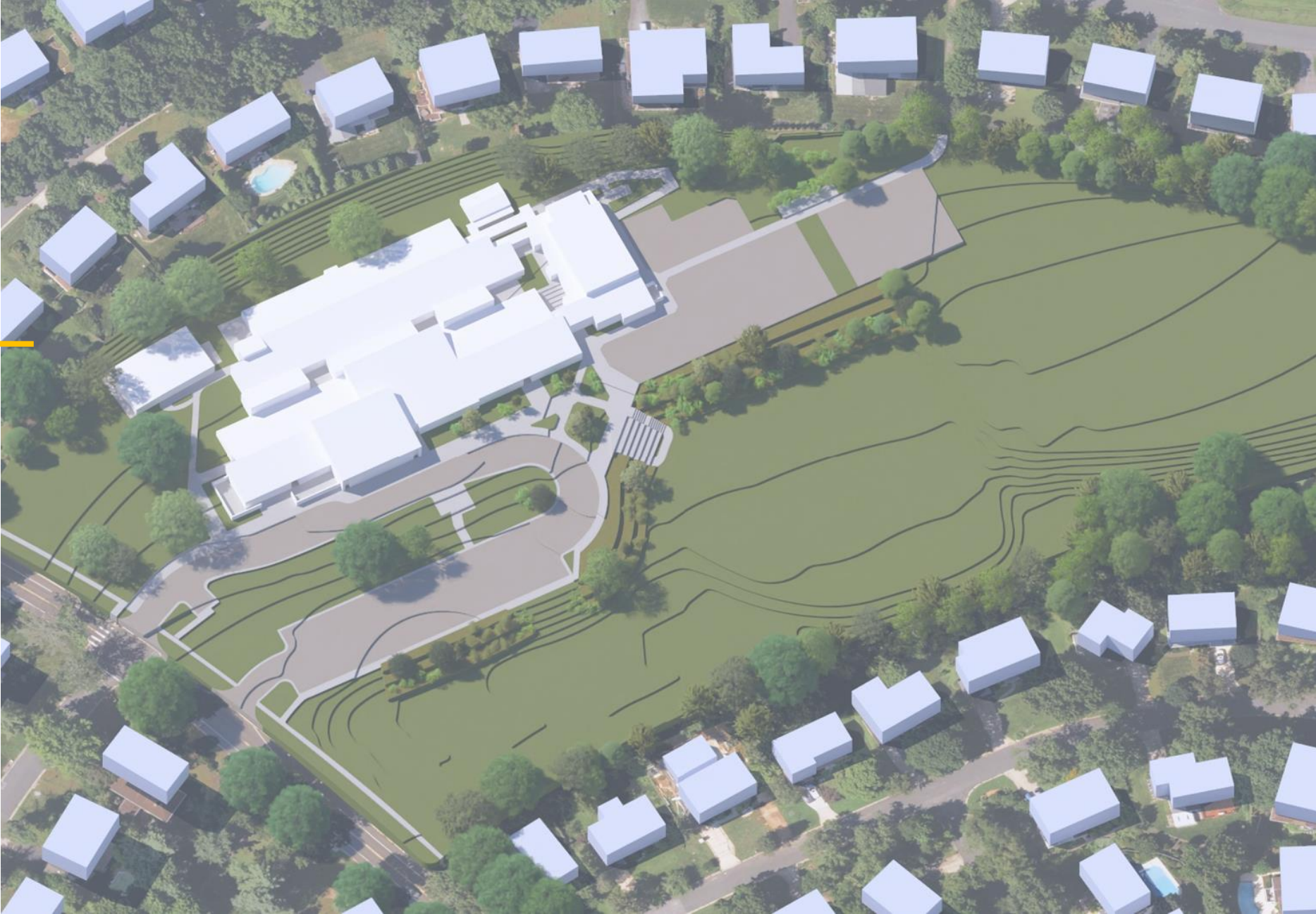
Agenda

- Meeting Schedule
- Existing Site
- Existing Conditions
- Program & Ed Spec Comparison
- Feasibility Study Process
- Community Feedback





Meeting Schedule



Feasibility Study Development Meetings

Community Engagement Meeting #1

- Listening and Information Gathering

Community Engagement Meeting #2

- Concept Design

Community Engagement Meeting #3 (Virtual)

- Plan Option Review

Community Engagement Meeting #4 (Virtual)

- Review of Final Options
- Evaluation of results

May 12, 2025 at 7pm

June 9, 2025 at 7pm

September 8, 2025 at 7pm

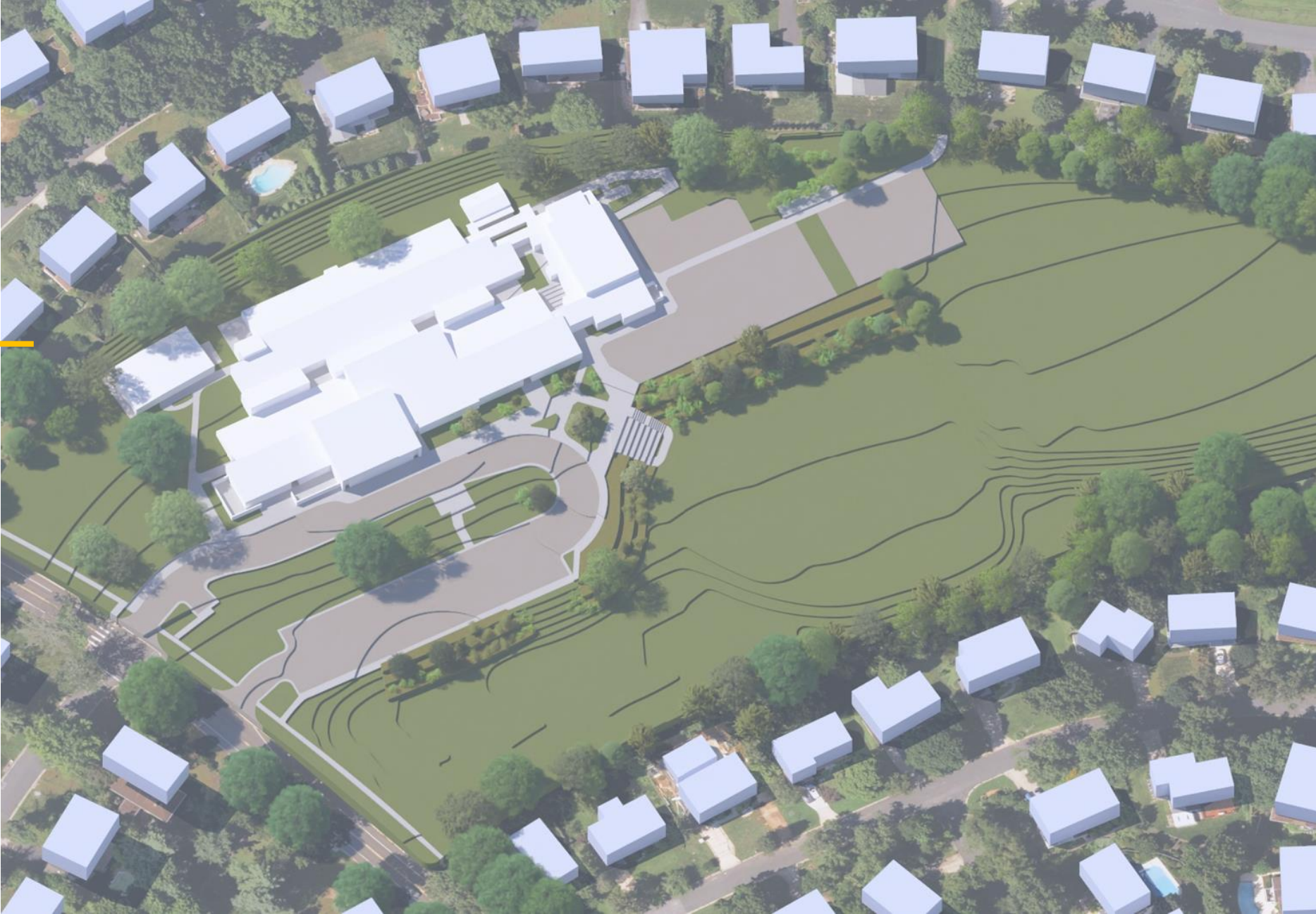
September 22, 2025 at 7pm



Meeting Schedule



Existing Site



Cold Spring Elementary School

12.38 acres

- Some presence on Falls Chapel Way
- Flood plain building restriction line north of existing (plan south)
- Terraced outdoor spaces
- Drop-off queuing
- Service near main entry
- Portables
- Adjacent daycare



Existing Site



Existing Conditions



Cold Spring Elementary School

55,158 SF

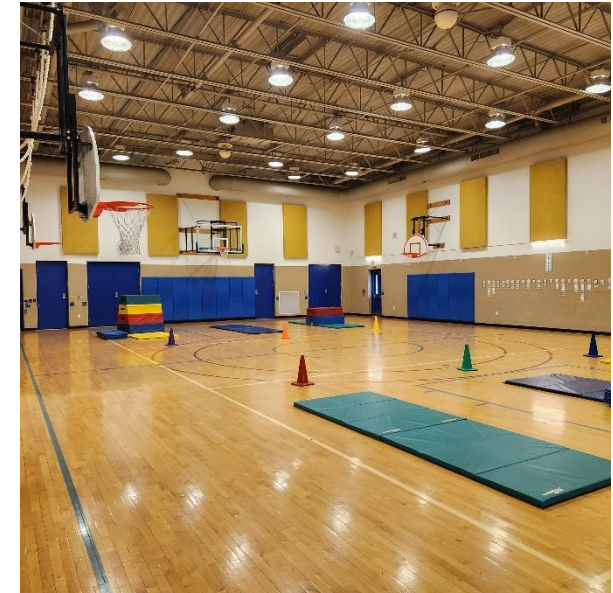
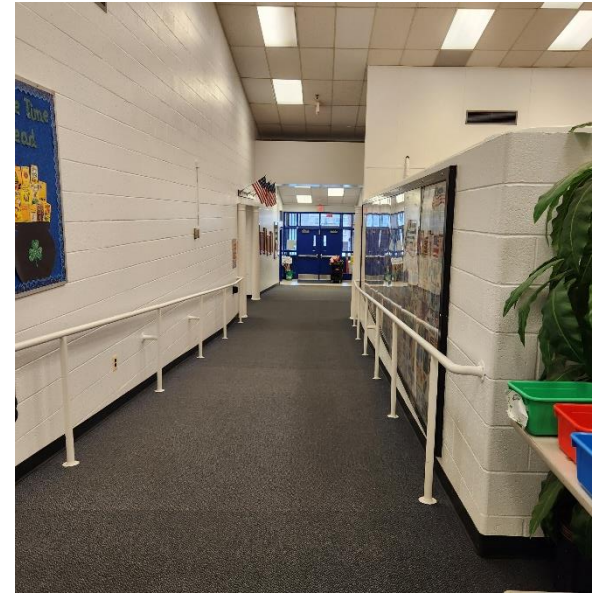
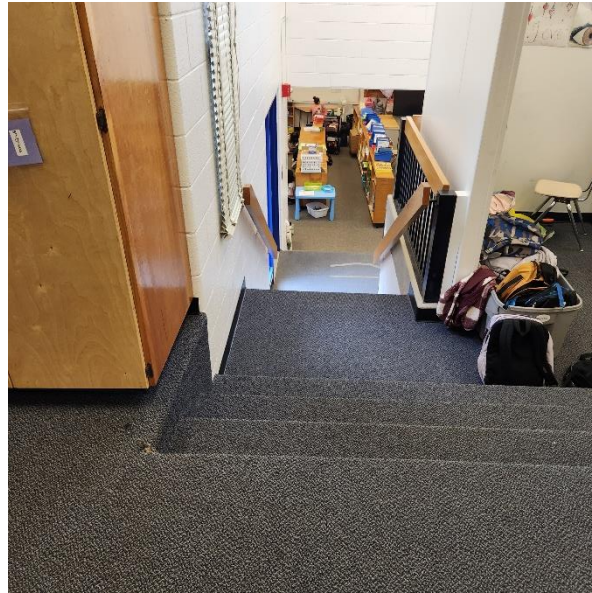
- 1972 structure by Chapman & Miller Architects
- 2013 addition by JK Architects & Associates
- Currently serving 360 students
- Connected to the community
- Community use outside of school hours



Existing Conditions

Challenges:

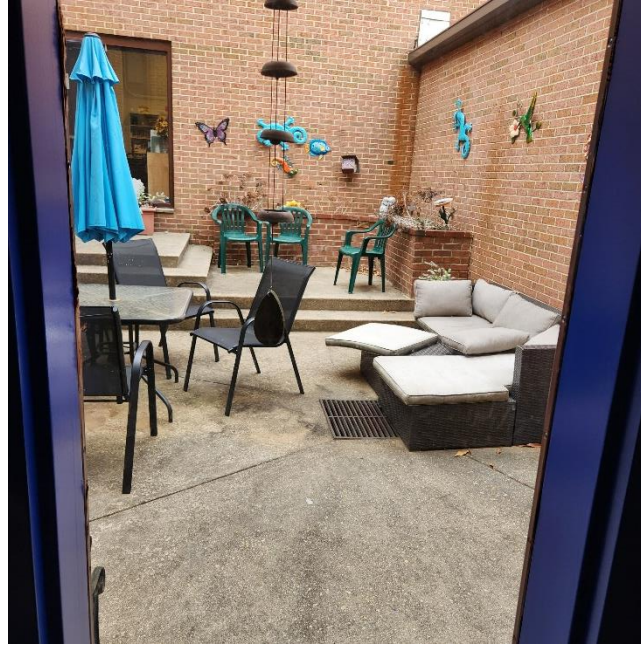
- Noise
- Privacy
- Organization & storage
- Lack of natural light
- Lack of ventilation
- Temperature control
- Accessibility



Existing Conditions & Program

Appreciative of:

- Courtyards
- Outdoor areas
- Spaces for collaboration
- Community connection



Existing Conditions & Program



Program & Ed Spec Comparison



Cold Spring Elementary School

12.38 acres

- Kindergarten (~2,970 SF)
- Standard Classrooms (~18,100 SF)
- Multipurpose space
- Music Portable
- Library Media Center
- Gym



Program & Ed Spec Comparison

Ed Spec Comparison

Existing Capacity

- 360 students

Ed Spec Capacity

- 465 SRC new (with 640 core capacity)

COLD SRING ELEMENTARY SCHOOL						
PROGRAM SPACE	Existing		Ed Spec			Difference
	Qty.	Net SF	SF per space	Qty.	Net SF	
CLASSROOMS						
Subtotal		22966 SF	23800 SF		-834	
SUPPORT ROOMS						
Subtotal		170 SF	2420 SF		-2250	
LIBRARY MEDIA CENTER						
Subtotal		1825 SF	2875 SF		-1050	
PHYSICAL EDUCATION						
Subtotal		4430 SF	4430 SF		0	
MULTIPURPOSE ROOM						
Subtotal		3910 SF	4135 SF		-225	
KITCHEN						
Subtotal		1020 SF	1372 SF		-352	

STAFF AREAS			
Subtotal	130 SF	750 SF	-620
COUNSELING SUITE			
Subtotal	0 SF	320 SF	-320
STAFF DEVELOPMENT AREA			
Subtotal	260 SF	600 SF	-340
HEALTH SERVICES SUITE			
Subtotal	160 SF	710 SF	-550
ADMINISTRATION			
Subtotal	1220 SF	1750 SF	-530
BUILDING SERVICE FACILITIES			
Subtotal	509 SF	1885 SF	-1376
BUILDING SUPPORT AREAS			
Subtotal	0 SF	600 SF	-600
TOTAL NET SQUARE FEET	36,600 SF	45,647 SF	-9047
GROSS AREA	55,158 SF	63,906 SF	-8747.8

Program & Ed Spec Comparison



Feasibility Study Process



Feasibility Study Purpose & Option Development

Purpose:

- A collaborative process that determines the best approach to the project.

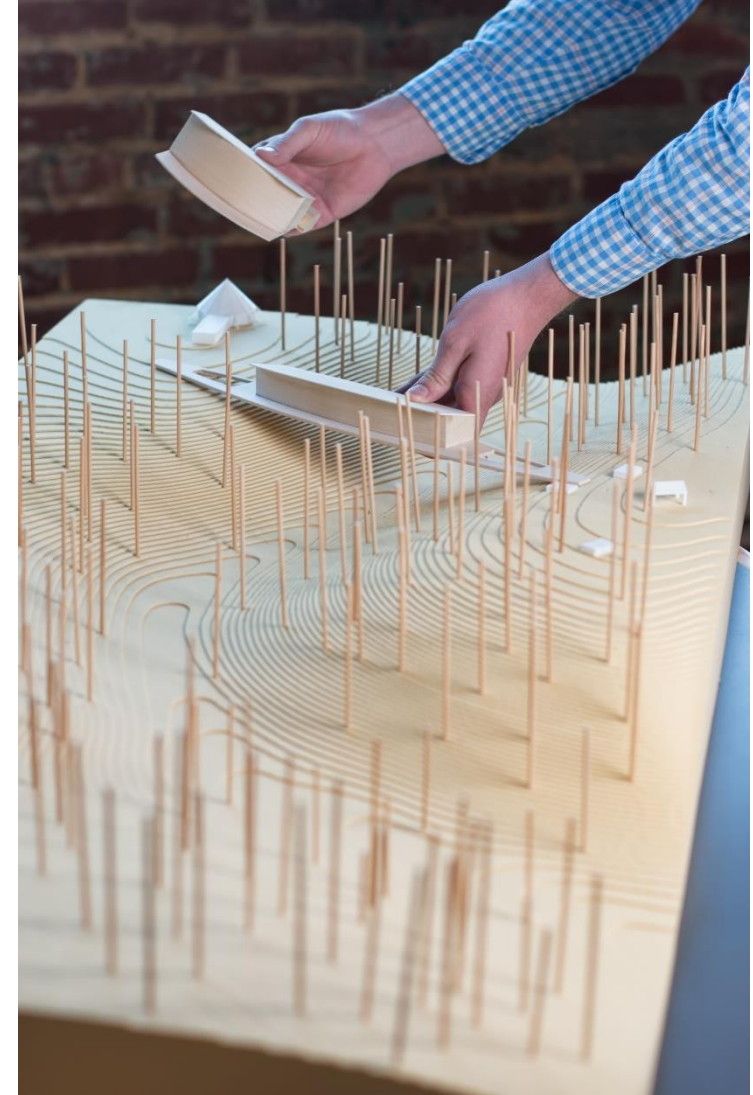
Option Development:

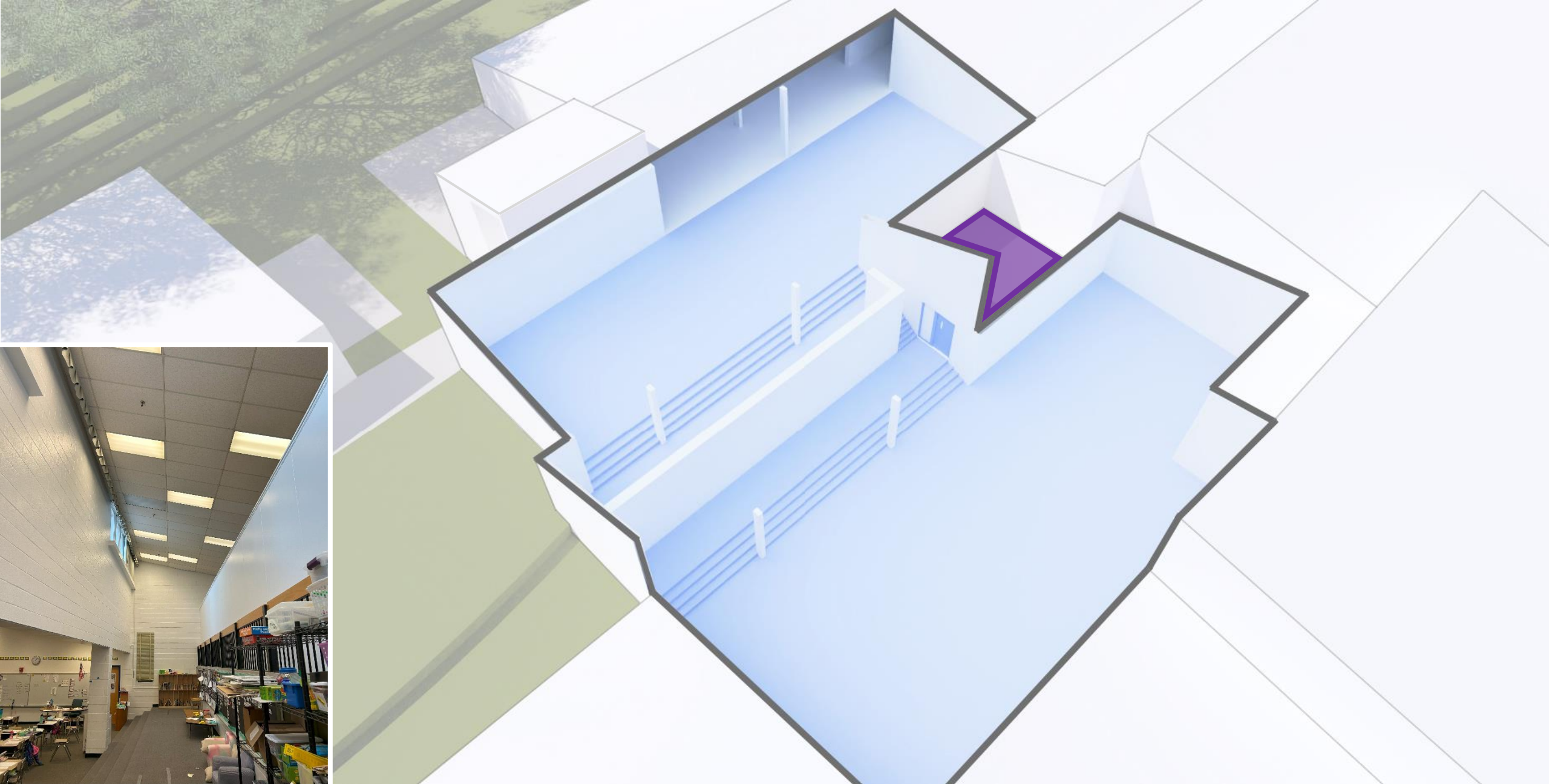
- Renewal of the existing school
- Renovation and partial demolition of the existing school with an addition or additions
- Full demolition of the existing school resulting in a new building

Further Analysis:

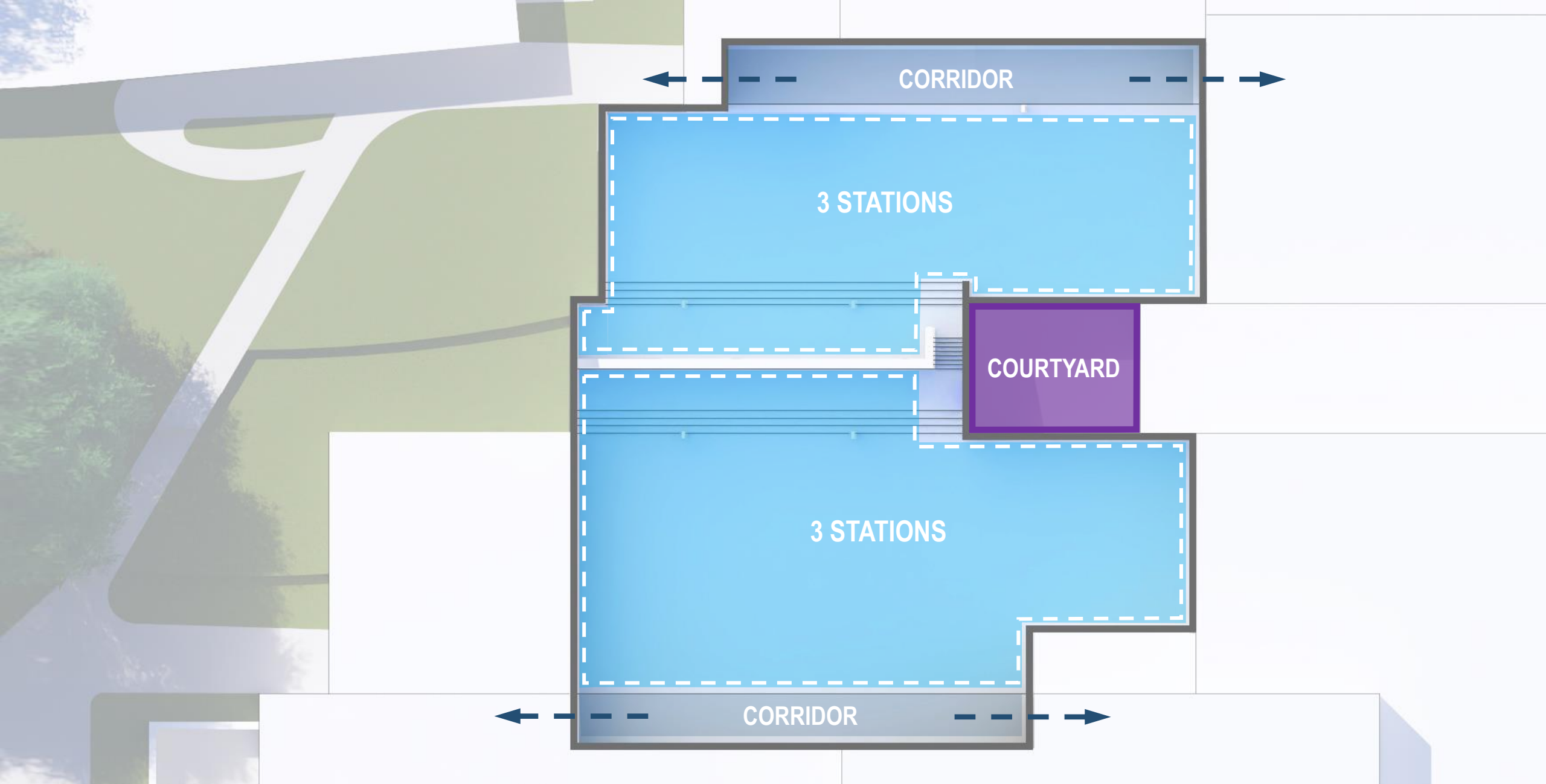
- Meeting with the school staff
- Analysis of building systems: structural, mechanical, electrical, plumbing
- Analysis of the site: stormwater management, topography
- Analysis of sustainable design goals: Green Globes

Feasibility Study Process





Feasibility Study Process - Renewal





Feasibility Study Process - Renovation & Addition



Feasibility Study Process - Replacement with Occupied Site



Feasibility Study Process - Replacement with Unoccupied Site



Community Feedback

