



Next Steps

- Collect Community Input
- Develop Approaches base on evaluation of Existing Conditions and Community Input
- **Meet Again June 3rd– at Burning Tree ES**



BURNING TREE SCHOOL 7900

FDC



Community Meeting #2
Burning Tree Elementary School - Feasibility Study
27 May 2025





Division of Design and Construction

Julie Morris

Director

Erika Dworkin

Planner

Ryan Litzinger

Project Manager

Doris Diaz

Assistant Project Manager



Point of Contact

Ryan Litzinger

Project Manager

Ryan_J_Litzinger@mcpsmd.org

240.740.7700



Design Team



Civil Engineer
Jason Azar



Mechanical Engineer
Mike Sherren



Principal-in-Charge
Robyn Toth



Structural Engineer
Nick Morabito



Electrical Engineer
Patrick Marquez



Project Manager
Lori Musican



Cost Estimator
Peter Forella



Food Service Consultant
Jay Garcia

Community Poll

BTES - Community Meeting 1 Survey

6 questions

Email *

Your email address will be shared with the survey owner.

1. Name (Short answer) *

0/200

2. Email Address (Short answer) *

3. Affiliation with Project (select all that apply) (Multiple choice) *

- ☐ Parent/Guardian
- ☐ Staff
- ☐ Community Member
- ☐ Other

4. If you selected other, what is your affiliation with the project? (Short answer)

5. What is the most critical aspect of Burning Tree Elementary School that should be improved in the new design?

(Short answer) *

0/300

6. What feature of the current Burning Tree Elementary School do you value most and hope to see carried forward in the new design?

(Short answer) *

0/300

Submit

Community Poll





Introductions

Feasibility Study

- Process
- Existing Conditions
- Space Analysis
- Community Input
- Design Considerations

Listening Session

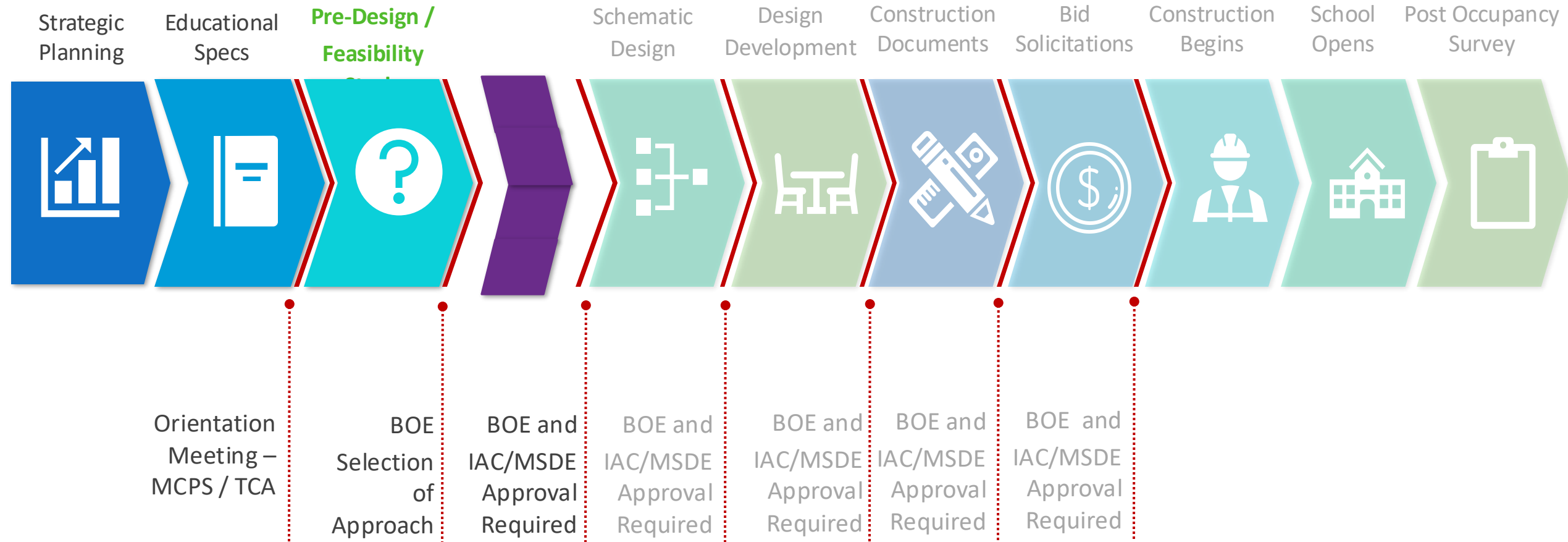


Feasibility Study





Typical Project Timeline





Feasibility Study Goal

**To determine the appropriate
Approach to a project.**

Considerations include, but are not limited to:

- **Cost / Life Cycle**
- **ADA & Code Compliance**
- **Sustainability**

NOTE: STUDY RESULT IS NOT A DESIGN



How Will We Achieve These Goals?

- **Gathering Information, Surveying Building and Evaluating Existing Conditions**
- **Developing Approach Concepts**
- **Developing Approach Plans**
- **Submitting Final Report to BOE and State (IAC/MSDE)**

NOTE: STUDY RESULT IS NOT A DESIGN



Community Engagement

Communicate - with Principal, PTA, and MCPS to determine and coordinate the best methods of communication for this project.

Interact - During virtual community meetings using polling and Zoom chat.

Survey - Community at large for quantitative research.

Interview - Key stakeholders for qualitative research.

Listen - To all community members and make sure they feel heard
- use interpreters.

Encourage - involvement from all stakeholders (students, staff, community, etc.)



Community Engagement



Feasibility Study Schedule



~~Community Meeting No. 1~~

~~May 20 – 6:00 PM~~

Community Meeting No.2
Virtual

May 27 – 6:00 PM

Community Meeting No.3
at Burning Tree ES

June 3 – 6:00 PM

Presentation to PTA

Sept 9 - 6:00 PM

Presentation to Board

TBD



Existing Conditions



tca
architects



S I T E

Beech Tree Park





Community Input



tca
architects

Community Poll

BTES - Community Meeting 1 Survey

6 questions

Email *

Your email address will be shared with the survey owner.

1. Name (Short answer) *

0/200

2. Email Address (Short answer) *

3. Affiliation with Project (select all that apply) (Multiple choice) *

- ☐ Parent/Guardian
- ☐ Staff
- ☐ Community Member
- ☐ Other

4. If you selected other, what is your affiliation with the project? (Short answer)

5. What is the most critical aspect of Burning Tree Elementary School that should be improved in the new design?

(Short answer) *

0/300

6. What feature of the current Burning Tree Elementary School do you value most and hope to see carried forward in the new design?

(Short answer) *

0/300

Submit

Community Poll





Community Input

What is the
most critical aspect
Burning Tree Elementary School
that should be improved
in the new design?



Needed Improvements

- **“School MUST be ADA compliant and better accountability for special education students and places to support behaviors”**
- **“Safe drinking water fountains” – “Access to safe and clean water (replace old pipelines with lead)”**
- **“Building expansion” – “Having enough space for the students going forward” – “No more portable classrooms!”**
- **‘Dedicated kids and ride route for drop off and pick up’ – “No car pick up loop”**
- **“Better climate control”**
- **“Space for school gatherings and events” – Gym, Cafeteria, Outdoor space, Yard space.**
- **“The safety of staff and students is priority with having enough space for all students to have a positive educational experience including equal access to all areas of the building.” – “Fenced in campus”**
- **“Bathrooms for younger students, less mold/roaches, and windows in offices that do not have them.”**
- **“The bi-level design is horrible”**



Community Input

What feature
of the current
of Burning Tree Elementary School
do you value most
and hope to see carried forward
in the new design?



Existing Valued Features

- **“Kid-friendly community feel - I would like to keep the size small. The school is a wonderful community.”**
- **“Lots of outdoor blacktop space”**
- **“The main playground” - The separate kindergarten playground”**
- **“Special sentimental features, like artwork for gym teacher and central frog at entrance.”**
- **“Green spaces around the school”**
- **“Community spaces”**
- **“I want to culture to be carried forward.”**
- **“None”**



Feasibility Study

Approach 1

- Renewal

Approach 2

- ADA Upgrades & Lighting Renovations

Approach 3

- Major Renovations & Addition

Approach 4

- New Replacement School



Approach 1 – Project Goals

Renewal

Work Collaboratively with all Stakeholders to:

1. Provide new finishes throughout.
2. Provide new exterior doors and windows.
3. Update Mechanical, Electrical and Plumbing systems.
4. Provide new chiller, boiler and generator.
5. Install new roof.



Approach

1

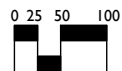
Renewal



Site Plan

Burning Tree ES

27 May 2025



Parking Tabulations

Standard Parking Spaces	68
HC Parking Spaces	7
Total Parking Spaces	75



Approach 1 - Site Notes:

Existing elementary school site is ± 6.8 Acres.

Minimal site work would be performed for this approach to support new mechanical, electrical and plumbing systems.



DOMESTIC WATER PIPING

- Original from 1958 or 1991 are nearing or have exceeded their useful life.
- Lead found in water since 2019



SANITARY PIPING

- Original from 1958 or 1991 are nearing or have exceeded their useful life.



PLUMBING FIXTURE

- Most of the plumbing fixtures are not ADA compliant.



GYMNASIUM

- Existing metal halide lights from 2007 lights to be replaced with LED lighting



EXTERIOR LIGHTING

- Existing metal halide lights to be replaced with LED lighting

KITCHEN



WORK AREA

- No ventilation hood
- Convection oven is worn out.
- Not many worktables to prep food.



WALK-IN FREEZER / COOLER

- Boxes are old and need to be replaced.
- Light fixtures are missing.



DISHWASHING

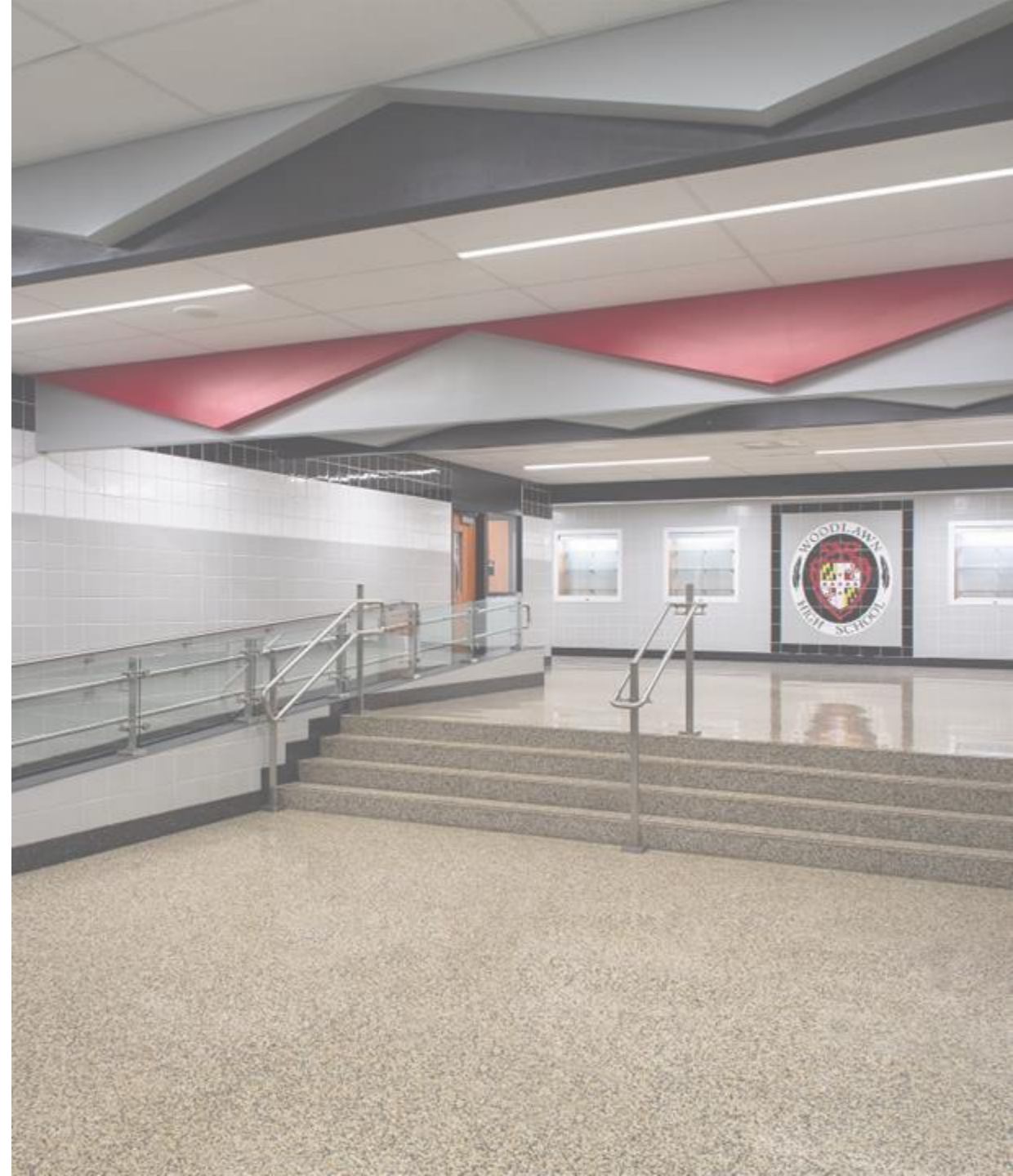
- Original three-compartment sink needs to be replaced.

Approach 2 – Project Goals

ADA Upgrades & Light Renovations

Work Collaboratively with all Stakeholders to:

1. Add handrails to ramp at corridor near kindergarten classrooms for code compliance.
2. Provide accessible route to platform.
3. Reconfigure Main Office to provide accessibility.
4. Ensure Health Suite is accessible.
5. Provide ADA access to all spaces with small addition to improve circulation.
6. Provide accessible routes to building entry points.
7. Provide separation between bus and car circulation.



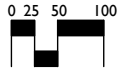
Approach 2

ADA Upgrades
and Light Renovations



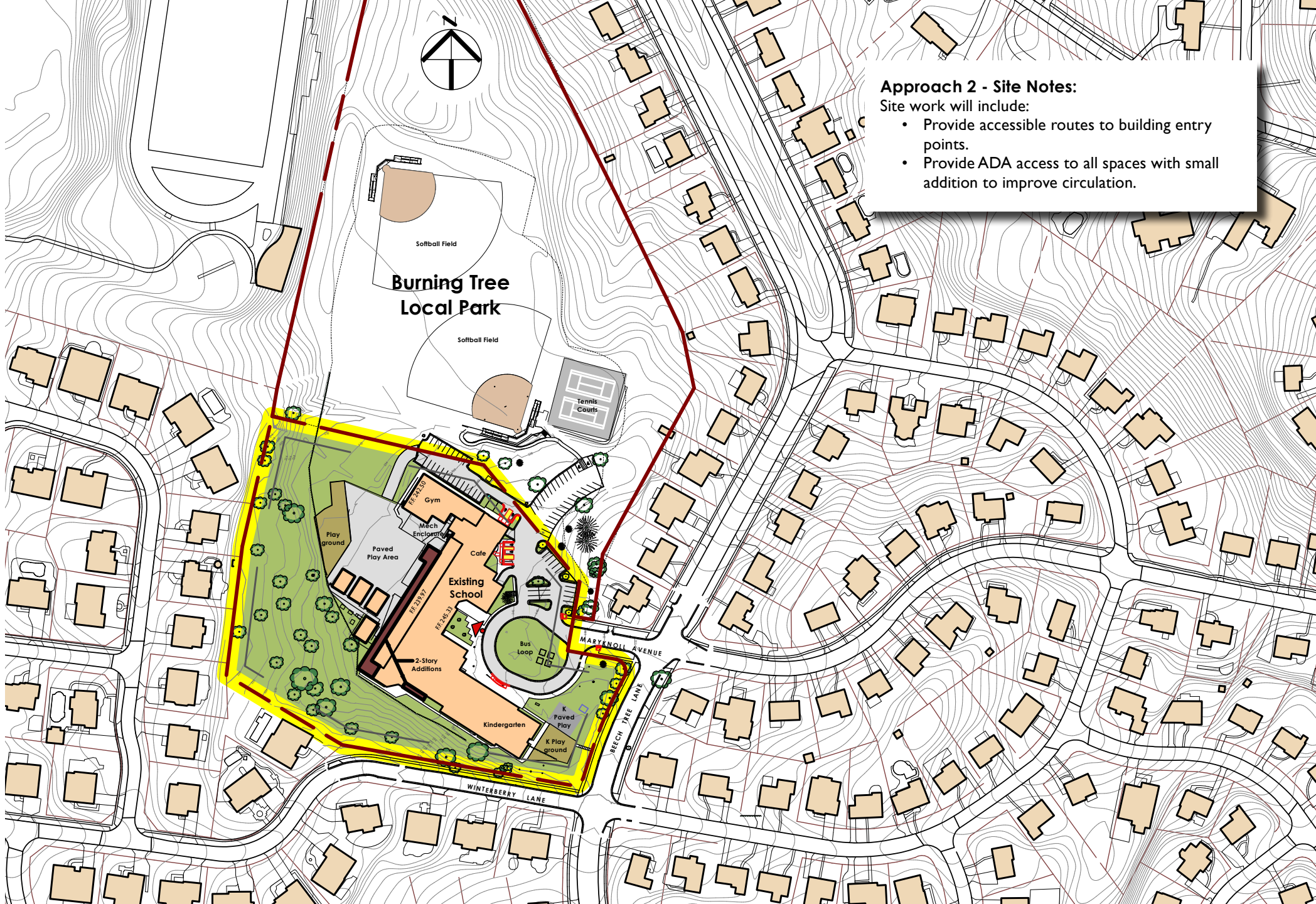
Site Plan

Burning Tree ES
27 May 2025



Parking Tabulations

Standard Parking Spaces	68
HC Parking Spaces	7
Total Parking Spaces	75



Approach 2 - Site Notes:

Site work will include:

- Provide accessible routes to building entry points.
- Provide ADA access to all spaces with small addition to improve circulation.



CLASSROOMS

- Students and staff access classrooms through stairwells.



STAGE

- The stage does not have a ramp for access.



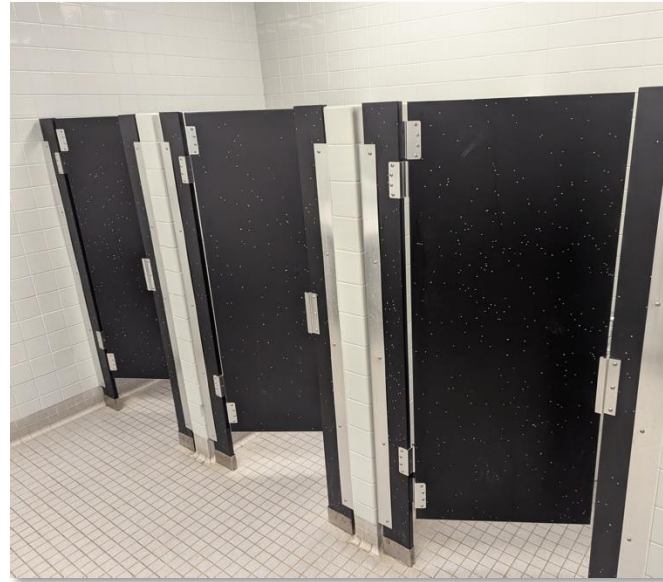
ROOM SIGNAGE

- All signage throughout the building are missing braille patterns and have a fair bit of wear and tear.



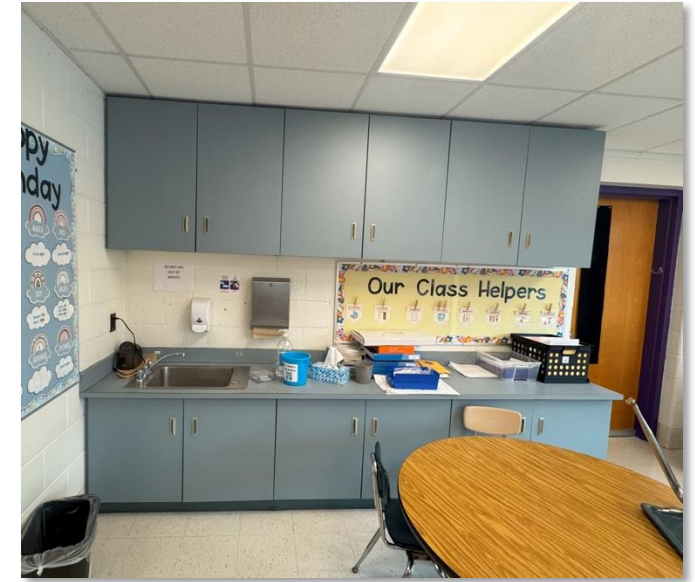
DOOR CLOSERS

- Must meet the requirement of not exceeding 5 pounds per square inch of pull for ADA requirements



TOILET ROOMS

- In some of the larger toilet rooms, there are no ADA accessible stalls.



CLASSROOM SINKS

- The sinks found within the classrooms are not ADA compliant as the constraints for a sideways approach is not met.

Approach 3 – Project Goals

Major Renovations and Addition

Work Collaboratively with all Stakeholders to:

1. Increase building by approximately 18,000 sf to meet Ed Spec.
2. Remove Relocatables.
3. Provide accessible routes to building entry points
4. Provide separation between bus and car circulation
5. Provide new chiller, boiler and generator.
6. Install new roof.
7. Provide new finishes throughout.
8. Provide new exterior doors and windows.
9. Update Mechanical, Electrical and Plumbing systems.
10. Provide ADA accessibility throughout school.

Gross Area Grand Total Summary		ED Spec	Existing Burning Tree	Existing Burning Tree
		BCPS Elementary School	Comparison to Ed Spec	School
Total Net Sq. Ft. Gross Area Factor (Walls, Circulation, Toilets, Mech/Elec. Struct, Streets)	Efficiency Factor %	56,277 24,119	11,809 6,359	44,468 23,651
		70%	65%	65%
	Gross Area Grand Total	80,396	18,168	68,119



Approach

3a

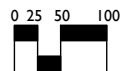
Renewal



Site Plan

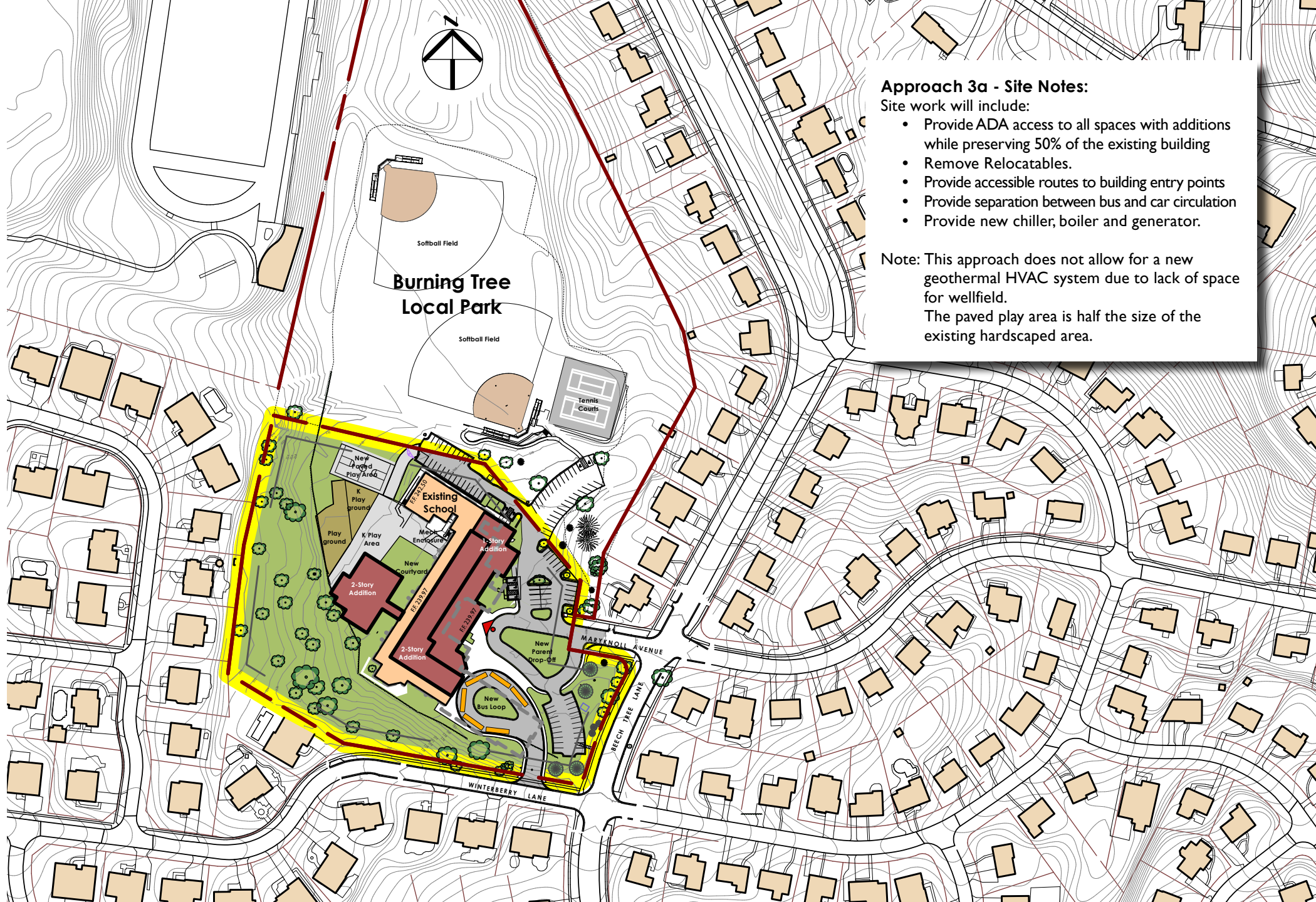
Burning Tree ES

27 May 2025



Parking Tabulations

Standard Parking Spaces	94
HC Parking Spaces	7
Total Parking Spaces	101



Approach 3a - Site Notes:

Site work will include:

- Provide ADA access to all spaces with additions while preserving 50% of the existing building
- Remove Relocatables.
- Provide accessible routes to building entry points
- Provide separation between bus and car circulation
- Provide new chiller, boiler and generator.

Note: This approach does not allow for a new geothermal HVAC system due to lack of space for wellfield.

The paved play area is half the size of the existing hardscaped area.

Approach

3b

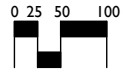
Renewal



Site Plan

Burning Tree ES

27 May 2025

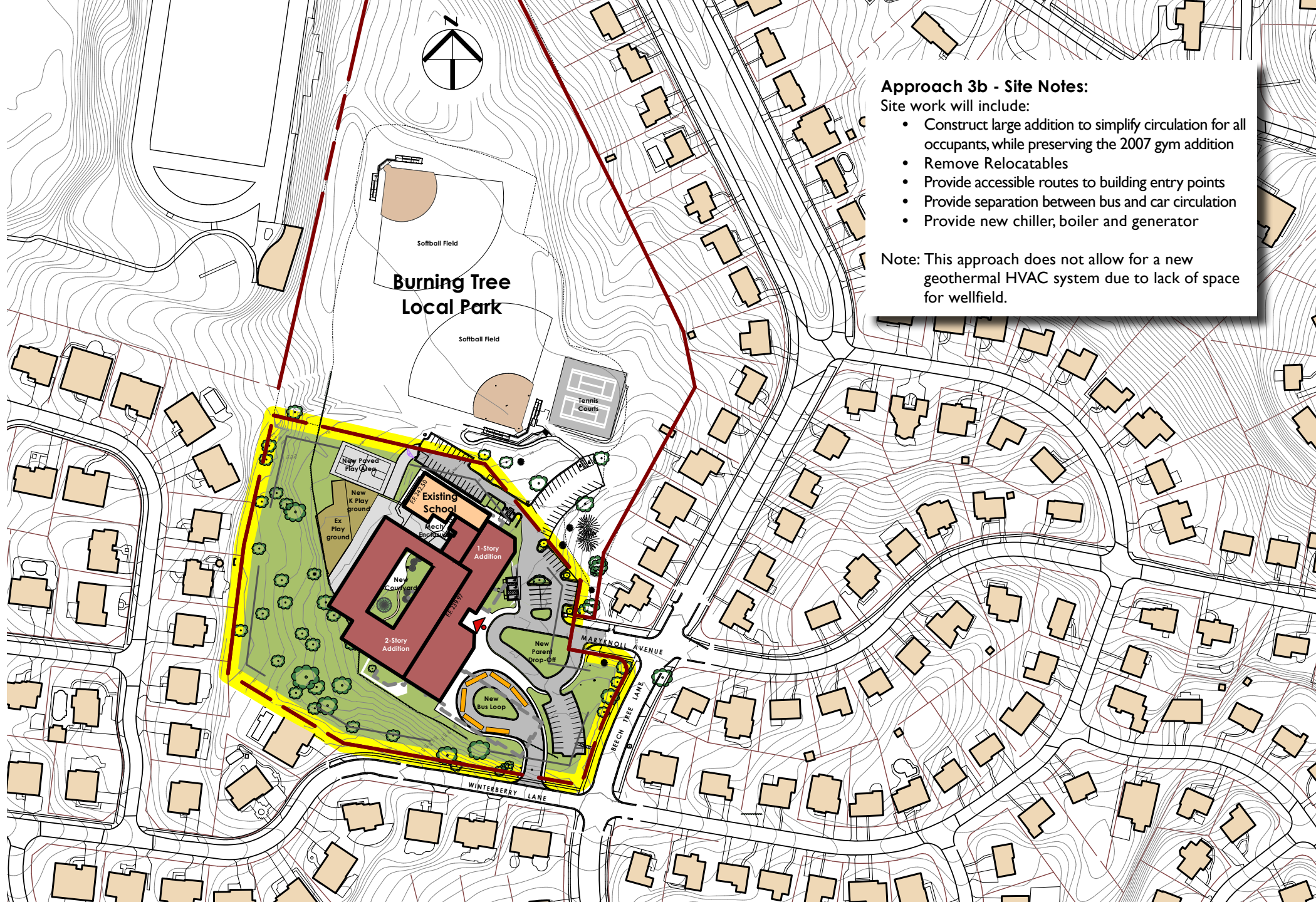


Parking Tabulations

Standard Parking Spaces 94

HC Parking Spaces 7

Total Parking Spaces 101



Approach 3b - Site Notes:

Site work will include:

- Construct large addition to simplify circulation for all occupants, while preserving the 2007 gym addition
- Remove Relocatables
- Provide accessible routes to building entry points
- Provide separation between bus and car circulation
- Provide new chiller, boiler and generator

Note: This approach does not allow for a new geothermal HVAC system due to lack of space for wellfield.

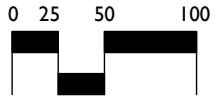
Approach 3b

Major Renovations and Additions



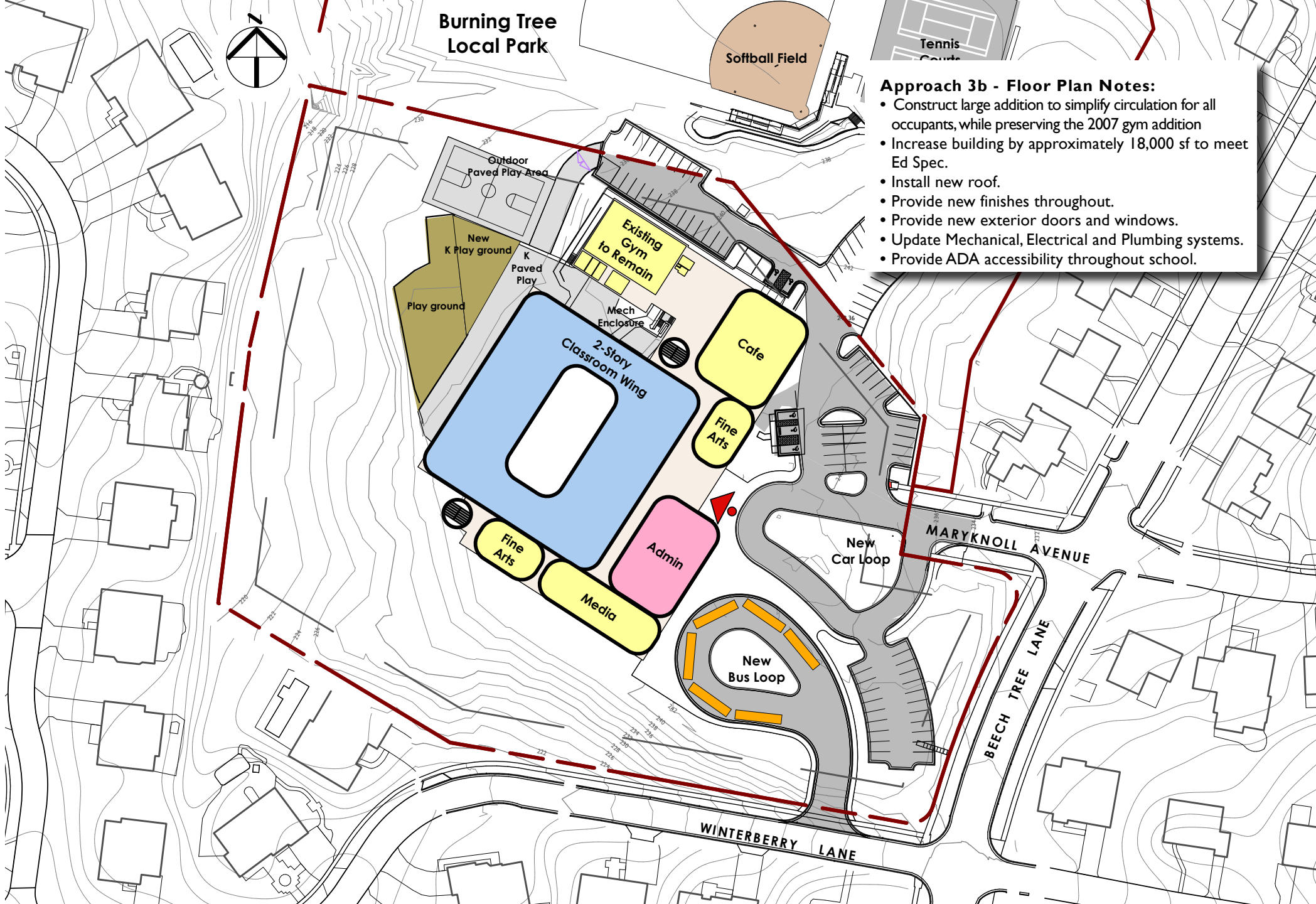
Floor Plan

Burning Tree ES
27 May 2025



Gross Square Footage

Existing Building	68,119 gsf
Area of Demolition	- 60,850 gsf
Area of Addition	± 79,050 gsf
Total Area of Building	± 86,319 gsf



Approach 3b - Floor Plan Notes:

- Construct large addition to simplify circulation for all occupants, while preserving the 2007 gym addition
- Increase building by approximately 18,000 sf to meet Ed Spec.
- Install new roof.
- Provide new finishes throughout.
- Provide new exterior doors and windows.
- Update Mechanical, Electrical and Plumbing systems.
- Provide ADA accessibility throughout school.

Comparison of Approach 3

a



b



Approach 4 – Project Goals

Replacement School

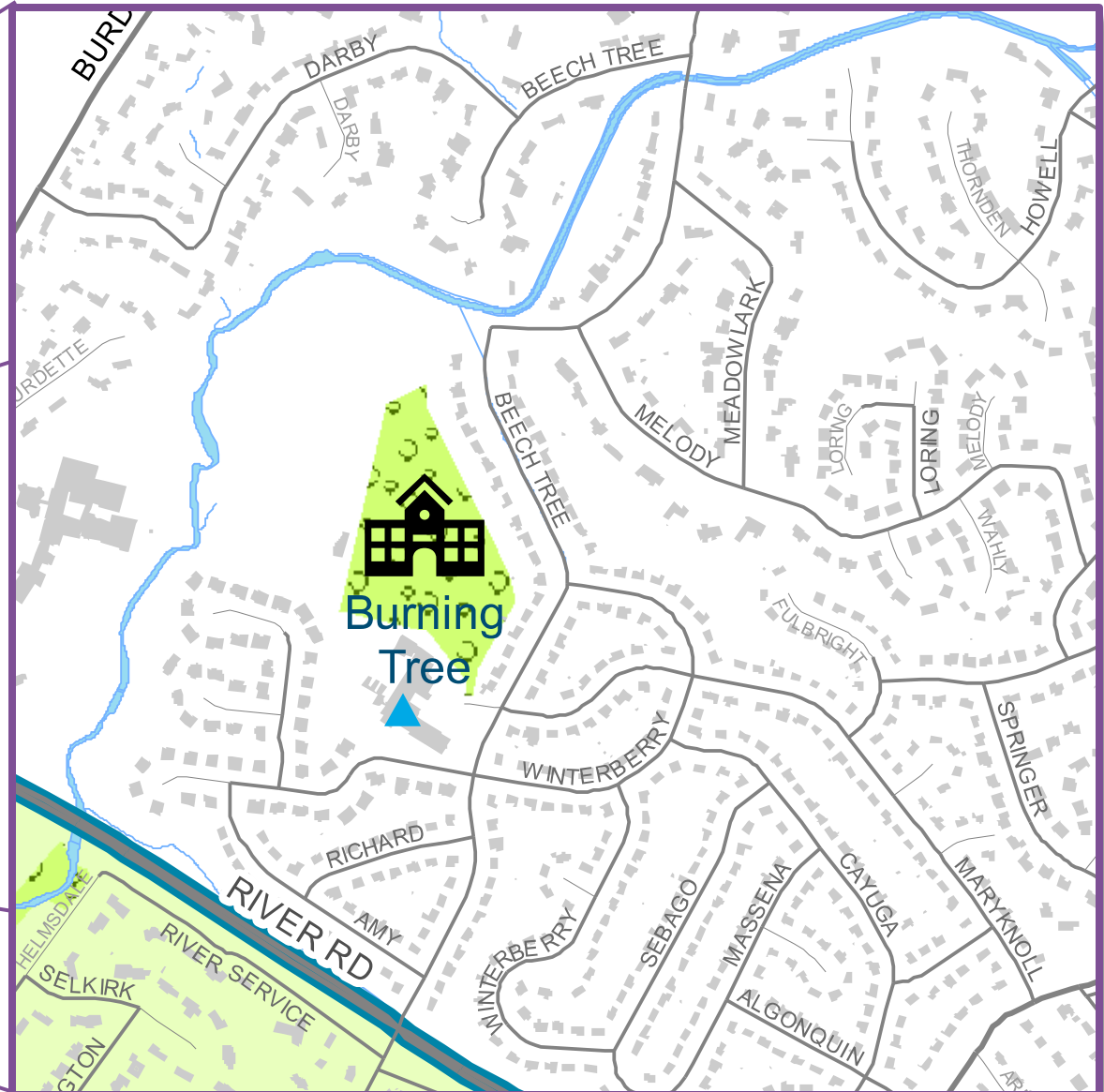
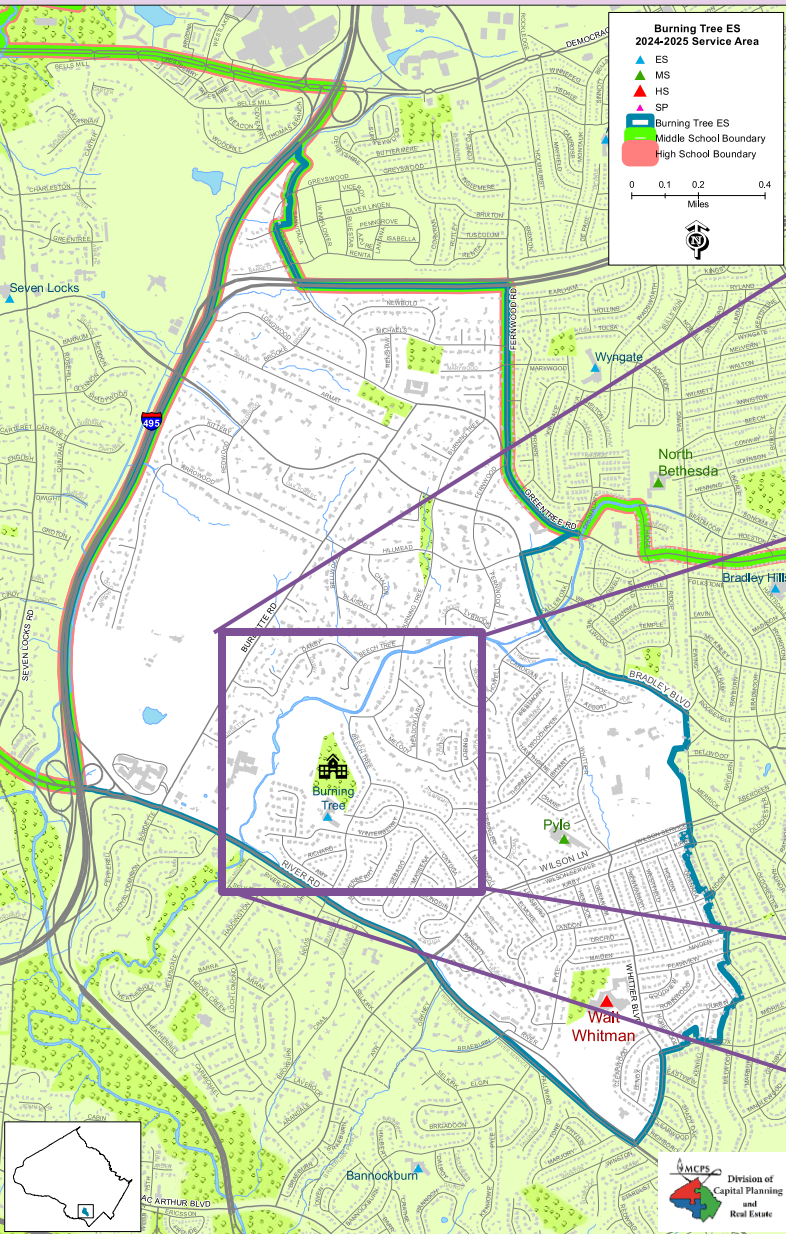
Work Collaboratively with all Stakeholders to:

- Provide a new building to blend with neighborhood
- Provide separation between bus and car circulation
- Compliant to current codes and standards
- High Performance School, with new HVAC
- Energy Efficient Building Envelope
- Prioritize Daylighting and Views
- Use CPTED strategies for safe and secure school
- Sustainable Certification
- Compact Footprint to reduce limit of disturbance
- Create a Celebrated Entry
- Support collaboration
- Improve acoustical design





Service Area Map





Existing Traffic Pattern



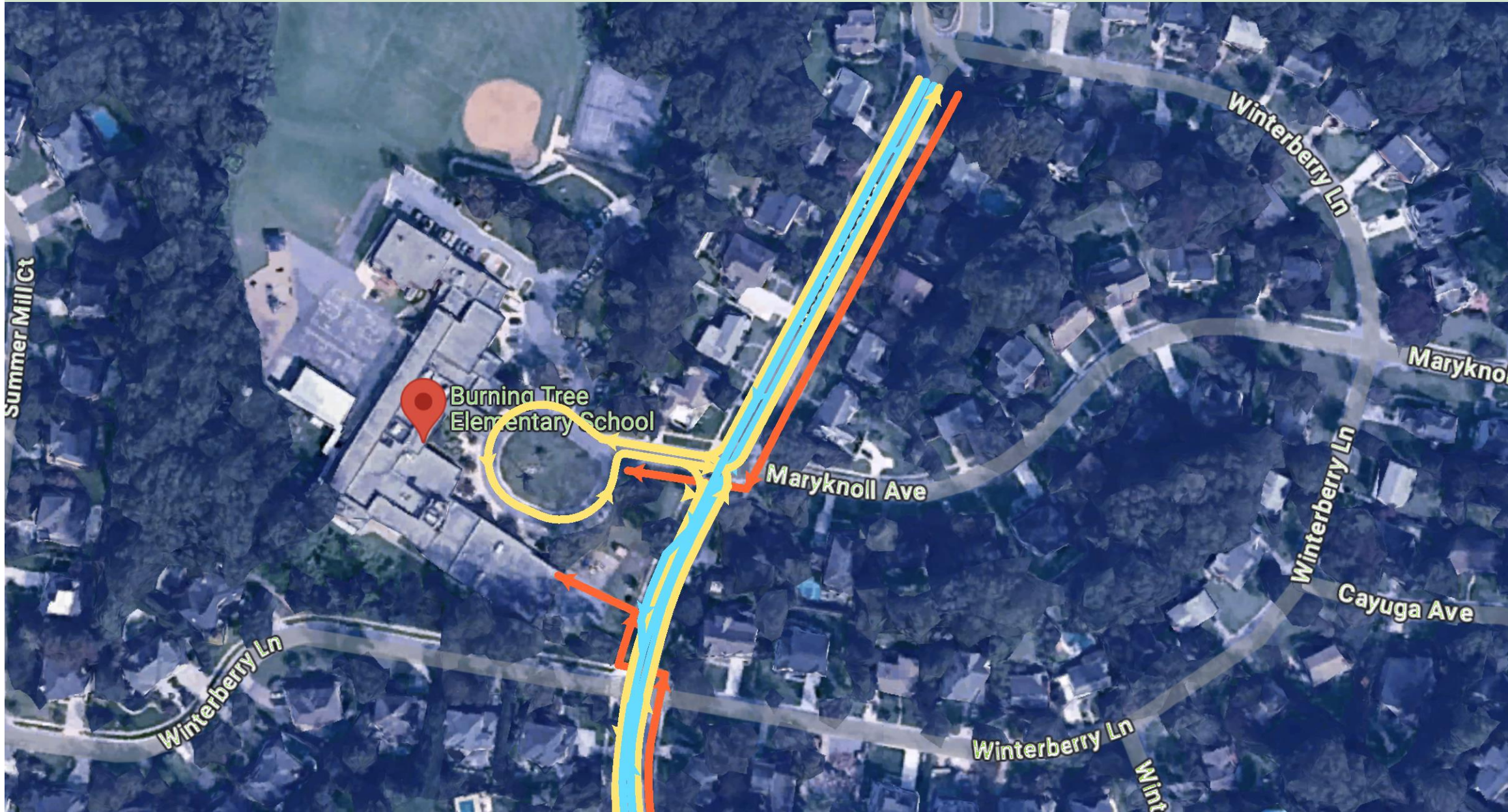
Cars



Pedestrians



Buses





Cars



Pedestrians



Buses





Proposed Traffic Pattern



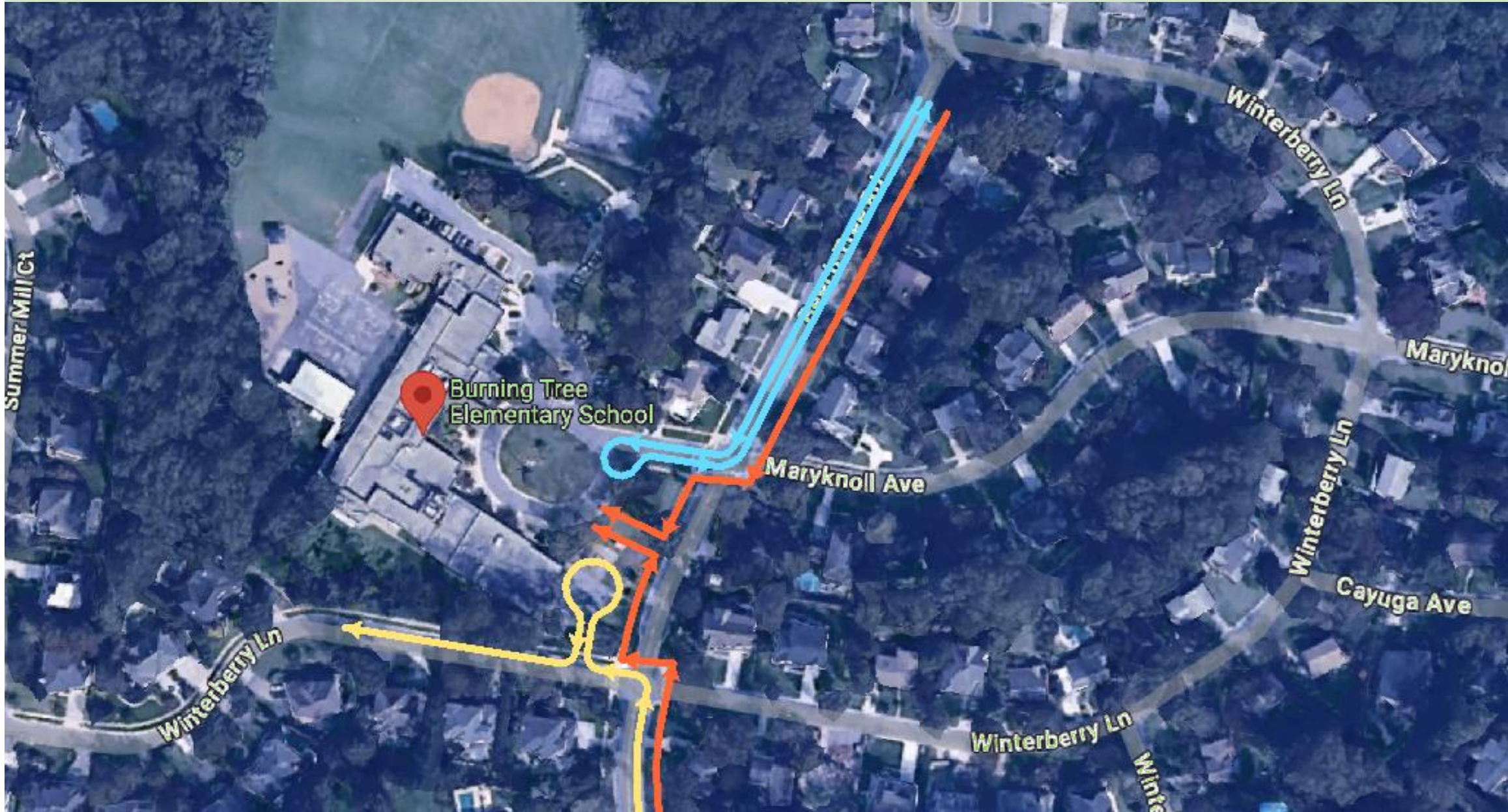
Cars



Pedestrians



Buses





Cars



Pedestrians



Buses



Burning Tree
Elementary School

Maryknoll A



Approach

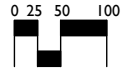
4a

New Replacement School



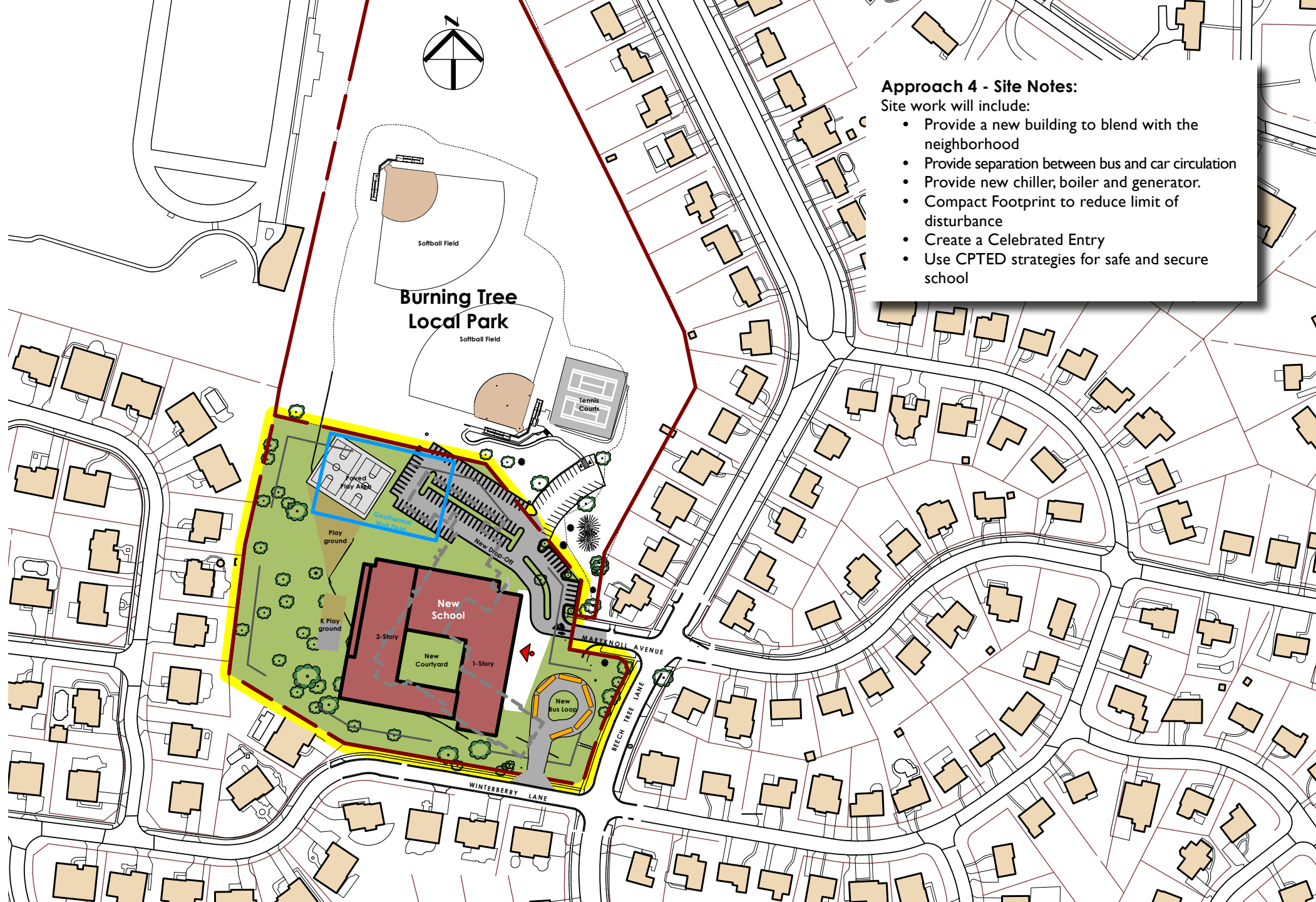
Site Plan

Burning Tree ES
27 May 2025



Parking Tabulations

Standard Parking Spaces	122
HC Parking Spaces	6
Total Parking Spaces	128



Approach 4 - Site Notes:

Site work will include:

- Provide a new building to blend with the neighborhood
- Provide separation between bus and car circulation
- Provide new chiller, boiler and generator.
- Compact Footprint to reduce limit of disturbance
- Create a Celebrated Entry
- Use CPTED strategies for safe and secure school

Approach

4a

New
Replacement School



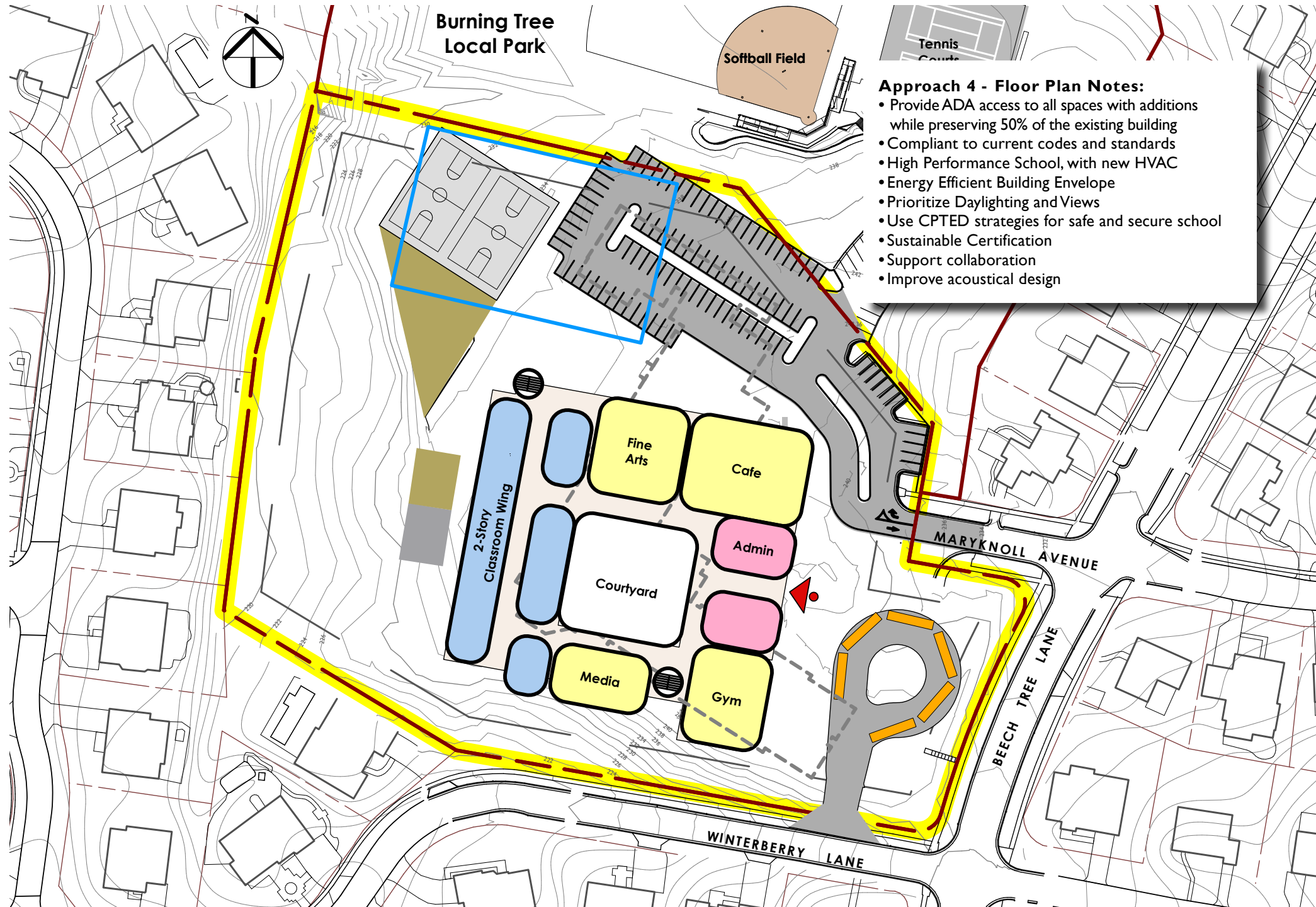
Floor Plan

Burning Tree ES
27 May 2025



Gross Square Footage

Existing Building	68,119 gsf
Area of Demolition	- 68,119 gsf
Area of Addition	± 80,396 gsf
Total Area of Building	± 80,396 gsf



Approach 4 - Floor Plan Notes:

- Provide ADA access to all spaces with additions while preserving 50% of the existing building
- Compliant to current codes and standards
- High Performance School, with new HVAC
- Energy Efficient Building Envelope
- Prioritize Daylighting and Views
- Use CPTED strategies for safe and secure school
- Sustainable Certification
- Support collaboration
- Improve acoustical design

Approach

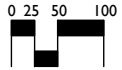
4b

New Replacement School



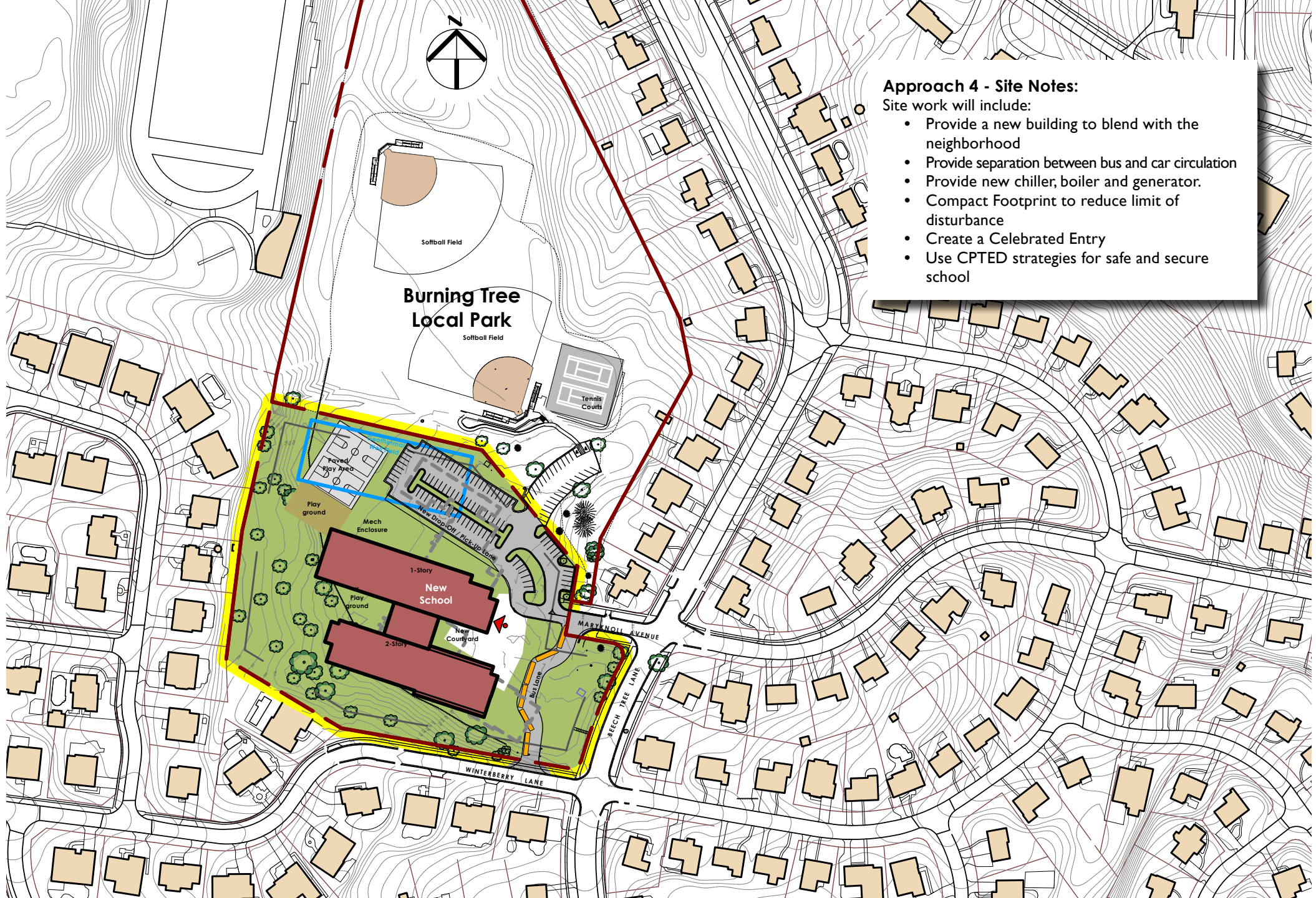
Site Plan

Burning Tree ES
27 May 2025



Parking Tabulations

Standard Parking Spaces	114
HC Parking Spaces	6
Total Parking Spaces	120



Approach 4 - Site Notes:

Site work will include:

- Provide a new building to blend with the neighborhood
- Provide separation between bus and car circulation
- Provide new chiller, boiler and generator.
- Compact Footprint to reduce limit of disturbance
- Create a Celebrated Entry
- Use CPTED strategies for safe and secure school

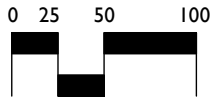
Approach 4b

New
Replacement School



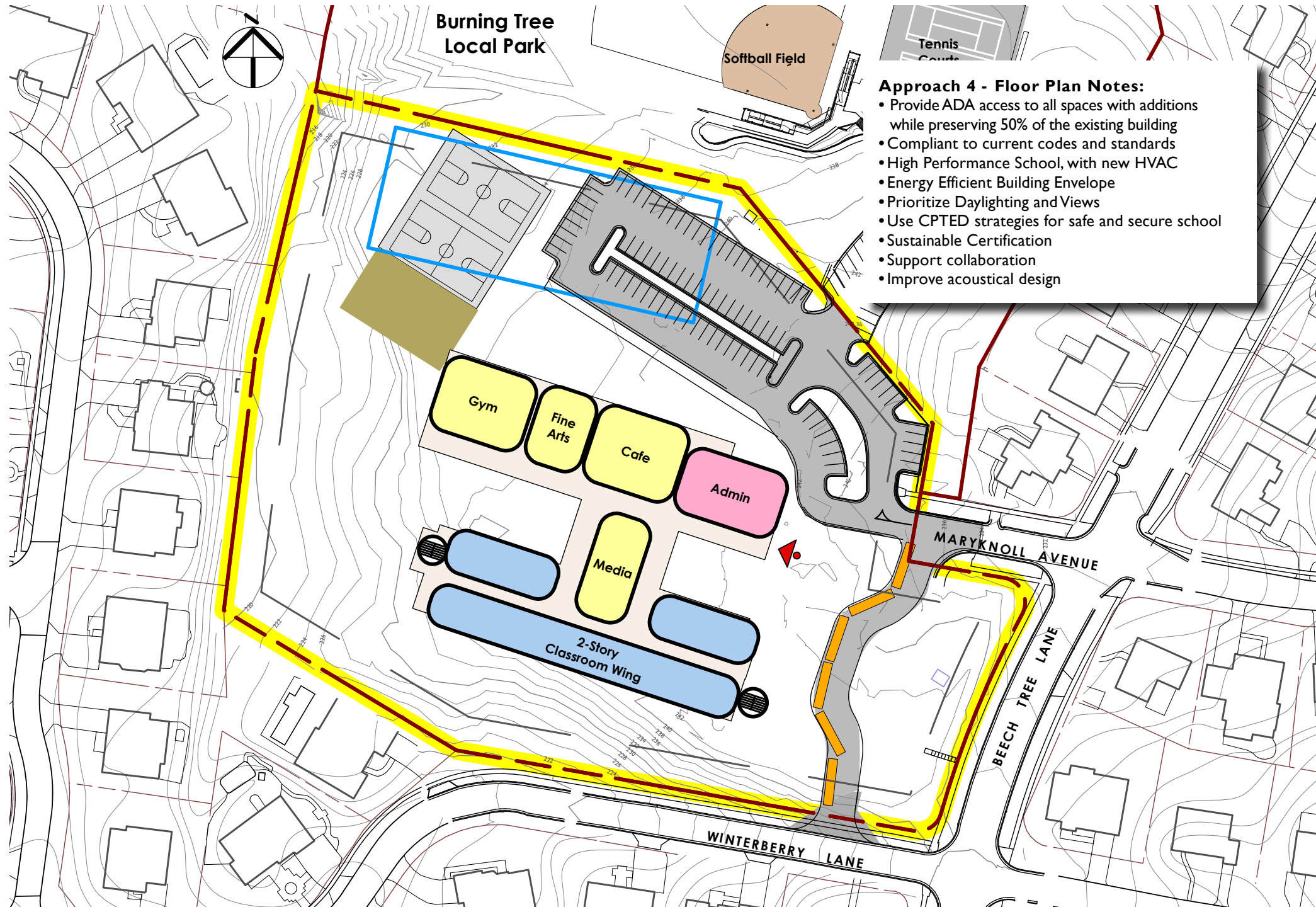
Floor Plan

Burning Tree ES
27 May 2025



Gross Square Footage

Existing Building	68,119 gsf
Area of Demolition	- 68,119 gsf
Area of Addition	± 80,396 gsf
Total Area of Building	± 80,396 gsf



Approach 4 - Floor Plan Notes:

- Provide ADA access to all spaces with additions while preserving 50% of the existing building
- Compliant to current codes and standards
- High Performance School, with new HVAC
- Energy Efficient Building Envelope
- Prioritize Daylighting and Views
- Use CPTED strategies for safe and secure school
- Sustainable Certification
- Support collaboration
- Improve acoustical design

Approach

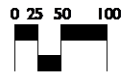
4c

New Replacement School



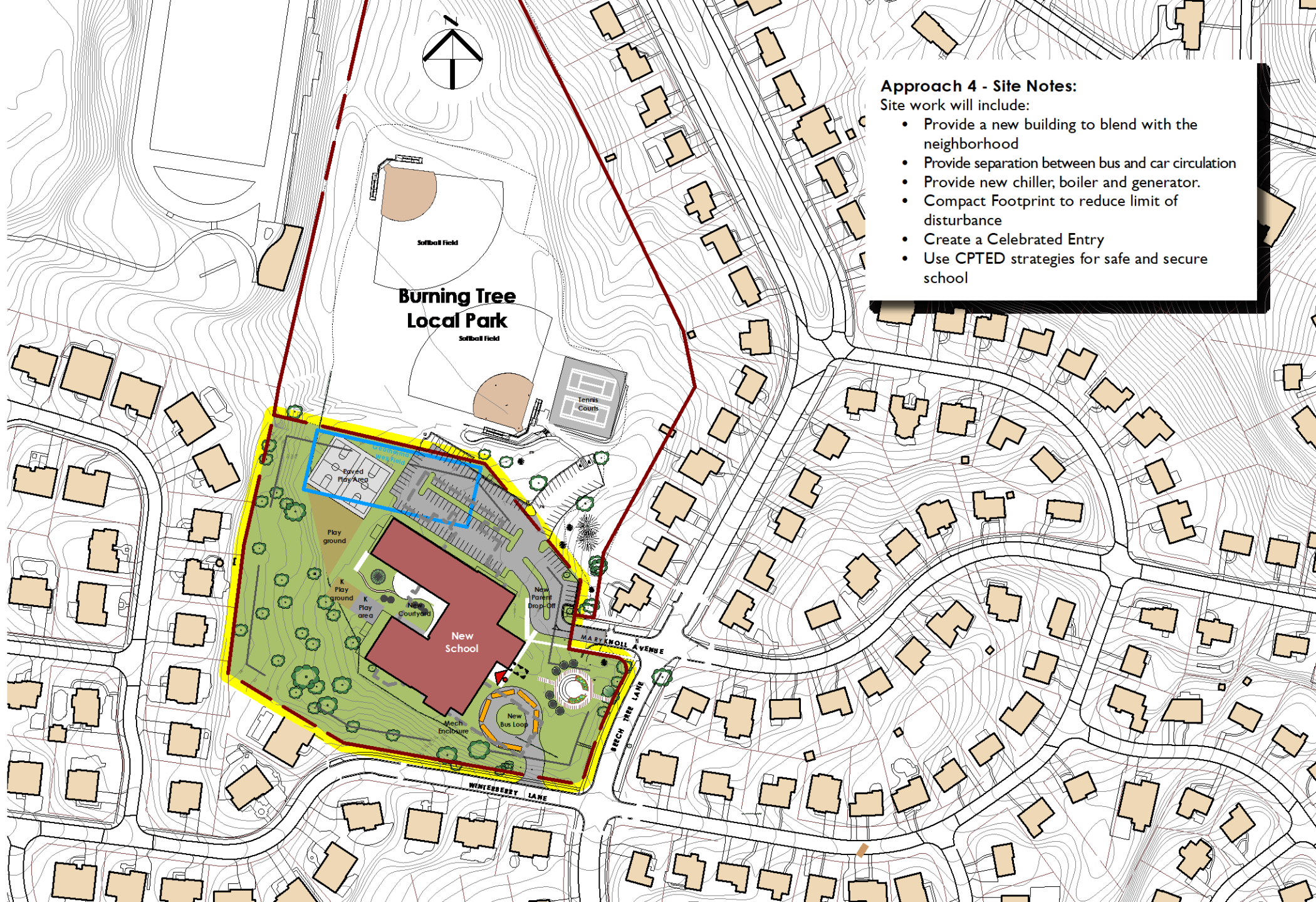
Site Plan

Burning Tree ES
27 May 2025



Parking Tabulations

Standard Parking Spaces	135
HC Parking Spaces	6
Total Parking Spaces	141



Approach 4 - Site Notes:

Site work will include:

- Provide a new building to blend with the neighborhood
- Provide separation between bus and car circulation
- Provide new chiller, boiler and generator.
- Compact Footprint to reduce limit of disturbance
- Create a Celebrated Entry
- Use CPTED strategies for safe and secure school

Approach

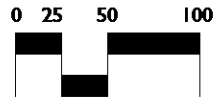
4c

New
Replacement School



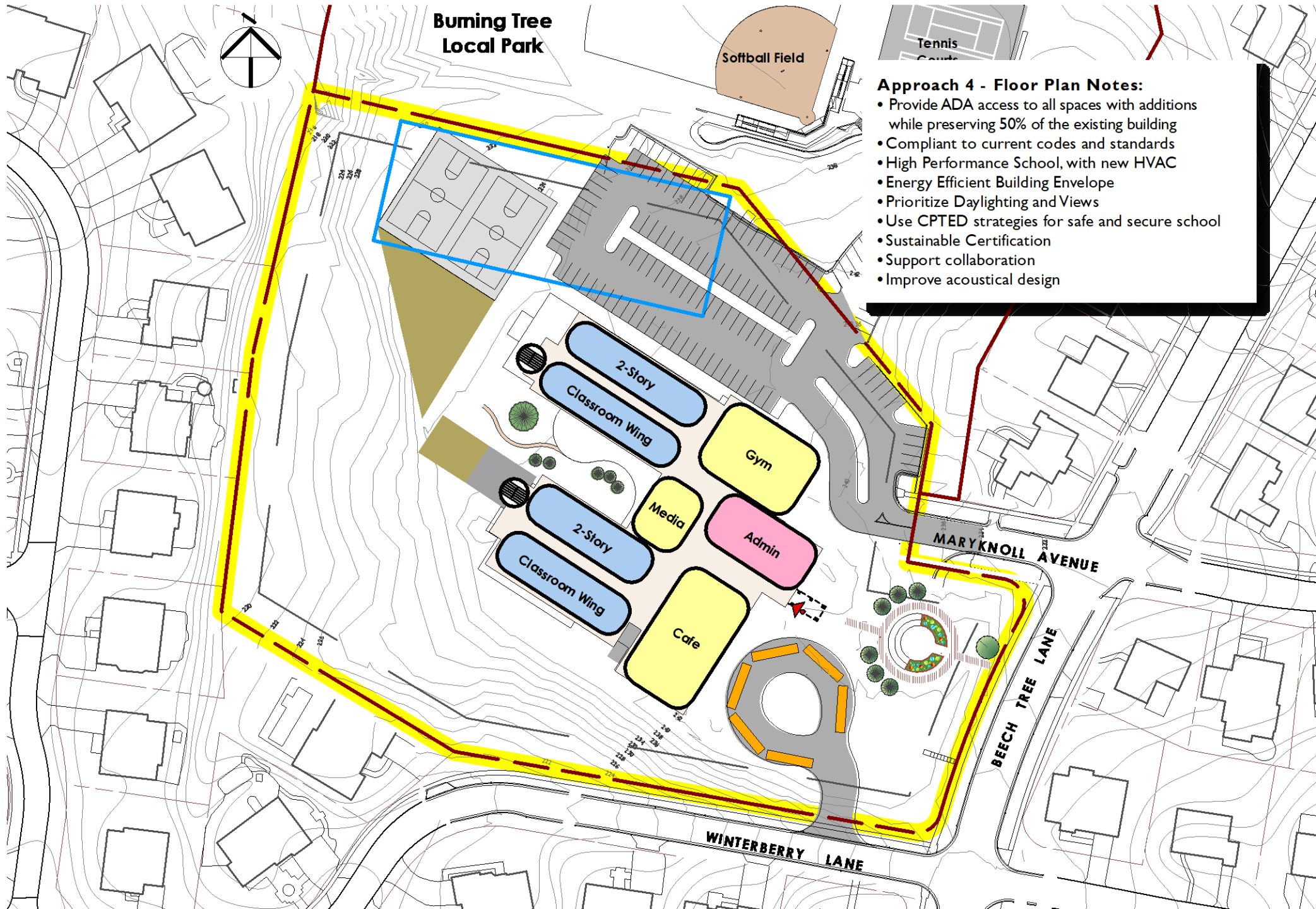
Floor Plan

Burning Tree ES
27 May 2025



Gross Square Footage

Existing Building	68,119 gsf
Area of Demolition	- 68,119 gsf
Area of Addition	± 80,396 gsf
Total Area of Building	± 80,396 gsf



Approach 4 - Floor Plan Notes:

- Provide ADA access to all spaces with additions while preserving 50% of the existing building
- Compliant to current codes and standards
- High Performance School, with new HVAC
- Energy Efficient Building Envelope
- Prioritize Daylighting and Views
- Use CPTED strategies for safe and secure school
- Sustainable Certification
- Support collaboration
- Improve acoustical design

Approach

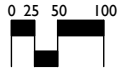
4d

New
Replacement School



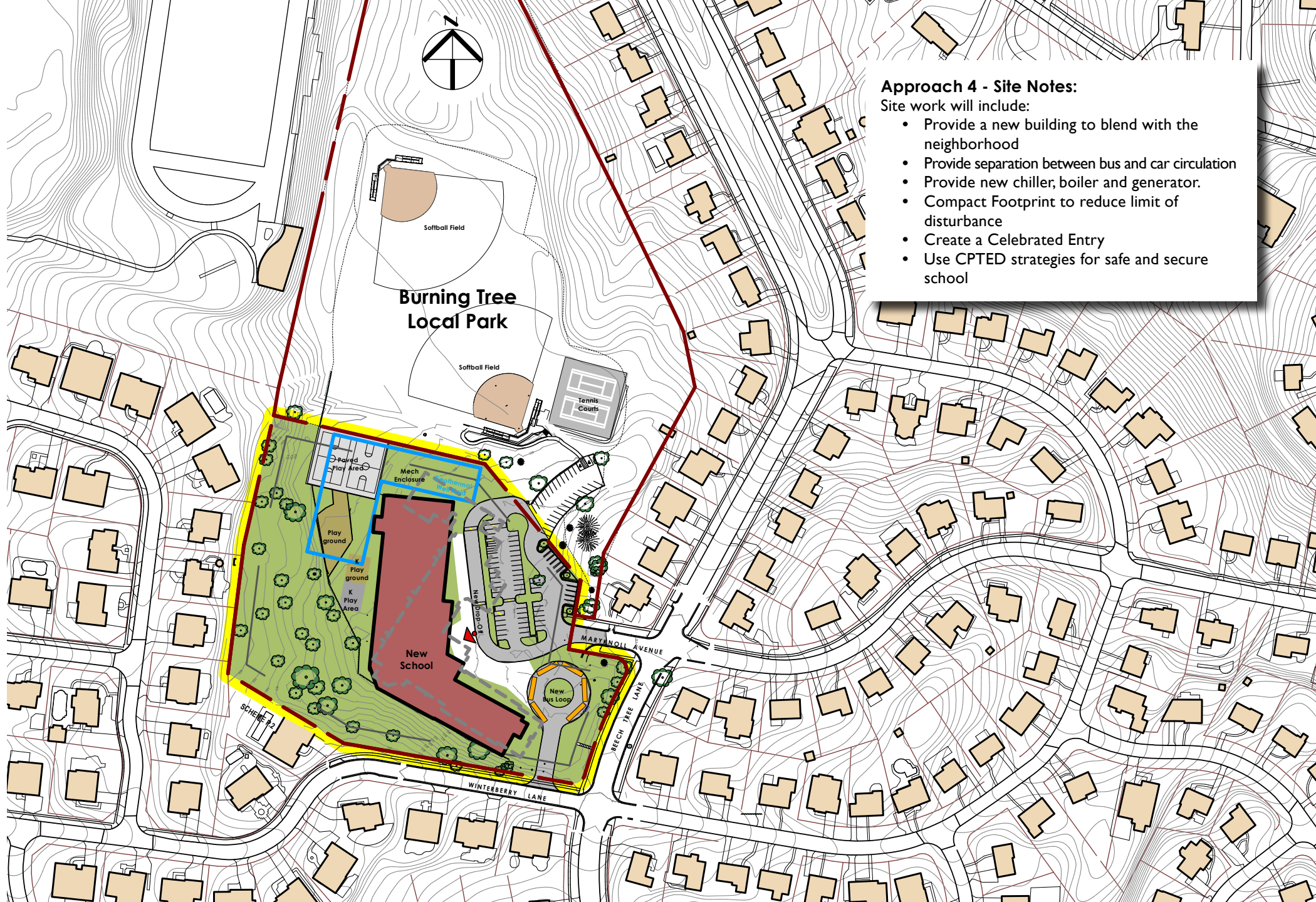
Site Plan

Burning Tree ES
27 May 2025



Parking Tabulations

Standard Parking Spaces	81
HC Parking Spaces	8
Total Parking Spaces	89



Approach 4 - Site Notes:

Site work will include:

- Provide a new building to blend with the neighborhood
- Provide separation between bus and car circulation
- Provide new chiller, boiler and generator.
- Compact Footprint to reduce limit of disturbance
- Create a Celebrated Entry
- Use CPTED strategies for safe and secure school

4d

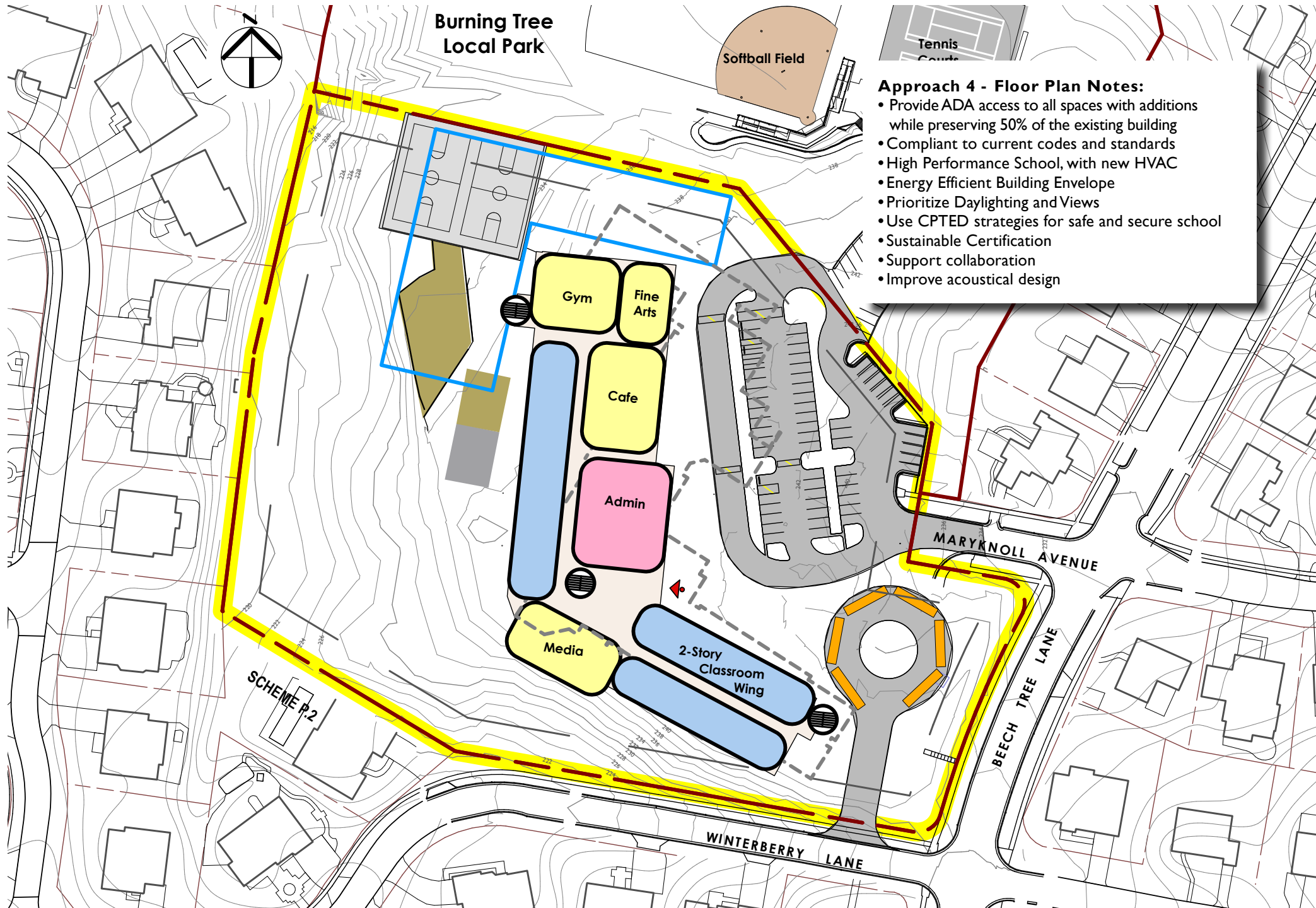


MONTGOMERY
COUNTY PUBLIC
SCHOOLS

Burning Tree ES
27 May 2025



Existing Building	68,119 gsf
Area of Demolition	- 68,119 gsf
<u>Area of Addition</u>	<u>± 80,396 gsf</u>
Total Area of Building	± 80,396 gsf



Approach

4e

New
Replacement School



Site Plan

Burning Tree ES

27 May 2025



Parking Tabulations

Standard Parking Spaces	108
HC Parking Spaces	6
Total Parking Spaces	114



Approach 4 - Site Notes:

Site work will include:

- Provide a new building to blend with the neighborhood
- Provide separation between bus and car circulation
- Provide new chiller, boiler and generator.
- Compact Footprint to reduce limit of disturbance
- Create a Celebrated Entry
- Use CPTED strategies for safe and secure school

Approach

4e

New
Replacement School



Floor Plan

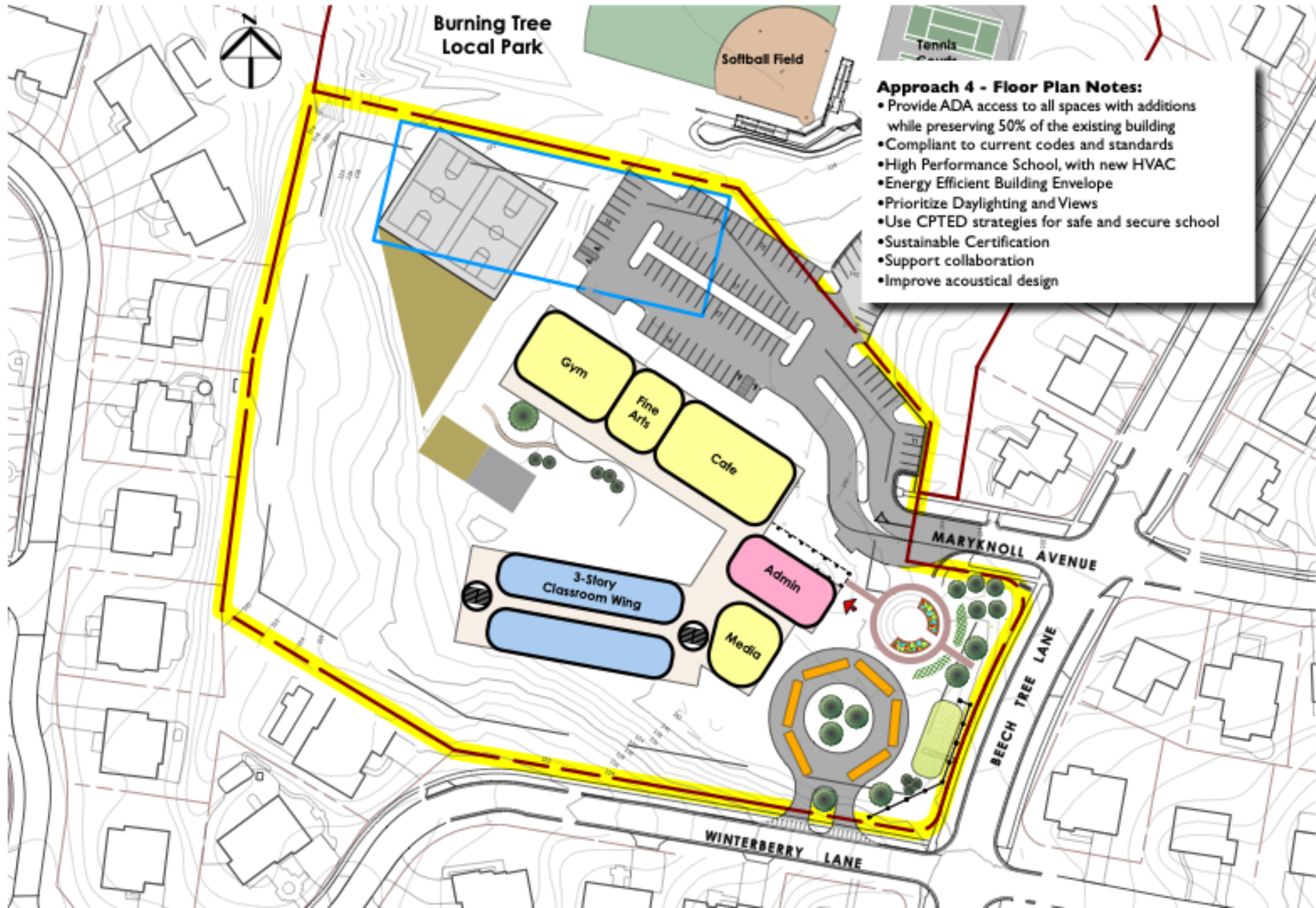
Burning Tree ES

27 May 2025



Gross Square Footage

Existing Building	68,119 gsf
Area of Demolition	- 68,119 gsf
Area of Addition	± 80,396 gsf
Total Area of Building	± 80,396 gsf



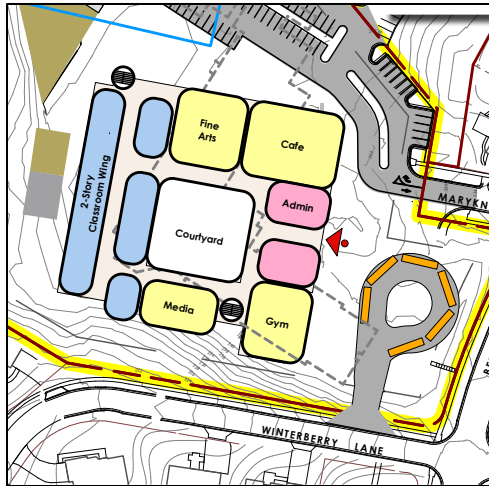
Approach 4 - Floor Plan Notes:

- Provide ADA access to all spaces with additions while preserving 50% of the existing building
- Compliant to current codes and standards
- High Performance School, with new HVAC
- Energy Efficient Building Envelope
- Prioritize Daylighting and Views
- Use CPTED strategies for safe and secure school
- Sustainable Certification
- Support collaboration
- Improve acoustical design

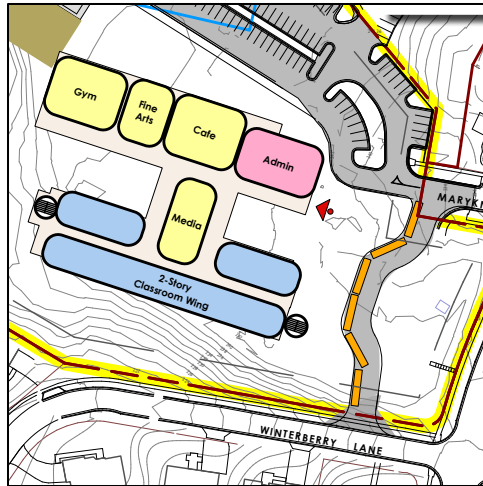


Comparison of Approach 4

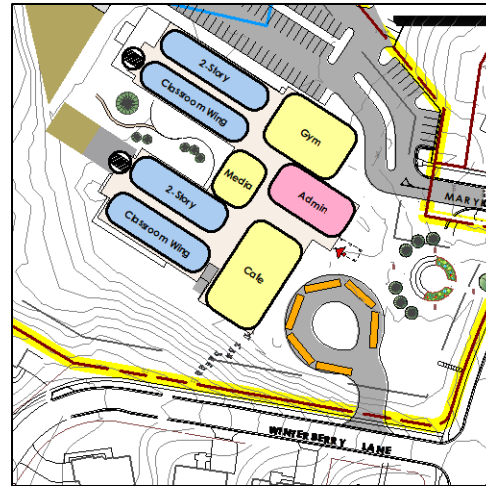
a



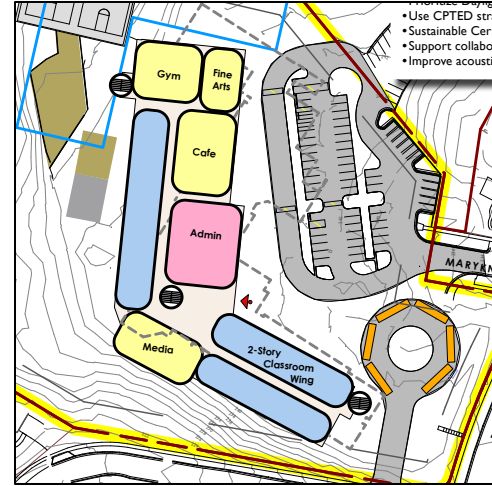
b



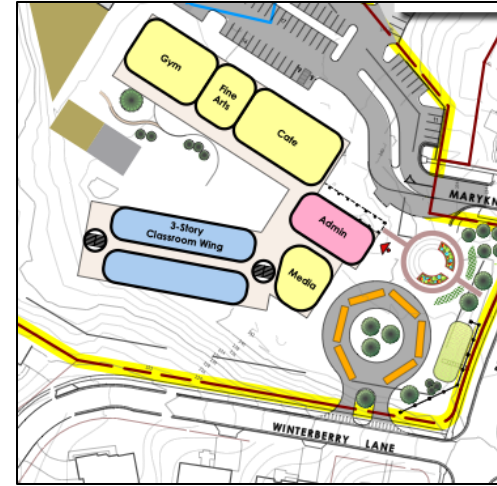
c



d



e





Community Input

What is the
most critical aspect
Burning Tree Elementary School
that should be improved
in the new design?



Community Input

What feature
of the current
of Burning Tree Elementary School
do you value most
and hope to see carried forward
in the new design?

THANK YOU

Questions?

