



WOOTTON

HIGH SCHOOL

*Continuing a Legacy
of Excellence*



COMMUNITY MEETING
JUNE 16, 2026



Honoring Tradition. Building the Future.





PROJECT TEAM INTRODUCTION

Collaborating to create a future-ready Wootton High School.



SCHOOL ADMINISTRATION



Dr. Joseph Bostic
Principal
Thomas S. Wootton High School



PROGRAMS & SPECIALIZED SERVICES STAFF



Dr. Margaret Cage
Chief,
Division of Specialized
Support Services



Dr. Lisa Gaillard-Jones
Associate Superintendent,
Division of Special
Education Services



Ebony Langford-Brown
Director,
Department of
Academic Programs



Angela McLane
Executive Director,
Division of Teaching
and Learning



FACILITIES MANAGEMENT STAFF



Andrea Swiatocha
Deputy Chief, Division of Facilities Management



DJ Connelly
Director, Department of Planning and Construction



Robbie Badstibner
Supervisor, Design and Construction



Ryan Litzinger
Project Manager, Design and Construction



A collaborative team of school leaders, facilities experts, and curriculum specialists committed to thoughtful planning and student success.



Honoring Tradition. Building the Future.





AGENDA



Honoring Tradition. Building the Future.



TIMELINE



SPACES & FEATURES



PROGRAMS & SERVICES



SITE PLAN



FLOOR PLAN REVIEW



RENDERINGS



THE ELEPHANT IN THE ROOM...

While we are here to discuss the new school building tonight, we want to recognize the challenges that the students, staff, and community have endured this year.



AGING FACILITY

Our 1970 building is beyond its intended lifespan.



HVAC FAILURES

Repeated system failures have led to school closures and disruptions.



LEARNING DISRUPTIONS

Instructional time and schedules have been impacted.



BOUNDARY STUDY

Evolving enrollment patterns and community discussions have raised questions.



SAFETY CONCERNS

The safety and wellbeing of our students and staff remain our top priority.



NEW OPPORTUNITY

A chance to create a modern, reliable, and safe environment for future generations.





TIMELINE



★ *Honoring Tradition. Building the Future.* ★



TIMELINE

Honoring Tradition. Building the Future.



**COMMUNITY
MEETING**

JUNE 16, 2026



**COMMUNITY
MEETING
UPDATE**

FALL 2026



**COMMUNITY
MEETING
UPDATE**

SPRING 2027



**TRANSPORTATION /
LOGISTICS
MEETING**

JUNE 2027



**SCHOOL
ADMINISTRATION
MOVES INTO
NEW BUILDING**

JULY 2027



**NEW BUILDING
OPENS**

AUGUST 2027





SPACES AND
FEATURES



Honoring Tradition. Building the Future.





SPACES & FEATURES



Meeting Today's Needs. Preparing for Tomorrow's Opportunities.



**DEDICATED
SECURITY
VESTIBULE**



**ADA
ACCESSIBLE**



**STATE-OF-THE-ART
PERFORMING ARTS
FACILITIES**



**ENHANCED
ATHLETIC
FACILITIES**



**SUSTAINABLE
BUILDING
FEATURES**



**MODERN LEARNING
ENVIRONMENTS**

★ AT A GLANCE: EXISTING VS NEW FACILITY ★

	SITE	BUILDING SIZE	CAPACITY	PARKING SPACES	SCIENCE LABS	DINING AREA	MEDIA CENTER	TEACHING STATIONS
EXISTING	27.37 Acres	295,620 SF	2,120	481	12	8,982 SF	7,681 SF	98
NEW FACILITY	31.7 Acres	358,009 SF	2,219	406 (489 After Hours)	16	10,166 SF	9,473 SF	106

SPACES THAT SUPPORT EXCELLENCE

DESIGNED FOR TODAY'S WOOTTON



295,620 SF

CURRENT FACILITY

CAPACITY: 2,120



358,009 SF

NEW FACILITY

CAPACITY: 2,219



2,700

CORE CAPACITY

★ HIGHLIGHTS OF THE NEW FACILITY

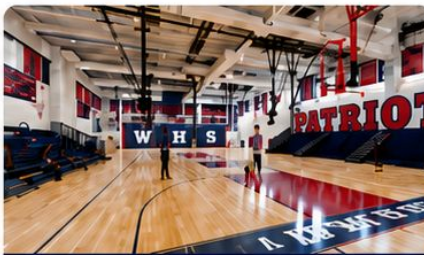
- ★ 62,000+ Additional Square Feet
- ★ 8 Additional Teaching Stations
- ★ 4 Additional Science Labs
- ★ Expanded Dining Commons
- ★ Larger Media Center
- ★ New Performing Arts Facilities
- ★ Enhanced Athletic Amenities
- ★ ADA Accessible



PERFORMING ARTS CENTER



DINING COMMONS



ATHLETIC FACILITIES



MODERN CLASSROOMS



**PROGRAMS
AND SERVICES**



★ *Honoring Tradition. Building the Future.* ★

REGIONAL PROGRAMS & SERVICES

SUPPORTING EVERY STUDENT. PREPARING EVERY LEARNER FOR SUCCESS.

High-quality programs and services that support diverse learning needs, promote student well-being, and empower students to reach their full potential.



SCHOOL COMMUNITY-BASED (SCB)

Serving students with significant cognitive and/or multiple disabilities. Instruction is aligned to Maryland Alternate Academic Achievement Standards and focuses on communication, independence, social skills, and real-world learning in school and community settings, with opportunities to learn alongside nondisabled peers.



AUTISM SERVICES

Provides access to ALOs aligned with the Maryland Alternate Academic Achievement Standards. Students receive Applied Behavior Analysis intensive instruction in a highly structured setting to improve learning and communication with opportunities for inclusion with nondisabled peers. Students participate in Real World Learning and transition services at the secondary level.



SOCIAL EMOTIONAL SPECIAL EDUCATION SERVICES (SESES)

Serves students who demonstrate challenges with social emotional learning and/or behavioral difficulties that adversely impact their school success. These students are served in a continuum of settings that may include the general education environment through self-contained classes with opportunities for participation in general education classes with nondisabled peers as appropriate.



CONNECTIONS TO WELLNESS

This program promotes mental wellness through therapy, positive youth development activities, coaching/mentoring for students, and case management to connect students and families to appropriate resources.



LEARNING



INCLUSION



WELLNESS



OPPORTUNITY



Honoring Tradition. Building the Future.





LOCAL & REGIONAL PROGRAM OPPORTUNITIES

★ **MORE PATHWAYS. MORE OPPORTUNITIES. MORE SUCCESS.**

Students can pursue career pathways at Wootton while also accessing specialized regional programs.



LOCAL PROGRAMS

Offered at Thomas S. Wootton High School



CYBERSECURITY

Networking, cybersecurity, ethical computing, and digital systems aligned with high-demand technology careers.



COMPUTER PROGRAMMING

Coding, software development, and computational problem-solving through hands-on programming experiences.



EARLY CHILDHOOD EDUCATION

Child development, instructional practices, and classroom-based learning experiences.



FIRE EMERGENCY & MEDICAL SERVICES (FEMS)

Students may participate in specialized firefighter and emergency medical training through regional partnerships.



REGIONAL ADMISSIONS PROGRAMS

Open to students throughout Region 4



SCIENCE, MATH & COMPUTER SCIENCE (c)

Explore advanced concepts in science, mathematics, and computer science through innovative coursework and hands-on learning.



CYBERSECURITY (i)

Develop cybersecurity and ethical hacking skills to protect systems and solve real-world security challenges.



VISUAL ART (c)

Build artistic skills and creative expression through studio experiences, design, and visual storytelling.



LEADERSHIP FOR SOCIAL JUSTICE (i)

Develop leadership skills through civic engagement, public policy exploration, service learning, and social impact initiatives.



LEARNING



OPPORTUNITY



WELLNESS



COMMUNITY



Honoring Tradition. Building the Future.



REGION 4

Schools and Programs



Specialized Programs. Regional Opportunities. Student Choice.



RICHARD MONTGOMERY

- International Baccalaureate (c)
- Dance (c)
- Theatre (i)
- Music (c)



ROCKVILLE

- Medical Science with Biomedical (c)
- Clinical Healthcare: Medical Assistant (i)
- Engineering (i)
- Middle College (i/c)



WINSTON CHURCHILL

- Humanities (c)
- Critical Languages, Cultures, and Global Connections (i)
- Video & Audio Production (i)



THOMAS S. WOOTTON

- Science, Math & Computer Science (c)
- Cybersecurity (i)
- Visual Art (c)
- Leadership for Social Justice (i)

(c) CRITERIA-BASED

(i/c) INTEREST-BASED WITH CRITERIA

(i) INTEREST-BASED



Honoring Tradition. Building the Future.





SITE PLAN



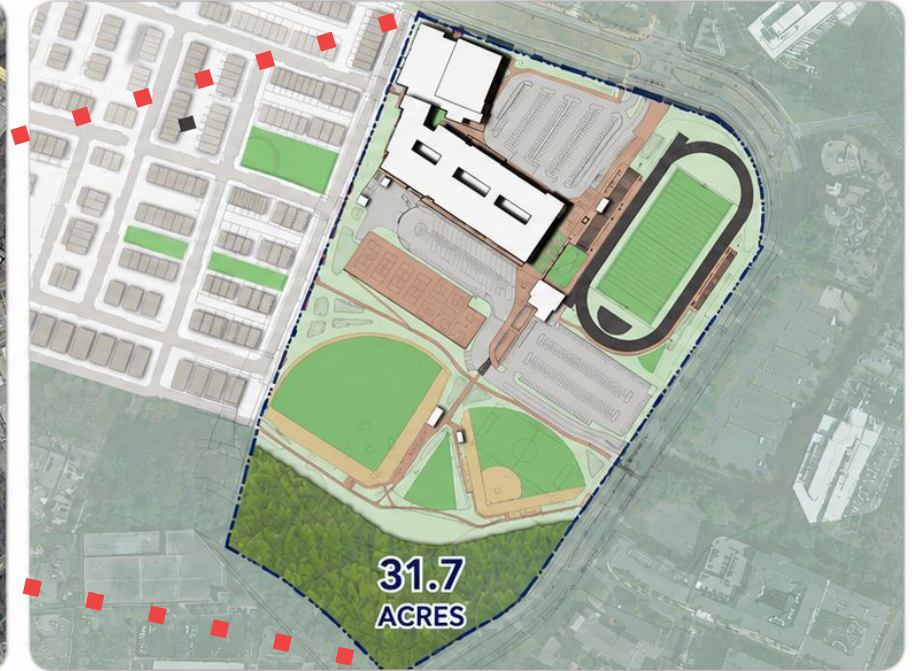
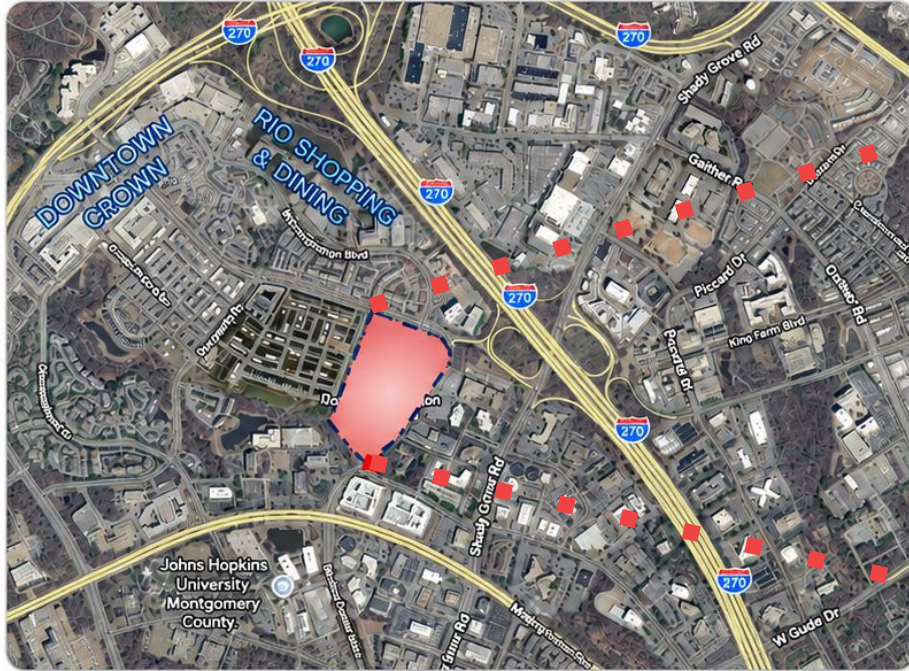
Honoring Tradition. Building the Future.





SITE CONTEXT & CAMPUS CONNECTIONS

★ Honoring Tradition.
Building the Future.



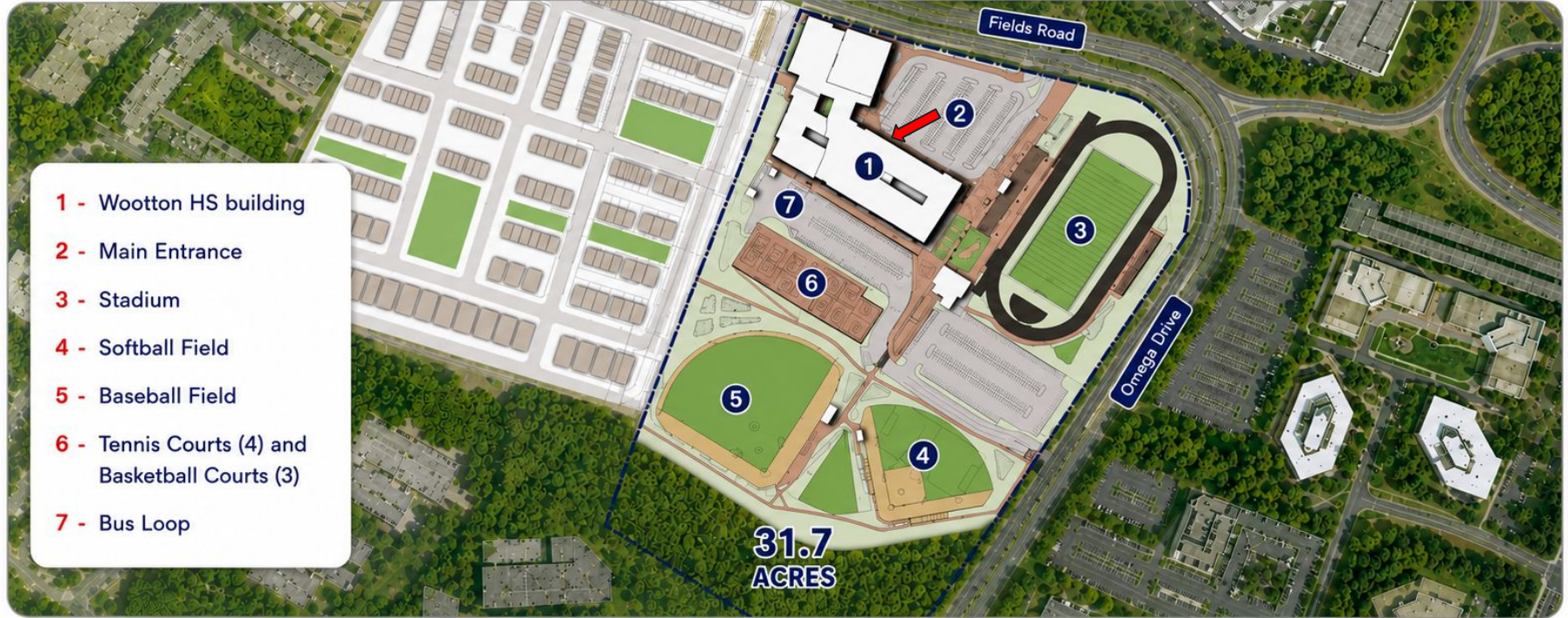
Honoring Tradition. Building the Future.





SITE MAP

★ Honoring Tradition.
Building the Future.



Honoring Tradition. Building the Future.





FLOOR PLAN REVIEW



Honoring Tradition. Building the Future.





MAIN LEVEL OVERVIEW

Designed for Connection, Collaboration, and Student Success.

SPACE KEY

- STUDENT SERVICES
- ACADEMIC AREAS
- STEM / SCIENCE
- SHARED LEARNING SPACES
- ARTS & PERFORMING ARTS
- ATHLETICS / WELLNESS
- SUPPORT SPACES
- STAIRS / ELEVATORS

The main level brings students, staff, and community together with connected academic, arts, wellness, and athletic spaces that support learning and well-being.

KEY DESIGN PRINCIPLES

- Connected Spaces for Student Success
- Easy Access and Wayfinding
- Shared Learning and Community Spaces
- Wellness and Support Close at Hand
- Spaces that Inspire and Engage

PERFORMING ARTS WING
State-of-the-art spaces for music, theater, and the performing arts.

CHILD DEVELOPMENT
Hands-on learning spaces designed to support early childhood education.

LIBRARY / MEDIA CENTER
A central hub for learning, research, and collaboration.

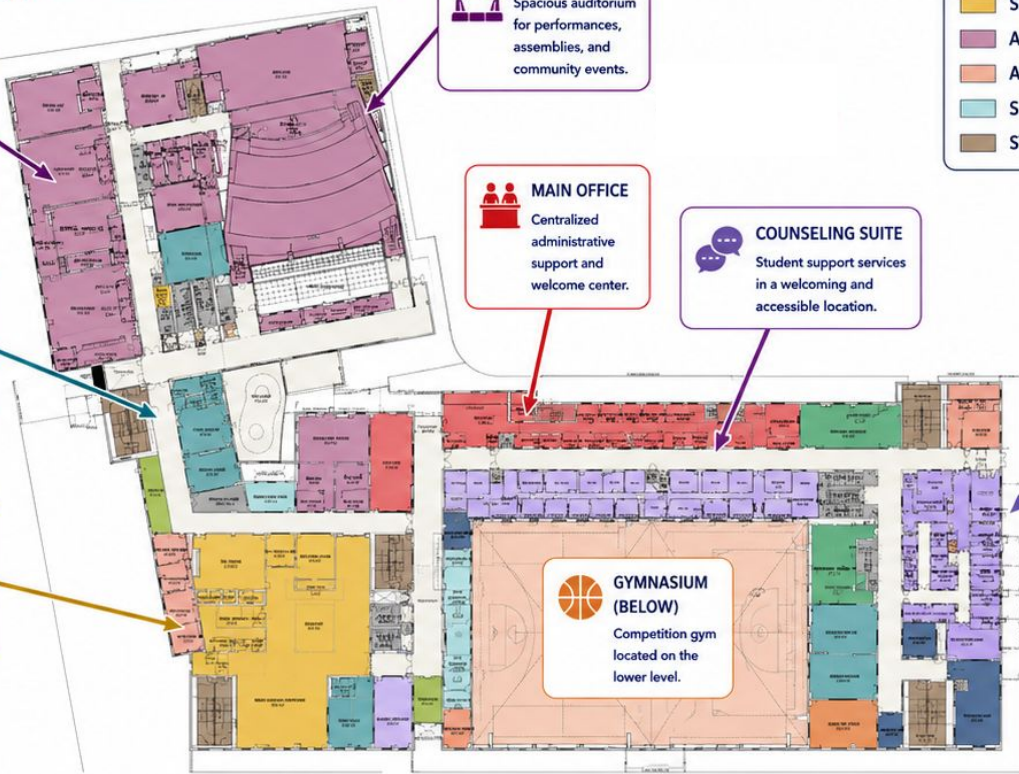
AUDITORIUM
Spacious auditorium for performances, assemblies, and community events.

MAIN OFFICE
Centralized administrative support and welcome center.

COUNSELING SUITE
Student support services in a welcoming and accessible location.

HEALTH SUITE
On-site health services to support student wellness and safety.

GYMNASIUM (BELOW)
Competition gym located on the lower level.



LEARNING



INCLUSION



WELLNESS



OPPORTUNITY

Honoring Tradition. Building the Future.





LOWER LEVEL OVERVIEW

Built for Performance, Support, and Student Success.

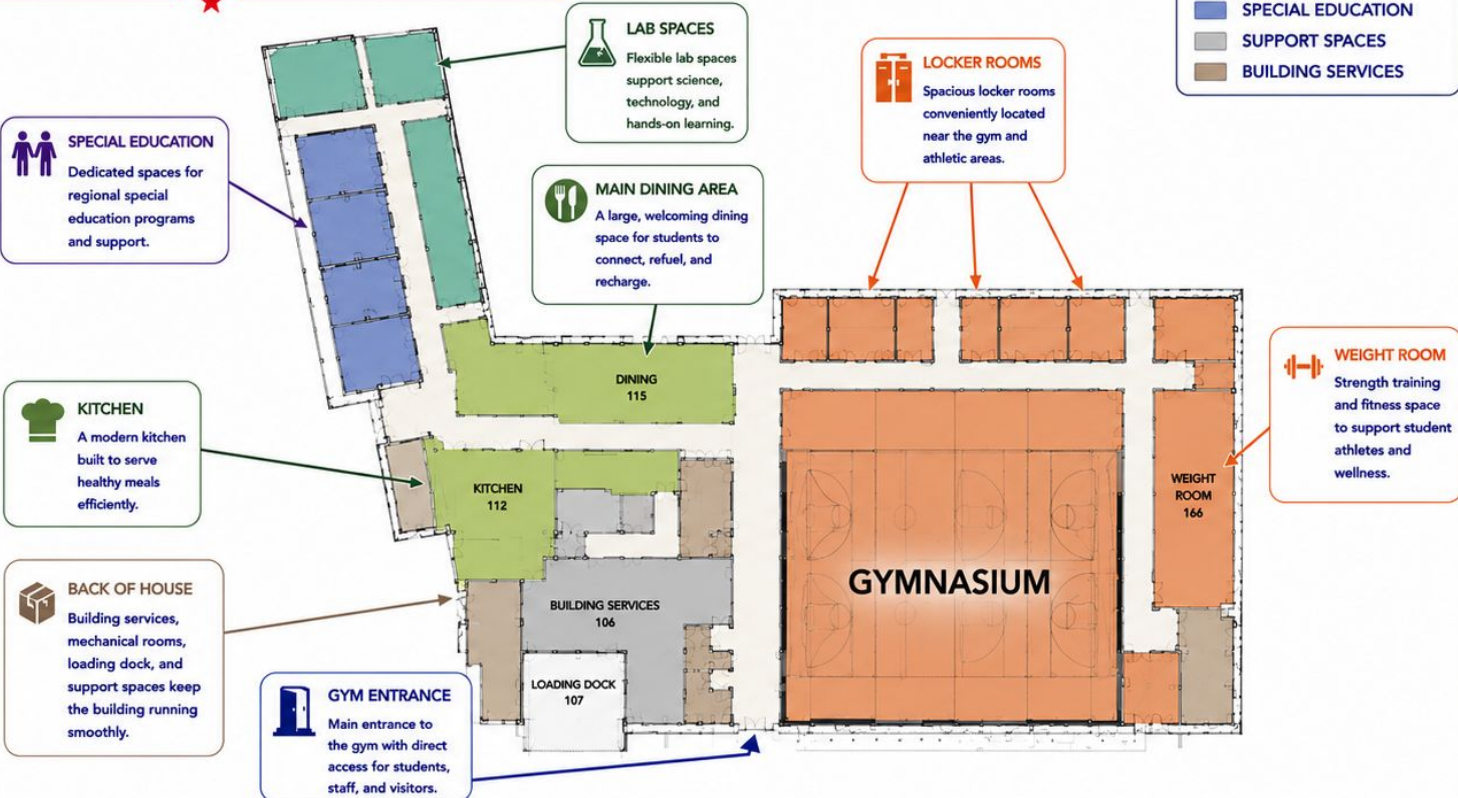
SPACE KEY

- ATHLETICS & FITNESS
- DINING & FOOD SERVICE
- LAB & SCIENCE
- SPECIAL EDUCATION
- SUPPORT SPACES
- BUILDING SERVICES

The lower level brings together athletics, dining, support services, and specialized learning spaces to create a strong foundation for student wellness, performance, and daily operations.

KEY DESIGN PRINCIPLES

- Support Student Wellness and Performance
- Nourishing Dining and Gathering
- Specialized Learning and Inclusion
- Efficient Operations and Service Access
- Safe and Convenient Access



LEARNING



INCLUSION



WELLNESS



OPPORTUNITY

Honoring Tradition. Building the Future.





SECOND FLOOR OVERVIEW

Built for Performance, Support, and Student Success.

The second floor is designed to inspire learning and collaboration through a variety of classrooms, science and lab spaces, and specialized support areas—all connected by elevated courtyards that bring in light, air, and a sense of community.

SPACE KEY

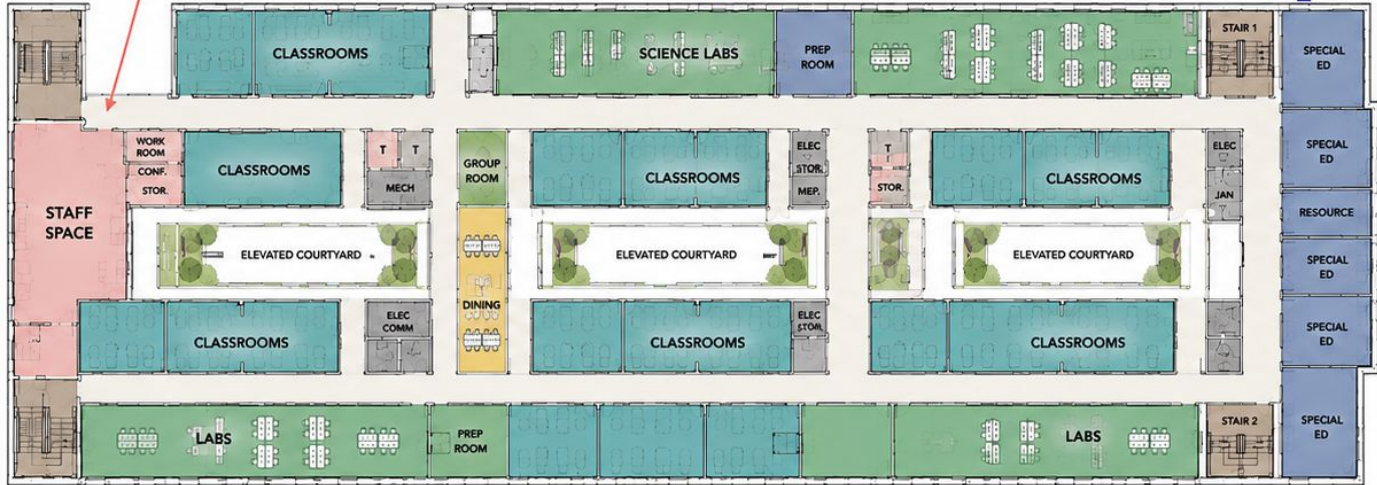
- CLASSROOMS
- SCIENCE / LAB SPACES
- SPECIAL EDUCATION
- STAFF SPACE
- SUPPORT SPACES
- BUILDING SERVICES

STAFF SPACE
 Dedicated areas for our educators to plan, collaborate, and recharge.

SCIENCE LABS
 Fully equipped labs that promote hands-on learning and discovery in science.

CLASSROOMS
 Standard classrooms designed for focused learning and student engagement.

SPECIAL EDUCATION
 Specialized classrooms and support spaces for individualized learning and student success.



KEY DESIGN PRINCIPLES

- Support Collaboration and Educator Excellence
- Flexible Learning Environments
- STEM-Rich Spaces for Innovation
- Natural Light & Views for Well-Being
- Safe, Supportive Learning Spaces



THIRD FLOOR OVERVIEW

Built for Performance, Support, and Student Success.

SPACE KEY

- CLASSROOMS
- SCIENCE / LAB SPACES
- STAFF SPACE
- SUPPORT SPACES
- BUILDING SERVICES

The third floor mirrors the second floor layout, providing consistent, flexible learning environments—plus additional lab spaces and a Greenhouse to support innovation, exploration, and real-world learning.

STAFF SPACE
 Dedicated areas for our educators to plan, collaborate, and recharge.

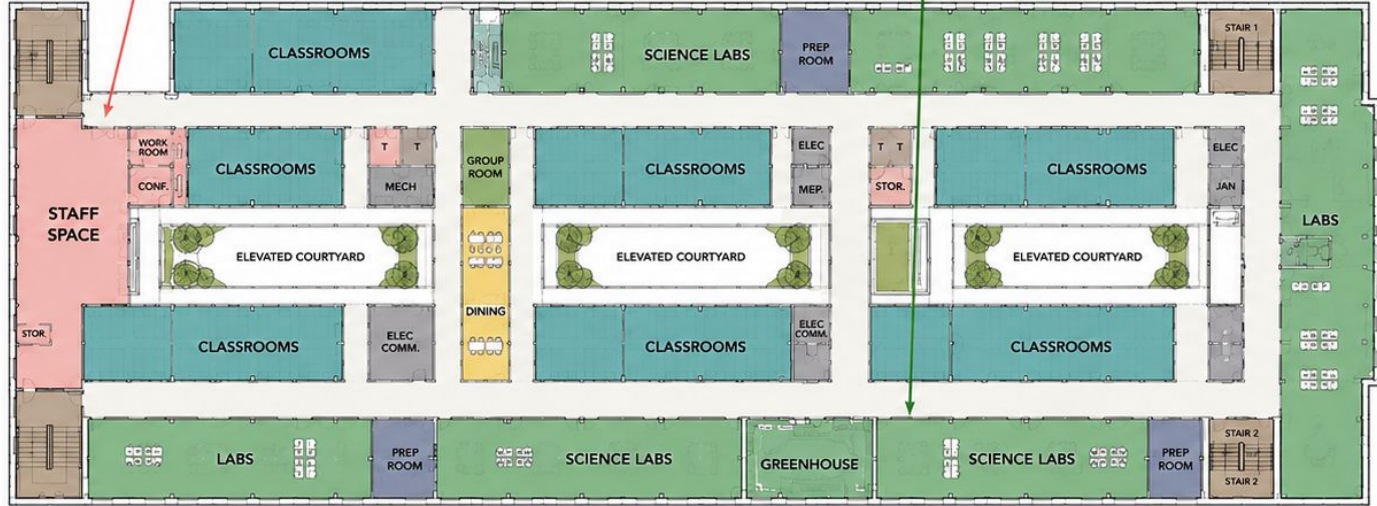
SCIENCE LABS
 Fully equipped labs that promote hands-on learning and discovery in science.

CLASSROOMS
 Standard classrooms designed for focused learning and student engagement.

GREENHOUSE
 A hands-on learning space that supports sustainability, growth, and exploration.

KEY DESIGN PRINCIPLES

- Support Collaboration and Educator Excellence
- Flexible Learning Environments
- STEM-Rich Spaces for Innovation
- Natural Light & Views for Well-Being
- Safe, Supportive Learning Spaces



LEARNING



INCLUSION



WELLNESS



OPPORTUNITY

Honoring Tradition. Building the Future.





★

RENDERINGS



★ *Honoring Tradition. Building the Future.* ★





North Facade

Honoring Tradition. Building the Future.



LEARNING



INCLUSION



WELLNESS



OPPORTUNITY

Honoring Tradition. Building the Future.





South East Facade

Honoring Tradition. Building the Future.



LEARNING



INCLUSION



WELLNESS



OPPORTUNITY

Honoring Tradition. Building the Future.





West Facade

Honoring Tradition. Building the Future.



LEARNING



INCLUSION



WELLNESS



OPPORTUNITY

Honoring Tradition. Building the Future.





Main Entrance

Honoring Tradition. Building the Future.



LEARNING



INCLUSION



WELLNESS



OPPORTUNITY

Honoring Tradition. Building the Future.





Main Lobby

Honoring Tradition. Building the Future.



LEARNING



INCLUSION



WELLNESS



OPPORTUNITY

Honoring Tradition. Building the Future.





Auditorium Lobby

Honoring Tradition. Building the Future.



LEARNING



INCLUSION



WELLNESS



OPPORTUNITY

Honoring Tradition. Building the Future.





Media Center

Honoring Tradition. Building the Future.



LEARNING



INCLUSION



WELLNESS



OPPORTUNITY

Honoring Tradition. Building the Future.





Gymnasium Lobby

Honoring Tradition. Building the Future.



LEARNING



INCLUSION



WELLNESS



OPPORTUNITY

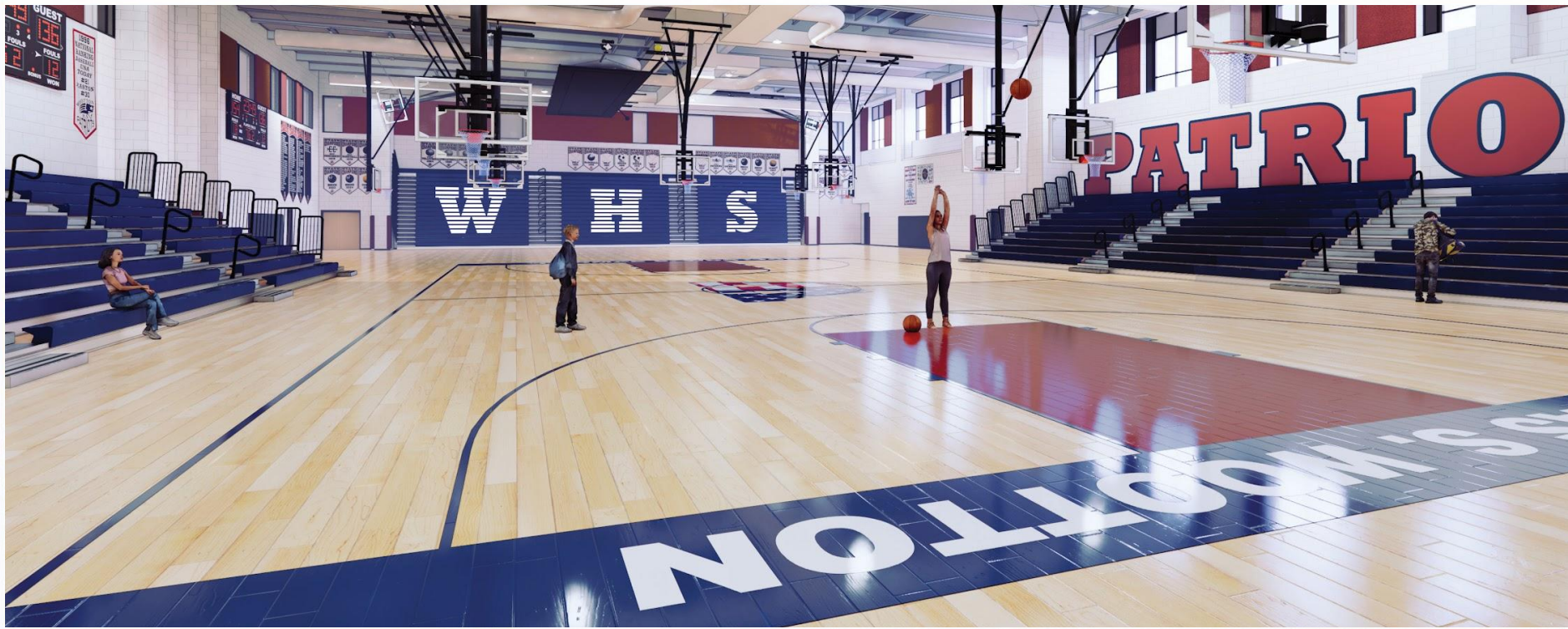
Honoring Tradition. Building the Future.





Gymnasium

Honoring Tradition. Building the Future.



LEARNING



INCLUSION



WELLNESS



OPPORTUNITY

Honoring Tradition. Building the Future.





Main Dining

Honoring Tradition. Building the Future.



LEARNING



INCLUSION



WELLNESS



OPPORTUNITY

Honoring Tradition. Building the Future.





Distributed Dining

Honoring Tradition. Building the Future.



LEARNING



INCLUSION



WELLNESS



OPPORTUNITY

Honoring Tradition. Building the Future.





Questions & Answers



Project Manager: Ryan Litzinger



Ryan_J_Litzinger@mcpssmd.org



<https://www.montgomeryschoolsmd.org/departments/facilities/construction/project/crownhs/>