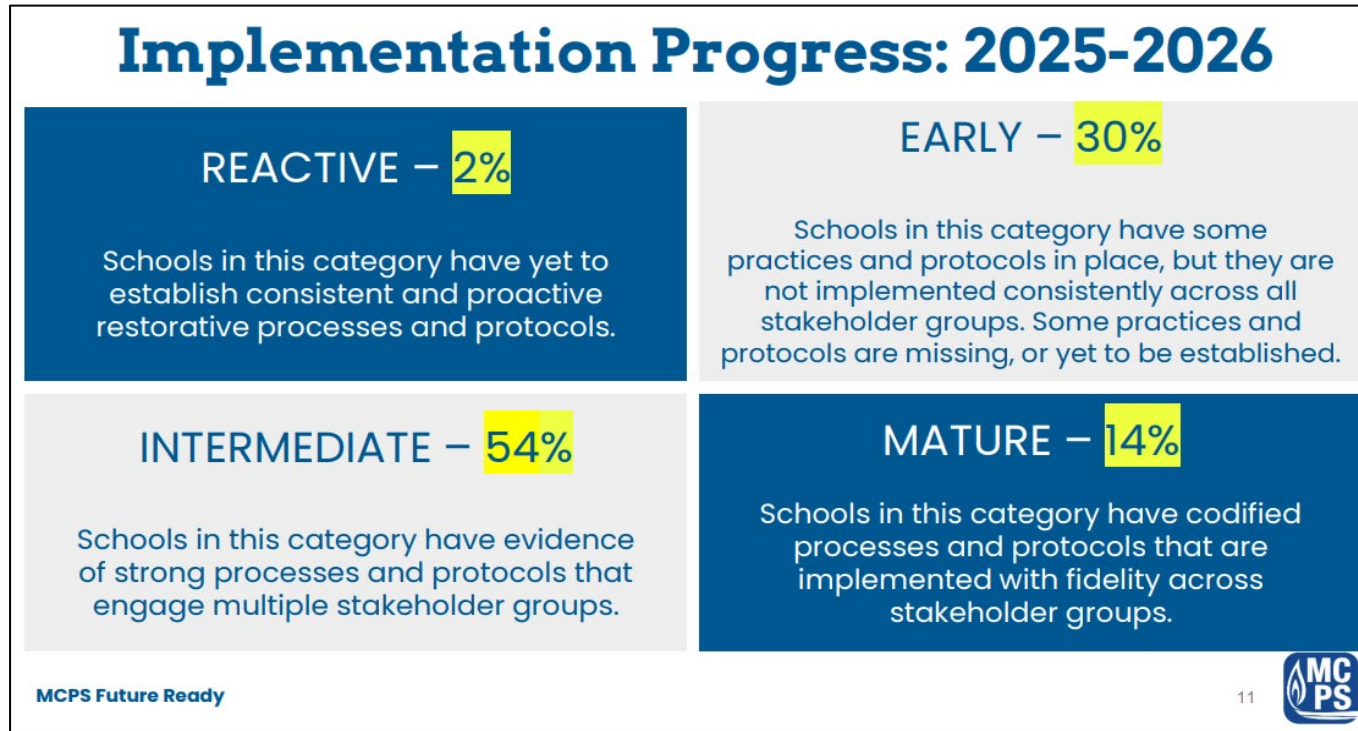


## Response Provided by Board of Education Office Staff

FY26 Restorative Approaches Implementation by SCHOOL TYPE											
SCHOOL TYPE	ALL #	REACTIVE # %		EARLY # %		INTERMEDIATE # %		MATURE # %		NO RUBRIC DATA # %	
ES	136	3	2.2	39	28.7	71	52.2	22	16.2	1	0.7
MS	38			9	23.7	25	65.8	4	10.5		
HS	26	1	3.8	13	50.0	10	38.5	2	7.7		
Special Schools	7			3	42.9	3	42.9			1	14.3
<b>ALL MCPS</b>	<b>207</b>	<b>4</b>	<b>1.9</b>	<b>64</b>	<b>30.9</b>	<b>109</b>	<b>52.7</b>	<b>28</b>	<b>13.5</b>	<b>2</b>	<b>1.0</b>

*Source: 2025-2026 Restorative Approaches Implementation Data from the Department of Districtwide Professional Learning & Organizational Development. Only those schools included in the source data are reported in this table. Board Office staff created data table from source data provided by MCPS Administration.*



SOURCE: [Restorative Approaches & Student Code of Conduct presentation](#) from Board of Ed Work Session – 4.16.2026 ([Agenda Item #10.2](#))