

This e-mail message has been approved for distribution by Dr. Maria V. Navarro, chief academic officer. No hard copy will be provided.

## INFORMATION

Office of Shared Accountability  
MONTGOMERY COUNTY PUBLIC SCHOOLS  
Rockville, Maryland

December 10, 2015

### MEMORANDUM

To: High School Principals

From: Maria V. Navarro, Chief Academic Officer

Subject: INFORMATION: 2015 Advanced Placement Exam Participation and Performance for Students in Montgomery County Public Schools and Public School Students in the State of Maryland and the Nation

Montgomery County Public Schools (MCPS) has continued to emphasize rigorous course-taking resulting in 33,554 Advanced Placement (AP) exams taken by MCPS students in 2015 (Table 1). From 2012 to 2015, both the number of AP exams taken by MCPS students and the number of AP exams with scores of 3 or higher increased 580 and 154 tests, respectively (Table A1). Nevertheless, the percentage of AP exams taken by MCPS students with scores 3 or higher remained steady (0.8 percentage points decrease) in the past four years. Additionally, the percentage of AP exams taken by MCPS students who attained scores of 3 or higher (74.2 percent) was 13.1 and 18.3 percentage points higher than those for public school students in the state of Maryland (61.1 percent) and the nation (55.9 percent), respectively. The number of AP exams taken by MCPS students in 2015 accounted for 31.2 percent of all those taken by Maryland public school students, and the number of AP exams with scores of 3 or higher taken by MCPS students accounted for 37.8 percent of all those in Maryland.

MCPS students of all races/ethnicities exceeded the number of AP exams with scores of 3 or higher compared with their peers in the state and the nation. Particularly noteworthy was the percentage of AP exams taken by MCPS Black or African American students receiving scores of 3 or higher (51.7 percent), which was 17.6 and 22.5 percentage points higher than those in the state (34.1 percent) and the nation (29.2 percent), respectively (Table 1). From 2012 to 2015, the number of AP exams taken by MCPS Black or African American students and the exams with scores of 3 or higher increased 671 and 343 tests, respectively, while the percentage of AP exams with scores of 3 or higher remained steady (Table A1). Overall, the number of AP exams taken by MCPS Black or African American students with scores of 3 or higher accounted for 32.8 percent of all such exams in Maryland. Similarly, the percentage of AP exams taken by MCPS Hispanic/Latino students receiving scores of 3 or higher (58.4 percent) was 6.5 and 18.0 percentage points higher than the public school students in the state of Maryland (51.9 percent) and the nation (40.4 percent), respectively. In the past four years, the number of AP exams taken by MCPS Hispanic/Latino students and the exams with scores of 3 or higher resembled the trend of the district, increasing 215 and 60 tests, respectively. However, the percentage of AP exams

taken by MCPS Hispanic/Latino students with scores of 3 higher decreased 1.6 percentage points. Largely, the number of AP exams taken by MCPS Hispanic/Latino students with scores of 3 or higher accounted for 58.2 percent of all such exams in Maryland.

Table 1  
2015 Advanced Placement Exam Participation and Performance for Public School Students in MCPS, the State of Maryland, and the Nation by Race/Ethnicity

	MCPS			Maryland <sup>a</sup>			Nation <sup>a</sup>		
	N AP Exams Taken	N AP Exams 3 or Higher	% AP Exams 3 or Higher	N AP Exams Taken	N AP Exams 3 or Higher	% AP Exams 3 or Higher	N AP Exams Taken	N AP Exams 3 or Higher	% AP Exams 3 or Higher
All	33,554	24,889	74.2	107,717	65,828	61.1	3,826,645	2,140,859	55.9
AS	8,612	6,777	78.7	17,751	12,937	72.9	576,427	388,186	67.3
BL	3,777	1,953	51.7	17,462	5,954	34.1	280,126	81,840	29.2
HI	4,231	2,469	58.4	8,181	4,243	51.9	699,422	282,794	40.4
WH	15,375	12,447	81.0	57,166	38,713	67.7	2,034,550	1,270,549	62.4
MU	1,517	1,216	80.2	n/a	n/a	n/a	n/a	n/a	n/a

Note. AP = Advanced Placement; AS = Asian; BL = Black or African American; HI = Hispanic/Latino; WH = White; MU = Two or More Races. Results for MCPS American Indian or Alaskan Native and Native Hawaiian or Other Pacific Islander students are included with all students but are not reported separately. AP exam results are based on data reported by the College Board as of May 2015. Results are not available (n/a) for students of Two or More Races in Maryland and the nation. Therefore, race/ethnicity comparison between MCPS and Maryland and the nation should be interpreted with caution.

<sup>a</sup> “All Students” includes those who identified themselves as American Indian, multiracial, or students who did not report their race/ethnicity. AP exam results for Maryland and the nation are based on May 2015 exam data reported by the College Board.

From 2011 to 2015, the percentage of AP exams with scores of 3 or higher increased for those tests taken by MCPS (2.4 percentage points) and Maryland students (2.1 percentage points) (Figure 1). The five-year performance trend for those exams taken by public school students in the nation remained steady.

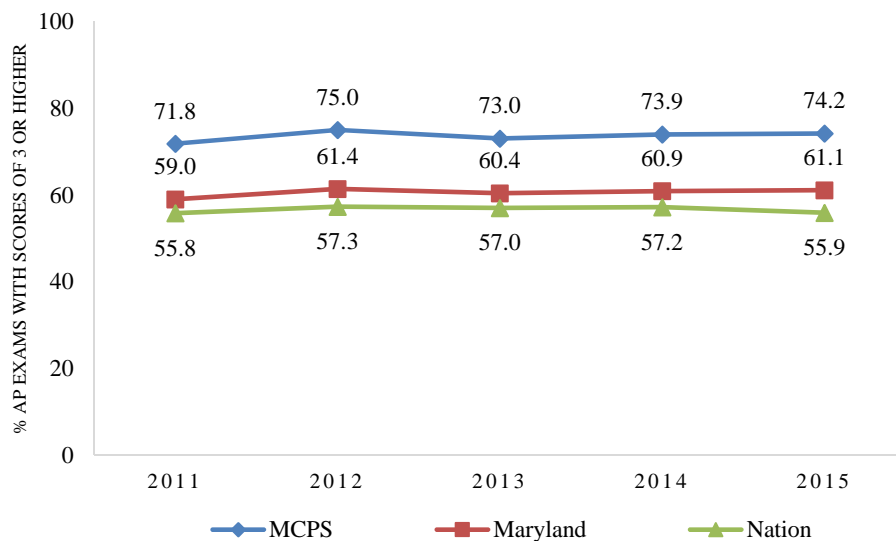


Figure 1. Percentage of Advanced Placement Exam Scores of 3 or Higher for public school students in MCPS, Maryland, and the nation from 2011 to 2015.

Between 2011 and 2015, a notable upward trend was observed for the AP exams with scores of 3 or higher taken by students of all racial/ethnic groups in MCPS, the state of Maryland, and the nation. The percentage of AP exams with scores of 3 or higher taken by Black or African American students in MCPS, Maryland, and the nation increased 5.4, 6.0, and 3.6 percentage points, respectively (Figure 2). The same pattern of AP performance was observed for Hispanic/Latino students in MCPS (3.4 percentage points increase), the state (2.1 percentage points increase), and the nation (1.1 percentage points increase). Asian students' AP exam performance improved in MCPS (1.5 percentage points increase), Maryland (1.2 percentage points increase), and the nation (1.3 percentage points increase). The percentage of AP exams with scores of 3 or higher taken by White students in MCPS and the state increased 2.4 and 1.5 percentage points, respectively, while the AP exam performance of their counterparts in the nation held steady in the last five years.

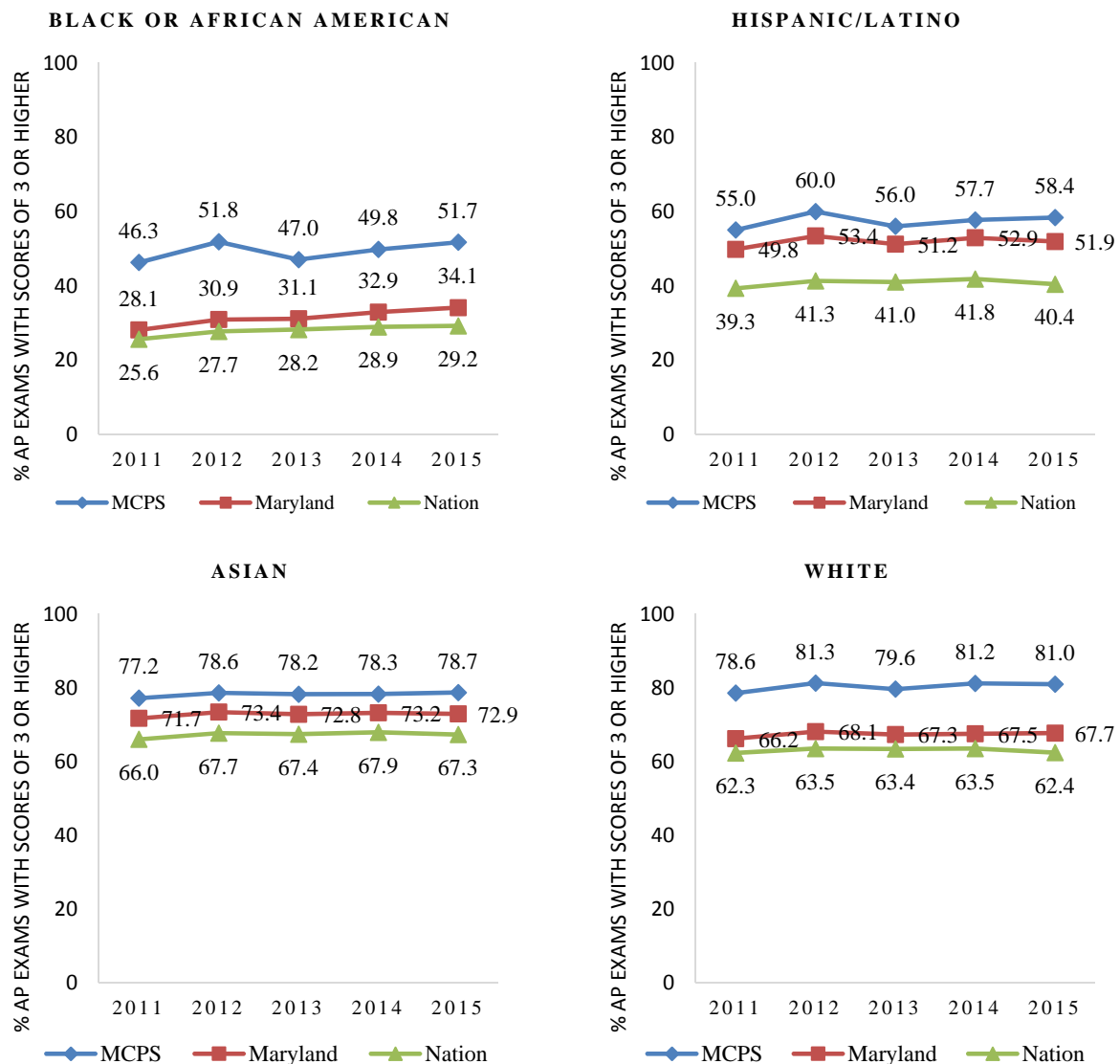


Figure 2. Percentage of Advanced Placement Exam Scores of 3 or Higher by Race/Ethnicity in MCPS, Maryland, and the nation from 2011 to 2015.

MCPS high schools continued to support AP exam participation and performance of minority students. Between 2014 and 2015, 15 out of the 25 high schools observed an increase in the number of AP exams taken by Black or African American students, and 11 out of the 25 high schools demonstrated an increase in the number of AP exams taken by Hispanic/Latino students (Tables A2a and A2b). Fourteen of the 25 high schools noted an increase in the percentage of AP exams taken by Black or African American students who earned scores of 3 or higher, and 12 of the 25 high schools recorded an increase in the percentage of AP exams taken by Hispanic/Latino students who earned scores of 3 or higher. Eight of the 25 high schools noted increases for both AP exam participation and performance for Black or African American students; of those, Damascus High School demonstrated the greatest improvement (12.6 percentage points) in these students earning AP exam scores of 3 or higher. Four of the 25 high schools identified increases for both AP exam participation and performance for Hispanic/Latino students; out of the 4 schools, Richard Montgomery High School recorded the largest increase (4.5 percentage points) in these students attaining AP exam scores of 3 or higher.

In 2015, in the order of popularity, the 20 AP exams most frequently taken by students in MCPS were: U.S. Government and Politics, English Language and Composition, Psychology, World History, English Literature and Composition, Calculus AB, U.S. History, Statistics, Calculus BC, Biology, Environmental Science, Spanish Language, Chemistry, Human Geography, Microeconomics, Macroeconomics, Computer Science A, Physics C: Mechanics, European History, and Physics 1 (Table B1).

Noteworthy gains were realized in both the number of exams taken and the percentage of AP exam scores of 3 or higher in English Language and Composition, U.S. Government and Politics, and Computer Science A for students overall and for at least three racial/ethnic groups from 2014 to 2015 (Table B2). There was an increase in the number of exams taken and the percentage of AP exam scores of 3 or higher in English Language and Composition, Statistics, Biology, Environmental Science, U.S. Government and Politics, Human Geography, and Spanish Language for Black or African American students. An increase was evident for Hispanic/Latino students in the number of exams taken and the percentage of AP exam scores of 3 or higher in Microeconomics and U.S. Government and Politics.

One of MCPS' five strategic priorities in 2015–2016 school year is to ensure students have the math and literacy skills to be college and career ready. The positive trends in AP exam participation and performance provide evidence of MCPS' continuing efforts to embed the math and literacy skills in challenging college-level curriculum for students of all races/ethnicities. The attached tables include additional AP exam information for review. Tables A1 through A6 provide data on AP exam participation and performance among groups of students enrolled in MCPS schools, and public school students in Maryland and the nation. Table B1 describes the 20 most popular AP exams taken by public school students in MCPS, Maryland, and the nation in 2015. Table B2 delineates the 20 most frequently taken AP exams by race/ethnicity in MCPS. Tables B3 through B22 provide the information of the 20 most frequently taken AP exams by high school.

If you have any questions about AP exam participation and performance data, please contact Dr. Kecia L. Addison, supervisor, applied research, Office of Shared Accountability, at 301-279-3194.

MVN:sl

Attachment

Copy to:

Executive Staff  
Dr. Addison  
Mrs. Collins  
High School Administrative Secretaries  
Mrs. Liu  
Dr. Steinberg  
Mr. Koutsos  
Mr. Lloyd

Table A1  
 Number of Advanced Placement Exams Taken and Number and Percentage of Advanced Placement Exam Scores of 3 or Higher for  
 MCPS Students, and Public School Students in Maryland and the Nation by Race/Ethnicity and Advanced Placement Exam Year

Student Group	AP Exam Year	MCPS			Maryland (Public Schools) <sup>a</sup>			Nation (Public Schools) <sup>a</sup>		
		N AP Exams Taken	N AP Exams 3 or Higher	% AP Exams 3 or Higher	N AP Exams Taken	N AP Exams 3 or Higher	% AP Exams 3 or Higher	N AP Exams Taken	N AP Exams 3 or Higher	% AP Exams 3 or Higher
All Students	2012	32,974	24,735	75.0	102,354	62,802	61.4	3,151,132	1,804,458	57.3
	2013	33,642	24,563	73.0	108,038	65,278	60.4	3,355,934	1,913,723	57.0
	2014	33,662	24,893	73.9	108,826	66,325	60.9	3,567,207	2,039,795	57.2
	2015	33,554	24,889	74.2	107,717	65,828	61.1	3,826,645	2,140,859	55.9
Asian	2012	8,356	6,568	78.6	15,673	11,509	73.4	457,597	309,747	67.7
	2013	8,687	6,796	78.2	17,127	12,462	72.8	507,461	341,836	67.4
	2014	8,823	6,906	78.3	17,203	12,585	73.2	539,404	366,467	67.9
	2015	8,612	6,777	78.7	17,751	12,937	72.9	576,427	388,186	67.3
Black or African American	2012	3,106	1,610	51.8	15,717	4,862	30.9	223,991	62,039	27.7
	2013	3,297	1,551	47.0	17,583	5,461	31.1	244,017	68,896	28.2
	2014	3,578	1,781	49.8	18,238	6,000	32.9	265,801	76,947	28.9
	2015	3,777	1,953	51.7	17,462	5,954	34.1	280,126	81,840	29.2
Hispanic/Latino	2012	4,016	2,409	60.0	6,764	3,613	53.4	504,047	208,250	41.3
	2013	4,253	2,382	56.0	8,075	4,135	51.2	574,737	235,586	41.0
	2014	4,271	2,465	57.7	8,332	4,407	52.9	633,987	265,173	41.8
	2015	4,231	2,469	58.4	8,181	4,243	51.9	699,422	282,794	40.4
White	2012	15,963	12,972	81.3	56,108	38,209	68.1	1,737,117	1,102,332	63.5
	2013	15,745	12,537	79.6	59,306	39,892	67.3	1,854,735	1,176,063	63.4
	2014	15,519	12,598	81.2	59,358	40,053	67.5	1,941,886	1,233,028	63.5
	2015	15,375	12,447	81.0	57,166	38,713	67.7	2,034,550	1,270,549	62.4
Two or More Races	2012	1,477	1,142	77.3	n/a	n/a	n/a	n/a	n/a	n/a
	2013	1,606	1,257	78.3	n/a	n/a	n/a	n/a	n/a	n/a
	2014	1,419	1,115	78.6	n/a	n/a	n/a	n/a	n/a	n/a
	2015	1,517	1,216	80.2	n/a	n/a	n/a	n/a	n/a	n/a

*Note.* AP = Advanced Placement. Results for MCPS American Indian or Alaskan Native and Native Hawaiian or Other Pacific Islander students are included with all students but are not reported separately. AP exam results for MCPS are reported for MCPS-verified students who received scores as of November of each reporting year. Results are not available (n/a) for students of Two or More Races in Maryland and the nation. Therefore, race/ethnicity comparison between MCPS and Maryland and the nation should be interpreted with caution.

<sup>a</sup> "All Students" includes students who identified themselves as American Indian or multiracial and students who did not report their race/ethnicity. AP exam results for Maryland and the nation are based on May 2015 exam data reported by the College Board.

Table A2a  
 Number of Advanced Placement Exams Taken by MCPS Students and Number and Percentage of Advanced Placement Exam Scores of 3 or Higher in 2014 and 2015 by High School and Race/Ethnicity

High School	All Students						Asian						Black or African American					
	N AP Exams Taken		N Exams 3 or Higher		% Exams 3 or Higher		N AP Exams Taken		N Exams 3 or Higher		% Exams 3 or Higher		N AP Exams Taken		N Exams 3 or Higher		% Exams 3 or Higher	
	2014	2015	2014	2015	2014	2015	2014	2015	2014	2015	2014	2015	2014	2015	2014	2015	2014	2015
All	33,662	33,554	24,893	24,889	73.9	74.2	8,823	8,612	6,906	6,777	78.3	78.7	3,578	3,777	1,781	1,953	49.8	51.7
Bethesda-Chevy Chase	1,602	1,664	1,232	1,313	76.9	78.9	102	89	75	64	73.5	71.9	134	110	68	46	50.7	41.8
Montgomery Blair	2,271	2,106	1,970	1,851	86.7	87.9	805	756	727	691	90.3	91.4	263	260	171	180	65.0	69.2
James Hubert Blake	1,159	998	703	699	60.7	70.0	199	178	117	117	58.8	65.7	316	271	140	173	44.3	63.8
Winston Churchill	2,811	2,900	2,415	2,548	85.9	87.9	883	905	790	817	89.5	90.3	112	103	70	78	62.5	75.7
Clarksburg	1,102	1,138	798	767	72.4	67.4	430	409	325	309	75.6	75.6	146	168	80	82	54.8	48.8
Damascus	969	932	643	595	66.4	63.8	71	79	46	53	64.8	67.1	49	55	25	35	51.0	63.6
Albert Einstein	995	969	620	605	62.3	62.4	146	143	86	67	58.9	46.9	149	186	63	87	42.3	46.8
Gaithersburg	617	668	353	373	57.2	55.8	122	128	63	68	51.6	53.1	87	108	43	56	49.4	51.9
Walter Johnson	2,529	2,488	2,199	2,186	87.0	87.9	435	368	357	327	82.1	88.9	107	121	82	83	76.6	68.6
John F. Kennedy	499	457	168	117	33.7	25.6	87	81	36	19	41.4	23.5	189	188	58	41	30.7	21.8
Col. Zadok Magruder	826	773	608	565	73.6	73.1	230	178	164	127	71.3	71.3	75	84	46	46	61.3	54.8
Richard Montgomery	2,106	2,188	1,718	1,766	81.6	80.7	864	885	752	751	87.0	84.9	148	161	99	102	66.9	63.4
Northwest	1,661	1,751	907	1,026	54.6	58.6	560	579	304	359	54.3	62.0	232	245	91	107	39.2	43.7
Northwood	542	552	272	240	50.2	43.5	60	67	25	27	41.7	40.3	112	133	34	41	30.4	30.8
Paint Branch	903	996	559	600	61.9	60.2	322	324	190	177	59.0	54.6	323	396	187	236	57.9	59.6
Poolesville	1,870	1,978	1,664	1,694	89.0	85.6	725	785	661	707	91.2	90.1	66	72	49	54	74.2	75.0
Quince Orchard	2,028	2,045	1,215	1,199	59.9	58.6	358	382	237	254	66.2	66.5	162	171	61	54	37.7	31.6
Rockville	733	553	426	319	58.1	57.7	112	74	61	36	54.5	48.6	62	59	29	23	46.8	39.0
Seneca Valley	410	279	167	147	40.7	52.7	90	51	52	36	57.8	70.6	96	65	26	31	27.1	47.7
Sherwood	1,492	1,584	1,152	1,161	77.2	73.3	259	296	193	221	74.5	74.7	123	148	82	89	66.7	60.1
Springbrook	749	741	361	391	48.2	52.8	211	174	126	102	59.7	58.6	256	270	83	116	32.4	43.0
Watkins Mill	303	324	126	116	41.6	35.8	44	49	21	20	47.7	40.8	74	71	18	9	24.3	12.7
Wheaton	746	801	368	401	49.3	50.1	130	152	67	87	51.5	57.2	202	244	106	107	52.5	43.9
Walt Whitman	2,042	2,212	1,842	1,987	90.2	89.8	277	297	250	270	90.3	90.9	35	33	29	28	82.9	84.8
Thomas S. Wootton	2,697	2,457	2,407	2,223	89.2	90.5	1,301	1,183	1,181	1,071	90.8	90.5	60	55	41	49	68.3	89.1

*Note.* AP = Advanced Placement. Results for MCPS American Indian or Alaskan Native and Native Hawaiian or Other Pacific Islander students are included with all students but are not reported separately. AP exam results are based on data reported by the College Board as of May 2015. To comply with federal requirements, any percentage rates greater than or equal to 95.0% or less than or equal to 5.0% will be noted as  $\geq 95.0$  or  $\leq 5.0$ , respectively, and the number of AP exams and the number of exams with scores of 3 or higher will not be reported (--). Additionally, results are not reported (--) for groups with fewer than 10 AP exams. For groups of between 10 and 20 AP exams, only the percentage rate will be reported.

Table A2b  
 Number of Advanced Placement Exams Taken by MCPS Students and Number and Percentage of Advanced Placement Exam Scores of 3 or Higher in 2014 and 2015 by High School and Race/Ethnicity

High School	Hispanic/Latino						White						Two or More Races					
	N AP Exams Taken		N Exams 3 or Higher		% Exams 3 or Higher		N AP Exams Taken		N Exams 3 or Higher		% Exams 3 or Higher		N AP Exams Taken		N Exams 3 or Higher		% Exams 3 or Higher	
	2014	2015	2014	2015	2014	2015	2014	2015	2014	2015	2014	2015	2014	2015	2014	2015	2014	2015
All	4,271	4,231	2,465	2,469	57.7	58.4	15,519	15,375	12,598	12,447	81.2	81.0	1,419	1,517	1,115	1,216	78.6	80.2
Bethesda-Chevy Chase	148	140	91	104	61.5	74.3	1,129	1,222	922	1,016	81.7	83.1	86	103	75	83	87.2	80.6
Montgomery Blair	182	177	136	137	74.7	77.4	882	797	811	738	92.0	92.6	135	114	122	103	90.4	90.4
James Hubert Blake	188	144	97	86	51.6	59.7	412	357	318	286	77.2	80.1	41	45	29	34	70.7	75.6
Winston Churchill	180	234	146	187	81.1	79.9	1,531	1,554	1,325	1,368	86.5	88.0	104	104	83	98	79.8	94.2
Clarksburg	138	177	79	97	57.2	54.8	359	338	290	246	80.8	72.8	25	46	20	33	80.0	71.7
Damascus	111	120	64	61	57.7	50.8	699	651	487	432	69.7	66.4	39	23	21	10	53.8	43.5
Albert Einstein	259	261	133	143	51.4	54.8	413	350	322	290	78.0	82.9	26	25	15	16	57.7	64.0
Gaithersburg	177	204	107	113	60.5	55.4	214	200	128	123	59.8	61.5	--	25	--	10	69.2	40.0
Walter Johnson	277	275	224	221	80.9	80.4	1,590	1,576	1,429	1,426	89.9	90.5	118	147	107	129	90.7	87.8
John F. Kennedy	176	145	52	40	29.5	27.6	40	38	19	15	47.5	39.5	--	--	--	--	--	--
Col. Zadok Magruder	157	147	108	104	68.8	70.7	330	316	265	251	80.3	79.4	33	48	25	37	75.8	77.1
Richard Montgomery	280	296	172	195	61.4	65.9	690	748	599	633	86.8	84.6	122	94	95	83	77.9	88.3
Northwest	225	209	92	91	40.9	43.5	573	628	377	409	65.8	65.1	71	87	43	59	60.6	67.8
Northwood	176	189	90	78	51.1	41.3	180	146	115	85	63.9	58.2	--	--	--	--	53.8	52.9
Paint Branch	71	94	40	52	56.3	55.3	155	144	118	111	76.1	77.1	28	37	22	24	78.6	64.9
Poolesville	104	93	89	71	85.6	76.3	903	911	803	762	88.9	83.6	64	109	55	94	85.9	86.2
Quince Orchard	247	263	104	118	42.1	44.9	1,179	1,152	759	725	64.4	62.9	77	75	53	48	68.8	64.0
Rockville	185	112	94	47	50.8	42.0	351	276	232	195	66.1	70.7	23	31	10	17	43.5	54.8
Seneca Valley	77	41	27	12	35.1	29.3	124	100	57	55	46.0	55.0	--	21	--	12	25.0	57.1
Sherwood	133	130	95	84	71.4	64.6	919	942	733	711	79.8	75.5	56	68	48	56	85.7	82.4
Springbrook	124	146	55	68	44.4	46.6	125	121	86	81	68.8	66.9	32	30	11	24	34.4	80.0
Watkins Mill	106	136	43	54	40.6	39.7	66	58	38	30	57.6	51.7	--	--	--	--	46.2	--
Wheaton	284	254	98	95	34.5	37.4	104	115	74	82	71.2	71.3	26	36	23	30	88.5	83.3
Walt Whitman	148	141	131	125	88.5	88.7	1,478	1,615	1,340	1,449	90.7	89.7	103	125	92	114	89.3	91.2
Thomas S. Wootton	118	103	98	86	83.1	83.5	1,073	1,020	951	928	88.6	91.0	144	93	136	88	94.4	94.6

Note. AP = Advanced Placement. Results for MCPS American Indian or Alaskan Native and Native Hawaiian or Other Pacific Islander students are included with all students but are not reported separately. AP exam results are based on data reported by the College Board as of May 2015. To comply with federal requirements, any percentage rates greater than or equal to 95.0% or less than or equal to 5.0% will be noted as  $\geq 95.0$  or  $\leq 5.0$ , respectively, and the number of AP exams and the number of exams with scores of 3 or higher will not be reported (--). Additionally, results are not reported (--) for groups with fewer than 10 AP exams. For groups of between 10 and 20 AP exams, only the percentage rate will be reported.



Table A3a  
 Number of Students Who Took One or More Advanced Placement Exams and Number and Percentage of Test Takers Who Earned One or More Advanced Placement Exam Scores of 3 or Higher in 2014 and 2015 by High School and Race/Ethnicity

High School	All Students						Asian						Black or African American					
	N		N Scored 3 or Higher		% Scored 3 or Higher		N		N Scored 3 or Higher		% Scored 3 or Higher		N		N Scored 3 or Higher		% Scored 3 or Higher	
	2014	2015	2014	2015	2014	2015	2014	2015	2014	2015	2014	2015	2014	2015	2014	2015	2014	2015
All	17,055	17,008	12,781	12,792	74.9	75.2	3,791	3,778	2,999	2,998	79.1	79.4	2,192	2,264	1,134	1,229	51.7	54.3
Bethesda-Chevy Chase	834	876	676	727	81.1	83.0	52	51	42	37	80.8	72.5	80	70	44	35	55.0	50.0
Montgomery Blair	919	891	803	792	87.4	88.9	255	239	231	220	90.6	92.1	135	139	92	100	68.1	71.9
James Hubert Blake	615	524	397	384	64.6	73.3	93	81	64	62	68.8	76.5	193	159	88	99	45.6	62.3
Winston Churchill	1,256	1,244	1,088	1,109	86.6	89.1	342	344	309	319	90.4	92.7	61	56	39	44	63.9	78.6
Clarksburg	604	621	428	430	70.9	69.2	207	215	152	160	73.4	74.4	99	102	54	57	54.5	55.9
Damascus	491	449	350	313	71.3	69.7	33	33	24	26	72.7	78.8	23	32	14	22	60.9	68.8
Albert Einstein	531	500	359	349	67.6	69.8	72	76	44	44	61.1	57.9	85	102	42	52	49.4	51.0
Gaithersburg	419	447	259	277	61.8	62.0	72	77	40	46	55.6	59.7	69	77	35	41	50.7	53.2
Walter Johnson	1,201	1,174	1,067	1,039	88.8	88.5	181	153	155	136	85.6	88.9	63	64	48	46	76.2	71.9
John F. Kennedy	335	343	122	104	36.4	30.3	55	60	24	19	43.6	31.7	130	136	40	35	30.8	25.7
Col. Zadok Magruder	471	450	356	338	75.6	75.1	117	97	86	70	73.5	72.2	42	47	30	28	71.4	59.6
Richard Montgomery	961	1,017	819	843	85.2	82.9	350	363	317	310	90.6	85.4	85	90	57	58	67.1	64.4
Northwest	827	864	496	536	60.0	62.0	247	252	155	167	62.8	66.3	132	134	54	61	40.9	45.5
Northwood	346	341	187	174	54.0	51.0	39	41	18	17	46.2	41.5	73	81	25	31	34.2	38.3
Paint Branch	530	543	343	366	64.7	67.4	157	146	98	96	62.4	65.8	212	239	126	155	59.4	64.9
Poolesville	715	748	641	661	89.7	88.4	--	--	--	--	≥95.0	≥95.0	29	24	21	22	72.4	91.7
Quince Orchard	972	1,003	632	602	65.0	60.0	151	152	102	91	67.5	59.9	83	95	40	39	48.2	41.1
Rockville	410	331	278	212	67.8	64.0	60	45	38	26	63.3	57.8	38	34	23	16	60.5	47.1
Seneca Valley	280	233	109	124	38.9	53.2	51	42	26	30	51.0	71.4	70	52	19	25	27.1	48.1
Sherwood	779	827	642	640	82.4	77.4	122	133	99	109	81.1	82.0	71	89	50	55	70.4	61.8
Springbrook	481	478	223	251	46.4	52.5	113	97	64	53	56.6	54.6	175	183	58	84	33.1	45.9
Watkins Mill	249	281	113	112	45.4	39.9	37	43	19	20	51.4	46.5	62	61	18	9	29.0	14.8
Wheaton	446	477	240	268	53.8	56.2	73	87	40	58	54.8	66.7	121	144	72	67	59.5	46.5
Walt Whitman	1,086	1,124	999	1,029	92.0	91.5	--	137	--	127	≥95.0	92.7	24	21	21	18	87.5	85.7
Thomas S. Wootton	1,297	1,222	1,154	1,112	89.0	91.0	552	552	508	503	92.0	91.1	37	33	24	30	64.9	90.9

Note. AP = Advanced Placement. Results for MCPS American Indian or Alaskan Native and Native Hawaiian or Other Pacific Islander students are included with all students but are not reported separately. AP exam results are based on data reported by the College Board as of May 2015. To comply with federal requirements, any percentage rates greater than or equal to 95.0% or less than or equal to 5.0% will be noted as ≥95.0 or ≤5.0, respectively, and the number of students who took AP exams and the number of students with at least a score of 3 or higher will not be reported (--). Additionally, results are not reported (-) for groups with fewer than 10 test takers. For groups of between 10 and 20 test takers, only the percentage rate will be reported.

Table A3b

Number of Students Who Took One or More Advanced Placement Exams and Number and Percentage of Test Takers Who Earned One or More Advanced Placement Exam Scores of 3 or Higher in 2014 and 2015 by High School and Race/Ethnicity

High School	Hispanic/Latino						White						Two or More Races					
	N		N Scored 3 or Higher		% Scored 3 or Higher		N		N Scored 3 or Higher		% Scored 3 or Higher		N		N Scored 3 or Higher		% Scored 3 or Higher	
	2014	2015	2014	2015	2014	2015	2014	2015	2014	2015	2014	2015	2014	2015	2014	2015	2014	2015
All	2,484	2,480	1,567	1,586	63.1	64.0	7,825	7,669	6,486	6,325	82.9	82.5	738	794	580	639	78.6	80.5
Bethesda-Chevy Chase	83	90	62	68	74.7	75.6	572	612	486	539	85.0	88.1	46	53	41	48	89.1	90.6
Montgomery Blair	103	102	84	85	81.6	83.3	372	363	347	344	93.3	94.8	52	47	48	42	92.3	89.4
James Hubert Blake	104	86	63	60	60.6	69.8	200	167	164	139	82.0	83.2	24	30	17	23	70.8	76.7
Winston Churchill	88	99	71	82	80.7	82.8	714	693	626	615	87.7	88.7	50	52	42	49	84.0	94.2
Clarksburg	90	98	53	61	58.9	62.2	191	181	154	134	80.6	74.0	--	25	--	18	87.5	72.0
Damascus	58	51	36	35	62.1	68.6	359	318	265	222	73.8	69.8	--	--	--	--	61.1	50.0
Albert Einstein	153	131	89	91	58.2	69.5	205	176	172	151	83.9	85.8	--	--	--	--	73.3	71.4
Gaithersburg	128	144	86	94	67.2	65.3	139	131	90	87	64.7	66.4	--	--	--	--	--	47.1
Walter Johnson	142	152	115	124	81.0	81.6	754	728	695	665	92.2	91.3	60	76	54	68	90.0	89.5
John F. Kennedy	121	119	44	37	36.4	31.1	25	23	12	11	48.0	47.8	--	--	--	--	--	--
Col. Zadok Magruder	101	93	72	72	71.3	77.4	190	187	152	149	80.0	79.7	--	26	--	19	80.0	73.1
Richard Montgomery	144	156	106	123	73.6	78.8	324	354	290	303	89.5	85.6	57	51	48	47	84.2	92.2
Northwest	120	116	61	56	50.8	48.3	290	316	203	221	70.0	69.9	38	44	23	30	60.5	68.2
Northwood	118	115	71	62	60.2	53.9	105	94	67	58	63.8	61.7	--	--	--	--	50.0	60.0
Paint Branch	50	61	32	40	64.0	65.6	91	75	70	60	76.9	80.0	--	21	--	15	88.9	71.4
Poolesville	47	39	41	31	87.2	79.5	373	380	328	317	87.9	83.4	31	40	27	36	87.1	90.0
Quince Orchard	122	144	63	71	51.6	49.3	578	569	403	374	69.7	65.7	37	41	23	27	62.2	65.9
Rockville	100	62	66	32	66.0	51.6	198	166	141	122	71.2	73.5	--	23	--	15	71.4	65.2
Seneca Valley	51	34	19	11	37.3	32.4	91	86	42	46	46.2	53.5	--	--	--	--	20.0	61.1
Sherwood	72	79	61	55	84.7	69.6	485	495	408	396	84.1	80.0	28	31	23	25	82.1	80.6
Springbrook	86	100	39	49	45.3	49.0	81	77	54	49	66.7	63.6	25	21	8	16	32.0	76.2
Watkins Mill	84	114	39	52	46.4	45.6	53	53	31	28	58.5	52.8	--	--	--	--	46.2	--
Wheaton	179	164	73	80	40.8	48.8	60	64	44	50	73.3	78.1	--	--	--	--	84.6	72.2
Walt Whitman	77	81	69	68	89.6	84.0	799	818	737	753	92.2	92.1	57	66	50	62	87.7	93.9
Thomas S. Wootton	63	50	52	47	82.5	94.0	576	543	505	492	87.7	90.6	--	42	--	39	≥95.0	92.9

Note. AP = Advanced Placement. Results for MCPS American Indian or Alaskan Native and Native Hawaiian or Other Pacific Islander students are included with all students but are not reported separately. AP exam results are based on data reported by the College Board as of May 2015. To comply with federal requirements, any percentage rates greater than or equal to 95.0% or less than or equal to 5.0% will be noted as  $\geq 95.0$  or  $\leq 5.0$ , respectively, and the number of students who took AP exams and the number of students with at least a score of 3 or higher will not be reported (--). Additionally, results are not reported (-) for groups with fewer than 10 test takers. For groups of between 10 and 20 test takers, only the percentage rate will be reported.

Table A4a  
 Number of Students Who Took One or More Advanced Placement Exams and Number and Percentage of Test Takers  
 Who Earned One or More Advanced Placement Exam Scores of 3 or Higher in 2014 and 2015 by High School and Gender

High School	Male						Female					
	N Took AP Exam		N Scored 3 or Higher		% Scored 3 or Higher		N Took AP Exam		N Scored 3 or Higher		% Scored 3 or Higher	
	2014	2015	2014	2015	2014	2015	2014	2015	2014	2015	2014	2015
All	7,786	7,732	5,980	5,921	76.8	76.6	9,269	9,276	6,801	6,871	73.4	74.1
Bethesda-Chevy Chase	391	435	320	361	81.8	83.0	443	441	356	366	80.4	83.0
Montgomery Blair	454	428	401	385	88.3	90.0	465	463	402	407	86.5	87.9
James Hubert Blake	235	191	155	134	66.0	70.2	380	333	242	250	63.7	75.1
Winston Churchill	598	581	515	523	86.1	90.0	658	663	573	586	87.1	88.4
Clarksburg	266	257	197	193	74.1	75.1	338	364	231	237	68.3	65.1
Damascus	232	210	171	152	73.7	72.4	259	239	179	161	69.1	67.4
Albert Einstein	190	166	130	117	68.4	70.5	341	334	229	232	67.2	69.5
Gaithersburg	192	190	118	121	61.5	63.7	227	257	141	156	62.1	60.7
Walter Johnson	589	565	525	499	89.1	88.3	612	609	542	540	88.6	88.7
John F. Kennedy	124	122	46	42	37.1	34.4	211	221	76	62	36.0	28.1
Col. Zadok Magruder	214	211	165	158	77.1	74.9	257	239	191	180	74.3	75.3
Richard Montgomery	437	456	375	382	85.8	83.8	524	561	444	461	84.7	82.2
Northwest	352	375	219	234	62.2	62.4	475	489	277	302	58.3	61.8
Northwood	146	127	90	77	61.6	60.6	200	214	97	97	48.5	45.3
Paint Branch	226	252	154	180	68.1	71.4	304	291	189	186	62.2	63.9
Poolesville	349	381	324	332	92.8	87.1	366	367	317	329	86.6	89.6
Quince Orchard	461	460	289	280	62.7	60.9	511	543	343	322	67.1	59.3
Rockville	171	152	122	99	71.3	65.1	239	179	156	113	65.3	63.1
Seneca Valley	105	83	48	34	45.7	41.0	175	150	61	90	34.9	60.0
Sherwood	335	358	279	276	83.3	77.1	444	469	363	364	81.8	77.6
Springbrook	233	234	115	129	49.4	55.1	248	244	108	122	43.5	50.0
Watkins Mill	102	141	48	56	47.1	39.7	147	140	65	56	44.2	40.0
Wheaton	232	243	128	134	55.2	55.1	214	234	112	134	52.3	57.3
Walt Whitman	522	524	483	486	92.5	92.7	564	600	516	543	91.5	90.5
Thomas S. Wootton	630	590	563	537	89.4	91.0	667	632	591	575	88.6	91.0

Note. AP = Advanced Placement. AP exam results are based on data reported by the College Board as of May 2015.

Table A4b  
 Number of Students Who Took One or More Advanced Placement Exams and Number and Percentage of Test Takers  
 Who Earned One or More Advanced Placement Exam Scores of 3 or Higher in 2014 and 2015 by High School and Service Group

High School	FARMS						Special Education						LEP					
	N Took AP Exam		N Scored 3 or Higher		% Scored 3 or Higher		N Took AP Exam		N Scored 3 or Higher		% Scored 3 or Higher		N Took AP Exam		N Scored 3 or Higher		% Scored 3 or Higher	
	2014	2015	2014	2015	2014	2015	2014	2015	2014	2015	2014	2015	2014	2015	2014	2015	2014	2015
All	2,315	2,361	1,248	1,247	53.9	52.8	384	324	221	202	57.6	62.3	502	461	361	334	71.9	72.5
Bethesda-Chevy Chase	34	39	17	20	50.0	51.3	25	24	12	20	48.0	83.3	--	--	--	--	45.5	60.0
Montgomery Blair	132	148	86	106	65.2	71.6	--	--	--	--	55.6	80.0	23	--	20	--	87.0	90.0
James Hubert Blake	137	99	68	64	49.6	64.6	--	--	--	--	--	--	--	--	--	--	80.0	--
Winston Churchill	24	24	14	15	58.3	62.5	39	35	18	22	46.2	62.9	--	--	--	--	70.0	--
Clarksburg	95	85	62	46	65.3	54.1	--	--	--	--	--	--	--	--	--	--	58.3	90.9
Damascus	28	33	17	25	60.7	75.8	--	--	--	--	45.5	--	--	--	--	--	--	--
Albert Einstein	156	142	96	88	61.5	62.0	--	--	--	--	55.0	--	27	--	20	--	74.1	75.0
Gaithersburg	123	137	86	82	69.9	59.9	--	--	--	--	--	--	34	55	28	40	82.4	72.7
Walter Johnson	43	43	36	35	83.7	81.4	40	38	33	30	82.5	78.9	56	40	47	33	83.9	82.5
John F. Kennedy	158	170	48	42	30.4	24.7	--	--	--	--	--	--	21	21	11	7	52.4	33.3
Col. Zadok Magruder	85	79	59	57	69.4	72.2	--	--	--	--	--	--	--	--	--	--	≥95.0	92.3
Richard Montgomery	104	116	64	73	61.5	62.9	--	--	--	--	71.4	72.2	27	21	20	17	74.1	81.0
Northwest	136	136	57	60	41.9	44.1	--	--	--	--	52.6	50.0	--	--	--	--	--	--
Northwood	107	107	53	42	49.5	39.3	--	--	--	--	47.4	--	26	22	18	12	69.2	54.5
Paint Branch	114	130	63	79	55.3	60.8	--	--	--	--	--	--	--	--	--	--	--	--
Poolesville	28	32	22	25	78.6	78.1	--	--	--	--	92.3	68.8	--	--	--	--	--	--
Quince Orchard	117	149	60	66	51.3	44.3	28	27	9	7	32.1	25.9	--	21	--	16	47.4	76.2
Rockville	91	60	53	26	58.2	43.3	21	--	9	--	42.9	42.9	--	--	--	--	76.5	--
Seneca Valley	57	38	16	15	28.1	39.5	--	--	--	--	--	--	--	--	--	--	--	--
Sherwood	61	65	45	37	73.8	56.9	--	--	--	--	--	33.3	40	31	30	21	75.0	67.7
Springbrook	134	157	52	68	38.8	43.3	--	--	--	--	--	--	--	--	--	--	36.4	23.1
Watkins Mill	97	125	40	47	41.2	37.6	--	--	--	--	--	--	--	33	--	26	50.0	78.8
Wheaton	212	202	101	89	47.6	44.1	--	--	--	--	63.6	40.0	43	29	28	18	65.1	62.1
Walt Whitman	--	--	--	--	90.0	--	45	40	35	33	77.8	82.5	42	--	38	--	90.5	≥95.0
Thomas S. Wootton	32	36	24	32	75.0	88.9	--	--	--	--	36.8	50.0	--	--	--	--	88.9	92.3

Note. AP = Advanced Placement. FARMS = Free and Reduced-price Meals System; ESOL = English for Speakers of Other Languages. AP exam results are based on data reported by the College Board as of May 2015. To comply with federal requirements, any percentage rates greater than or equal to 95.0% or less than or equal to 5.0% will be noted as ≥95.0 or ≤5.0, respectively, and the number of students who took AP exams and the number of students with at least a score of 3 or higher will not be reported (--). Additionally, results are not reported (--) for groups with fewer than 10 test takers. For groups of between 10 and 20 test takers, only the percentage rate will be reported.

Table A5  
Number and Percentage of MCPS Students Who Took Advanced Placement Exams by Number of Advanced Placement Exams Taken,  
Race/Ethnicity and Advanced Placement Exam Year

Student Group	AP Exam Year	N Took Any AP Exams	AP Exam(s)									
			N Took One	N Took Two	N Took Three	N Took Four	N Took Five or More	% Took One	% Took Two	% Took Three	% Took Four	% Took Five or More
All	2012	16,797	8,066	3,948	2,835	1,388	--	48.0	23.5	16.9	8.3	≤5.0
	2013	17,009	8,221	3,867	2,866	1,422	--	48.3	22.7	16.8	8.4	≤5.0
	2014	17,055	8,265	3,917	2,842	1,361	--	48.5	23.0	16.7	8.0	≤5.0
	2015	17,008	8,334	3,817	2,730	1,437	--	49.0	22.4	16.1	8.4	≤5.0
Asian	2012	3,723	1,543	774	684	478	244	41.4	20.8	18.4	12.8	6.6
	2013	3,801	1,572	771	684	474	300	41.4	20.3	18.0	12.5	7.9
	2014	3,791	1,471	830	719	456	315	38.8	21.9	19.0	12.0	8.3
	2015	3,778	1,592	767	628	473	318	42.1	20.3	16.6	12.5	8.4
Black or African American	2012	1,907	1,122	469	235	--	--	58.8	24.6	12.3	≤5.0	≤5.0
	2013	2,060	1,274	446	247	--	--	61.8	21.7	12.0	≤5.0	≤5.0
	2014	2,192	1,302	538	241	--	--	59.4	24.5	11.0	≤5.0	≤5.0
	2015	2,264	1,312	552	275	--	--	58.0	24.4	12.1	≤5.0	≤5.0
Hispanic/Latino	2012	2,357	1,352	547	310	--	--	57.4	23.2	13.2	≤5.0	≤5.0
	2013	2,480	1,394	595	336	--	--	56.2	24.0	13.5	≤5.0	≤5.0
	2014	2,484	1,371	636	327	--	--	55.2	25.6	13.2	≤5.0	≤5.0
	2015	2,480	1,412	601	305	--	--	56.9	24.2	12.3	≤5.0	≤5.0
White	2012	8,045	3,693	1,964	1,493	664	--	45.9	24.4	18.6	8.3	≤5.0
	2013	7,867	3,618	1,880	1,446	672	--	46.0	23.9	18.4	8.5	≤5.0
	2014	7,825	3,736	1,749	1,426	652	--	47.7	22.4	18.2	8.3	≤5.0
	2015	7,669	3,607	1,709	1,389	699	--	47.0	22.3	18.1	9.1	≤5.0
Two or More Races	2012	738	346	184	108	71	--	46.9	24.9	14.6	9.6	≤5.0
	2013	771	348	166	149	76	--	45.1	21.5	19.3	9.9	≤5.0
	2014	738	374	159	123	57	--	50.7	21.5	16.7	7.7	≤5.0
	2015	794	399	183	129	57	--	50.3	23.0	16.2	7.2	≤5.0

*Note.* AP = Advanced Placement. Results for MCPS American Indian or Alaskan Native and Native Hawaiian or Other Pacific Islander students are included with all students but are not reported separately. AP exam results are based on data reported by the College Board as of May 2015. To comply with federal requirements, any percentage rates greater than or equal to 95.0% or less than or equal to 5.0% will be noted as ≥95.0 or ≤5.0, respectively, and the number of students who took AP exams and the number of students with at least a score of 3 or higher will not be reported (--). Additionally, results are not reported (--) for groups with fewer than 10 test takers. For groups of between 10 and 20 test takers, only the percentage rate will be reported.

Table A6  
Number and Percentage of MCPS Students Who Took Advanced Placement Exams in 2015 by  
Number of Advanced Placement Exams Taken by High School

High School	N Took Any AP Exams	AP Exam(s)									
		N Took One	N Took Two	N Took Three	N Took Four	N Took Five or More	% Took One	% Took Two	% Took Three	% Took Four	% Took Five or More
All	17,008	8,334	3,817	2,730	1,437	--	49.0	22.4	16.1	8.4	≤5.0
Bethesda-Chevy Chase	876	483	158	129	63	--	55.1	18.0	14.7	7.2	≤5.0
Montgomery Blair	891	325	230	155	97	84	36.5	25.8	17.4	10.9	9.4
James Hubert Blake	524	260	119	91	44	--	49.6	22.7	17.4	8.4	≤5.0
Winston Churchill	1,244	471	279	229	171	94	37.9	22.4	18.4	13.7	7.6
Clarksburg	621	334	127	101	49	--	53.8	20.5	16.3	7.9	≤5.0
Damascus	449	170	135	93	43	--	37.9	30.1	20.7	9.6	≤5.0
Albert Einstein	500	241	128	68	48	--	48.2	25.6	13.6	9.6	≤5.0
Gaithersburg	447	294	97	45	--	--	65.8	21.7	10.1	≤5.0	≤5.0
Walter Johnson	1,174	513	255	226	125	--	43.7	21.7	19.3	10.6	≤5.0
John F. Kennedy	343	253	67	22	--	--	73.8	19.5	6.4	≤5.0	≤5.0
Col. Zadok Magruder	450	250	112	63	--	--	55.6	24.9	14.0	≤5.0	≤5.0
Richard Montgomery	1,017	451	224	177	94	71	44.3	22.0	17.4	9.2	7.0
Northwest	864	401	172	173	103	--	46.4	19.9	20.0	11.9	≤5.0
Northwood	341	195	86	56	--	--	57.2	25.2	16.4	≤5.0	≤5.0
Paint Branch	543	259	160	87	29	--	47.7	29.5	16.0	5.3	≤5.0
Poolesville	748	227	155	146	125	95	30.3	20.7	19.5	16.7	12.7
Quince Orchard	1,003	477	214	167	96	--	47.6	21.3	16.7	9.6	≤5.0
Rockville	331	190	75	52	--	--	57.4	22.7	15.7	≤5.0	≤5.0
Seneca Valley	233	193	37	--	--	--	82.8	15.9	≤5.0	≤5.0	≤5.0
Sherwood	827	423	179	128	70	--	51.1	21.6	15.5	8.5	≤5.0
Springbrook	478	314	88	55	--	--	65.7	18.4	11.5	≤5.0	≤5.0
Watkins Mill	281	241	38	--	--	--	85.8	13.5	≤5.0	≤5.0	≤5.0
Wheaton	477	266	128	59	--	--	55.8	26.8	12.4	≤5.0	≤5.0
Walt Whitman	1,124	550	245	194	91	--	48.9	21.8	17.3	8.1	≤5.0
Thomas S. Wootton	1,222	553	309	211	103	--	45.3	25.3	17.3	8.4	≤5.0

Note. AP = Advanced Placement. AP exam results are based on data reported by the College Board as of May 2015. To comply with federal requirements, any percentage rates greater than or equal to 95.0% or less than or equal to 5.0% will be noted as ≥95.0 or ≤5.0, respectively, and the number of students who took AP exams and the number of students with at least a score of 3 or higher will not be reported (--). Additionally, results are not reported (--) for groups with fewer than 10 test takers. For groups of between 10 and 20 test takers, only the percentage rate will be reported.

Table B1  
2015 Advanced Placement Exam Results for MCPS, Maryland, and the Nation:  
Number of Exams Taken and Percentage of Exam Scores of 1, 2, 3, 4, and 5 for the 20 Most Frequently Taken Advanced Placement Exams by Subject Area

AP Exam by Subject Area	MCPS						Maryland (Public Schools) <sup>a</sup>						Nation (Public Schools) <sup>a</sup>					
	N Exams	% of Exam Scores 1, 2, 3, 4, or 5					N Exams	% of Exam Scores 1, 2, 3, 4 or 5					N Exams	% of Exam Scores 1, 2, 3, 4, or 5				
		1	2	3	4	5		1	2	3	4	5		1	2	3	4	5
<b>English</b>																		
English Language & Composition	3,838	7.4	21.7	27.6	26.1	17.2	13,637	14.1	27.6	27.2	20.2	10.8	465,214	15.9	30.9	27.0	17.4	8.8
English Literature & Composition	2,608	7.2	27.1	29.7	24.9	11.1	9,282	13.0	32.2	28.4	18.9	7.6	340,063	12.3	34.3	29.9	16.8	6.7
<b>Mathematics</b>																		
Calculus AB	1,723	18.9	8.3	19.3	23.5	30.0	6,729	26.6	10.2	20.2	18.7	24.4	246,062	33.8	10.5	18.7	16.7	20.3
Calculus BC	1,241	6.5	≤5.0	17.1	18.6	53.8	3,766	13.0	5.4	18.0	17.6	46.0	91,186	15.0	5.6	18.9	16.8	43.7
Statistics	1,630	17.7	13.2	23.1	22.9	23.2	5,393	23.7	17.0	25.0	19.7	14.6	167,843	24.7	19.0	25.1	18.6	12.6
<b>Science</b>																		
Biology	1,204	≤5.0	12.8	36.4	36.0	12.5	4,695	9.6	26.3	35.1	22.1	7.0	188,974	8.8	28.6	35.6	21.0	5.9
Chemistry	871	5.6	13.7	30.9	27.1	22.7	2,850	19.9	21.5	28.2	18.4	12.0	123,957	23.6	25.6	27.6	15.0	8.2
Environmental Science	1,200	16.0	23.6	15.3	31.3	13.8	3,867	23.6	24.3	14.9	26.7	10.5	122,955	28.5	25.4	14.9	23.7	7.5
Physics 1	414	16.9	27.5	25.6	21.3	8.7	2,930	31.7	30.5	20.6	12.8	4.4	144,957	33.1	30.4	20.1	12.5	4.0
Physics C: Mechanics	552	7.1	10.5	18.1	27.2	37.1	1,691	15.0	12.8	19.5	25.5	27.2	39,772	11.2	12.4	20.8	28.5	27.1
<b>Social Studies</b>																		
Microeconomics	619	10.3	12.8	17.6	31.3	27.9	1,909	17.0	14.2	19.0	29.2	20.6	57,255	20.3	14.5	20.0	28.2	17.0
Macroeconomics	613	9.5	17.5	19.2	26.3	27.6	1,727	18.0	17.5	19.9	24.8	19.7	104,091	30.7	17.6	17.2	21.4	13.1
U.S. Government & Politics	4,521	9.9	17.7	27.3	21.1	23.9	10,879	20.1	21.5	26.0	16.5	15.9	249,889	28.0	24.9	24.3	13.2	9.5
European History	422	16.8	6.4	30.6	27.3	19.0	1,032	15.0	6.8	34.3	27.0	16.9	89,319	28.2	11.0	35.1	16.4	9.3
U.S. History	1,665	10.0	21.6	25.4	23.2	19.8	6,174	21.5	26.5	24.4	17.0	10.6	408,195	25.7	25.5	23.3	17.0	8.5
World History	3,011	5.7	20.3	35.9	24.0	14.0	9,087	14.5	25.8	33.5	17.4	8.8	241,557	18.9	30.4	31.0	13.6	6.1
Human Geography	647	13.3	11.9	18.4	31.5	24.9	2,630	23.3	13.8	19.8	25.9	17.2	149,427	30.2	16.8	21.0	20.2	11.7
Psychology	3,230	15.2	10.6	17.9	27.8	28.5	10,393	23.0	12.9	19.0	25.1	20.0	245,025	21.2	13.2	19.8	26.0	19.7
<b>Technology</b>																		
Computer Science A	612	18.5	5.9	12.4	24.8	38.4	1,568	27.2	7.2	15.3	25.8	24.5	39,663	29.5	7.2	15.4	24.4	23.6
<b>Foreign Language</b>																		
Spanish Language	1,059	≤5.0	5.6	22.7	35.4	36.2	2,139	1.0	10.1	28.8	32.8	27.3	126,893	1.3	9.0	28.2	35.4	26.1

Note. AP = Advanced Placement. Sum of percentages calculated from unrounded values may vary by ±0.1 points from rounded percentages. To comply with federal requirements, any percentage rates greater than or equal to 95.0% or less than or equal to 5.0% will be noted as ≥95.0 or ≤5.0, respectively.

<sup>a</sup> AP exam results for Maryland and the nation are based on May 2015 exam data reported by the College Board.

**Table B2**  
**Advanced Placement Exam Results for MCPS: Number of Exams Taken and Number and Percentage of Exam Scores of 3 or Higher for the 20 Most Frequently Taken Advanced Placement Exams by Subject Area, Year, and Race/Ethnicity**

AP Exam by Subject Area	Year	All			Asian			Black or African American			Hispanic/Latino			White			Two or More Races		
		N AP Exams Taken	N AP Exams 3 or Higher	% AP Exams 3 or Higher	N AP Exams Taken	N AP Exams 3 or Higher	% AP Exams 3 or Higher	N AP Exams Taken	N AP Exams 3 or Higher	% AP Exams 3 or Higher	N AP Exams Taken	N AP Exams 3 or Higher	% AP Exams 3 or Higher	N AP Exams Taken	N AP Exams 3 or Higher	% AP Exams 3 or Higher	N AP Exams Taken	N AP Exams 3 or Higher	% AP Exams 3 or Higher
<b>English</b>																			
English Language & Composition	2012	3,634	2,678	73.7	809	631	78.0	408	203	49.8	405	208	51.4	1,811	1,487	82.1	192	143	74.5
	2013	3,781	2,502	66.2	852	617	72.4	438	173	39.5	486	201	41.4	1,830	1,381	75.5	170	126	74.1
	2014	3,701	2,488	67.2	869	624	71.8	462	213	46.1	476	198	41.6	1,734	1,331	76.8	153	117	76.5
	2015	3,838	2,721	70.9	857	660	77.0	489	227	46.4	462	205	44.4	1,831	1,472	80.4	193	154	79.8
English Literature & Composition	2012	2,796	1,958	70.0	618	459	74.3	314	127	40.4	315	151	47.9	1,427	1,123	78.7	117	94	80.3
	2013	2,767	1,939	70.1	635	481	75.7	310	146	47.1	290	130	44.8	1,365	1,063	77.9	160	113	70.6
	2014	2,780	1,849	66.5	625	451	72.2	313	127	40.6	324	138	42.6	1,383	1,031	74.5	131	99	75.6
	2015	2,608	1,713	65.7	585	412	70.4	308	137	44.5	307	129	42.0	1,304	963	73.8	98	67	68.4
<b>Mathematics</b>																			
Calculus AB	2012	1,695	1,333	78.6	433	342	79.0	142	77	54.2	164	105	64.0	876	740	84.5	79	69	87.3
	2013	1,668	1,247	74.8	438	329	75.1	140	68	48.6	181	100	55.2	827	684	82.7	79	64	81.0
	2014	1,719	1,255	73.0	474	347	73.2	178	86	48.3	185	106	57.3	806	657	81.5	71	56	78.9
	2015	1,723	1,255	72.8	463	330	71.3	202	91	45.0	186	101	54.3	781	656	84.0	90	76	84.4
Calculus BC	2012	1,078	986	91.5	457	418	91.5	53	41	77.4	61	51	83.6	452	424	93.8	54	51	94.4
	2013	1,176	1,053	89.5	510	463	90.8	44	31	70.5	68	51	75.0	489	448	91.6	63	58	92.1
	2014	1,241	1,136	91.5	497	456	91.8	54	46	85.2	76	60	78.9	560	524	93.6	53	49	92.5
	2015	1,241	1,111	89.5	523	476	91.0	72	55	76.4	86	61	70.9	500	464	92.8	60	55	91.7
Statistics	2012	1,389	985	70.9	430	350	81.4	124	37	29.8	122	50	41.0	659	505	76.6	51	40	78.4
	2013	1,567	1,105	70.5	487	384	78.9	121	41	33.9	143	58	40.6	742	561	75.6	72	59	81.9
	2014	1,594	1,153	72.3	517	424	82.0	129	39	30.2	181	86	47.5	694	543	78.2	70	60	85.7
	2015	1,630	1,127	69.1	538	410	76.2	181	74	40.9	177	68	38.4	658	520	79.0	71	52	73.2
<b>Science</b>																			
Biology	2012	1,547	1,083	70.0	549	412	75.0	164	73	44.5	138	66	47.8	621	481	77.5	71	48	67.6
	2013	1,502	1,183	78.8	533	434	81.4	155	85	54.8	144	91	63.2	603	516	85.6	65	56	86.2
	2014	1,285	1,081	84.1	513	449	87.5	153	95	62.1	97	67	69.1	474	427	90.1	46	41	89.1
	2015	1,204	1,021	84.8	447	399	89.3	176	112	63.6	98	65	66.3	439	403	91.8	--	--	≥95.0

Continued



**Table B2**  
**Advanced Placement Exam Results for MCPS: Number of Exams Taken and Number and Percentage of Exam Scores of 3 or Higher for the 20 Most Frequently Taken Advanced Placement Exams by Subject Area, Year, and Race/Ethnicity**

AP Exam by Subject Area	Year	All			Asian			Black or African American			Hispanic/Latino			White			Two or More Races		
		N AP Exams Taken	N AP Exams 3 or Higher	% AP Exams 3 or Higher	N AP Exams Taken	N AP Exams 3 or Higher	% AP Exams 3 or Higher	N AP Exams Taken	N AP Exams 3 or Higher	% AP Exams 3 or Higher	N AP Exams Taken	N AP Exams 3 or Higher	% AP Exams 3 or Higher	N AP Exams Taken	N AP Exams 3 or Higher	% AP Exams 3 or Higher	N AP Exams Taken	N AP Exams 3 or Higher	% AP Exams 3 or Higher
Chemistry	2012	841	687	81.7	350	298	85.1	60	33	55.0	57	31	54.4	340	298	87.6	33	27	81.8
	2013	910	771	84.7	417	360	86.3	69	41	59.4	61	44	72.1	320	287	89.7	42	38	90.5
	2014	915	715	78.1	378	294	77.8	76	51	67.1	70	39	55.7	358	300	83.8	33	31	93.9
	2015	871	703	80.7	376	306	81.4	86	51	59.3	65	41	63.1	309	274	88.7	35	31	88.6
Environmental Science	2012	1,321	821	62.1	225	141	62.7	110	37	33.6	147	66	44.9	787	545	69.3	49	31	63.3
	2013	1,327	760	57.3	245	150	61.2	113	25	22.1	156	56	35.9	745	486	65.2	66	42	63.6
	2014	1,127	693	61.5	219	139	63.5	91	25	27.5	150	58	38.7	624	446	71.5	42	25	59.5
	2015	1,200	725	60.4	212	133	62.7	125	39	31.2	142	55	38.7	666	459	68.9	52	37	71.2
Physics 1	2012	--	--	--	--	--	--	--	--	--	--	--	--	--	--	--	--	--	--
	2013	--	--	--	--	--	--	--	--	--	--	--	--	--	--	--	--	--	--
	2014	--	--	--	--	--	--	--	--	--	--	--	--	--	--	--	--	--	--
	2015	414	230	55.6	121	56	46.3	40	--	15.0	36	--	38.9	195	140	71.8	22	--	63.6
Physics C: Mechanics	2012	500	379	75.8	207	160	77.3	32	--	43.8	21	--	61.9	211	168	79.6	26	23	88.5
	2013	547	425	77.7	186	154	82.8	33	--	45.5	27	--	55.6	272	216	79.4	29	25	86.2
	2014	566	467	82.5	214	179	83.6	31	--	54.8	38	24	63.2	251	218	86.9	32	29	90.6
	2015	552	455	82.4	213	180	84.5	27	--	74.1	34	--	47.1	256	218	85.2	--	--	≥95.0
<b>Social Studies</b>																			
Microeconomics	2012	531	439	82.7	194	165	85.1	--	--	66.7	43	29	67.4	257	218	84.8	--	--	78.9
	2013	594	494	83.2	227	200	88.1	--	--	50.0	53	31	58.5	269	230	85.5	27	24	88.9
	2014	590	500	84.7	241	213	88.4	34	--	55.9	38	22	57.9	260	232	89.2	--	--	87.5
	2015	619	476	76.9	214	181	84.6	38	--	36.8	40	24	60.0	296	232	78.4	31	25	80.6
Macroeconomics	2012	544	403	74.1	206	159	77.2	--	--	57.9	45	25	55.6	256	196	76.6	--	--	66.7
	2013	667	505	75.7	256	206	80.5	32	--	40.6	56	32	57.1	293	229	78.2	30	25	83.3
	2014	627	479	76.4	255	200	78.4	35	21	60.0	41	22	53.7	277	221	79.8	--	--	83.3
	2015	613	448	73.1	236	191	80.9	28	--	42.9	30	21	70.0	288	202	70.1	31	22	71.0
U.S. Government & Politics	2012	4,234	3,218	76.0	1,050	781	74.4	417	235	56.4	449	261	58.1	2,118	1,786	84.3	195	153	78.5
	2013	4,088	2,949	72.1	1,020	759	74.4	481	246	51.1	440	232	52.7	1,967	1,572	79.9	170	131	77.1
	2014	4,287	3,061	71.4	972	706	72.6	524	235	44.8	410	207	50.5	2,143	1,739	81.1	230	172	74.8
	2015	4,521	3,270	72.3	1,076	816	75.8	550	295	53.6	503	273	54.3	2,146	1,697	79.1	240	186	77.5

Continued

**Table B2**  
**Advanced Placement Exam Results for MCPS: Number of Exams Taken and Number and Percentage of Exam Scores of 3 or Higher for the 20 Most Frequently Taken Advanced Placement Exams by Subject Area, Year, and Race/Ethnicity**

AP Exam by Subject Area	Year	All			Asian			Black or African American			Hispanic/Latino			White			Two or More Races		
		N AP Exams Taken	N AP Exams 3 or Higher	% AP Exams 3 or Higher	N AP Exams Taken	N AP Exams 3 or Higher	% AP Exams 3 or Higher	N AP Exams Taken	N AP Exams 3 or Higher	% AP Exams 3 or Higher	N AP Exams Taken	N AP Exams 3 or Higher	% AP Exams 3 or Higher	N AP Exams Taken	N AP Exams 3 or Higher	% AP Exams 3 or Higher	N AP Exams Taken	N AP Exams 3 or Higher	% AP Exams 3 or Higher
European History	2012	477	388	81.3	93	79	84.9	29	--	55.2	40	27	67.5	293	247	84.3	--	--	90.0
	2013	420	317	75.5	88	71	80.7	28	--	53.6	50	25	50.0	238	192	80.7	--	--	87.5
	2014	494	369	74.7	91	74	81.3	38	--	47.4	47	24	51.1	295	237	80.3	23	--	69.6
	2015	422	324	76.8	87	70	80.5	22	--	40.9	51	23	45.1	241	207	85.9	21	--	71.4
U.S. History	2012	1,379	958	69.5	369	281	76.2	167	70	41.9	160	81	50.6	614	475	77.4	67	50	74.6
	2013	1,685	1,177	69.9	380	292	76.8	233	102	43.8	161	81	50.3	816	628	77.0	92	73	79.3
	2014	1,761	1,224	69.5	444	323	72.7	228	122	53.5	199	92	46.2	809	637	78.7	79	50	63.3
	2015	1,665	1,140	68.5	429	326	76.0	226	103	45.6	169	81	47.9	750	558	74.4	90	71	78.9
World History	2012	2,979	2,252	75.6	656	514	78.4	370	210	56.8	337	192	57.0	1,449	1,206	83.2	163	128	78.5
	2013	3,049	2,071	67.9	729	537	73.7	395	167	42.3	417	191	45.8	1,380	1,082	78.4	124	92	74.2
	2014	2,974	2,246	75.5	708	555	78.4	432	244	56.5	390	222	56.9	1,314	1,117	85.0	124	104	83.9
	2015	3,011	2,228	74.0	679	542	79.8	445	244	54.8	356	188	52.8	1,388	1,143	82.3	136	108	79.4
Human Geography	2012	686	537	78.3	131	105	80.2	67	39	58.2	72	44	61.1	396	334	84.3	--	--	75.0
	2013	539	420	77.9	97	74	76.3	36	--	55.6	69	40	58.0	312	264	84.6	25	22	88.0
	2014	617	431	69.9	103	79	76.7	55	30	54.5	97	50	51.5	340	253	74.4	--	--	85.0
	2015	647	484	74.8	89	58	65.2	68	43	63.2	88	56	63.6	376	306	81.4	25	21	84.0
Psychology	2012	3,514	2,579	73.4	695	537	77.3	393	228	58.0	463	240	51.8	1,804	1,461	81.0	152	110	72.4
	2013	3,464	2,521	72.8	687	531	77.3	412	200	48.5	499	260	52.1	1,676	1,385	82.6	182	141	77.5
	2014	3,449	2,429	70.4	756	588	77.8	492	226	45.9	514	249	48.4	1,564	1,272	81.3	117	91	77.8
	2015	3,230	2,397	74.2	665	527	79.2	459	253	55.1	497	269	54.1	1,484	1,244	83.8	123	102	82.9
<b>Technology</b>																			
Computer Science A	2012	504	379	75.2	214	180	84.1	38	--	47.4	37	21	56.8	192	146	76.0	23	--	60.9
	2013	521	437	83.9	217	190	87.6	31	--	45.2	38	23	60.5	200	175	87.5	--	--	≥95.0
	2014	533	393	73.7	235	192	81.7	42	--	40.5	32	--	46.9	197	152	77.2	27	--	63.0
	2015	612	463	75.7	241	203	84.2	34	--	38.2	46	--	41.3	255	197	77.3	36	31	86.1

Continued

Table B2  
Advanced Placement Exam Results for MCPS: Number of Exams Taken and Number and Percentage of Exam Scores of 3 or Higher for the 20 Most Frequently Taken Advanced Placement Exams by Subject Area, Year, and Race/Ethnicity

AP Exam by Subject Area	Year	All			Asian			Black or African American			Hispanic/Latino			White			Two or More Races		
		<i>N</i> AP Exam s Taken	<i>N</i> AP Exam s 3 or Higher	% AP Exam s 3 or Higher	<i>N</i> AP Exam s Taken	<i>N</i> AP Exam s 3 or Higher	% AP Exam s 3 or Higher	<i>N</i> AP Exam s Taken	<i>N</i> AP Exam s 3 or Higher	% AP Exam s 3 or Higher	<i>N</i> AP Exam s Taken	<i>N</i> AP Exam s 3 or Higher	% AP Exam s 3 or Higher	<i>N</i> AP Exam s Taken	<i>N</i> AP Exam s 3 or Higher	% AP Exam s 3 or Higher	<i>N</i> AP Exam s Taken	<i>N</i> AP Exam s 3 or Higher	% AP Exam s 3 or Higher
<b>Foreign Language</b>	2012	1,044	838	80.3	107	81	75.7	41	24	58.5	605	512	84.6	263	203	77.2	27	--	63.0
Spanish	2013	1,061	826	77.9	128	90	70.3	42	--	38.1	590	487	82.5	258	205	79.5	42	27	64.3
Language	2014	1,096	1,036	94.5	120	112	93.3	31	21	67.7	607	572	94.2	--	--	≥95.0	28	25	89.3
	2015	1,059	998	94.2	117	107	91.5	34	30	88.2	--	--	≥95.0	320	302	94.4	--	--	88.9

*Note.* AP = Advanced Placement. Results for MCPS American Indian or Alaskan Native and Native Hawaiian or Other Pacific Islander students are included with all students but are not reported separately. AP exam results are based on data reported by the College Board as of May 2015. Sum of percentages calculated from unrounded values may vary by ±0.1 points from rounded percentages. To comply with federal requirements, any percentage rates greater than or equal to 95.0% or less than or equal to 5.0% will be noted as ≥95.0 or ≤5.0, respectively, and the number of AP exams and the number of exams with scores of 3 or higher will not be reported (--). Additionally, results are not reported (--) for groups with fewer than 10 AP exams. For groups of between 10 and 20 AP exams, only the percentage rate will be reported. No results are available for Physics 1 because it is a new AP exam in 2015.

Table B3  
 2015 MCPS Advanced Placement English Language and Composition:  
 Number of Exams Taken; Percentage of Exam Scores of 1, 2, 3, 4, and 5; and Mean Exam Score by High School

High School	N Exams Taken	% Exam Scores of 1, 2, 3, 4, or 5					% Exam Scores 3 or Higher	Mean Exam Score
		% Score 1	% Score 2	% Score 3	% Score 4	% Score 5		
All	3,838	7.4	21.7	27.6	26.1	17.2	70.9	3.2
Bethesda-Chevy Chase	175	≤5.0	17.1	29.1	31.4	18.9	79.4	3.5
Montgomery Blair	254	≤5.0	7.5	19.7	39.8	31.5	90.9	3.9
James Hubert Blake	114	5.3	22.8	28.9	28.9	14.0	71.9	3.2
Winston Churchill	281	≤5.0	10.7	31.7	37.4	19.2	88.3	3.6
Clarksburg	135	≤5.0	30.4	35.6	22.2	8.1	65.9	3.0
Damascus	190	8.4	34.2	32.6	15.3	9.5	57.4	2.8
Albert Einstein	131	13.0	32.1	28.2	16.8	9.9	55.0	2.8
Gaithersburg	92	17.4	40.2	32.6	7.6	≤5.0	42.4	2.4
Walter Johnson	280	≤5.0	8.9	28.9	36.1	24.6	89.6	3.7
John F. Kennedy	30	16.7	70.0	10.0	≤5.0	≤5.0	13.3	2.0
Col. Zadok Magruder	117	≤5.0	29.9	33.3	23.9	10.3	67.5	3.1
Richard Montgomery	199	8.5	22.6	28.1	21.6	19.1	68.8	3.2
Northwest	253	9.1	36.8	31.2	17.4	5.5	54.2	2.7
Northwood	74	21.6	35.1	20.3	13.5	9.5	43.2	2.5
Paint Branch	98	≤5.0	35.7	33.7	19.4	7.1	60.2	2.9
Poolesville	190	≤5.0	7.4	19.5	36.3	36.8	92.6	4.0
Quince Orchard	338	21.0	29.0	26.3	18.9	≤5.0	50.0	2.6
Rockville	103	24.3	43.7	19.4	11.7	≤5.0	32.0	2.2
Seneca Valley	--	--	--	--	--	--	--	--
Sherwood	183	≤5.0	13.1	37.7	28.4	18.6	84.7	3.5
Springbrook	90	23.3	33.3	22.2	12.2	8.9	43.3	2.5
Watkins Mill	21	66.7	33.3	≤5.0	≤5.0	≤5.0	≤5.0	1.3
Wheaton	44	≤5.0	34.1	25.0	20.5	15.9	61.4	3.1
Walt Whitman	163	≤5.0	≤5.0	20.2	34.4	42.9	≥95.0	4.2
Thomas S. Wootton	283	≤5.0	9.5	26.1	35.3	28.6	90.1	3.8

Note. Sum of percentages calculated from unrounded values may vary by ±0.1 points from rounded percentages. To comply with federal requirements, any percentage rates greater than or equal to 95.0% or less than or equal to 5.0% will be noted as ≥95.0 or ≤5.0, respectively. Additionally, results are not reported (--) for groups with fewer than 10 AP exams. For groups of between 10 and 20 AP exams, only the percentage rate will be reported.

Table B4  
2015 MCPS Advanced Placement English Literature and Composition:  
Number of Exams Taken; Percentage of Exam Scores of 1, 2, 3, 4, and 5; and Mean Exam Score by High School

High School	N Exams Taken	% Exam Scores of 1, 2, 3, 4, or 5					% Exam Scores 3 or Higher	Mean Exam Score
		% Score 1	% Score 2	% Score 3	% Score 4	% Score 5		
All	2,608	7.2	27.1	29.7	24.9	11.1	65.7	3.1
Bethesda-Chevy Chase	135	5.2	26.7	31.9	28.1	8.1	68.1	3.1
Montgomery Blair	54	≤5.0	7.4	16.7	38.9	35.2	90.7	4.0
James Hubert Blake	83	6.0	31.3	31.3	27.7	≤5.0	62.7	2.9
Winston Churchill	212	≤5.0	12.7	33.0	32.5	20.8	86.3	3.6
Clarksburg	70	≤5.0	37.1	42.9	12.9	≤5.0	60.0	2.8
Damascus	102	≤5.0	47.1	35.3	8.8	≤5.0	49.0	2.6
Albert Einstein	83	18.1	36.1	33.7	8.4	≤5.0	45.8	2.4
Gaithersburg	69	≤5.0	27.5	46.4	18.8	7.2	72.5	3.1
Walter Johnson	188	≤5.0	14.9	31.4	38.3	14.4	84.0	3.5
John F. Kennedy	58	32.8	51.7	12.1	≤5.0	≤5.0	15.5	1.9
Col. Zadok Magruder	48	≤5.0	22.9	25.0	41.7	10.4	77.1	3.4
Richard Montgomery	188	≤5.0	14.9	19.7	33.5	31.4	84.6	3.8
Northwest	182	8.8	40.7	36.8	12.6	≤5.0	50.5	2.6
Northwood	50	12.0	66.0	16.0	6.0	≤5.0	22.0	2.2
Paint Branch	65	6.2	46.2	32.3	13.8	≤5.0	47.7	2.6
Poolesville	163	≤5.0	15.3	40.5	34.4	8.6	83.4	3.3
Quince Orchard	277	26.0	39.0	21.3	10.5	≤5.0	35.0	2.3
Rockville	49	≤5.0	44.9	32.7	20.4	≤5.0	55.1	2.8
Seneca Valley	71	18.3	52.1	26.8	≤5.0	≤5.0	29.6	2.2
Sherwood	124	≤5.0	19.4	34.7	37.1	8.1	79.8	3.3
Springbrook	42	26.2	28.6	35.7	9.5	≤5.0	45.2	2.3
Watkins Mill	--	--	--	--	--	--	--	--
Wheaton	32	6.3	40.6	34.4	12.5	6.3	53.1	2.7
Walt Whitman	142	≤5.0	≤5.0	24.6	47.9	22.5	≥95.0	3.9
Thomas S. Wootton	114	≤5.0	≤5.0	21.9	43.9	28.9	94.7	4.0

Note. Sum of percentages calculated from unrounded values may vary by ±0.1 points from rounded percentages. To comply with federal requirements, any percentage rates greater than or equal to 95.0% or less than or equal to 5.0% will be noted as ≥95.0 or ≤5.0, respectively. Additionally, results are not reported (--) for groups with fewer than 10 AP exams. For groups of between 10 and 20 AP exams, only the percentage rate will be reported.

Table B5  
2015 MCPS Advanced Placement Calculus AB:  
Number of Exams Taken; Percentage of Exam Scores of 1, 2, 3, 4, and 5; and Mean Exam Score by High School

High School	N Exams Taken	% Exam Scores of 1, 2, 3, 4, or 5					% Exam Scores 3 or Higher	Mean Exam Score
		% Score 1	% Score 2	% Score 3	% Score 4	% Score 5		
All	1,723	18.9	8.3	19.3	23.5	30.0	72.8	3.4
Bethesda-Chevy Chase	66	24.2	10.6	36.4	15.2	13.6	65.2	2.8
Montgomery Blair	83	42.2	14.5	25.3	12.0	6.0	43.4	2.3
James Hubert Blake	42	35.7	19.0	26.2	11.9	7.1	45.2	2.4
Winston Churchill	119	≤5.0	≤5.0	13.4	32.8	47.9	94.1	4.2
Clarksburg	45	≤5.0	≤5.0	22.2	22.2	48.9	93.3	4.1
Damascus	55	≤5.0	10.9	14.5	29.1	41.8	85.5	3.9
Albert Einstein	55	25.5	9.1	18.2	27.3	20.0	65.5	3.1
Gaithersburg	29	37.9	13.8	31.0	10.3	6.9	48.3	2.3
Walter Johnson	146	≤5.0	≤5.0	17.8	22.6	54.1	94.5	4.2
John F. Kennedy	23	60.9	21.7	17.4	≤5.0	≤5.0	17.4	1.6
Col. Zadok Magruder	47	12.8	≤5.0	36.2	29.8	19.1	85.1	3.4
Richard Montgomery	96	9.4	5.2	25.0	33.3	27.1	85.4	3.6
Northwest	110	10.9	5.5	15.5	30.0	38.2	83.6	3.8
Northwood	21	≥95.0	≤5.0	≤5.0	≤5.0	≤5.0	≤5.0	1.0
Paint Branch	54	38.9	22.2	31.5	5.6	≤5.0	38.9	2.1
Poolesville	108	13.9	8.3	18.5	36.1	23.1	77.8	3.5
Quince Orchard	91	≤5.0	≤5.0	6.6	25.3	67.0	≥95.0	4.6
Rockville	39	48.7	5.1	20.5	23.1	≤5.0	46.2	2.3
Seneca Valley	19	42.1	15.8	26.3	15.8	≤5.0	42.1	2.2
Sherwood	95	32.6	21.1	25.3	16.8	≤5.0	46.3	2.4
Springbrook	48	8.3	10.4	29.2	37.5	14.6	81.3	3.4
Watkins Mill	19	84.2	5.3	5.3	5.3	≤5.0	10.5	1.3
Wheaton	64	62.5	20.3	10.9	≤5.0	≤5.0	17.2	1.7
Walt Whitman	106	≤5.0	≤5.0	20.8	37.7	35.8	94.3	4.0
Thomas S. Wootton	143	≤5.0	≤5.0	8.4	22.4	62.2	93.0	4.4

*Note.* Sum of percentages calculated from unrounded values may vary by ±0.1 points from rounded percentages. To comply with federal requirements, any percentage rates greater than or equal to 95.0% or less than or equal to 5.0% will be noted as ≥95.0 or ≤5.0, respectively. Additionally, results are not reported (--) for groups with fewer than 10 AP exams. For groups of between 10 and 20 AP exams, only the percentage rate will be reported.

Table B6  
2015 MCPS Advanced Placement Calculus BC:  
Number of Exams Taken; Percentage of Exam Scores of 1, 2, 3, 4, and 5; and Mean Exam Score by High School

High School	N Exams Taken	% Exam Scores of 1, 2, 3, 4, or 5					% Exam Scores 3 or Higher	Mean Exam Score
		% Score 1	% Score 2	% Score 3	% Score 4	% Score 5		
All	1,241	6.5	≤5.0	17.1	18.6	53.8	89.5	4.1
Bethesda-Chevy Chase	61	≤5.0	≤5.0	11.5	29.5	55.7	≥95.0	4.4
Montgomery Blair	111	≤5.0	≤5.0	≤5.0	18.9	77.5	≥95.0	4.7
James Hubert Blake	31	6.5	6.5	32.3	29.0	25.8	87.1	3.6
Winston Churchill	123	≤5.0	≤5.0	15.4	17.9	63.4	≥95.0	4.4
Clarksburg	28	≤5.0	≤5.0	7.1	35.7	57.1	≥95.0	4.5
Damascus	20	≤5.0	≤5.0	10.0	15.0	75.0	≥95.0	4.7
Albert Einstein	25	20.0	≤5.0	36.0	28.0	12.0	76.0	3.1
Gaithersburg	28	39.3	10.7	21.4	14.3	14.3	50.0	2.5
Walter Johnson	27	≤5.0	≤5.0	≤5.0	22.2	77.8	≥95.0	4.8
John F. Kennedy	--	--	--	--	--	--	--	--
Col. Zadok Magruder	19	21.1	10.5	42.1	5.3	21.1	68.4	2.9
Richard Montgomery	134	≤5.0	≤5.0	16.4	16.4	62.7	≥95.0	4.3
Northwest	51	≤5.0	≤5.0	15.7	7.8	74.5	≥95.0	4.5
Northwood	21	61.9	14.3	9.5	9.5	≤5.0	23.8	1.8
Paint Branch	39	≤5.0	17.9	35.9	20.5	23.1	79.5	3.4
Poolesville	93	5.4	7.5	25.8	22.6	38.7	87.1	3.8
Quince Orchard	63	≤5.0	≤5.0	≤5.0	11.1	84.1	≥95.0	4.8
Rockville	13	15.4	7.7	46.2	7.7	23.1	76.9	3.2
Seneca Valley	13	7.7	7.7	23.1	15.4	46.2	84.6	3.8
Sherwood	54	16.7	≤5.0	33.3	18.5	27.8	79.6	3.4
Springbrook	29	≤5.0	6.9	51.7	27.6	13.8	93.1	3.5
Watkins Mill	21	47.6	19.0	14.3	9.5	9.5	33.3	2.1
Wheaton	35	17.1	14.3	31.4	17.1	20.0	68.6	3.1
Walt Whitman	80	≤5.0	≤5.0	≤5.0	15.0	77.5	≥95.0	4.6
Thomas S. Wootton	118	≤5.0	≤5.0	11.9	21.2	66.9	≥95.0	4.6

*Note.* Sum of percentages calculated from unrounded values may vary by ±0.1 points from rounded percentages. To comply with federal requirements, any percentage rates greater than or equal to 95.0% or less than or equal to 5.0% will be noted as ≥95.0 or ≤5.0, respectively. Additionally, results are not reported (--) for groups with fewer than 10 AP exams. For groups of between 10 and 20 AP exams, only the percentage rate will be reported.

Table B7  
2015 MCPS Advanced Placement Statistics:  
Number of Exams Taken; Percentage of Exam Scores of 1, 2, 3, 4, and 5; and Mean Exam Score by High School

High School	N Exams Taken	% Exam Scores of 1, 2, 3, 4, or 5					% Exam Scores 3 or Higher	Mean Exam Score
		% Score 1	% Score 2	% Score 3	% Score 4	% Score 5		
All	1,630	17.7	13.2	23.1	22.9	23.2	69.1	3.2
Bethesda-Chevy Chase	103	13.6	25.2	29.1	22.3	9.7	61.2	2.9
Montgomery Blair	135	≤5.0	5.2	20.0	28.1	45.2	93.3	4.1
James Hubert Blake	55	29.1	21.8	30.9	16.4	≤5.0	49.1	2.4
Winston Churchill	72	≤5.0	5.6	19.4	29.2	44.4	93.1	4.1
Clarksburg	22	22.7	9.1	13.6	36.4	18.2	68.2	3.2
Damascus	33	24.2	18.2	45.5	12.1	≤5.0	57.6	2.5
Albert Einstein	63	17.5	22.2	31.7	25.4	≤5.0	60.3	2.7
Gaithersburg	56	39.3	23.2	25.0	8.9	≤5.0	37.5	2.1
Walter Johnson	124	≤5.0	≤5.0	23.4	31.5	42.7	≥95.0	4.1
John F. Kennedy	44	54.5	31.8	9.1	≤5.0	≤5.0	13.6	1.7
Col. Zadok Magruder	70	12.9	18.6	42.9	12.9	12.9	68.6	2.9
Richard Montgomery	137	≤5.0	8.8	16.1	32.1	40.9	89.1	4.0
Northwest	153	40.5	15.7	24.2	14.4	5.2	43.8	2.3
Northwood	19	57.9	21.1	10.5	10.5	≤5.0	21.1	1.7
Paint Branch	57	31.6	15.8	24.6	26.3	≤5.0	52.6	2.5
Poolesville	99	≤5.0	≤5.0	14.1	26.3	55.6	≥95.0	4.3
Quince Orchard	72	8.3	6.9	29.2	25.0	30.6	84.7	3.6
Rockville	17	≤5.0	5.9	29.4	29.4	35.3	94.1	3.9
Seneca Valley	--	--	--	--	--	--	--	--
Sherwood	44	≤5.0	20.5	15.9	43.2	20.5	79.5	3.6
Springbrook	17	11.8	29.4	23.5	11.8	23.5	58.8	3.1
Watkins Mill	49	71.4	16.3	8.2	≤5.0	≤5.0	12.2	1.4
Wheaton	60	55.0	18.3	13.3	8.3	≤5.0	26.7	1.9
Walt Whitman	37	5.4	21.6	24.3	32.4	16.2	73.0	3.3
Thomas S. Wootton	92	≤5.0	≤5.0	28.3	30.4	35.9	94.6	4.0

Note. Sum of percentages calculated from unrounded values may vary by ±0.1 points from rounded percentages. To comply with federal requirements, any percentage rates greater than or equal to 95.0% or less than or equal to 5.0% will be noted as ≥95.0 or ≤5.0, respectively. Additionally, results are not reported (--) for groups with fewer than 10 AP exams. For groups of between 10 and 20 AP exams, only the percentage rate will be reported.



Table B8  
2015 MCPS Advanced Placement Biology:  
Number of Exams Taken; Percentage of Exam Scores of 1, 2, 3, 4, and 5; and Mean Exam Score by High School

High School	N Exams Taken	% Exam Scores of 1, 2, 3, 4, or 5					% Exam Scores 3 or Higher	Mean Exam Score
		% Score 1	% Score 2	% Score 3	% Score 4	% Score 5		
All	1,204	≤5.0	12.8	36.4	36.0	12.5	84.8	3.4
Bethesda-Chevy Chase	49	10.2	18.4	42.9	20.4	8.2	71.4	3.0
Montgomery Blair	134	≤5.0	8.2	35.1	34.3	22.4	91.8	3.7
James Hubert Blake	49	≤5.0	≤5.0	38.8	46.9	10.2	≥95.0	3.6
Winston Churchill	134	≤5.0	≤5.0	32.8	50.0	14.9	≥95.0	3.8
Clarksburg	59	≤5.0	18.6	40.7	35.6	5.1	81.4	3.3
Damascus	25	≤5.0	8.0	52.0	36.0	≤5.0	92.0	3.4
Albert Einstein	24	12.5	25.0	20.8	33.3	8.3	62.5	3.0
Gaithersburg	35	≤5.0	25.7	45.7	22.9	≤5.0	71.4	3.0
Walter Johnson	38	≤5.0	≤5.0	15.8	52.6	31.6	≥95.0	4.2
John F. Kennedy	--	--	--	--	--	--	--	--
Col. Zadok Magruder	27	≤5.0	22.2	37.0	40.7	≤5.0	77.8	3.2
Richard Montgomery	35	≤5.0	8.6	28.6	42.9	20.0	91.4	3.7
Northwest	40	≤5.0	17.5	55.0	25.0	≤5.0	80.0	3.0
Northwood	11	≤5.0	36.4	63.6	≤5.0	≤5.0	63.6	2.6
Paint Branch	71	5.6	32.4	45.1	16.9	≤5.0	62.0	2.7
Poolesville	80	≤5.0	≤5.0	31.3	33.8	31.3	≥95.0	3.9
Quince Orchard	65	≤5.0	23.1	27.7	38.5	7.7	73.8	3.2
Rockville	22	9.1	27.3	59.1	≤5.0	≤5.0	63.6	2.6
Seneca Valley	--	--	--	--	--	--	--	--
Sherwood	68	≤5.0	8.8	42.6	42.6	≤5.0	89.7	3.4
Springbrook	30	6.7	46.7	33.3	6.7	6.7	46.7	2.6
Watkins Mill	--	--	--	--	--	--	--	--
Wheaton	46	13.0	21.7	37.0	26.1	≤5.0	65.2	2.8
Walt Whitman	59	≤5.0	≤5.0	27.1	45.8	23.7	≥95.0	3.9
Thomas S. Wootton	103	≤5.0	≤5.0	33.0	48.5	14.6	≥95.0	3.7

Note. Sum of percentages calculated from unrounded values may vary by ±0.1 points from rounded percentages. To comply with federal requirements, any percentage rates greater than or equal to 95.0% or less than or equal to 5.0% will be noted as ≥95.0 or ≤5.0, respectively. Additionally, results are not reported (--) for groups with fewer than 10 AP exams. For groups of between 10 and 20 AP exams, only the percentage rate will be reported.

Table B9  
2015 MCPS Advanced Placement Chemistry:  
Number of Exams Taken; Percentage of Exam Scores of 1, 2, 3, 4, and 5; and Mean Exam Score by High School

High School	N Exams Taken	% Exam Scores of 1, 2, 3, 4, or 5					% Exam Scores 3 or Higher	Mean Exam Score
		% Score 1	% Score 2	% Score 3	% Score 4	% Score 5		
All	871	5.6	13.7	30.9	27.1	22.7	80.7	3.5
Bethesda-Chevy Chase	35	≤5.0	≤5.0	11.4	37.1	48.6	≥95.0	4.3
Montgomery Blair	90	≤5.0	5.6	22.2	35.6	33.3	91.1	3.9
James Hubert Blake	--	--	--	--	--	--	--	--
Winston Churchill	72	≤5.0	6.9	16.7	25.0	51.4	93.1	4.2
Clarksburg	62	6.5	21.0	32.3	27.4	12.9	72.6	3.2
Damascus	13	≤5.0	15.4	46.2	23.1	15.4	84.6	3.4
Albert Einstein	--	--	--	--	--	--	--	--
Gaithersburg	17	29.4	11.8	41.2	11.8	5.9	58.8	2.5
Walter Johnson	59	≤5.0	11.9	42.4	32.2	13.6	88.1	3.5
John F. Kennedy	--	--	--	--	--	--	--	--
Col. Zadok Magruder	12	≤5.0	≤5.0	33.3	16.7	50.0	≥95.0	4.2
Richard Montgomery	40	≤5.0	10.0	40.0	27.5	22.5	90.0	3.6
Northwest	54	11.1	16.7	35.2	22.2	14.8	72.2	3.1
Northwood	17	17.6	52.9	23.5	5.9	≤5.0	29.4	2.2
Paint Branch	41	7.3	22.0	46.3	14.6	9.8	70.7	3.0
Poolesville	14	7.1	14.3	28.6	50.0	≤5.0	78.6	3.2
Quince Orchard	32	12.5	28.1	37.5	12.5	9.4	59.4	2.8
Rockville	15	20.0	46.7	26.7	6.7	≤5.0	33.3	2.2
Seneca Valley	--	--	--	--	--	--	--	--
Sherwood	40	22.5	17.5	40.0	20.0	≤5.0	60.0	2.6
Springbrook	27	11.1	22.2	40.7	22.2	≤5.0	66.7	2.9
Watkins Mill	--	--	--	--	--	--	--	--
Wheaton	25	12.0	32.0	36.0	16.0	≤5.0	56.0	2.7
Walt Whitman	82	≤5.0	7.3	31.7	37.8	23.2	92.7	3.8
Thomas S. Wootton	114	≤5.0	≤5.0	23.7	33.3	38.6	≥95.0	4.1

Note. Sum of percentages calculated from unrounded values may vary by ±0.1 points from rounded percentages. To comply with federal requirements, any percentage rates greater than or equal to 95.0% or less than or equal to 5.0% will be noted as ≥95.0 or ≤5.0, respectively. Additionally, results are not reported (--) for groups with fewer than 10 AP exams. For groups of between 10 and 20 AP exams, only the percentage rate will be reported.

Table B10  
2015 MCPS Advanced Placement Environmental Science:  
Number of Exams Taken; Percentage of Exam Scores of 1, 2, 3, 4, and 5; and Mean Exam Score by High School

High School	N Exams Taken	% Exam Scores of 1, 2, 3, 4, or 5					% Exam Scores 3 or Higher	Mean Exam Score
		% Score 1	% Score 2	% Score 3	% Score 4	% Score 5		
All	1,200	16.0	23.6	15.3	31.3	13.8	60.4	3.0
Bethesda-Chevy Chase	94	16.0	23.4	14.9	27.7	18.1	60.6	3.1
Montgomery Blair	58	12.1	22.4	22.4	32.8	10.3	65.5	3.1
James Hubert Blake	49	10.2	30.6	26.5	28.6	≤5.0	59.2	2.9
Winston Churchill	133	21.8	25.6	18.8	23.3	10.5	52.6	2.8
Clarksburg	35	8.6	11.4	17.1	40.0	22.9	80.0	3.6
Damascus	48	39.6	31.3	14.6	14.6	≤5.0	29.2	2.0
Albert Einstein	94	18.1	30.9	17.0	25.5	8.5	51.1	2.8
Gaithersburg	12	33.3	50.0	≤5.0	16.7	≤5.0	16.7	2.0
Walter Johnson	57	≤5.0	8.8	12.3	33.3	43.9	89.5	4.1
John F. Kennedy	--	--	--	--	--	--	--	--
Col. Zadok Magruder	53	11.3	34.0	11.3	28.3	15.1	54.7	3.0
Richard Montgomery	110	≤5.0	20.0	19.1	43.6	13.6	76.4	3.4
Northwest	63	25.4	27.0	20.6	23.8	≤5.0	47.6	2.5
Northwood	36	55.6	22.2	≤5.0	16.7	≤5.0	22.2	1.9
Paint Branch	16	43.8	37.5	12.5	6.3	≤5.0	18.8	1.8
Poolesville	75	6.7	14.7	≤5.0	38.7	36.0	78.7	3.8
Quince Orchard	38	23.7	21.1	18.4	28.9	7.9	55.3	2.8
Rockville	--	--	--	--	--	--	--	--
Seneca Valley	--	--	--	--	--	--	--	--
Sherwood	55	20.0	27.3	14.5	29.1	9.1	52.7	2.8
Springbrook	--	--	--	--	--	--	--	--
Watkins Mill	--	--	--	--	--	--	--	--
Wheaton	--	--	--	--	--	--	--	--
Walt Whitman	141	≤5.0	18.4	10.6	51.8	14.2	76.6	3.5
Thomas S. Wootton	27	11.1	29.6	25.9	14.8	18.5	59.3	3.0

Note. Sum of percentages calculated from unrounded values may vary by ±0.1 points from rounded percentages. To comply with federal requirements, any percentage rates greater than or equal to 95.0% or less than or equal to 5.0% will be noted as ≥95.0 or ≤5.0, respectively. Additionally, results are not reported (--) for groups with fewer than 10 AP exams. For groups of between 10 and 20 AP exams, only the percentage rate will be reported.

Table B11  
2015 MCPS Advanced Placement Physics 1:  
Number of Exams Taken; Percentage of Exam Scores of 1, 2, 3, 4, and 5; and Mean Exam Score by High School

High School	N Exams Taken	% Exam Scores of 1, 2, 3, 4, or 5					% Exam Scores 3 or Higher	Mean Exam Score
		% Score 1	% Score 2	% Score 3	% Score 4	% Score 5		
All	414	16.9	27.5	25.6	21.3	8.7	55.6	2.8
Bethesda-Chevy Chase	--	--	--	--	--	--	--	--
Montgomery Blair	--	--	--	--	--	--	--	--
James Hubert Blake	--	--	--	--	--	--	--	--
Winston Churchill	--	--	--	--	--	--	--	--
Clarksburg	22	45.5	27.3	18.2	9.1	≤5.0	27.3	1.9
Damascus	13	7.7	30.8	38.5	23.1	≤5.0	61.5	2.8
Albert Einstein	41	29.3	41.5	19.5	7.3	≤5.0	29.3	2.1
Gaithersburg	--	--	--	--	--	--	--	--
Walter Johnson	74	≤5.0	20.3	37.8	28.4	9.5	75.7	3.2
John F. Kennedy	--	--	--	--	--	--	--	--
Col. Zadok Magruder	--	--	--	--	--	--	--	--
Richard Montgomery	--	--	--	--	--	--	--	--
Northwest	64	32.8	50.0	12.5	≤5.0	≤5.0	17.2	1.9
Northwood	--	--	--	--	--	--	--	--
Paint Branch	39	33.3	51.3	12.8	≤5.0	≤5.0	15.4	1.8
Poolesville	29	≤5.0	17.2	34.5	31.0	17.2	82.8	3.5
Quince Orchard	40	12.5	17.5	35.0	27.5	7.5	70.0	3.0
Rockville	--	--	--	--	--	--	--	--
Seneca Valley	--	--	--	--	--	--	--	--
Sherwood	--	--	--	--	--	--	--	--
Springbrook	--	--	--	--	--	--	--	--
Watkins Mill	--	--	--	--	--	--	--	--
Wheaton	--	--	--	--	--	--	--	--
Walt Whitman	78	≤5.0	9.0	25.6	43.6	19.2	88.5	3.7
Thomas S. Wootton	--	--	--	--	--	--	--	--

*Note.* Sum of percentages calculated from unrounded values may vary by ±0.1 points from rounded percentages. To comply with federal requirements, any percentage rates greater than or equal to 95.0% or less than or equal to 5.0% will be noted as ≥95.0 or ≤5.0, respectively. Additionally, results are not reported (--) for groups with fewer than 10 AP exams. For groups of between 10 and 20 AP exams, only the percentage rate will be reported.

Table B12  
 2015 MCPS Advanced Placement Physics C: Mechanics:  
 Number of Exams Taken; Percentage of Exam Scores of 1, 2, 3, 4, and 5; and Mean Exam Score by High School

High School	N Exams Taken	% Exam Scores of 1, 2, 3, 4, or 5					% Exam Scores 3 or Higher	Mean Exam Score
		% Score 1	% Score 2	% Score 3	% Score 4	% Score 5		
All	552	7.1	10.5	18.1	27.2	37.1	82.4	3.8
Bethesda-Chevy Chase	31	≤5.0	≤5.0	19.4	32.3	45.2	≥95.0	4.2
Montgomery Blair	64	≤5.0	6.3	14.1	25.0	50.0	89.1	4.1
James Hubert Blake	27	29.6	7.4	33.3	29.6	≤5.0	63.0	2.6
Winston Churchill	65	6.2	16.9	23.1	33.8	20.0	76.9	3.4
Clarksburg	16	6.3	6.3	31.3	50.0	6.3	87.5	3.4
Damascus	20	≤5.0	≤5.0	15.0	45.0	30.0	90.0	3.9
Albert Einstein	--	--	--	--	--	--	--	--
Gaithersburg	16	18.8	37.5	18.8	12.5	12.5	43.8	2.6
Walter Johnson	14	≤5.0	7.1	≤5.0	7.1	85.7	92.9	4.7
John F. Kennedy	--	--	--	--	--	--	--	--
Col. Zadok Magruder	14	7.1	21.4	14.3	21.4	35.7	71.4	3.6
Richard Montgomery	45	≤5.0	13.3	15.6	35.6	33.3	84.4	3.8
Northwest	13	≤5.0	23.1	30.8	38.5	7.7	76.9	3.3
Northwood	--	--	--	--	--	--	--	--
Paint Branch	--	--	--	--	--	--	--	--
Poolesville	23	≤5.0	≤5.0	≤5.0	21.7	73.9	≥95.0	4.7
Quince Orchard	30	≤5.0	10.0	43.3	26.7	16.7	86.7	3.4
Rockville	--	--	--	--	--	--	--	--
Seneca Valley	--	--	--	--	--	--	--	--
Sherwood	38	18.4	21.1	31.6	23.7	5.3	60.5	2.8
Springbrook	13	30.8	30.8	23.1	15.4	≤5.0	38.5	2.2
Watkins Mill	--	--	--	--	--	--	--	--
Wheaton	16	25.0	25.0	12.5	31.3	6.3	50.0	2.7
Walt Whitman	50	≤5.0	≤5.0	6.0	20.0	74.0	≥95.0	4.7
Thomas S. Wootton	50	≤5.0	≤5.0	≤5.0	16.0	84.0	≥95.0	4.8

Note. Sum of percentages calculated from unrounded values may vary by ±0.1 points from rounded percentages. To comply with federal requirements, any percentage rates greater than or equal to 95.0% or less than or equal to 5.0% will be noted as ≥95.0 or ≤5.0, respectively. Additionally, results are not reported (--) for groups with fewer than 10 AP exams. For groups of between 10 and 20 AP exams, only the percentage rate will be reported.

Table B13  
2015 MCPS Advanced Placement Microeconomics:  
Number of Exams Taken; Percentage of Exam Scores of 1, 2, 3, 4, and 5; and Mean Exam Score by High School

High School	N Exams Taken	% Exam Scores of 1, 2, 3, 4, or 5					% Exam Scores 3 or Higher	Mean Exam Score
		% Score 1	% Score 2	% Score 3	% Score 4	% Score 5		
All	619	10.3	12.8	17.6	31.3	27.9	76.9	3.5
Bethesda-Chevy Chase	75	≤5.0	26.7	12.0	36.0	21.3	69.3	3.4
Montgomery Blair	27	≤5.0	≤5.0	14.8	51.9	25.9	92.6	3.9
James Hubert Blake	--	--	--	--	--	--	--	--
Winston Churchill	63	≤5.0	≤5.0	11.1	23.8	63.5	≥95.0	4.5
Clarksburg	19	5.3	21.1	21.1	36.8	15.8	73.7	3.4
Damascus	--	--	--	--	--	--	--	--
Albert Einstein	--	--	--	--	--	--	--	--
Gaithersburg	12	41.7	16.7	16.7	25.0	≤5.0	41.7	2.3
Walter Johnson	87	6.9	11.5	17.2	36.8	27.6	81.6	3.7
John F. Kennedy	--	--	--	--	--	--	--	--
Col. Zadok Magruder	--	--	--	--	--	--	--	--
Richard Montgomery	45	≤5.0	≤5.0	17.8	24.4	48.9	91.1	4.1
Northwest	13	69.2	23.1	7.7	≤5.0	≤5.0	7.7	1.4
Northwood	--	--	--	--	--	--	--	--
Paint Branch	--	--	--	--	--	--	--	--
Poolesville	73	≤5.0	8.2	19.2	45.2	23.3	87.7	3.8
Quince Orchard	30	26.7	20.0	33.3	20.0	≤5.0	53.3	2.5
Rockville	--	--	--	--	--	--	--	--
Seneca Valley	--	--	--	--	--	--	--	--
Sherwood	18	11.1	27.8	38.9	11.1	11.1	61.1	2.8
Springbrook	--	--	--	--	--	--	--	--
Watkins Mill	19	89.5	10.5	≤5.0	≤5.0	≤5.0	≤5.0	1.1
Wheaton	--	--	--	--	--	--	--	--
Walt Whitman	54	5.6	16.7	25.9	31.5	20.4	77.8	3.4
Thomas S. Wootton	76	≤5.0	9.2	17.1	31.6	40.8	89.5	4.0

*Note.* Sum of percentages calculated from unrounded values may vary by ±0.1 points from rounded percentages. To comply with federal requirements, any percentage rates greater than or equal to 95.0% or less than or equal to 5.0% will be noted as ≥95.0 or ≤5.0, respectively. Additionally, results are not reported (--) for groups with fewer than 10 AP exams. For groups of between 10 and 20 AP exams, only the percentage rate will be reported.

Table B14  
2015 MCPS Advanced Placement Macroeconomics:  
Number of Exams Taken; Percentage of Exam Scores of 1, 2, 3, 4, and 5; and Mean Exam Score by High School

High School	N Exams Taken	% Exam Scores of 1, 2, 3, 4, or 5					% Exam Scores 3 or Higher	Mean Exam Score
		% Score 1	% Score 2	% Score 3	% Score 4	% Score 5		
All	613	9.5	17.5	19.2	26.3	27.6	73.1	3.5
Bethesda-Chevy Chase	61	14.8	21.3	18.0	29.5	16.4	63.9	3.1
Montgomery Blair	34	11.8	8.8	26.5	32.4	20.6	79.4	3.4
James Hubert Blake	--	--	--	--	--	--	--	--
Winston Churchill	63	≤5.0	≤5.0	11.1	17.5	65.1	93.7	4.4
Clarksburg	22	≤5.0	27.3	27.3	18.2	22.7	68.2	3.3
Damascus	--	--	--	--	--	--	--	--
Albert Einstein	--	--	--	--	--	--	--	--
Gaithersburg	--	--	--	--	--	--	--	--
Walter Johnson	85	8.2	15.3	20.0	30.6	25.9	76.5	3.5
John F. Kennedy	--	--	--	--	--	--	--	--
Col. Zadok Magruder	--	--	--	--	--	--	--	--
Richard Montgomery	45	≤5.0	6.7	8.9	35.6	48.9	93.3	4.3
Northwest	11	54.5	36.4	9.1	≤5.0	≤5.0	9.1	1.5
Northwood	--	--	--	--	--	--	--	--
Paint Branch	--	--	--	--	--	--	--	--
Poolesville	74	≤5.0	14.9	24.3	36.5	20.3	81.1	3.5
Quince Orchard	35	20.0	37.1	20.0	11.4	11.4	42.9	2.6
Rockville	--	--	--	--	--	--	--	--
Seneca Valley	--	--	--	--	--	--	--	--
Sherwood	30	33.3	26.7	20.0	13.3	6.7	40.0	2.3
Springbrook	--	--	--	--	--	--	--	--
Watkins Mill	--	--	--	--	--	--	--	--
Wheaton	--	--	--	--	--	--	--	--
Walt Whitman	53	9.4	15.1	28.3	24.5	22.6	75.5	3.4
Thomas S. Wootton	84	≤5.0	15.5	16.7	29.8	34.5	81.0	3.8

*Note.* Sum of percentages calculated from unrounded values may vary by ±0.1 points from rounded percentages. To comply with federal requirements, any percentage rates greater than or equal to 95.0% or less than or equal to 5.0% will be noted as ≥95.0 or ≤5.0, respectively. Additionally, results are not reported (--) for groups with fewer than 10 AP exams. For groups of between 10 and 20 AP exams, only the percentage rate will be reported.

Table B15  
2015 MCPS Advanced Placement U.S. Government and Politics:  
Number of Exams Taken; Percentage of Exam Scores of 1, 2, 3, 4, and 5; and Mean Exam Score by High School

High School	N Exams Taken	% Exam Scores of 1, 2, 3, 4, or 5					% Exam Scores 3 or Higher	Mean Exam Score
		% Score 1	% Score 2	% Score 3	% Score 4	% Score 5		
All	4,521	9.9	17.7	27.3	21.1	23.9	72.3	3.3
Bethesda-Chevy Chase	301	6.0	12.0	22.9	25.9	33.2	82.1	3.7
Montgomery Blair	257	≤5.0	14.0	21.4	23.3	38.9	83.7	3.8
James Hubert Blake	118	8.5	30.5	33.1	19.5	8.5	61.0	2.9
Winston Churchill	281	≤5.0	15.3	28.5	22.1	32.0	82.6	3.7
Clarksburg	150	16.7	20.0	32.0	18.0	13.3	63.3	2.9
Damascus	101	10.9	22.8	32.7	22.8	10.9	66.3	3.0
Albert Einstein	88	14.8	30.7	22.7	13.6	18.2	54.5	2.9
Gaithersburg	54	16.7	18.5	37.0	14.8	13.0	64.8	2.9
Walter Johnson	303	≤5.0	12.9	25.4	25.7	31.7	82.8	3.7
John F. Kennedy	94	66.0	17.0	14.9	≤5.0	≤5.0	17.0	1.6
Col. Zadok Magruder	82	12.2	24.4	45.1	15.9	≤5.0	63.4	2.7
Richard Montgomery	313	9.3	17.6	26.5	21.1	25.6	73.2	3.4
Northwest	219	16.0	28.8	26.5	16.9	11.9	55.3	2.8
Northwood	56	25.0	25.0	23.2	8.9	17.9	50.0	2.7
Paint Branch	143	14.7	25.9	30.1	15.4	14.0	59.4	2.9
Poolesville	260	5.8	14.6	29.2	28.8	21.5	79.6	3.5
Quince Orchard	244	15.6	25.4	32.4	16.0	10.7	59.0	2.8
Rockville	94	7.4	26.6	34.0	18.1	13.8	66.0	3.0
Seneca Valley	123	16.3	16.3	35.8	19.5	12.2	67.5	3.0
Sherwood	225	≤5.0	16.4	25.8	20.9	32.0	78.7	3.6
Springbrook	120	26.7	25.0	25.0	14.2	9.2	48.3	2.5
Watkins Mill	52	9.6	17.3	34.6	26.9	11.5	73.1	3.1
Wheaton	104	22.1	23.1	34.6	11.5	8.7	54.8	2.6
Walt Whitman	405	≤5.0	13.3	24.9	24.4	34.8	84.2	3.8
Thomas S. Wootton	334	≤5.0	5.4	21.9	28.4	42.5	92.8	4.0

Note. Sum of percentages calculated from unrounded values may vary by ±0.1 points from rounded percentages. To comply with federal requirements, any percentage rates greater than or equal to 95.0% or less than or equal to 5.0% will be noted as ≥95.0 or ≤5.0, respectively. Additionally, results are not reported (--) for groups with fewer than 10 AP exams. For groups of between 10 and 20 AP exams, only the percentage rate will be reported.



Table B16  
2015 MCPS Advanced Placement European History:  
Number of Exams Taken; Percentage of Exam Scores of 1, 2, 3, 4, and 5; and Mean Exam Score by High School

High School	N Exams Taken	% Exam Scores of 1, 2, 3, 4, or 5					% Exam Scores 3 or Higher	Mean Exam Score
		% Score 1	% Score 2	% Score 3	% Score 4	% Score 5		
All	422	16.8	6.4	30.6	27.3	19.0	76.8	3.3
Bethesda-Chevy Chase	17	5.9	≤5.0	5.9	58.8	29.4	94.1	4.1
Montgomery Blair	27	≤5.0	≤5.0	29.6	37.0	33.3	≥95.0	4.0
James Hubert Blake	--	--	--	--	--	--	--	--
Winston Churchill	23	8.7	≤5.0	21.7	43.5	26.1	91.3	3.8
Clarksburg	25	56.0	20.0	20.0	≤5.0	≤5.0	24.0	1.8
Damascus	44	11.4	11.4	45.5	20.5	11.4	77.3	3.1
Albert Einstein	--	--	--	--	--	--	--	--
Gaithersburg	--	--	--	--	--	--	--	--
Walter Johnson	51	15.7	5.9	35.3	33.3	9.8	78.4	3.2
John F. Kennedy	--	--	--	--	--	--	--	--
Col. Zadok Magruder	--	--	--	--	--	--	--	--
Richard Montgomery	81	6.2	7.4	28.4	28.4	29.6	86.4	3.7
Northwest	28	17.9	≤5.0	57.1	21.4	≤5.0	78.6	2.8
Northwood	--	--	--	--	--	--	--	--
Paint Branch	--	--	--	--	--	--	--	--
Poolesville	--	--	--	--	--	--	--	--
Quince Orchard	22	27.3	9.1	36.4	18.2	9.1	63.6	2.7
Rockville	--	--	--	--	--	--	--	--
Seneca Valley	--	--	--	--	--	--	--	--
Sherwood	16	12.5	≤5.0	31.3	25.0	31.3	87.5	3.6
Springbrook	--	--	--	--	--	--	--	--
Watkins Mill	--	--	--	--	--	--	--	--
Wheaton	22	72.7	13.6	9.1	≤5.0	≤5.0	13.6	1.5
Walt Whitman	45	8.9	≤5.0	31.1	24.4	31.1	86.7	3.6
Thomas S. Wootton	19	15.8	≤5.0	15.8	52.6	15.8	84.2	3.5

*Note.* Sum of percentages calculated from unrounded values may vary by ±0.1 points from rounded percentages. To comply with federal requirements, any percentage rates greater than or equal to 95.0% or less than or equal to 5.0% will be noted as ≥95.0 or ≤5.0, respectively. Additionally, results are not reported (--) for groups with fewer than 10 AP exams. For groups of between 10 and 20 AP exams, only the percentage rate will be reported.

Table B17  
2015 MCPS Advanced Placement U.S. History:  
Number of Exams Taken; Percentage of Exam Scores of 1, 2, 3, 4, and 5; and Mean Exam Score by High School

High School	N Exams Taken	% Exam Scores of 1, 2, 3, 4, or 5					% Exam Scores 3 or Higher	Mean Exam Score
		% Score 1	% Score 2	% Score 3	% Score 4	% Score 5		
All	1,665	10.0	21.6	25.4	23.2	19.8	68.5	3.2
Bethesda-Chevy Chase	65	≤5.0	7.7	15.4	21.5	52.3	89.2	4.1
Montgomery Blair	17	≤5.0	5.9	23.5	23.5	47.1	94.1	4.1
James Hubert Blake	55	12.7	27.3	21.8	27.3	10.9	60.0	3.0
Winston Churchill	189	≤5.0	10.1	20.6	32.8	33.9	87.3	3.9
Clarksburg	73	9.6	24.7	26.0	28.8	11.0	65.8	3.1
Damascus	23	≤5.0	17.4	43.5	21.7	13.0	78.3	3.2
Albert Einstein	58	≤5.0	25.9	36.2	27.6	8.6	72.4	3.2
Gaithersburg	76	17.1	42.1	31.6	9.2	≤5.0	40.8	2.3
Walter Johnson	127	≤5.0	13.4	28.3	32.3	22.8	83.5	3.6
John F. Kennedy	25	52.0	36.0	12.0	≤5.0	≤5.0	12.0	1.6
Col. Zadok Magruder	32	≤5.0	21.9	21.9	37.5	15.6	75.0	3.4
Richard Montgomery	115	≤5.0	≤5.0	18.3	26.1	50.4	94.8	4.2
Northwest	63	9.5	20.6	39.7	23.8	6.3	69.8	3.0
Northwood	43	9.3	53.5	30.2	≤5.0	≤5.0	37.2	2.4
Paint Branch	29	6.9	20.7	55.2	10.3	6.9	72.4	2.9
Poolesville	31	≤5.0	9.7	35.5	25.8	29.0	90.3	3.7
Quince Orchard	121	28.1	37.2	27.3	≤5.0	≤5.0	34.7	2.2
Rockville	52	11.5	32.7	32.7	19.2	≤5.0	55.8	2.7
Seneca Valley	--	--	--	--	--	--	--	--
Sherwood	61	6.6	14.8	26.2	37.7	14.8	78.7	3.4
Springbrook	107	26.2	35.5	26.2	8.4	≤5.0	38.3	2.3
Watkins Mill	50	30.0	36.0	28.0	≤5.0	≤5.0	34.0	2.1
Wheaton	101	11.9	27.7	30.7	22.8	6.9	60.4	2.9
Walt Whitman	62	≤5.0	6.5	9.7	45.2	38.7	93.5	4.2
Thomas S. Wootton	90	≤5.0	8.9	7.8	35.6	47.8	91.1	4.2

Note. Sum of percentages calculated from unrounded values may vary by ±0.1 points from rounded percentages. To comply with federal requirements, any percentage rates greater than or equal to 95.0% or less than or equal to 5.0% will be noted as ≥95.0 or ≤5.0, respectively. Additionally, results are not reported (--) for groups with fewer than 10 AP exams. For groups of between 10 and 20 AP exams, only the percentage rate will be reported.

Table B18  
2015 MCPS Advanced Placement World History:  
Number of Exams Taken; Percentage of Exam Scores of 1, 2, 3, 4, and 5; and Mean Exam Score by High School

High School	N Exams Taken	% Exam Scores of 1, 2, 3, 4, or 5					% Exam Scores 3 or Higher	Mean Exam Score
		% Score 1	% Score 2	% Score 3	% Score 4	% Score 5		
All	3,011	5.7	20.3	35.9	24.0	14.0	74.0	3.2
Bethesda-Chevy Chase	85	≤5.0	9.4	32.9	37.6	17.6	88.2	3.6
Montgomery Blair	244	≤5.0	9.4	36.5	35.2	18.0	89.8	3.6
James Hubert Blake	123	≤5.0	16.3	39.0	30.1	13.0	82.1	3.4
Winston Churchill	238	≤5.0	8.0	31.1	33.6	26.1	90.8	3.8
Clarksburg	152	9.2	36.8	29.6	17.1	7.2	53.9	2.8
Damascus	115	≤5.0	20.9	52.2	21.7	≤5.0	78.3	3.1
Albert Einstein	70	≤5.0	22.9	34.3	30.0	8.6	72.9	3.2
Gaithersburg	--	--	--	--	--	--	--	--
Walter Johnson	315	≤5.0	12.7	30.8	29.2	26.7	86.7	3.7
John F. Kennedy	92	33.7	37.0	23.9	5.4	≤5.0	29.3	2.0
Col. Zadok Magruder	56	≤5.0	19.6	39.3	28.6	10.7	78.6	3.3
Richard Montgomery	161	13.0	33.5	35.4	13.0	≤5.0	53.4	2.6
Northwest	178	5.6	29.2	46.1	15.2	≤5.0	65.2	2.8
Northwood	43	≤5.0	39.5	27.9	18.6	11.6	58.1	3.0
Paint Branch	161	≤5.0	24.8	42.9	19.3	8.7	70.8	3.0
Poolesville	229	≤5.0	15.7	40.2	27.9	12.7	80.8	3.3
Quince Orchard	161	10.6	28.6	38.5	17.4	≤5.0	60.9	2.8
Rockville	15	≤5.0	20.0	53.3	26.7	≤5.0	80.0	3.1
Seneca Valley	27	18.5	40.7	29.6	≤5.0	7.4	40.7	2.4
Sherwood	178	≤5.0	22.5	41.0	23.6	9.0	73.6	3.1
Springbrook	67	13.4	32.8	35.8	10.4	7.5	53.7	2.7
Watkins Mill	--	--	--	--	--	--	--	--
Wheaton	96	27.1	29.2	28.1	11.5	≤5.0	43.8	2.4
Walt Whitman	67	≤5.0	≤5.0	9.0	28.4	61.2	≥95.0	4.5
Thomas S. Wootton	129	≤5.0	7.0	35.7	30.2	27.1	93.0	3.8

Note. Sum of percentages calculated from unrounded values may vary by ±0.1 points from rounded percentages. To comply with federal requirements, any percentage rates greater than or equal to 95.0% or less than or equal to 5.0% will be noted as ≥95.0 or ≤5.0, respectively. Additionally, results are not reported (--) for groups with fewer than 10 AP exams. For groups of between 10 and 20 AP exams, only the percentage rate will be reported.

Table B19  
2015 MCPS Advanced Placement Human Geography:  
Number of Exams Taken; Percentage of Exam Scores of 1, 2, 3, 4, and 5; and Mean Exam Score by High School

High School	N Exams Taken	% Exam Scores of 1, 2, 3, 4, or 5					% Exam Scores 3 or Higher	Mean Exam Score
		% Score 1	% Score 2	% Score 3	% Score 4	% Score 5		
All	647	13.3	11.9	18.4	31.5	24.9	74.8	3.4
Bethesda-Chevy Chase	--	--	--	--	--	--	--	--
Montgomery Blair	35	5.7	11.4	17.1	28.6	37.1	82.9	3.8
James Hubert Blake	23	8.7	8.7	13.0	34.8	34.8	82.6	3.8
Winston Churchill	181	8.3	8.8	19.3	38.7	24.9	82.9	3.6
Clarksburg	--	--	--	--	--	--	--	--
Damascus	--	--	--	--	--	--	--	--
Albert Einstein	54	20.4	16.7	33.3	27.8	≤5.0	63.0	2.7
Gaithersburg	--	--	--	--	--	--	--	--
Walter Johnson	39	≤5.0	5.1	15.4	20.5	56.4	92.3	4.2
John F. Kennedy	25	32.0	28.0	12.0	28.0	≤5.0	40.0	2.4
Col. Zadok Magruder	26	15.4	7.7	11.5	46.2	19.2	76.9	3.5
Richard Montgomery	33	9.1	15.2	18.2	30.3	27.3	75.8	3.5
Northwest	--	--	--	--	--	--	--	--
Northwood	--	--	--	--	--	--	--	--
Paint Branch	--	--	--	--	--	--	--	--
Poolesville	66	≤5.0	≤5.0	12.1	28.8	56.1	≥95.0	4.4
Quince Orchard	32	65.6	6.3	18.8	≤5.0	6.3	28.1	1.8
Rockville	19	31.6	26.3	15.8	15.8	10.5	42.1	2.5
Seneca Valley	--	--	--	--	--	--	--	--
Sherwood	21	19.0	14.3	9.5	42.9	14.3	66.7	3.2
Springbrook	--	--	--	--	--	--	--	--
Watkins Mill	--	--	--	--	--	--	--	--
Wheaton	--	--	--	--	--	--	--	--
Walt Whitman	26	≤5.0	11.5	11.5	46.2	26.9	84.6	3.8
Thomas S. Wootton	67	11.9	22.4	25.4	29.9	10.4	65.7	3.0

*Note.* Sum of percentages calculated from unrounded values may vary by ±0.1 points from rounded percentages. To comply with federal requirements, any percentage rates greater than or equal to 95.0% or less than or equal to 5.0% will be noted as ≥95.0 or ≤5.0, respectively. Additionally, results are not reported (--) for groups with fewer than 10 AP exams. For groups of between 10 and 20 AP exams, only the percentage rate will be reported.

Table B20  
2015 MCPS Advanced Placement Psychology:  
Number of Exams Taken; Percentage of Exam Scores of 1, 2, 3, 4, and 5; and Mean Exam Score by High School

High School	N Exams Taken	% Exam Scores of 1, 2, 3, 4, or 5					% Exam Scores 3 or Higher	Mean Exam Score
		% Score 1	% Score 2	% Score 3	% Score 4	% Score 5		
All	3,230	15.2	10.6	17.9	27.8	28.5	74.2	3.4
Bethesda-Chevy Chase	132	10.6	8.3	21.2	35.6	24.2	81.1	3.5
Montgomery Blair	172	7.6	7.6	20.3	27.9	36.6	84.9	3.8
James Hubert Blake	120	15.8	10.8	20.0	29.2	24.2	73.3	3.4
Winston Churchill	342	≤5.0	7.3	15.5	35.7	37.7	88.9	4.0
Clarksburg HS	138	18.1	19.6	20.3	23.2	18.8	62.3	3.1
Damascus	76	26.3	27.6	25.0	14.5	6.6	46.1	2.5
Albert Einstein	46	28.3	10.9	15.2	23.9	21.7	60.9	3.0
Gaithersburg	35	37.1	14.3	22.9	20.0	5.7	48.6	2.4
Walter Johnson	201	≤5.0	≤5.0	15.9	27.4	46.8	90.0	4.1
John F. Kennedy	37	37.8	21.6	16.2	16.2	8.1	40.5	2.4
Col. Zadok Magruder	52	5.8	7.7	25.0	25.0	36.5	86.5	3.8
Richard Montgomery	164	21.3	9.8	15.2	32.3	21.3	68.9	3.2
Northwest	131	25.2	15.3	19.8	19.8	19.8	59.5	2.9
Northwood	89	32.6	15.7	19.1	21.3	11.2	51.7	2.6
Paint Branch	146	20.5	15.1	20.5	26.0	17.8	64.4	3.1
Poolesville	144	9.7	8.3	18.8	23.6	39.6	81.9	3.8
Quince Orchard	162	21.0	12.3	22.2	25.9	18.5	66.7	3.1
Rockville	85	12.9	15.3	15.3	29.4	27.1	71.8	3.4
Seneca Valley	18	44.4	5.6	16.7	22.2	11.1	50.0	2.5
Sherwood	197	16.8	11.7	19.8	36.0	15.7	71.6	3.2
Springbrook	101	25.7	20.8	22.8	17.8	12.9	53.5	2.7
Watkins Mill	26	61.5	23.1	7.7	7.7	≤5.0	15.4	1.6
Wheaton	75	54.7	8.0	13.3	17.3	6.7	37.3	2.1
Walt Whitman	242	≤5.0	≤5.0	12.0	29.3	55.4	≥95.0	4.4
Thomas S. Wootton	299	7.4	6.7	15.4	32.1	38.5	86.0	3.9

Note. Sum of percentages calculated from unrounded values may vary by ±0.1 points from rounded percentages. To comply with federal requirements, any percentage rates greater than or equal to 95.0% or less than or equal to 5.0% will be noted as ≥95.0 or ≤5.0, respectively. Additionally, results are not reported (--) for groups with fewer than 10 AP exams. For groups of between 10 and 20 AP exams, only the percentage rate will be reported.

Table B21  
2015 MCPS Advanced Placement Computer Science A:  
Number of Exams Taken; Percentage of Exam Scores of 1, 2, 3, 4, and 5; and Mean Exam Score by High School

High School	N Exams Taken	% Exam Scores of 1, 2, 3, 4, or 5					% Exam Scores 3 or Higher	Mean Exam Score
		% Score 1	% Score 2	% Score 3	% Score 4	% Score 5		
All	612	18.5	5.9	12.4	24.8	38.4	75.7	3.6
Bethesda-Chevy Chase	16	18.8	≤5.0	12.5	68.8	≤5.0	81.3	3.3
Montgomery Blair	96	≤5.0	≤5.0	≤5.0	11.5	84.4	≥95.0	4.8
James Hubert Blake	19	26.3	15.8	26.3	10.5	21.1	57.9	2.8
Walt Churchill	48	≤5.0	≤5.0	14.6	43.8	37.5	≥95.0	4.1
Clarksburg	24	≤5.0	≤5.0	20.8	29.2	50.0	≥95.0	4.3
Damascus	21	57.1	19.0	9.5	14.3	≤5.0	23.8	1.8
Albert Einstein	--	--	--	--	--	--	--	--
Gaithersburg	--	--	--	--	--	--	--	--
Walter Johnson	35	11.4	8.6	14.3	48.6	17.1	80.0	3.5
John F. Kennedy	--	--	--	--	--	--	--	--
Col. Zadok Magruder	12	75.0	8.3	8.3	8.3	≤5.0	16.7	1.5
Richard Montgomery	39	20.5	≤5.0	20.5	25.6	33.3	79.5	3.5
Northwest	38	50.0	7.9	23.7	15.8	≤5.0	42.1	2.1
Northwood	--	--	--	--	--	--	--	--
Paint Branch	--	--	--	--	--	--	--	--
Poolesville	70	≤5.0	5.7	17.1	37.1	35.7	90.0	3.9
Quince Orchard	27	25.9	18.5	22.2	14.8	18.5	55.6	2.8
Rockville	--	--	--	--	--	--	--	--
Seneca Valley	--	--	--	--	--	--	--	--
Sherwood	12	41.7	16.7	25.0	≤5.0	16.7	41.7	2.3
Springbrook	28	57.1	7.1	14.3	14.3	7.1	35.7	2.1
Watkins Mill	--	--	--	--	--	--	--	--
Wheaton	22	59.1	≤5.0	9.1	22.7	9.1	40.9	2.2
Walt Whitman	18	5.6	11.1	16.7	33.3	33.3	83.3	3.8
Thomas S. Wootton	68	≤5.0	≤5.0	≤5.0	16.2	83.8	≥95.0	4.8

*Note.* Sum of percentages calculated from unrounded values may vary by ±0.1 points from rounded percentages. To comply with federal requirements, any percentage rates greater than or equal to 95.0% or less than or equal to 5.0% will be noted as ≥95.0 or ≤5.0, respectively. Additionally, results are not reported (--) for groups with fewer than 10 AP exams. For groups of between 10 and 20 AP exams, only the percentage rate will be reported.

Table B22  
2015 MCPS Advanced Placement Spanish Language:  
Number of Exams Taken; Percentage of Exam Scores of 1, 2, 3, 4, and 5; and Mean Exam Score by High School

High School	N Exams Taken	% Exam Scores of 1, 2, 3, 4, or 5					% Exam Scores 3 or Higher	Mean Exam Score
		% Score 1	% Score 2	% Score 3	% Score 4	% Score 5		
All	1,059	≤5.0	5.6	22.7	35.4	36.2	94.2	4.0
Bethesda-Chevy Chase	59	≤5.0	≤5.0	5.1	25.4	69.5	≥95.0	4.6
Montgomery Blair	59	≤5.0	≤5.0	6.8	23.7	69.5	≥95.0	4.6
James Hubert Blake	40	≤5.0	≤5.0	35.0	25.0	40.0	≥95.0	4.1
Winston Churchill	69	≤5.0	≤5.0	17.4	46.4	36.2	≥95.0	4.2
Clarksburg	20	≤5.0	≤5.0	10.0	35.0	55.0	≥95.0	4.5
Damascus	13	≤5.0	≤5.0	23.1	23.1	53.8	≥95.0	4.3
Albert Einstein	44	≤5.0	≤5.0	20.5	34.1	43.2	≥95.0	4.2
Gaithersburg	63	≤5.0	19.0	34.9	31.7	14.3	81.0	3.4
Walter Johnson	75	≤5.0	≤5.0	9.3	33.3	57.3	≥95.0	4.5
John F. Kennedy	16	≤5.0	6.3	12.5	50.0	31.3	93.8	4.1
Col. Zadok Magruder	42	≤5.0	≤5.0	21.4	50.0	28.6	≥95.0	4.1
Richard Montgomery	110	≤5.0	≤5.0	17.3	43.6	38.2	≥95.0	4.2
Northwest	31	≤5.0	9.7	25.8	29.0	35.5	90.3	3.9
Northwood	43	≤5.0	11.6	27.9	37.2	23.3	88.4	3.7
Paint Branch	21	≤5.0	≤5.0	9.5	57.1	28.6	≥95.0	4.1
Poolesville	19	≤5.0	≤5.0	10.5	36.8	52.6	≥95.0	4.4
Quince Orchard	52	≤5.0	9.6	46.2	25.0	19.2	90.4	3.5
Rockville	11	≤5.0	9.1	63.6	9.1	18.2	90.9	3.4
Seneca Valley	--	--	--	--	--	--	--	--
Sherwood	69	≤5.0	24.6	29.0	24.6	20.3	73.9	3.4
Springbrook	15	≤5.0	6.7	46.7	26.7	20.0	93.3	3.6
Watkins Mill	47	≤5.0	21.3	51.1	25.5	≤5.0	78.7	3.1
Wheaton	36	≤5.0	≤5.0	22.2	55.6	22.2	≥95.0	4.0
Walt Whitman	61	≤5.0	≤5.0	16.4	39.3	41.0	≥95.0	4.2
Thomas S. Wootton	43	≤5.0	≤5.0	20.9	51.2	27.9	≥95.0	4.1

Note. Sum of percentages calculated from unrounded values may vary by ±0.1 points from rounded percentages. To comply with federal requirements, any percentage rates greater than or equal to 95.0% or less than or equal to 5.0% will be noted as ≥95.0 or ≤5.0, respectively. Additionally, results are not reported (--) for groups with fewer than 10 AP exams. For groups of between 10 and 20 AP exams, only the percentage rate will be reported.