

2002 to 2006 AP Exam Participation and Performance of Montgomery County Public Schools Students Enrolled in 15 AP Courses

Clare Von Secker, Ph.D.

Background

Advanced Placement (AP) exam participation and performance are two of the strongest predictors of college coursework preparation and degree completion (Camara, 2003; Camara & Michaelides, 2005; Morgan & Ramist, 1998). Graduates who earn credit for AP courses and exams not only perform as well or better than non-AP graduates upon entry to college, but also are more likely to complete a bachelor's degree in four years or less (College Board, 2006a; Dougherty, Mellor & Shuling, 2006; Dodd, Fitzpatrick, De Ayala, & Jennings, 2002; Scammacca & Dodd, 2005).

The Montgomery County Public Schools (MCPS) uses AP participation and performance data to monitor attainment of Goal 1 of the MCPS strategic plan, *Our Call to Action: Pursuit of Excellence*, namely, to ensure success for every student (MCPS, 2006). Although AP exam participation of MCPS students increased significantly over the past five years, participation rates relative to the racial/ethnic composition of the MCPS high school population have held steady (Von Secker, 2007). African American and Hispanic students continue to be underrepresented among MCPS AP course enrollees and exam takers (Von Secker, 2006, 2007).

Examination of AP course enrollment patterns and trends can help to identify sources of racial/ethnic differences in AP representation. This research brief examines the AP exam participation and performance between 2002 and 2006 for MCPS students enrolled in the 15 most popular AP courses. These results can be used to inform discussions about how to increase AP course and exam taking among underrepresented African American and Hispanic student groups, thereby promoting and supporting Goal 1 of the MCPS strategic plan.

Methodology

AP course enrollment data at 24 MCPS high schools were drawn from fourth-quarter report cards issued

from June of 2002 to 2006. The AP courses included in this analysis were selected because 500 or more MCPS students were enrolled in each course in 2006 (Table A1). These 15 AP courses represented five subject areas, namely, English (2), foreign language (1), social studies (5), mathematics (3), and science (4). AP exam participation is reported for course enrollees only. Students who took an AP exam but were not registered for the accompanying course and students who were enrolled in less popular AP courses were excluded from these analyses.

AP performance is summarized as the number and percentage of AP course enrollees who attained exam scores of 3 or higher. An AP exam performance standard of 3 or higher is the same standard used by the College Board and supported by research (College Board, 2006a; Geiser & Santelices, 2004). An AP exam score of 3 or higher represents a grade of C or better in a corresponding college course.

Results

In 2006, more African American and Hispanic students than ever before were enrolled in AP courses (Table A2). Between 2002 and 2006, the percentage of African American and Hispanic students enrolled in the 15 most popular AP courses increased by 2.0 and 3.0 percentage points, respectively (Figure 1).

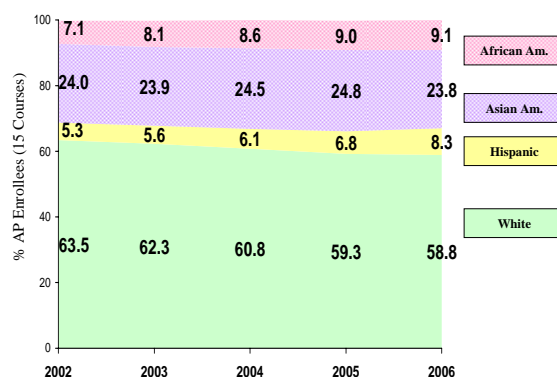


Figure 1. Percentages of MCPS students enrolled in the 15 most popular AP courses by year and race/ethnicity.

Although total AP course enrollment among African American and Hispanic students increased over the past five years, most of the gains occurred in four courses—AP Psychology, AP World History, AP English Language and Composition, and AP Spanish Language (Table A2). Between 2002 and 2006, African American AP enrollment increased by at least 100 students and 2.0 percentage points in three courses—AP Psychology, AP World History, and AP English Language and Composition. Between 2002 and 2006, Hispanic AP enrollment increased by at least 100 students and 3.0 percentage points in two courses—AP Spanish Language and AP World History.

More than 80% of students enrolled in the 15 most popular AP courses took the respective AP exam each year, but rates for Asian American and White students were about 10 percentage points higher than rates for African American and Hispanic students (Table 1). Racial/ethnic differences in AP exam participation also occurred in the AP courses most popular with African American and Hispanic students (Table A2).

Table 1
Percentage of MCPS Enrollees in the 15 Most Popular AP Courses Who Took the AP Exam by Year and Race/Ethnicity

Race/Ethnicity	% Enrollees Took AP Exam				
	2002	2003	2004	2005	2006
All Students	80.6	81.3	81.2	83.4	84.2
African Am.	71.8	74.2	69.0	71.3	75.7
Asian Am.	82.1	83.4	83.9	86.1	86.8
Hispanic	70.9	69.3	70.7	79.2	76.2
White	81.8	82.5	82.8	84.6	85.7

In 2006, more African American students enrolled in AP Psychology than in any other AP course. However, just 66.5% of African American enrollees took the AP Psychology exam, compared with more than 85% of Asian American and White students. In 2006, AP Spanish Language was the most popular AP course among Hispanic students. However, 69.7% of Hispanic students took the AP Spanish Language exam, compared with 75.1% of White students.

Between 2002 and 2006, about three fourths of all MCPS AP exam takers received scores of 3 or higher on all exams combined (Table 2). The five-year decline of about five points in the percentage of exam takers who received scores of 3 or higher was unremarkable because each year the pool of exam takers included a greater number of students with

more diverse mastery of course content (Whittington, 2004; Von Secker, 2007).

AP exam performance of African American and Hispanic students lagged behind that of Asian American and White students. About one half of African American and about two thirds of Hispanic AP exam takers received scores of 3 or higher on all exams combined compared with more than three quarters of Asian American and White students. Racial/ethnic differences in AP exam performance were evident even among students enrolled in the same AP course (Table A3).

Table 2
Percentage of MCPS AP Exam Takers in the 15 Most Popular AP Courses Who Scored 3 or Higher by Year and Race/Ethnicity

Race/Ethnicity	% Exam Takers With Scores of 3 or Higher				
	2002	2003	2004	2005	2006
All Students	79.1	74.4	75.0	75.8	73.8
African Am.	54.9	51.0	52.8	52.2	47.1
Asian Am.	76.3	72.3	72.3	75.0	74.5
Hispanic	67.7	61.7	63.1	61.0	62.0
White	83.3	78.9	79.7	80.8	78.7

One of the most significant changes in AP exam performance over the past five years occurred in AP World History (Figure 2). Between 2002 and 2005, the percentage of African American and Hispanic AP exam takers who scored 3 or higher held steady at about two thirds. In 2006, only 42.2% of African American and 53.6% of Hispanic AP World History exam takers scored 3 or higher. These changes, as well as smaller declines for Asian American and White students, can be traced to increases in AP participation.

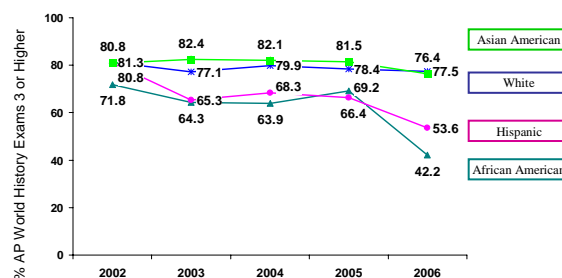


Figure 2. Percentages MCPS AP World History exam takers who scored 3 or higher by year and race/ethnicity.

Between 2005 and 2006, the number of African American students who took the AP World History exam increased by 56% (from 156 to 244), and the

percentage of exam scores of 3 or higher fell 27.0 points. The number of Hispanic students who took the AP World History exam increased 16% between 2005 (143) and 2006 (166), and the percentage of exam scores of 3 or higher fell 12.8 points. AP World History exam participation among Asian American and White students increased about 5% between 2005 and 2006, and the percentages of AP exam scores of 3 or higher fell 0.9 and 5.1 points, respectively.

Discussion

The AP exam data reflect both the successes and challenges of MCPS efforts to increase rigorous AP course taking. Between 2002 and 2006, AP enrollment in the 15 most popular AP courses more than doubled, and AP exam participation increased 90%. However, compared with Asian American and White students, AP representation among African American and Hispanic students was limited to a few English, social studies, and Spanish courses. Over the past five years, fewer than 100 African American and Hispanic students per year took the AP exam for any mathematics or science course.

Recommendations

Racial/ethnic differences in AP exam performance—even among students who are enrolled in the same course—highlight the need to provide additional support for students who may be less prepared for AP courses than their peers. This support must begin in elementary and middle school (College Board, 2006b). AP preparation prior to Grade 9 includes development of strong reading, writing, and critical thinking skills in the elementary and middle grades, as well as strong preparation in algebra and physical science in Grades 6 to 8 (College Board, 2006b).

AP performance of all students could be enhanced through AP teacher participation in the professional development workshops and summer institutes offered by the College Board. These professional development programs provide a solid foundation for effective instruction and fidelity of AP program implementation, and enable students to meet better the standards for college-level learning in AP subjects (College Board, 2006b).

Tables B1 to B15 provide school-level snapshots of the 2006 AP participation and performance in the 15 most popular courses for MCPS students of different races/ethnicities. These data can inform discussions among MCPS district leaders, school administrators, counselors, and teachers about the school policies and practices that contribute to AP success for all students.

References

- Camara, W. J. (2003). *College persistence, graduation, and remediation*. New York: College Board.
- Camara, W. J., & Michaelides, M. (2005). *AP use in admissions: A response to Geiser and Santelices*. New York: College Board.
- College Board. (2006a). *Advanced placement report to the nation 2006*. New York: Author.
- College Board. (2006b). *Frequently asked questions about the AP program*. New York: Author.
- Dodd, B. G., Fitzpatrick, S. J., De Ayala, R. J., & Jennings, J.A. (2002). *An investigation of the validity of AP grades of 3 and a comparison of AP and non-AP graduate groups*. New York: College Board.
- Dougherty, C., Mellor, L., & Shuling, J. (2006). *The relationship between advanced placement and college graduation*. Austin: National Center for Educational Accountability.
- Geiser, S., & Santelices, V. (2004). *The role of advanced placement and honors courses in college admissions*. Berkeley: Center for Studies in Higher Education.
- Montgomery County Public Schools. (2006). *Our call to action: Pursuit of excellence. The strategic plan for the Montgomery County Public Schools 2006–2011*. Rockville, MD: Author.
- Morgan, R., & Ramist, L. (1998). *Advanced placement graduates in college: An investigation of course grades at 21 colleges*. Princeton: Educational Testing Service.
- Scammacca, N. K., & Dodd, B. G. (2005). *An investigation of educational outcomes for graduates who earn college credit through the college-level examination program*. New York: College Board.
- Von Secker, C. (2006). *Advanced placement exam participation and performance for the MCPS classes of 2002 to 2006*. Rockville, MD: Montgomery County Public Schools.
- Von Secker, C. (2007). *AP exam participation and performance from 2002 to 2006 for students enrolled in the Montgomery County Public Schools and public schools in Maryland and the nation*. Rockville, MD: Montgomery County Public Schools.
- Whittington, D. (2004). The achievement gap: Should we rely on SAT scores to tell us anything about it? *Education Policy Analysis Archives*, 12(12). <http://epaa.asu.edu/epaa>

THIS PAGE IS LEFT BLANK INTENTIONALLY

Table A1
Number and Percentage of MCPS Enrollees in the 15 Most Popular AP Courses in June 2006
Who Took the AP Exam in May by AP Course and Race/Ethnicity

AP Course in Order of Popularity with All Students (Social Studies, English, Mathematics, Science, Foreign Language)	<u>All Students</u>			<u>African American</u>			<u>Asian American</u>			<u>Hispanic</u>			<u>White</u>		
	<i>N</i> Enroll AP	<i>N</i> Took Exam	% Took Exam	<i>N</i> Enroll AP	<i>N</i> Took Exam	% Took Exam	<i>N</i> Enroll AP	<i>N</i> Took Exam	% Took Exam	<i>N</i> Enroll AP	<i>N</i> Took Exam	% Took Exam	<i>N</i> Enroll AP	<i>N</i> Took Exam	% Took Exam
15 Courses Combined	21649	18233	84.2	1970	1491	75.7	5136	4458	86.8	1804	1375	76.2	12711	10887	85.7
AP Psychology	3087	2540	82.3	352	234	66.5	642	552	86.0	249	183	73.5	1843	1571	85.2
AP World History	2611	2325	89.0	300	244	81.3	555	519	93.5	195	166	85.1	1554	1390	89.4
AP English Lang. & Comp.	2358	2205	93.5	268	231	86.2	532	495	93.0	145	130	89.7	1409	1346	95.5
AP U.S. Govt. and Politics	2336	2141	91.7	216	184	85.2	542	510	94.1	159	130	81.8	1413	1311	92.8
AP English Lit. & Comp.	2193	1855	84.6	246	183	74.4	467	404	86.5	148	119	80.4	1331	1148	86.3
AP Statistics	1240	964	77.7	89	57	64.0	334	282	84.4	92	66	71.7	725	559	77.1
AP Calculus AB	1137	953	83.8	69	56	81.2	284	233	82.0	76	64	84.2	706	600	85.0
AP Calculus BC	1049	930	88.7	49	37	75.5	395	361	91.4	51	39	76.5	551	490	88.9
AP U.S. History	1034	880	85.1	82	58	70.7	205	183	89.3	68	47	69.1	678	592	87.3
AP Environmental Science	1009	709	70.3	70	38	54.3	142	104	73.2	63	41	65.1	734	526	71.7
AP Biology (Double Pd.)	978	896	91.6	90	81	90.0	409	373	91.2	61	56	91.8	416	384	92.3
AP Spanish Language	790	568	71.9	41	27	65.9	83	61	73.5	373	260	69.7	293	220	75.1
AP Chemistry (Double Pd.)	674	621	92.1	40	34	85.0	296	275	92.9	42	31	73.8	295	280	94.9
AP European History	638	554	86.8	34	26	76.5	89	82	92.1	47	39	83.0	468	407	87.0
AP Physics	515	92	17.9	24	1	4.2	161	24	14.9	35	4	11.4	295	63	21.4

Note: American Indian students are included with all students but are not reported separately.

Table A2
Number and Percentage of MCPS Semester 2 Enrollees in the 15 Most Popular AP Courses
Who Took the AP Exam in May by AP Course, Year, and Race/Ethnicity

Semester 2 AP Course by Subject	AP Exam Year	All Students			African American			Asian American			Hispanic			White		
		<i>N</i> Enroll AP	<i>N</i> Took Exam	% Took Exam	<i>N</i> Enroll AP	<i>N</i> Took Exam	% Took Exam	<i>N</i> Enroll AP	<i>N</i> Took Exam	% Took Exam	<i>N</i> Enroll AP	<i>N</i> Took Exam	% Took Exam	<i>N</i> Enroll AP	<i>N</i> Took Exam	% Took Exam
15 Courses Combined	2002	12468	10050	80.6	888	638	71.8	2987	2452	82.1	663	470	70.9	7910	6471	81.8
	2003	16529	13436	81.3	1342	996	74.2	3951	3295	83.4	931	645	69.3	10280	8479	82.5
	2004	18399	14934	81.2	1582	1091	69.0	4504	3781	83.9	1120	792	70.7	11175	9254	82.8
	2005	19258	16061	83.4	1740	1240	71.3	4767	4103	86.1	1314	1041	79.2	11406	9652	84.6
	2006	21649	18233	84.2	1970	1491	75.7	5136	4458	86.8	1804	1375	76.2	12711	10887	85.7
AP English Language and Composition	2002	1515	1406	92.8	134	116	86.6	321	303	94.4	59	49	83.1	998	935	93.7
	2003	2125	1992	93.7	222	195	87.8	475	449	94.5	95	81	85.3	1329	1264	95.1
	2004	2219	2070	93.3	240	208	86.7	533	501	94.0	95	83	87.4	1348	1275	94.6
	2005	2254	2115	93.8	207	172	83.1	528	501	94.9	130	125	96.2	1386	1314	94.8
	2006	2358	2205	93.5	268	231	86.2	532	495	93.0	145	130	89.7	1409	1346	95.5
AP English Literature and Composition	2002	1674	1407	84.1	152	119	78.3	372	317	85.2	100	75	75.0	1048	894	85.3
	2003	1946	1576	81.0	206	153	74.3	413	354	85.7	92	69	75.0	1231	996	80.9
	2004	2245	1721	76.7	261	167	64.0	466	384	82.4	123	78	63.4	1393	1091	78.3
	2005	2148	1700	79.1	254	176	69.3	469	393	83.8	114	87	76.3	1304	1039	79.7
	2006	2193	1855	84.6	246	183	74.4	467	404	86.5	148	119	80.4	1331	1148	86.3
AP Spanish Language	2002	302	244	80.8	10	5	50.0	47	42	89.4	83	57	68.7	159	137	86.2
	2003	515	399	77.5	12	9	75.0	66	57	86.4	179	134	74.9	258	199	77.1
	2004	487	395	81.1	13	10	76.9	44	38	86.4	213	167	78.4	216	179	82.9
	2005	611	496	81.2	28	17	60.7	71	57	80.3	230	182	79.1	281	239	85.1
	2006	790	568	71.9	41	27	65.9	83	61	73.5	373	260	69.7	293	220	75.1

(continued)

Table A2
Number and Percentage of MCPS Semester 2 Enrollees in the 15 Most Popular AP Courses
Who Took the AP Exam in May by AP Course, Year, and Race/Ethnicity

Semester 2 AP Course by Subject	AP Exam Year	<u>All Students</u>			<u>African American</u>			<u>Asian American</u>			<u>Hispanic</u>			<u>White</u>		
		<i>N</i> Enroll AP	<i>N</i> Took Exam	% Took Exam	<i>N</i> Enroll AP	<i>N</i> Took Exam	% Took Exam	<i>N</i> Enroll AP	<i>N</i> Took Exam	% Took Exam	<i>N</i> Enroll AP	<i>N</i> Took Exam	% Took Exam	<i>N</i> Enroll AP	<i>N</i> Took Exam	% Took Exam
AP Psychology	2002	1945	1526	78.5	170	115	67.6	378	315	83.3	115	74	64.3	1277	1018	79.7
	2003	2502	1970	78.7	258	174	67.4	492	411	83.5	161	97	60.2	1589	1286	80.9
	2004	2553	1962	76.9	257	153	59.5	531	435	81.9	154	86	55.8	1609	1287	80.0
	2005	2590	2084	80.5	327	211	64.5	528	442	83.7	178	136	76.4	1556	1294	83.2
	2006	3087	2540	82.3	352	234	66.5	642	552	86.0	249	183	73.5	1843	1571	85.2
AP U.S. History	2002	933	804	86.2	76	44	57.9	160	144	90.0	48	34	70.8	648	581	89.7
	2003	977	832	85.2	55	34	61.8	185	167	90.3	50	33	66.0	686	597	87.0
	2004	1034	850	82.2	86	59	68.6	227	190	83.7	42	29	69.0	678	571	84.2
	2005	890	732	82.2	81	51	63.0	186	163	87.6	50	41	82.0	573	477	83.2
	2006	1034	880	85.1	82	58	70.7	205	183	89.3	68	47	69.1	678	592	87.3
AP U.S. Government and Politics	2002	No MCPS students were enrolled in this course in 2002.														
	2003	1377	1267	92.0	104	89	85.6	325	303	93.2	54	37	68.5	891	836	93.8
	2004	1682	1485	88.3	126	97	77.0	392	355	90.6	104	82	78.8	1057	948	89.7
	2005	1910	1785	93.5	172	145	84.3	435	407	93.6	134	114	85.1	1167	1117	95.7
	2006	2336	2141	91.7	216	184	85.2	542	510	94.1	159	130	81.8	1413	1311	92.8
AP World History	2002	1631	1343	82.3	121	85	70.2	392	336	85.7	69	52	75.4	1047	868	82.9
	2003	1959	1630	83.2	179	140	78.2	478	398	83.3	96	72	75.0	1203	1018	84.6
	2004	2283	1958	85.8	228	166	72.8	577	521	90.3	133	101	75.9	1341	1166	87.0
	2005	2394	2092	87.4	207	156	75.4	540	491	90.9	171	143	83.6	1473	1299	88.2
	2006	2611	2325	89.0	300	244	81.3	555	519	93.5	195	166	85.1	1554	1390	89.4

(continued)

Table A2
Number and Percentage of MCPS Semester 2 Enrollees in the 15 Most Popular AP Courses
Who Took the AP Exam in May by AP Course, Year, and Race/Ethnicity

Semester 2 AP Course by Subject	AP Exam Year	<u>All Students</u>			<u>African American</u>			<u>Asian American</u>			<u>Hispanic</u>			<u>White</u>		
		<i>N</i> Enroll AP	<i>N</i> Took Exam	% Took Exam	<i>N</i> Enroll AP	<i>N</i> Took Exam	% Took Exam	<i>N</i> Enroll AP	<i>N</i> Took Exam	% Took Exam	<i>N</i> Enroll AP	<i>N</i> Took Exam	% Took Exam	<i>N</i> Enroll AP	<i>N</i> Took Exam	% Took Exam
AP European History	2002	481	398	82.7	13	9	69.2	73	61	83.6	29	20	69.0	366	308	84.2
	2003	473	347	73.4	19	12	63.2	70	51	72.9	28	16	57.1	354	266	75.1
	2004	592	468	79.1	24	15	62.5	97	79	81.4	29	21	72.4	442	353	79.9
	2005	546	446	81.7	17	12	70.6	84	68	81.0	30	25	83.3	414	340	82.1
	2006	638	554	86.8	34	26	76.5	89	82	92.1	47	39	83.0	468	407	87.0
AP Calculus AB	2002	544	427	78.5	28	21	75.0	126	91	72.2	19	15	78.9	370	299	80.8
	2003	787	637	80.9	46	33	71.7	198	162	81.8	34	23	67.6	508	418	82.3
	2004	910	708	77.8	57	31	54.4	217	168	77.4	39	28	71.8	597	481	80.6
	2005	1018	858	84.3	65	51	78.5	297	259	87.2	39	28	71.8	616	519	84.3
	2006	1137	953	83.8	69	56	81.2	284	233	82.0	76	64	84.2	706	600	85.0
AP Calculus BC	2002	838	692	82.6	31	23	74.2	305	247	81.0	30	22	73.3	472	400	84.7
	2003	884	726	82.1	32	25	78.1	342	275	80.4	23	14	60.9	487	412	84.6
	2004	948	846	89.2	39	31	79.5	349	304	87.1	22	14	63.6	538	497	92.4
	2005	992	891	89.8	41	31	75.6	406	366	90.1	35	30	85.7	507	461	90.9
	2006	1049	930	88.7	49	37	75.5	395	361	91.4	51	39	76.5	551	490	88.9
AP Statistics	2002	766	571	74.5	38	25	65.8	231	188	81.4	21	14	66.7	475	343	72.2
	2003	845	620	73.4	53	29	54.7	203	159	78.3	35	18	51.4	554	414	74.7
	2004	970	759	78.2	91	54	59.3	241	208	86.3	42	26	61.9	596	471	79.0
	2005	1105	829	75.0	105	62	59.0	260	212	81.5	70	44	62.9	667	509	76.3
	2006	1240	964	77.7	89	57	64.0	334	282	84.4	92	66	71.7	725	559	77.1

(continued)

Table A2
Number and Percentage of MCPS Semester 2 Enrollees in the 15 Most Popular AP Courses
Who Took the AP Exam in May by AP Course, Year, and Race/Ethnicity

Semester 2 AP Course by Subject	AP Exam Year	<u>All Students</u>			<u>African American</u>			<u>Asian American</u>			<u>Hispanic</u>			<u>White</u>		
		<i>N</i> Enroll AP	<i>N</i> Took Exam	% Took Exam	<i>N</i> Enroll AP	<i>N</i> Took Exam	% Took Exam	<i>N</i> Enroll AP	<i>N</i> Took Exam	% Took Exam	<i>N</i> Enroll AP	<i>N</i> Took Exam	% Took Exam	<i>N</i> Enroll AP	<i>N</i> Took Exam	% Took Exam
AP Biology (Double Period)	2002	621	540	87.0	68	55	80.9	240	212	88.3	38	30	78.9	274	242	88.3
	2003	603	522	86.6	71	60	84.5	235	213	90.6	25	14	56.0	270	233	86.3
	2004	852	748	87.8	79	57	72.2	332	302	91.0	44	28	63.6	396	360	90.9
	2005	902	814	90.2	100	84	84.0	397	372	93.7	42	32	76.2	363	326	89.8
	2006	978	896	91.6	90	81	90.0	409	373	91.2	61	56	91.8	416	384	92.3
AP Chemistry (Double Period)	2002	430	391	90.9	14	11	78.6	152	133	87.5	14	13	92.9	250	234	93.6
	2003	534	471	88.2	29	21	72.4	232	214	92.2	14	12	85.7	258	223	86.4
	2004	479	419	87.5	27	21	77.8	200	172	86.0	14	12	85.7	238	214	89.9
	2005	601	544	90.5	41	32	78.0	261	238	91.2	26	24	92.3	271	248	91.5
	2006	674	621	92.1	40	34	85.0	296	275	92.9	42	31	73.8	295	280	94.9
AP Physics	2002	396	84	21.2	10	1	10.0	116	20	17.2	17	2	11.8	253	61	24.1
	2003	459	91	19.8	11	0	0.0	163	30	18.4	16	4	25.0	269	57	21.2
	2004	540	106	19.6	24	5	20.8	186	37	19.9	23	5	21.7	307	59	19.2
	2005	525	111	21.1	35	7	20.0	169	29	17.2	23	5	21.7	295	70	23.7
	2006	515	92	17.9	24	1	4.2	161	24	14.9	35	4	11.4	295	63	21.4
AP Environmental Science	2002	392	217	55.4	23	9	39.1	74	43	58.1	21	13	61.9	273	151	55.3
	2003	543	356	65.6	45	22	48.9	74	52	70.3	29	21	72.4	393	260	66.2
	2004	605	439	72.6	30	17	56.7	112	87	77.7	43	32	74.4	419	302	72.1
	2005	772	564	73.1	60	33	55.0	136	105	77.2	42	25	59.5	533	400	75.0
	2006	1009	709	70.3	70	38	54.3	142	104	73.2	63	41	65.1	734	526	71.7

Note: AP course enrollment data were drawn from report cards issued in June of each year. AP exam results are drawn from MCPS official records as of October 2006. AP exam results are not reported (n/r) for groups with fewer than five course enrollees. American Indian students are included with all students but are not reported separately.

Table A3
Number and Percentage of MCPS AP Exam Takers in the 15 Most Popular AP Courses Who Scored 3 or Higher by AP Course, Year, and Race/Ethnicity

Semester 2 AP Course by Subject	AP Exam Year	<u>All Students</u>			<u>African American</u>			<u>Asian American</u>			<u>Hispanic</u>			<u>White</u>		
		<i>N</i> Took Exam	<i>N</i> 3 or Higher	% 3 or Higher	<i>N</i> Took Exam	<i>N</i> 3 or Higher	% 3 or Higher	<i>N</i> Took Exam	<i>N</i> 3 or Higher	% 3 or Higher	<i>N</i> Took Exam	<i>N</i> 3 or Higher	% 3 or Higher	<i>N</i> Took Exam	<i>N</i> 3 or Higher	% 3 or Higher
15 Courses Combined	2002	10050	7945	79.1	638	350	54.9	2452	1870	76.3	470	318	67.7	6471	5393	83.3
	2003	13436	9993	74.4	996	508	51.0	3295	2382	72.3	645	398	61.7	8479	6690	78.9
	2004	14934	11195	75.0	1091	576	52.8	3781	2734	72.3	792	500	63.1	9254	7372	79.7
	2005	16061	12178	75.8	1240	647	52.2	4103	3079	75.0	1041	635	61.0	9652	7796	80.8
	2006	18233	13461	73.8	1491	702	47.1	4458	3321	74.5	1375	853	62.0	10887	8571	78.7
AP English Language and Composition	2002	1406	1082	77.0	116	53	45.7	303	212	70.0	49	29	59.2	935	786	84.1
	2003	1992	1486	74.6	195	98	50.3	449	317	70.6	81	43	53.1	1264	1025	81.1
	2004	2070	1485	71.7	208	86	41.3	501	353	70.5	83	42	50.6	1275	1002	78.6
	2005	2115	1615	76.4	172	90	52.3	501	364	72.7	125	69	55.2	1314	1091	83.0
	2006	2205	1457	66.1	231	91	39.4	495	331	66.9	130	58	44.6	1346	976	72.5
AP English Literature and Composition	2002	1407	1055	75.0	119	60	50.4	317	220	69.4	75	36	48.0	894	737	82.4
	2003	1576	1018	64.6	153	49	32.0	354	223	63.0	69	27	39.1	996	716	71.9
	2004	1721	1209	70.2	167	67	40.1	384	253	65.9	78	33	42.3	1091	855	78.4
	2005	1700	1216	71.5	176	67	38.1	393	257	65.4	87	44	50.6	1039	844	81.2
	2006	1855	1371	73.9	183	79	43.2	404	284	70.3	119	64	53.8	1148	943	82.1
AP Spanish Language	2002	244	209	85.7	5	5	100.0	42	33	78.6	57	56	98.2	137	113	82.5
	2003	399	345	86.5	9	5	55.6	57	40	70.2	134	132	98.5	199	168	84.4
	2004	395	345	87.3	10	7	70.0	38	30	78.9	167	165	98.8	179	143	79.9
	2005	496	417	84.1	17	13	76.5	57	40	70.2	182	168	92.3	239	195	81.6
	2006	568	491	86.4	27	15	55.6	61	53	86.9	260	250	96.2	220	173	78.6

(continued)

Table A3
Number and Percentage of MCPS AP Exam Takers in the 15 Most Popular AP Courses Who Scored 3 or Higher by AP Course, Year, and Race/Ethnicity

Semester 2 AP Course by Subject	AP Exam Year	<u>All Students</u>			<u>African American</u>			<u>Asian American</u>			<u>Hispanic</u>			<u>White</u>		
		<i>N</i> Took Exam	<i>N</i> 3 or Higher	% 3 or Higher	<i>N</i> Took Exam	<i>N</i> 3 or Higher	% 3 or Higher	<i>N</i> Took Exam	<i>N</i> 3 or Higher	% 3 or Higher	<i>N</i> Took Exam	<i>N</i> 3 or Higher	% 3 or Higher	<i>N</i> Took Exam	<i>N</i> 3 or Higher	% 3 or Higher
AP Psychology	2002	1526	1216	79.7	115	68	59.1	315	249	79.0	74	49	66.2	1018	847	83.2
	2003	1970	1526	77.5	174	109	62.6	411	306	74.5	97	45	46.4	1286	1065	82.8
	2004	1962	1580	80.5	153	102	66.7	435	329	75.6	86	50	58.1	1287	1098	85.3
	2005	2084	1576	75.6	211	124	58.8	442	327	74.0	136	71	52.2	1294	1053	81.4
	2006	2540	1892	74.5	234	123	52.6	552	416	75.4	183	99	54.1	1571	1254	79.8
AP U.S. History	2002	804	654	81.3	44	27	61.4	144	114	79.2	34	22	64.7	581	490	84.3
	2003	832	578	69.5	34	17	50.0	167	121	72.5	33	12	36.4	597	427	71.5
	2004	850	641	75.4	59	35	59.3	190	150	78.9	29	18	62.1	571	437	76.5
	2005	732	514	70.2	51	24	47.1	163	122	74.8	41	18	43.9	477	350	73.4
	2006	880	707	80.3	58	35	60.3	183	148	80.9	47	26	55.3	592	498	84.1
AP U.S. Government and Politics	2002	No MCPS students were enrolled in this course in 2002.														
	2003	1267	869	68.6	89	42	47.2	303	200	66.0	37	20	54.1	836	605	72.4
	2004	1485	1007	67.8	97	49	50.5	355	219	61.7	82	33	40.2	948	704	74.3
	2005	1785	1273	71.3	145	60	41.4	407	286	70.3	114	45	39.5	1117	881	78.9
	2006	2141	1536	71.7	184	91	49.5	510	370	72.5	130	69	53.1	1311	1003	76.5
AP World History	2002	1343	1079	80.3	85	61	71.8	336	273	81.3	52	42	80.8	868	701	80.8
	2003	1630	1284	78.8	140	90	64.3	398	307	77.1	72	47	65.3	1018	839	82.4
	2004	1958	1552	79.3	166	106	63.9	521	416	79.8	101	69	68.3	1166	957	82.1
	2005	2092	1650	78.9	156	108	69.2	491	385	78.4	143	95	66.4	1299	1059	81.5
	2006	2325	1659	71.4	244	103	42.2	519	402	77.5	166	89	53.6	1390	1062	76.4

(continued)

Table A3
Number and Percentage of MCPS AP Exam Takers in the 15 Most Popular AP Courses Who Scored 3 or Higher by AP Course, Year, and Race/Ethnicity

Semester 2 AP Course by Subject	AP Exam Year	<u>All Students</u>			<u>African American</u>			<u>Asian American</u>			<u>Hispanic</u>			<u>White</u>		
		<i>N</i> Took Exam	<i>N</i> 3 or Higher	% 3 or Higher	<i>N</i> Took Exam	<i>N</i> 3 or Higher	% 3 or Higher	<i>N</i> Took Exam	<i>N</i> 3 or Higher	% 3 or Higher	<i>N</i> Took Exam	<i>N</i> 3 or Higher	% 3 or Higher	<i>N</i> Took Exam	<i>N</i> 3 or Higher	% 3 or Higher
AP European History	2002	398	347	87.2	9	5	55.6	61	51	83.6	20	14	70.0	308	277	89.9
	2003	347	299	86.2	12	7	58.3	51	40	78.4	16	12	75.0	266	239	89.8
	2004	468	388	82.9	15	10	66.7	79	61	77.2	21	15	71.4	353	302	85.6
	2005	446	363	81.4	12	6	50.0	68	58	85.3	25	17	68.0	340	281	82.6
	2006	554	454	81.9	26	17	65.4	82	64	78.0	39	28	71.8	407	345	84.8
AP Calculus AB	2002	427	371	86.9	21	14	66.7	91	70	76.9	15	15	100.0	299	272	91.0
	2003	637	541	84.9	33	26	78.8	162	130	80.2	23	17	73.9	418	367	87.8
	2004	708	495	69.9	31	17	54.8	168	99	58.9	28	12	42.9	481	367	76.3
	2005	858	639	74.5	51	23	45.1	259	193	74.5	28	17	60.7	519	405	78.0
	2006	953	698	73.2	56	26	46.4	233	159	68.2	64	39	60.9	600	474	79.0
AP Calculus BC	2002	692	567	81.9	23	10	43.5	247	197	79.8	22	15	68.2	400	345	86.3
	2003	726	593	81.7	25	16	64.0	275	218	79.3	14	8	57.1	412	351	85.2
	2004	846	680	80.4	31	13	41.9	304	230	75.7	14	8	57.1	497	429	86.3
	2005	891	744	83.5	31	21	67.7	366	295	80.6	30	15	50.0	461	410	88.9
	2006	930	761	81.8	37	25	67.6	361	281	77.8	39	29	74.4	490	423	86.3
AP Statistics	2002	571	419	73.4	25	11	44.0	188	140	74.5	14	3	21.4	343	264	77.0
	2003	620	450	72.6	29	9	31.0	159	124	78.0	18	10	55.6	414	307	74.2
	2004	759	531	70.0	54	28	51.9	208	151	72.6	26	14	53.8	471	338	71.8
	2005	829	576	69.5	62	24	38.7	212	145	68.4	44	23	52.3	509	382	75.0
	2006	964	661	68.6	57	27	47.4	282	196	69.5	66	26	39.4	559	412	73.7

(continued)

Table A3
Number and Percentage of MCPS AP Exam Takers in the 15 Most Popular AP Courses Who Scored 3 or Higher by AP Course, Year, and Race/Ethnicity

Semester 2 AP Course by Subject	AP Exam Year	<u>All Students</u>			<u>African American</u>			<u>Asian American</u>			<u>Hispanic</u>			<u>White</u>		
		<i>N</i> Took Exam	<i>N</i> 3 or Higher	% 3 or Higher	<i>N</i> Took Exam	<i>N</i> 3 or Higher	% 3 or Higher	<i>N</i> Took Exam	<i>N</i> 3 or Higher	% 3 or Higher	<i>N</i> Took Exam	<i>N</i> 3 or Higher	% 3 or Higher	<i>N</i> Took Exam	<i>N</i> 3 or Higher	% 3 or Higher
AP Biology (Double Period)	2002	540	411	76.1	55	25	45.5	212	164	77.4	30	16	53.3	242	206	85.1
	2003	522	377	72.2	60	22	36.7	213	153	71.8	14	9	64.3	233	192	82.4
	2004	748	606	81.0	57	39	68.4	302	232	76.8	28	17	60.7	360	317	88.1
	2005	814	670	82.3	84	54	64.3	372	316	84.9	32	24	75.0	326	276	84.7
	2006	896	720	80.4	81	44	54.3	373	312	83.6	56	29	51.8	384	333	86.7
AP Chemistry (Double Period)	2002	391	313	80.1	11	6	54.5	133	101	75.9	13	9	69.2	234	197	84.2
	2003	471	352	74.7	21	11	52.4	214	156	72.9	12	7	58.3	223	177	79.4
	2004	419	343	81.9	21	11	52.4	172	139	80.8	12	11	91.7	214	182	85.0
	2005	544	453	83.3	32	20	62.5	238	193	81.1	24	19	79.2	248	219	88.3
	2006	621	504	81.2	34	14	41.2	275	223	81.1	31	24	77.4	280	242	86.4
AP Physics	2002	84	68	81.0	n/r	n/r	n/r	20	13	65.0	n/r	n/r	n/r	61	52	85.2
	2003	91	61	67.0	n/r	n/r	n/r	30	15	50.0	n/r	n/r	n/r	57	45	78.9
	2004	106	81	76.4	5	1	20.0	37	25	67.6	5	4	80.0	59	51	86.4
	2005	111	78	70.3	7	2	28.6	29	23	79.3	5	2	40.0	70	51	72.9
	2006	92	76	82.6	n/r	n/r	n/r	24	19	79.2	n/r	n/r	n/r	63	53	84.1
AP Environmental Science	2002	217	154	71.0	9	4	44.4	43	33	76.7	13	10	76.9	151	106	70.2
	2003	356	214	60.1	22	7	31.8	52	32	61.5	21	8	38.1	260	167	64.2
	2004	439	252	57.4	17	5	29.4	87	47	54.0	32	9	28.1	302	190	62.9
	2005	564	394	69.9	33	11	33.3	105	75	71.4	25	8	32.0	400	299	74.8
	2006	709	474	66.9	38	12	31.6	104	63	60.6	41	19	46.3	526	380	72.2

Note: AP course enrollment data were drawn from report cards issued in June of each year. AP exam results are drawn from MCPS official records as of October 2006. AP exam results are not reported (n/r) for groups with fewer than five exam takers. American Indian students are included with all students but are not reported separately.

Table B1
Number of MCPS AP English Language and Composition Enrollees and AP Exam Takers in 2006 and Percentage of 2006 AP Exam Scores of 3 or Higher by School and Race/Ethnicity

High School	All Students			African American			Asian American			Hispanic			White		
	N Enroll AP Course	N Took AP Exam	% Scores 3 or Higher	N Enroll AP Course	N Took AP Exam	% Scores 3 or Higher	N Enroll AP Course	N Took AP Exam	% Scores 3 or Higher	N Enroll AP Course	N Took AP Exam	% Scores 3 or Higher	N Enroll AP Course	N Took AP Exam	% Scores 3 or Higher
B-CC	110	96	60.4	18	13	15.4	5	n/r	n/r	6	6	50.0	81	73	67.1
Blair	192	180	95.0	14	13	92.3	49	46	97.8	5	5	80.0	124	116	94.8
Blake	85	81	67.9	21	19	36.8	9	9	55.6	n/r	n/r	n/r	53	51	80.4
Churchill	101	98	86.7	n/r	n/r	n/r	26	24	95.8	n/r	n/r	n/r	72	71	83.1
Damascus	51	49	79.6	n/r	n/r	n/r	8	8	75.0	n/r	n/r	n/r	39	38	81.6
Einstein	67	58	31.0	8	7	14.3	13	12	8.3	18	14	21.4	28	25	52.0
Gaithersburg	89	80	51.3	18	17	47.1	15	13	38.5	9	8	50.0	46	42	57.1
Kennedy	68	66	33.3	24	22	27.3	13	13	15.4	8	8	62.5	23	23	39.1
Magruder	104	98	73.5	10	10	70.0	27	25	60.0	6	6	66.7	60	56	82.1
Northwest	87	79	64.6	14	13	30.8	21	19	78.9	n/r	n/r	n/r	49	46	67.4
Northwood	0														
Paint Branch	101	84	47.6	33	26	38.5	33	27	51.9	6	n/r	n/r	29	27	51.9
Poolesville	47	45	88.9	0	0	0.0	n/r	n/r	n/r	n/r	n/r	n/r	41	39	89.7
Quince Orchard	72	70	61.4	6	6	50.0	14	13	61.5	n/r	n/r	n/r	49	48	62.5
R. Montgomery	82	78	70.5	7	5	40.0	25	25	76.0	6	6	16.7	44	42	78.6
Rockville	79	76	63.2	n/r	0	0.0	18	18	66.7	n/r	n/r	n/r	57	56	62.5
Seneca Valley	100	91	47.3	12	9	44.4	21	20	50.0	7	5	20.0	60	57	49.1
Sherwood	86	79	89.9	6	n/r	n/r	17	14	78.6	6	6	83.3	57	55	94.5
Springbrook	97	93	32.3	24	22	22.7	26	24	8.3	n/r	n/r	n/r	42	42	50.0
W. Johnson	73	71	90.1	n/r	n/r	n/r	11	11	100.0	5	5	80.0	55	53	90.6
Watkins Mill	105	102	32.4	16	15	40.0	12	11	9.1	13	13	15.4	64	63	38.1
Wheaton	63	52	15.4	22	19	15.8	10	8	12.5	19	16	12.5	12	9	22.2
Whitman	172	168	94.0	n/r	n/r	n/r	26	26	92.3	5	5	100.0	138	134	94.0
Wootton	327	311	68.2	5	n/r	n/r	129	121	76.9	7	7	28.6	186	180	63.9

Note: AP enrollment is not reported for groups with fewer than five students. AP exam participation and performance are not reported for groups with fewer than five exam takers. American Indian students are included with all students but are not reported separately.

Table B2
Number of MCPS AP English Literature and Composition Enrollees and AP Exam Takers in 2006 and Percentage of 2006 AP Exam Scores of 3 or Higher by School and Race/Ethnicity

High School	All Students			African American			Asian American			Hispanic			White		
	N Enroll AP Course	N Took AP Exam	% Scores 3 or Higher	N Enroll AP Course	N Took AP Exam	% Scores 3 or Higher	N Enroll AP Course	N Took AP Exam	% Scores 3 or Higher	N Enroll AP Course	N Took AP Exam	% Scores 3 or Higher	N Enroll AP Course	N Took AP Exam	% Scores 3 or Higher
B-CC	129	85	74.1	10	n/r	n/r	9	6	66.7	6	5	40.0	104	72	79.2
Blair	25	23	100.0	n/r	n/r	n/r	6	6	100.0	n/r	n/r	n/r	16	15	100.0
Blake	117	111	78.4	16	14	57.1	12	12	83.3	5	5	100.0	84	80	80.0
Churchill	90	88	97.7	0	0	0.0	22	22	100.0	n/r	n/r	n/r	67	65	96.9
Damascus	71	57	84.2	n/r	n/r	n/r	18	15	86.7	n/r	n/r	n/r	50	39	87.2
Einstein	47	40	45.0	15	12	25.0	8	8	12.5	n/r	n/r	n/r	22	18	77.8
Gaithersburg	96	72	62.5	17	13	61.5	13	13	61.5	10	n/r	n/r	56	42	66.7
Kennedy	76	59	61.0	17	12	50.0	20	14	57.1	11	8	25.0	28	25	80.0
Magruder	71	68	76.5	n/r	n/r	n/r	9	9	77.8	8	8	75.0	50	47	80.9
Northwest	125	113	76.1	23	19	52.6	32	29	82.8	6	6	33.3	64	59	84.7
Northwood	0														
Paint Branch	15	12	83.3	n/r	n/r	n/r	n/r	n/r	n/r	0	0	0.0	10	7	85.7
Poolesville	35	29	93.1	n/r	n/r	n/r	n/r	n/r	n/r	n/r	n/r	n/r	30	25	100.0
Quince Orchard	74	54	90.7	n/r	n/r	n/r	29	17	88.2	n/r	n/r	n/r	40	32	90.6
R. Montgomery	106	91	68.1	9	5	60.0	28	25	56.0	8	7	57.1	61	54	75.9
Rockville	84	78	56.4	9	7	28.6	17	17	52.9	11	10	30.0	47	44	68.2
Seneca Valley	120	74	71.6	25	13	53.8	24	16	81.3	11	7	57.1	60	38	76.3
Sherwood	129	99	84.8	13	9	44.4	12	11	90.9	10	6	83.3	94	73	89.0
Springbrook	121	113	43.4	37	32	28.1	37	35	34.3	10	9	66.7	37	37	59.5
W. Johnson	88	75	94.7	5	n/r	n/r	18	16	87.5	n/r	n/r	n/r	61	51	98.0
Watkins Mill	91	80	40.0	18	14	0.0	20	16	50.0	12	11	27.3	40	38	52.6
Wheaton	58	45	44.4	9	7	42.9	13	12	41.7	20	13	46.2	16	13	46.2
Whitman	186	176	87.5	0	0	0.0	28	25	76.0	5	5	100.0	153	146	89.0
Wootton	239	213	80.8	6	n/r	n/r	88	77	79.2	n/r	n/r	n/r	141	128	83.6

Note: AP enrollment is not reported for groups with fewer than five students. AP exam participation and performance are not reported for groups with fewer than five exam takers. American Indian students are included with all students but are not reported separately.

Table B3
 Number of MCPS **AP Spanish Language** Enrollees and AP Exam Takers in 2006 and
 Percentage of 2006 AP Exam Scores of 3 or Higher by School and Race/Ethnicity

High School	All Students			African American			Asian American			Hispanic			White		
	N Enroll AP Course	N Took AP Exam	% Scores 3 or Higher	N Enroll AP Course	N Took AP Exam	% Scores 3 or Higher	N Enroll AP Course	N Took AP Exam	% Scores 3 or Higher	N Enroll AP Course	N Took AP Exam	% Scores 3 or Higher	N Enroll AP Course	N Took AP Exam	% Scores 3 or Higher
B-CC	42	30	90.0	n/r	0	0.0	0	0	0.0	7	5	100.0	32	25	88.0
Blair	82	51	100.0	n/r	0	0.0	n/r	n/r	n/r	68	41	100.0	10	8	100.0
Blake	48	0	n/r	6	0	0.0	5	0	n/r	19	0	n/r	18	0	0.0
Churchill	123	85	94.1	n/r	n/r	n/r	29	18	94.4	23	17	100.0	68	47	91.5
Damascus	14	12	83.3	0	0	0.0	n/r	n/r	n/r	5	5	100.0	6	n/r	n/r
Einstein	64	42	92.9	0	0	0.0	0	0	0.0	64	42	92.9	0	0	0.0
Gaithersburg	32	18	33.3	6	6	0.0	n/r	n/r	n/r	12	n/r	n/r	10	7	28.6
Kennedy	0														
Magruder	28	28	92.9	n/r	n/r	n/r	6	6	83.3	11	11	100.0	9	9	88.9
Northwest	0														
Northwood	0														
Paint Branch	17	16	87.5	n/r	n/r	n/r	6	6	100.0	5	n/r	n/r	n/r	n/r	n/r
Poolesville	14	13	92.3	n/r	n/r	n/r	n/r	n/r	n/r	n/r	n/r	n/r	8	7	85.7
Quince Orchard	0														
R. Montgomery	20	18	72.2	n/r	n/r	n/r	n/r	n/r	n/r	n/r	n/r	n/r	13	12	75.0
Rockville	17	12	83.3	n/r	n/r	n/r	0	0	n/r	12	8	100.0	n/r	n/r	n/r
Seneca Valley	17	10	60.0	5	n/r	n/r	0	0	n/r	7	n/r	n/r	5	n/r	n/r
Sherwood	28	13	84.6	n/r	0	n/r	n/r	n/r	n/r	11	6	83.3	13	6	83.3
Springbrook	27	26	88.5	7	6	50.0	0	0	n/r	19	19	100.0	n/r	n/r	n/r
W. Johnson	53	50	92.0	n/r	n/r	n/r	n/r	n/r	n/r	26	23	95.7	21	21	90.5
Watkins Mill	0														
Wheaton	62	55	90.9	0	0	0.0	0	0	0.0	60	53	90.6	n/r	n/r	n/r
Whitman	76	63	66.7	0	0	0.0	5	n/r	0.0	17	13	100.0	54	46	58.7
Wootton	26	26	96.2	0	0	0.0	8	8	0.0	n/r	n/r	n/r	15	15	93.3

Note: AP enrollment is not reported for groups with fewer than five students. AP exam participation and performance are not reported for groups with fewer than five exam takers. American Indian students are included with all students but are not reported separately.

Table B4
 Number of MCPS **AP Psychology** Enrollees and AP Exam Takers in 2006 and
 Percentage of 2006 AP Exam Scores of 3 or Higher by School and Race/Ethnicity

High School	All Students			African American			Asian American			Hispanic			White		
	N Enroll AP Course	N Took AP Exam	% Scores 3 or Higher	N Enroll AP Course	N Took AP Exam	% Scores 3 or Higher	N Enroll AP Course	N Took AP Exam	% Scores 3 or Higher	N Enroll AP Course	N Took AP Exam	% Scores 3 or Higher	N Enroll AP Course	N Took AP Exam	% Scores 3 or Higher
B-CC	117	98	82.7	9	5	100.0	8	6	33.3	8	7	42.9	92	80	88.8
Blair	161	119	93.3	27	16	93.8	33	24	95.8	15	7	71.4	86	72	94.4
Blake	140	121	94.2	14	11	90.9	17	15	93.3	9	6	100.0	100	89	94.4
Churchill	255	244	90.6	5	n/r	n/r	67	66	86.4	9	9	88.9	174	165	93.3
Damascus	93	68	83.8	7	n/r	n/r	17	14	92.9	n/r	n/r	n/r	65	50	82.0
Einstein	48	32	56.3	9	6	50.0	12	8	25.0	9	6	50.0	18	12	83.3
Gaithersburg	117	91	37.4	17	10	20.0	17	15	60.0	21	16	6.3	61	50	44.0
Kennedy	49	35	60.0	15	11	63.6	5	n/r	n/r	8	n/r	n/r	21	17	64.7
Magruder	210	168	83.9	17	10	80.0	65	55	74.5	21	15	86.7	107	88	89.8
Northwest	85	59	93.2	15	9	88.9	26	19	89.5	5	n/r	n/r	39	28	96.4
Northwood	0														
Paint Branch	155	128	67.2	47	35	60.0	47	39	71.8	11	9	66.7	50	45	68.9
Poolesville	100	82	65.9	n/r	0	0.0	6	5	60.0	0	0	0.0	93	77	66.2
Quince Orchard	152	116	81.9	9	n/r	n/r	32	26	73.1	8	7	71.4	103	79	86.1
R. Montgomery	168	145	62.1	9	n/r	n/r	29	27	74.1	13	10	50.0	117	104	61.5
Rockville	81	58	34.5	8	n/r	n/r	15	14	42.9	10	8	0.0	48	32	43.8
Seneca Valley	55	42	85.7	8	n/r	n/r	13	12	91.7	7	5	100.0	27	21	81.0
Sherwood	101	93	86.0	9	9	55.6	13	12	91.7	n/r	n/r	n/r	76	69	88.4
Springbrook	124	98	39.8	49	34	23.5	24	24	29.2	19	13	46.2	32	27	66.7
W. Johnson	168	156	93.6	5	n/r	n/r	30	27	96.3	9	7	100.0	124	118	92.4
Watkins Mill	164	136	48.5	46	37	24.3	25	21	52.4	25	21	23.8	68	57	71.9
Wheaton	47	32	21.9	7	n/r	n/r	7	5	60.0	19	11	9.1	14	12	16.7
Whitman	193	161	88.2	7	n/r	n/r	23	22	95.5	8	8	87.5	155	127	87.4
Wootton	304	258	69.0	12	7	42.9	111	93	75.3	8	6	83.3	173	152	65.8

Note: AP enrollment is not reported for groups with fewer than five students. AP exam participation and performance are not reported for groups with fewer than five exam takers. American Indian students are included with all students but are not reported separately.

Table B5
 Number of MCPS **AP U.S. History** Enrollees and AP Exam Takers in 2006 and
 Percentage of 2006 AP Exam Scores of 3 or Higher by School and Race/Ethnicity

High School	All Students			African American			Asian American			Hispanic			White		
	N Enroll AP Course	N Took AP Exam	% Scores 3 or Higher	N Enroll AP Course	N Took AP Exam	% Scores 3 or Higher	N Enroll AP Course	N Took AP Exam	% Scores 3 or Higher	N Enroll AP Course	N Took AP Exam	% Scores 3 or Higher	N Enroll AP Course	N Took AP Exam	% Scores 3 or Higher
B-CC	24	17	64.7	n/r	0	0.0	n/r	n/r	n/r	0	0	0.0	21	15	66.7
Blair	63	59	98.3	n/r	n/r	n/r	11	11	100.0	n/r	n/r	n/r	45	42	100.0
Blake	19	16	75.0	n/r	n/r	n/r	0	0	n/r	0	0	n/r	17	15	73.3
Churchill	126	125	88.8	n/r	n/r	n/r	25	25	88.0	n/r	n/r	n/r	98	97	90.7
Damascus	38	32	71.9	0	0	0.0	n/r	n/r	n/r	n/r	n/r	n/r	34	29	75.9
Einstein	36	31	74.2	n/r	n/r	n/r	7	7	85.7	n/r	n/r	n/r	21	19	73.7
Gaithersburg	15	14	42.9	n/r	n/r	n/r	n/r	n/r	n/r	0	0	0.0	10	9	44.4
Kennedy	19	11	45.5	10	6	33.3	0	0	n/r	n/r	n/r	n/r	7	n/r	n/r
Magruder	28	27	70.4	n/r	n/r	n/r	5	5	60.0	5	5	40.0	17	16	81.3
Northwest	14	8	75.0	n/r	0	0.0	n/r	n/r	n/r	n/r	0	0.0	9	6	83.3
Northwood	12	0	0.0	n/r	0	0.0	0	0	0.0	n/r	0	0.0	7	0	0.0
Paint Branch	32	25	64.0	7	5	80.0	10	5	60.0	0	0	0.0	15	15	60.0
Poolesville	37	23	60.9	n/r	0	0.0	n/r	n/r	n/r	n/r	n/r	n/r	31	18	61.1
Quince Orchard	51	43	81.4	n/r	n/r	n/r	6	5	100.0	0	0	0.0	42	36	80.6
R. Montgomery	166	152	90.8	n/r	n/r	n/r	61	56	89.3	8	5	80.0	93	87	93.1
Rockville	11	10	50.0	0	0	0.0	n/r	n/r	n/r	n/r	n/r	n/r	5	5	80.0
Seneca Valley	44	33	39.4	8	6	33.3	11	8	50.0	n/r	n/r	n/r	24	18	33.3
Sherwood	24	8	100.0	n/r	n/r	n/r	n/r	n/r	n/r	n/r	0	n/r	17	5	100.0
Springbrook	42	39	76.9	10	8	75.0	10	9	55.6	n/r	n/r	n/r	18	18	83.3
W. Johnson	78	74	87.8	n/r	n/r	n/r	10	10	100.0	n/r	n/r	n/r	62	59	93.2
Watkins Mill	31	28	82.1	n/r	n/r	n/r	n/r	n/r	n/r	n/r	n/r	n/r	21	19	89.5
Wheaton	41	25	48.0	6	n/r	n/r	10	7	42.9	16	8	62.5	9	6	50.0
Whitman	56	55	90.9	n/r	n/r	n/r	5	5	80.0	n/r	n/r	n/r	48	47	93.6
Wootton	27	25	96.0	n/r	n/r	n/r	17	15	100.0	n/r	n/r	n/r	7	7	100.0

Note: AP enrollment is not reported for groups with fewer than five students. AP exam participation and performance are not reported for groups with fewer than five exam takers. American Indian students are included with all students but are not reported separately.

Table B6
Number of MCPS AP U.S. Government and Politics Enrollees and AP Exam Takers in 2006 and Percentage of 2006 AP Exam Scores of 3 or Higher by School and Race/Ethnicity

High School	All Students			African American			Asian American			Hispanic			White		
	N Enroll AP Course	N Took AP Exam	% Scores 3 or Higher	N Enroll AP Course	N Took AP Exam	% Scores 3 or Higher	N Enroll AP Course	N Took AP Exam	% Scores 3 or Higher	N Enroll AP Course	N Took AP Exam	% Scores 3 or Higher	N Enroll AP Course	N Took AP Exam	% Scores 3 or Higher
B-CC	204	187	80.2	5	n/r	n/r	14	12	100.0	14	12	66.7	171	160	79.4
Blair	127	118	91.5	9	9	88.9	63	60	93.3	n/r	n/r	n/r	51	45	91.1
Blake	53	53	79.2	5	5	100.0	9	9	55.6	n/r	n/r	n/r	35	35	85.7
Churchill	118	117	97.4	n/r	n/r	n/r	28	27	100.0	5	5	100.0	84	84	96.4
Damascus	52	49	89.8	n/r	n/r	n/r	12	12	91.7	n/r	n/r	n/r	35	32	87.5
Einstein	69	65	52.3	6	5	40.0	8	7	57.1	13	11	54.5	42	42	52.4
Gaithersburg	102	77	75.3	11	6	33.3	23	16	75.0	10	6	66.7	58	49	81.6
Kennedy	75	71	28.2	18	15	20.0	10	10	30.0	9	9	11.1	38	37	35.1
Magruder	110	103	71.8	10	10	80.0	33	32	68.8	5	5	60.0	62	56	73.2
Northwest	29	27	63.0	n/r	n/r	n/r	12	11	63.6	n/r	n/r	n/r	13	13	61.5
Northwood	22	0	0.0	n/r	0	0.0	0	0	0.0	n/r	0	0.0	16	0	0.0
Paint Branch	113	102	58.8	31	28	50.0	36	32	53.1	n/r	n/r	n/r	42	38	68.4
Poolesville	0														
Quince Orchard	46	44	100.0	n/r	n/r	n/r	10	9	100.0	0	0	0.0	34	34	100.0
R. Montgomery	63	57	68.4	6	6	66.7	15	13	69.2	6	6	66.7	35	31	71.0
Rockville	39	36	47.2	6	n/r	n/r	9	9	55.6	n/r	n/r	n/r	21	20	55.0
Seneca Valley	20	12	25.0	5	n/r	n/r	5	5	60.0	n/r	0	0.0	8	5	0.0
Sherwood	146	137	67.9	9	9	44.4	22	22	68.2	n/r	n/r	n/r	110	102	70.6
Springbrook	127	126	47.6	35	35	42.9	45	45	40.0	8	7	85.7	38	38	55.3
W. Johnson	200	192	80.2	n/r	n/r	n/r	37	37	75.7	10	9	100.0	149	143	79.7
Watkins Mill	101	89	34.8	18	15	13.3	19	16	37.5	17	14	28.6	47	44	43.2
Wheaton	75	58	32.8	22	17	35.3	15	11	45.5	23	16	18.8	14	13	38.5
Whitman	251	234	85.5	n/r	n/r	n/r	31	29	86.2	7	6	66.7	212	198	85.9
Wootton	194	187	82.9	5	5	80.0	86	86	82.6	n/r	n/r	n/r	98	92	84.8

Note: AP enrollment is not reported for groups with fewer than five students. AP exam participation and performance are not reported for groups with fewer than five exam takers. American Indian students are included with all students but are not reported separately.

Table B7
 Number of MCPS **AP World History** Enrollees and AP Exam Takers in 2006 and
 Percentage of 2006 AP Exam Scores of 3 or Higher by School and Race/Ethnicity

High School	All Students			African American			Asian American			Hispanic			White		
	N Enroll AP Course	N Took AP Exam	% Scores 3 or Higher	N Enroll AP Course	N Took AP Exam	% Scores 3 or Higher	N Enroll AP Course	N Took AP Exam	% Scores 3 or Higher	N Enroll AP Course	N Took AP Exam	% Scores 3 or Higher	N Enroll AP Course	N Took AP Exam	% Scores 3 or Higher
B-CC	109	80	88.8	19	7	42.9	n/r	n/r	n/r	9	n/r	n/r	76	66	93.9
Blair	244	209	90.9	28	25	72.0	56	50	96.0	8	6	66.7	151	127	93.7
Blake	63	59	83.1	12	11	45.5	12	12	75.0	n/r	n/r	n/r	37	34	97.1
Churchill	73	70	88.6	n/r	n/r	n/r	23	22	86.4	n/r	n/r	n/r	46	44	88.6
Damascus	101	94	90.4	n/r	n/r	n/r	15	15	93.3	n/r	n/r	n/r	79	73	89.0
Einstein	49	46	30.4	7	7	14.3	8	7	28.6	16	15	20.0	18	17	47.1
Gaithersburg	122	109	52.3	22	19	36.8	21	21	85.7	16	11	54.5	63	58	44.8
Kennedy	98	77	48.1	40	27	44.4	15	12	41.7	13	11	45.5	30	27	55.6
Magruder	58	58	81.0	n/r	n/r	n/r	14	14	71.4	n/r	n/r	n/r	38	38	84.2
Northwest	24	22	95.5	n/r	n/r	n/r	n/r	n/r	n/r	0	0	0.0	16	14	100.0
Northwood	0														
Paint Branch	112	103	65.0	30	27	44.4	41	38	76.3	7	6	50.0	34	32	71.9
Poolesville	119	84	65.5	0	0	0.0	7	7	85.7	n/r	n/r	n/r	109	74	64.9
Quince Orchard	131	108	64.8	5	n/r	n/r	30	26	69.2	6	5	40.0	89	72	66.7
R. Montgomery	166	152	72.4	11	10	60.0	36	36	86.1	13	9	55.6	106	97	70.1
Rockville	100	94	68.1	n/r	n/r	n/r	23	22	72.7	n/r	n/r	n/r	68	65	72.3
Seneca Valley	64	54	55.6	7	n/r	n/r	13	12	58.3	n/r	n/r	n/r	41	36	58.3
Sherwood	137	117	79.5	9	7	71.4	29	25	80.0	5	5	80.0	94	80	80.0
Springbrook	131	124	48.4	41	37	21.6	32	31	48.4	15	14	50.0	42	41	73.2
W. Johnson	197	187	78.1	8	8	75.0	27	26	88.5	15	14	57.1	147	139	78.4
Watkins Mill	116	111	36.0	20	18	11.1	20	19	26.3	16	16	31.3	60	58	48.3
Wheaton	74	59	49.2	24	19	26.3	13	11	54.5	25	20	60.0	12	9	66.7
Whitman	120	115	94.8	n/r	n/r	n/r	24	23	95.7	6	6	100.0	89	85	94.1
Wootton	203	193	79.3	n/r	n/r	n/r	88	84	88.1	n/r	n/r	n/r	109	104	74.0

Note: AP enrollment is not reported for groups with fewer than five students. AP exam participation and performance are not reported for groups with fewer than five exam takers. American Indian students are included with all students but are not reported separately.

Table B8
Number of MCPS AP European History Enrollees and AP Exam Takers in 2006 and
Percentage of 2006 AP Exam Scores of 3 or Higher by School and Race/Ethnicity

High School	All Students			African American			Asian American			Hispanic			White		
	N Enroll AP Course	N Took AP Exam	% Scores 3 or Higher	N Enroll AP Course	N Took AP Exam	% Scores 3 or Higher	N Enroll AP Course	N Took AP Exam	% Scores 3 or Higher	N Enroll AP Course	N Took AP Exam	% Scores 3 or Higher	N Enroll AP Course	N Took AP Exam	% Scores 3 or Higher
B-CC	10	10	90.0	n/r	n/r	n/r	0	0	0.0	n/r	n/r	n/r	8	8	100.0
Blair	25	16	87.5	n/r	n/r	n/r	n/r	n/r	n/r	0	0	0.0	20	14	92.9
Blake	23	23	100.0	n/r	n/r	n/r	n/r	n/r	n/r	n/r	n/r	n/r	18	18	100.0
Churchill	43	42	90.5	0	0	0.0	5	5	100.0	n/r	n/r	n/r	36	35	88.6
Damascus	62	58	74.1	n/r	n/r	n/r	10	10	90.0	n/r	n/r	n/r	47	44	70.5
Einstein	0														
Gaithersburg	0														
Kennedy	0														
Magruder	34	25	92.0	n/r	n/r	n/r	5	5	100.0	8	5	60.0	17	13	100.0
Northwest	30	28	96.4	n/r	n/r	n/r	n/r	n/r	n/r	n/r	n/r	n/r	23	21	100.0
Northwood	0														
Paint Branch	0														
Poolesville	n/r	0	n/r	0	0	0.0	n/r	0	0.0	0	0	0.0	0	0	n/r
Quince Orchard	20	13	69.2	n/r	n/r	n/r	n/r	n/r	n/r	0	0	0.0	16	11	72.7
R. Montgomery	87	73	80.8	7	5	80.0	11	11	72.7	7	5	80.0	62	52	82.7
Rockville	28	27	29.6	n/r	n/r	n/r	6	6	33.3	5	5	20.0	16	15	33.3
Seneca Valley	0														
Sherwood	26	24	91.7	n/r	n/r	n/r	n/r	n/r	n/r	n/r	n/r	n/r	21	20	100.0
Springbrook	0														
W. Johnson	95	76	88.2	n/r	n/r	n/r	13	11	90.9	6	5	100.0	74	59	86.4
Watkins Mill	9	9	77.8	n/r	n/r	n/r	0	0	0.0	0	0	0.0	7	7	85.7
Wheaton	13	12	58.3	n/r	n/r	n/r	n/r	n/r	n/r	6	5	60.0	n/r	n/r	n/r
Whitman	81	71	85.9	n/r	n/r	n/r	7	7	85.7	n/r	n/r	n/r	68	58	86.2
Wootton	51	47	78.7	0	0	0.0	17	16	62.5	0	0	0.0	34	31	87.1

Note: AP enrollment is not reported for groups with fewer than five students. AP exam participation and performance are not reported for groups with fewer than five exam takers. American Indian students are included with all students but are not reported separately.

Table B9
 Number of MCPS **AP Calculus AB** Enrollees and AP Exam Takers in 2006 and
 Percentage of 2006 AP Exam Scores of 3 or Higher by School and Race/Ethnicity

High School	All Students			African American			Asian American			Hispanic			White		
	N Enroll AP Course	N Took AP Exam	% Scores 3 or Higher	N Enroll AP Course	N Took AP Exam	% Scores 3 or Higher	N Enroll AP Course	N Took AP Exam	% Scores 3 or Higher	N Enroll AP Course	N Took AP Exam	% Scores 3 or Higher	N Enroll AP Course	N Took AP Exam	% Scores 3 or Higher
B-CC	41	37	67.6	n/r	n/r	n/r	n/r	n/r	n/r	n/r	n/r	n/r	34	30	76.7
Blair	67	49	71.4	7	6	66.7	12	7	42.9	6	6	50.0	41	30	83.3
Blake	53	52	76.9	n/r	n/r	n/r	n/r	n/r	n/r	n/r	n/r	n/r	43	42	76.2
Churchill	87	86	100.0	0	0	0.0	26	26	100.0	6	6	100.0	55	54	100.0
Damascus	39	25	80.0	n/r	0	0.0	8	6	66.7	n/r	n/r	n/r	28	18	83.3
Einstein	0														
Gaithersburg	50	34	29.4	6	6	16.7	7	n/r	n/r	6	n/r	n/r	31	21	33.3
Kennedy	20	17	23.5	7	6	0.0	6	6	16.7	n/r	n/r	n/r	n/r	n/r	n/r
Magruder	56	47	31.9	0	0	0.0	14	10	20.0	n/r	n/r	n/r	38	34	38.2
Northwest	35	30	46.7	n/r	n/r	n/r	14	12	33.3	0	0	0.0	19	16	62.5
Northwood	0														
Paint Branch	0														
Poolesville	18	18	100.0	0	0	0.0	n/r	n/r	n/r	n/r	n/r	n/r	16	16	100.0
Quince Orchard	26	17	23.5	n/r	n/r	n/r	8	5	20.0	n/r	n/r	n/r	14	9	33.3
R. Montgomery	85	71	78.9	5	5	20.0	21	18	83.3	8	6	33.3	51	42	90.5
Rockville	43	22	22.7	n/r	0	0.0	15	8	37.5	n/r	n/r	n/r	25	12	16.7
Seneca Valley	30	27	92.6	6	5	100.0	6	6	66.7	n/r	n/r	n/r	14	12	100.0
Sherwood	73	60	81.7	n/r	n/r	n/r	12	8	62.5	5	n/r	n/r	53	46	87.0
Springbrook	21	18	61.1	7	5	60.0	6	5	40.0	n/r	n/r	n/r	5	5	60.0
W. Johnson	64	55	92.7	n/r	n/r	n/r	10	9	88.9	n/r	n/r	n/r	47	42	92.9
Watkins Mill	46	42	42.9	7	6	16.7	9	7	57.1	n/r	n/r	n/r	28	27	48.1
Wheaton	n/r	n/r	n/r	0	0	0.0	n/r	n/r	n/r	n/r	0	0.0	n/r	0	0.0
Whitman	105	92	90.2	0	0	0.0	24	21	85.7	7	5	80.0	74	66	92.4
Wootton	174	153	84.3	5	n/r	n/r	80	71	78.9	n/r	n/r	n/r	86	76	88.2

Note: AP enrollment is not reported for groups with fewer than five students. AP exam participation and performance are not reported for groups with fewer than five exam takers. American Indian students are included with all students but are not reported separately.

Table B10
Number of MCPS AP Calculus BC Enrollees and AP Exam Takers in 2006 and
Percentage of 2006 AP Exam Scores of 3 or Higher by School and Race/Ethnicity

High School	All Students			African American			Asian American			Hispanic			White		
	N Enroll AP Course	N Took AP Exam	% Scores 3 or Higher	N Enroll AP Course	N Took AP Exam	% Scores 3 or Higher	N Enroll AP Course	N Took AP Exam	% Scores 3 or Higher	N Enroll AP Course	N Took AP Exam	% Scores 3 or Higher	N Enroll AP Course	N Took AP Exam	% Scores 3 or Higher
B-CC	75	72	94.4	n/r	n/r	n/r	n/r	n/r	n/r	n/r	n/r	n/r	67	64	93.8
Blair	35	29	65.5	n/r	n/r	n/r	6	6	66.7	0	0	0.0	25	21	66.7
Blake	16	13	92.3	0	0	0.0	n/r	n/r	n/r	n/r	n/r	n/r	13	10	90.0
Churchill	93	90	100.0	0	0	0.0	36	36	100.0	n/r	n/r	n/r	56	53	100.0
Damascus	31	27	85.2	n/r	0	0.0	13	13	76.9	0	0	0.0	17	14	92.9
Einstein	34	31	58.1	n/r	n/r	n/r	7	7	71.4	n/r	n/r	n/r	22	20	55.0
Gaithersburg	48	39	61.5	6	n/r	n/r	14	13	61.5	n/r	n/r	n/r	24	18	61.1
Kennedy	12	6	83.3	n/r	0	0.0	n/r	n/r	n/r	n/r	0	0.0	5	n/r	n/r
Magruder	90	85	89.4	n/r	n/r	n/r	36	34	94.1	8	7	57.1	44	42	92.9
Northwest	33	33	72.7	n/r	n/r	n/r	14	14	64.3	0	0	0.0	17	17	76.5
Northwood															
Paint Branch	56	41	85.4	8	5	100.0	27	19	84.2	n/r	n/r	n/r	19	15	80.0
Poolesville	20	20	100.0	n/r	n/r	n/r	n/r	n/r	n/r	n/r	n/r	n/r	15	15	100.0
Quince Orchard	91	63	33.3	n/r	n/r	n/r	38	29	24.1	n/r	n/r	n/r	50	32	43.8
R. Montgomery	87	81	92.6	n/r	n/r	n/r	49	46	87.0	n/r	n/r	n/r	35	32	100.0
Rockville															
Seneca Valley	26	23	100.0	n/r	n/r	n/r	8	7	100.0	n/r	0	0.0	15	14	100.0
Sherwood	27	23	95.7	n/r	n/r	n/r	7	5	100.0	n/r	n/r	n/r	14	13	100.0
Springbrook	55	51	56.9	7	7	42.9	23	22	45.5	n/r	n/r	n/r	23	20	70.0
W. Johnson	42	42	100.0	n/r	n/r	n/r	12	12	100.0	n/r	n/r	n/r	27	27	100.0
Watkins Mill	27	27	81.5	n/r	n/r	n/r	12	12	75.0	5	5	80.0	8	8	87.5
Wheaton	34	21	23.8	n/r	n/r	n/r	17	13	15.4	11	5	40.0	n/r	n/r	n/r
Whitman	46	45	97.8	0	0	0.0	13	13	100.0	n/r	n/r	n/r	32	31	96.8
Wootton	71	68	94.1	0	0	0.0	51	49	93.9	n/r	0	0.0	19	19	94.7

Note: AP enrollment is not reported for groups with fewer than five students. AP exam participation and performance are not reported for groups with fewer than five exam takers. American Indian students are included with all students but are not reported separately.

Table B11
Number of MCPS **AP Statistics** Enrollees and AP Exam Takers in 2006 and
Percentage of 2006 AP Exam Scores of 3 or Higher by School and Race/Ethnicity

High School	<u>All Students</u>			<u>African American</u>			<u>Asian American</u>			<u>Hispanic</u>			<u>White</u>		
	<i>N</i> Enroll AP Course	<i>N</i> Took AP Exam	% Scores 3 or Higher	<i>N</i> Enroll AP Course	<i>N</i> Took AP Exam	% Scores 3 or Higher	<i>N</i> Enroll AP Course	<i>N</i> Took AP Exam	% Scores 3 or Higher	<i>N</i> Enroll AP Course	<i>N</i> Took AP Exam	% Scores 3 or Higher	<i>N</i> Enroll AP Course	<i>N</i> Took AP Exam	% Scores 3 or Higher
B-CC	89	84	67.9	n/r	n/r	n/r	n/r	n/r	n/r	5	5	20.0	76	72	69.4
Blair	55	40	75.0	7	5	40.0	5	n/r	n/r	7	7	28.6	36	25	92.0
Blake	43	22	86.4	n/r	0	0.0	10	6	100.0	n/r	n/r	n/r	26	15	80.0
Churchill	82	80	90.0	n/r	n/r	n/r	33	31	83.9	n/r	n/r	n/r	46	46	93.5
Damascus	15	13	84.6	0	0	0.0	n/r	n/r	n/r	n/r	n/r	n/r	9	8	87.5
Einstein	72	65	30.8	10	9	22.2	19	18	11.1	10	10	10.0	33	28	53.6
Gaithersburg	52	34	61.8	n/r	n/r	n/r	n/r	n/r	n/r	n/r	n/r	n/r	42	26	65.4
Kennedy	24	15	33.3	7	0	0.0	n/r	n/r	n/r	n/r	n/r	n/r	9	9	44.4
Magruder	91	73	69.9	7	n/r	n/r	26	25	64.0	5	n/r	n/r	53	42	71.4
Northwest	64	45	64.4	5	5	0.0	19	14	57.1	n/r	0	0.0	37	26	80.8
Northwood	0														
Paint Branch	58	48	75.0	11	9	66.7	19	16	87.5	n/r	n/r	n/r	27	22	68.2
Poolesville	0														
Quince Orchard	89	56	76.8	n/r	n/r	n/r	23	17	76.5	n/r	0	0.0	61	38	78.9
R. Montgomery	96	73	80.8	n/r	n/r	n/r	36	29	82.8	9	6	66.7	47	36	80.6
Rockville	54	51	37.3	n/r	n/r	n/r	14	13	30.8	6	5	20.0	31	30	46.7
Seneca Valley	0														
Sherwood	20	10	90.0	n/r	0	0.0	n/r	n/r	n/r	n/r	0	0.0	14	8	100.0
Springbrook	41	36	38.9	10	8	75.0	15	13	15.4	n/r	n/r	n/r	14	14	42.9
W. Johnson	71	51	88.2	n/r	n/r	n/r	12	8	100.0	6	5	80.0	50	36	86.1
Watkins Mill	0														
Wheaton	48	34	29.4	n/r	n/r	n/r	15	11	54.5	18	9	11.1	11	10	20.0
Whitman	83	45	73.3	0	0	0.0	15	9	77.8	n/r	n/r	n/r	65	34	70.6
Wootton	93	89	87.6	n/r	n/r	n/r	53	53	86.8	n/r	n/r	n/r	38	34	91.2

Note: AP enrollment is not reported for groups with fewer than five students. AP exam participation and performance are not reported for groups with fewer than five exam takers. American Indian students are included with all students but are not reported separately.

Table B12
Number of MCPS AP Biology Enrollees and AP Exam Takers in 2006 and
Percentage of 2006 AP Exam Scores of 3 or Higher by School and Race/Ethnicity

High School	All Students			African American			Asian American			Hispanic			White		
	N Enroll AP Course	N Took AP Exam	% Scores 3 or Higher	N Enroll AP Course	N Took AP Exam	% Scores 3 or Higher	N Enroll AP Course	N Took AP Exam	% Scores 3 or Higher	N Enroll AP Course	N Took AP Exam	% Scores 3 or Higher	N Enroll AP Course	N Took AP Exam	% Scores 3 or Higher
B-CC	16	11	90.9	n/r	n/r	n/r	5	n/r	n/r	n/r	n/r	n/r	9	8	100.0
Blair	77	69	95.7	8	7	85.7	31	27	100.0	5	5	80.0	33	30	96.7
Blake	n/r	n/r	n/r	0	0	n/r	0	0	0.0	n/r	n/r	n/r	0	0	0.0
Churchill	78	77	96.1	n/r	n/r	n/r	47	46	95.7	n/r	n/r	n/r	26	26	100.0
Damascus	27	25	64.0	n/r	n/r	n/r	9	9	88.9	0	0	0.0	15	13	53.8
Einstein	5	5	60.0	n/r	n/r	n/r	n/r	n/r	n/r	0	0	0.0	n/r	n/r	n/r
Gaithersburg	31	30	60.0	n/r	n/r	n/r	7	7	57.1	n/r	n/r	n/r	17	16	68.8
Kennedy	53	46	47.8	8	7	28.6	19	17	52.9	9	6	0.0	17	16	68.8
Magruder	21	19	78.9	n/r	n/r	n/r	12	11	81.8	n/r	n/r	n/r	n/r	n/r	n/r
Northwest	25	23	69.6	0	0	n/r	14	12	83.3	n/r	n/r	n/r	9	9	66.7
Northwood	0														
Paint Branch	79	74	75.7	18	17	64.7	38	35	77.1	n/r	n/r	n/r	20	19	84.2
Poolesville	20	17	94.1	n/r	0	n/r	n/r	n/r	n/r	n/r	n/r	n/r	14	12	91.7
Quince Orchard	75	61	78.7	n/r	n/r	n/r	37	30	76.7	n/r	n/r	n/r	36	29	82.8
R. Montgomery	24	18	83.3	n/r	n/r	n/r	11	7	85.7	n/r	n/r	n/r	10	8	100.0
Rockville	29	28	39.3	n/r	n/r	n/r	8	7	28.6	9	9	22.2	11	11	63.6
Seneca Valley	37	30	73.3	6	n/r	n/r	14	14	71.4	0	0	0.0	17	13	92.3
Sherwood	91	86	68.6	13	13	69.2	22	21	61.9	n/r	n/r	n/r	54	50	72.0
Springbrook	17	17	52.9	6	6	66.7	6	6	16.7	n/r	n/r	n/r	n/r	n/r	n/r
W. Johnson	55	50	96.0	0	0	0.0	14	12	91.7	5	n/r	n/r	36	34	97.1
Watkins Mill	25	25	88.0	5	5	80.0	n/r	n/r	n/r	0	0	0.0	15	15	93.3
Wheaton	12	10	30.0	n/r	n/r	n/r	n/r	n/r	n/r	6	6	16.7	0	0	0.0
Whitman	34	32	100.0	0	0	0.0	14	14	100.0	0	0	0.0	20	18	100.0
Wootton	146	142	97.9	n/r	n/r	n/r	90	87	96.6	5	n/r	n/r	49	49	100.0

Note: AP enrollment is not reported for groups with fewer than five students. AP exam participation and performance are not reported for groups with fewer than five exam takers. American Indian students are included with all students but are not reported separately.

Table B13
Number of MCPS AP Chemistry Enrollees and AP Exam Takers in 2006 and
Percentage of 2006 AP Exam Scores of 3 or Higher by School and Race/Ethnicity

High School	All Students			African American			Asian American			Hispanic			White		
	N Enroll AP Course	N Took AP Exam	% Scores 3 or Higher	N Enroll AP Course	N Took AP Exam	% Scores 3 or Higher	N Enroll AP Course	N Took AP Exam	% Scores 3 or Higher	N Enroll AP Course	N Took AP Exam	% Scores 3 or Higher	N Enroll AP Course	N Took AP Exam	% Scores 3 or Higher
B-CC	0														
Blair	45	41	92.7	n/r	n/r	n/r	23	22	86.4	n/r	n/r	n/r	17	17	100.0
Blake	24	24	37.5	n/r	n/r	n/r	6	6	33.3	n/r	n/r	n/r	14	14	50.0
Churchill	63	62	93.5	0	0	0.0	32	32	87.5	n/r	n/r	n/r	28	28	100.0
Damascus	50	49	100.0	n/r	n/r	n/r	16	15	100.0	n/r	n/r	n/r	29	29	100.0
Einstein	14	12	25.0	n/r	n/r	n/r	n/r	n/r	n/r	n/r	n/r	n/r	n/r	n/r	n/r
Gaithersburg	32	23	69.6	5	n/r	n/r	6	5	80.0	6	n/r	n/r	15	11	54.5
Kennedy	26	25	24.0	10	9	11.1	9	9	33.3	n/r	n/r	n/r	5	5	20.0
Magruder	27	26	69.2	0	0	0.0	19	19	63.2	n/r	n/r	n/r	7	6	83.3
Northwest	21	20	100.0	n/r	n/r	n/r	8	8	100.0	0	0	0.0	12	11	100.0
Northwood	0														
Paint Branch	30	26	69.2	6	5	40.0	16	14	71.4	n/r	n/r	n/r	6	6	83.3
Poolesville	0														
Quince Orchard	0														
R. Montgomery	34	30	90.0	n/r	n/r	n/r	15	13	92.3	n/r	n/r	n/r	14	13	92.3
Rockville	19	15	86.7	0	0	0.0	8	5	80.0	n/r	0	0.0	10	10	90.0
Seneca Valley	21	17	17.6	n/r	n/r	n/r	11	9	22.2	n/r	0	0.0	7	7	14.3
Sherwood	49	43	62.8	n/r	n/r	n/r	16	13	46.2	n/r	0	0.0	31	29	69.0
Springbrook	0														
W. Johnson	38	37	97.3	n/r	n/r	n/r	14	13	92.3	n/r	n/r	n/r	21	21	100.0
Watkins Mill	15	15	73.3	n/r	n/r	n/r	5	5	80.0	n/r	n/r	n/r	7	7	85.7
Wheaton	13	13	84.6	n/r	n/r	n/r	7	7	100.0	n/r	n/r	n/r	n/r	n/r	n/r
Whitman	71	68	98.5	0	0	0.0	23	22	95.5	5	5	100.0	43	41	100.0
Wootton	82	75	98.7	0	0	0.0	58	54	98.1	0	0	0.0	24	21	100.0

Note: AP enrollment is not reported for groups with fewer than five students. AP exam participation and performance are not reported for groups with fewer than five exam takers. American Indian students are included with all students but are not reported separately.

Table B14
 Number of MCPS AP Physics Enrollees and AP Exam Takers in 2006 and
 Percentage of 2006 AP Exam Scores of 3 or Higher by School and Race/Ethnicity

High School	All Students			African American			Asian American			Hispanic			White		
	N Enroll AP Course	N Took AP Exam	% Scores 3 or Higher	N Enroll AP Course	N Took AP Exam	% Scores 3 or Higher	N Enroll AP Course	N Took AP Exam	% Scores 3 or Higher	N Enroll AP Course	N Took AP Exam	% Scores 3 or Higher	N Enroll AP Course	N Took AP Exam	% Scores 3 or Higher
B-CC	19	0	n/r	0	0	0.0	n/r	0	0.0	n/r	0	0.0	16	0	0.0
Blair	28	22	90.9	n/r	n/r	n/r	8	6	100.0	n/r	n/r	n/r	17	14	92.9
Blake	9	0	n/r	n/r	0	0.0	0	0	0.0	n/r	0	0.0	7	0	0.0
Churchill	39	0	n/r	0	0	0.0	17	0	0.0	n/r	0	0.0	21	0	0.0
Damascus	0														
Einstein	22	0	n/r	n/r	0	0.0	6	0	0.0	7	0	0.0	6	0	0.0
Gaithersburg	22	15	73.3	0	0	0.0	6	5	80.0	n/r	n/r	n/r	15	9	66.7
Kennedy	9	0	n/r	0	0	0.0	n/r	0	0.0	n/r	0	0.0	n/r	0	0.0
Magruder	42	0	n/r	n/r	0	0.0	13	0	0.0	n/r	0	0.0	25	0	0.0
Northwest	21	0	n/r	n/r	0	0.0	14	0	0.0	n/r	0	0.0	n/r	0	0.0
Northwood	0														
Paint Branch	0														
Poolesville	16	14	85.7	0	0	0.0	0	0	0.0	n/r	n/r	n/r	15	13	84.6
Quince Orchard	19	0	n/r	0	0	0.0	8	0	0.0	0	0	0.0	11	0	0.0
R. Montgomery	11	0	n/r	0	0	0.0	6	0	0.0	0	0	0.0	5	0	0.0
Rockville	15	15	73.3	0	0	0.0	6	6	50.0	0	0	0.0	9	9	88.9
Seneca Valley	0														
Sherwood	48	0	n/r	n/r	0	0.0	6	0	0.0	n/r	0	0.0	37	0	0.0
Springbrook	39	n/r	n/r	6	0	0.0	12	n/r	n/r	n/r	0	0.0	19	0	0.0
W. Johnson	41	0	n/r	n/r	0	0.0	13	0	0.0	n/r	0	0.0	25	0	0.0
Watkins Mill	8	0	n/r	0	0	0.0	n/r	0	0.0	n/r	0	0.0	n/r	0	0.0
Wheaton	22	0	n/r	5	0	0.0	8	0	0.0	6	0	0.0	n/r	0	0.0
Whitman	67	25	88.0	0	0	0.0	16	6	100.0	n/r	n/r	n/r	49	18	83.3
Wootton	18	0	n/r	0	0	0.0	13	0	0.0	0	0	0.0	5	0	0.0

Note: AP enrollment is not reported for groups with fewer than five students. AP exam participation and performance are not reported for groups with fewer than five exam takers. American Indian students are included with all students but are not reported separately.

Table B15
Number of MCPS AP Environmental Science Enrollees and AP Exam Takers in 2006 and
Percentage of 2006 AP Exam Scores of 3 or Higher by School and Race/Ethnicity

High School	All Students			African American			Asian American			Hispanic			White		
	N Enroll AP Course	N Took AP Exam	% Scores 3 or Higher	N Enroll AP Course	N Took AP Exam	% Scores 3 or Higher	N Enroll AP Course	N Took AP Exam	% Scores 3 or Higher	N Enroll AP Course	N Took AP Exam	% Scores 3 or Higher	N Enroll AP Course	N Took AP Exam	% Scores 3 or Higher
B-CC	69	39	84.6	n/r	0	0.0	n/r	n/r	n/r	n/r	n/r	n/r	62	37	86.5
Blair	55	36	83.3	5	5	80.0	9	n/r	n/r	n/r	n/r	n/r	38	27	85.2
Blake	25	18	38.9	n/r	n/r	n/r	n/r	n/r	n/r	n/r	n/r	n/r	16	12	50.0
Churchill	99	90	73.3	n/r	n/r	n/r	24	23	78.3	5	n/r	n/r	66	59	72.9
Damascus	65	57	47.4	0	0	0.0	n/r	n/r	n/r	n/r	n/r	n/r	59	52	50.0
Einstein	93	59	45.8	18	10	30.0	20	15	20.0	15	9	33.3	40	25	72.0
Gaithersburg	58	39	59.0	5	n/r	n/r	5	n/r	n/r	n/r	n/r	n/r	46	33	60.6
Kennedy	0														
Magruder	0														
Northwest	0														
Northwood	0														
Paint Branch	28	20	35.0	n/r	n/r	n/r	7	n/r	n/r	n/r	n/r	n/r	15	11	45.5
Poolesville	65	46	89.1	n/r	0	0.0	6	5	80.0	n/r	n/r	n/r	54	38	89.5
Quince Orchard	23	18	77.8	0	0	0.0	10	9	66.7	0	0	n/r	13	9	88.9
R. Montgomery	35	22	68.2	n/r	n/r	n/r	n/r	n/r	n/r	n/r	n/r	n/r	26	17	70.6
Rockville	0														
Seneca Valley	0														
Sherwood	42	42	81.0	n/r	n/r	n/r	n/r	n/r	n/r	n/r	n/r	n/r	34	34	85.3
Springbrook	12	11	27.3	6	5	0.0	n/r	n/r	n/r	0	0	0.0	n/r	n/r	n/r
W. Johnson	114	68	72.1	n/r	0	0.0	12	5	100.0	7	n/r	n/r	91	60	68.3
Watkins Mill	12	9	0.0	n/r	n/r	n/r	0	0	0.0	n/r	n/r	n/r	7	6	0.0
Wheaton	22	10	30.0	7	n/r	n/r	n/r	0	0.0	5	n/r	n/r	8	n/r	n/r
Whitman	140	80	73.8	n/r	0	0.0	8	5	60.0	5	n/r	n/r	125	73	75.3
Wootton	52	45	80.0	n/r	n/r	n/r	20	17	82.4	0	0	0.0	31	27	81.5

Note: AP enrollment is not reported for groups with fewer than five students. AP exam participation and performance are not reported for groups with fewer than five exam takers. American Indian students are included with all students but are not reported separately.