

# AT Tech Tip: Importing Digital Images Into Boardmaker Plus

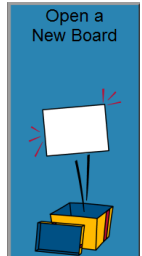


## InterACT Team

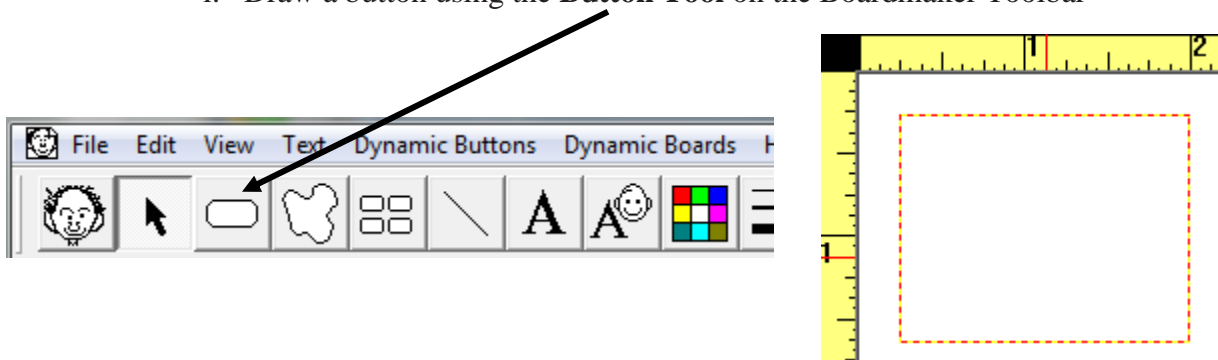
The Interdisciplinary Augmentative Communication & Technology Team

Software/Version: Boardmaker 6.1

### Importing Images from the Internet into a Boardmaker Plus Document



1. Launch Boardmaker Plus.
2. Click on **Open a New Board** on the left hand side of the menu that appears onscreen.
3. A new board appears onscreen.
  - a. Choose to paste a digital image into the blank document, or
  - b. Choose to paste a digital image into a button.
    - i. Draw a button using the **Button Tool** on the Boardmaker Toolbar



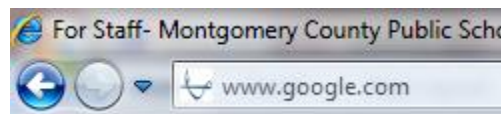
4. Minimize Boardmaker Plus by clicking on the minimize button in the upper right hand corner of the screen.



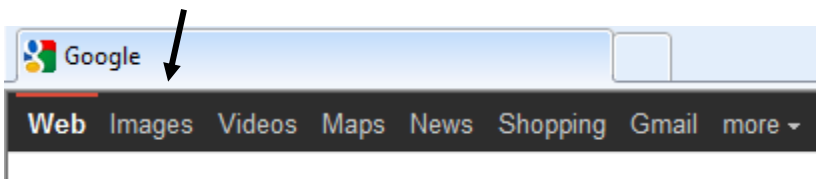
5. Launch Internet Explorer.



6. Go to the website [www.google.com](http://www.google.com).



7. Once [www.google.com](http://www.google.com) opens, click on **Images**.



8. In the Google text box, type "dog digging", then click **Search Images**.



## AT Tech Tip: Importing Digital Images Into Boardmaker Plus

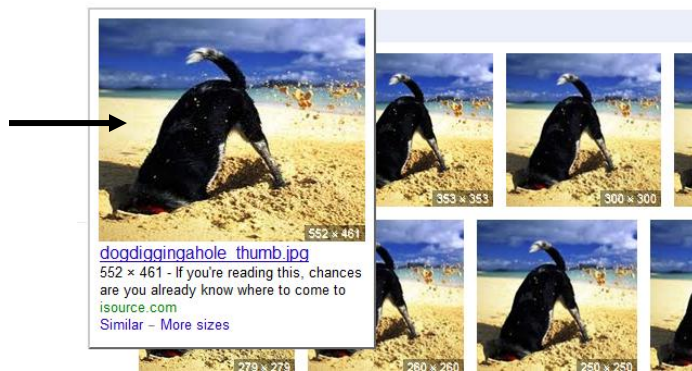
9. Scroll through the pictures provided and allow your cursor to hover over the picture you like. Details will appear below the picture.

10. Click on **More sizes**.



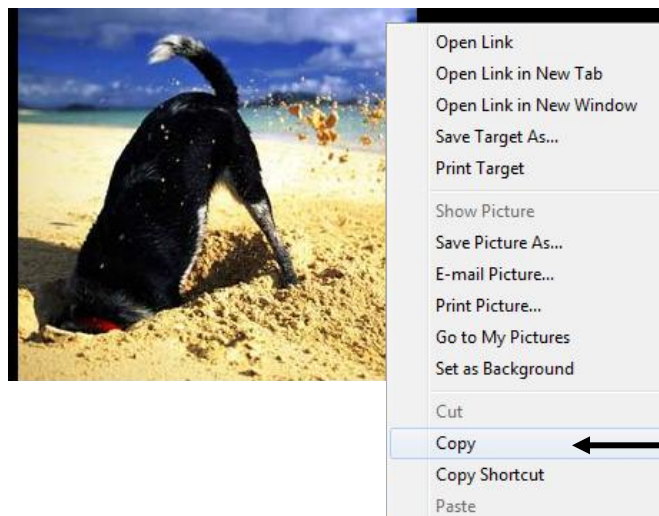
[dog-digging-a-hole.jpg](#)  
279 × 279 - When you see your dog start **digging**, turn on the sprinkler.  
[mbngmortgage.wordpress.com](#)  
[Similar](#) - [More sizes](#)

11. Click on a large size of the picture to see the actual size (instead of the thumbnail view).



12. Right-click on the actual size image to see a drop-down menu.

13. Highlight and select **Copy** (left-click).



## AT Tech Tip: Importing Digital Images Into Boardmaker Plus

14. Minimize Internet Explorer by clicking the minimize button in the upper right hand corner of the screen,

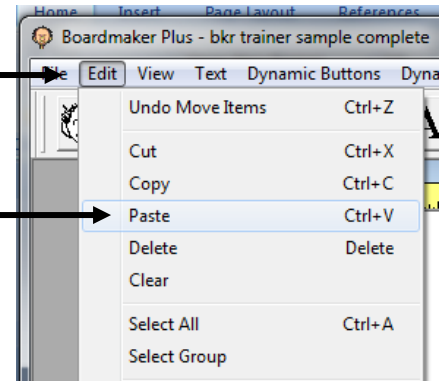


*or* click on the Boardmaker Plus icon on the taskbar of your computer to bring Boardmaker to the forefront.



15. Boardmaker Plus should now be in the forefront.

- a. To paste a picture into a blank document, go to the Menu Bar and select **Edit --> Paste**.
- b. To paste a picture into a button in the document
  - Select the **Pointer Tool** from the Boardmaker Toolbar
  - Click on the button you want to paste the picture in (orange dotted line will appear around the border)
  - Then go to the Menu Bar and select **Edit --> Paste**



The above sample board accompanies the sample grid shown in the [AT Tech Tip: Boardmaker Plus- Creating a Custom Grid \(Sample Adapted Writing Activity\)](#).

Note: Digital images from sources other than the internet can also be added to Boardmaker Plus. Open the photo using photo editing software and follow steps 12-15 above. Or, you can even right-click on the thumbnail of an image in your image viewer and follow steps 13-15 to add the image to your Boardmaker Plus document.