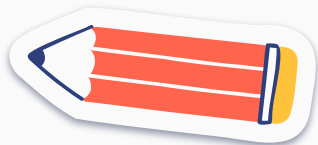
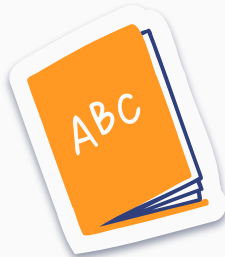


# Maryland School Report Card

Parent Meeting  
November 19, 2025





# Table of contents

Remember



**01**

**Introduction**

**02**

**MD Report Card**

**03**

**Tips**

**04**

**Closing**





## KMS MD School Report Card

MSDE Report Card is the overall school performance determined by a combination of academic and school quality indicators. The total earned points percent is provided as well as a percentile rank and a star designation.







To do...



KINGSVIEW MIDDLE SCHOOL 2026



**4 Stars**





# MAP R

Grade	Instructional Levels by RIT Score				
	>2 Years Below Grade-Level	>1 Year Below Grade-Level	Below Grade-Level	On Grade-Level	Above Grade-Level
3	<153	153-170	171-185	186-197	>197+
4	<171	171-185	186-197	198-205	>205
5	<186	186-197	198-205	205-210	>211+
6	<197	198-205	205-210	211-215	>215+
7	<205	205-210	211-215	216-218	>218+
8	<211	211-215	216-218	219-222	>222+
9	<215	216-218	219-221	222	>222
10	<219	219-222	222	223	>223+





# MAP M

**2025 mathematics student achievement norms**

	Fall		Winter		Spring	
Grade	Mean	SD	Mean	SD	Mean	SD
K	141	12	151	13	158	13
1	159	13	168	14	175	14
2	173	15	181	16	187	16
3	184	16	193	16	199	17
4	197	16	204	17	210	18
5	206	16	212	17	216	18
6	210	16	216	17	220	18
7	217	17	221	18	224	19
8	222	18	226	19	229	20



# SY24 Overview



## Kingsview Middle

2023 - 2024 School Report Card



4 OUT OF 5 STARS

Percentile Rank: 76 (Middle)

Kingsview Middle (0708)  
Grade Levels: Middle  
County: Montgomery County

18909 Kingsview Rd  
Germantown, MD 20874  
Phone: 240-740-7130

### HOW DID THIS SCHOOL DO OVERALL?

Overall school performance is determined by a combination of academic and school quality indicators. The total earned points percent is provided as well as a percentile rank and a star designation.

INDICATOR	POSSIBLE POINTS	EARNED POINTS*	ANNUAL TARGET	IMPROVEMENT
Academic Achievement	20.0	11.5	✖	✓
Academic Progress	35.0	23.3	na	✖
Progress in Achieving English Language Proficiency	10.0	2.2	✖	✓
School Quality and Student Success	35.0	23.7	na	✓
<b>TOTAL POINTS:</b>	<b>100.0</b>	<b>60.7</b>		

Total Earned Points: **60.7**  
Total Points Possible: **100.0**

=

**60.6%**

TOTAL EARNED PERCENT

\* Earned points may not equal total points due to rounding. ✓ =Met ✖ =Not Met

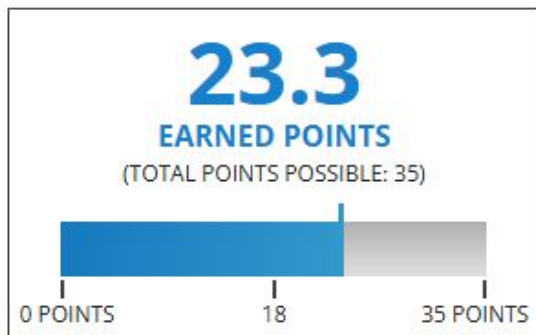


# SY24 Overview

## ACADEMIC PROGRESS

### HOW DID STUDENTS PERFORM ON OTHER ACADEMIC MEASURES AND GROWTH?

The academic progress indicator consists of multiple academic measures. Schools are measured on the growth of students over time on math and English language arts state tests, and on earning credit for a well rounded curriculum.



MEASURE	RESULTS	EARNED POINTS*
Percent Proficient Science	41.8%	1.5 out of 3.5
Percent Proficient Social Studies	57.7%	2 out of 3.5
Student Growth Percentile Mathematics	58.5	8.5 out of 12.5
Student Growth Percentile English Language Arts	60.5	8.5 out of 12.5
Credit for Well Rounded Curriculum	92.5%	2.8 out of 3.0

**23.3**  
EARNED POINTS

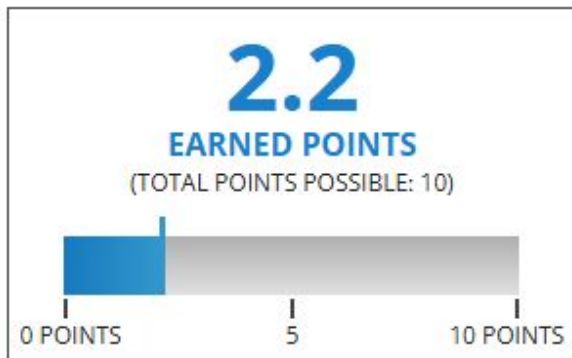


# SY24 Overview

## PROGRESS TOWARDS ENGLISH LANGUAGE PROFICIENCY

### HOW MANY MULTILINGUAL LEARNERS ARE MAKING PROGRESS TOWARDS LEARNING ENGLISH?

The progress towards English language proficiency indicator measures school success of multilingual learners on track toward achieving proficiency in the English language.



MEASURE	RESULTS	EARNED POINTS*
Multilingual Learners Making Progress Towards Learning English	21.8%	2.2 out of 10.0
		<b>2.2</b> <b>EARNED POINTS</b>



# SY25 Overview



## Kingsview Middle 2024 - 2025 School Report Card



Percentile Rank: 73 (Middle)

Kingsview Middle (0708)  
Grade Levels: Middle  
County: Montgomery County

18909 Kingsview Rd  
Germantown, MD 20874  
Phone: 240-740-7130

### HOW DID THIS SCHOOL DO OVERALL?

Overall school performance is determined by a combination of academic and school quality indicators. The total earned points percent is provided as well as a percentile rank and a star designation.

INDICATOR	POSSIBLE POINTS	EARNED POINTS*	ANNUAL TARGET	IMPROVEMENT
Academic Achievement	20.0	11.3	✗	✗
Academic Progress	35.0	21.3	na	✗
Progress in Achieving English Language Proficiency	10.0	2.4	✗	✓
School Quality and Student Success	35.0	25.5	na	✓
<b>TOTAL POINTS:</b>	<b>100.0</b>	<b>60.5</b>		

Total Earned Points: **60.5**  
Total Points Possible: **100.0**

=

**60.4%**

TOTAL EARNED PERCENT

\* Earned points may not equal total points due to rounding. ✓ = Met ✗ = Not Met

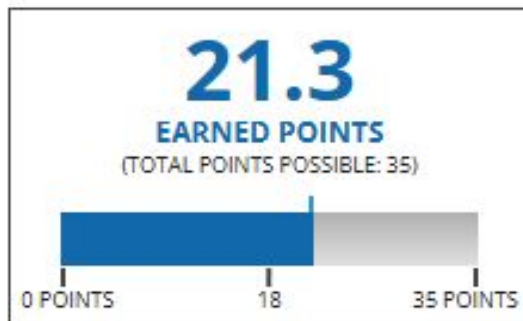


# SY25 Overview

## Academic Progress

### HOW DID STUDENTS PERFORM ON OTHER ACADEMIC MEASURES AND GROWTH?

The academic progress indicator consists of multiple academic measures. Schools are measured on the growth of students over time on math and English language arts state tests, and on earning credit for a well rounded curriculum.



MEASURE	RESULTS	EARNED POINTS*
Percent Proficient Science	52.9%	1.9 out of 3.5
Percent Proficient Social Studies	62.2%	2.2 out of 3.5
Student Growth Percentile Mathematics	58.0	8 out of 12.5
Student Growth Percentile English Language Arts	49.0	6.5 out of 12.5
Credit for Well Rounded Curriculum	92.9%	2.8 out of 3.0
		<b>21.3</b> EARNED POINTS



# SY25 Overview

## PROGRESS TOWARDS ENGLISH LANGUAGE PROFICIENCY

### HOW MANY MULTILINGUAL LEARNERS ARE MAKING PROGRESS TOWARDS LEARNING ENGLISH?

The progress towards English language proficiency indicator measures school success of multilingual learners on track toward achieving proficiency in the English language.



MEASURE	RESULTS	EARNED POINTS*
Multilingual Learners Making Progress Towards Learning English	23.8%	2.4 out of 10.0
		<b>2.4</b> EARNED POINTS



# ELA - Front



Maryland Comprehensive Assessment Program

GRADE 8 ELA/L

A

FIRSTNAME09 V. LASTNAME09

Date of Birth: 12/02/2012 ID: 1100000078 Grade: 8

Local Education Agency (LEA): SAMPLE DISTRICT NAME

SAMPLE SCHOOL NAME

MARYLAND

SPRING 2025

## English Language Arts/Literacy Assessment Report, 2024–2025

This report shows the level of proficiency attained by FIRSTNAME09 on the MCAP Assessment. The results from this summative assessment are a snapshot of your student's progress towards meeting the Maryland College and Career Readiness expectations. These results should be used with school and district level assessments to gauge your student's progress towards proficiency in English Language Arts/Literacy.

### How Can You Use This Report? C

Ask your student's teachers:

- What do you see as my student's academic strengths and areas for improvement?
- How will you use these test results to provide remediation or enrichment to my student during this academic year?
- How can I work with my student to support your efforts in improving my student's academic performance?

### MCAP Resources

For practice tests and additional resources pertaining to the MCAP English Language Arts and Literacy Assessments, please visit <http://marylandpublicschools.org/about/Pages/DAA/IT/Assessment/MCAP/ELAL.aspx>

### How Did FIRSTNAME09 Perform Overall?

Performance Level 2 D

The MCAP Performance Level Descriptors (PLDs) provide high-level descriptions of a student's ability to apply the knowledge and skills defined by the Maryland College and Career Ready Standards for English Language Arts/Literacy. See side bar of this report for specific information on your student's performance in the area of English Language Arts/Literacy.

- Level 4 Distinguished Learner
- Level 3 Proficient Learner
- Level 2 Developing Learner
- Level 1 Beginning Learner

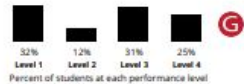


School Average  
LEA Average  
State Average

F



### How Students in Maryland Performed



The charts above allow you to compare your student's level of performance to other students who took the same assessment across the school, district, and state during the Spring administration.



# ELA - Back



How Did Your Student Perform in Reading and Writing?

FIRST NAME LAST NAME

## READING

Your student's score



## READING LITERACY

Your student performed about the same as other **Developing Learners** who demonstrated partial proficiency in their performance on this standards-aligned assessment. Students demonstrate proficiency by showing they can read and analyze fiction, drama, and poetry.



## READING INFORMATIONAL

Your student performed about the same as other **Beginning Learners** who did not yet demonstrate proficiency in their performance on this standards-aligned assessment. Students demonstrate proficiency by showing they can read and analyze nonfiction, history, science, and the arts.

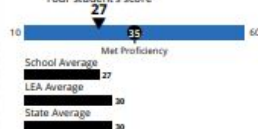


## VOCABULARY

Your student performed about the same as other **Developing Learners** who demonstrated partial proficiency in their performance on this standards-aligned assessment. Students demonstrate proficiency by showing they can use context to determine what words and phrases mean.

## WRITING

Your student's score



## WRITTEN EXPRESSION

Your student performed about the same as other **Beginning Learners** who did not yet demonstrate proficiency in their performance on this standards-aligned assessment. Students demonstrate proficiency by showing they can compose well-developed writing, using details from what they have read.

## WRITTEN CONVENTIONS

Your student performed about the same as other **Beginning Learners** who did not yet demonstrate proficiency in their performance on this standards-aligned assessment. Students demonstrate proficiency by showing knowledge of conventions and other important elements of language.

## LEGEND

Your student performed about the same as:



## English Language Arts/Literacy Performance Level Descriptors (PLDs)

**Level 4 Distinguished Learners:** Distinguished learners demonstrate advanced proficiency in their performance on this standards-aligned assessment, are well prepared for the next grade level or course, and are well prepared for college and career readiness. Students performing at this level may benefit from exploring advanced learning opportunities related to understanding and analyzing above-grade-level literary and informational text, showing understanding of the text when referring to details in the text and when supporting inferences drawn from the text, and using context to determine the meaning of words and phrases.

**Level 3 Proficient Learners:** Proficient learners demonstrate proficiency in their performance on this standards-aligned assessment, are prepared for the next grade level or course, and are on track for college and career readiness. Students performing at this level may need additional practice with understanding and analyzing grade-level literary and informational text, showing understanding of the text when referring to details in the text and when supporting inferences drawn from the text, and using context to determine the meaning of words and phrases.

**Level 2 Developing Learners:** Developing learners demonstrate partial proficiency in their performance on this standards-aligned assessment. Students performing at this level require additional academic support to ensure success in the next grade level or course and be on track for college and career readiness. Support may include reinforcement, practice, and guidance with understanding and analyzing grade-level literary and informational text, showing understanding of the text when referring to details in the text and when supporting inferences drawn from the text, and using context to determine the meaning of words and phrases.

**Level 1 Beginning Learners:** Beginning learners do not yet demonstrate proficiency in their performance on this standards-aligned assessment. Students performing at this level require substantial academic support to be prepared for the next grade level or course and be on track for college and career readiness. Support may include modeling, reinforcement, and more explicit practice with understanding and analyzing grade-level literary and informational text, showing understanding of the text when referring to details in the text and when supporting inferences drawn from the text, and using context to determine the meaning of words and phrases.



# Math - Front



Maryland Comprehensive Assessment Program

GRADE 8 MATHEMATICS

## Mathematics Assessment Report, 2024-2025

A

FIRSTNAME16 P. LASTNAME16

Date of Birth: 02/02/2012 ID: 1312810200 Grade: 8

Local Education Agency (LEA): SAMPLE DISTRICT NAME

SAMPLE SCHOOL NAME

MARYLAND

SPRING 2025

This report shows the level of proficiency attained by FIRSTNAME16 on the MCAP Assessment. The results from this summative assessment reflect a snapshot of your student's progress towards meeting the Maryland College and Career Readiness expectations. These results should be used with school and district level assessments to gauge your student's progress towards proficiency in mathematics.

### How Can You Use This Report?

Ask your student's teachers:

- What do you see as my student's academic strengths and areas for improvement?
- How will you use these test results to provide remediation or enrichment to my student during this academic year?
- How can I work with my student to support your efforts in improving my student's academic performance?

### MCAP Resources

For practice tests and additional resources pertaining to the MCAP Mathematics Assessments, please visit <https://www.marylandpublicschools.org/about/Pages/DAAIT/Assessment/MCAP/Math.aspx/>

### How Did FIRSTNAME16 Perform Overall?

Performance Level 3

The MCAP Performance Level Descriptors (PLDs) provide high-level descriptions of a student's ability to apply the knowledge and skills defined by the Maryland College and Career Ready Standards for Mathematics. See side bar of this report for specific information on your student's performance in the area of mathematics.

- Level 4 Distinguished Learner
- Level 3 Proficient Learner
- Level 2 Developing Learner
- Level 1 Beginning Learner



### School Average

748

LEA Average

721

State Average

736



### How Students in Maryland Performed



The charts above allow you to compare your student's level of performance to other students who took the same assessment across the school, district, and state during the Spring administration.



# Math - Back



## How Did Your Student Perform in Areas of Mathematics?

FIRST NAME LAST NAME



### CONTENT

J

Your student performed about the same as other **Developing Learners** who demonstrated partial proficiency of the grade level content. Students demonstrate proficiency of the grade level content by solving problems involving conceptual understanding, procedural knowledge, and application of number systems, expressions and equations, functions, geometry, statistics and probability.



### REASONING

Your student performed about the same as other **Developing Learners** who demonstrated partial proficiency of mathematical reasoning for this course or grade level. Students demonstrate proficiency of mathematical reasoning by solving problems and providing solutions that exhibit an ability to reason mathematically based on the course or grade level content.



### MODELING

Your student performed about the same as other **Proficient or Distinguished Learners** who demonstrated proficiency or advanced proficiency of mathematical modeling for this course or grade level. Students demonstrate understanding of mathematical modeling by solving problems and providing solutions that exhibit the ability to apply the modeling process based on the course or grade level content.

#### LEGEND

Your student performed about the same as:

● **Beginning or Proficient Learners**

● **Developing Learners**

○ **Beginning Learners**

K

L

### Mathematics Performance Level Descriptors (PLDs)

**Level 4 Distinguished Learners:** Distinguished learners demonstrate advanced proficiency in solving complex problems involving the number system, equations or expressions, functions, geometry, statistics, and probability, and demonstrates an ability to connect multiple grade-level concepts to conceptualize and apply mathematics to model, reason through, and solve problems efficiently, and relate mathematics to the real world. The students are well prepared for the next grade level or course and are well prepared for college and career readiness.

**Level 3 Proficient Learners:** Proficient learners demonstrate proficiency in solving problems involving the number system, equations or expressions, functions, geometry, statistics, and probability, and demonstrates an ability to conceptualize and apply mathematics to model, reason through, and solve problems efficiently, and relate mathematics to the real world. The students are prepared for the next grade level or course and are on track for college and career readiness.

**Level 2 Developing Learners:** Developing learners demonstrate partial proficiency in solving problems involving the number system, equations or expressions, functions, geometry, statistics, and probability, and may need some support in conceptualizing and applying mathematics to model, reason through, and solve problems efficiently, and in relating mathematics to the real world. The students need additional academic support to ensure success in the next grade level or course and to be on track for college and career readiness.

**Level 1 Beginning Learners:** Beginning learners do not yet demonstrate proficiency in solving problems involving the number system, equations or expressions, functions, geometry, statistics, and probability where the required mathematics is either directly indicated or uses common grade level procedures, and typically needs support in conceptualizing and applying mathematics to model, reason through, and solve problems efficiently, and in relating mathematics to the real world. The students need substantial academic support to be prepared for the next grade level or course and to be on track for college and career readiness.





2024 and 2025 Maryland School Survey Data by Topic, All Students and Instructional Staff

Kingsview Middle School		Student	Student	Student: Change from 2024 to 2025	Instructional Staff	Instructional Staff	Instructional Staff: Change from 2024 to 2025
Domain	Topic	2024	2025		2024	2025	
Community	Participation and Engagement	6.0	6.6	.6	7.5	8.8	1.3
	Respect for Diversity	5.6	6.0	.4	9.0	9.8	.8
Environment	Behavioral and Academic Supports	5.6	5.9	.3	7.7	9.1	1.4
	Physical Environment	1.4	1.7	.3	5.9	7.8	1.9
Relationships	Staff-student Relationships	6.9	7.1	.2	9.3	9.9	.6
	Student-student Relationships	2.8	3.0	.2	6.2	6.9	.7
Safety	Bullying	1.9	2.7	.8	8.1	9.3	1.2
	Emotional Safety	4.8	5.2	.4	7.7	8.6	.9
	Physical Safety	2.0	2.4	.4	6.3	8.0	1.7
	Substance Abuse	5.9	7.0	1.1	5.1	6.7	1.6
Instructional Support	Instructional Feedback	n/a	n/a	n/a	5.0	6.8	1.8
Topic Range	Benchmark Level and Interpretation						
Greater than 9	Most favorable perception of the topic						
Greater than 5.5 to 9	More favorable perception of the topic						
Greater than 2 to 5.5	Less favorable perception of the topic						
Less than or equal to 2	Least favorable perception of the topic						



# Testing Calendar for February - May 2025

<u>Name of Test</u>	<u>Subject</u>	<u>Date of Test</u>	<u>Grade Level</u>
ACCESS-WIDA	ESOL	February	6-8
MISA*	Science	March 17 & 19	8
MCAP -ELA	English	4/16-4/7 & 4/27- -4/28	6-8
MCAP - Math	Math	4/13-4/14 & 4/30-5/1	6-8
MCAP - Social Studies*	World Studies	5/12-5/13	8

Measures of Academic Progress (MAP) Assessments (MAP-R & MAP- M) will occur English and Math classes respectively between May 1- June 5th.



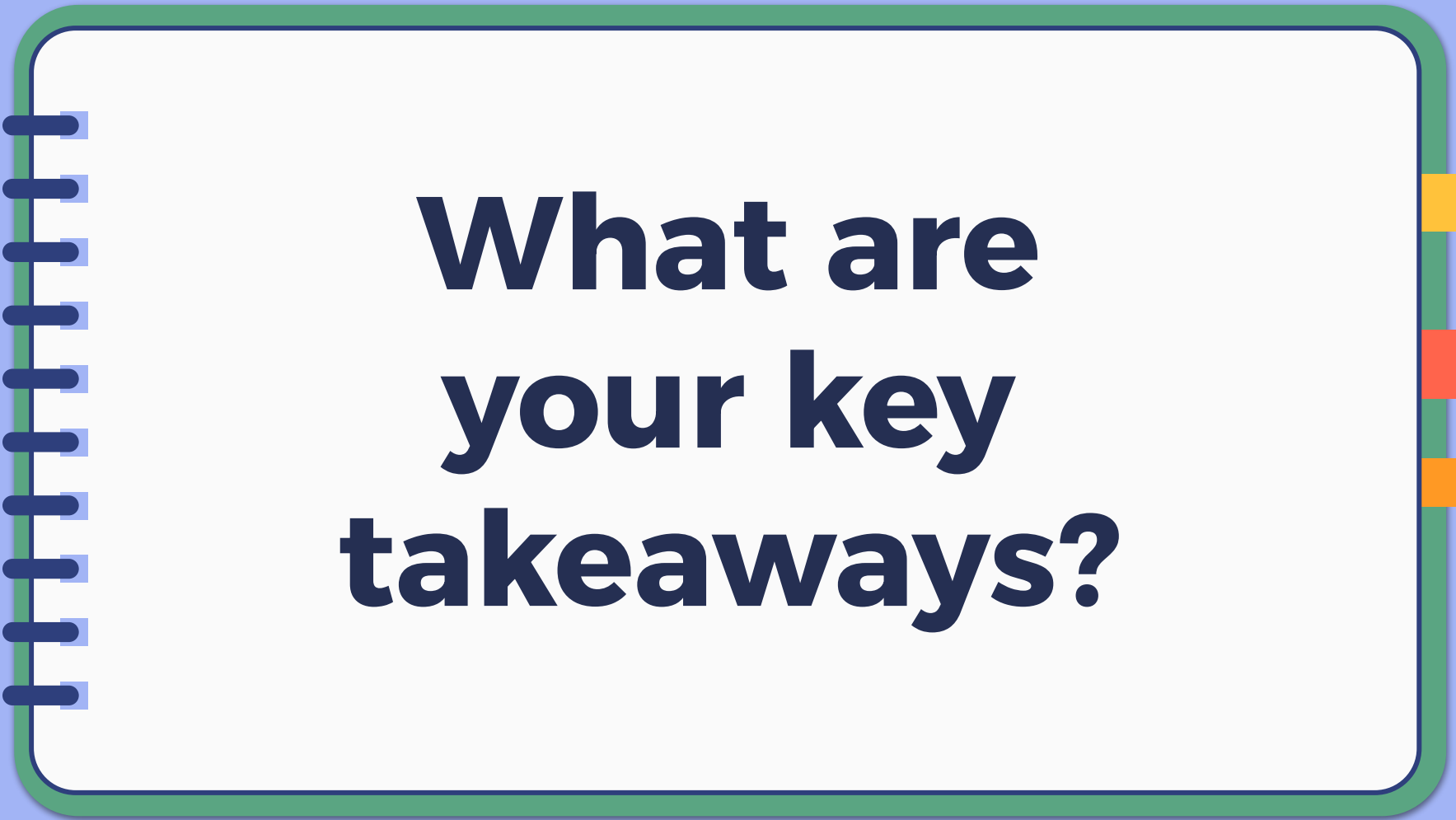
# Parents & Caregivers- Your support is key!



- Encourage students to practice their skills on IXL. Especially the week before each test!
  - Example: MISA test. Practice IXL Science at home daily a week before the test.
- Don't make routine medical appointments during the testing dates.
- Make sure students get a good night's sleep before testing.
- Make sure they get breakfast (home or school) before testing.







**What are  
your key  
takeaways?**

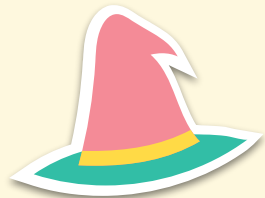


# SY25 Overview

MD Report Card - Accountability Measures and Results for FY2023, FY2024, and FY2025															
Indicator	Accountability Measures Reported	2023				2024				2025				2024-2025 Change Across Years: Percentage	2024-2025 Change Across Years: Measure Earned Points
		Student Count	Measure Result	Measure Possible Points	Measure Earned Points	Student Count	Measure Result	Measure Possible Points	Measure Earned Points	Student Count	Measure Result	Measure Possible Points	Measure Earned Points		
Academic Achievement	ELA: % Proficient MCAP ELA/Alt MCAP ELA Grades 6-8	920	66.0%	5.0	3.3	894	67.6%	5.0	3.4	879	63.6%	5.0	3.2	-4.0%	-.2
	ELA: Avg. Performance Level MCAP ELA/Alt MCAP ELA Grades 6-8	920	2.7	5.0	3.4	894	2.8	5.0	3.5	879	2.7	5.0	3.4	-0.6	-.1
	Math: % Proficient MCAP Math/Alt MCAP Math Grades 6-8	918	35.1%	5.0	1.8	899	37.5%	5.0	1.9	883	38.8%	5.0	1.9	1.3%	0
	Math: Avg. Performance Level MCAP Math/Alt MCAP Math Grades 6-8	918	2.2	5.0	2.7	899	2.2	5.0	2.8	883	2.3	5.0	2.8	0.6	0
	Academic Achievement Subtotal	n/a	n/a	n/a	n/a	n/a	n/a	n/a	n/a	n/a	56.5%	20.0	11.3	n/a	n/a
Academic Progress	ELA: Median Student Growth Percentile	888	65.0%	12.5	9.5	866	60.5%	12.5	8.5	843	49.0%	12.5	6.5	-11.5%	-2.0
	Math: Median Student Growth Percentile	576	59.0%	12.5	8.5	542	58.5%	12.5	8.5	531	58.0%	12.5	8.0	-.5%	-.5
	% Credit for Well Rounded Curriculum - Grade 8	311	89.4%	3.0	2.7	306	92.5%	3.0	2.8	326	92.9%	3.0	2.8	0.4%	0
	Science: % Proficient MCAP MISA 8	306	42.5%	3.5	1.5	306	41.8%	3.5	1.5	325	52.9%	3.5	1.9	11.1%	.4
	Social Studies: % Proficient MCAP Grade 8	304	57.6%	3.5	2.0	305	57.7%	3.5	2.0	325	62.2%	3.5	2.2	4.5%	.2
	Academic Progress Subtotal	n/a	n/a	n/a	n/a	n/a	n/a	n/a	n/a	n/a	60.9%	35.0	21.3	n/a	n/a
Progress in Achieving ELP	% English Learners Making Progress - Grades 6-8	73	19.2%	10.0	1.9	87	21.8%	10.0	2.2	84	23.8%	10.0	2.4	2.0%	.2
School Quality and Student Success	% Students NOT Chronically Absent - Grades 6-8	991	80.6%	15.0	9.0	959	84.8%	15.0	10.5	942	86.3%	15.0	11.0	1.5%	.5
	% Access to Well Rounded Curriculum - Grade 8	311	83.9%	10.0	8.4	306	81.0%	10.0	8.1	326	86.5%	10.0	8.7	5.5%	.6
	Student School Survey - Grade 6-8	929	3.9	7.0	2.7	917	4.3	7.0	3.0	906	4.8	7.0	3.3	.5	.3
	Educator School Survey	75	6.4	3.0	1.9	74	7.1	3.0	2.1	71	8.3	3.0	2.5	1.2	.4
	School Quality and Student Success Subtotal	n/a	n/a	n/a	n/a	n/a	n/a	n/a	n/a	n/a	72.8%	35.0	25.5		
	SUBTOTALS	n/a	n/a	100.0	59.4	n/a	n/a	100.0	60.7	n/a	n/a	100.0	60.5		
	TOTAL EARNED PERCENT =	Earned Points		59.4	59.4%	Earned Points		60.7	60.7%	Earned Points		60.5	60.5%		
		Possible Points		100.0		Possible Points		100.0		Possible Points		100.0			



# Parents & Caregivers- Your support is key!



- Encourage students to practice their skills on IXL. Especially the week before each test!
  - Example: MISA test. Practice IXL Science at home daily a week before the test.
- Don't make routine medical appointments during the testing dates.
- Make sure students get a good night's sleep before testing.
- Make sure they get breakfast (home or school) before testing.



# Report cards



Mercury is the closest planet to the Sun and the smallest one in the entire Solar System. This planet's name has nothing to do with the liquid metal, since it was named after the Roman messenger god. Its temperatures aren't as terribly hot as that planet's

Mercury takes a little more than 58 days to complete its rotation, so try to imagine how long days must be there! Since the temperatures are so extreme, albeit not as extreme as in Venus, Mercury has been deemed to be non-habitable for humans



# Whoa!

This could be the part of the presentation where you can introduce yourself, write...



**Your goals**







# How can a report card help the teacher?

Do you know what helps you make your point clear? Lists like this one:

- They're simple
- Organize your ideas clearly
- You'll never forget to buy milk!

And the most important thing: the audience won't miss the point of your presentation



# Advantages of the report card



## Mercury

Mercury is the closest planet to the Sun and the smallest one in the Solar System—it's only a bit larger than the Moon



## Venus

Venus has a beautiful name and is the second planet from the Sun. Venus is terribly hot even hotter than Mercury



# Characteristics of a report card



## Venus

Venus has a beautiful name and is the second planet from the Sun



## Mercury

Mercury is the closest planet to the Sun and the smallest one



## Saturn

Saturn is a gas giant and is composed mostly of hydrogen and helium





02



# Tips

This is the subtitle that makes it comprehensible





# Tips for teachers

## Venus

Venus has a beautiful name and is the second planet from the Sun

## Mercury

It's the closest planet to the Sun and the smallest one in the Solar System

## Mars

Mars is actually a cold place and is full of iron oxide dust

## Saturn

Saturn is a gas giant and is composed mostly of hydrogen and helium





# Tips for students



## Mercury

Mercury is the closest planet to the Sun

## Saturn

Saturn is composed of hydrogen and helium

## Jupiter

Jupiter is the biggest planet in the Solar System

## Mars

Despite being red, Mars is actually a cold planet

## Neptune

Neptune is the farthest planet from the Sun

## Venus

Venus is the second planet from the Sun





# Attendance

Student		Course	
Attendance			Number
Days present			25
Excused absences			2
Unexcused absences			1
Total absences			3



# Thanks!

Do you have any questions?

youremail@freepik.com

+91 620 421 838

yourcompany.com



**CREDITS:** This presentation template was created by **Slidesgo**, including icons by **Flaticon** and infographics & images by **Freepik**

Please keep this slide for attribution





# Alternative resources

Here's an assortment of alternative resources whose style fits the one of this template

## Vector

- Hand drawn notebook label collection I
- Hand drawn notebook label collection II





# Resources

Did you like the resources on this template? Get them for free at our other websites:

## Vector

- Hand drawn notebook label collection I
- Hand drawn notebook label collection II
- Hand drawn notebook label collection III
- Hand drawn notebook label collection IV



## Photos

- Assortment of desk elements with empty notebook
- Top view desk arrangement with notebook
- Portrait young female jumping
- Young asian person portrait
- Smiley handsome man posing



# Instructions for use

If you have a free account, in order to use this template, you must credit [Slidesgo](#) by keeping the [Thanks](#) slide. Please refer to the next slide to read the instructions for premium users.

## **As a Free user, you are allowed to:**

- Modify this template.
- Use it for both personal and commercial projects.

## **You are not allowed to:**

- Sublicense, sell or rent any of Slidesgo Content (or a modified version of Slidesgo Content).
- Distribute Slidesgo Content unless it has been expressly authorized by Slidesgo.
- Include Slidesgo Content in an online or offline database or file.
- Offer Slidesgo templates (or modified versions of Slidesgo templates) for download.
- Acquire the copyright of Slidesgo Content.

For more information about editing slides, please read our FAQs or visit our blog:

<https://slidesgo.com/faqs> and <https://slidesgo.com/slidesgo-school>



# Instructions for use (premium users)

As a Premium user, you can use this template without attributing [Slidesgo](#) or keeping the "[Thanks](#)" slide.

## You are allowed to:

- Modify this template.
- Use it for both personal and commercial purposes.
- Hide or delete the "Thanks" slide and the mention to Slidesgo in the credits.
- Share this template in an editable format with people who are not part of your team.

## You are not allowed to:

- Sublicense, sell or rent this Slidesgo Template (or a modified version of this Slidesgo Template).
- Distribute this Slidesgo Template (or a modified version of this Slidesgo Template) or include it in a database or in any other product or service that offers downloadable images, icons or presentations that may be subject to distribution or resale.
- Use any of the elements that are part of this Slidesgo Template in an isolated and separated way from this Template.
- Register any of the elements that are part of this template as a trademark or logo, or register it as a work in an intellectual property registry or similar.

For more information about editing slides, please read our FAQs or visit our blog:

<https://slidesgo.com/faqs> and <https://slidesgo.com/slidesgo-school>



# Fonts & colors used

This presentation has been made using the following fonts:

## Alexandria

(<https://fonts.google.com/specimen/Alexandria>)

## DM Sans

(<https://fonts.google.com/specimen/DM+Sans>)

#a2b4f5

#fafafa

#252f52

#ffc23b

#ff9924

#ff644c

#eb3737

#5aa582

#7289dd

#2e3f7c



# Storyset

Create your Story with our illustrated concepts. Choose the style you like the most, edit its colors, pick the background and layers you want to show and bring them to life with the animator panel! It will boost your presentation. Check out **how it works**.



Pana



Amico



Bro



Rafiki

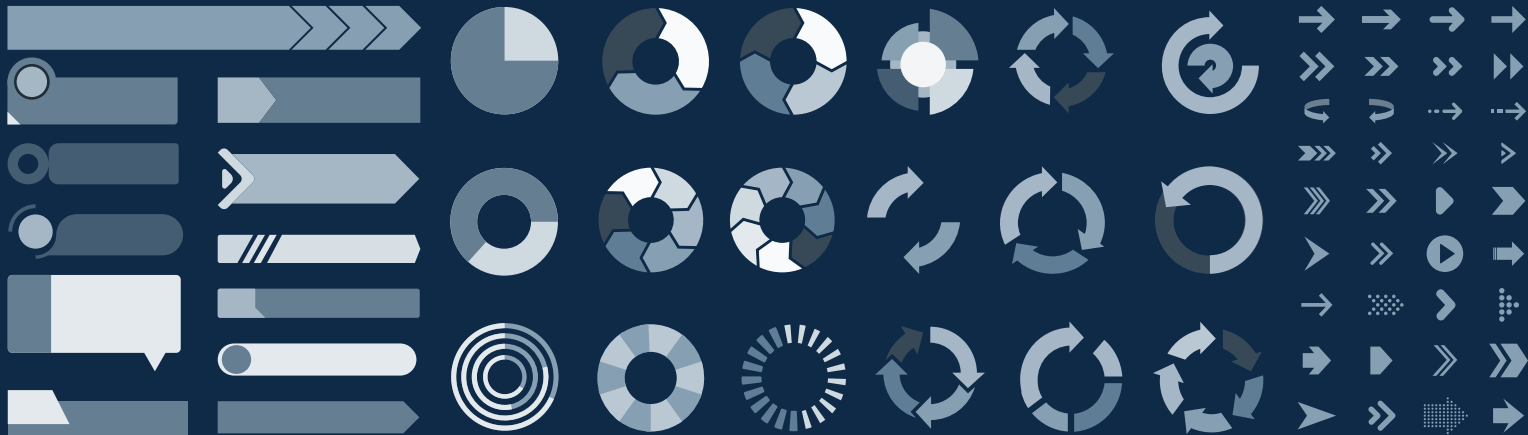


Cuate



## Use our editable graphic resources...

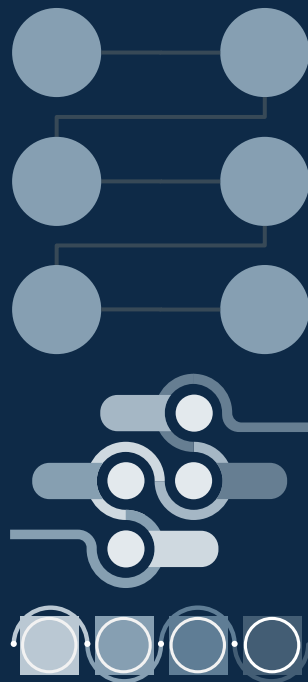
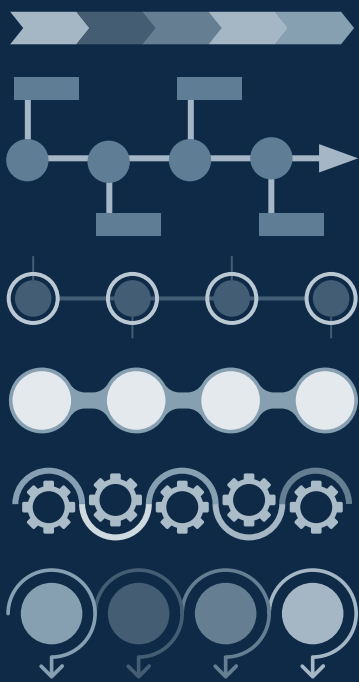
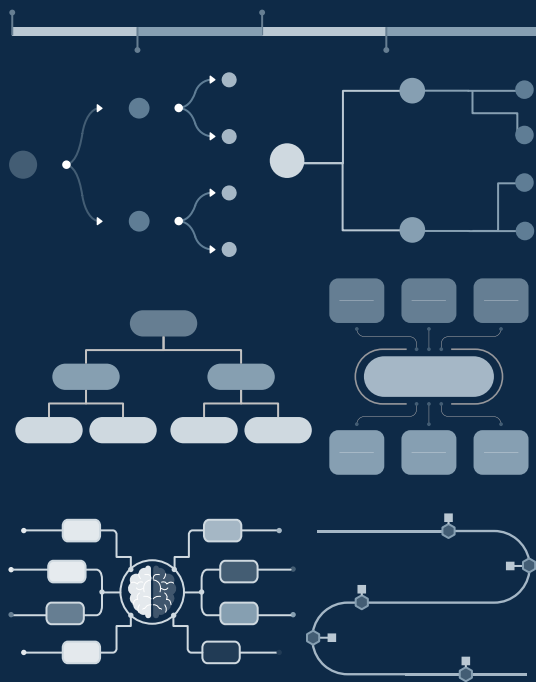
You can easily **resize** these resources without losing quality. To **change the color**, just ungroup the resource and click on the object you want to change. Then, click on the paint bucket and select the color you want. Group the resource again when you're done. You can also look for more **infographics** on Slidesgo.



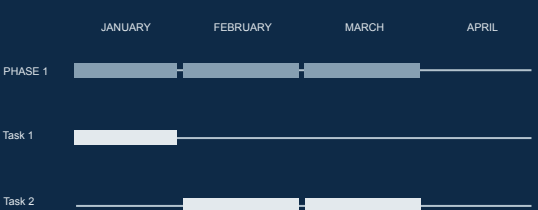
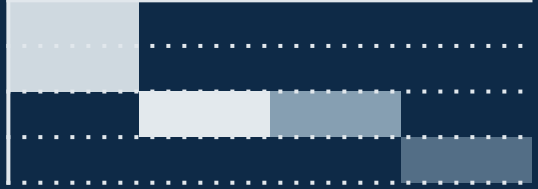
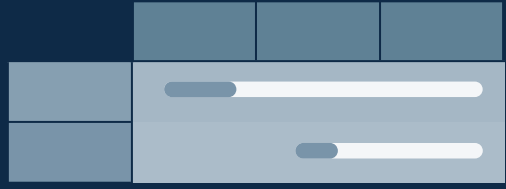
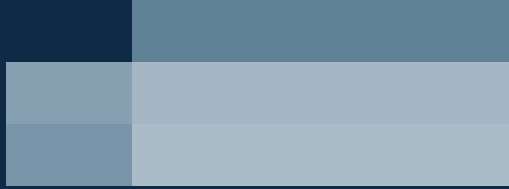
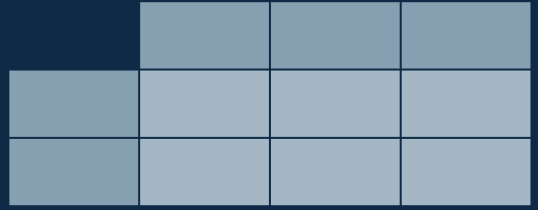
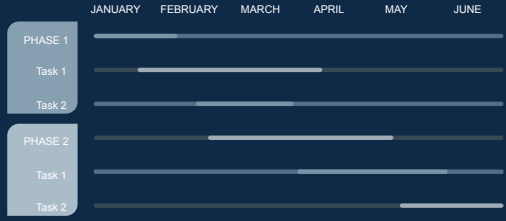
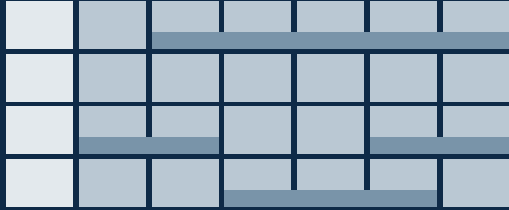




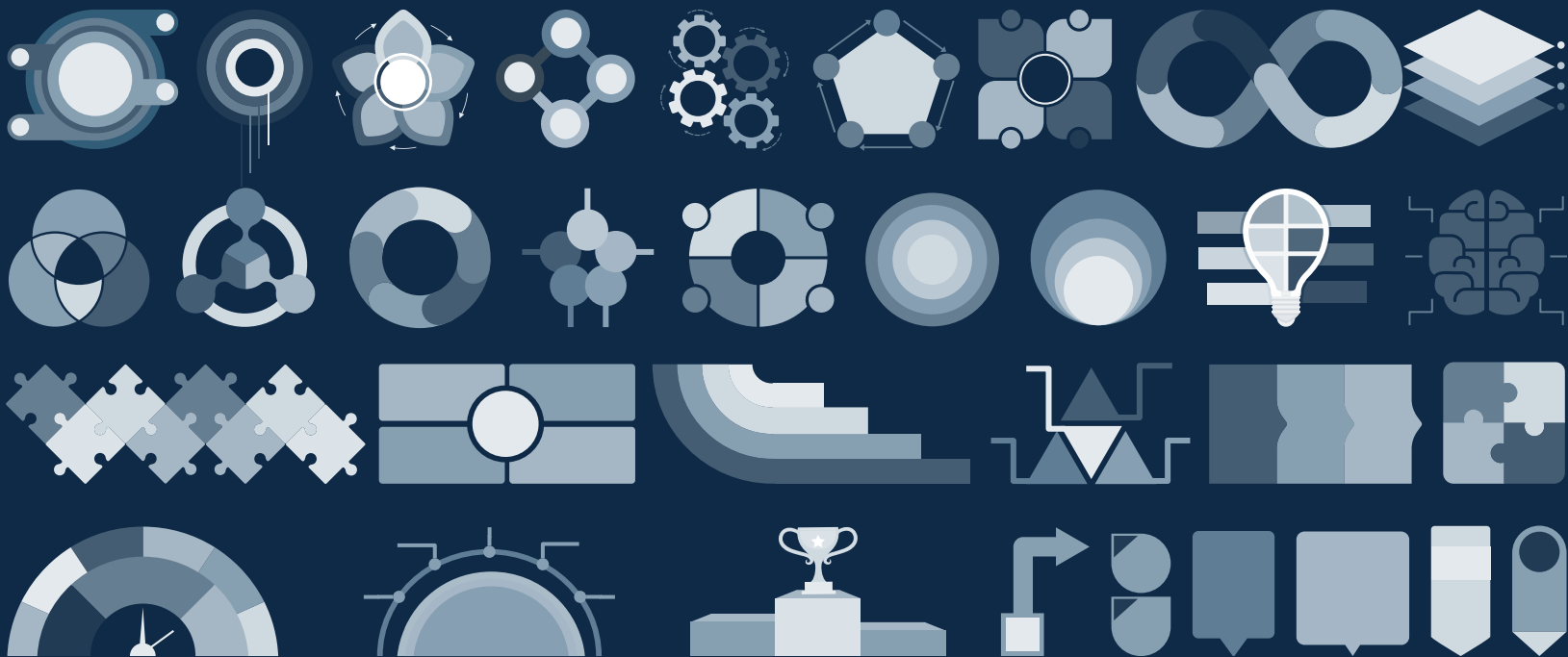


















# ...and our sets of editable icons

You can **resize** these icons without losing quality.

You can **change the stroke and fill color**; just select the icon and click on the **paint bucket/pen**.

In Google Slides, you can also use **Flaticon's extension**, allowing you to customize and add even more icons.





# Educational Icons



# Medical Icons





# Business Icons



# Teamwork Icons





# Help & Support Icons



# Avatar Icons





# Creative Process Icons



# Performing Arts Icons





# Nature Icons





# SEO & Marketing Icons





