

# **Special Education Advisory Committee SEAC**

May 27 2021



# Agenda

- Introductions from the co-chairs
- Updates from the Associate and Director
- Information about Virtual Academy

# Updates

**Mr. Kevin Lowndes, Associate  
Superintendent**

**Mr. Philip A. Lynch, Director**



# Graduation Update

- As we enter graduation season in June, Montgomery County will lift all restrictions on capacity, activities, and business operations on May 28, 2021.
- As a result, high schools will increase the number of tickets per expected graduate beyond the initial allocation of two (2) based on size of graduating class and facility/stadium capacity.



# Summer School Enrollment

Registration opened May 3, 2021

[daily update on enrollment and staffing](#)

Program	# Students
<b>IN-PERSON Local School Programs, Summer UP, and ELO (K-8)</b>	13,029
<b>VIRTUAL Program (All K-8 and ELO)</b>	5,666
<b>Central High School Summer Program</b>	3,389
<b>Extended School Year (ESY)</b>	2,818
<b>TOTAL as of 10:00 a.m. May 17, 2021</b>	<b>24,902</b>



# Summer Enrollment Demographics

Students	Virtual K-8 and HS	ELO	Local In-Person	Summer Up	Total Registrants	Percent of Registrants
ALL	8585	2220	9630	411	20846	100%
HI	1508	1142	2205	234	5089	24.41%
AS	3035	123	233	12	5503	26.40%
BL	1759	731	2265	109	4864	23.33%
WH	1791	153	2124	39	4107	19.70%
MU	471	61	672	15	1219	5.85%
IEP	755	293	1226	73	2347	11.26%
EL	986	831	1700	174	3691	17.71%
FARMS	1683	1405	2299	224	5611	26.92%



# Health Guidance Updates

- On May 18, 2021, Montgomery County achieved 50% of residents fully vaccinated, moving the county forward into Phase 3, effective May 28, 2021.
  - Lift all capacity, physical distancing, and mask restrictions for all residents (vaccinated and unvaccinated)
  - Masks still required in public transportation, health care, school buses, and in schools.

# Health Guidance Updates

On May 20, 2021, the Maryland Department of Health issued guidance specific to schools.

- Strongly recommends that masks be worn indoors, and outdoors at a school when physical distancing cannot be maintained.

For the remainder of this school year, MCPS will require masks when on school grounds. This is consistent with the federal, state, and local recommendations and recognizes that vaccinations for our student populations are still in progress.





# Programs for Students who are Deaf or Hard of Hearing (D/HOH)

## Specialized PPE

### Review of procurement of clear masks

- Benchmark with other districts and schools for the deaf
- Review by Department of Materials Management and Department of School Safety
- Collaboration with program supervisors

### Distribution of clear masks

- D/HOH classroom staff and D/HOH related service providers
- Interpreters
- Google request form

### Guidance to D/HOH staff

- Research data
- Auditory impact of clear masks
- Decision making guidance



# FM/DM Technology

## In person:

- IEP AT equipment provided and monitored by MCPS Audiologists
- Personal receivers
- Provides a highly effective Signal to Noise Ratio
- “Goes where the student goes” - class to class
  - Teachers use microphone - health and safety protocols
- Sound field system may be used if FM/DM system is not an option

## Virtual:

- Individual decision making and troubleshooting
  - external speakers
  - specific headphones
  - personal FM/DM receivers with patch cord connection or direct connect

**Programs for Students who are Deaf or Hard of Hearing (D/HOH)**



# D/HOH Summer Programming and Support

- **ESY**
  - County wide program PreK - grade 12
  - Itinerant services
    - Single service to address goal(s)
    - Related service in other ESY programs
- **Support to Summer School Programs**
  - Consultation to summer school program staff
  - ESY service on site
  - Interpreting service
  - Audiological consultative support

Programs for Students who are Deaf or Hard of Hearing (D/HOH)



# Virtual Academy Updates

SLT

Wednesday, May 26, 2021



# Why Have a Virtual Academy?



**Success**



**Flexibility**



**Additional  
Courses**



**Health**

# Admission Requirements



- Maintain a primary residence in the county
- Actively enrolled in an MCPS school

Recap from Last Week's Review:

[PROGRAM  
REQUIREMENTS](#)



# Program Details



Full day, five day  
a week  
instructional  
model



Full year commitment;  
transfer at marking  
period/semester  
transitions



Core courses to  
meet MSDE &  
graduation  
requirements



Not offering  
specialized  
programs at  
this time

# Program Details (cont.)



IEP/Special  
Services Review



In-person, on site  
engagement at  
times



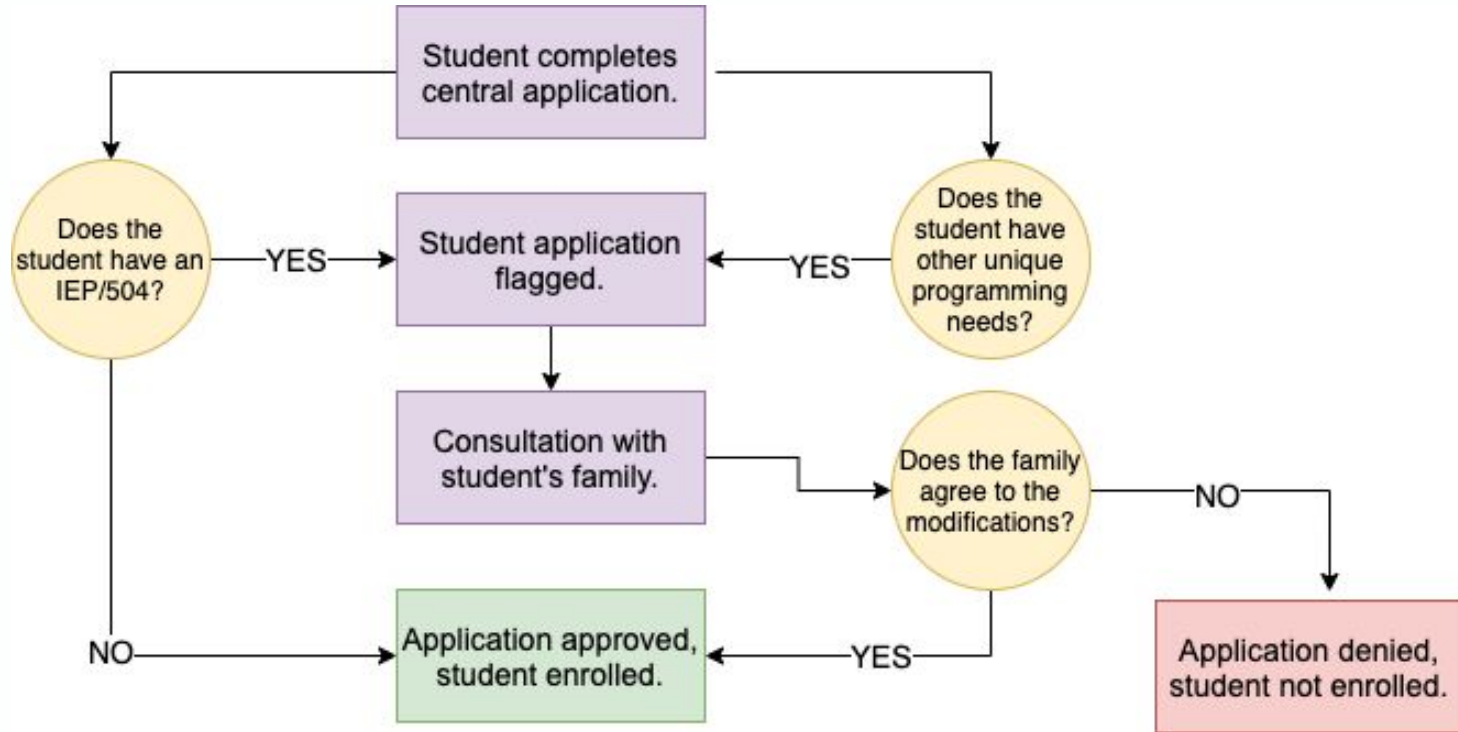
Report cards &  
diplomas via  
home school



Technology  
provided as  
needed



# Tentative Application Process



# Communication and Outreach

- Parent/Guardian information sessions
- Staff information sessions
- Application (multiple languages)
- ParentVUE | Paper | Hotline
- Outreach via bus
- Community partners

# Thank you for a fabulous year!

Thank you for your participation! Be on the lookout for a google survey for agenda items for next year.

