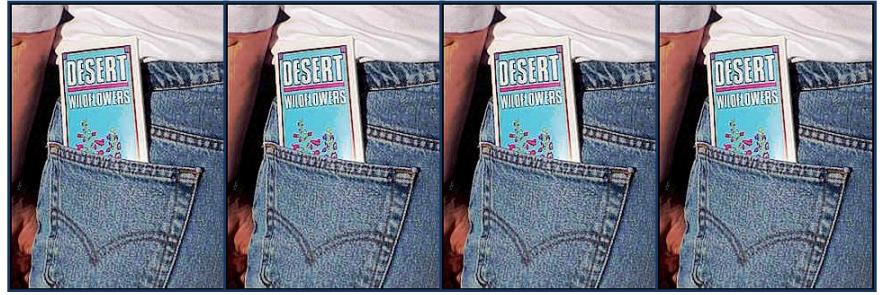


John Poole's **BACK POCKET**



November 4, 2011

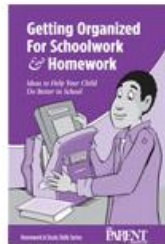
A Thought for Today:

“Winter is an etching, spring a watercolor, summer an oil painting and autumn a mosaic of them all.”

- Stanley Horowitz



Studying for and Taking Tests



Getting Organized for Schoolwork and Homework



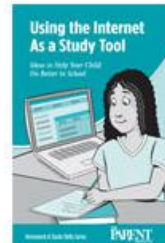
Why Studying is Important for Your Child's Future



Conquering Homework Challenges



Top Five Study Skills Every Student Needs



Using the Internet as a Study Tool

Something New for Parents on the JPMS Website

The next time you logon to our website, take a moment to click on the **Parents** tab and check out the new publications we have posted there. The Parent Involvement Library is published by the Parent Institute and is full of good information and ideas for you and your kids as they become more mature and independent learners.

The six pamphlets can be downloaded and printed or read online. Each one addresses a particular set of student skills from studying for tests to using the Internet to help you learn.

We know most students could benefit from building better study habits, and our kids know it, too. This week I met with two focus groups of mixed 6th, 7th and 8th graders to talk over how the school year has started and what could be improved as the year goes on. Students told me they wanted lessons on how to study built into their TAP time! Several students pointed out that you have to study differently for different kinds of material – and they're right. Studying for a math test could look very different from preparing for an English assessment. We'll work on those TAP lessons, and these brochures can help you support your kids at home.

You can click on this link: <http://www.montgomeryschoolsmd.org/schools/poolems/parents/index.aspx> to go directly to the Parent Involvement Library and see what it has to offer.

Student Leaders of the Pack

Each month, our staff selects five students from each team who have exemplified the Timberwolf PRIDE core values of **Purpose**, **Respect**, **Integrity**, **Dedication** and **Effort**. Sometimes, these students have earned recognition through scholarly excellence, but these values are personal as well as academic, so sometimes the honorees will be chosen for displaying the good citizenship that makes our school a better place to work and learn.

Student Leaders of the Pack for September received their certificates at a ceremony this morning. Parents were invited to attend, a light breakfast was served, and photographs were taken of each award winner for display in the school lobby.

Congratulations to these great kids! We are very proud of the September Leaders of the Pack!



6TH GRADE

Purpose – **Avery Whitney-Blum**
Respect – **Gavin Prebilic**
Integrity – **James Royal**
Dedication – **Michelle Moraa**
Effort – **Ray Kinzie**

7TH GRADE

Purpose – **Daria Sharifi**
Respect – **Kenydi Cross**
Integrity – **Tucker Ross**
Dedication – **Brandon Kocur**
Effort – **Taneka Jackson**

8TH GRADE

Purpose – **Alesya Sarakhman**
Respect – **Nicholas Kuhn**
Integrity – **Andrew Kocur**
Dedication – **Rachel Peterson**
Effort – **Shirley Wolz**

Hallway Heroes

Hallway Heroes are students we honor for demonstrating exemplary **PRIDE** behaviors as they move from class to class, helping to keep our hallways safe and comfortable for everyone.

The students recognized below consistently demonstrate **Purpose**, **Respect**, **Integrity**, **Dedication** and **Effort** everywhere they go at JPMS. They are **Hallway Heroes** and we are proud to celebrate their high expectations and their Timberwolf PRIDE!



Daniel Ballew
Elias Garcia
Elizabeth Parise

Ryan Dalrymple
Allie Goldman
Olivia Romano

Kaley Fisher
Nicholas Kuhn
Melanie Staszewski

Congratulations to our new

SGA Officers

President – Zach Kovach
Vice President – Mackenzie Gross
Secretary – Julia Fisher
Treasurer – Kaley Fisher



Thanks to Mr. Boettner for taking the photo!

Math Night

Tuesday, November 15

- + Games
- + Prizes
- + Information about the math curriculum and how to prepare your children for high school opportunities

Pizza dinner at 6:00

Activities begin at 6:40

Fun for the whole family!

Did you receive a 2011-12 JPMS Student Directory?

If you did not, would you like one?

Of course you would!

**By joining the PTA you
will receive a
complimentary
Student Directory.**

Contact Lori Kocur at
Kocurs@verizon.net
to become a PTA

Student Town Hall with Dr. Starr

Have a question you'd really like to ask the new MCPS superintendent, Dr. Joshua Starr? Now's your chance!

Dr. Starr wants to hear from students about what's working well in MCPS and what the school system can do to improve. He'll be holding a town hall meeting with students at Quince Orchard High School on November 9. All students are invited to go to www.mcpsStudentTownHall.org between now and November 9 to submit questions or comments via email or Twitter, and Dr. Starr will choose some to answer at the town hall meetings.

Remember!
Daylight Savings Time Ends
Sunday, November 6
Time to set your clocks
back one hour!

Student Service Learning (SSL) Notes Give a Little Time.... Make a Big Difference

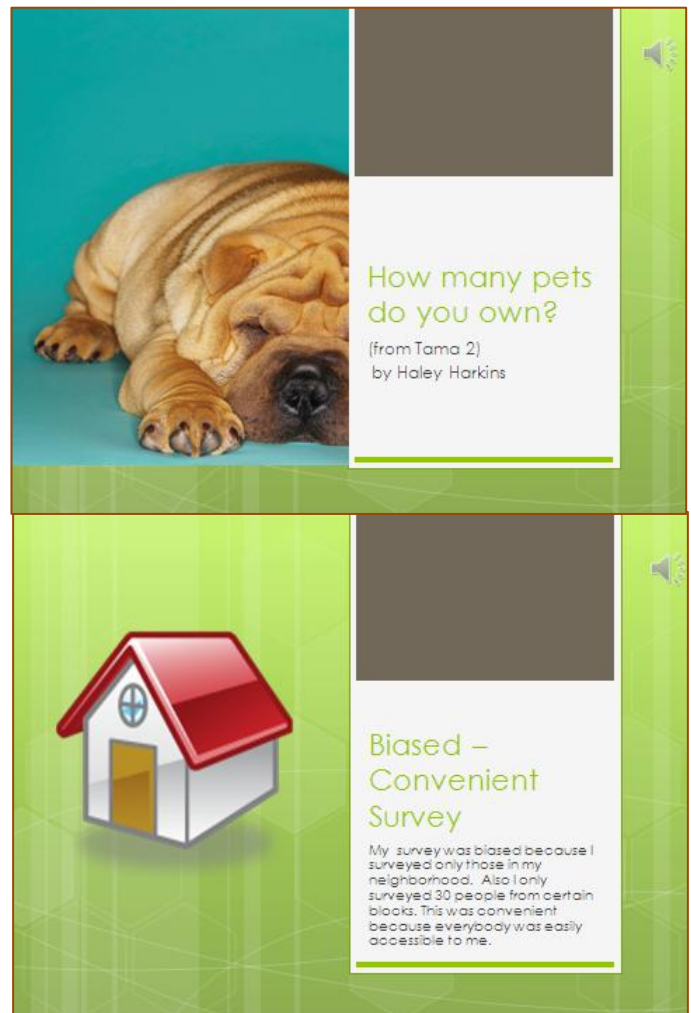
- Check the report card to see SSL hours reported are reflected. Contact Mrs. Arnold, our school SSL coordinator, with any discrepancies. Keep copies of all SSL documentation.
 - Holidays and early release days are great times for SSL involvement. Plan ahead!
 - Remember: a maximum of 8 SSL hours can be earned in a 24-hour period.
 - All service for which SSL hours are desired must be supervised by an adult representing an official nonprofit organization...not a parent or relative.
 - Plan now to be involved in SSL activities over Winter Break. Look for opportunities on the SSL Web site www.mcpsssl.org, or listen for opportunities promoted at school.

SSL Opportunity: Brookside Gardens Needs Garden of Lights Volunteers!

- Brookside Gardens needs volunteer help for the upcoming Garden of Lights exhibit, November 25th – January 8th. Student Volunteers serve as Show Monitors and Conservatory Docents. Volunteer shifts are 5:00p.m.-10:00p.m. and a minimum commitment of 4 shifts is required. Volunteers must be 14 or older, or 11-13 if volunteering with a parent or guardian.
- Training is November 2nd, from 7:00p.m.-9:00p.m. at the Brookside Gardens Visitor Center Auditorium, at 1800 Glenallan Ave, Wheaton, MD. Please email to mcp-gardenvolunteer@montgomeryparks.org or call 301.962.1429 with any questions or to RSVP for training. All volunteers must fill out an application, click the link for a more detailed job description and to fill out an application.

Statistics Projects Combine Math and Technology

Mrs. Hanks' IM classes have produced some great PowerPoint presentations to show the results of surveys they created and analyzed during their unit on statistics. Students learned what makes a survey biased or unbiased and how data can be manipulated to communicate accurately or to mislead the reader. This is important for 21st Century kids to understand, and they did a great job! Here are a few slides from some sample presentations.



SURVEY TECHNIQUE

I asked the 28 people entering Selby's Market
 September 20th from 7:05 – 7:30 PM
Population – Selby's shoppers
Population Size – 28 asked; 27 answered
Sampling Technique – Asked every person entering Selby's in the time period of 7:05 – 7:30 PM on September 20th

MEASURES OF CENTRAL TENDENCY

- Mean - 6.96
- Median – 4
- Mode – 3

By: Kat Creedon



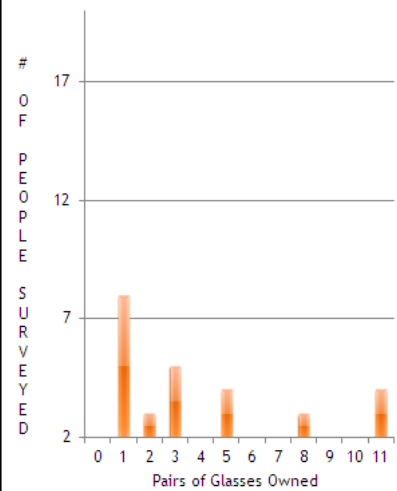
How many pairs of glasses do you have???



Table of the Data

Pairs of glasses owned	# People surveyed
0	1
1	8
2	3
3	5
4	0
5	4
6	2
7	0
8	3
9	1
10	2
11	4

Misleading Graph



How many pets do you have?

By Carmela Wasilik

Hanks period 5



Measures of central tendency.

The mean is.....

1.8

The median is.....

1

The mode is.....

1

The best measure of central tendency would be mean. It would be mean because the data is close together and there are no outliers.

Mean Median + Mode

Winter Weather Is Already Here!

Our sudden snow last week made it clear we need to be thinking about the winter weather that will inevitably come our way. Winter weather emergencies, such as snow and ice, may cause disruptions in school operations, including the closure of school, a delayed opening, or an early dismissal. Here is some information about the procedures used when such disruptions occur and about the weather contingency plan that would add student instructional days to the end of the scheduled school year if schools are closed for more than four days due to weather emergencies.

Closure of School

When schools are closed systemwide, all instructional programs and extracurricular activities in schools are canceled. Private day-care providers in school buildings may elect to stay open if the schools are closed but the administrative offices are open. In extreme conditions, administrative offices may also be closed. If this occurs, private day-care programs located in school buildings are closed as well.



Delayed Opening

A delayed opening means that schools open two hours later than scheduled. All buses operate on the same delayed schedule and, therefore, the pick-up times are two hours later than normal. When elementary schools open on a delayed schedule, the following programs are canceled—morning sessions of Head Start, prekindergarten, and other specialized programs or field trips scheduled before 10:30 a.m.; e.g., the Thomas Edison High School of Technology morning session. Activities that begin after 10:30 a.m. will be held as scheduled. Afternoon sessions of prekindergarten begin at the regular time. Parents should continue to check for radio, television, or Web announcements in the event a decision to delay the opening of schools is reconsidered and a decision to close schools for the day is made (by 7:00 a.m.).

Early Dismissal

An early dismissal means that schools will close 2.5 hours earlier than scheduled. All buses operate on that same early schedule and, therefore, drop-off times are 2.5 hours earlier than normal. When elementary schools close early, afternoon prekindergarten and other early childhood programs are canceled, as well as any special programs or field trips scheduled after 10:30 a.m. Morning prekindergarten and morning half-day Head Start students will be dismissed at 10:30 a.m.

Public Announcements

Information about school operations is announced publicly as soon as possible on area radio and television stations, Montgomery County Public Schools (MCPS) Cable TV (Comcast Channel 34, Verizon FIOS Channel 36, RCN Channel 89), Outlook, on the Internet at www.montgomeryschoolsmd.org, and on a recorded telephone message at 301-279-3673. Emergency announcements are available by signing up for MCPS *QuickNotes* and *Alert MCPS* text and e-mail notifications on the school system's home page. If schools are closed or delayed, the announcement is made no later than 6:00 a.m. (or the night before if possible). If schools are closing early, the announcement is made by 11:00 a.m.

Emergency Weather Contingency Plan

An emergency weather contingency plan will add student instructional days to the end of the scheduled school year if schools are closed more than four days because of weather emergencies. The planned school year for students ends on Tuesday, June 12, 2012. However, if schools are closed for more than four days due to weather emergencies, the following schedule would extend the school year in order to add the necessary make-up days:

1. If schools are closed for five days, the school year will be extended by one day to June 13, 2012.
2. If schools are closed for six days, the school year will be extended by two days to June 13 and June 14, 2012.
3. If schools are closed seven days, the school year will be extended by three days to June 13, June 14, and June 15, 2012.
4. If schools are closed for eight days, the school year will be extended by four days to June 13, June 14, June 15, and June 18, 2012.
5. If schools are closed nine days, the school year will be extended by five days to June 13, June 14, June 15, June 18, and June 19, 2012.

Weather Conditions and Decisions

The school system uses a variety of sources of information to determine whether to close schools, delay the opening of schools, or dismiss schools early. These sources include actual physical inspection of road and school conditions by Department of Transportation officials and other staff at areas throughout the county, and an analysis of independent reports from the National Weather Service, Accu-Weather, and the news media. The most severe weather conditions within the county are used as the basis for decision making. Consistent

procedures are maintained in order to respond quickly to emergency weather conditions and protect the safety and well-being of students.

All public schools within Montgomery County adhere to the same schedule relating to emergency weather conditions. The decision to change school operations is made by the superintendent of schools or his designee and affects all schools within the school system.

The following section provides the same information in Spanish.

Preparamos por el mal tiempo de invierno



Las emergencias por mal tiempo durante el invierno, como ser cuando cae nieve o hielo, pueden causar alteraciones en las actividades escolares, incluyendo el cierre de escuelas, demoras en el inicio de la jornada escolar o cierre de las escuelas antes de su horario habitual. Esta carta proporciona información acerca de los procedimientos que se deben seguir en casos como los anteriormente mencionados. Además, ofrece información acerca del plan de emergencia por inclemencias del tiempo, el cual sumaría días adicionales de instrucción al final del ciclo escolar regular, en caso que las escuelas deban cerrar por más de cuatro días a causa de una cantidad excesiva de días de emergencia debido a tiempo inclemente.

Cierre de Escuelas

Cuando las escuelas del sistema escolar deben permanecer cerradas, todos los programas de enseñanza y las actividades extracurriculares en establecimientos escolares se cancelan. Las guarderías privadas en establecimientos escolares pueden optar por permanecer abiertas si hay cierre de escuelas, siempre y cuando las oficinas administrativas se mantengan abiertas. En condiciones extremas, las oficinas administrativas podrían también cerrar. Si eso ocurriese, las guarderías privadas que operan en establecimientos escolares también deberán cerrar.

Demora en el Inicio de la Jornada Escolar

Una demora en el inicio de la jornada escolar significa que las escuelas abrirán dos horas después de su horario habitual. Todos los autobuses escolares observarán ese mismo cambio de horario y por lo tanto recogerán a los estudiantes en sus paradas regulares dos horas más tarde del horario habitual. Cuando las escuelas elementales abren más tarde de lo habitual, los siguientes programas quedan cancelados por ese día—las sesiones de la mañana de Head Start de media jornada, prekindergarten y otros programas especializados o excursiones escolares programadas para antes de las 10:30 a.m.; por ejemplo, la sesión de la mañana en Thomas Edison High School of Technology. Las actividades que comienzan después de las 10:30 a.m., se realizan según lo programado. Las sesiones de prekindergarten de la tarde comienzan en su horario habitual. Los padres deberán estar atentos continuamente a los anuncios que se transmiten por radio, televisión y a través del Internet, en caso de que sea necesario modificar la decisión de abrir las escuelas más tarde y en cambio se deba decidir cerrar las escuelas por todo el día. De ser así, se anunciará la decisión a las 7:00 a.m.

Cierre Antes del Horario Habitual

Cerrar las escuelas temprano significa que las clases finalizan dos horas y media antes de su horario habitual. Todos los autobuses escolares observarán ese mismo cambio de horario y por lo tanto dejarán a los estudiantes en sus paradas regulares dos horas y media más temprano del horario habitual. Cuando las escuelas elementales cierran temprano, los programas de prekindergarten y otros programas para niños de temprana edad quedan cancelados por ese día, como así también cualquier otro programa especial o

excursiones escolares programadas para después de las 10:30 a.m. Los estudiantes de la sesión de la mañana de prekindergarten y de la sesión de la mañana de Head Start de media jornada se retirarán de la escuela a las 10:30 a.m.

Anuncios Públicos

Información acerca de las operaciones escolares se anuncia públicamente cuanto antes posible, a través de las estaciones de radio y televisión, por Montgomery County Public Schools (MCPS) TV por Cable (Canal 34 de Comcast, Canal 36 de Verizon FIOS, Canal 89 de RCN), Outlook, por Internet ingresando a www.montgomeryschoolsmd.org y por mensaje telefónico grabado, llamando al teléfono 301-279-3673. Los anuncios de emergencia se pueden recibir por correo electrónico suscribiéndose al boletín informativo QuickNotes de MCPS y a través del servicio de mensajes de texto y correo electrónico Alert MCPS (Alerta MCPS). Si las escuelas deben permanecer cerradas, o si se demora el inicio de la jornada escolar, el anuncio se difunde a más tardar a las 6:00 a.m. (o la noche anterior, si fuese posible). Si las escuelas deben cerrar temprano, el anuncio se difunde a más tardar a las 11:00 a.m.

Plan de Emergencia Por Tiempo Inclemente

Un plan de emergencia debido a tiempo inclemente sumará días adicionales de instrucción al final del ciclo escolar regular, si las escuelas deben permanecer cerradas por más de cuatro días debido a tiempo inclemente. El ciclo escolar regular para los estudiantes está programado a finalizar el día martes, 12 de junio de 2012. Sin embargo, si las escuelas debiesen cerrar por más de cuatro días por inclemencias del tiempo, el ciclo escolar será extendido para aumentar los días que sean necesarios para recuperar los días lectivos perdidos, como se indica a continuación:

1. Si las escuelas estuviesen cerradas por cinco días, el ciclo escolar será extendido por un día, hasta el 13 de junio de 2012.
2. Si las escuelas estuviesen cerradas por seis días, el ciclo escolar será extendido por dos días, que serán el 13 y el 14 de junio de 2012.
3. Si las escuelas estuviesen cerradas por siete días, el ciclo escolar será extendido por tres días, que serán los días 13, 14 y 15 de junio de 2012.
4. Si las escuelas estuviesen cerradas por ocho días, el ciclo escolar será extendido por cuatro días, que serán los días 13, 14, 15 y 18 de junio de 2012.
5. Si las escuelas estuviesen cerradas por nueve días, el ciclo escolar será extendido por cinco días, que serán los días 13, 14, 15, 18 y 19 de junio de 2012.

Las Condiciones del Tiempo y las Decisiones

El sistema escolar utiliza diversas fuentes informativas para determinar si se deben cerrar las escuelas o si se debe demorar el inicio de la jornada escolar o cerrar las escuelas antes de su horario habitual. Entre estas fuentes se incluye a funcionarios de Department of Transportation y otros miembros del personal de las diversas áreas del condado que inspeccionan personalmente y verifican las condiciones de las rutas y de las escuelas, y que efectúan un análisis de los informes independientes provenientes de National Weather Service, Accu-Weather y demás medios noticiosos. Para tomar las decisiones referentes a las condiciones climáticas se utilizan como base los lugares más severamente afectados dentro del condado. Se mantienen procedimientos sistemáticos para responder rápidamente a condiciones de emergencia debido a tiempo inclemente, para así proteger la seguridad y el bienestar de los estudiantes.

Todas las escuelas públicas de Montgomery County se rigen por el mismo horario en cuanto a condiciones de emergencia por mal tiempo. La decisión de modificar las actividades escolares es responsabilidad del superintendente de escuelas o una persona designada por el superintendente y esa decisión afecta a todas las escuelas del sistema escolar.

VOLUNTEER YOUR TIME and JOIN THE PTA

- Sharon Armstrong - President
- Marilyn Soltis - Vice President
- Dawn Albert - Vice President
- Dreama Hemingway - Secretary
- Sue Van Meter – Treasurer
- Lori Kocur – Membership & Volunteers
- Anne Donovan – Staff Appreciation

Yankee Candle orders will be distributed before Thanksgiving break – stay tuned for more details!

It is always worthwhile and never too late to join John Poole Middle School's PTSA.

Your membership entitles you to receive the 2011-2012 JPMS Student Directory at no charge!

Please contact Lori Kocur at kocurs@verizon.net for membership information or to register as a JPMS Parent Volunteer. Once you are a registered volunteer, you will receive emails when opportunities to help out at school arise. It's as easy as that!

Show your kids how much you care and how important their school experience is to you – register to volunteer today!

Membership and volunteer forms are available at the JPMS website:

[http://www.montgomeryschoolsmd.org/uploadedFiles/schools/poolems/parents/13\[1\]%20ptsa%20volunteer%20form.pdf](http://www.montgomeryschoolsmd.org/uploadedFiles/schools/poolems/parents/13[1]%20ptsa%20volunteer%20form.pdf)

THANK YOU!

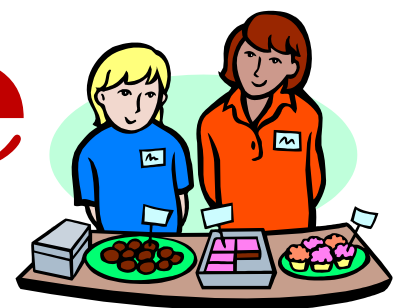
- Rebecca Fisher for completing the School Directory
- Lori Kocur for filling out all the PTA member cards.

You Rock!

Bake Sale

Sunday, November 6

3:00 – 5:00 pm at Selby's



Support the Leo's Club and our effort to provide Thanksgiving baskets for families in our community!

November 7, 2011

Dear Parents/Guardians:

The purpose of this letter is to inform you of an opportunity to purchase a piano or keyboard for your family. Montgomery County Public Schools (MCPS) has an agreement with Schaeffer's Piano Company, Inc., to provide MCPS with new grand and upright pianos to be used in schools. Schaeffer's Piano Co., Inc., located in Rockville, Maryland, is the area's oldest piano store. This agreement also provides MCPS families and staff an opportunity to purchase these and other pianos for considerably reduced prices at an annual piano sales event.

This year's liquidation sales event will take place on November 18, 19, and 20, 2011, at 105 North Stonestreet Avenue, Rockville, Maryland, 20850. Friday and Saturday, November 18 and 19, 2011, are by appointment only to provide an opportunity for you to purchase these pianos before they are offered for sale to the public on Sunday, November 20, 2011. All pianos will carry a 15-year transferable warranty. Each piano will come with a bench and one free in-house tuning.

For additional information, you may visit the Schaeffer's Piano Company, Inc., website at www.schaefferspiano.com. To make an appointment for November 18 or 19, call the Schaeffer's Piano Company appointment desk at 301-424-1147. No appointment is required for Sunday, November 20 when the sale will be open to the general public from 10:00 a.m. to 6:00 p.m.

Friday, November 18, 2011

Saturday, November 19, 2011

Sunday, November 20, 2011

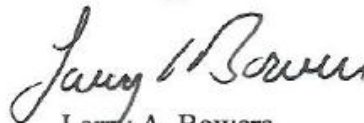
Call 301-424-1147 to schedule an appointment

Call 301-424-1147 to schedule an appointment

Open to the General Public, 10:00 a.m.-6:00 p.m.

We are grateful to be working with Schaeffer's Piano Company, Inc., to support our school music programs and help MCPS keep new and well-maintained instruments in our schools each year. If you have any questions, please contact Schaeffer's Piano Company, Inc., at 301-424-1144.

Sincerely,



Larry A. Bowers

Chief Operating Officer



Some of the activities scheduled for this year are Books and Boxing, Babysitting Club, Jewelry Making, Zumba Class, Scrapbooking, Photo Club and much more. Keep checking the *Back Pocket* for upcoming classes. It is our goal to provide activities to meet the desires of all students. If you have any suggestions for new programs, please contact Mrs. Crutchfield at Winessa_R_Crutchfield@mcpsmd.org.

RecExtra needs your donations: Wrapping paper, beads and old jewelry, fabric and textbook supplies. Please drop all donations in the RecExtra box in the front office. Thank you!!

PLEASE JOIN US FOR A NIGHT OF FUN TO CELEBRATE MONOCACY'S 50TH ANNIVERSARY



Catering by
Geppetto's

Casino games
Blackjack –
Craps –
Roulette

PLUS
Silent Auction

PLUS
Live Auction,
including one-of-
a-kind art pieces

PLUS
\$50,000 in chips
with additional
available for
purchase

For one fun evening, take
a gamble,
enjoy great food, mingle
with friends and enjoy

Whether you're playing for
the first time or a master
at the tables you'll enjoy a
great time while
supporting Monocacy.

PTA CASINO NIGHT & AUCTION

Friday November 18, 2011
7:30 pm – 10:00pm

Potomac Hunt Club
21315 Peach Tree Road

Tickets: \$75 per couple or \$40
per person

Includes glass of wine, beer or
soda with additional drinks
available for \$4 each

For tickets, contact Dawn Albert at
DisneyDawnTours@aol.com or
Dreama Hemingway at
ddmoney001@yahoo.com



JPMS Media | Center News

Research Projects

The first quarter has been a busy one. Sixth grade reading classes visited the media center for orientation. They learned about policies and procedures, the organization of the Media Center and the Dewey Decimal Classification system. Spanish students visited to create family trees using Inspiration software and to research Spanish speaking countries using Glogster to organize their information. Seventh grade science classes learned about hydroponics and sixth grade science classes learned about auto bumper design. An 8th grade health class used Photo Story to create Public Service Announcements against drug use. Sixth grade English classes researched leaders and created Power Point Presentations. Eighth grade English classes researched issues raised in the book, The Pearl, using many resources including primary source documents.

Black-Eyed Susan Reading Program



This week students in all grade levels learned about the Black-Eyed Susan reading Program and the nominated books. This award is special because the winner is chosen by students. Check Ed-line for all the details

Media Center Volunteers

Many thanks to all who have volunteered to help in the Media Center. We will be contacting you soon to arrange for training.



Saturday, December 3, 2011, 8:30 AM - 1:00 PM

activity is still great for 6th and 7th graders. For more information, visit

[http://www.shadygrove.umd.edu/jets?utm_source=The+Universities+at+Shady+Grove+List&utm_campaign=575da4a72e-JETS Club Newsletter6 30 2011&utm_medium=email](http://www.shadygrove.umd.edu/jets?utm_source=The+Universities+at+Shady+Grove+List&utm_campaign=575da4a72e-JETS+Club+Newsletter6+30+2011&utm_medium=email)

Journeys in Engineering, Technology and Science (JETS) is sponsored by the Universities at Shady Grove in Rockville. JETS Day is open to all middle school students, but again this year it is scheduled for the same day as magnet testing.

Whether or not your 8th grader chooses to attend, the



Announcing –

Yearbooks

Yearbooks can be pre-ordered through Jostens only. If you do not pre-order a yearbook, you are not guaranteed a yearbook. You can go to www.jostens.com today to pre-order your yearbook. If you have any questions, please contact Kelly Aulls at Kelly_M_Aulls@mcpsmd.org.

Drama Club

The Drama Production in December is in need of costumes and props. If anyone has a lab coat or jacket, stethoscope, and surgical masks for the character of Dr. Frankenstein please contact Mrs. Turner at dturner322@aol.com Any creative ideas are appreciated. We also need prom/bridesmaids dresses. Thanks in advance.

MC Adventures

Montgomery College Workforce Development & Continuing Education Youth Programs invites students to register NOW for a one-day enrichment program for students in grades 4 - 6, on Saturday, November 19, 2011 from 9:00 a.m. to 2:50 p.m. on the Takoma Park/Silver Spring campus of Montgomery College.

Students will have an opportunity to select three workshops to participate in during the day. Workshops cover a variety of topics, including storytelling, art, robotics, chess, technology, and physics.

Also, a special optional two-hour adult workshop is available on bullying, called, "Beating the Bullies." Don't miss this special workshop on such a "burning" topic.

Workshops fill quickly, so register right away! For additional information, contact us at 240-567-7264 or 240-567-7917 or access our website at www.montgomerycollege.edu/youth

PHS NEWS

Go Falcons!



PHS Fall Production

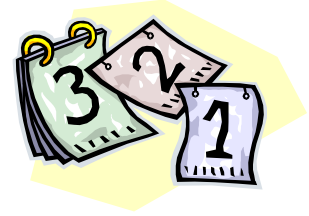
The fall production of the *Midnight Players*, directed by Ms. Gail Howard, premieres Thursday, November 17, 2011! "The Madwoman of Chailiot," a French farce by acclaimed playwright Jean Giraudoux will be performed Thursday, November 17th at 7:00 p.m., Friday, November 18th at 7:30 p.m. and Saturday, November 19th at 2:00 and 7:00 p.m. Many of our JPMS alums will be part of the cast and crew.

Coming Next Month: Financial Aid Night, December 7 @ 7:00 p.m.

Winter Concert, December 15 @ 7:00 p.m.

PHS Talent Show, December 22 @ 7:00 p.m.

Save the Date!



Important events you won't want to miss!

November 6	Change your clocks – time to fall back one hour as Daylight Savings Time ends
November 10 & 11	Early Release Days (Students dismissed at 11:50 a.m.)
November 10	Report Card Distribution
November 11	Coffee with the Principal (9:00-10:00 a.m.)
November 14	Blue Monday – wear blue to support a positive school environment
November 15	JPMS Math Night (7:00 p.m.)
November 23	Early Release Day (dismissed at 11:50 a.m.) Honor Roll Celebrations: Grade 8 – 8:10 am; Grade 7 – 9:15 am; Grade 6 – 10:20 am
November 24 & 25	Holiday – Thanksgiving (Schools closed)

Come for Coffee on Veterans' Day



**It's a holiday for federal workers
and an early release day for our kids,
so Friday, November 11 might be a day on which you
can drop in at school for a chat.**

**Coffee with the Principal will be from
9:00 – 10:00 AM in the main office conference
room.**

Hope you can make it!

Call John Poole!

Main Office 301-972-7979
Counseling 301-972-7980
Cafeteria 301-407-1037
Health Room 301-407-1029



And Ask for...

Principal - Mrs. Boucher	Assistant Principal - Ms. Lemon
Technology & Arts IRT & Grade Level Coordinator	- Mr. Grotenhuis
English IRT	- Mrs. Lindsay
Social Studies IRT	- Ms. Nachlas
Math IRT	- Mr. McKay
Science IRT	- Mrs. Callaghan
Counseling - (Ms. Kitts, Secretary)	Mrs. Arnold - Mrs. Hardy

JPMS
Timberwolves
live with
Purpose
Respect
Integrity
Dedication
Effort

Our Vision:

The Timberwolf community experiences joy in learning, celebrates excellence, and values positive relationships.

Our Mission:

At John Poole Middle School, our mission is to:

- promote joy in learning through motivation and engagement**
- celebrate excellence by acknowledging achievement foster a shared responsibility for academic and social success**
- value positive relationships, thereby promoting a respectful and supportive learning environment**

