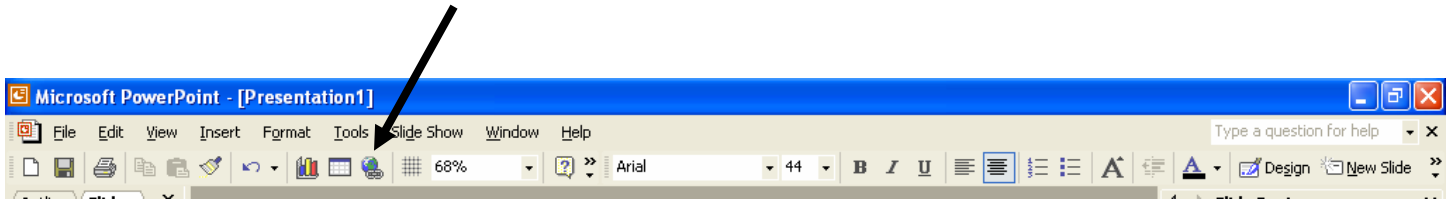


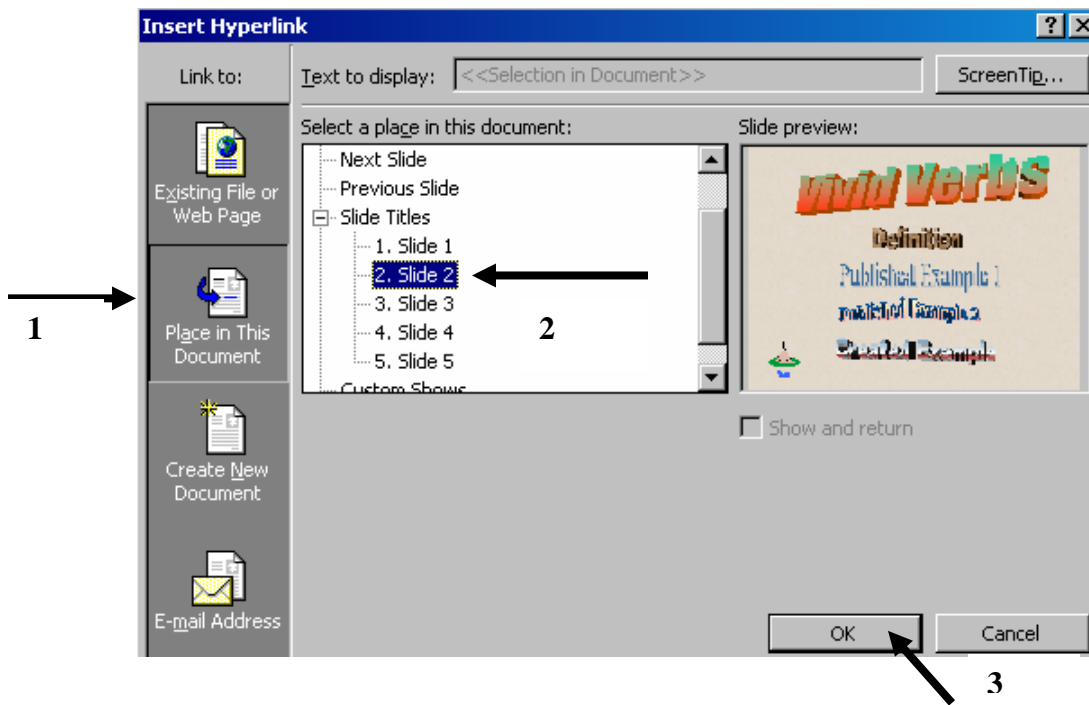
# Linking in PowerPoint

To link pages:

1. Click on the item you want to link and then click on the **hyperlink icon**. If the icon is not at the top of your screen, go to **Insert** and then move down to **Hyperlink**.



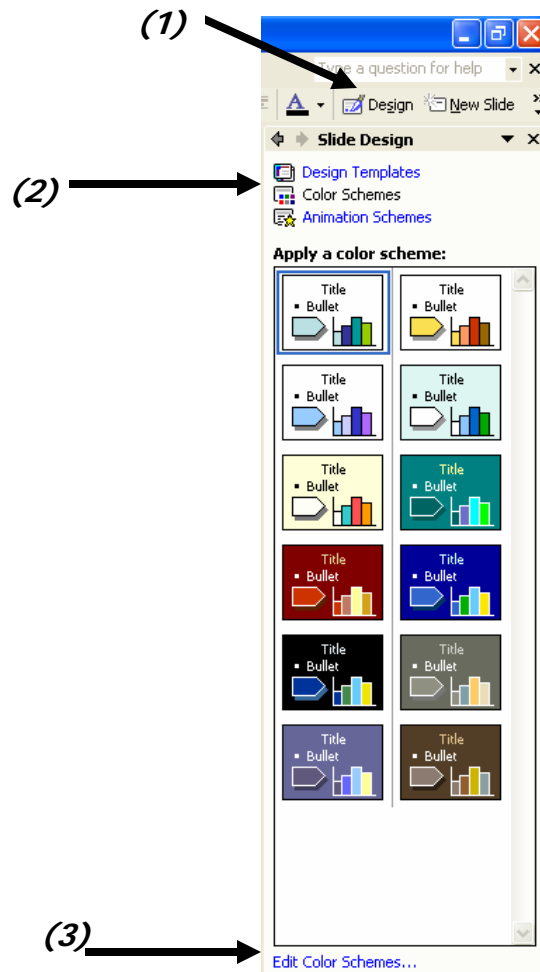
2. When the screen comes up, click on **Place in This Document (1)**. Then click on the slide you want the item to be linked to **(2)**. Finally, click **OK (3)**.



3. When you have successfully linked an item, test it in your slide show to see if it works by clicking on the icon at the bottom of your screen.



4. To change the color of your link, click on **Design (1)**, then **Color Schemes (2)**. Finally, Move down to the bottom of the bar and click on **Edit Color Schemes (3)**.



5. Click on **Custom (1)**, then click on **Accent and hyperlink (2)**. Change the color by clicking on the **Change Color button (3)** and selecting the choice that goes with your background. Finally, click **Apply (4)**.

