

Great Seneca Creek Mission Statement

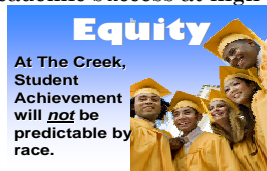
"The students, staff, parents, and community of Great Seneca Creek Elementary School will work collaboratively to provide a safe, respectful, energetic, and rigorous learning environment for all. We will develop successful, life-long learners ready for the 21st century through the integration of culturally responsive instruction, technology, and environmental conservation."

1st LEED Certified School in the State of Maryland – Leadership in Energy and Environmental Design



An Exceptional Staff

- ★ Staff members are committed to ensuring that students from all racial and ethnic backgrounds achieve academic success at high levels.



- ★ Staff members meet as grade level teams to collaboratively plan for student learning. Teachers design rigorous and motivating lessons that align with the needs that all learners' seek in the classroom:

Power, Purpose, Affirmation, Contribution and Challenge

- ★ Our full-time School Counselor coordinates the school-wide Open Ears Mentoring Program, the Walk for the Homeless and other positive programs to support character development, as well as the social and emotional growth of all students.

- ★ Teachers communicate the following Key Messages:

1. *This is important.*
2. *You can do it.*
3. *We're not going to give up on you.*
4. *Effective effort leads to student achievement.*

A Focus on Relevance and Relationships

- ★ GRRREAT Character Program – emphasis placed on seven character traits important to student achievement: **G**oal setting, **R**espect, **R**esponsibility, **R**elationships, **S**elf-Esteem, **A**ttitude, and **T**eamwork.

- ★ Student Involvement

- School Safety Patrols
- Green Team / Student Ambassadors
- Girls On The Run Foundation
- Jump Rope For Heart Association
- The Recyclers and Energy Management (SERT)Teams
- Student Government Association / Peer Mentoring
- Morning Announcements / Meteorologists
- Ruth Rales Reading Tutors
- Kindergarten / Gr.1 Reading Buddies

- ★ After School Activities – an extensive list of “The Clubs” to foster learning opportunities for students (Sports, Drama, Technology, etc.)

School Improvement Plan

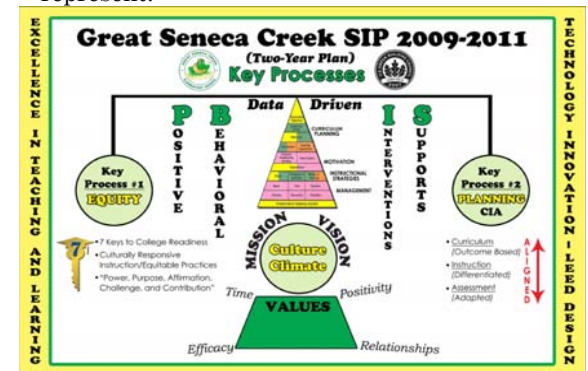
- Implementation of culturally responsive instruction with focus on race and equity
- Plan using the MCPS 4 Critical Planning questions in order to implement and monitor rigorous and differentiated instruction.
- Implement strategic data monitoring processes to support instructional decision making.

An Involved Community

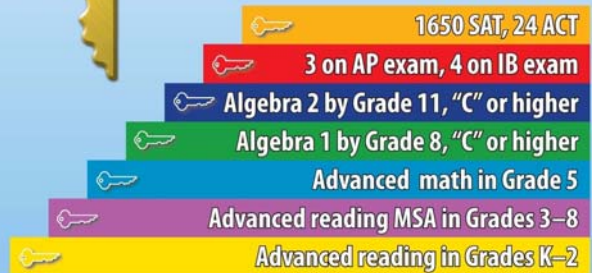
- ★ The PTA sponsors many activities designed to foster a sense of community, supporting our focus on learning. Sponsored events include: Parent Content Academic Academies, International Night, Bullfrog Beach Bash, Cultural Arts Programs, Family Fun Nights, Talent Shows, and Community Picnics.

- ★ The Parent Advisory Committee (PAC)

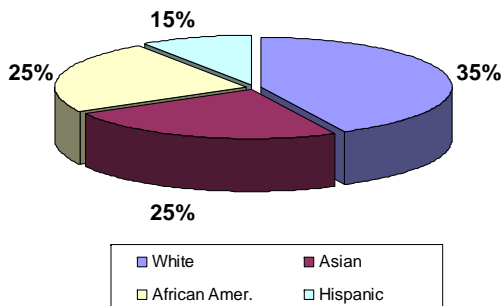
Our PAC is a group consisting of parents from neighborhood communities involved with GSCES. The committee meets regularly with school leaders to provide input and insight to the organization's operations. In addition, the committee provides critical input on the development of the School Improvement Plan, ensuring that a collaborative effort of key stakeholders is well represented. Members serve as a voice for the neighborhoods they represent.



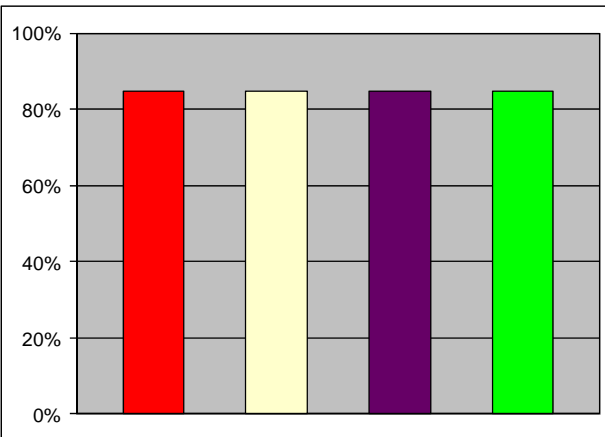
7 SEVEN KEYS TO COLLEGE READINESS



**GSCES
Demographic Breakdown
Enrolled: 740**



Eliminating the Achievement Gap



★GSCES Bullfrogs★

Student Acceleration and Support

Individual student progress is strategically monitored. Differentiated instructional opportunities exist to support high levels of student achievement through intervention and acceleration:

- School Improvement Plan focused on Race and Equity, Rigorous Instruction, and Strategic Data Monitoring
- Access to acceleration in all grades (11 advanced math classes)
- Guided-Reading instruction K-5
- William & Mary Reading / Jr. Great Books / Jacobs Ladder Instruction
- Writer's Workshop and 6+1 Traits of Writing Instruction
- Hands-On Science / Foreign Language Clubs
- Academic Intervention Plans
- Soar to Success/Early Success/Corrective Reading/Ruth Rales Reading Programs
- Special Education Resource
- The Home School Inclusion Model
- Speech/Language Program
- Emotional Disabilities Unit
- English Language Learners (ESOL)

School/Staff Highlights

- 6th largest MCPS elementary school
- Technology Focus School - Wireless Campus
- Award-Nominated Web Page
- Instructional Leadership Team
- Artist-in-Residency Program
- High School Internship Coordination
- Master Schedule designed for Team Planning
- Nationally Board Certified Staff (5 Total)
- Over 17,000 Volunteer hours logged annually
- Annual Talent Show & Lunchtime Talent

Gregory S. Edmundson, Principal
13010 Dairymaid Drive
Germantown, Maryland 20874
Phone: 301-353-8500
Fax: 301-515-3044

www.GreatSenecaCreekES.org



Great Seneca Creek Elementary School

*Excellence in Teaching & Learning;
Technology Innovation /
LEED Design*

