



February 4

Fourth Grade Newsletter

Mrs. DeNisco, Ms. McCord, Mrs. Derr, Ms. Powery, Mrs. Immerman

Bethesda Elementary

Issue 5

Curriculum News

What Are We Learning This Quarter?

Math 4

Unit 3 Assessments will take place the week of February 21. The focus will be on decimals, fractions and probability.

Math 5

- Converting between fractions, decimals, and percents
- Identifying equivalent fractions
- Simplifying fractions
- Understanding mixed numbers
- Converting between improper fractions and mixed numbers
- Finding percent of a number

Reading

William and Mary

- Reading biographies of famous Americans and autobiographies of writers.
- Reflecting on the concept of change in literature (short stories, poems, biographies, and autobiographies) and in students' own lives.

Writing

Writing an Argument

- Reviewing articles
- Taking a side
- Identifying pros and cons
- Specifying detailed reasons

Science

Environmental

- Impact of the environment on human activities
- Scientific process
- Effects of pollution on the Chesapeake Bay

Social Studies

U.S. Migration Today

- Writing a personal response to an article about immigrants to the Washington, DC area.
- Building a timeline of the four "waves" of immigration to the United States.
- Discovering where most immigrants came from during each time period.



Children have been working hard on their Science Fair projects! Feedback is being given and revisions are being made to ensure success for all. Thank you for all of your support.

Please remember that students should not go ahead to the next steps unless they have been initialed and approved to move on. In addition, all revisions from this point on should be typed and dated. Keep all drafts and revisions attached to the science packet. If students have questions, they can see Ms. McCord before or after school or they can send an email. Please encourage students to send their own emails because we want students to understand the process.

Reminders:

- Please make sure your child is turning in his/her packet for feedback! Make revisions as quickly as possible.
- Packets can also be turned in **BEFORE** the actual due dates.
- Watch for backboards to go on sale at the school store this month!

Valentine Party

Valentine parties will take place on Tuesday, February 14 at 1:45. If exchanging cards, students should bring in Valentines for the entire class. Check with your child's homeroom teacher for the number and names of students.

If you are available to assist with the party, please contact the lead homeroom parent.



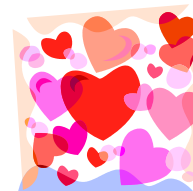
Inside this issue:

Curriculum News

Important Dates to Remember

Science Fair

Valentine Party



Reminder! Electronic readers such as Nooks or Kindles are welcome at school, but the school cannot be responsible for lost or damaged the devices.

Take Home Reading

Why is reading **at home** and **at school** so important?

Studies have shown that:

- 10 to 15 minutes of daily reading shows a 20 percent increase on standardized tests.
- Children who read 17 minutes a day are exposed to 1,168,000 words per year.
- Children who have 500 or more books in the home complete on average 3.2 more years of schooling than children in bookless homes. Fortunately, for those of us with less room, even just 20 books makes a difference!

Important Dates

- February 6 & February 13- Mock MSA
- February 14 - Valentine Party @ 1:45
- February 20 - No School - President's Day



