



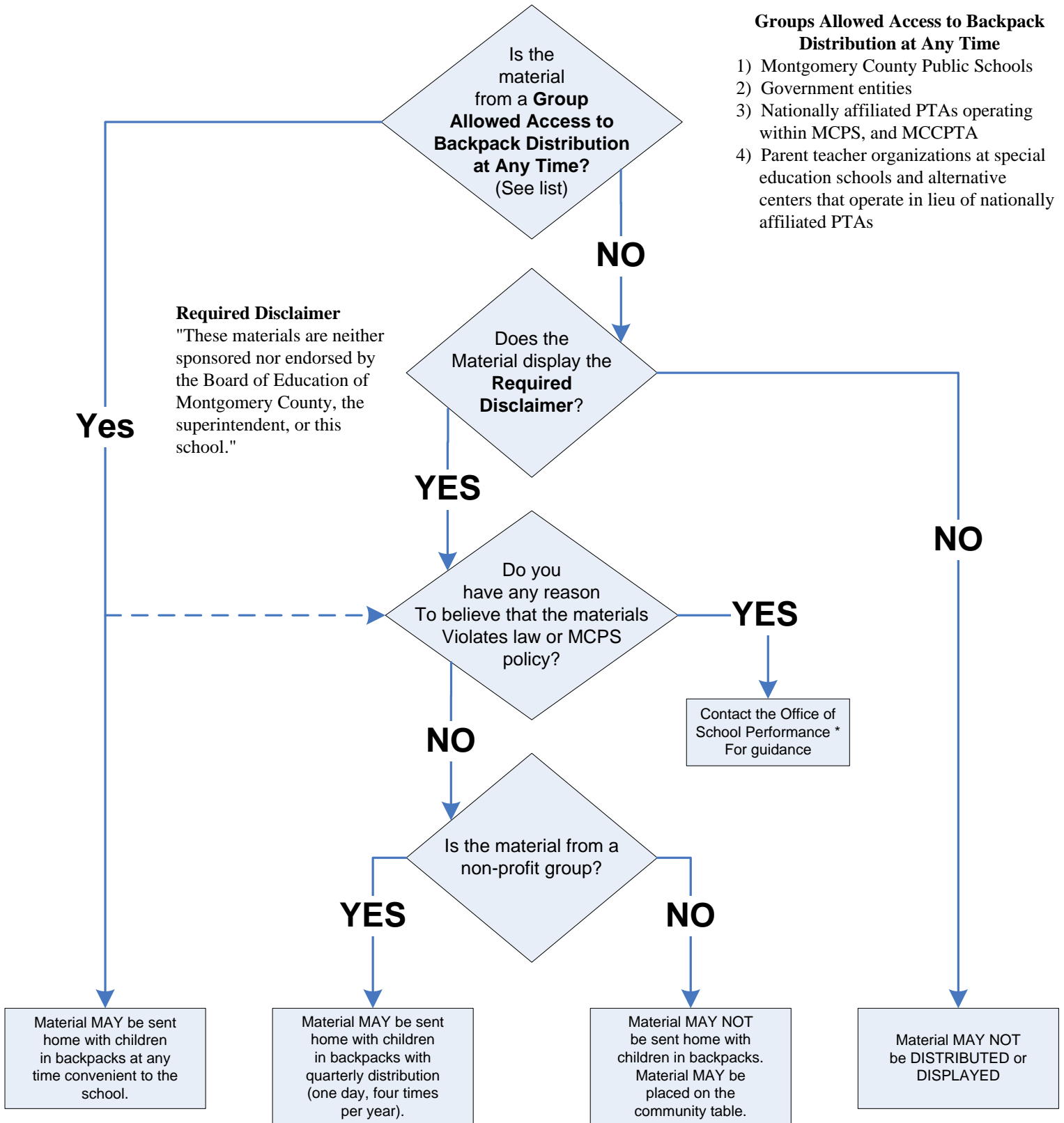
Rockville, Maryland

# Policy CNA-RA Decision Tree

## Display and Distribution of Informational Materials and Announcements

### Groups Allowed Access to Backpack Distribution at Any Time

- 1) Montgomery County Public Schools
- 2) Government entities
- 3) Nationally affiliated PTAs operating within MCPS, and MCCPTA
- 4) Parent teacher organizations at special education schools and alternative centers that operate in lieu of nationally affiliated PTAs



\*If you have any questions, please contact the Office of School Performance.  
Phone: 301-315-7366 • FAX: 301-315-7380