

# Unity Area Boundary Study Boundary Advisory Committee Meeting #1



December 22, 2016

[www.montgomeryschoolsmd.org/departments/planning/unityarea.aspx](http://www.montgomeryschoolsmd.org/departments/planning/unityarea.aspx)



MONTGOMERY COUNTY PUBLIC SCHOOLS



# Agenda

- Introduced members and received ground rules.
- Reviewed committee packet and background materials.
- Reviewed a map of the geographic areas in the scope of the study.
- Developed criteria for boundary option creation and evaluation.
- Reviewed the boundary option and asked clarifying questions so that each member can share options with their communities
- Discussed next steps and filled out feedback forms.
- Addressed questions and comments from observers.



---

# Introductions & Ground Rules



MONTGOMERY COUNTY PUBLIC SCHOOLS

# Ground Rules

1. Be true to the charge
2. Share openly
3. Participate enthusiastically
4. Give and receive constructive feedback
5. Appreciate everyone's ideas
6. Suspend judgment
7. Limit discussions to the topic
8. Do homework and be prepared
9. Abide by decisions made by the facilitator
10. Cell phones—turn off, vibrate, or answer on first ring
11. Start and end meetings on time



# Committee Schedule

Meeting	Date	Topic
#1	December 22, 2016	Committee charge, overview of process, timeline, review of zones to build options, development of criteria to evaluate option. Review of community requested option and projected condition with no change.
--	Various	<i>School PTA and other meetings to share options and gather feedback</i>
#2	January 11, 2017	Feedback on option. Committee members submit option evaluations and schools submit PTA position papers (if needed).
--	January 18, 2017	Community-wide meeting to present option and projected conditions with no change and get feedback.
--	January 24, 2017	Backup meeting date



# Superintendent/BOE Schedule

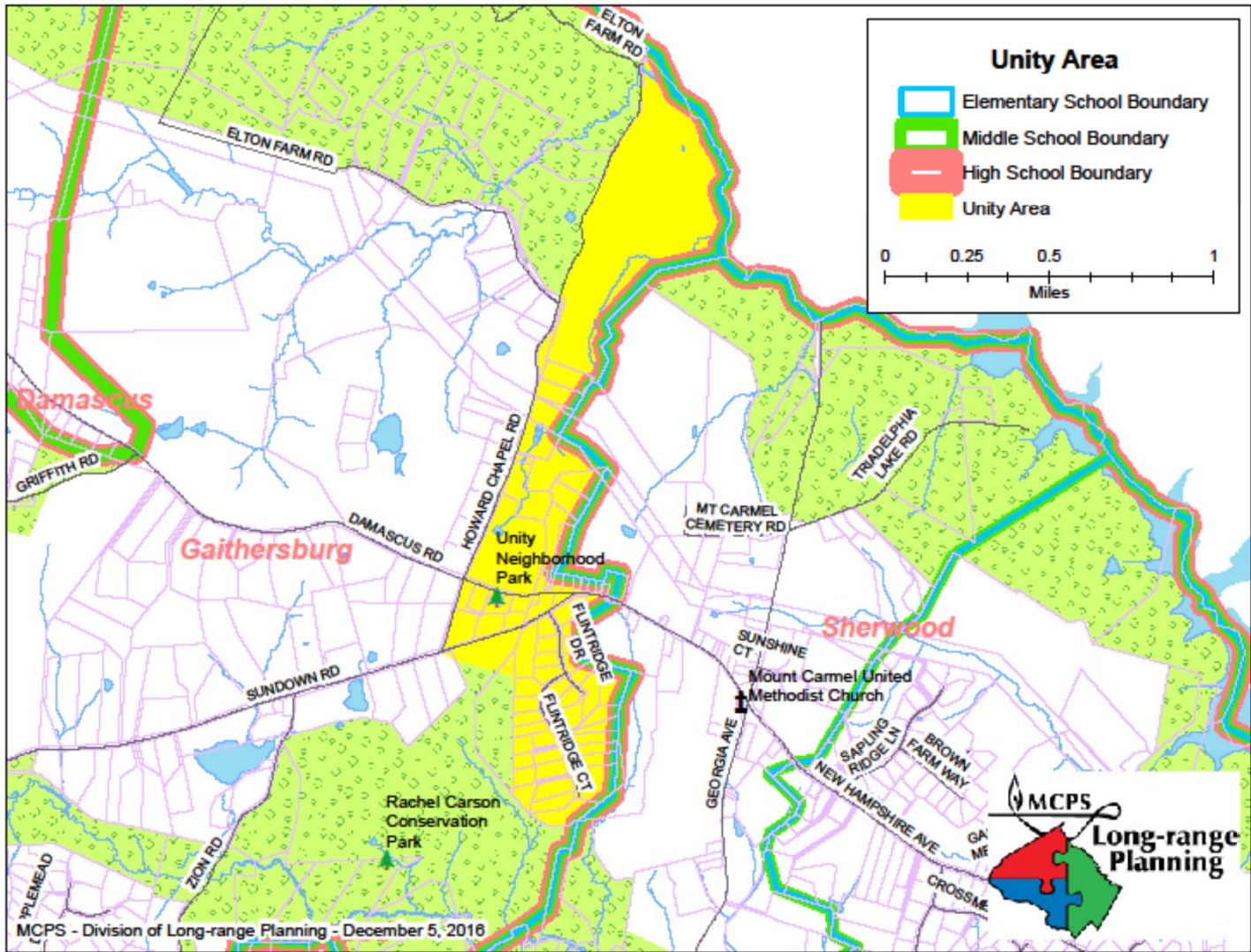
Date	Activity
February 2017	Superintendent's recommendation to the Board of Education
February 27, 2017	Board of Education boundary work session
March 9, 2017	Board of Education public hearing
March 30, 2017	Board of Education Action



# Committee Charge

- BOE requested that superintendent solicit community input to obtain viewpoints
- Possibility to reassign the Unity area from Gaithersburg Cluster to Sherwood Cluster
- Scope is limited to the specific area identified by the Board of Education







# Committee Membership

Two parent representatives from each affected school PTA

- Laytonsville Elementary
- Gaithersburg Middle
- Gaithersburg High
- Greenwood Elementary
- Rosa Parks Middle
- Sherwood High



# Committee Process

- Identify important community issues – develop committee criteria
- Representatives evaluate boundary option using committee criteria
- PTA and other organizations represented on the boundary committee may submit position papers for committee report
- Feedback forms from community meetings



# Role of Committee Members

- Generate committee criteria that will be used to evaluate options
- Inform the school communities they represent about the committee work and share community feedback with the committee
- No recommendations or vote will be taken by committee members

# Role of MCPS Staff

- Facilitate committee meetings
- Develop boundary option
- Provide information requested by the committee

# Committee Report

- Description of committee process and participants
- Explanation of the committee criteria
- Discussion of implementation issues
- Individual member evaluation of options
- Attachments including position papers (optional)

# Outline of Report

## Narrative Section

- Background
- Scope of Boundary Study
- Committee Representatives
- Meetings
- Committee Criteria
- Implementation Issues (if any)

## Appendices

- Committee Roster
- Committee Charge
- Boundary Options
- Option Evaluations
- Position Papers (if any)

# Evaluation Form

**Unity Area Boundary Advisory Committee**  
**Evaluation of Boundary Options**  
**January 2017**

<i>Representative Name:</i>	Meets Criterion	Does not Meet Criterion	<i>School Name:</i>
<b>Evaluation Criteria</b>			<b>Narrative Evaluation Statement</b>
	YES		



---

# Criteria Development





# Criteria

Criterion:

*A rule or principle or evaluating something*

The committee will develop criteria that incorporates Board of Education policy guidelines, and adds any other considerations deemed important.



# Board of Education Policy FAA

- *FAA—Long-range Educational Facilities Planning*, lists four main factors to consider in developing school boundaries:
  - Demographic characteristics of student population
  - Geographic proximity of communities to schools
  - Stability of school assignments over time
  - Facility utilization

# Committee Criteria

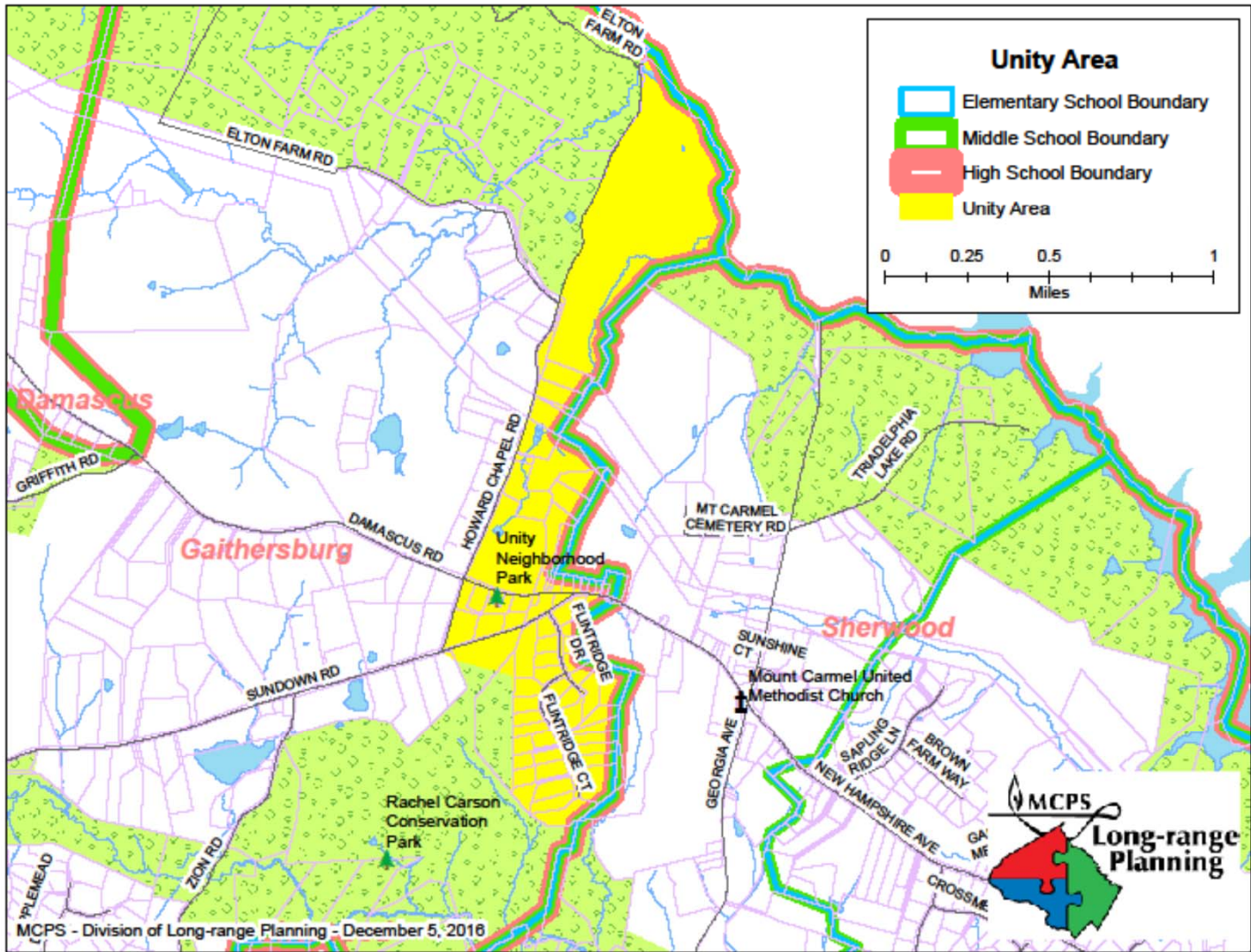
- Identification with community; community Involvement
- Proximity to schools; distance of families to schools
- Commute time on bus; after school activities and time
- Is the action precedent-setting
- Diversity, racial and ethnic composition of existing a
- Incoming students, variance
- Socioeconomic composition and variance
- Utilization impact

- Diversity- promote diversity
- Parent involvement
- What community do you feel a part of
- Interpersonal relationships, friendships for students
- Historical perspective; stability of assignment over time
- Activity bus as it relates to student participation
- Class size/maintain class size ratios



# Enrollment and Proposed Option





# Laytonsville ES Enrollment and Capacity

(Maximum # of Seats=449)

	2017-18	2018-19	2019-20	2020-21	2021-22	2022-23
<b>No Change</b>						
<b>Number of Students</b>	<b>370</b>	<b>376</b>	<b>313</b>	<b>382</b>	<b>374</b>	<b>390</b>
<i>% of Building Occupied</i>	82%	84%	70%	85%	83%	87%
Available Seats	79	73	136	67	75	59
<b>With Change</b>						
<b>Number of Students</b>	<b>360</b>	<b>366</b>	<b>303</b>	<b>372</b>	<b>364</b>	<b>380</b>
<i>% of Building Occupied</i>	80%	82%	67%	83%	81%	85%
Available Seats	89	83	146	77	85	69



# Greenwood ES Enrollment and Capacity

(Maximum # of Seats=584)

	2017-18	2018-19	2019-20	2020-21	2021-22	2022-23
<b>No Change</b>						
<b>Number of Students</b>	<b>462</b>	<b>450</b>	<b>443</b>	<b>450</b>	<b>447</b>	<b>432</b>
<i>% of Building Occupied</i>	79%	77%	76%	77%	77%	74%
Available Seats	122	134	141	134	137	152
<b>With Change</b>						
<b>Number of Students</b>	<b>472</b>	<b>460</b>	<b>453</b>	<b>460</b>	<b>457</b>	<b>442</b>
<i>% of Building Occupied</i>	81%	79%	79%	79%	78%	76%
Available Seats	112	124	131	124	127	142



# Effect on Demographics

School	% Afr. Amer.	% Asian	% Hispanic	% White	% 2 or More	% FARMS	% ESOL
<b>No Change</b>							
Laytonsville ES	15.7%	7.1%	20.9%	47.9%	8.4%	20.8%	5.2%
<b>With Change</b>							
Laytonsville ES	16.0%	7.2%	21.1%	47.5%	8.3%	21.4%	5.6%
<b>No Change</b>							
Greenwood ES	10.4%	7.8%	7.8%	66.7%	7.4%	9.1%	<5.0%
<b>With Change</b>							
Greenwood ES	10.3%	7.7%	7.9%	66.7%	7.5%	8.9%	<5.0%

# Gaithersburg MS Enrollment and Capacity (Maximum # of Seats=962)

	2017-18	2018-19	2019-20	2020-21	2021-22	2022-23
<b>No Change</b>						
<b>Number of Students</b>	<b>816</b>	<b>857</b>	<b>865</b>	<b>901</b>	<b>959</b>	<b>957</b>
<i>% of Building Occupied</i>	85%	89%	90%	94%	100%	99%
Available Seats	146	105	97	61	3	5
<b>With Change</b>						
<b>Number of Students</b>	806	847	855	891	949	947
<i>% of Building Occupied</i>	84%	88%	89%	93%	99%	98%
Available Seats	156	115	107	71	13	15



# Rosa Parks MS Enrollment and Capacity

(Maximum # of Seats=978)

	2017-18	2018-19	2019-20	2020-21	2021-22	2022-23
<b>No Change</b>						
<b>Number of Students</b>	<b>862</b>	<b>836</b>	<b>851</b>	<b>830</b>	<b>824</b>	<b>812</b>
<i>% of Building Occupied</i>	88%	85%	87%	85%	84%	83%
Available Seats	116	142	127	148	154	166
<b>With Change</b>						
<b>Number of Students</b>	872	846	861	840	834	822
<i>% of Building Occupied</i>	89%	87%	88%	86%	85%	84%
Available Seats	106	132	117	138	144	156



# Effect on Demographics

School	% Afr. Amer.	% Asian	% Hispanic	% White	% 2 or More	% FARMS	% ESOL
<b>No Change</b>							
Gaithersburg MS	23.3%	7.5%	46.3%	21.0%	<5%	44.4%	13.0%
<b>With Change</b>							
Gaithersburg MS	21.5%	7.6%	46.6%	20.4%	<5%	44.9%	13.1%
<b>No Change</b>							
Rosa Parks MS	12.0%	10.2%	11.5%	61.7%	<5%	10.9%	<5.0%
<b>With Change</b>							
Rosa Parks MS	11.8%	10.1%	11.6%	61.8%	<5%	10.0%	<5.0%



# Gaithersburg HS Enrollment and Capacity

(Maximum # of Seats=2407)

	2017-18	2018-19	2019-20	2020-21	2021-22	2022-23
<b>No Change</b>						
<b>Number of Students</b>	<b>2480</b>	<b>2496</b>	<b>2524</b>	<b>2539</b>	<b>2590</b>	<b>2736</b>
<i>% of Building Occupied</i>	103%	104%	105%	105%	108%	114%
Available Seats	-73	-89	-117	-132	-183	-329
<b>With Change</b>						
<b>Number of Students</b>	2475	2491	2519	2534	2585	2731
<i>% of Building Occupied</i>	103%	103%	105%	105%	107%	113%
Available Seats	-68	-84	-112	-127	-178	-324



# Sherwood HS Enrollment and Capacity

(Maximum # of Seats=2183)

	2017-18	2018-19	2019-20	2020-21	2021-22	2022-23
<b>No Change</b>						
<b>Number of Students</b>	<b>1933</b>	<b>1989</b>	<b>1981</b>	<b>2012</b>	<b>1984</b>	<b>1959</b>
<i>% of Building Occupied</i>	89%	91%	91%	92%	91%	90%
Available Seats	250	194	202	171	199	224
<b>With Change</b>						
<b>Number of Students</b>	1938	1994	1986	2017	1989	1964
<i>% of Building Occupied</i>	89%	91%	91%	92%	91%	90%
Available Seats	245	189	197	166	194	219

# Effect on Demographics

School	% Afr. Amer.	% Asian	% Hispanic	% White	% 2 or More	% FARMS	% ESOL
<b>No Change</b>							
Gaithersburg HS	24.8%	7.6%	49.1%	15.4%	<5.0%	41.3%	19.9%
<b>With Change</b>							
Gaithersburg HS	24.8%	7.6%	49.1%	15.2%	<5.0%	41.3%	19.9%
<b>No Change</b>							
Sherwood HS	17.1%	11.5%	18.2%	49.2%	<5.0%	5.2%	<5.0%
<b>With Change</b>							
Sherwood HS	17.1%	11.5%	18.1%	49.3%	<5.0%	5.2%	<5.0%



# Next Steps

- PTAs and organizations should hold meetings to gather input about option
- Committee members will share the input at the next meeting
- Committee members should fill out evaluation forms for next meeting
- PTAs should prepare position papers for next meeting





# Website

- All materials will be posted on the following website:

<http://www.montgomeryschoolsmd.org/departments/planning/unityarea.aspx>

