

# Gaithersburg Capacity Study

**MOSELEY**ARCHITECTS  
DESIGNING SOLUTIONS ■ BUILDING TRUST ■ ENRICHING LIVES

**Rakesh Bagai, Project Manager**

**MCPS Div. of Construction**

**Julie Morris, Facilities Planner**

**MCPS Div. of Long range Planning**

**April 28, 2015**

# Why a Capacity Study?



- Address significant space shortages at Gaithersburg Cluster elementary schools
- Compare cost of construction of additions to the cost of constructing a new elementary school
- Allow superintendent to make recommendations to address the space shortages as part of the FY 2017–2022 Capital Improvements Program (CIP) in October 2015

## **Need to know the following:**

- Which schools can we add classrooms to?
- How large can the classroom additions be?
- How much would the classroom additions cost?

**The Superintendent will be able to make recommendations to address the space shortages as part of the FY 2017–2022 Capital Improvements Program (CIP) in October 2015.**

# What will the study explore?

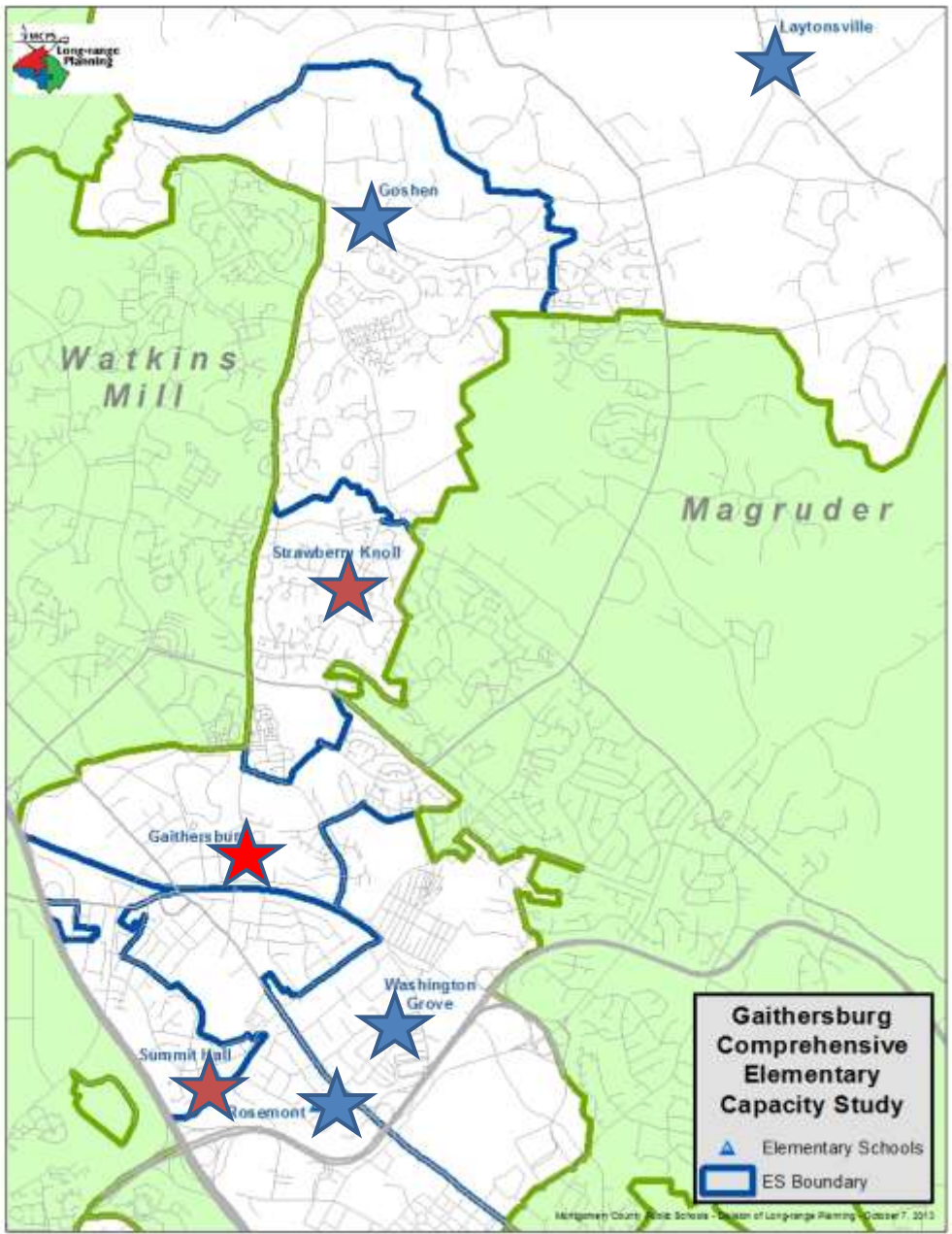
- Possible classroom additions at four of the schools in the study area
- Ability to build classroom additions at the schools that are over capacity
- Ability to build classroom additions at schools that are not over capacity but could relieve those schools that are over capacity through future boundary changes





# Capacity Study Process

- The architect prepared one or more plans for each of the four schools
- Community meetings were held at each of the four schools
- MCPS staff and architects presented the plan(s) for a classroom addition and received feedback on the plan(s)





# Study Area

-  School in this study
-  School with previous Study
-  Gaithersburg Elementary

# Enrollment projections

Gaithersburg Capacity Study Findings

Schools	Actual Enrollment 2014-15	Projected Enrollment						Capacity with Addition or Rev/Ex	Notes
		2015-16	2016-17	2017-18	2018-19	2019-20	2020-21		
Laytonsville ES	448	448	448	448	448	448	448	640 or 740	12 classroom would add 292 capacity
	428	416	408	404	396	389	383		
<i>space available</i>	20	32	40	44	52	59	65		
Gaithersburg ES	771	771	771	771	771	771	771	740 (no change)	
	795	871	915	925	918	907	868		
<i>space deficit</i>	-24	-100	-144	-154	-147	-136	-97		
Goshen ES	533	533	533	533	533	533	533	740	10 classroom would add 207 capacity
	577	602	600	608	607	594	592		
<i>space deficit</i>	-44	-69	-67	-75	-74	-61	-59		
Rosemont ES	590	590	590	590	590	590	590	640	4 classroom would add 50 capacity
	569	634	682	730	787	821	855		
<i>space deficit</i>	21	-44	-92	-140	-197	-231	-265		
Strawberry Knoll ES	453	453	453	453	453	453	453	640	9 classroom would add 187 capacity
	599	633	640	627	630	625	626		
<i>space deficit</i>	-146	-180	-187	-174	-177	-172	-173		
Summit Hall ES	443	443	443	443	443	443	443	640 or 740	Rev/Ex will add 297 capacity 8 classroom addition would add 197 capacity
	634	669	663	666	669	653	650		
<i>space deficit</i>	-191	-226	-220	-223	-226	-210	-207		
Washington Grove ES	603	603	603	603	603	603	603	740	6 classroom would add 137 capacity
	414	447	439	463	497	529	575		
<i>space available</i>	189	156	164	140	106	74	28		

# Schools studied for Classroom Additions

- Goshen ES (10 rooms)
- Laytonsville ES (8 to 12 rooms)
- Rosemont ES (4 rooms)
- Washington Grove ES (6 rooms)
- *Previously Studied:*
- *Strawberry Knoll ES (9 rooms)*
- *Summit Hall ES (8 rooms)*





# What the study will not explore?

- **No** sites for future schools will be explored in this study
- **No** boundary changes will be explored as part of this study

# Goshen Elementary School



- Current Core Capacity - 740
- Current Program Capacity - 533
- Projected Program Capacity with Addition – 740
- Current Enrollment - 578
- Projected Enrollment for 2015/2016 – 602
- Currently above Capacity
- Currently has 5 relocatables.
- Site size – 10.5 acres
- Prefab Classroom Addition – 1986
- Parking Spaces – 91 approx.
- Setbacks - Front 50', Rear 35', Side 17'

# Goshen Elementary School

Facility	#	Net SF	Gross SF
<b><u>Classrooms</u></b>			
Prekindergarten	1	1300	1300
Kindergarten	2	1300	2600
Standard	7	900	6300
<b><u>Support Rooms</u></b>			
Speech/Language Room	1	250	250
Therapy/Support Room	1	250	250
Testing Room	1	150	150
Instructional Data Assistant Office	1	150	150
Support Staff Office	1	150	150
<b><u>Counseling Area</u></b>			
Itinerant Staff Office	1	150	150
<b><u>Staff Development Area</u></b>			
Staff Development Office	1	100	100
Reading Specialist Office	1	100	100
Training/Conference Room	1	450	450
<b><u>Staff Facilities</u></b>			
Staff Lounge	1	700	700
Telephone Room	1	50	50
<b><u>Building Service Facilities</u></b>			
General Storage	1	250	250
Book Storage	1	300	300
PTA Storage	1	150	150
<b>Total</b>	<b>10</b>		<b>13400</b>

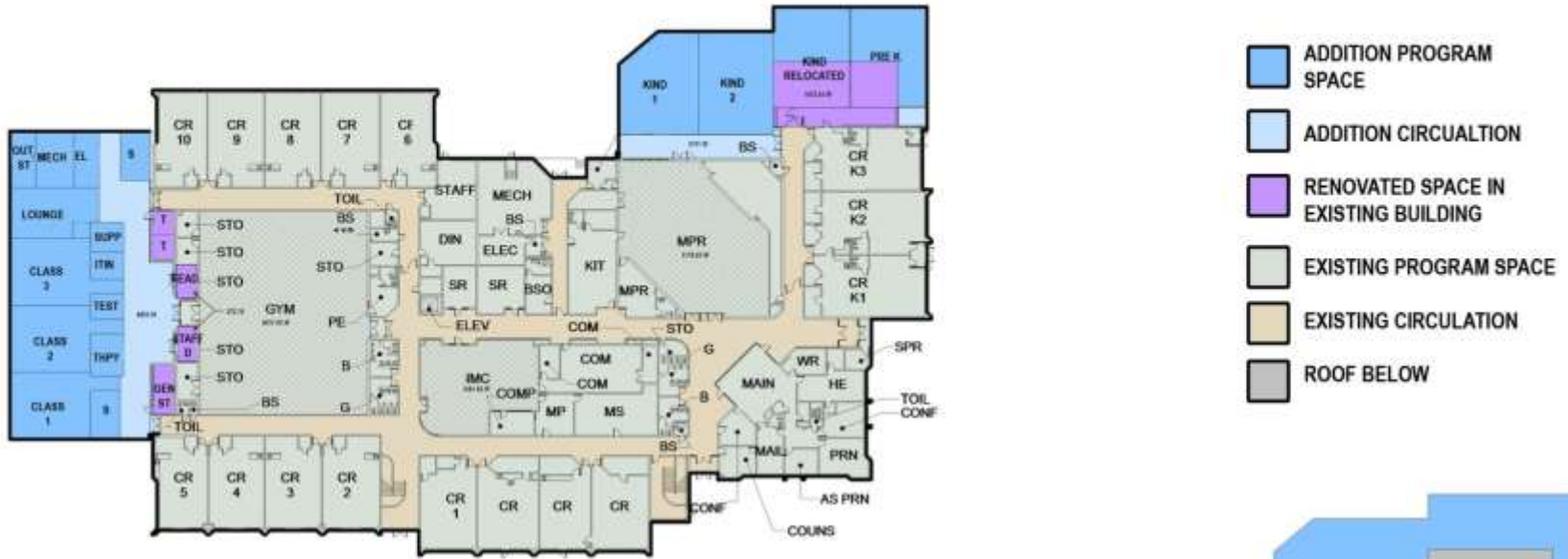
# Goshen Elementary School



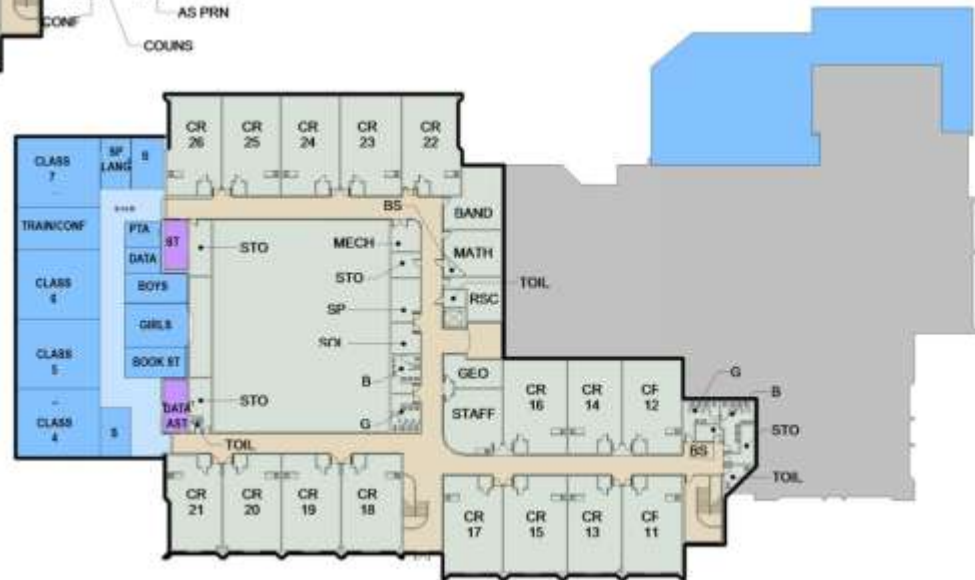
- SCHEME 1 SITE PLAN



# Goshen Elementary School

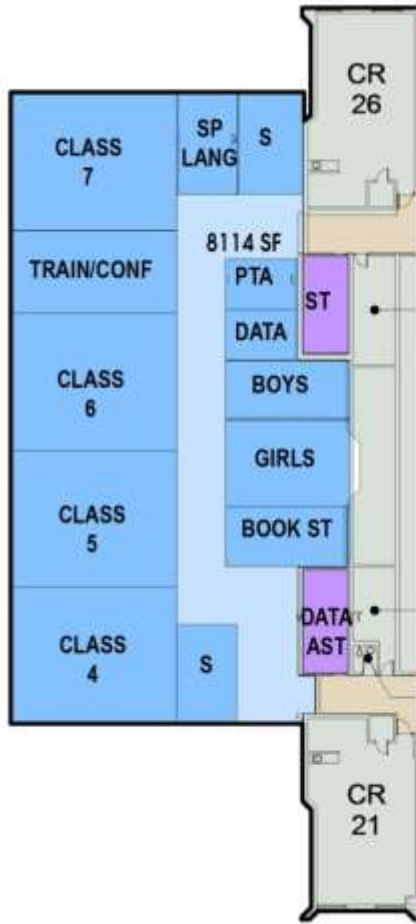


■ SCHEME 1 FIRST FLOOR PLAN

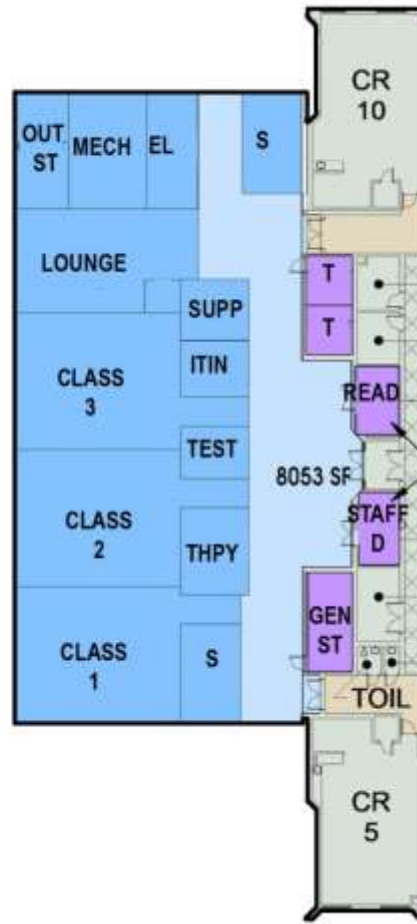


■ SCHEME 1 SECOND FLOOR PLAN

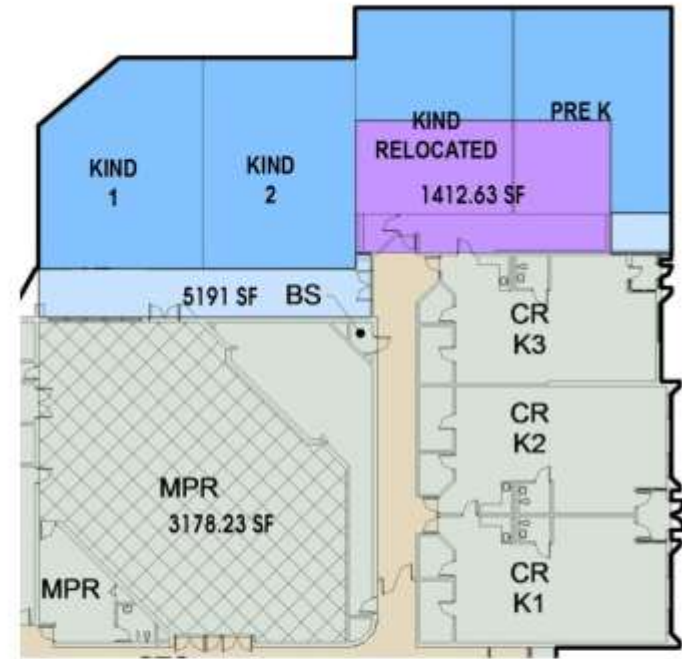
# Goshen Elementary School



▪ SECOND FLOOR



▪ FIRST FLOOR



- FIRST FLOOR KIND/PRE K ADDITION

# Goshen Elementary School



- SCHEME 2 SITE PLAN



# Goshen Elementary School



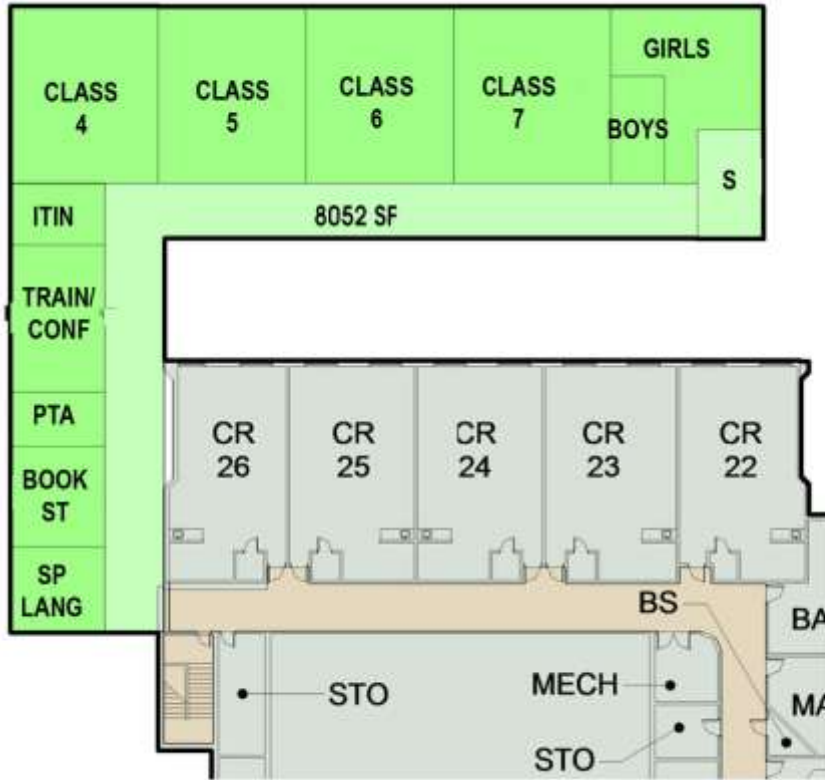
- ADDITION PROGRAM SPACE
- ADDITION CIRCULATION
- RENOVATED SPACE IN EXISTING BUILDING
- EXISTING PROGRAM SPACE
- EXISTING CIRCULATION
- ROOF BELOW

■ SCHEME 2 FIRST FLOOR PLAN

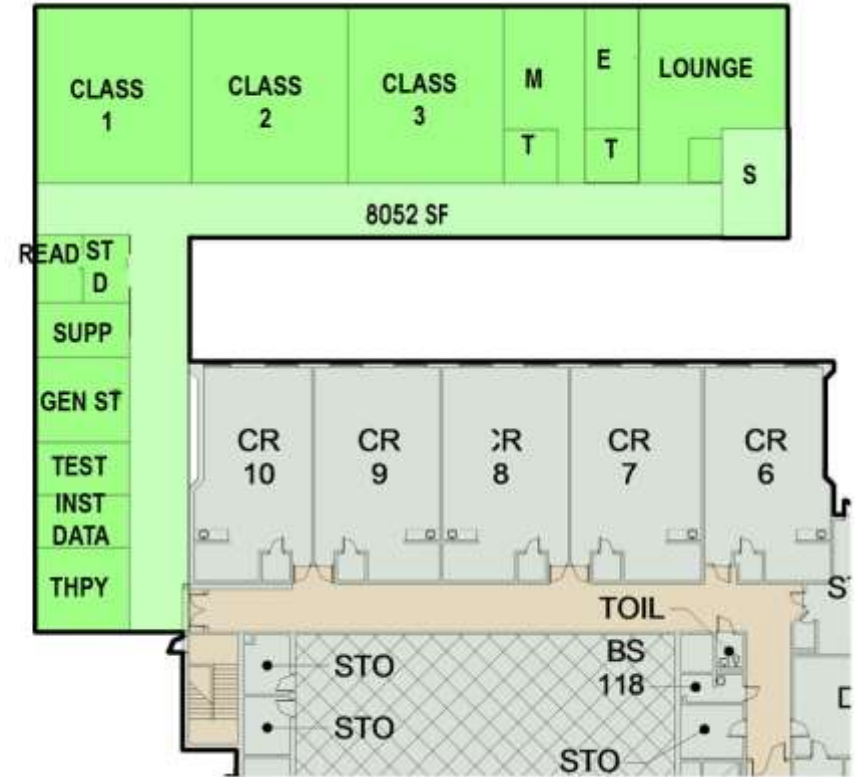
■ SCHEME 2 SECOND FLOOR PLAN



# Goshen Elementary School



▪ SCHEME 2 SECOND FLOOR PLAN



▪ SCHEME 2 FIRST FLOOR PLAN

# Goshen Elementary School

## Scheme 1



### Scheme 1 Pros

- Looping circulation paths on both first and second floors
- Compact footprint
- Good access and connections to existing two story building
- New K and Pre-K rooms adjacent to existing Kindergarten classrooms
- Natural daylight to most classrooms
- Addition is away from fields

### Scheme 1 Cons

- Requires relocation of play areas
- Current relocatables will have to be moved before construction.

## Scheme 2



### Scheme 2 Pros

- Less disturbance to play areas
- Current relocatable classrooms do not need to move during construction
- Connects to existing two story for ADA access and only one stair
- Preserves natural daylight to existing classrooms
- Kindergarten and Pre-K adjacent to existing K classrooms

### Scheme 2 Cons

- Small courtyard allows windows only to the classroom side.
- Circulation does not create a loop
- Small u shaped courtyard
- Remote location for classrooms and access from the school

# Laytonsville Elementary School



- Current Core Capacity - 640
- Current Program Capacity - 448
- Projected Program Capacity with Addition – 640 or 740
- Current Enrollment - 433
- Projected Enrollment for 2015/2016 – 416
- Currently below Capacity
- Currently has 1 relocatable
- Site size – 9.9 acres
- Parking Spaces – 135 approx.
- Set Backs (per Laytonsville zoning) - Front 35', Rear 15', Side 15'

# Laytonsville Elementary School

Facility	#	Net SF	Gross SF
The architect should also explore the feasibility of a 1300 s.f. expansion of the Multipurpose room and 4 additional classrooms (for a total of 12) to bring the capacity to 740 with a 740 core capacity.			
<b><u>Classrooms</u></b>			
Standard	5	900	4500
Special Education School Community Based	2	900	1800
SCB shared Grooming Room	1	100	100
Dual purpose Room	1	1000	1000
Instrumental Music Room	1	450	450
<b><u>Support Rooms</u></b>			
Large Instructional Support Room	1	600	600
Small Instructional Support Room	1	450	450
Testing Room	1	150	150
Staff Office	1	150	150
Itinerant Staff Office	1	150	150
<b><u>Staff Development Area</u></b>			
Staff Development Office	1	100	100
Reading Specialist Office	1	100	100
Training/Conference Room	1	450	450
<b><u>Building Service Facilities</u></b>			
General Storage	1	250	250
<b>Total</b>	<b>8</b>		<b>10250</b>

# Laytonsville Elementary School



- EXISTING SITE PLAN- WITH SEPTIC

# Laytonsville Elementary School



- EXISTING SITE PLAN – WITH PROPOSED ADDITION LOCATION

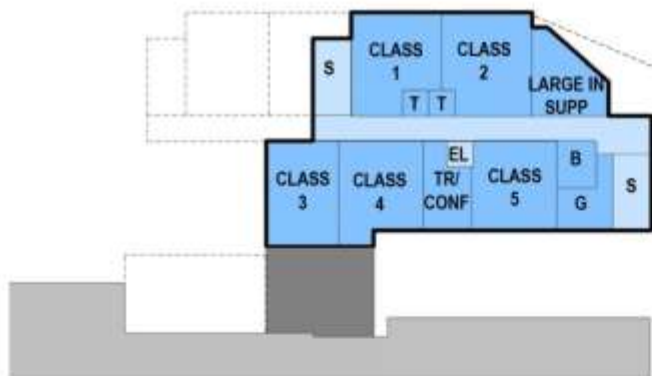
# Laytonsville Elementary School



■ 640 PROGRAM SITE PLAN



# Laytonsville Elementary School



■ 640 ADDITION SECOND FLOOR PLAN



■ 640 ADDITION FIRST FLOOR PLAN

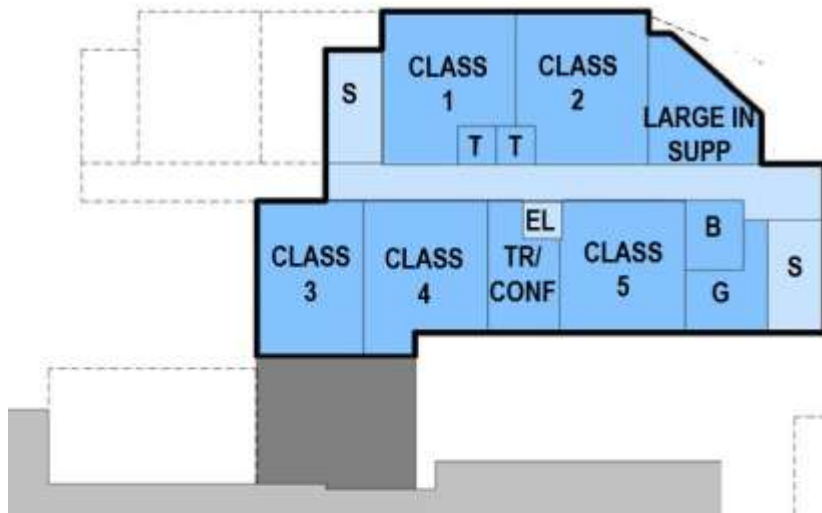
- ADDITION PROGRAM SPACE
- ADDITION CIRCULATION
- RENOVATED SPACE IN EXISTING BUILDING
- RENOVATED CIRCULATION EXISTING BUILDING
- EXISTING PROGRAM SPACE
- EXISTING CIRCULATION
- ROOF BELOW



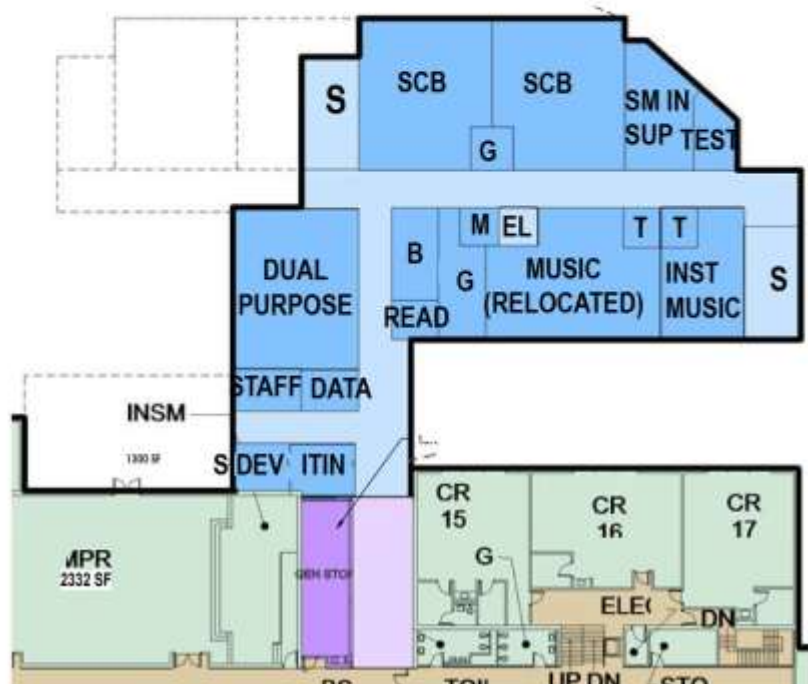
■ EX. LOWER LEVELS



# Laytonsville Elementary School



- 640 SECOND FLOOR

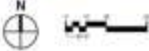


- 640 FIRST FLOOR

# Laytonsville Elementary School



740 PROGRAM SITE PLAN

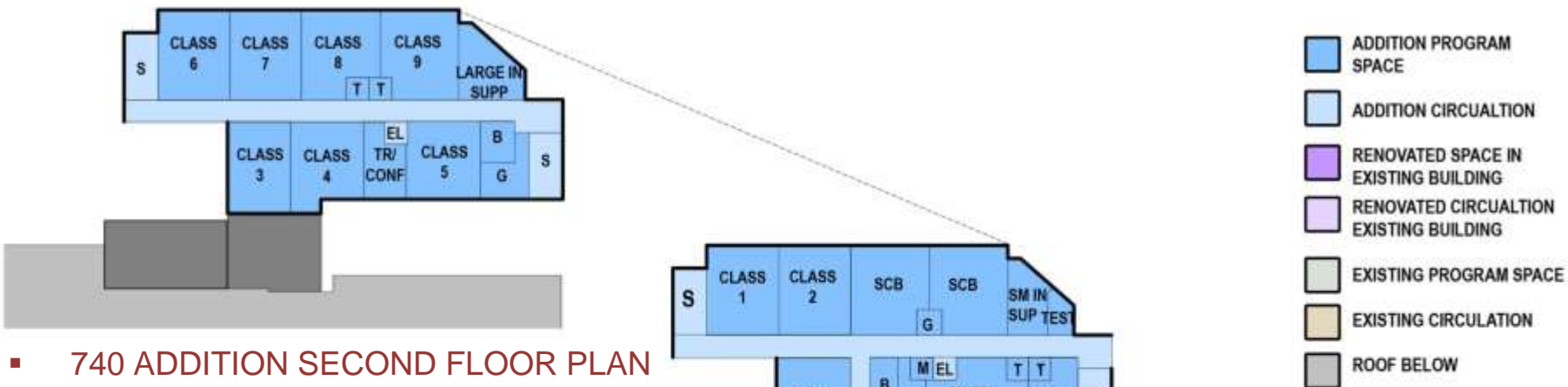


# Laytonsville Elementary School

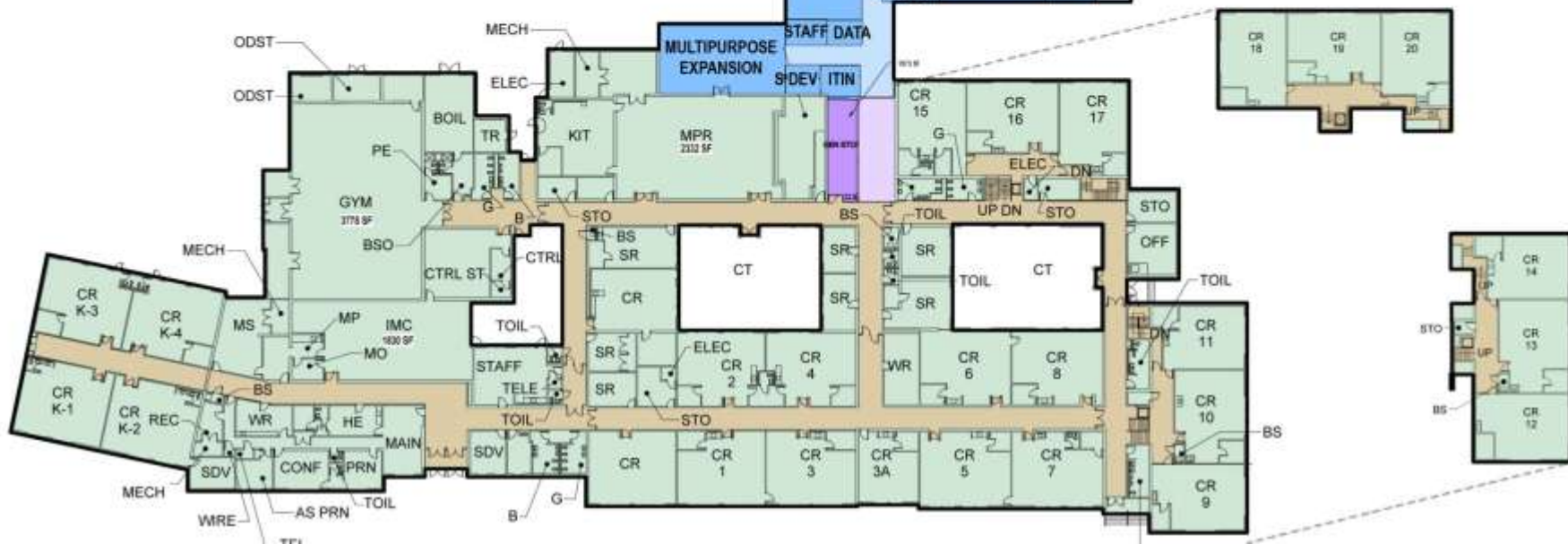


- 740 PROGRAM SITE PLAN

# Laytonsville Elementary School



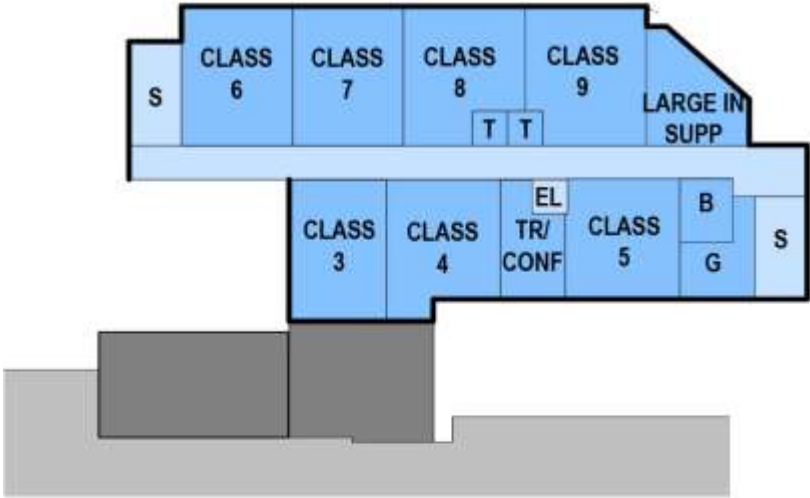
■ 740 ADDITION SECOND FLOOR PLAN



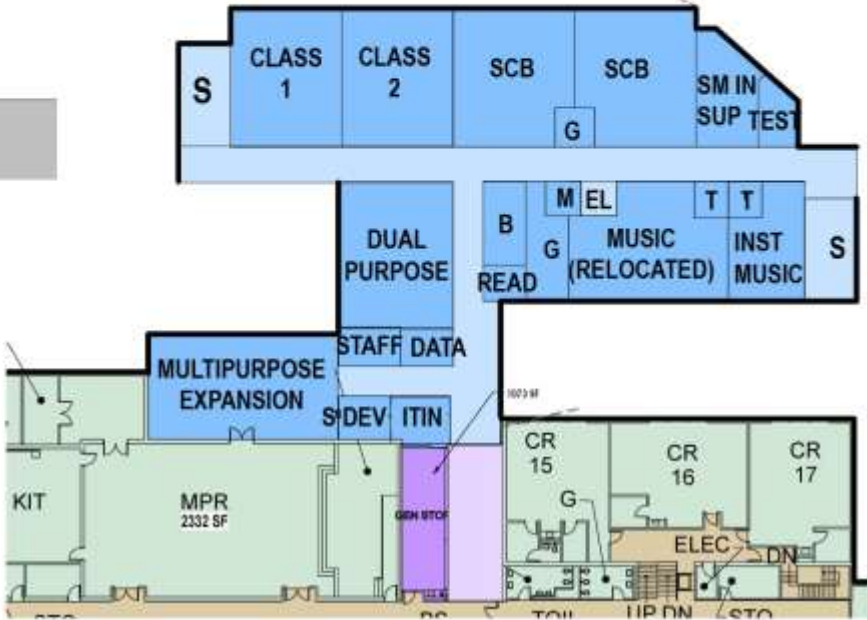
■ 740 ADDITION FIRST FLOOR PLAN

■ EX. LOWER LEVELS

# Laytonsville Elementary School



740 SECOND FLOOR



740 FIRST FLOOR

# Laytonsville Elementary School

## 640 Program Scheme



## 640 Program Pros

- Compact footprint – two stories
- Central location and good access to existing building
- Existing relocatable could stay during construction
- Natural daylight to all new and existing teaching spaces
- Addition is away from fields
- Stays away from existing septic fields
- Keeps some of the existing paved play near multipurpose and gym

## 640 Program Cons

- Requires relocation of paved play areas
- SCB classrooms far from main entry
- Circulation does not loop
- Requires new elevator and two stairs

## 740 Program Scheme



## 740 Program Pros

- Compact footprint – two stories
- Central location and good access to existing building
- Existing relocatable could stay during construction
- Natural daylight to all new and existing teaching spaces
- Addition is away from fields
- Stays away from existing septic fields.
- Enlarged multipurpose with natural light and gathering hub opportunity.
- Potential for easier dismissal with car pick-up/drop off.

## 740 Program Cons

- Requires relocation of paved play areas
- SCB classrooms far from main entry
- Circulation does not loop
- Requires new elevator and two stairs
- All play areas near multipurpose would need to be relocated.

# Rosemont Elementary School



- Current Core Capacity - 640
- Current Program Capacity - 590
- Projected Program Capacity with Addition – 640
- Current Enrollment - 564
- Projected Enrollment for 2015/2016 – 634
- Currently above Capacity
- Currently has 2 program spaces in relocatables.
- Site size – 8.9 acres
- Previous Classroom Addition
- Parking Spaces – 85 approx
- Setbacks - Front 30', Rear 30', Side 15'

# Rosemont Elementary School

Facility	#		Net SF	Gross SF
Standard	<b>3</b>		900	<b>2700</b>
Dual purpose Room	<b>1</b>		1000	<b>1000</b>
Instrumental Music Room	1		450	<b>450</b>
<b><u>Support Rooms</u></b>				
Large Instructional Support Room	1		600	<b>600</b>
Testing Room	1		150	<b>150</b>
Staff Office	1		150	<b>150</b>
Itinerant Staff Office	1		150	<b>150</b>
<b><u>Staff Development Area</u></b>				
Staff Development Office	1		100	<b>100</b>
Reading Specialist Office	1		100	<b>100</b>
Training/Conference Room	1		450	<b>450</b>
<b><u>Building Service Facilities</u></b>				
General Storage	1		250	<b>250</b>
PTA Storage	1		150	<b>150</b>
<b>Total</b>	<b>4</b>			<b>6250</b>



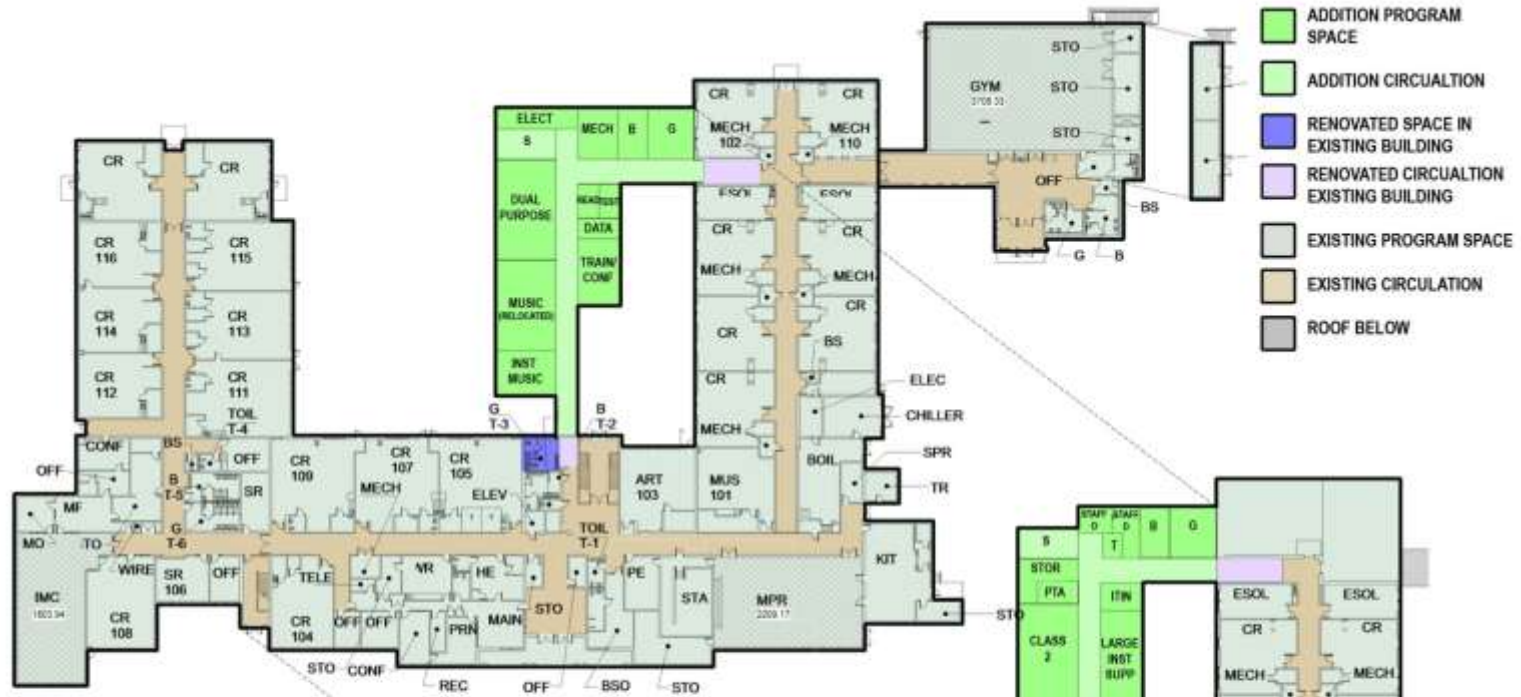
# Rosemont Elementary School



- SCHEME 1 SITE PLAN



# Rosemont Elementary School

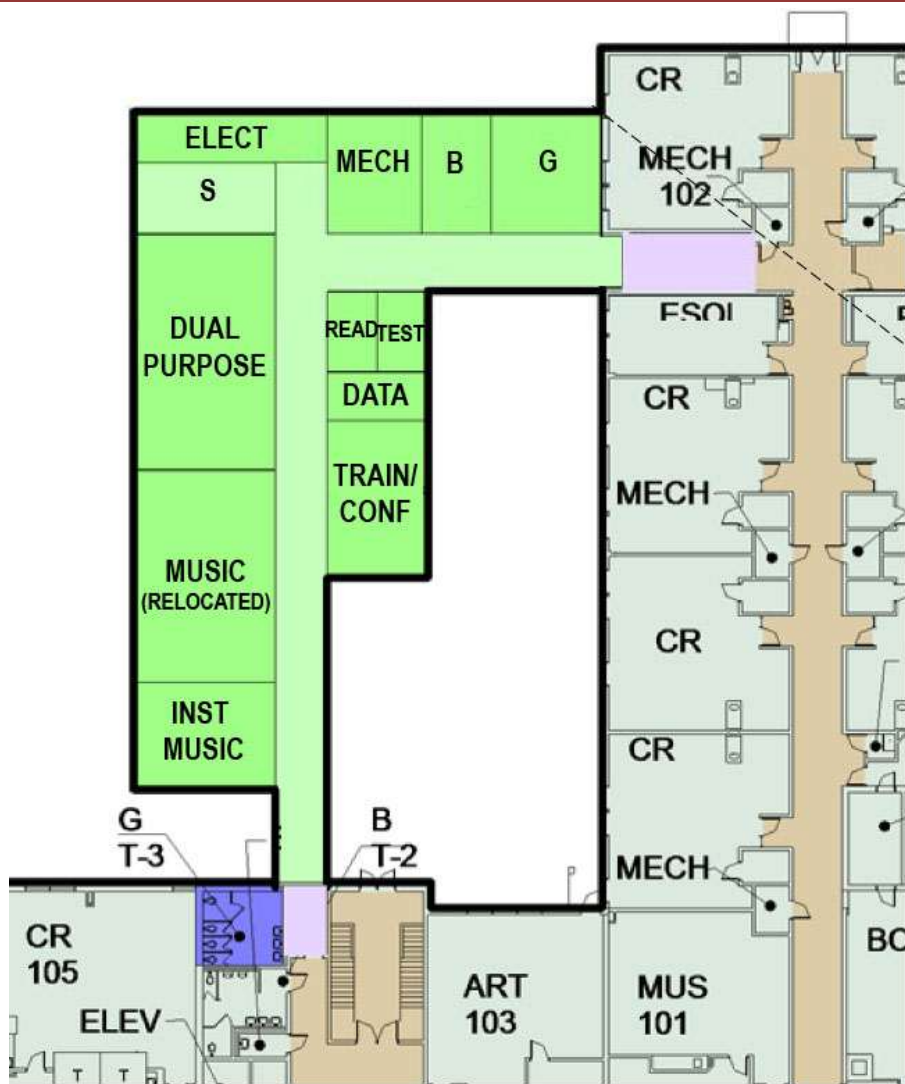


■ SCHEME 1 FIRST FLOOR PLAN

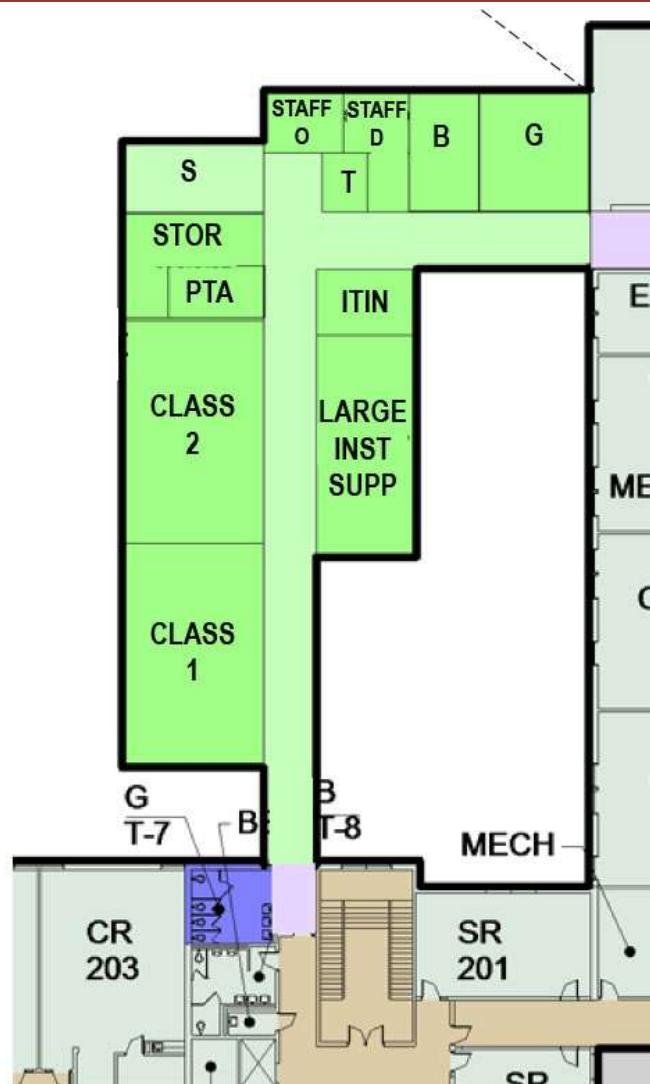


■ SCHEME 1 SECOND FLOOR PLAN

# Rosemont Elementary School



▪ SCHEME 1 FIRST FLOOR PLAN



▪ SCHEME 1 SECOND FLOOR PLAN

# Rosemont Elementary School



- SCHEME 2 SITE PLAN



# Rosemont Elementary School

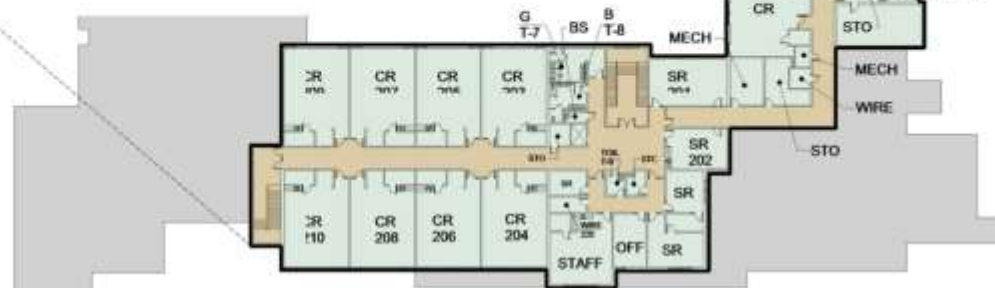


- SCHEME 2 LOWER LEVEL PARKING

# Rosemont Elementary School

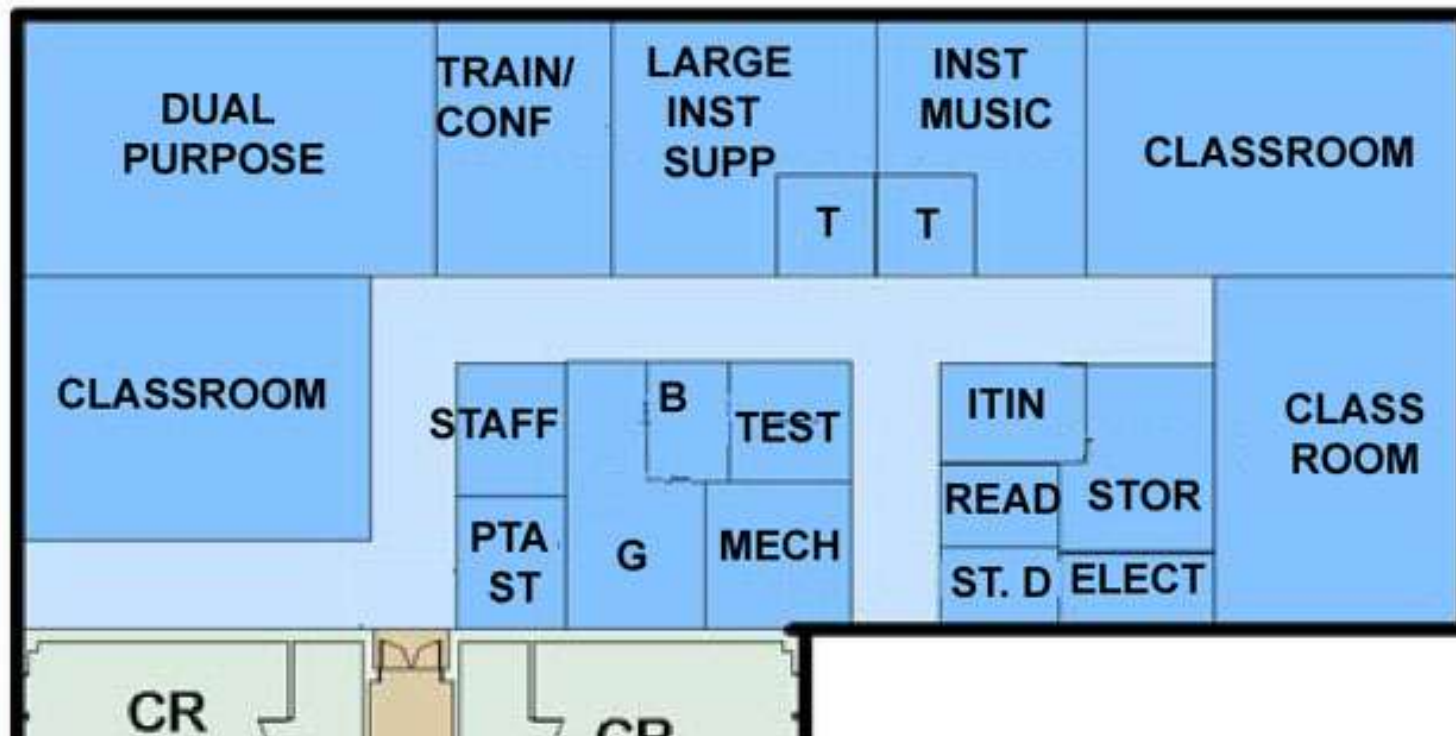


▪ SCHEME 2 FIRST FLOOR PLAN



▪ SCHEME 2 SECOND FLOOR PLAN

# Rosemont Elementary School



- SCHEME 2 FIRST FLOOR ADDITION

# Rosemont Elementary School

## Scheme 1



### Scheme 1 Pros

- Compact footprint – two stories
- Central location and good access to existing building
- Creates a looped circulation path on both stories
- No new elevator required only one stair
- No loss of program space in the existing building
- Maximum natural light preserved with courtyard
- Additional parking and field access improved

### Scheme 1 Cons

- Requires relocation of play areas
- Small impact to the size of one field

## Scheme 2



### Scheme 2 Pros

- Compact footprint
- Takes advantage of the slope on site for a lower story parking
- Preserves play areas
- Opportunity to fix erosion problem on site
- No loss of program space in the existing building.
- Additional parking possible (requires further study to confirm)

### Scheme 2 Cons

- Circulation does not create a loop
- Lower parking isolated from rest of school expensive to build
- Need ADA access from Lower Level
- Need to move relocatable classrooms
- Instrumental Music and Dual Purpose far from Art and Music



# Washington Grove Elementary School



- Current Core Capacity - 740
- Current Program Capacity - 603
- Projected Program Capacity with Addition – 740
- Current Enrollment - 408
- Projected Enrollment for 2015/2016 – 447
- Currently below Capacity
- Currently has 0 relocatables
- Site size – 8.5 acres
- Parking Spaces – 80 approx.
- Setbacks - Front 40', Rear 30', Side 15'



# Washington Grove Elementary School

When this project is complete, the following spaces are to be provided:

Capacity after the addition will be 740.

<b>Facility</b>	<b>#</b>	<b>Net Sq. Ft.</b>	<b>Total Net Sq. Ft.</b>
<b><u>Classrooms</u></b>			
Standard	6	900	5400
<b><u>Support Rooms</u></b>			
Itinerant Staff Office	1	150	150
<b><u>Staff Development Area</u></b>			
Staff Development Office	1	100	100
Reading Specialist Office	1	100	100
Training/Conference Room	1	450	450
<b><u>Building Service Facilities</u></b>			
General Storage	1	250	250
<b>Total</b>	<b>6</b>		<b>6450</b>

# Washington Grove Elementary School



- SCHEME 1 SITE PLAN



# Washington Grove Elementary School

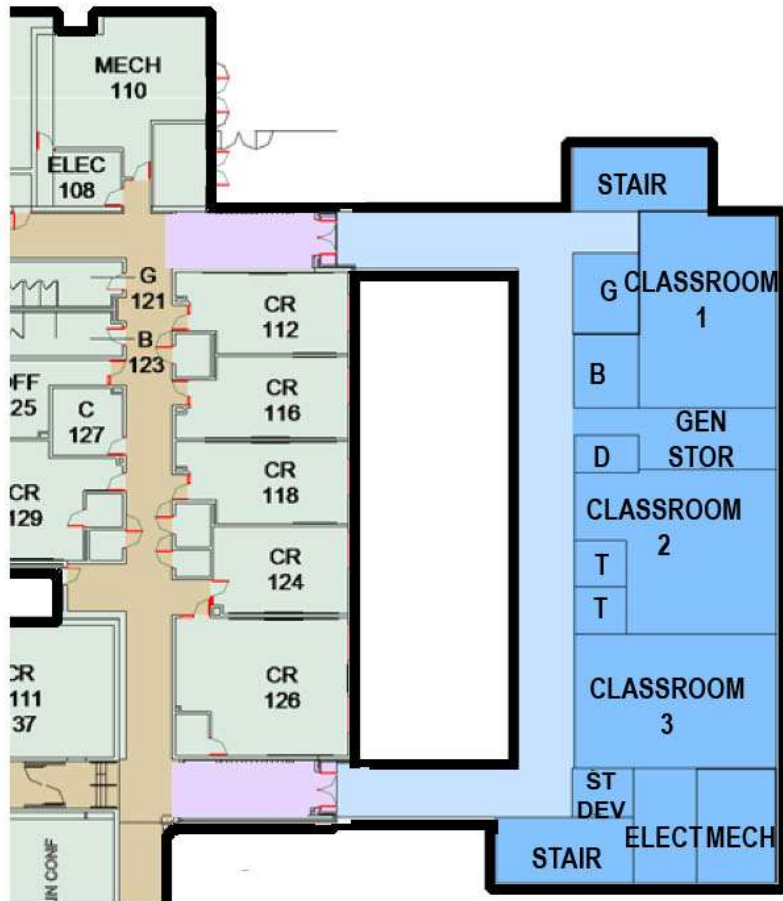
- ADDITION PROGRAM SPACE
- ADDITION CIRCULATION
- RENOVATED SPACE IN EXISTING BUILDING
- EXISTING PROGRAM SPACE
- EXISTING CIRCULATION
- ROOF BELOW

■ SCHEME 1 SECOND FLOOR PLAN

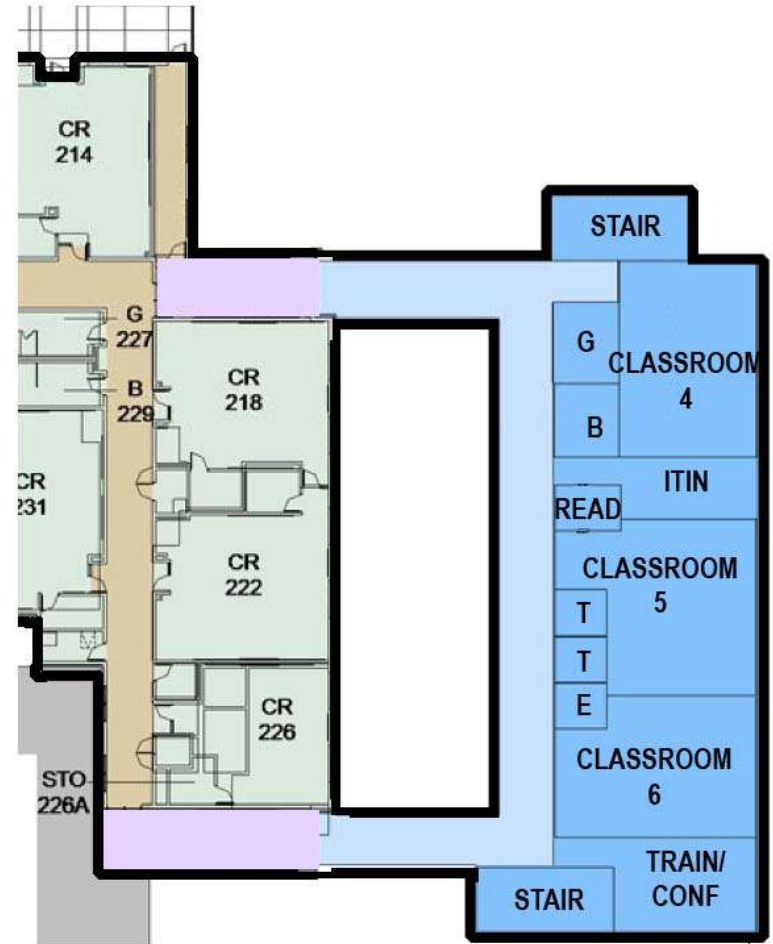


■ SCHEME 1 FIRST FLOOR PLAN

# Washington Grove Elementary School



▪ FIRST FLOOR

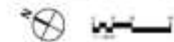


▪ SECOND FLOOR

# Washington Grove Elementary School



- SCHEME 2 SITE PLAN



# Washington Grove Elementary School

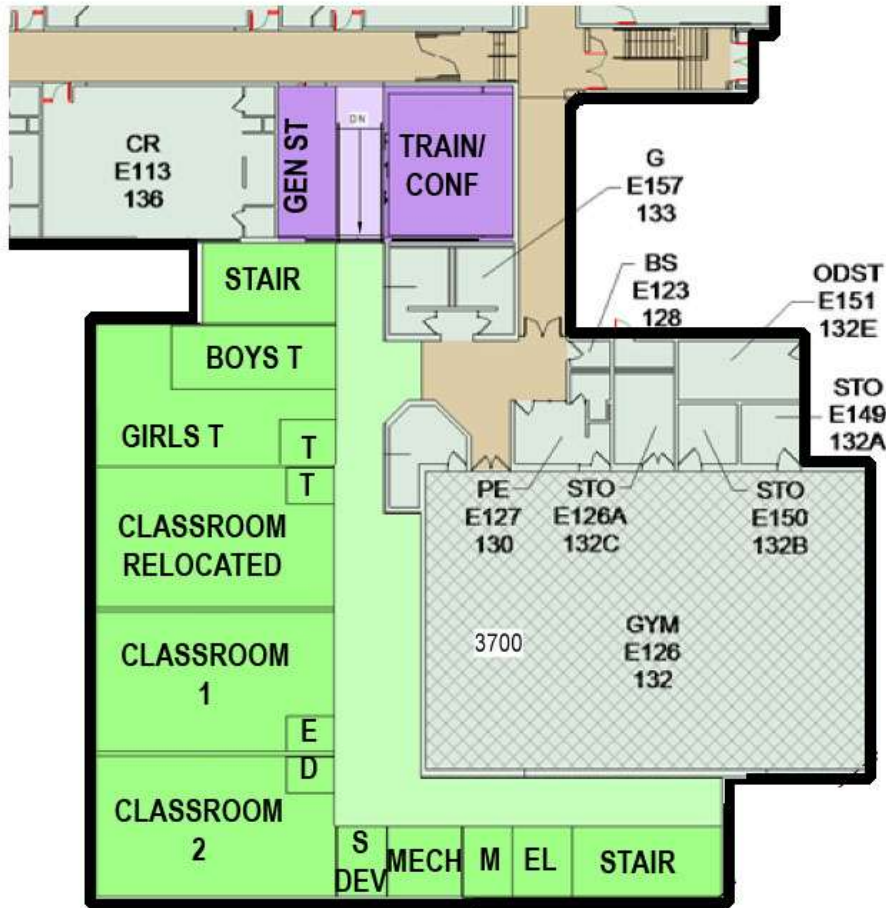
- ADDITION PROGRAM SPACE
- ADDITION CIRCULATION
- RENOVATED SPACE IN EXISTING BUILDING
- EXISTING PROGRAM SPACE
- EXISTING CIRCULATION
- ROOF BELOW

■ SCHEME 2 SECOND FLOOR PLAN

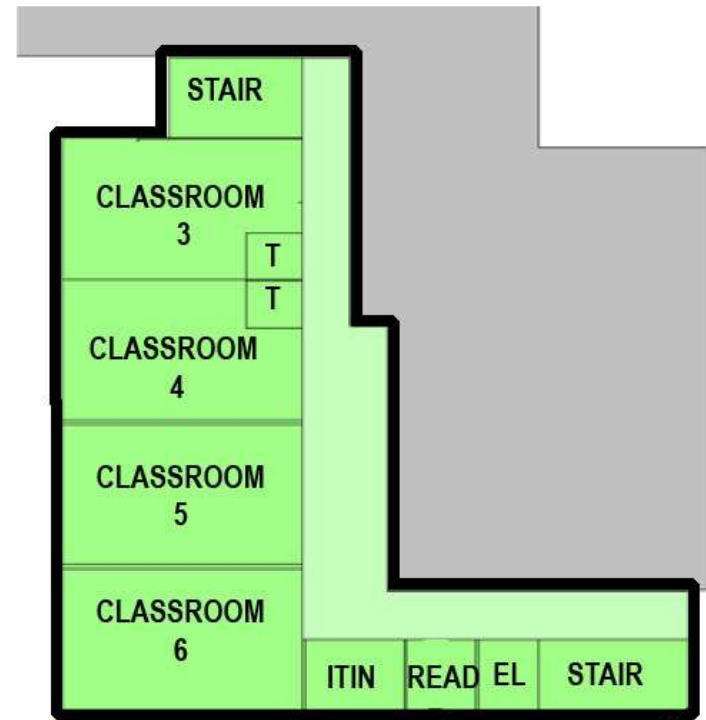


■ SCHEME 2 FIRST FLOOR PLAN

# Washington Grove Elementary School



▪ FIRST FLOOR PLAN



▪ SECOND FLOOR PLAN



# Washington Grove Elementary School

## Scheme 1



### Scheme 1 Pros

- Compact footprint – two stories
- Central location and good access to existing building
- Creates a looped circulation path on both stories
- No new elevator required only two stairs
- No loss of program space in the existing building
- Maintains natural light to all existing classrooms
- Minimal impact on field
- Connection to building at existing stairwells no other alteration to existing building

### Scheme 1 Cons

- Requires relocation of soft play area(s)
- Requires reconfiguration of fire access road
- Impacts the size of the field

## Scheme 2



### Scheme 2 Pros

- No loss of play area.
- Compact footprint – two stories
- Addition is away from fields and playgrounds
- Addition does not require revisions to the fire access road
- Addition maintains natural light to all classrooms

### Scheme 2 Cons

- No direct entry to Gym Lobby
- Does not connect to existing two story portion of building
- Requires two stairways and an elevator
- Classrooms are remote and isolated from rest of school
- Circulation does not loop
- Corridor is extra wide less efficient use of space
- Connecting to existing building through a classroom requires relocation of the classroom in the new addition and a new ramp.
- A classroom loses one window

# Summary of Findings

## ROSEMONT ELEMENTARY SCHOOL SCHEMES



SCHEME 1



SCHEME 2

## LAYTONSVILLE ELEMENTARY SCHOOL SCHEMES



SCHEME 1 - 640



SCHEME 2 - 740

## GOSHEN ELEMENTARY SCHOOL SCHEMES



SCHEME 1



SCHEME 2

## WASHINGTON GROVE ELEMENTARY SCHOOL SCHEMES



SCHEME 1



SCHEME 2

# Summary of Findings

## ROSEMONT ELEMENTARY SCHOOL SCHEMES



**SCHEME 1**



**SCHEME 2**

## GOSHEN ELEMENTARY SCHOOL SCHEMES



**SCHEME 1**

**SCHEME 2**

## LAYTONSVILLE ELEMENTARY SCHOOL SCHEMES



**SCHEME 1 - 640**



**SCHEME 2 - 740**

## WASHINGTON GROVE ELEMENTARY SCHOOL SCHEMES



**SCHEME 1**



**SCHEME 2**

# Summary of Findings

## ROSEMONT ELEMENTARY SCHOOL SCHEMES



SCHEME 1



SCHEME 2

## LAYTONSVILLE ELEMENTARY SCHOOL SCHEMES



SCHEME 1 - 640



SCHEME 2 - 740

## GOSHEN ELEMENTARY SCHOOL SCHEMES



SCHEME 1



SCHEME 2

## WASHINGTON GROVE ELEMENTARY SCHOOL SCHEMES



SCHEME 1



SCHEME 2

# Gaithersburg Elementary School



- Current Core Capacity- 740
- Current Program Capacity - 771
- Current Enrollment- 812
- Projected Enrollment for 2015-2016 – 871
- Currently has 7 relocatables
- Site size- 9.2 acres
- Previous addition built out to 740



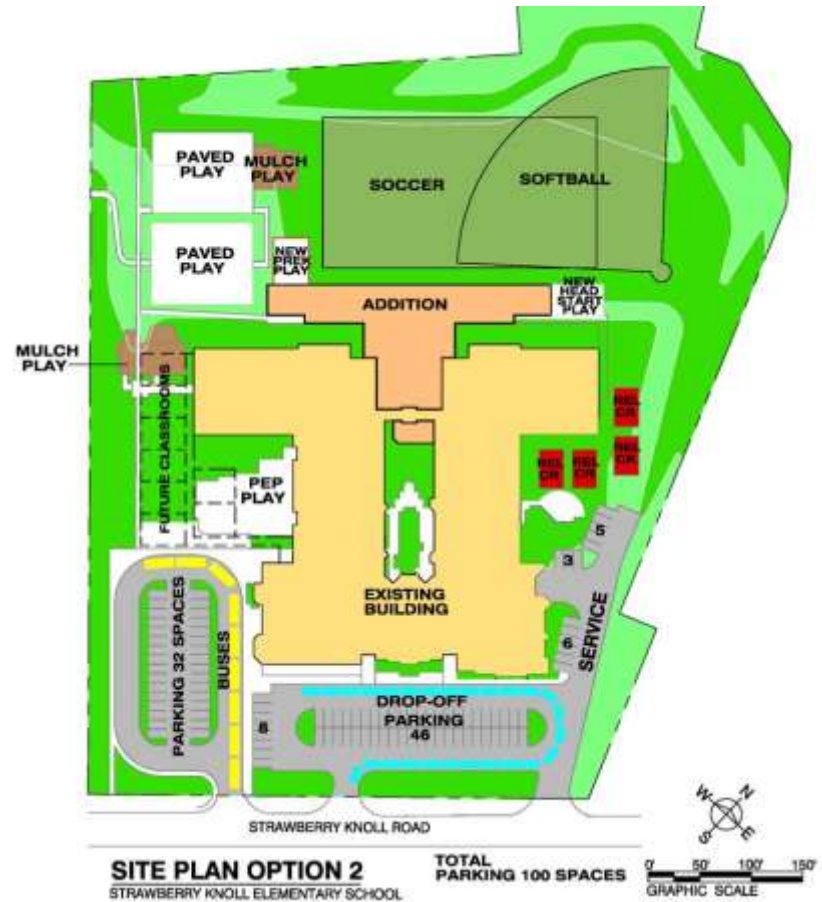
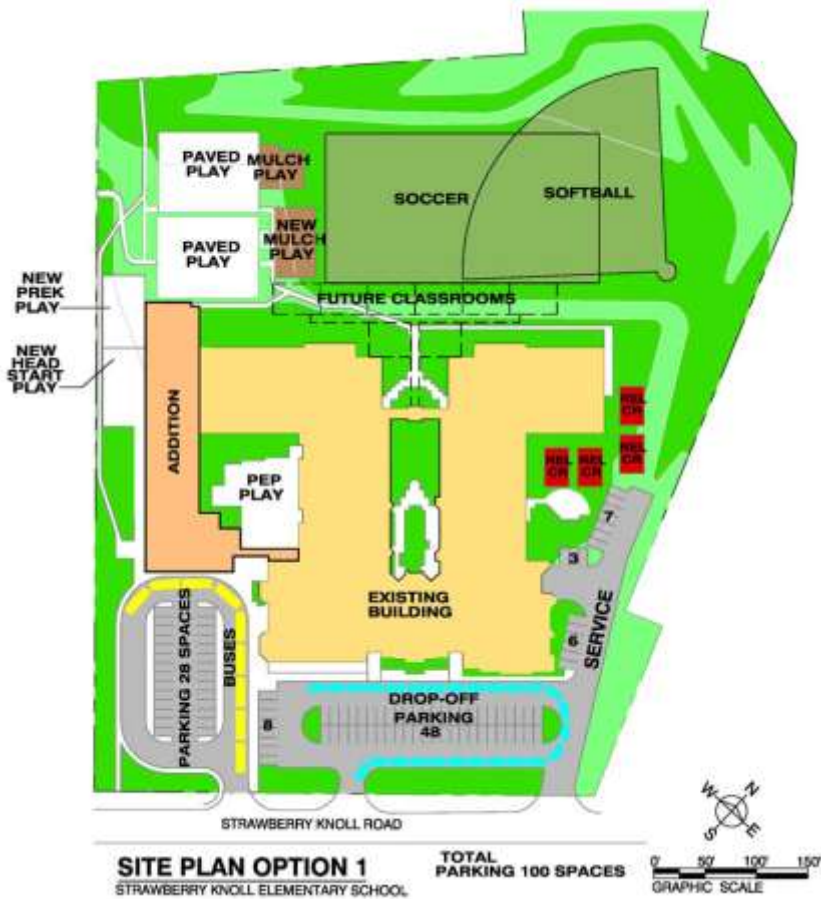
# Strawberry Knoll Elementary School

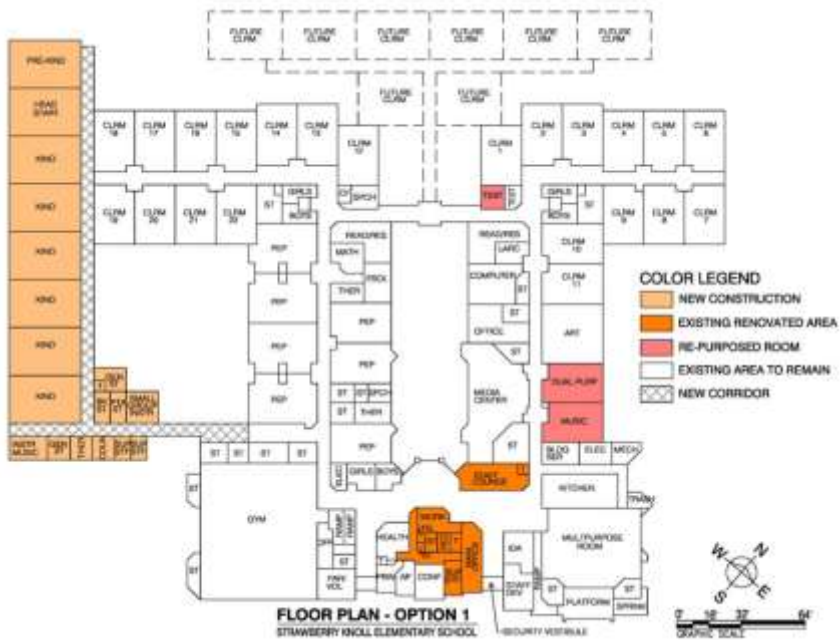


- Current Core Capacity- 640
- Current Program Capacity - 427
- Current Enrollment- 595
- Projected Enrollment for 2015-2016 – 633
- Currently has 6 relocatables
- Site size- 10.8 acres
  
- Studied a 9 classroom addition in 2013



# Strawberry Knoll Elementary School



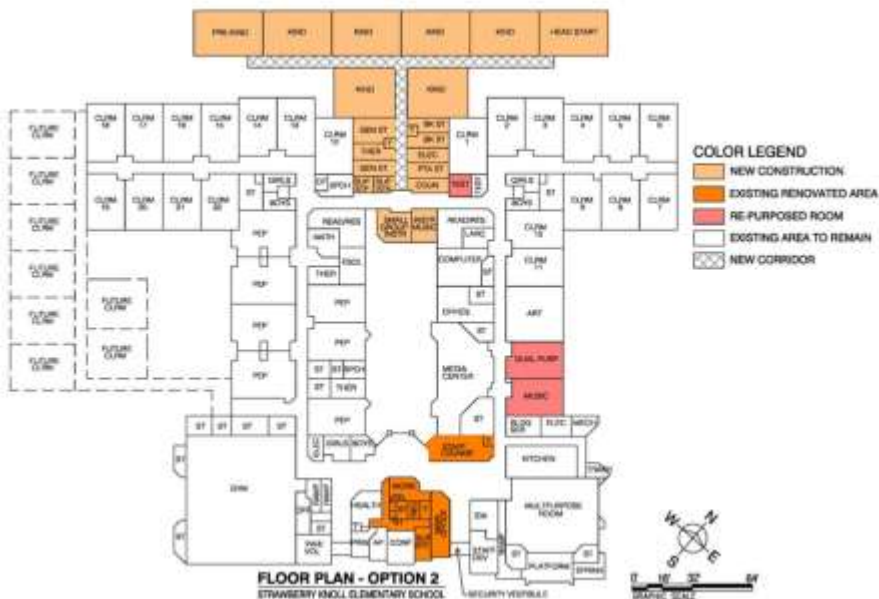


### Scheme 1 Pros

- The addition is one-story and will not require stairs or elevator
- The Kindergartens are near the front of the building
- Circulation is improved

### Scheme 1 Cons

- The footprint is large



### Scheme 2 Pros

- Does not require stairs and elevator
- Can be built without disrupting existing building

### Scheme 2 Cons

- Has a large footprint
- Kindergarten is at the back of the building
- Encroaches onto existing playfields

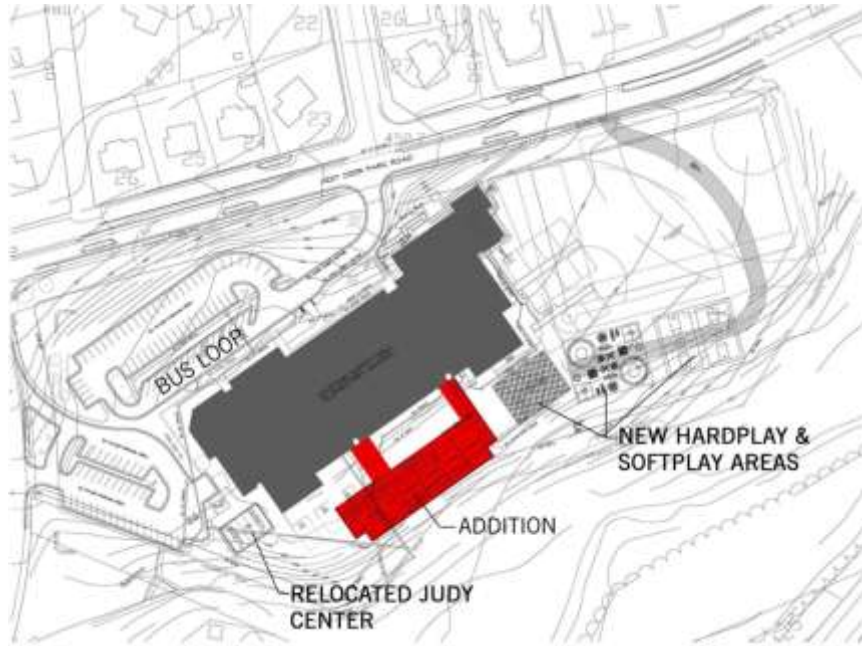


# Summit Hall Elementary School

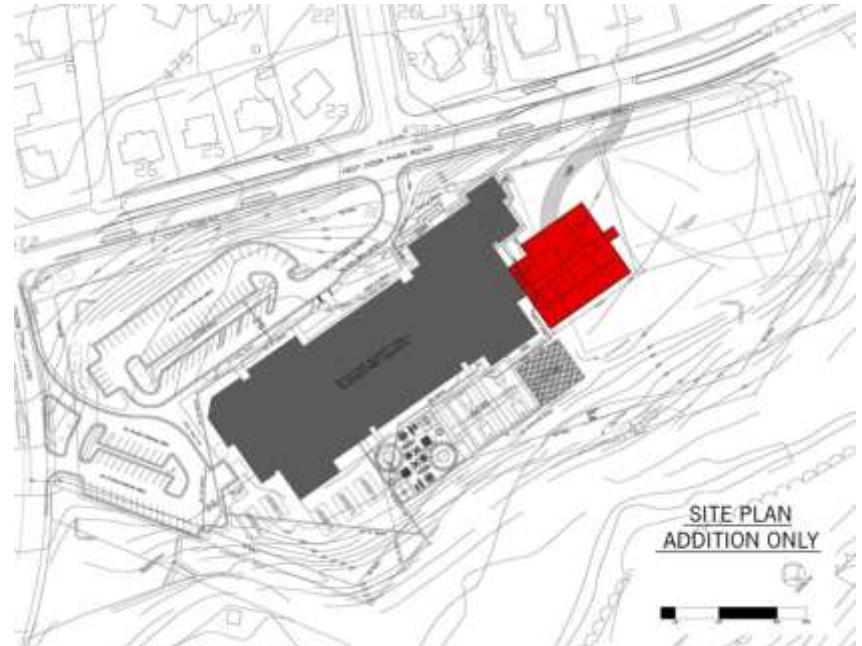


- Current Core Capacity- 640
- Current Program Capacity - 413
- Current Enrollment- 628
- Projected Enrollment for 2015-2016 – 669
- Currently has 10 relocatables
- Site size- 10.2 acres
  
- Studied an 8 classroom addition in 2013 with 640 core capacity
  
- Summit Hall ES has a Revitalization/Expansion project in the pipeline, with an estimated completion date of 2022
- As part of this project, Summit Hall will be built larger to accommodate up to 740 students

# Summit Hall Elementary School



Option 1



Option 2

## Option 1



### Pros

- Allows space to reconfigure and add additional parking in future
- Existing corridors aligned
- Kindergarten and PreK rooms clustered
- Simple circulation

## Option 1 after Revitalization/expansion



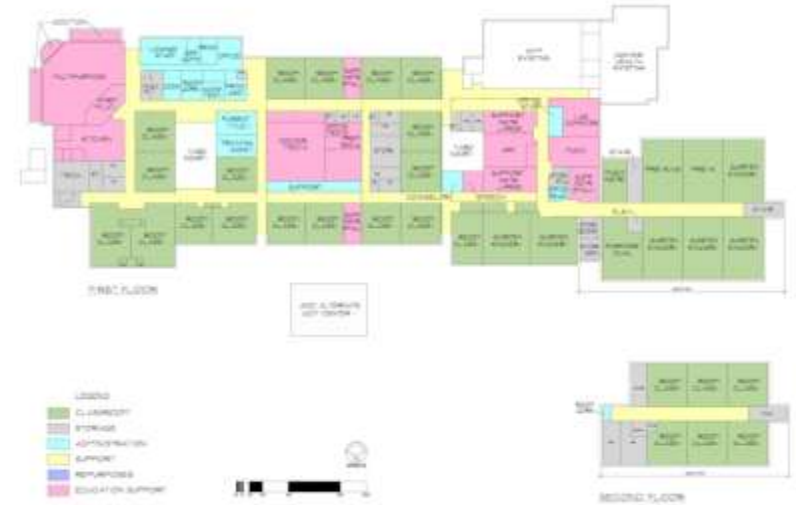
### Cons

- The single main hallway will be congested
- Existing relocatable classrooms will need to be moved during construction
- Judy Center will need to be relocated
- Large building footprint (inefficient) initially
- Existing gym will remain and will be far from playfields

## Option 2



## Option 2 After Revitalization/Expansion



### Pros

- Smaller building footprint
- Existing relocatable classrooms and Judy Center do not have to move
- Efficiency 68%

### Cons

- Kindergarten far from entrance
- Large building footprint (inefficient) after future revitalization/expansion

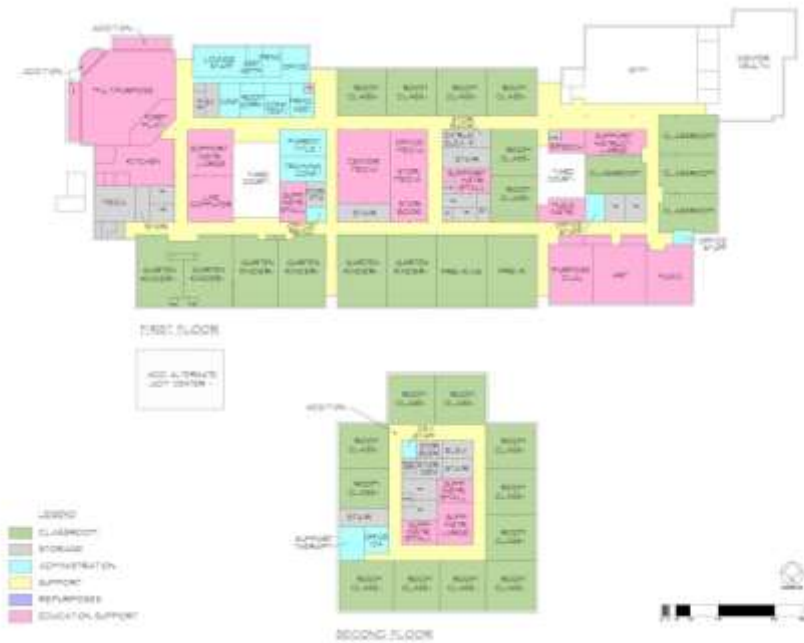
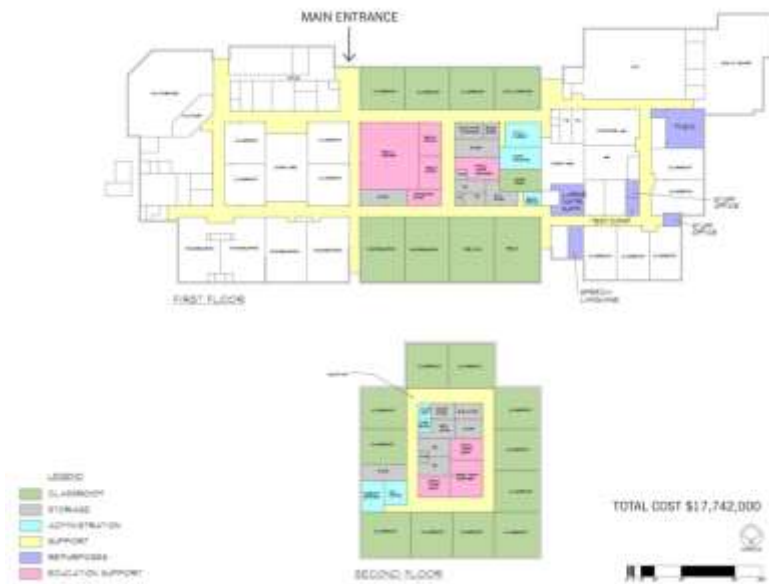
### Cons

- Does not lend itself well to reconfiguration of existing building in revitalization/expansion
- Media Center will be windowless
- Gym far from playfields
- Difficult to lock off portions of the building for after hours use
- Reduces the available number and size of playfields. A full size soccer field will no longer fit on the site.

## Option 3

## Option 3

After revitalization/expansion



### Pros

- Smaller building footprint
- Kindergarten and PreK rooms clustered
- More open space for play areas
- Judy Center does not have to move

### Cons

- A large area of existing space will need to be renovated to support the second floor

### Cons

- Kindergarten classrooms are not near the front of the building
- Extremely difficult to construct the addition while the school is occupied
- Gym is not near playfields
- Media Center will be windowless
- This option is the most expensive
- Very low building efficiency 40%

# Summary of Findings

There is a 708 seat deficit of space in the cluster elementary schools.  
Six addition projects could add up to 1070 capacity.

Gaithersburg Capacity Study Findings

Schools	Actual Enrollment 2014-15	Projected Enrollment						Capacity with Addition or Rev/Ex	Notes
		2015-16	2016-17	2017-18	2018-19	2019-20	2020-21		
Laytonsville ES	448	448	448	448	448	448	448	640 or 740	12 classroom would add 292 capacity
	428	416	408	404	396	389	383		
<i>space available</i>	20	32	40	44	52	59	65		
Gaithersburg ES	771	771	771	771	771	771	771	740 (no change)	
	795	871	915	925	918	907	868		
<i>space deficit</i>	-24	-100	-144	-154	-147	-136	-97		
Goshen ES	533	533	533	533	533	533	533	740	10 classroom would add 207 capacity
	577	602	600	608	607	594	592		
<i>space deficit</i>	-44	-69	-67	-75	-74	-61	-59		
Rosemont ES	590	590	590	590	590	590	590	640	4 classroom would add 50 capacity
	569	634	682	730	787	821	855		
<i>space deficit</i>	21	-44	-92	-140	-197	-231	-265		
Strawberry Knoll ES	453	453	453	453	453	453	453	640	9 classroom would add 187 capacity
	599	633	640	627	630	625	626		
<i>space deficit</i>	-146	-180	-187	-174	-177	-172	-173		
Summit Hall ES	443	443	443	443	443	443	443	640 or 740	Rev/Ex will add 297 capacity 8 classroom addition would add 197 capacity
	634	669	663	666	669	653	650		
<i>space deficit</i>	-191	-226	-220	-223	-226	-210	-207		
Washington Grove ES	603	603	603	603	603	603	603	740	6 classroom would add 137 capacity
	414	447	439	463	497	529	575		
<i>space available</i>	189	156	164	140	106	74	28		

# Additional Comments for Consideration

- The participants at the meetings expressed the desire to have the RevEx work proposed at Summit Hall ES completed as soon as possible.
- Gaithersburg ES is over capacity and has a large population of walkers enrolled in the school. The preference expressed by the participants was to keep the students as close to the base school as possible. There was concern about public transportation access to other schools in the cluster and long bus rides if some of these students are relocated through a boundary change.
- The MCPS process for Rev/Ex and capacity deficit project funding and the maximum size recommendations for elementary schools were questioned. It was requested that the maximum size for an elementary school of 740 capacity be re-evaluated if possible to keep students closer to their base school.
- Multiple schools expressed parking and traffic flow concerns with any addition and student capacity increase associated with the proposed additions.
- There was concern expressed by participants that looking for and acquiring a new school site or evaluating the existing sites would further delay the relief of overcrowding.

# What Will Happen Next?

- **In the fall the superintendent will review the capacity study brochure summarizing all findings and cost estimates**
- **The superintendent will make a recommendation on classroom additions, a new elementary school, or a combination of both**
- **The superintendent's recommendation will include a request for funds to design and construct whatever is recommended**





# What Will Happen Next?

- **If the superintendent recommends a new elementary school be opened, then a site selection advisory committee would be formed to evaluate site options.**
- **Whether the solution to space shortages are classroom additions or a new school, it is likely that some school boundaries will change once the new capacity is built.**
- **Boundary changes would be timed to occur when the additional capacity becomes available.**
- **In the meantime, capacity will be handled with relocatable classrooms as needed.**

# What Will Happen Next?

- **In November 2015, the Board of Education will hold a work session, followed by public hearings**
- **In January 2016 the County Executive will publish his recommendations**
- **In May 2016 the County Council will make a decision on the final budget**

# questions?



More information on the capacity study will be posted at the following web location as materials become available:

<http://www.montgomeryschoolsmd.org/departments/construction/studies/gcstudy.shtm>