

MOSELEYARCHITECTS
DESIGNING SOLUTIONS ■ BUILDING TRUST ■ ENRICHING LIVES

Montgomery County Public Schools

**GAITHERSBURG CLUSTER COMPREHENSIVE
ELEMENTARY SCHOOL CAPACITY STUDY
WASHINGTON GROVE ELEMENTARY SCHOOL**

April 13, 2015

4:00 – 5:30 School Meeting

7:00 – 8:30 Community Meeting

Purpose of Elementary Capacity Study

- Board of Education adopted study
- Address significant space shortages at Gaithersburg Cluster elementary schools
- Study possible additions at four of the schools
- Compare cost of construction of additions to the cost of constructing a new elementary school

Enrollment projections

Gaithersburg Cluster Elementary Schools Projections September 23, 2014

School	Enrollment 2014-15	Projected Enrollment					
		2015-16	2016-17	2017-18	2018-19	2019-20	2020-21
Gaithersburg ES ***							
Capacity	732	732	732	732	732	732	732
Enrollment	824	879	915	925	918	907	868
space available/deficit	-92	-147	-183	-193	-186	-175	-136
Comments							
Goshen ES *							
Capacity	503	503	503	503	503	503	503
Enrollment	574	599	600	608	607	594	592
space available/deficit	-71	-96	-97	-105	-104	-91	-89
Comments							
Laytonsville ES *							
Capacity	448	448	448	448	448	448	448
Enrollment	433	419	408	404	396	389	383
space available/deficit	15	29	40	44	52	59	65
Comments							
Rosemont ES *							
Capacity	561	561	561	561	561	561	561
Enrollment	552	616	682	730	787	821	855
space available/deficit	9	-55	-121	-169	-226	-260	-294
Comments							
Strawberry Knoll ES **							
Capacity	427	427	427	427	427	427	427
Enrollment	617	643	640	627	630	625	626
space available/deficit	-190	-216	-213	-200	-203	-198	-199
Comments							
Summit Hall ES **							
Capacity	413	413	413	413	413	413	413
Enrollment	620	650	663	666	669	653	650
space available/deficit	-207	-237	-250	-253	-256	-240	-237
Comments		revitalization/ expansion scheduled for completion Jan 2023					
Washington Grove ES *							
Capacity	587	587	587	587	587	587	587
Enrollment	401	402	419	443	477	509	555
space available/deficit	186	185	168	144	110	78	32
Comments							
Total Capacity	3,671	3,671	3,671	3,671	3,671	3,671	3,671
Total Enrollment	4,021	4,208	4,327	4,403	4,484	4,498	4,529
space available/deficit	-350	-537	-656	-732	-813	-827	-858

Why?



- Need to know the following:
 - Which schools can we add classrooms to?
 - How large can the classroom additions be?
 - How much would the classroom additions cost?
- The Superintendent will be able to make recommendations to address the space shortages as part of the FY 2017–2022 Capital Improvements Program (CIP) in October 2015.

What will the study explore?

- Possible classroom additions at four of the schools in the study area
- Ability to build classroom additions at the schools that are over capacity
- Ability to build classroom additions at schools that are not over capacity but could relieve those schools that are over capacity through future boundary changes



What the study will not explore.

- **No** sites for future schools will be explored in this study
- **No** boundary changes will be explored as part of this study
- Since we have already studied Strawberry Knoll and Summit Hall we will not be revisiting those schools as a part of this study

Capacity Study Process




- At the completion of the meetings at the 4 schools, a 2nd communitywide meeting will be conducted to present all of the plans.
- Attendees will have the opportunity to provide feedback on the plans at the communitywide meeting.
- At the conclusion of the process, the architect will provide cost estimates of the classroom additions that will be compared to the cost of constructing a new elementary school.

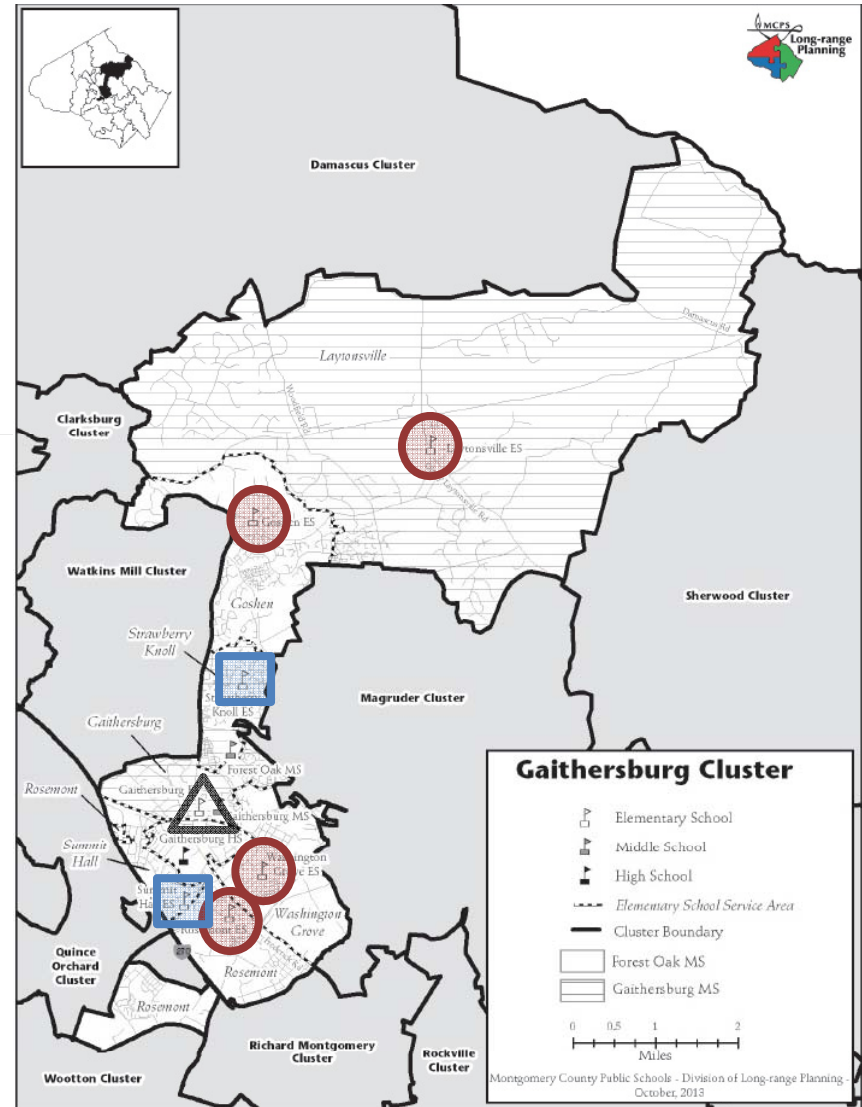


Comprehensive Capacity Study

Capacity Analysis

	<u>Program Capacity</u>	
	<u>Current</u>	<u>Future</u>
Washington Grove	587	740
Rosemont	561	640
Goshen	503	740
Laytonsville	448	640
Gaithersburg	732	732
Strawberry Knolls	427	640
Summit Hall (w/ Add)	413	640
Summit Hall (w/RevEx)	413	740

- Gaithersburg ES** 
- Feasibility Study Completed** 
- Comprehensive Capacity Projects** 



Upcoming Meeting Dates

School

Date & Time

Rosemont Elementary School

16400 Alden Ave., Gaithersburg, MD 20877

3-11-15 (3:30pm & 7:00pm)

Media Center

Goshen Elementary School

8701 Warfield Road, Gaithersburg, MD 20882

3-25-15 (4:00pm & 7:00pm)

Media Center

Laytonsville Elementary School

21401 Laytonsville Rd, Gaithersburg, MD 20882

3-30-15 (4:00pm & 7:00pm)

Media Center

Washington Grove Elementary School

8712 Oakmont St., Gaithersburg, MD 20877

4-13-15 (4:00pm & 7:00pm)

Media Center

Public Information meeting

Gaithersburg High School

101 Education Boulevard, Gaithersburg, MD 20877 Cafeteria

4-28-15 (7:00pm)

Washington Grove Elementary School



- Current Core Capacity - 740
- Current Program Capacity - 587
- Projected Program Capacity with Addition – 740
- Current Enrollment - 408
- Projected Enrollment for 2015/2016 – 447
- Currently below Capacity
- Currently has 0 relocatables.
- Site size – 8.5 acres
- Parking Spaces – 80 approx.
- Set Backs - Front 40', Rear 30', Side 15'



Washington Grove Elementary School



■ EX SECOND FLOOR

■ EXISTING FIRST FLOOR

Washington Grove Elementary School

When this project is complete, the following spaces are to be provided:

Capacity after the addition will be 740.

Facility	#	Net Sq. Ft.	Total Net Sq. Ft.
<u>Classrooms</u>			
Standard	6	900	5400
<u>Support Rooms</u>			
Itinerant Staff Office	1	150	150
<u>Staff Development Area</u>			
Staff Development Office	1	100	100
Reading Specialist Office	1	100	100
Training/Conference Room	1	450	450
<u>Building Service Facilities</u>			
General Storage	1	250	250
Total	6		6450

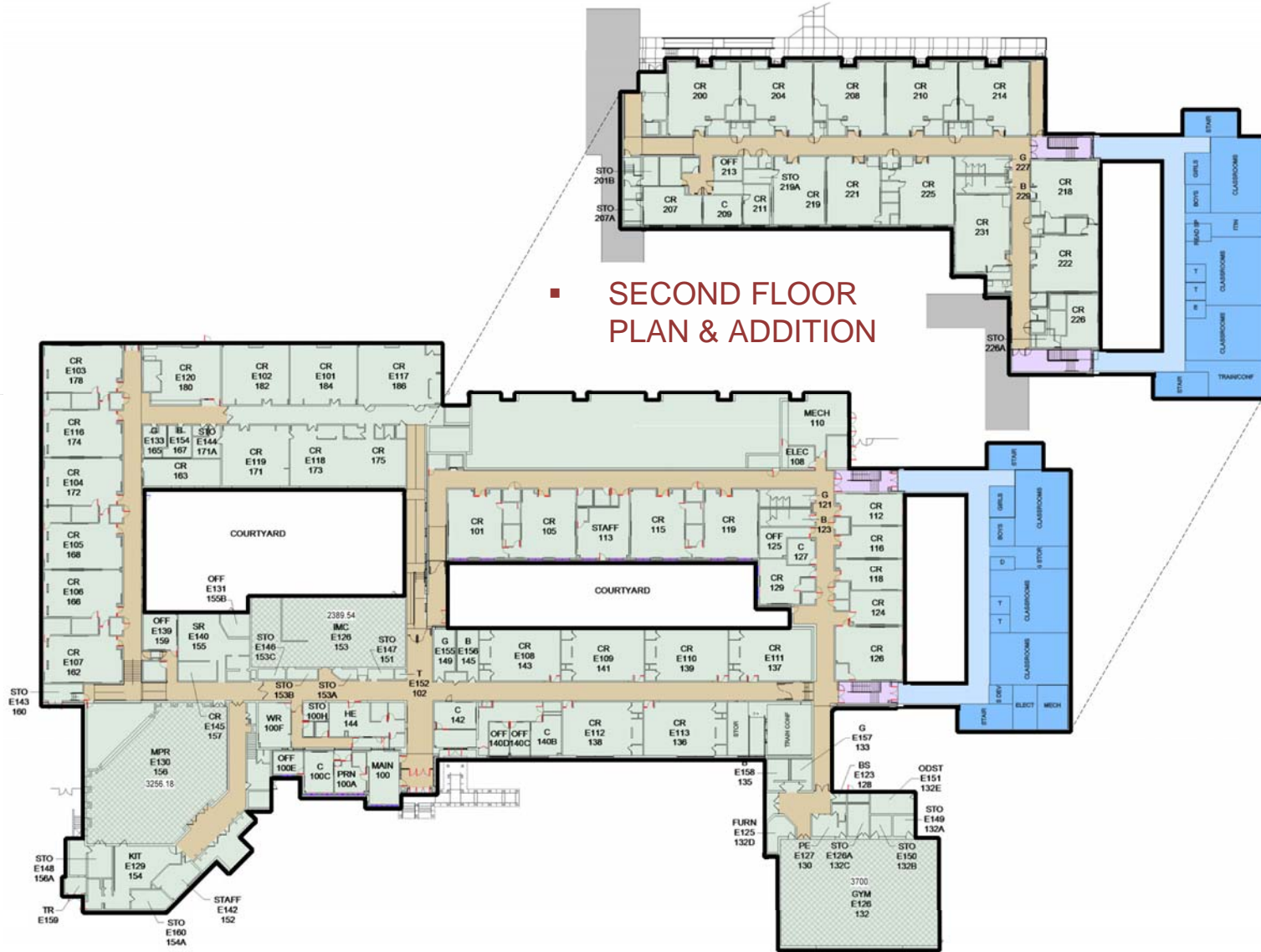
Washington Grove Elementary School



- PREFERRED SITE PLAN



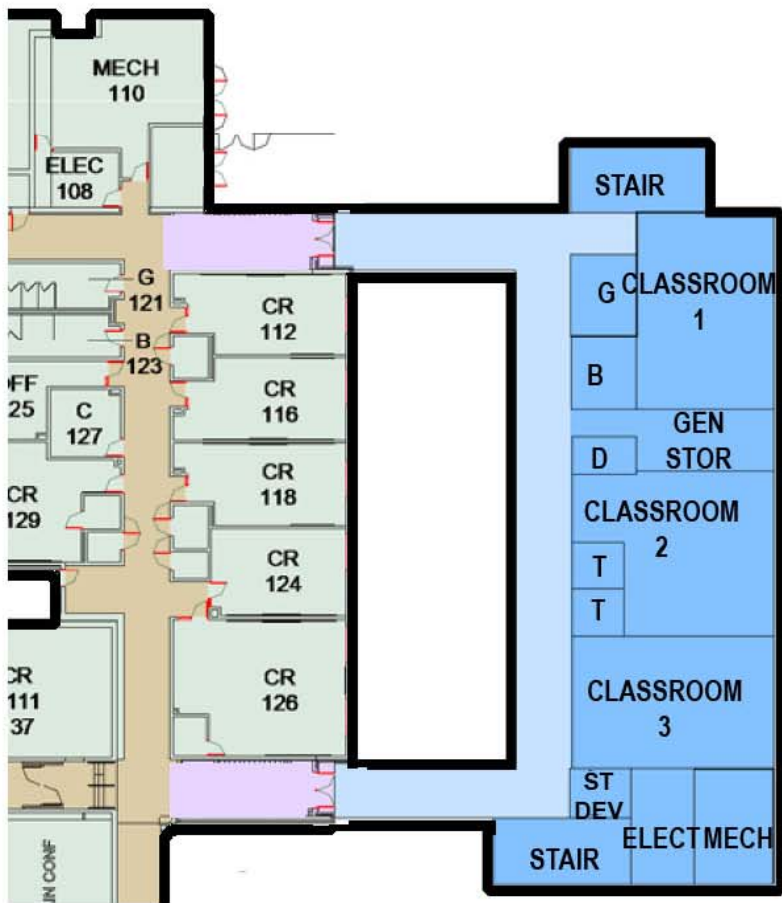
Washington Grove Elementary School



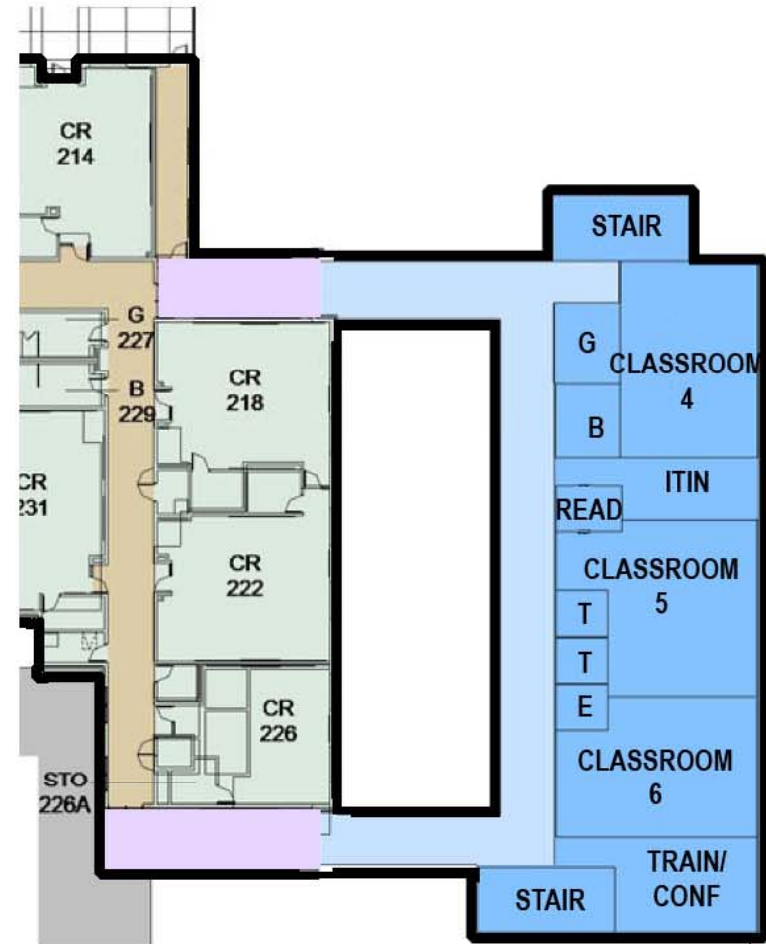
■ SECOND FLOOR PLAN & ADDITION

■ FIRST FLOOR PLAN & ADDITION

Washington Grove Elementary School



▪ FIRST FLOOR



▪ SECOND FLOOR

Washington Grove Elementary School



Pros

- Compact footprint – two stories
- Central location and good access to existing building
- Creates a looped circulation path on both stories.
- No new elevator required only two stairs.
- No loss of program space in the existing building.
- Maintains natural light to all existing classrooms.
- Minimal impact on field.

Cons

- Requires relocation of soft play area(s)
- Requires reconfiguration of fire access road.
- Impacts the size of the field.

Washington Grove Elementary School



- ALTERNATE SITE PLAN



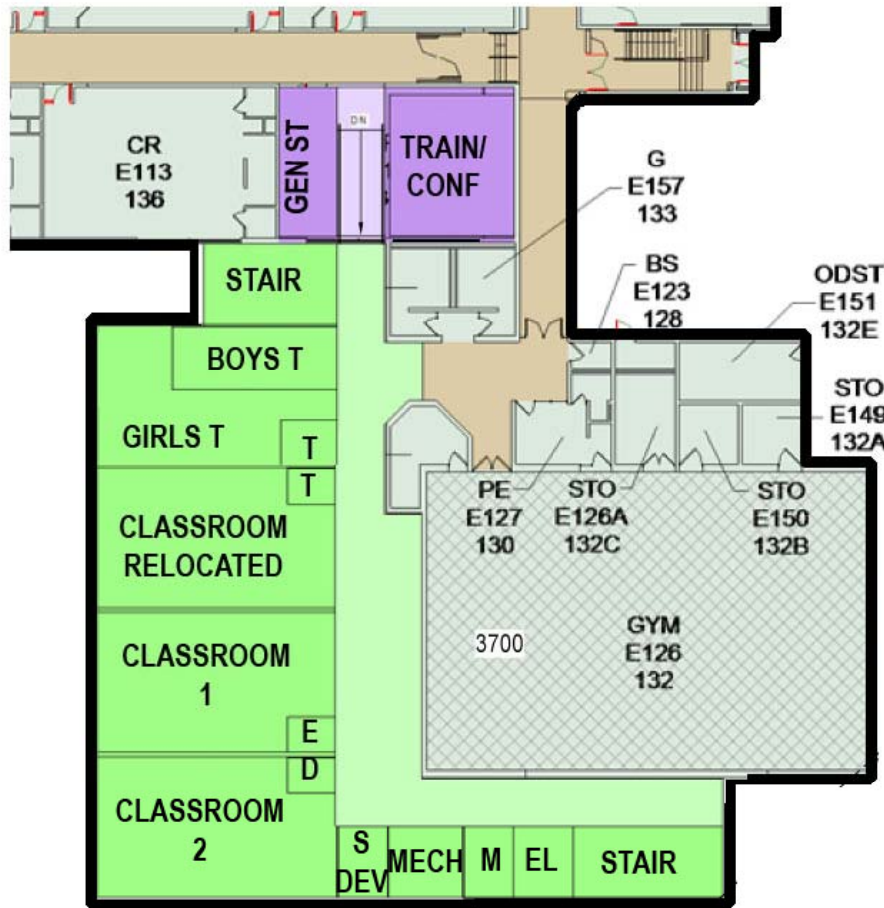
Washington Grove Elementary School



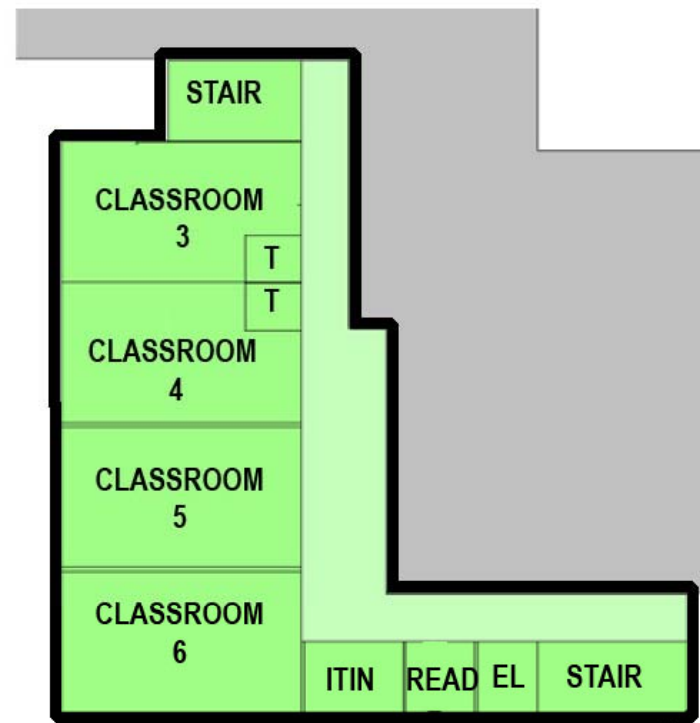
■ FIRST FLOOR PLAN & ADDITION

■ SECOND FLOOR PLAN & ADDITION

Washington Grove Elementary School



- FIRST FLOOR PLAN



- SECOND FLOOR PLAN

Washington Grove Elementary School



Pros

- No loss of play area.
- Compact footprint – two stories
- Addition is away from fields and playgrounds
- Addition does not require revisions to the fire access road
- Addition maintains natural light to all classrooms.
- Jogs in corridor potential break out areas.

Cons

- Does not connect to existing two story portion of building.
- Requires two stairways and an elevator.
- Classrooms are remote and isolated from rest of school.
- Circulation does not loop
- Corridor is extra wide with jogs in it due to existing building constraints.
- E113 loses one window.

Washington Grove Elementary School

- Information on the capacity studies will be posted at the following web location as materials become available:
- <http://www.montgomeryschoolsmd.org/departments/construction/studies/gcstudy.shtm>



questions?

MOSELEYARCHITECTS
DESIGNING SOLUTIONS ■ BUILDING TRUST ■ ENRICHING LIVES