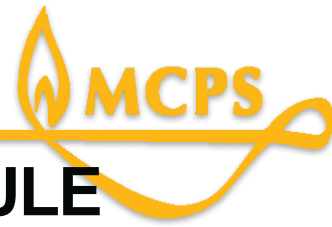


# ROCK TERRACE SCHOOL AND TILDEN MIDDLE SCHOOL

FEASIBILITY STUDY  
WORK SESSION #3  
November 18, 2015



# 1. CAPITAL IMPROVEMENTS PROGRAM (CIP) SCHEDULE

- **MAY 12, 2015 – BOARD OF EDUCATION ACTION ON COLLOCATION OF TWO SCHOOLS**
- **FALL 2015 – FEASIBILITY STUDY**
- **SUMMER 2018 – CONSTRUCTION BEGINS**
- **AUGUST 2020 – COMPLETION AND RELOCATION OF ROCK TERRACE SCHOOL AND TILDEN MIDDLE SCHOOL TO NEW FACILITY**

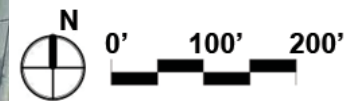
## 2. EXISTING SITE PLAN



EXISTING BUILDING:

FOOTPRINT:  
70,010 SF

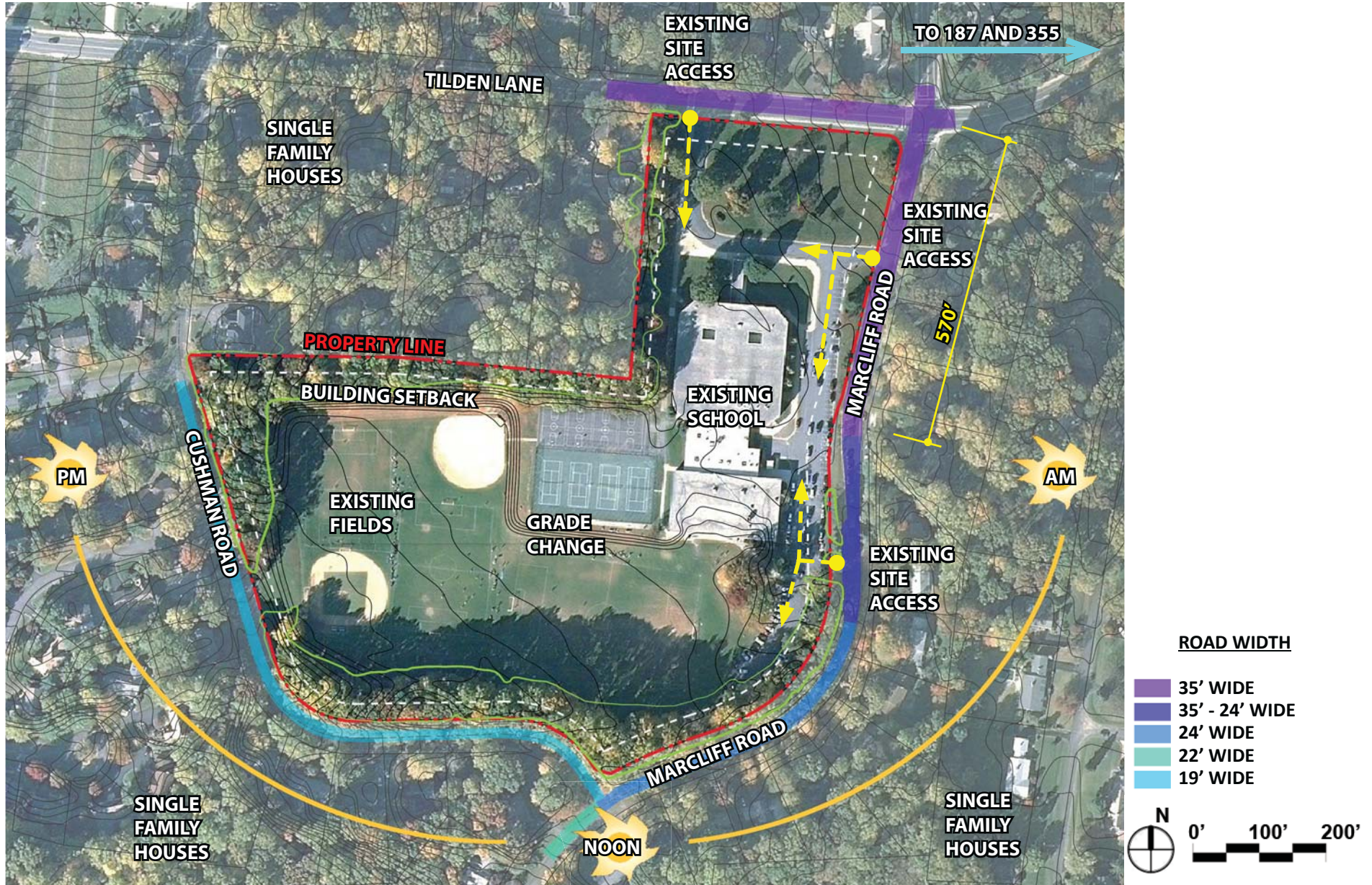
GROSS SQFT:  
116,400 SF



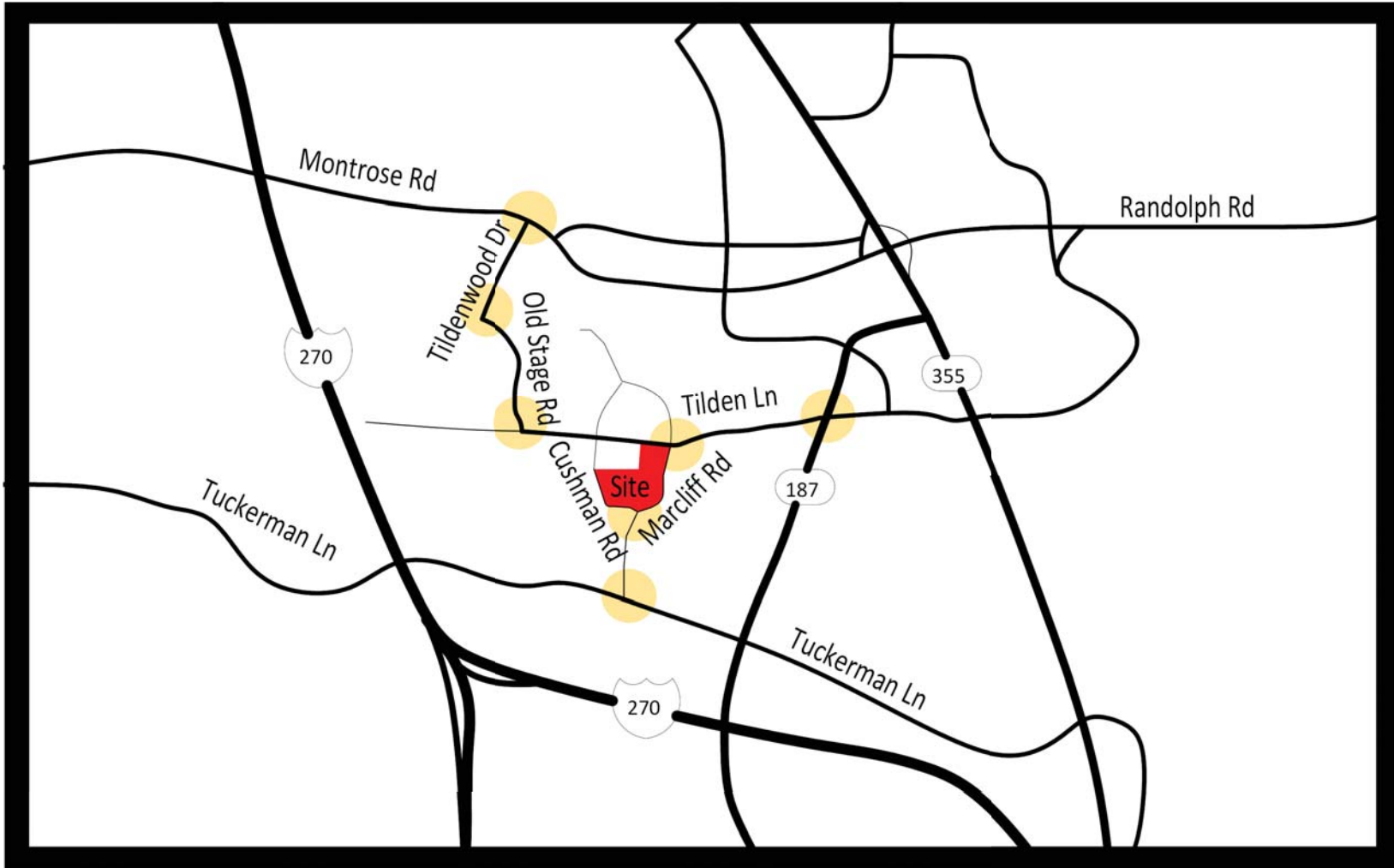
### 3. EXISTING SITE PHOTOS



# 4. PRELIMINARY SITE ANALYSIS



# 5. VICINITY MAP



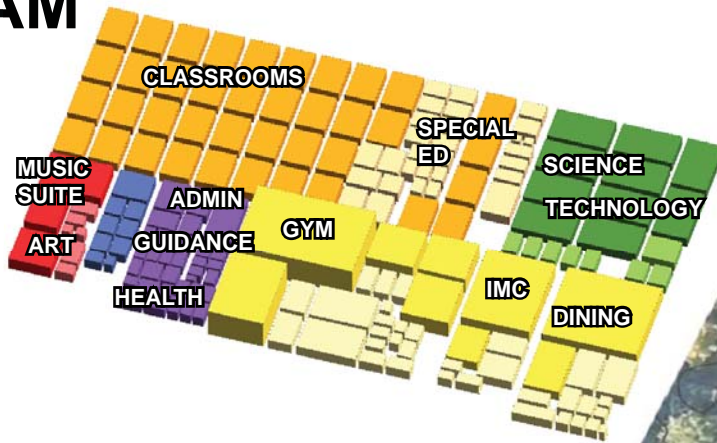
M-NCPPC CONTACT: Crystal Myers  
crystal.myers@montgomeryplanning.org  
TRAFFIC STUDY: Ed Axler 301 495 4536  
ed.axler@montgomeryplanning.org

 INTERSECTION BEING STUDIED

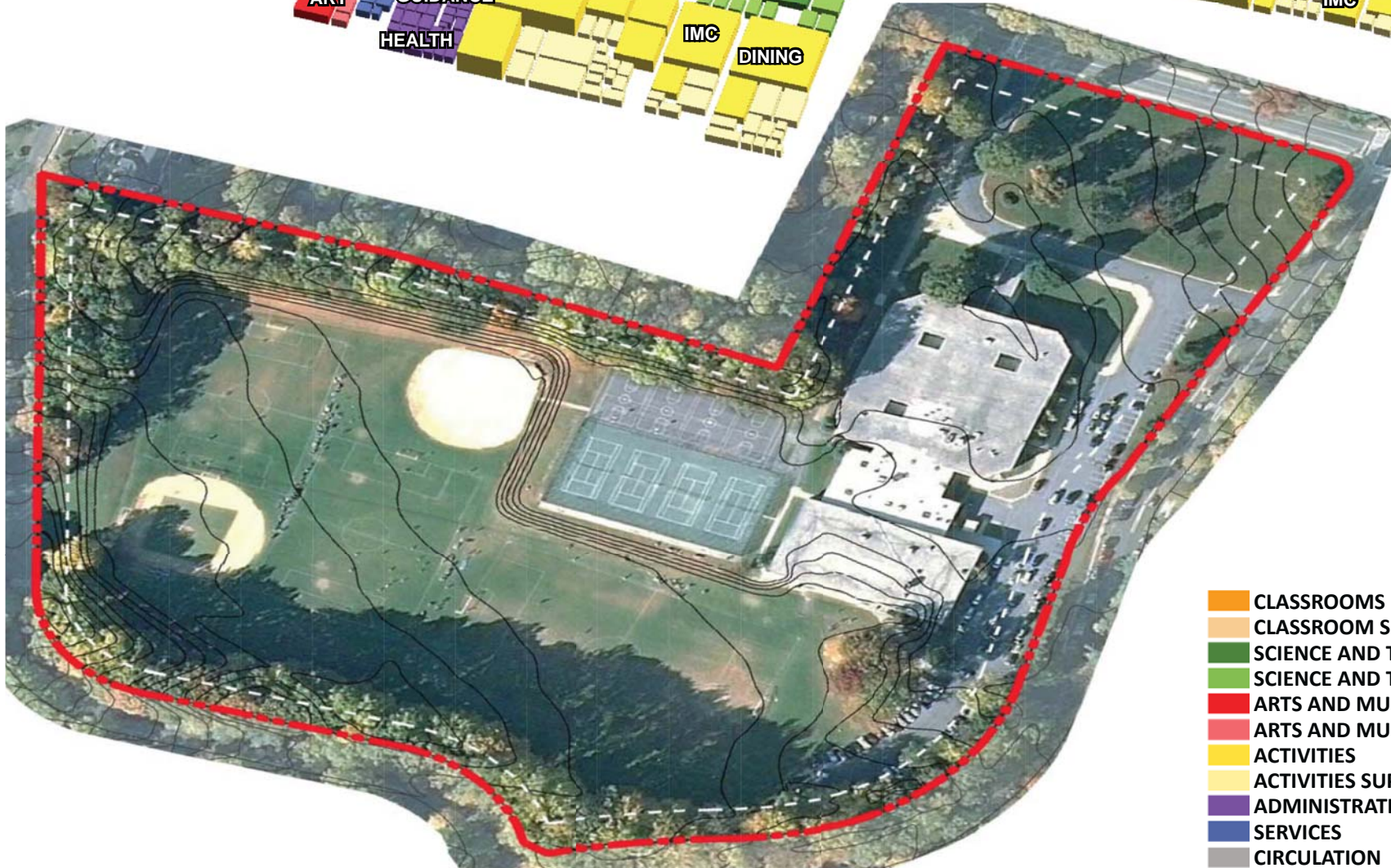
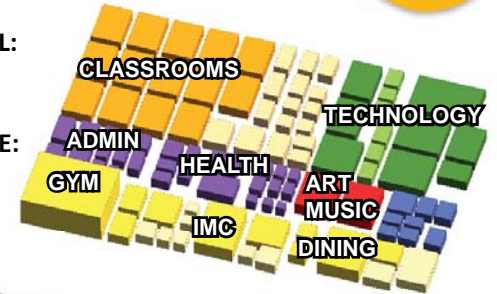


# 6. PROGRAM

TILDEN MIDDLE SCHOOL:  
 NET SQUARE FOOTAGE:  
 118,036 SF  
 GROSS SQUARE FOOTAGE:  
 181,593 SF  
 (65% EFFICIENCY)

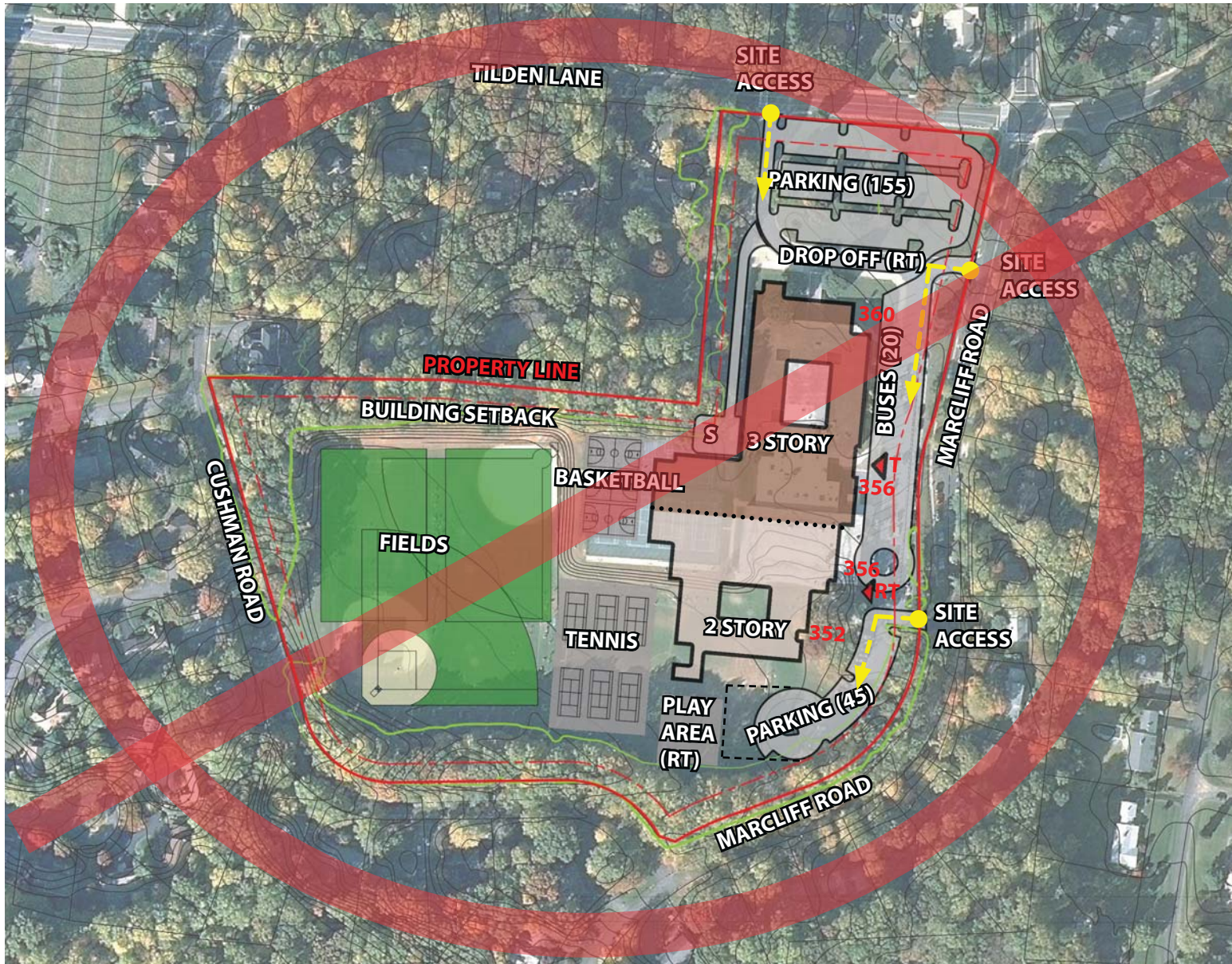


ROCK TERRANCE SCHOOL:  
 NET SQUARE FOOTAGE:  
 49,620 SF  
 GROSS SQUARE FOOTAGE:  
 76,338 SF  
 (65% EFFICIENCY)

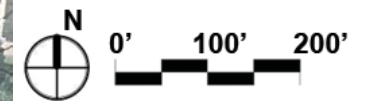


- CLASSROOMS
- CLASSROOM SUPPORT
- SCIENCE AND TECHNOLOGY
- SCIENCE AND TECH SUPPORT
- ARTS AND MUSIC
- ARTS AND MUSIC SUPPORT
- ACTIVITIES
- ACTIVITIES SUPPORT
- ADMINISTRATION
- SERVICES
- CIRCULATION

# 7. OPTION 1A - SITE PLAN



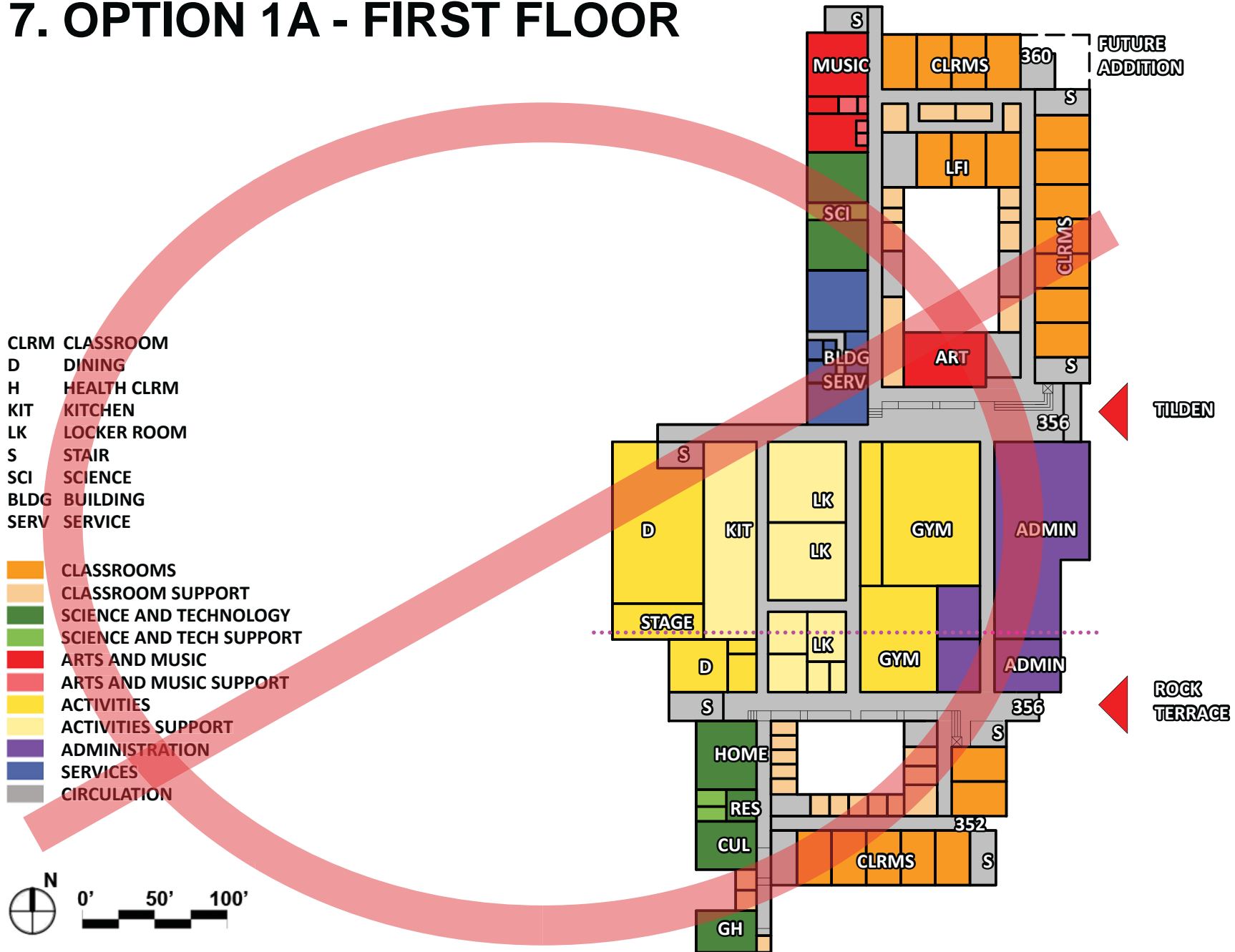
RT ROCK TERRACE SCHOOL  
 T TILDEN MIDDLE SCHOOL  
 S SERVICES AREA



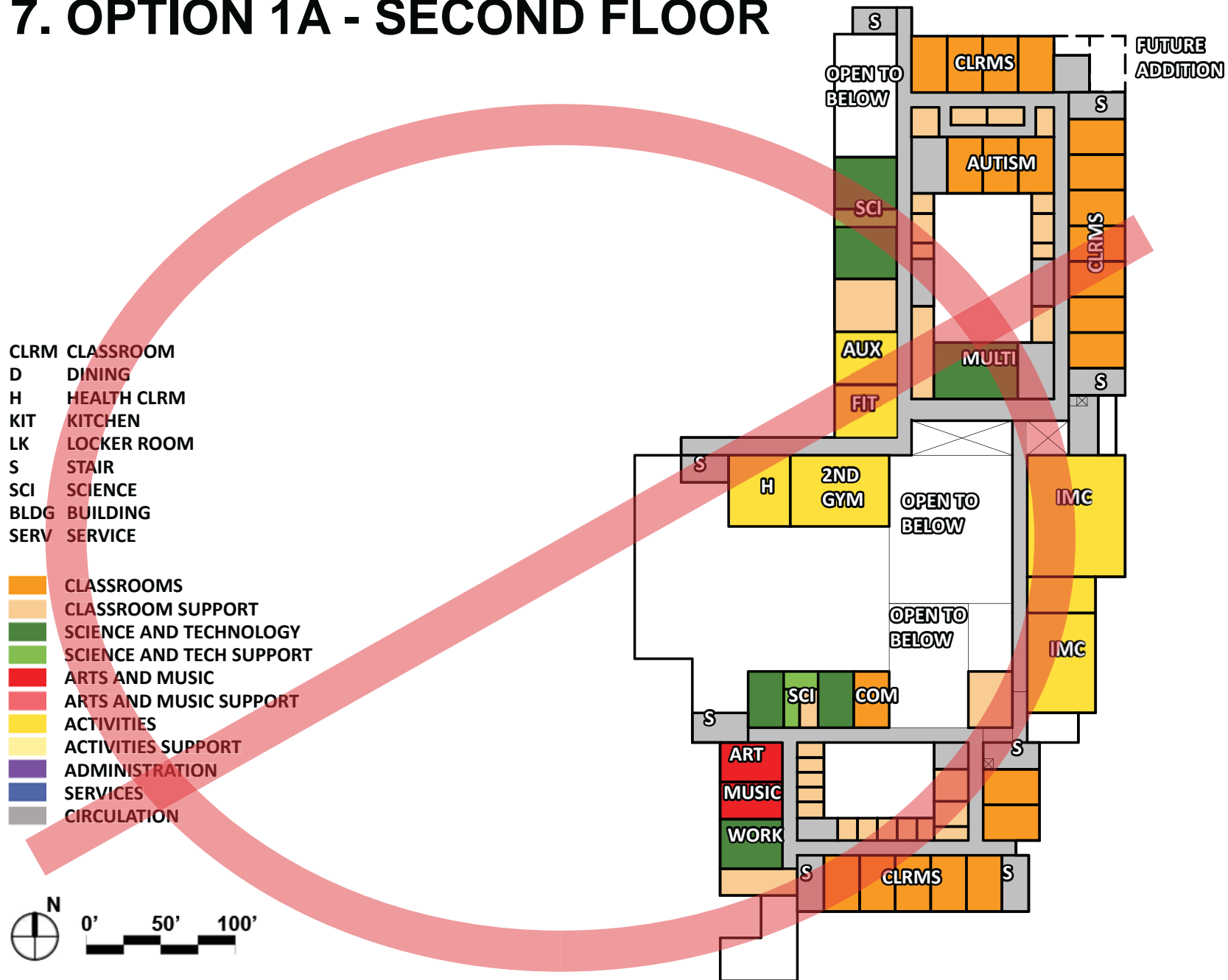




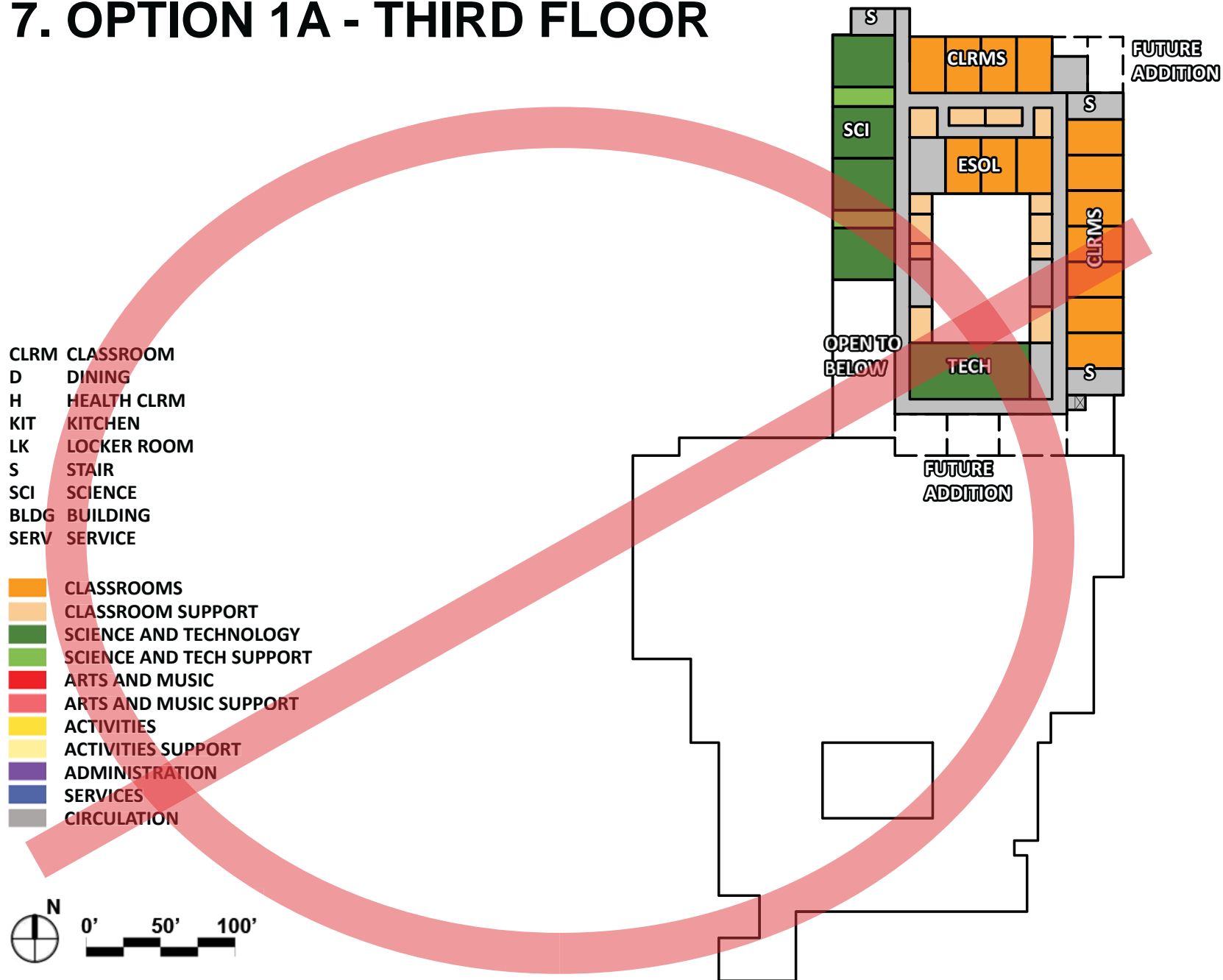
# 7. OPTION 1A - FIRST FLOOR



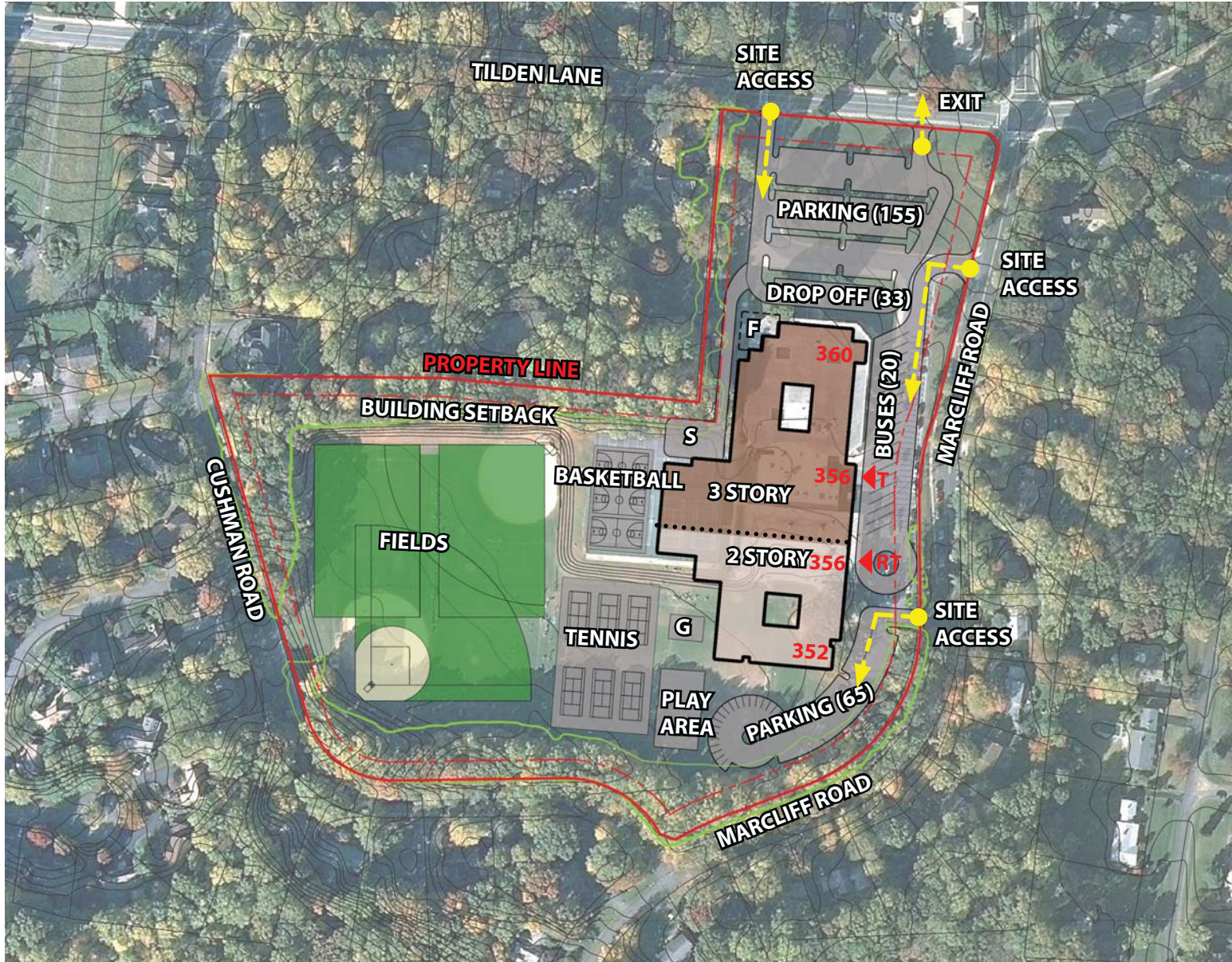
# 7. OPTION 1A - SECOND FLOOR



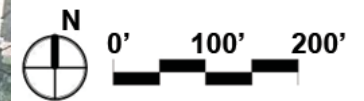
# 7. OPTION 1A - THIRD FLOOR



# 7. OPTION 1B - SITE PLAN

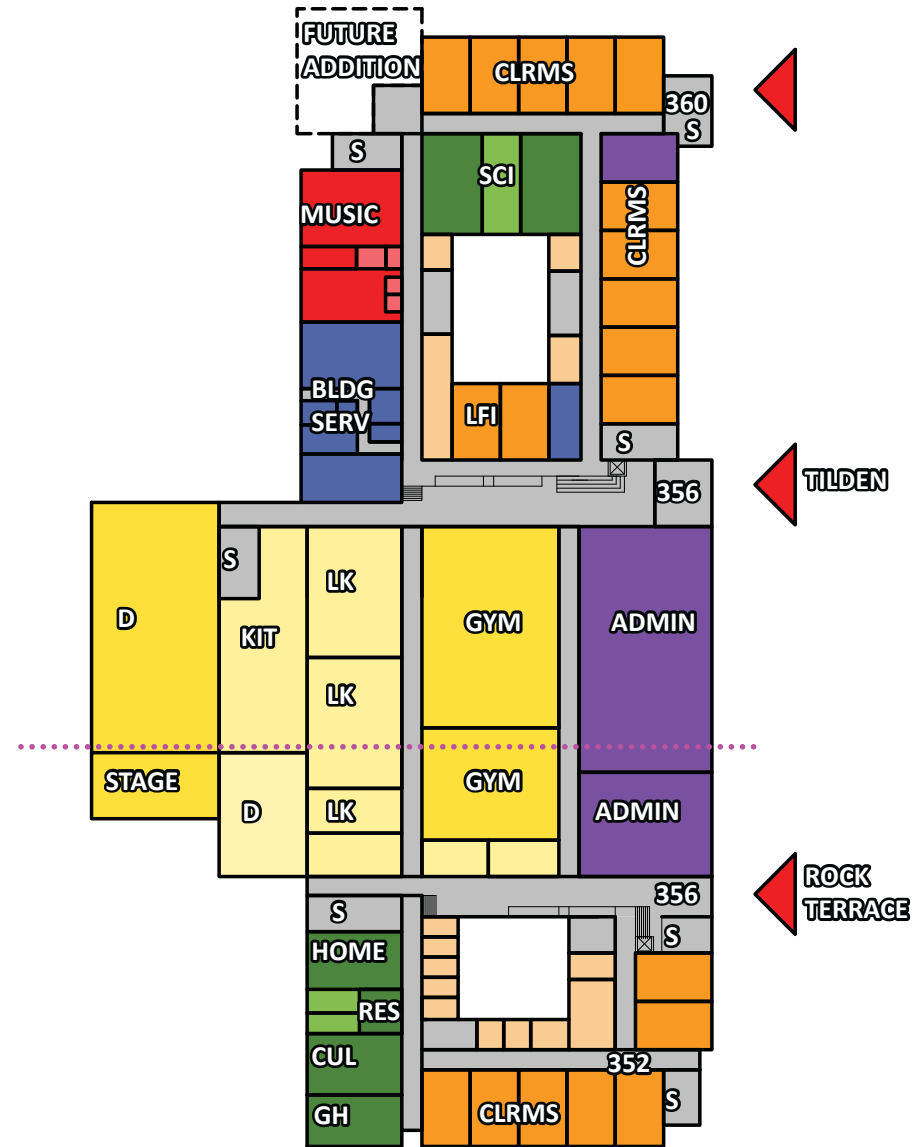
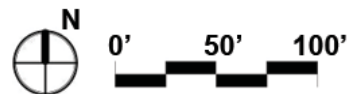


- RT ROCK TERRACE SCHOOL
- T TILDEN MIDDLE SCHOOL
- S SERVICES AREA
- G GARDEN
- F FUTURE ADDITION



# 7. OPTION 1B - FIRST FLOOR

- CLRM CLASSROOM
  - D DINING
  - H HEALTH CLRM
  - KIT KITCHEN
  - LK LOCKER ROOM
  - S STAIR
  - SCI SCIENCE
  - BLDG BUILDING
  - SERV SERVICE
- 
- CLASSROOMS
  - CLASSROOM SUPPORT
  - SCIENCE AND TECHNOLOGY
  - SCIENCE AND TECH SUPPORT
  - ARTS AND MUSIC
  - ARTS AND MUSIC SUPPORT
  - ACTIVITIES
  - ACTIVITIES SUPPORT
  - ADMINISTRATION
  - SERVICES
  - CIRCULATION

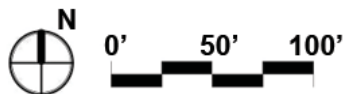
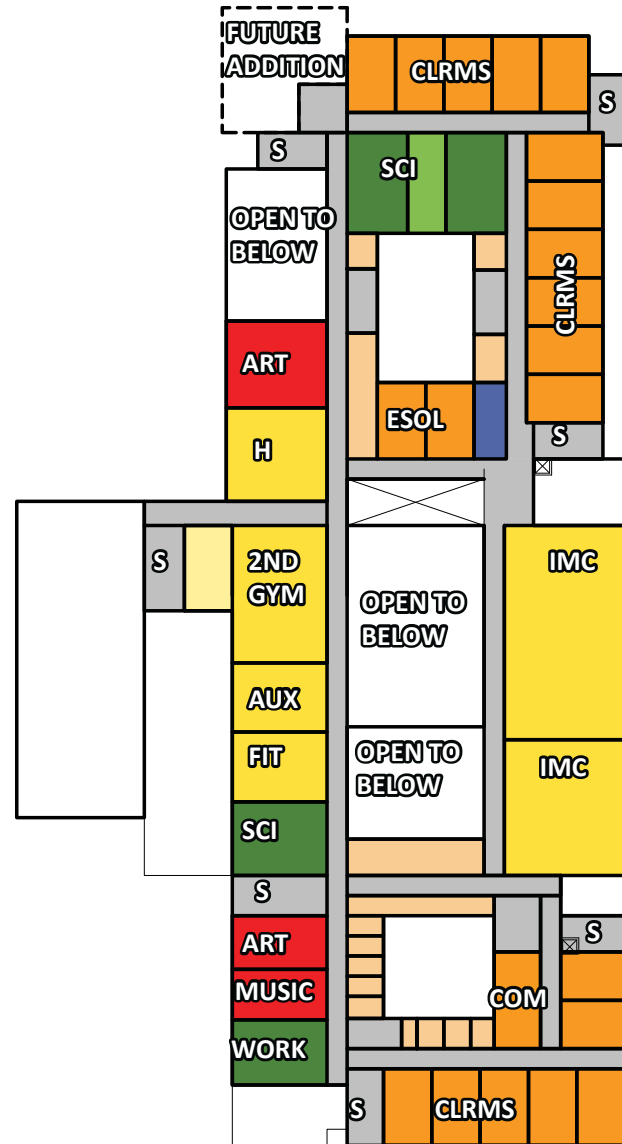




# 7. OPTION 1B - SECOND FLOOR

- CLRM CLASSROOM
- D DINING
- H HEALTH CLRM
- KIT KITCHEN
- LK LOCKER ROOM
- S STAIR
- SCI SCIENCE
- BLDG BUILDING
- SERV SERVICE

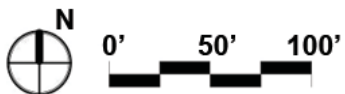
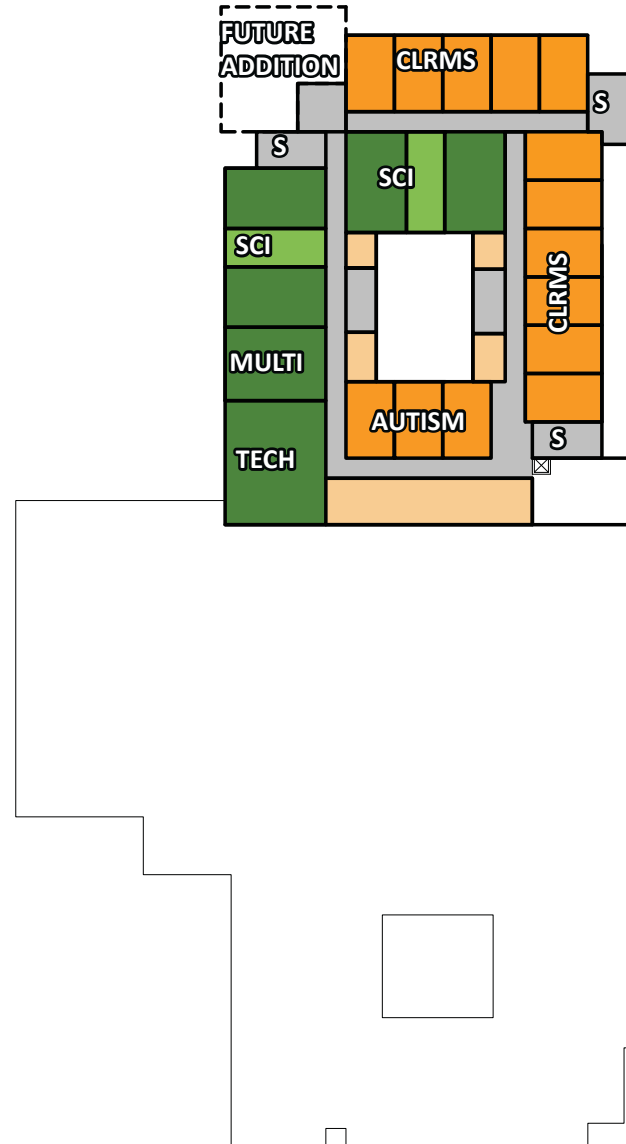
- CLASSROOMS
- CLASSROOM SUPPORT
- SCIENCE AND TECHNOLOGY
- SCIENCE AND TECH SUPPORT
- ARTS AND MUSIC
- ARTS AND MUSIC SUPPORT
- ACTIVITIES
- ACTIVITIES SUPPORT
- ADMINISTRATION
- SERVICES
- CIRCULATION



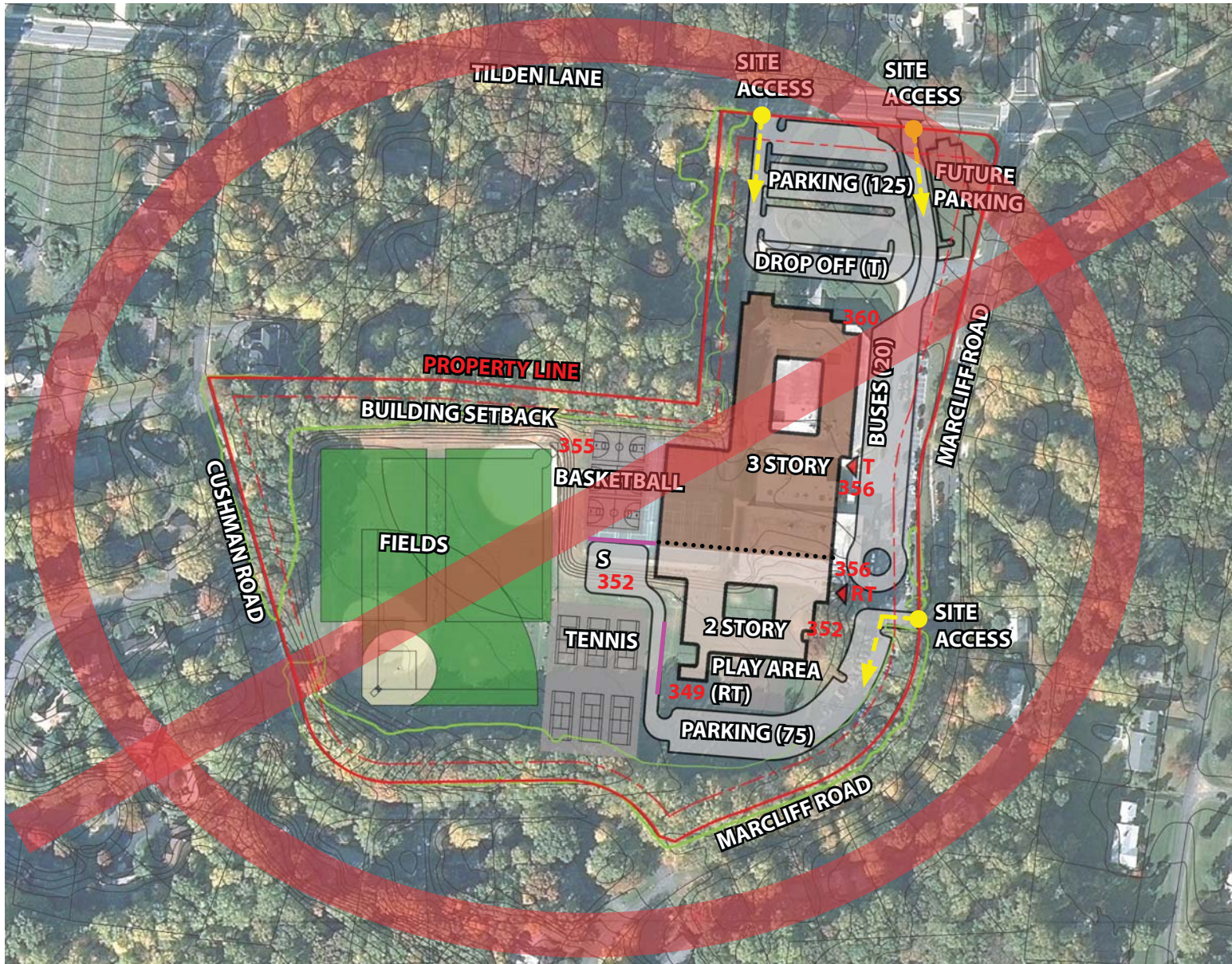
# 7. OPTION 1B - THIRD FLOOR

- CLRM CLASSROOM
- D DINING
- H HEALTH CLRM
- KIT KITCHEN
- LK LOCKER ROOM
- S STAIR
- SCI SCIENCE
- BLDG BUILDING
- SERV SERVICE

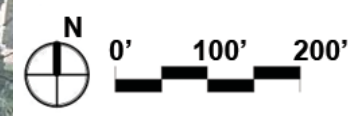
- CLASSROOMS
- CLASSROOM SUPPORT
- SCIENCE AND TECHNOLOGY
- SCIENCE AND TECH SUPPORT
- ARTS AND MUSIC
- ARTS AND MUSIC SUPPORT
- ACTIVITIES
- ACTIVITIES SUPPORT
- ADMINISTRATION
- SERVICES
- CIRCULATION



# 7. OPTION 2A - SITE PLAN



- RETAINING WALL
- RT ROCK TERRACE SCHOOL
- T TILDEN MIDDLE SCHOOL
- S SERVICES AREA





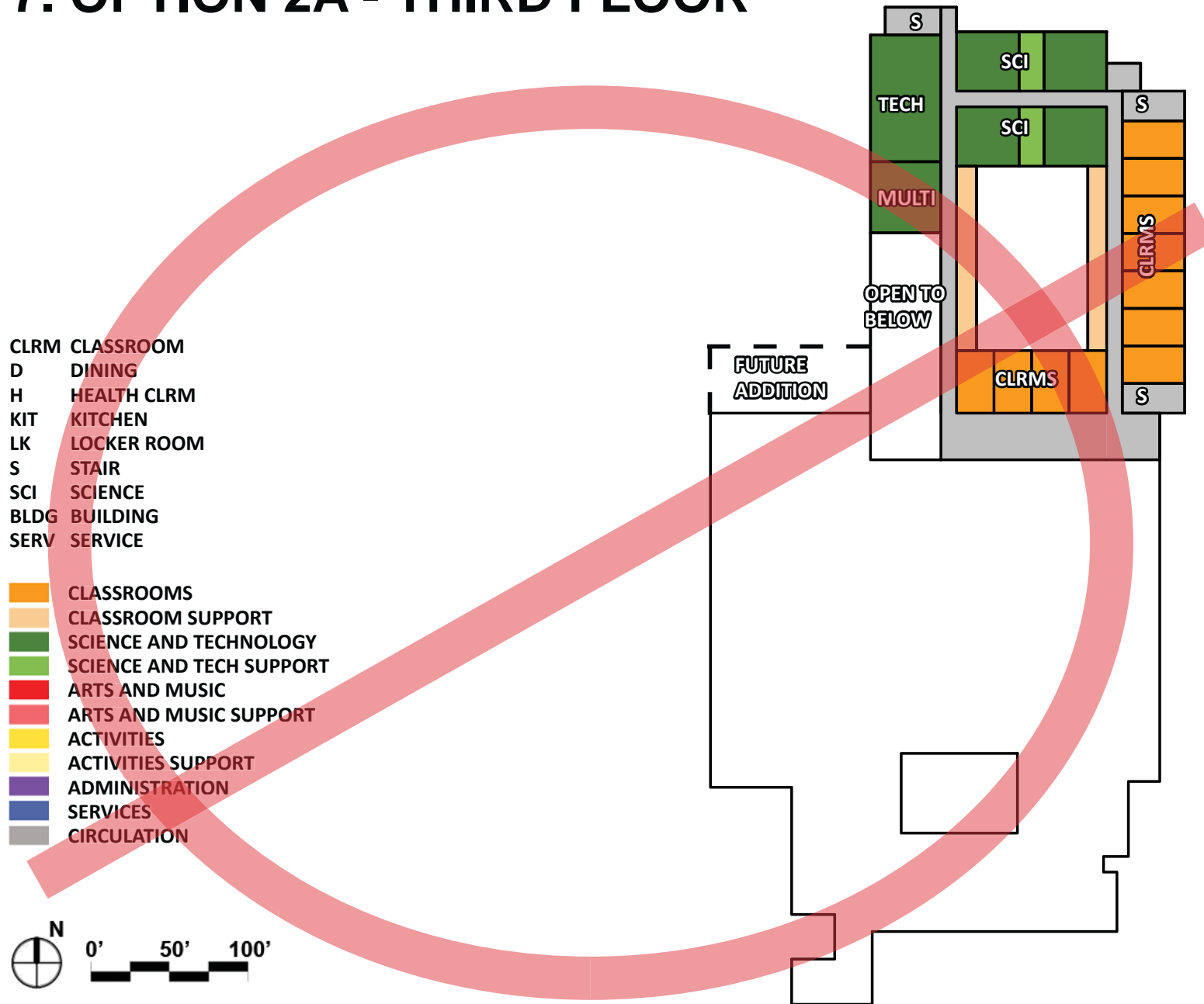
# 7. OPTION 2A - FIRST FLOOR



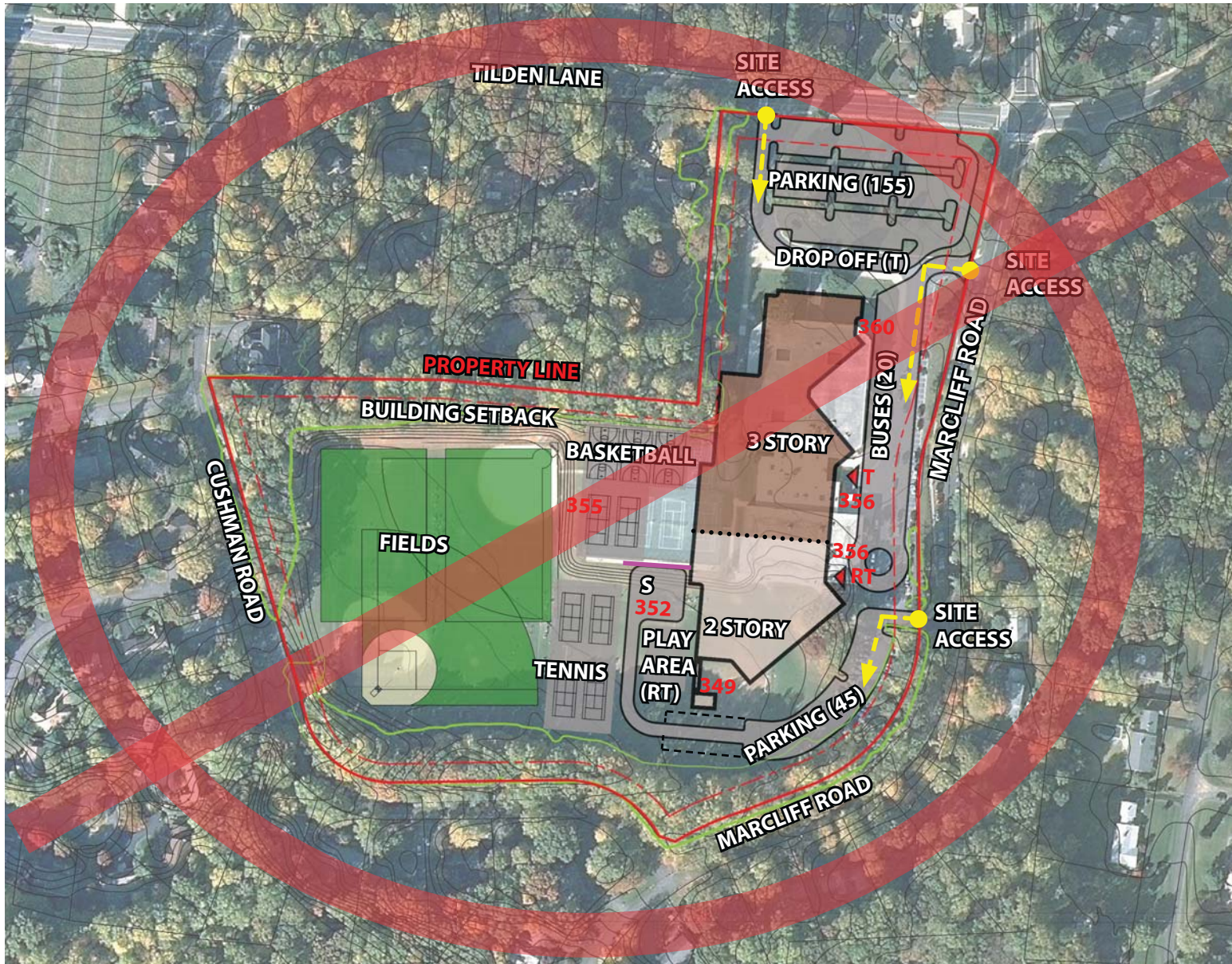
# 7. OPTION 2A - SECOND FLOOR



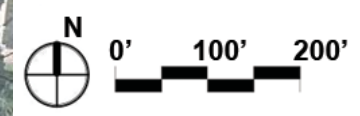
# 7. OPTION 2A - THIRD FLOOR



# 7. OPTION 3A - SITE PLAN



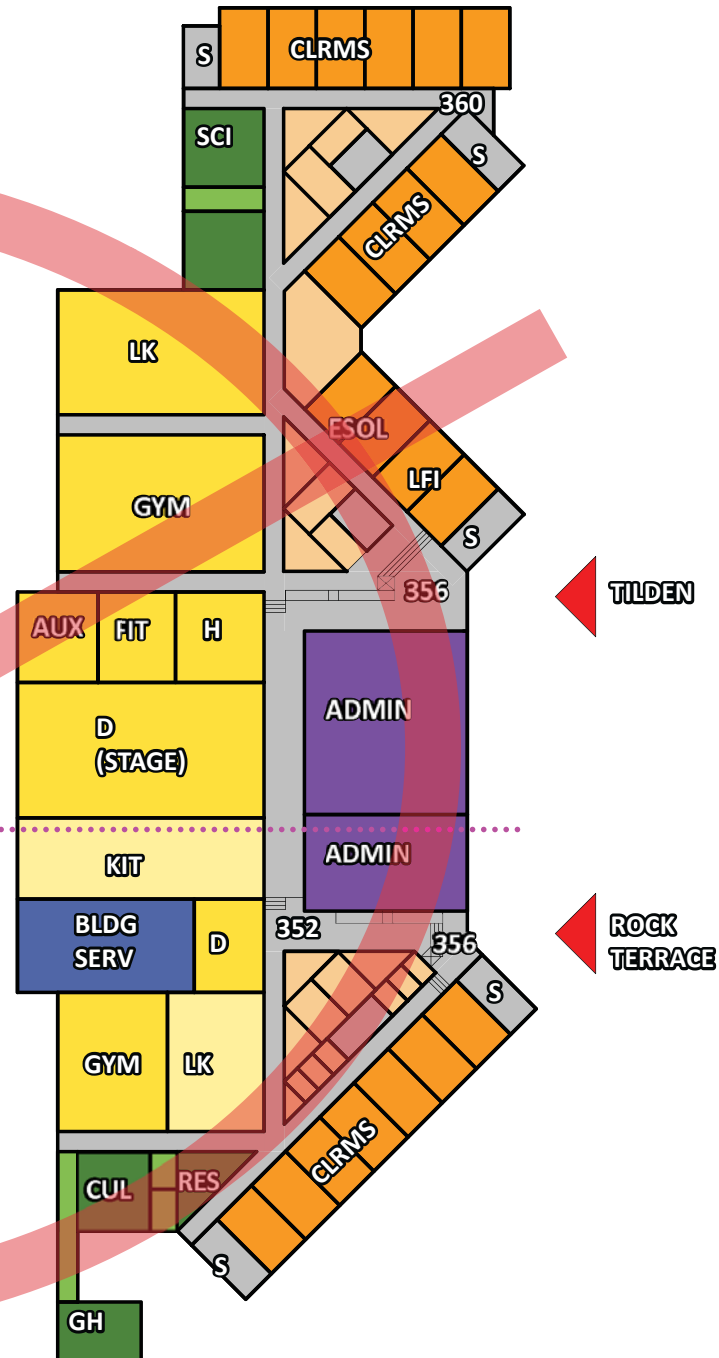
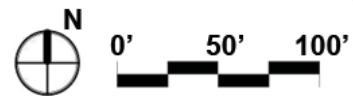
- RETAINING WALL
- RT ROCK TERRACE SCHOOL
- T TILDEN MIDDLE SCHOOL
- S SERVICES AREA



# 7. OPTION 3A - FIRST FLOOR

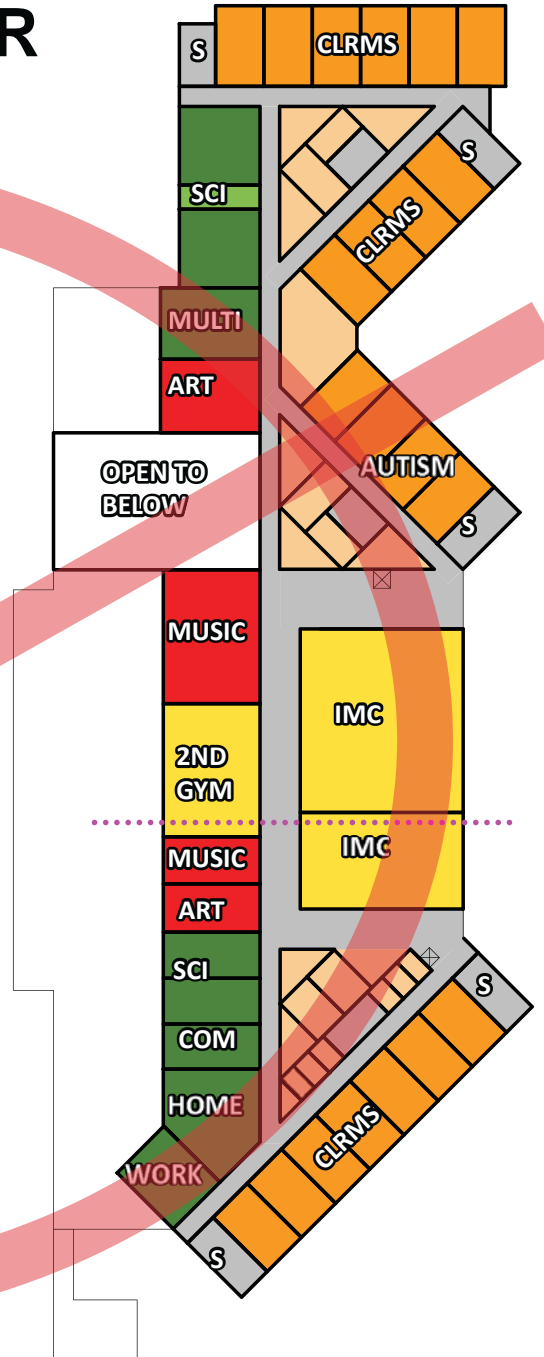
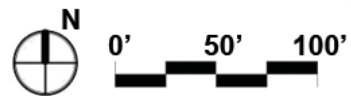
- CLRM CLASSROOM
- D DINING
- H HEALTH CLRM
- KIT KITCHEN
- LK LOCKER ROOM
- S STAIR
- SCI SCIENCE
- BLDG BUILDING
- SERV SERVICE

- CLASSROOMS
- CLASSROOM SUPPORT
- SCIENCE AND TECHNOLOGY
- SCIENCE AND TECH SUPPORT
- ARTS AND MUSIC
- ARTS AND MUSIC SUPPORT
- ACTIVITIES
- ACTIVITIES SUPPORT
- ADMINISTRATION
- SERVICES
- CIRCULATION

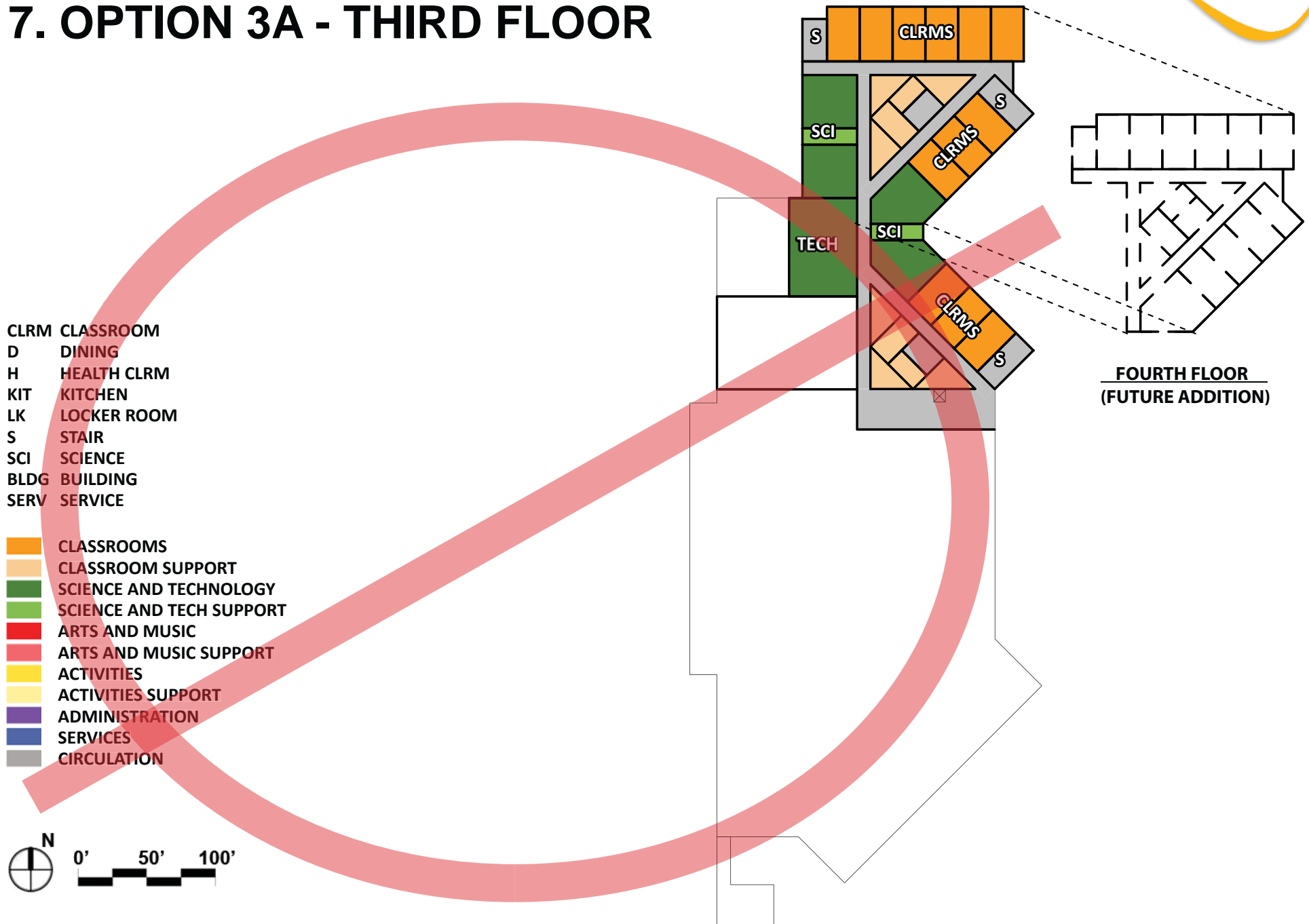


# 7. OPTION 3A - SECOND FLOOR

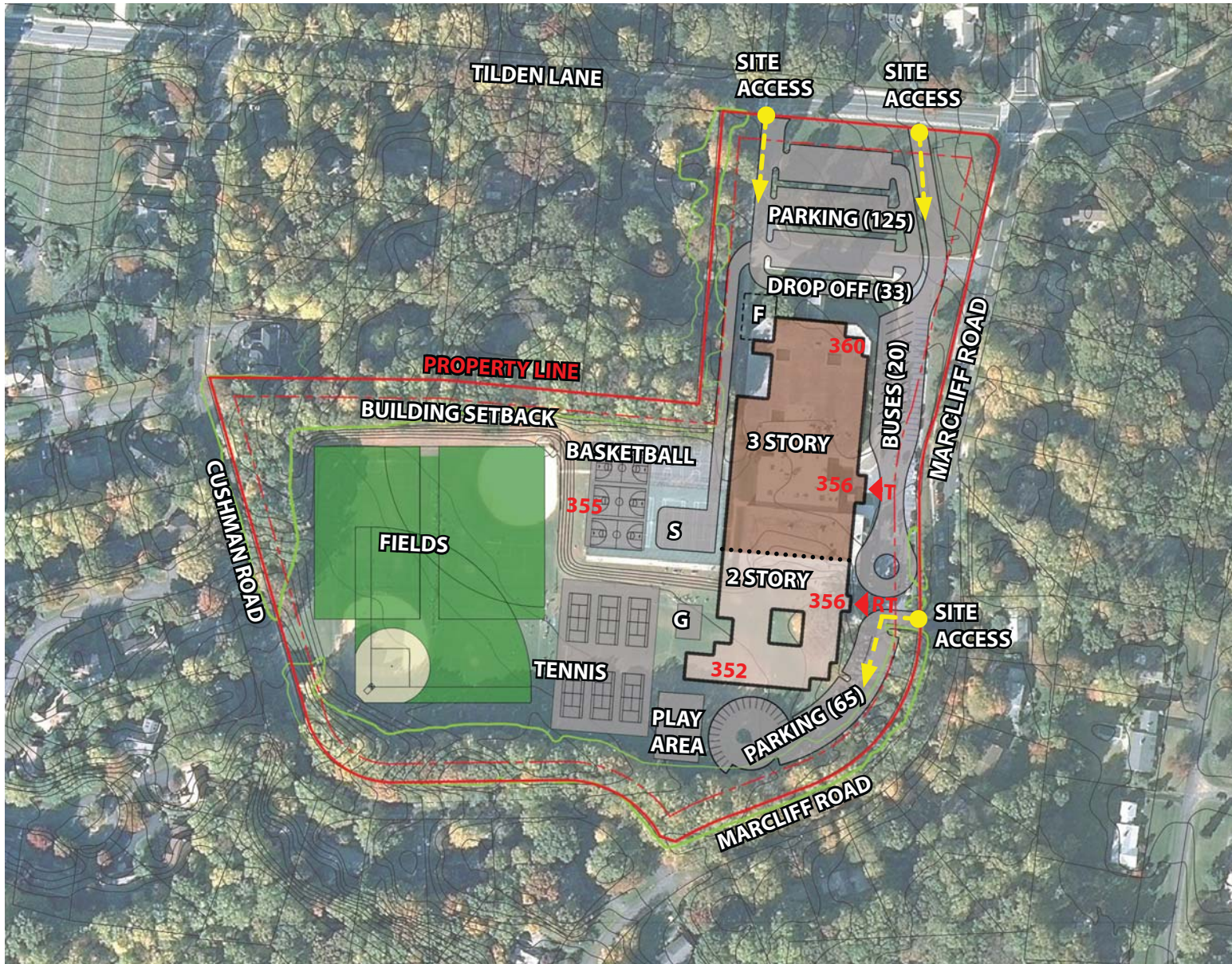
- CLRM CLASSROOM
  - D DINING
  - H HEALTH CLRM
  - KIT KITCHEN
  - LK LOCKER ROOM
  - S STAIR
  - SCI SCIENCE
  - BLDG BUILDING
  - SERV SERVICE
- 
- CLASSROOMS
  - CLASSROOM SUPPORT
  - SCIENCE AND TECHNOLOGY
  - SCIENCE AND TECH SUPPORT
  - ARTS AND MUSIC
  - ARTS AND MUSIC SUPPORT
  - ACTIVITIES
  - ACTIVITIES SUPPORT
  - ADMINISTRATION
  - SERVICES
  - CIRCULATION



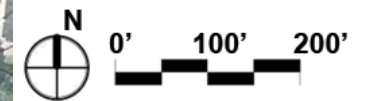
# 7. OPTION 3A - THIRD FLOOR



# 7. OPTION 4A - SITE PLAN



- RT ROCK TERRACE SCHOOL
- T TILDEN MIDDLE SCHOOL
- S SERVICES AREA
- G GARDEN
- F FUTURE ADDITION

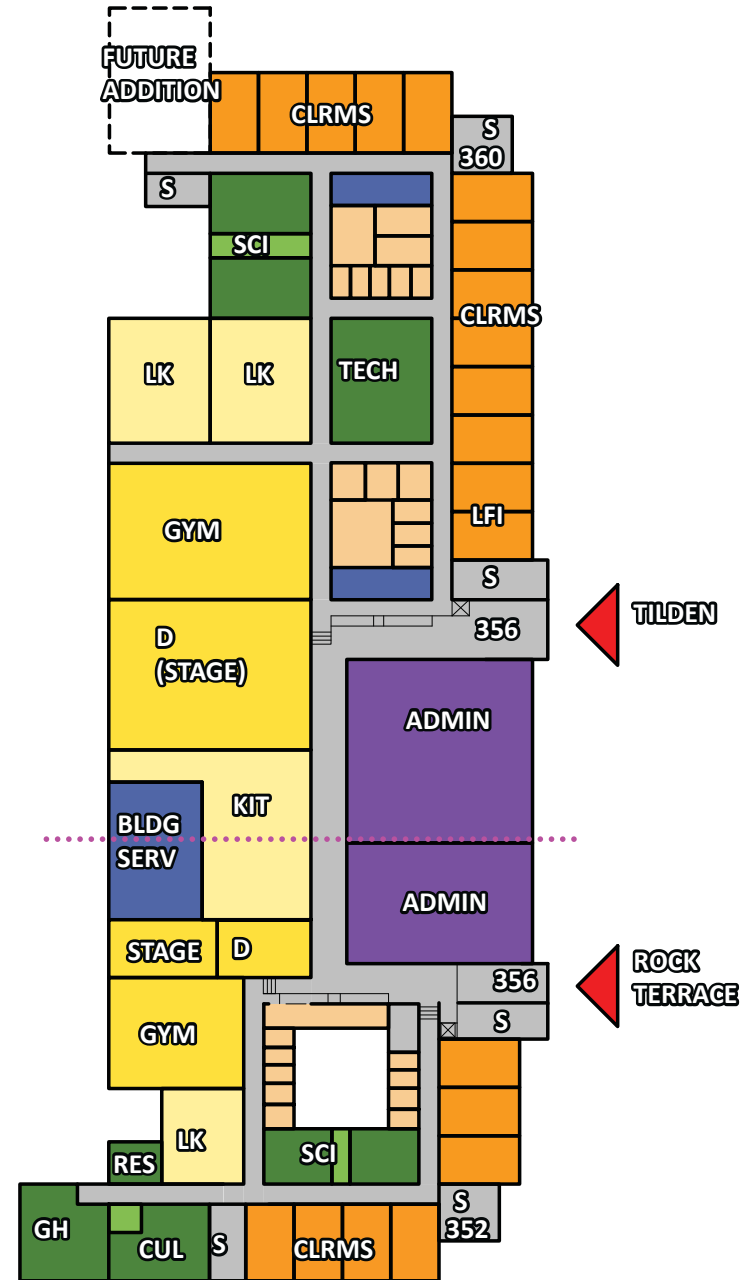
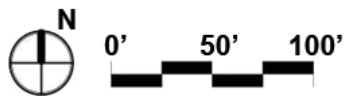




# 7. OPTION 4A - FIRST FLOOR

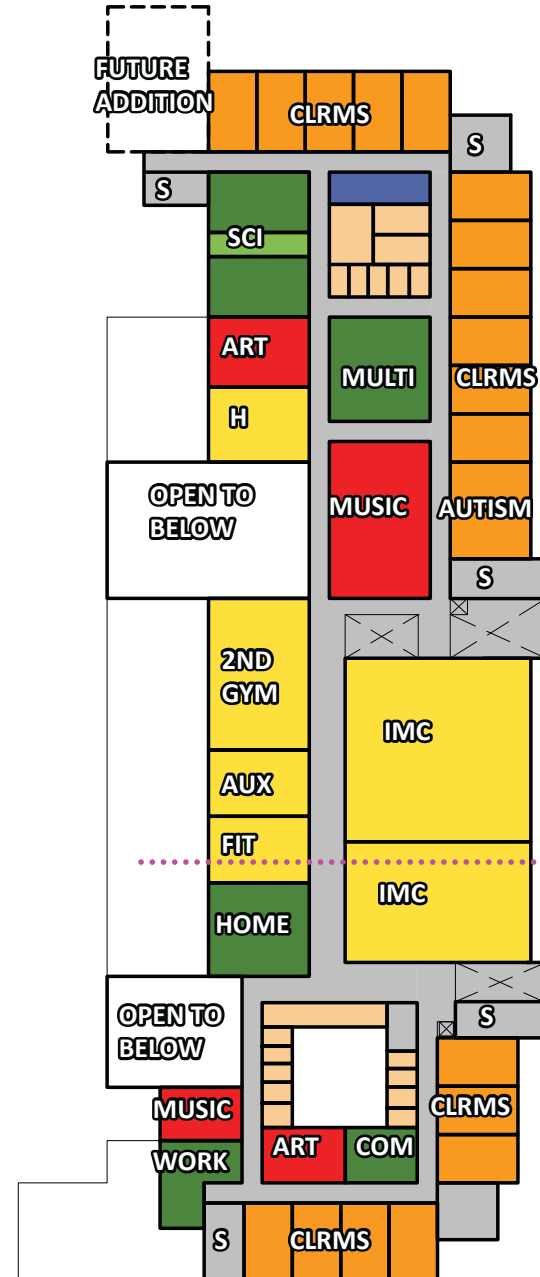
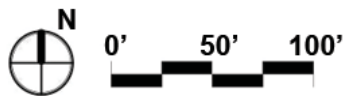
- CLRM CLASSROOM
- D DINING
- H HEALTH CLRM
- KIT KITCHEN
- LK LOCKER ROOM
- S STAIR
- SCI SCIENCE
- BLDG BUILDING
- SERV SERVICE

- CLASSROOMS
- CLASSROOM SUPPORT
- SCIENCE AND TECHNOLOGY
- SCIENCE AND TECH SUPPORT
- ARTS AND MUSIC
- ARTS AND MUSIC SUPPORT
- ACTIVITIES
- ACTIVITIES SUPPORT
- ADMINISTRATION
- SERVICES
- CIRCULATION



# 7. OPTION 4A - SECOND FLOOR

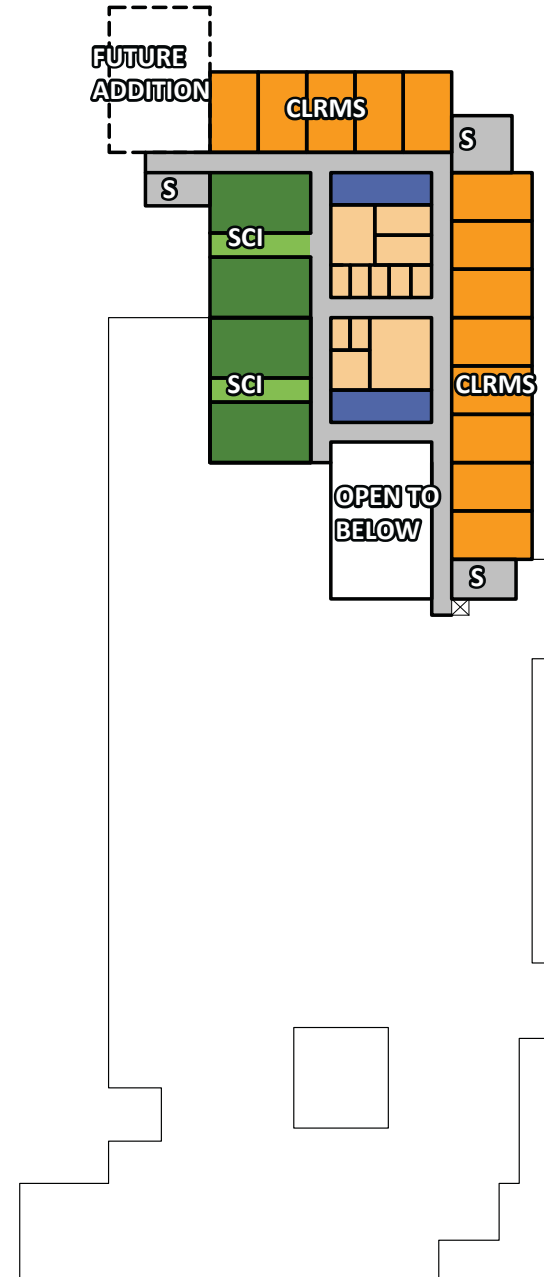
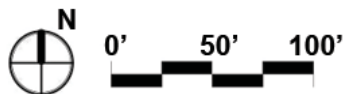
- CLRM CLASSROOM
  - D DINING
  - H HEALTH CLRM
  - KIT KITCHEN
  - LK LOCKER ROOM
  - S STAIR
  - SCI SCIENCE
  - BLDG BUILDING
  - SERV SERVICE
- 
- CLASSROOMS
  - CLASSROOM SUPPORT
  - SCIENCE AND TECHNOLOGY
  - SCIENCE AND TECH SUPPORT
  - ARTS AND MUSIC
  - ARTS AND MUSIC SUPPORT
  - ACTIVITIES
  - ACTIVITIES SUPPORT
  - ADMINISTRATION
  - SERVICES
  - CIRCULATION



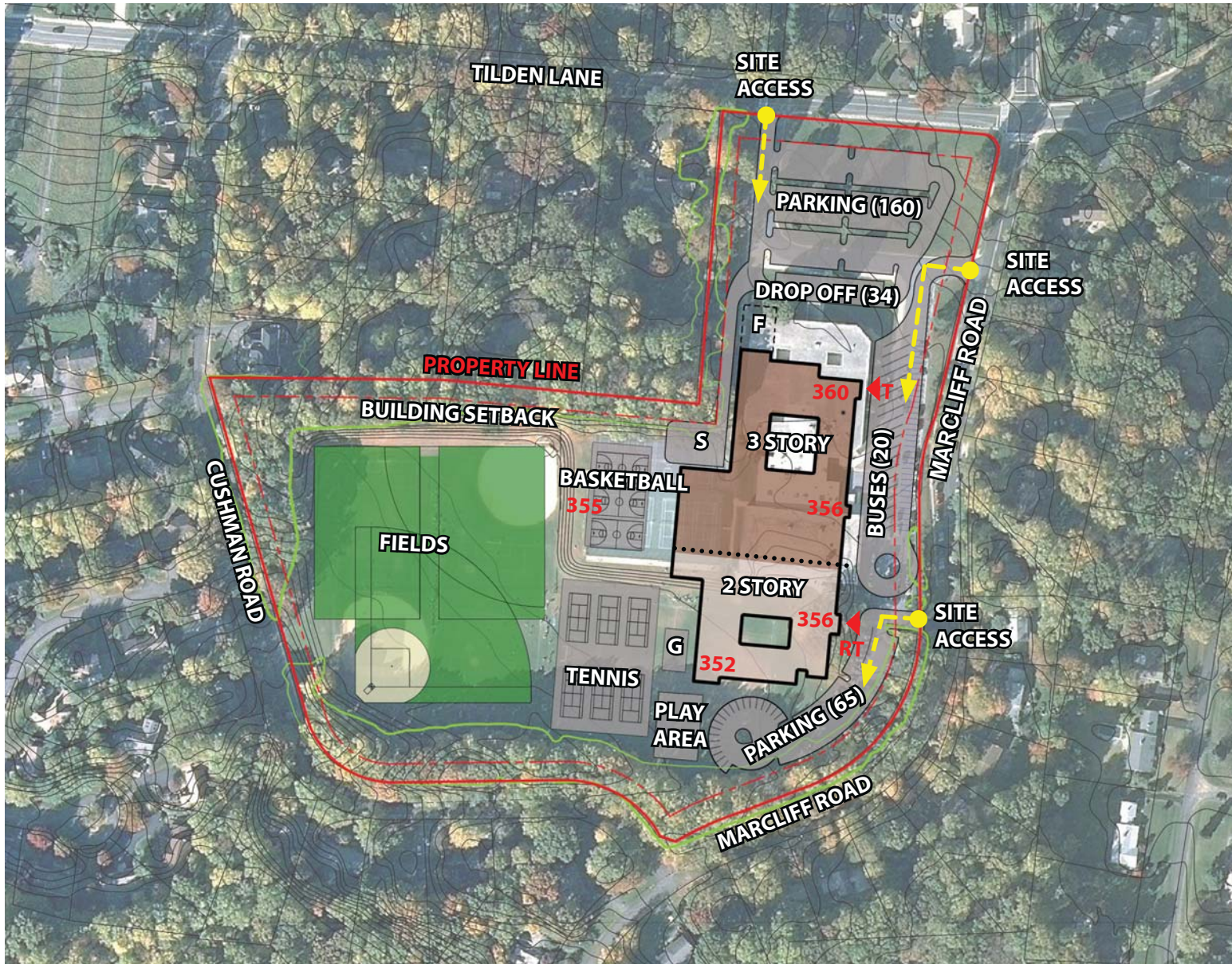
# 7. OPTION 4A - THIRD FLOOR

CLRM CLASSROOM  
 D DINING  
 H HEALTH CLRM  
 KIT KITCHEN  
 LK LOCKER ROOM  
 S STAIR  
 SCI SCIENCE  
 BLDG BUILDING  
 SERV SERVICE

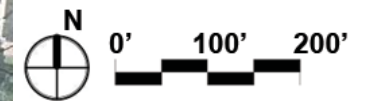
CLASSROOMS  
 CLASSROOM SUPPORT  
 SCIENCE AND TECHNOLOGY  
 SCIENCE AND TECH SUPPORT  
 ARTS AND MUSIC  
 ARTS AND MUSIC SUPPORT  
 ACTIVITIES  
 ACTIVITIES SUPPORT  
 ADMINISTRATION  
 SERVICES  
 CIRCULATION



# 7. OPTION 5A - SITE PLAN



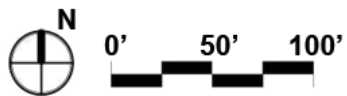
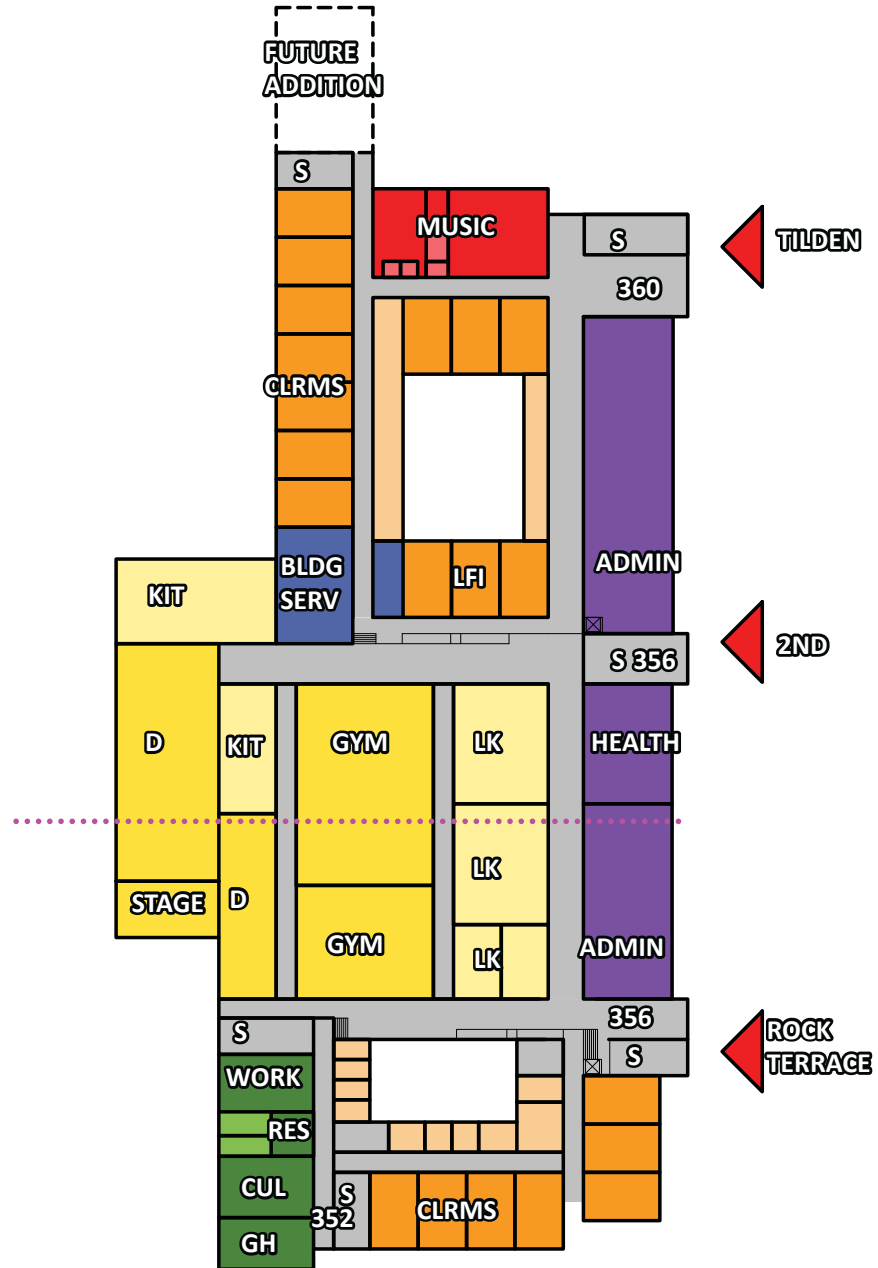
- RT ROCK TERRACE SCHOOL
- T TILDEN MIDDLE SCHOOL
- S SERVICES AREA
- G GARDEN
- F FUTURE ADDITION



# 7. OPTION 5A - FIRST FLOOR

- CLRM CLASSROOM
- D DINING
- H HEALTH CLRM
- KIT KITCHEN
- LK LOCKER ROOM
- S STAIR
- SCI SCIENCE
- BLDG BUILDING
- SERV SERVICE

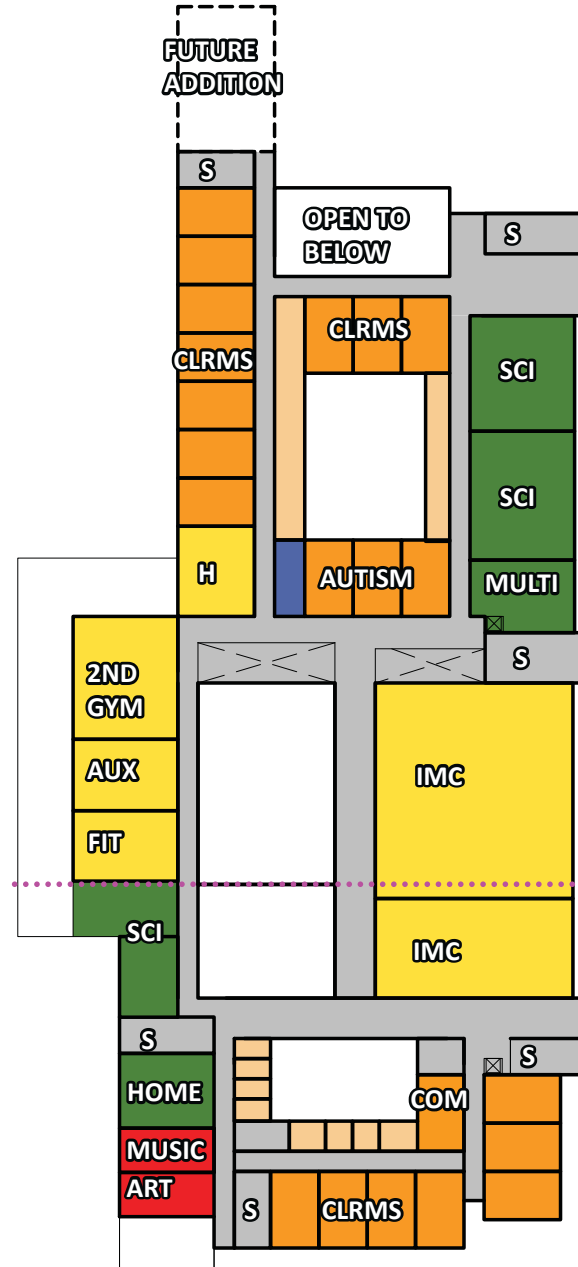
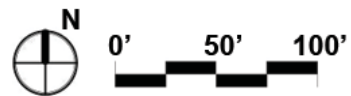
- CLASSROOMS
- CLASSROOM SUPPORT
- SCIENCE AND TECHNOLOGY
- SCIENCE AND TECH SUPPORT
- ARTS AND MUSIC
- ARTS AND MUSIC SUPPORT
- ACTIVITIES
- ACTIVITIES SUPPORT
- ADMINISTRATION
- SERVICES
- CIRCULATION



# 7. OPTION 5A - SECOND FLOOR

- CLRM CLASSROOM
- D DINING
- H HEALTH CLRM
- KIT KITCHEN
- LK LOCKER ROOM
- S STAIR
- SCI SCIENCE
- BLDG BUILDING
- SERV SERVICE

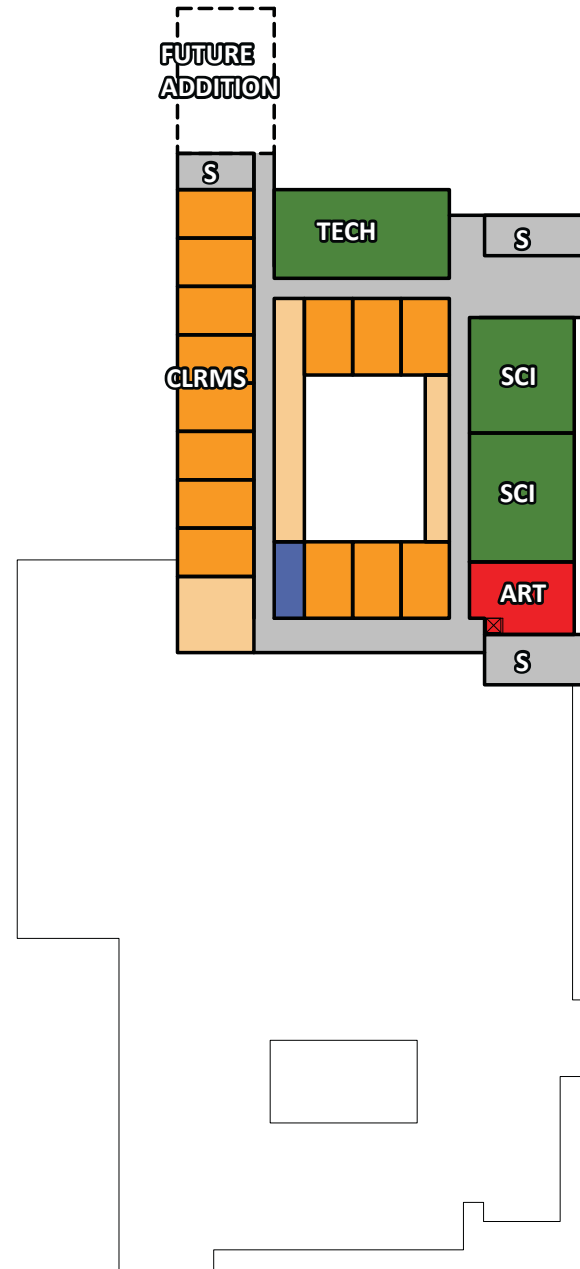
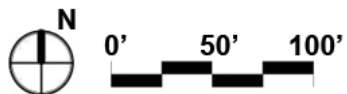
- CLASSROOMS
- CLASSROOM SUPPORT
- SCIENCE AND TECHNOLOGY
- SCIENCE AND TECH SUPPORT
- ARTS AND MUSIC
- ARTS AND MUSIC SUPPORT
- ACTIVITIES
- ACTIVITIES SUPPORT
- ADMINISTRATION
- SERVICES
- CIRCULATION



# 7. OPTION 5A - THIRD FLOOR

- CLRM CLASSROOM
- D DINING
- H HEALTH CLRM
- KIT KITCHEN
- LK LOCKER ROOM
- S STAIR
- SCI SCIENCE
- BLDG BUILDING
- SERV SERVICE

- CLASSROOMS
- CLASSROOM SUPPORT
- SCIENCE AND TECHNOLOGY
- SCIENCE AND TECH SUPPORT
- ARTS AND MUSIC
- ARTS AND MUSIC SUPPORT
- ACTIVITIES
- ACTIVITIES SUPPORT
- ADMINISTRATION
- SERVICES
- CIRCULATION





## 8. QUESTIONS

### Feasibility Study Work Session Schedule

<b>Work Session #1</b>	<b>Monday, October 19, 2015</b>	<b>7:00 pm</b>	<b>Tilden Holding Center</b>
<b>Work Session #2</b>	<b>Thursday, November 5, 2015</b>	<b>4:00 pm</b>	<b>Tilden Holding Center</b>
<b>Work Session #3</b>	<b>Wednesday, November 18, 2015</b>	<b>7:00 pm</b>	<b>Tilden Holding Center</b>
<b>Work Session #4</b>	<b>Tuesday, December 1, 2015</b>	<b>4:00 pm</b>	<b>Rock Terrace School</b>
<b>Work Session #5</b>	<b>Thursday, December 17, 2015</b>	<b>7:00 pm</b>	<b>Tilden Holding Center</b>
<b>Work Session #6 (Community Presentation)</b>	<b>Wednesday, January 6, 2016</b>	<b>7:00 pm</b>	<b>Tilden Holding Center</b>