

Does Your Young Child Have ADHD Symptoms?



NIMH RESEARCH STUDY

This research study seeks to understand brain development during childhood and brain changes over time. We are now recruiting children ages 4-14 with ADHD symptoms or an ADHD diagnosis.

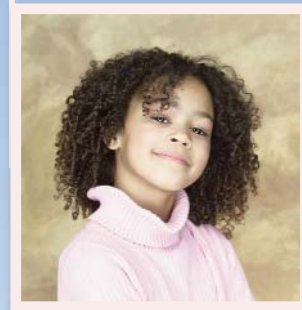
Your child may be eligible to participate in 1-2 outpatient visits to the NIH Clinical Center in Bethesda, Maryland. Participation includes an interview with parents and child, psychological testing, non-invasive brain scans, and genetic testing (from a saliva or blood sample.)

There is no cost to participate. Compensation is provided. Parental permission required.



Does Your Child...

- Get easily distracted
- Have trouble sitting still
- Talk excessively
- Have difficulty focusing
- Interrupt often



Please contact Wendy Sharp, LCSW-C:

301-496-0851 (TTY: 1-866-411-1010)

e-mail: sharpw@mail.nih.gov

<http://patientinfo.nimh.nih.gov> [Pediatric/ADHD]



Protocol: 89-M-0006

NIH Pediatric Study: ADHD
301-496-0851
e-mail: sharpw@mail.nih.gov
<http://patientinfo.nimh.nih.gov>

NIH Pediatric Study: ADHD
301-496-0851
e-mail: sharpw@mail.nih.gov
<http://patientinfo.nimh.nih.gov>

NIH Pediatric Study: ADHD
301-496-0851
e-mail: sharpw@mail.nih.gov
<http://patientinfo.nimh.nih.gov>

NIH Pediatric Study: ADHD
301-496-0851
e-mail: sharpw@mail.nih.gov
<http://patientinfo.nimh.nih.gov>

NIH Pediatric Study: ADHD
301-496-0851
e-mail: sharpw@mail.nih.gov
<http://patientinfo.nimh.nih.gov>

NIH Pediatric Study: ADHD
301-496-0851
e-mail: sharpw@mail.nih.gov
<http://patientinfo.nimh.nih.gov>

NIH Pediatric Study: ADHD
301-496-0851
e-mail: sharpw@mail.nih.gov
<http://patientinfo.nimh.nih.gov>

NIH Pediatric Study: ADHD
301-496-0851
e-mail: sharpw@mail.nih.gov
<http://patientinfo.nimh.nih.gov>

NIH Pediatric Study: ADHD
301-496-0851
e-mail: sharpw@mail.nih.gov
<http://patientinfo.nimh.nih.gov>

NIH Pediatric Study: ADHD
301-496-0851
e-mail: sharpw@mail.nih.gov
<http://patientinfo.nimh.nih.gov>