

How to Use a Mini-switch

Background:

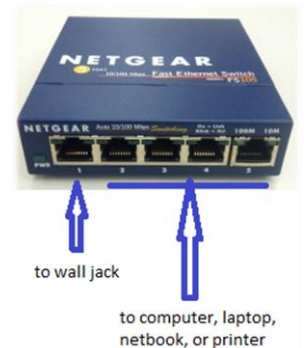
If you have multiple devices....but only one available computer network “jack” on the wall or floor....you can use a mini-switch to plug multiple devices into one jack.

The devices can be desktop computers, laptops, netbooks, or printers.

A mini-switch usually has either five “ports” (for network cables) or eight ports.

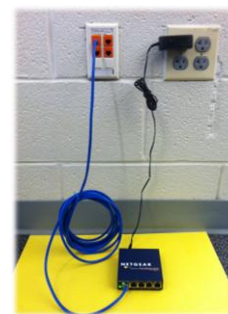
On any mini-switch, ONE port gets connected to the wall. The others are available for your devices.

(So a 5-port mini-switch can connect up to four devices. An 8-port can connect up to seven devices.)

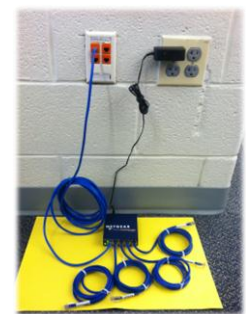


What to do:

1. Plug power cord into mini-switch & into the wall or power strip.
2. Plug ONE network cable into mini-switch, and into the wall jack.
3. Use remaining ports on the mini-switch for your other devices:
 - plug one end of a cable into the port
 - plug the other end of that cable into your computer, laptop, netbook, or printer



1 & 2 – power and ONE cable to wall



3 – plug other cables into your devices

Support:

1. For help connecting or using the mini-switch, please submit a Unicenter ticket for your ITSS.
2. If your ITSS believes the mini-switch has a hardware problem:
 - Mini-switches have a 5-year warranty.
 - Support and return info is at http://support.netgear.com/app/answers/detail/a_id/1162
 - In general, call 1-888-638-4327 to troubleshoot with the company by phone.
 - If it still does not work, the company may have you send it back for a replacement.

CAUTION – CAUTION – CAUTION!

Make sure only ONE port on the mini-switch connects to the wall.

If two or more ports on the same mini-switch connect to the wall, the network will “see” your devices communicating from two places....and get very, very confused!

The problems will affect not only your devices, but also the entire school network.