

ELMO-document camera set-up with a computer, LCD projector, and a Promethean board

• What do you need?

- AV or Base Computer
- Promethean board
- ELMO
- LCD Projector
- 2 additional RGB Cables
- USB Cable

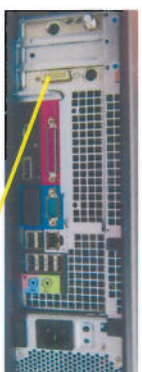


DRAFT August 2011

ELMO-document camera set-up

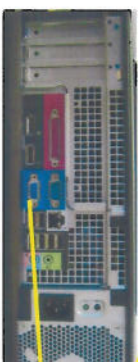
with a computer, LCD projector, and a Promethean board

AV/S-video Computer

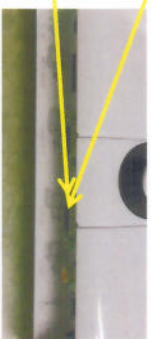


Connect from the computer to RGB-in on the ELMO using an RGB cable. If using an AV splitter connect to #2. Alternatively, you may need an DVI/RGB adapter.

Base Computer



ELMO

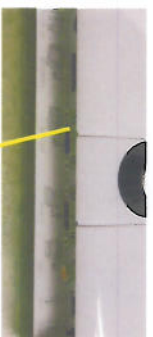


DRAFT August 2011

ELMO-document camera set-up

with a computer, LCD projector, and a Promethean board (cont)

ELMO



RGB cable from Promethean board



Connect from RGB-out on the ELMO to the Promethean Board.

DRAFT August 2011

ELMO-document camera set-up

with a computer, LCD projector, and a Promethean board (cont)

ELMO



Computer



DRAFT August 2011

Connect the USB cable from the ELMO to the computer. Once the USB connection is made, a Hardware Wizard will appear. Accept the default settings. Click Next and Finish. The Hardware Wizard needs to be done for the Image Mate software to recognize the ELMO. The wizard will run using the Local Admin login or your AD login. You will use your PC and camera buttons on your elmo to toggle between displaying the computer image and elmo image. On the computer, open the School Menu (Programs). Navigate to the Windows Accessories folder and open the Resolution folder. Choose Display Duplicate as your resolution. This will allow the user to select to display either the elmo image or the computer image on the screen.