

*Using Assessments To Guide
Instruction*

Stonegate Elementary

PTA Curricular Workshop

March 1, 2010



MRS. RANDOLPH TAKES MOTHER'S PRIDE TOO FAR...

M-CLASS

- Students in grades K, 1, and 2 participate in the M-Class Primary Reading Assessment.
- It is administered at regular intervals over the course of the school year (fall, winter, and spring).
- The assessment includes two parts, Foundational Reading Skills (Phonemic Awareness, Letter Identification, Concepts of Print, and Reading Word Lists) and the Running Record portion.



Measures of Academic Progress in Reading (MAP-R)

- The MAP-R is one tool that teachers of grades 3, 4, and 5 use to diagnose and monitor reading achievement of students.
- MAP-R results help to identify skills and concepts students have learned and help to diagnose instructional needs.
- It is administered at regular intervals over the course of the school year (fall, winter, and spring).



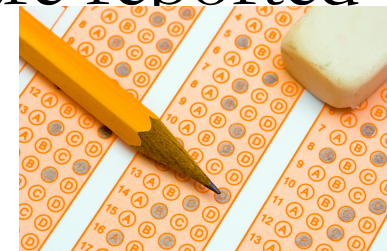
Measures of Academic Progress in Reading (MAP-R)

- Grade level teams use this data to find out whether an individual student, or an entire grade level, is making satisfactory progress in the basic reading skill areas.
- MAP-R tests are administered to individual students via the computer.
- That data is calculated on the spot, and results are available to teachers and students almost instantaneously.
- There is a strong correlation between performance on MAP-R and proficiency on the Maryland School Assessment (MSA).



Terra NOVA-2/TN2

- MCPS uses results of this test as an indicator of how students in Grade 2 are achieving basic skills in reading, language arts, and mathematics as compared to the nation.
- Students in Grade 2 take the TN2 in the spring.
- Grade 2 individual student scores are reported to parents.



Maryland School Assessment (MSA)

- In response to requirements of No Child Left Behind (NCLB) federal mandates, the MSA provides national norm-referenced and Maryland criterion-referenced data.
- The norm-referenced items provide national percentile ranks to describe how well a student performed in reading and mathematics compared to his/her peers nationally.



Maryland School Assessment (MSA)

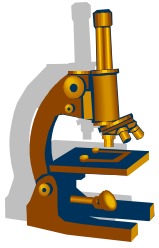
- The criterion-referenced items provide proficiency scores (expressed as Basic, Proficient, or Advanced proficiency level) to describe how well a student has mastered the reading and mathematics content specified in the Maryland Content Standards.
- Schools receive individual student data and data by subgroups. Data is used to determine school improvement goals and areas for growth.
- Parents receive individual student data.



ALT-MSA

- Serves as an alternate to MSA for special education students on the Fundamental Life Skills curriculum.
- It is administered to students in grades 3-8 and 10.
- It is a performance based assessment where students are assessed through a portfolio and videotaped tasks.
- Proficiency levels are reported as Basic, Proficient and Advanced.





Science MSA

- The assessment is administered to students in fifth grade throughout the state.
- It describes how well a student has mastered the reading and mathematics content specified in the Maryland Content Standards.
- It is offered as an online assessment or as a paper-pencil assessment. Students at Stonegate will take it as a paper-pencil task.

InView



- InView is a cognitive abilities assessment offered by CTB/McGraw-Hill and is used in the Grade 2 Global Screening for gifted and talented recognition.
- It measures the full range of verbal, nonverbal, and quantitative skills that are important to academic success.
- InView provides highly reliable academic aptitude scores and test scores for placement decisions in Gifted & Talented programs.
- It allows schools compare achievement levels of students of the same age, grade, and cognitive ability.

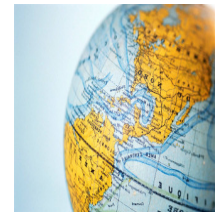
RAVEN

- Raven's Progressive Matrices is often referred to simply as Raven's Matrices, or The Raven.
- It is a multiple choice test of abstract reasoning, originally developed by Dr John C. Raven in 1936.
- In each test item, the student is asked to identify the missing segment required to complete a larger pattern.
- It is used as a part of the Grade 2 Global Screening for gifted and talented recognition.



Language Assessment Links (LAS Links)

- LAS Links is the state-mandated test of English language proficiency administered to grade K – 12 ESOL students annually each spring.
- LAS Links results are used to demonstrate the progress MCPS and Maryland State ESOL students are making towards proficiency in English.
- Assessment results are used by ELL Teams to help make decisions as to each student's participation in the ESOL program, and are shared with parents.



Strategies for Success



- Talk to your child about the upcoming standardized tests. Explain that it is important to give his/her best effort.
- The night before a test, make sure your child gets a good night's sleep followed by a healthy breakfast the next morning.
- Help your child arrive at school on time the day of the test so they do not feel hurried to begin the routines of the day.
- Maintain a positive attitude.

Questions?

Please use the post-it notes provided to record any questions. Questions will be answered in the next issue of The Splash.

