

There are three
basic types of
fingerprints

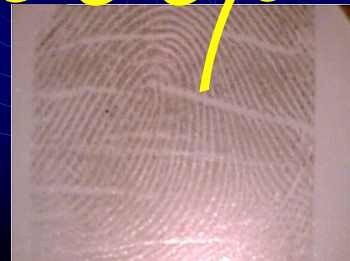
whorl



arch



loop



I know it's an Arch because it is
like a hill starting from one side
and stopping on the other.

This is an arch fingerprint because
it has hill shapes on it.



This fingerprint is an arch. The arch is a shape that starts on one side, and ends on the other side, like a hill. The other kinds of fingerprints are whorl, and loop, but sometimes they're mixed.



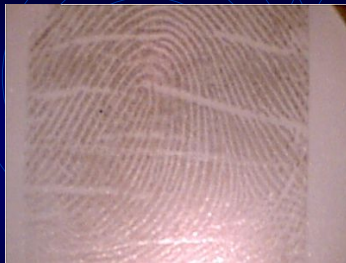
I know that this fingerprint is an Arch because if you look closely you could see that the picture looks like hills .



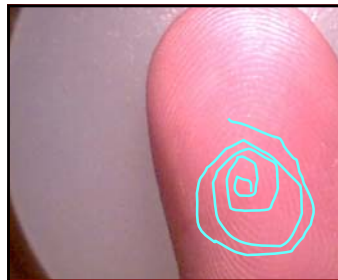
This is a loop. It starts on one side and goes around to end on the same side. You can find out what kind of fingerprint it is by looking at the middle of the fingerprint and seeing the kind of lines that appear.



This fingerprint is called loop because each line starts on one side and returns to that side.



This is a loop. I know this because a loop looks like a jump rope turned up side down. There are two other kinds of fingerprints, those are whorl and arch ,whorl looks like a whirl pool. Arch looks like a hill side.



This is a whorl. It looks like a pebble thrown in the water.



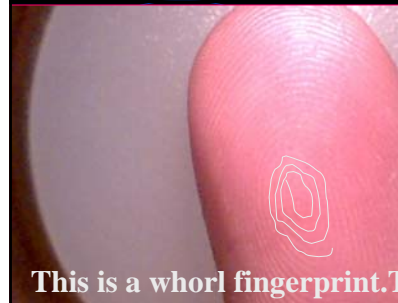
The whorl is one of the four fingerprints. If you look at it it looks like a whirl pool.



This is a whorl . A whorl looks like a whirlpool. A whorl is a fingerprint (left).



This is a whorl. It looks like a tornado when you are flying over it.

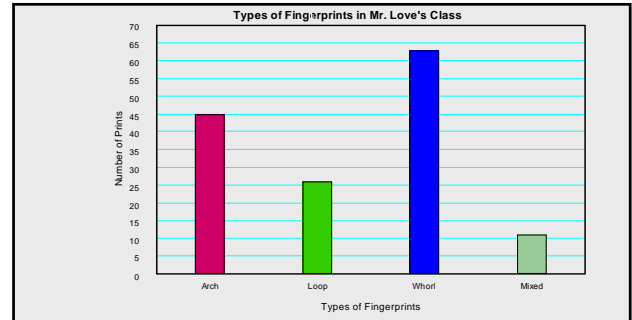
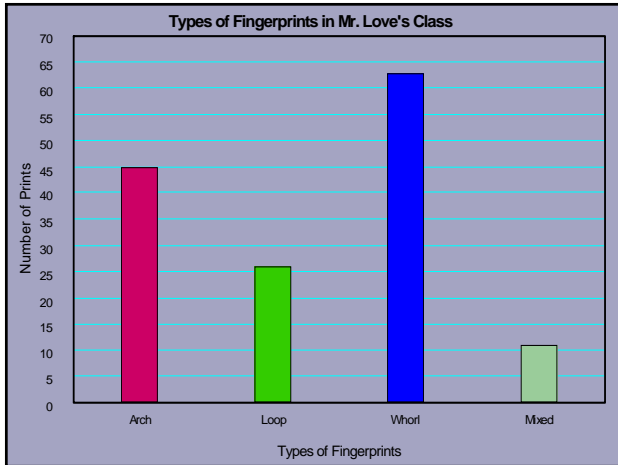


This is a whorl fingerprint. The whorl is a swirly line that starts in the middle and keeps getting bigger. Identifying fingerprints helps the police catch criminals.



This is a whorl. A whorl is like a whirlpool. Also it looks like a bunch of circles in each other. Also it looks like a tornado.

We graphed our class fingerprint data.



I know that all of them together make 126 because, I know that Loop, and Arch make 92, and I know that Whorl, and Mixed make 34 because $26+8=34$ so $34+92=126$.