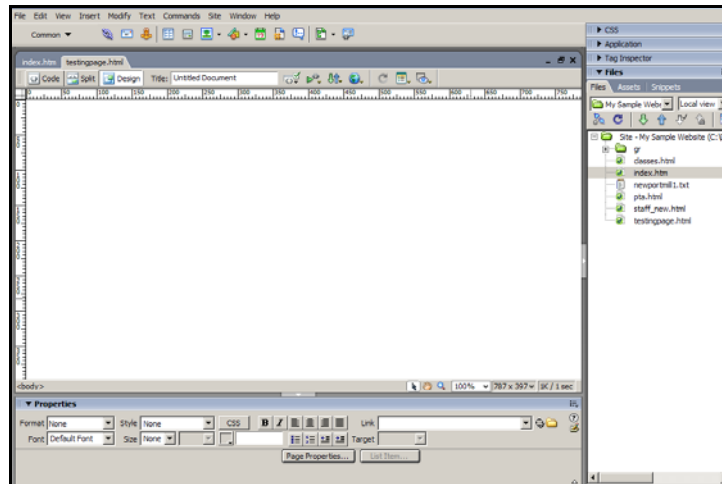


Overview : The Dreamweaver Interface

The User Interface:

Dreamweaver is a powerful web authoring and editing tool. As such, it has both more features, and a steeper learning curve than programs like FrontPage. You do not need to understand all features to make good use of the software.



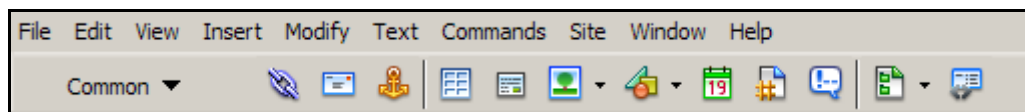
Dreamweaver workspace layout

The Menu Area

The Dreamweaver **Menu** provides access to every function within the application. For example, the **Text menu** provides access to added tools, panels, and functions. Many features in the **Text menu** are also found on the **Insert Bar** or in **tool panels**.

The Tool Bar Area

Each icon on the **Common toolbar** provides access the most commonly used tools. To see a different set of tools (Layout, Form, Text, etc...), you will need to click on the pull down arrow next to **Common** and select the tool you wish to see.



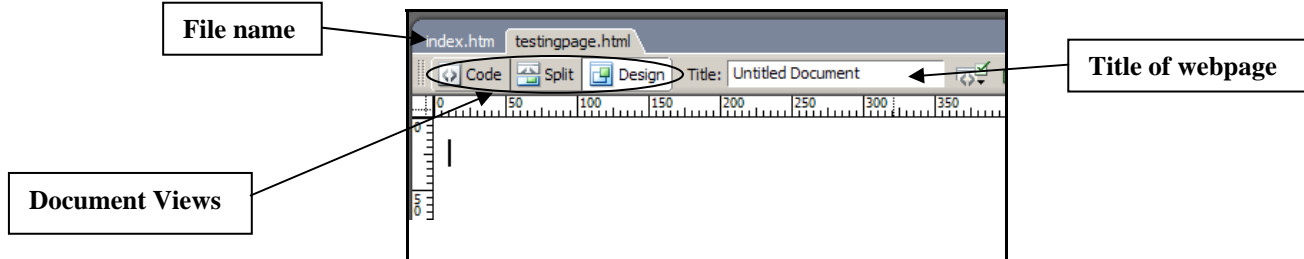
↑ ↑ ↑ ↑ ↑ ↑
hyperlink | email | anchor | table | layer | image

The Document Window(Canvas) Area

The **Document Window or Canvas Area** is the plain white screen in the middle of the application. This is where you will do most of your work during development.

Below the **tool bar** area and above the Document Window (canvas) is where you can:

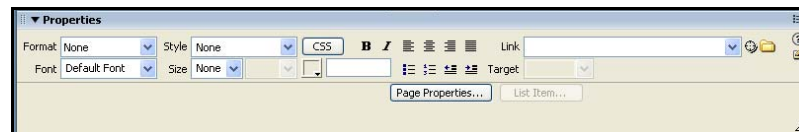
- view the files names and to click from one page to another(index.html, testingpage.html)
- switch between **Code (html) view**, **Design** or **Split View** as shown below
- add title to your page (Untitled Document). The tile will display on the top blue bar of the web browser.



Search engine such as Google will use your title to reference your page or website.

The Properties panel

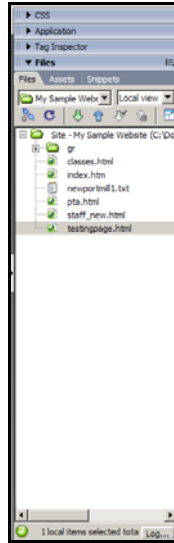
The **Properties panel** provides information and tools for objects in the edit window. These options or properties will change, depending on the selected object in the Document Window (Canvas).






Properties inspector

Panels

Panels are tools and additional functionality sets that appear on the right side of the workspace.



Files Panel

- Additional panels are found in the **Windows** text menu.
- Panels can be combined to appear as tabs on other panels. Click  and choose “Group panel with”.
- They can be closed using the “triangle”. 
- Panels can be dragged  out of or around the side menu.
- Tabs at the bottom of the workspace, allow you to move from page to page.

