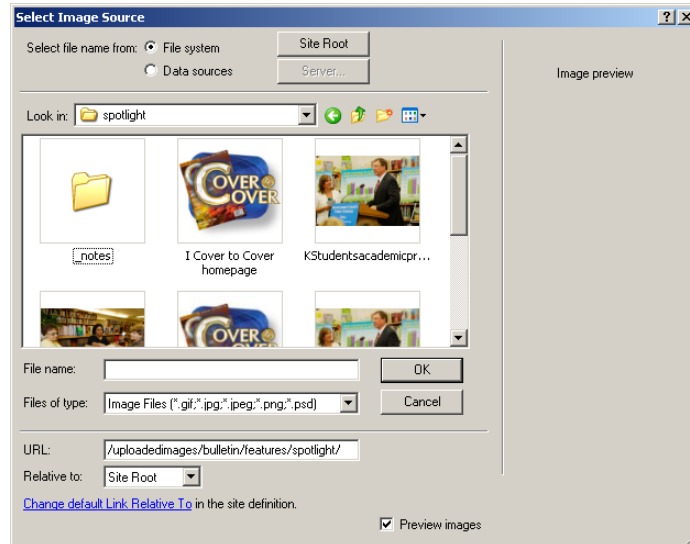


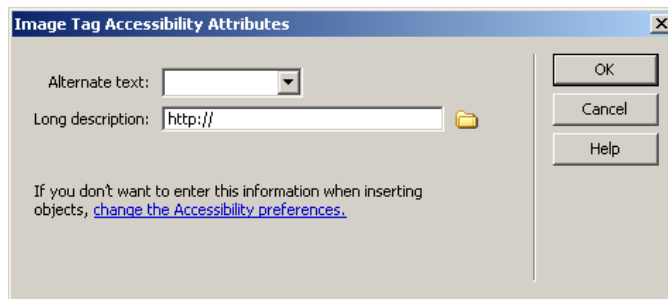
## Working with Pictures in Dreamweaver

1. Click **Insert** and select the **Image** option from the list. The **Select Image Source** window opens.



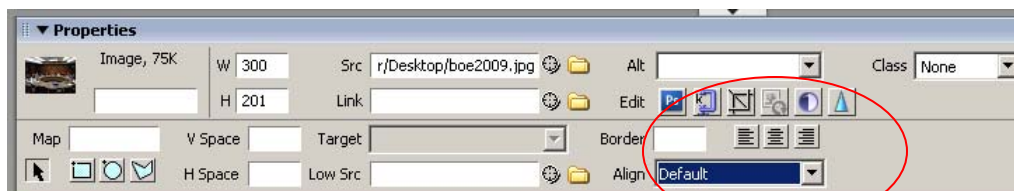
*Select Image Source window*

2. Select the image from the appropriate folder. Click the **OK** button.
3. In the Alternate Text box, enter a description for the image. The screen reader reads the information you enter here. Click **OK**.



*Image Tag window*

4. To change your photo properties, use the Properties box. You can add a border and select alignment.



*Properties window*

## Creating a Photo Album in Dreamweaver

### ► To Create a Photo Album in Dreamweaver

5. Create a folder for your photo album (e.g. **album**)
6. Open any page within the site or web pages
7. Choose **Commands/Create Web Photo Album** from the toolbar
8. Give the album a title (this will show in the thumbnail page only)
9. You can enter subheading info if you like (this will show in the pages with the enlarged pictures)
10. Choose the Source images folder by using the folder icon to browse to the relevant folder (this will be the folder where you have stored all the images)
11. Choose the destination folder (from our example '**album**')
12. Choose the thumbnail size from the drop-down menu
13. You can enter the number of columns you would like to display the thumbnails
14. The rest can be left as is or changed according to your requirements for optimization
15. Click on OK
16. You will see Fireworks creating the thumbnails for all the pictures
17. Once this is done, you will receive a message saying that the photo album has been created and you can view the album.

The album will now be in its simple unformatted state. You will have a folder called **album** under which there will be a webpage called **index.htm** page which will have all the thumbnails with links to the larger images as well as 3 folders:

- thumbnails - contains the thumbnails
- images - contains the images in its original form
- pages - contains the pages in which the larger images are inserted along with the navigation to navigate between pictures and go back to home

