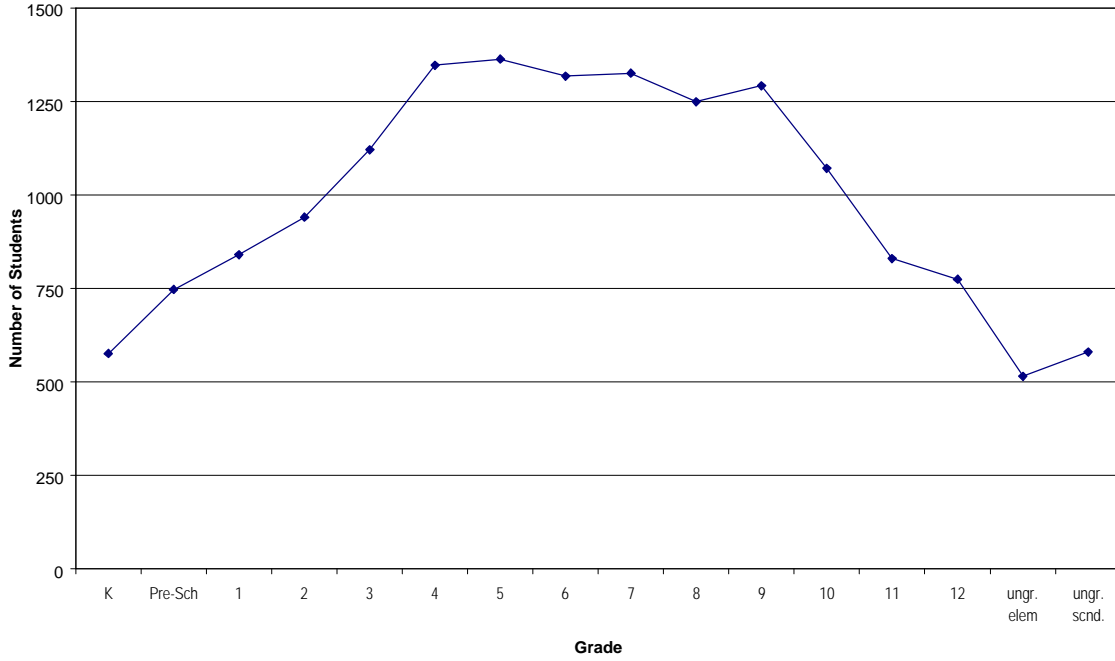
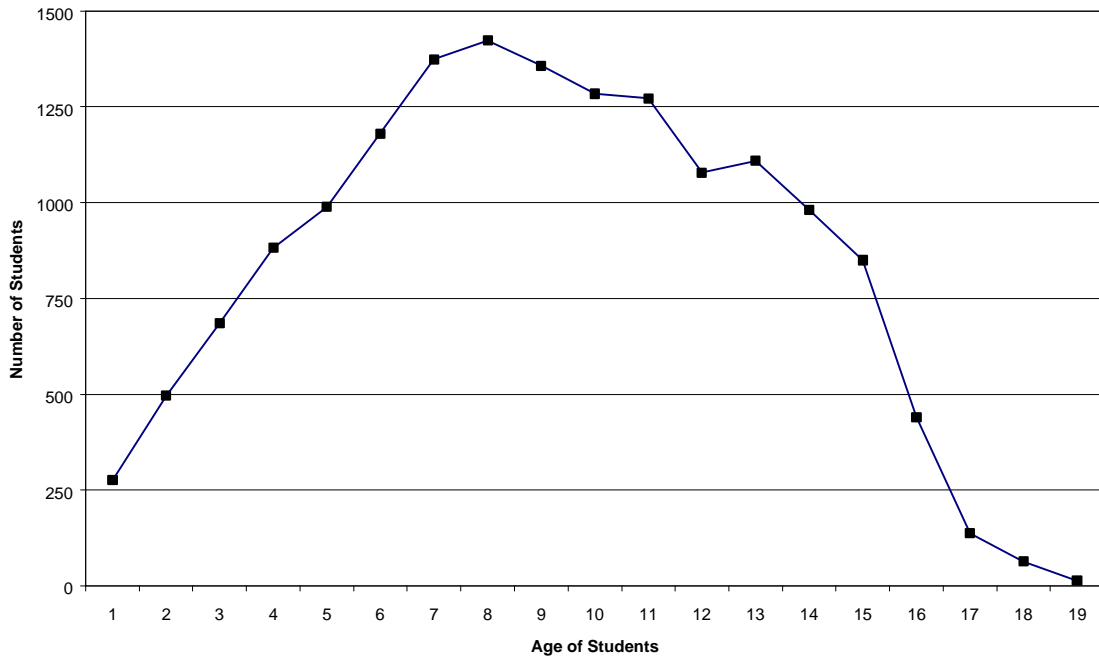


# Attachment D

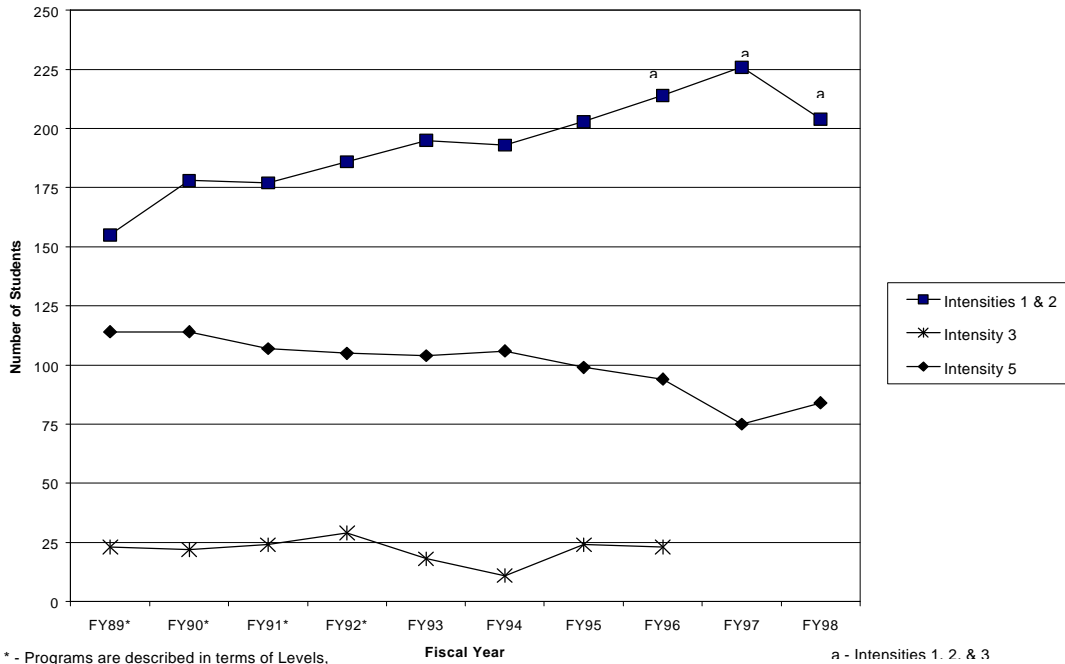
## MCPS Special Education Population By Grade



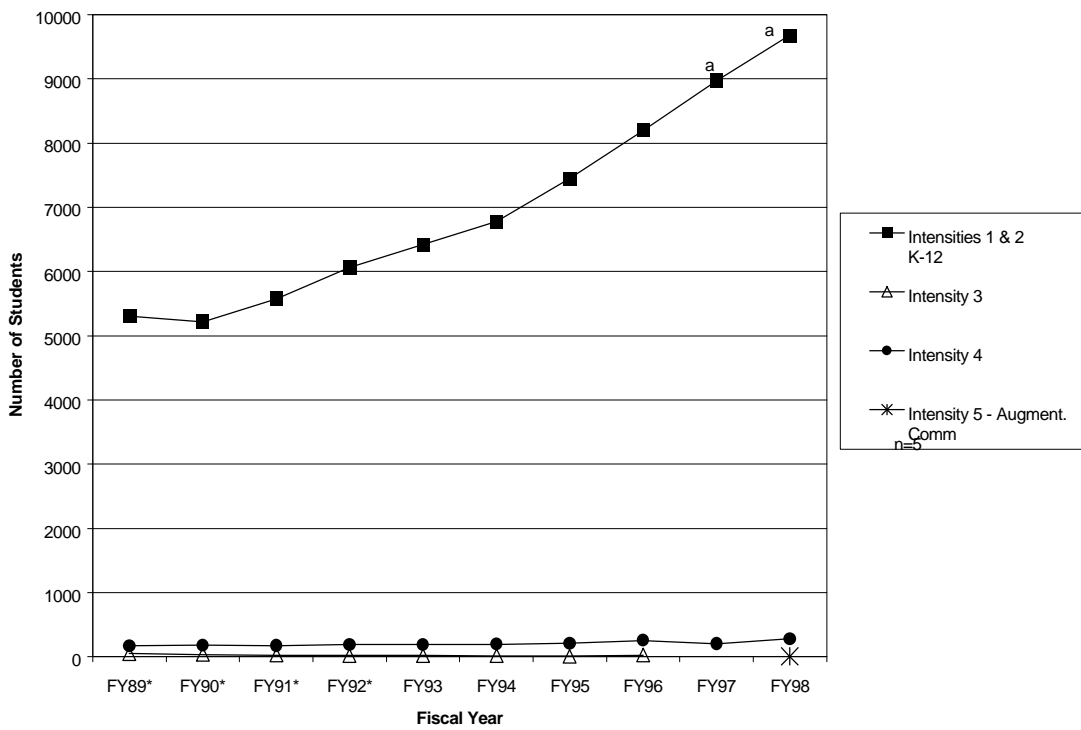
## MCPS Special Education Population By Age



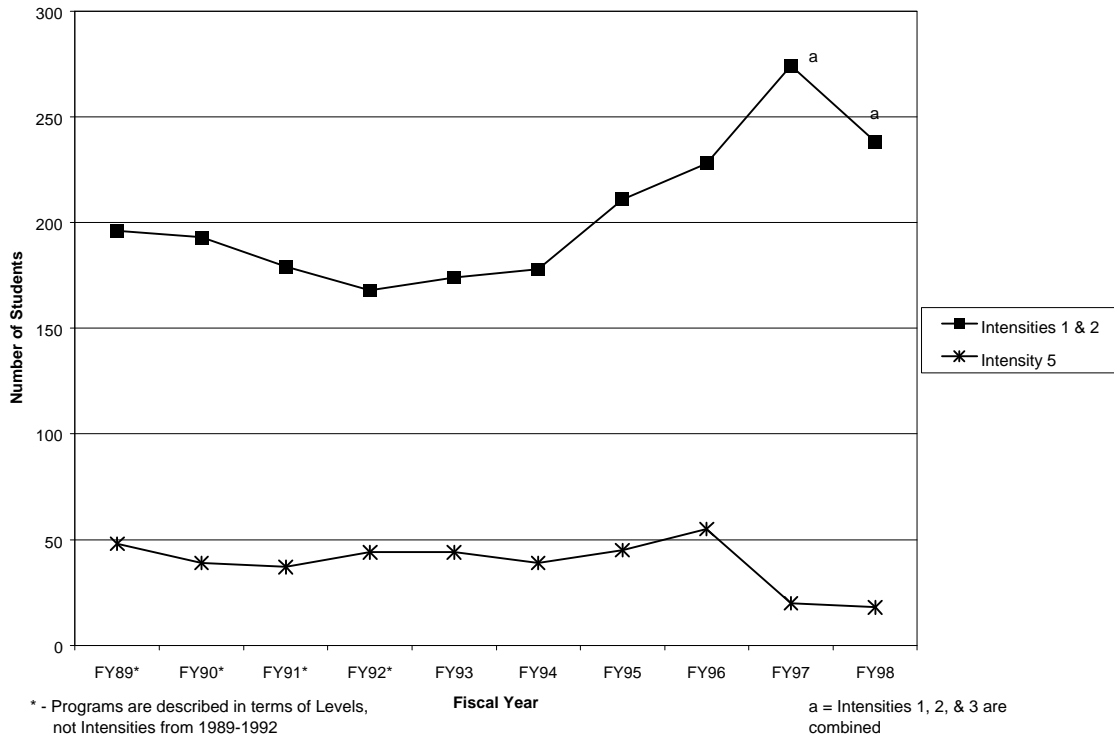
### Deaf and Hard of Hearing Programs Student Enrollment



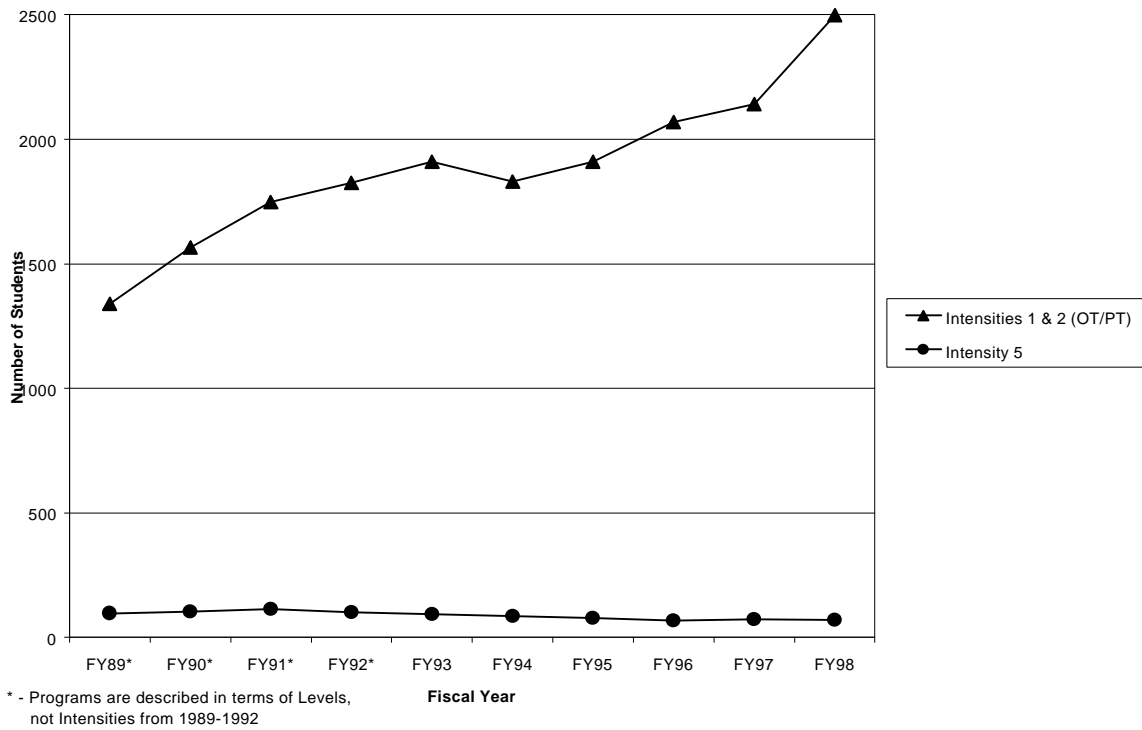
### Speech and Language Programs Student Enrollment



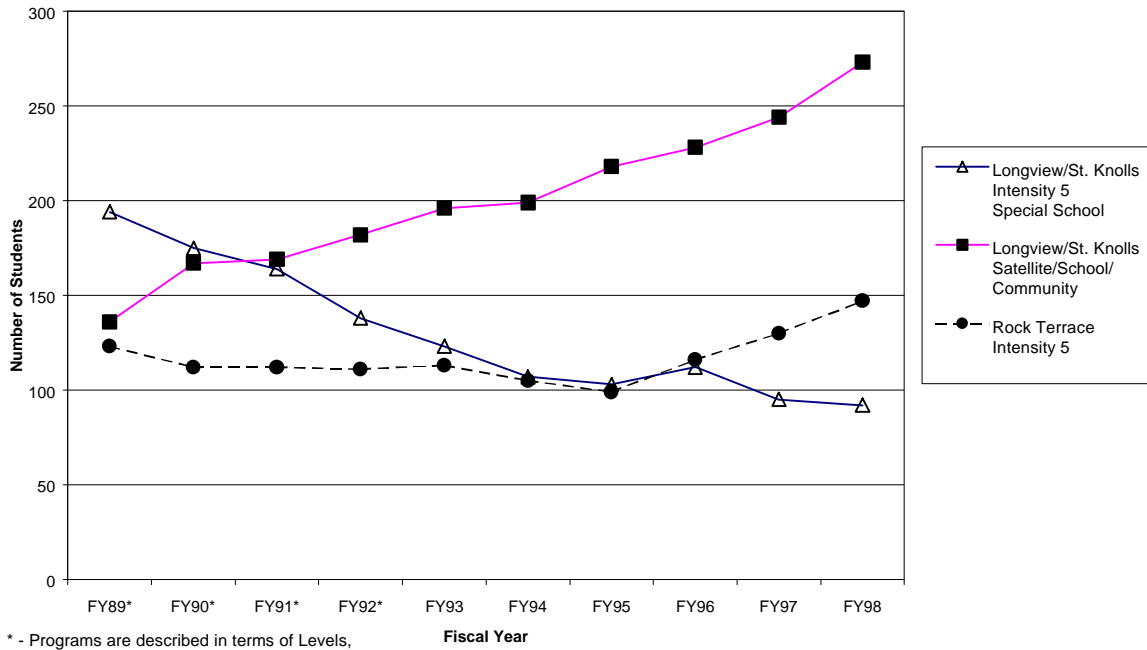
**Visual Impairments Programs  
Student Enrollment**



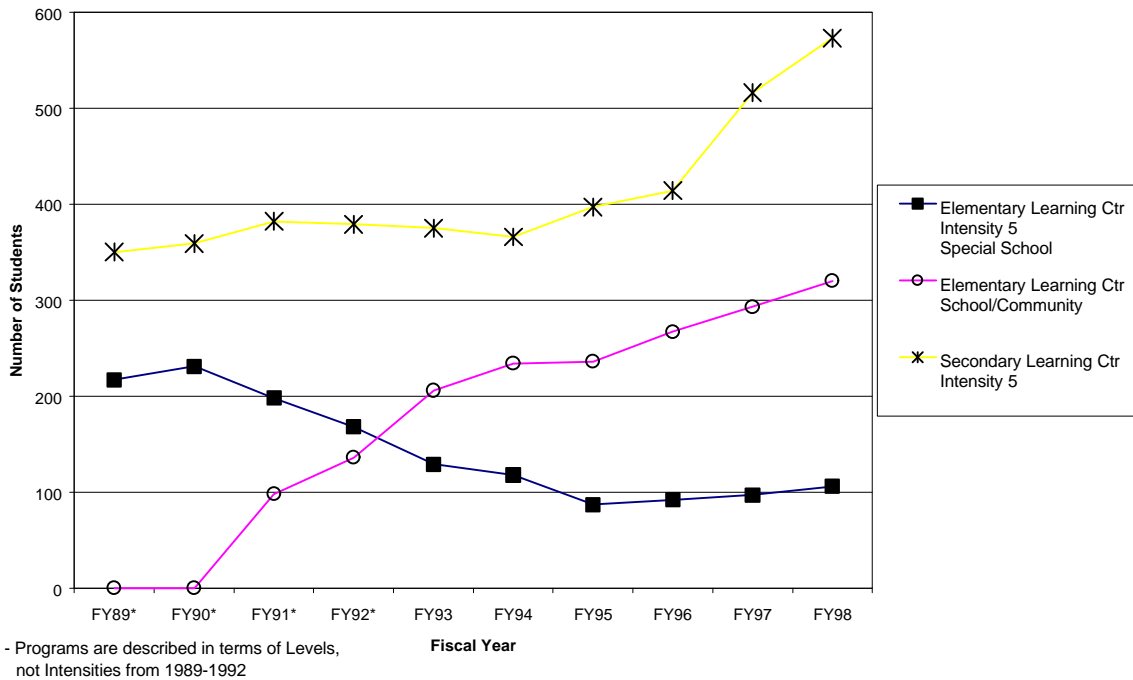
**Physical Disabilities  
Student Enrollment**

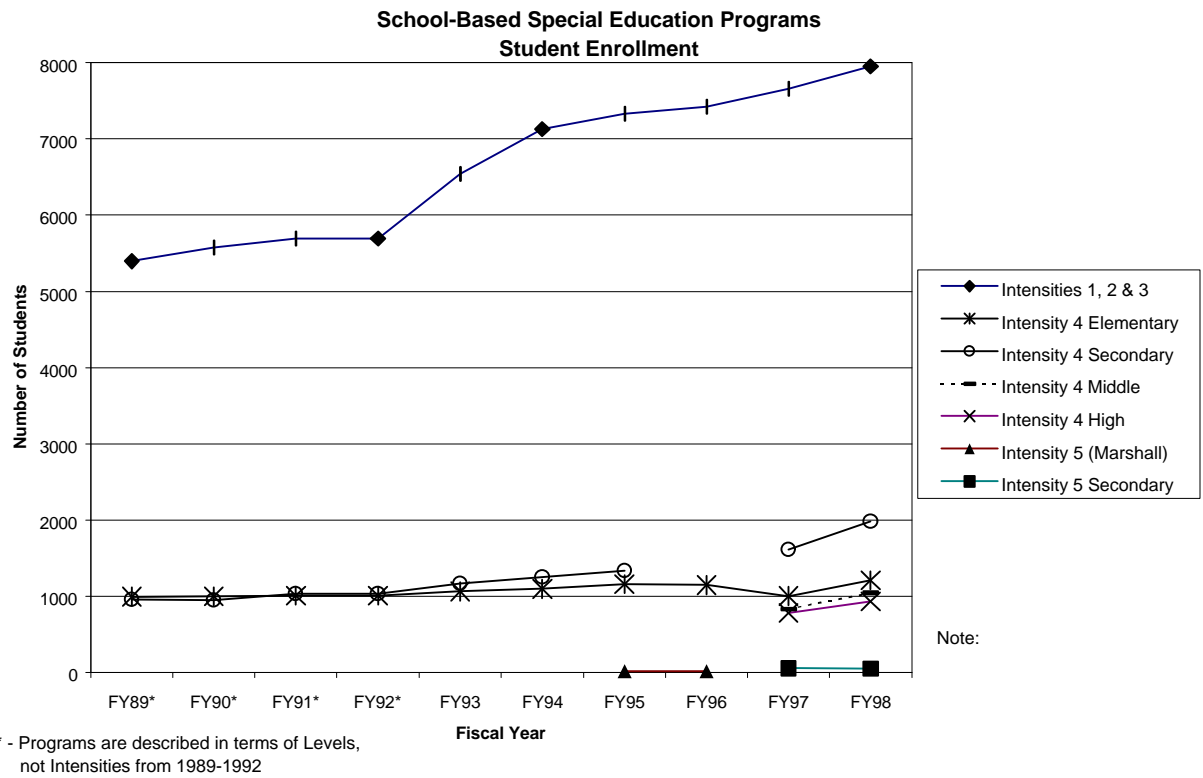
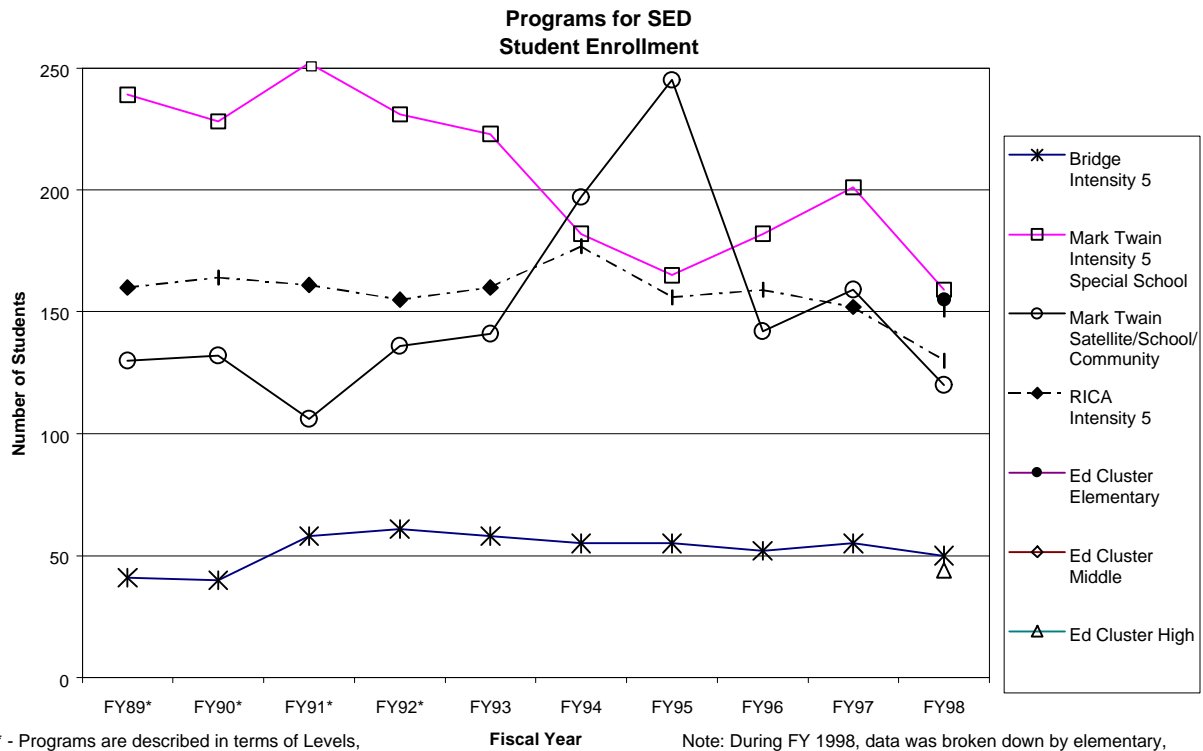


### Programs for MR Student Enrollment

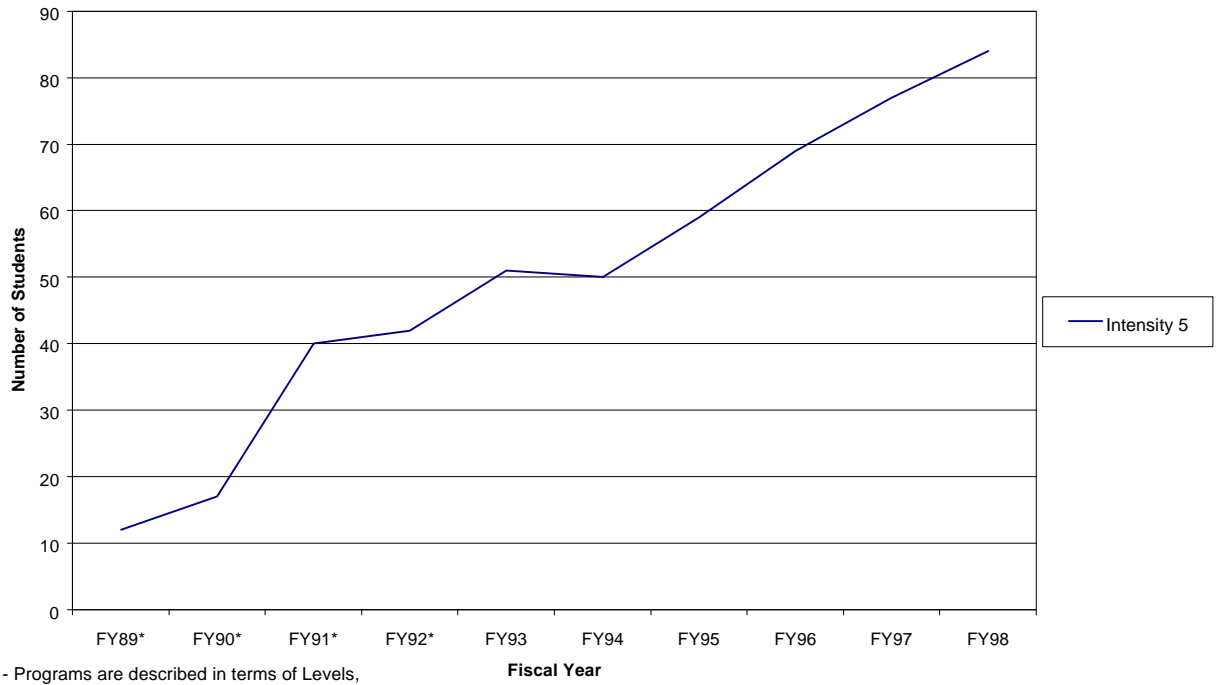


### Programs For LD Student Enrollment



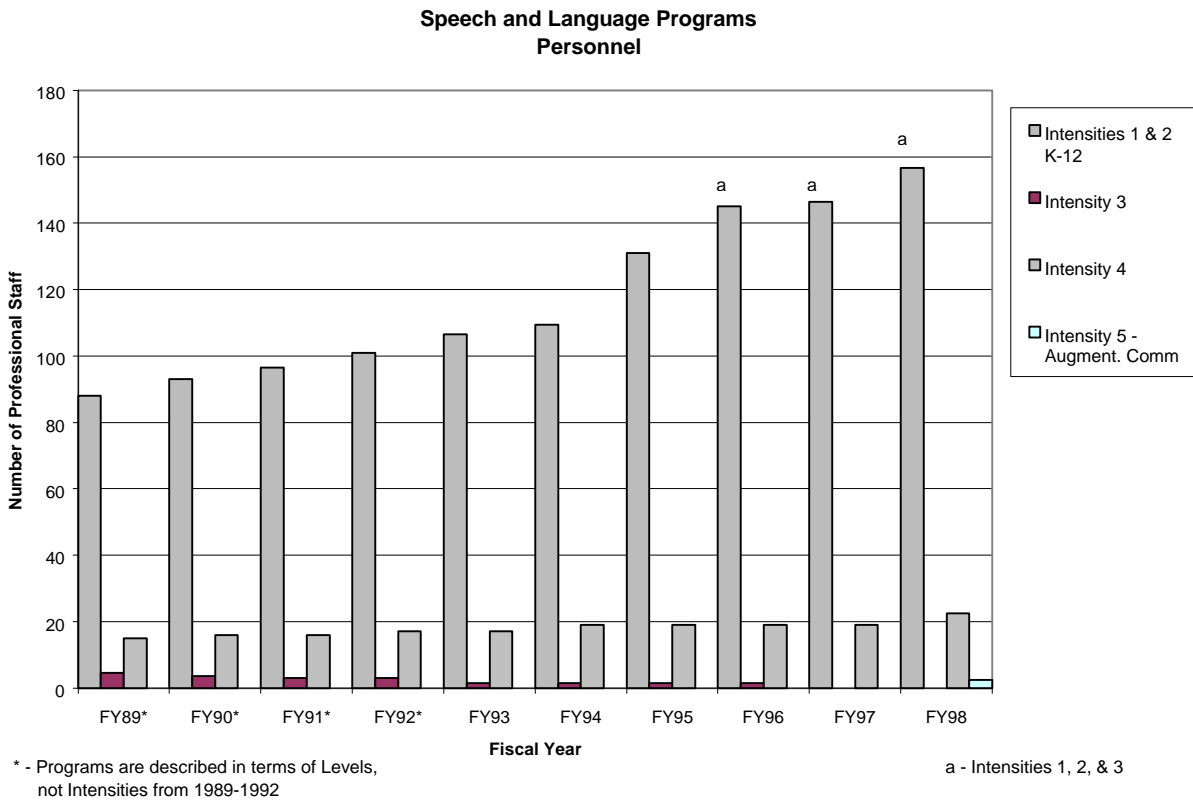
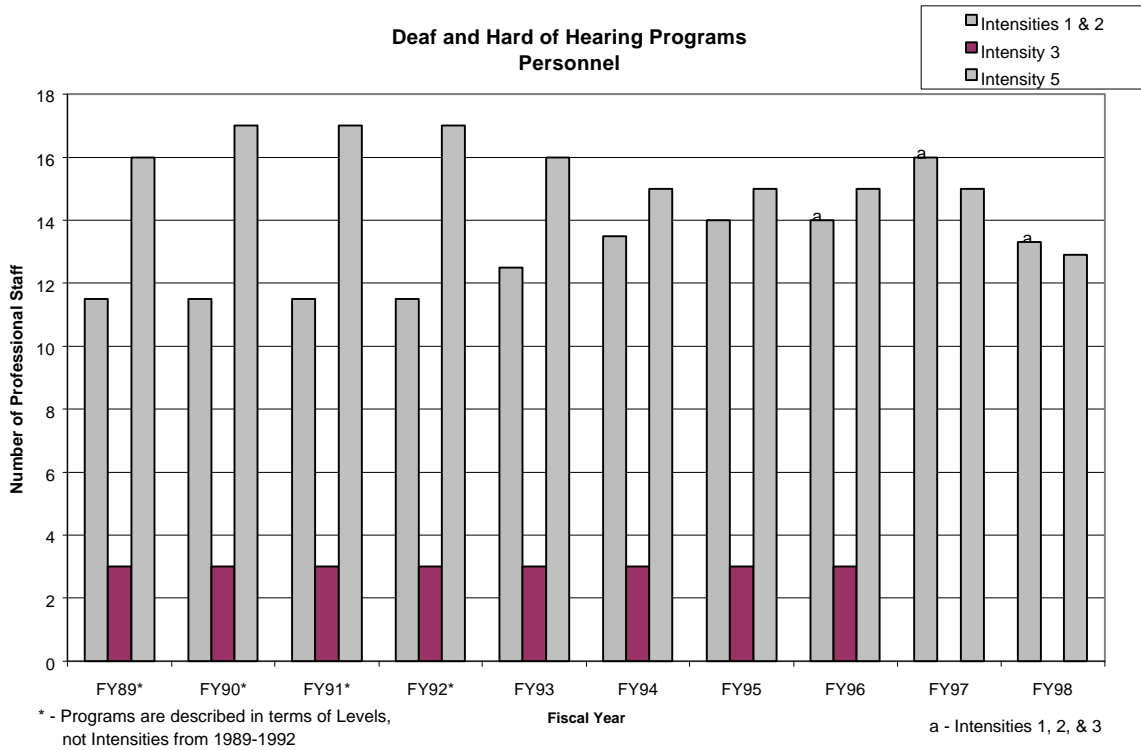


### Autism Programs Student Enrollment

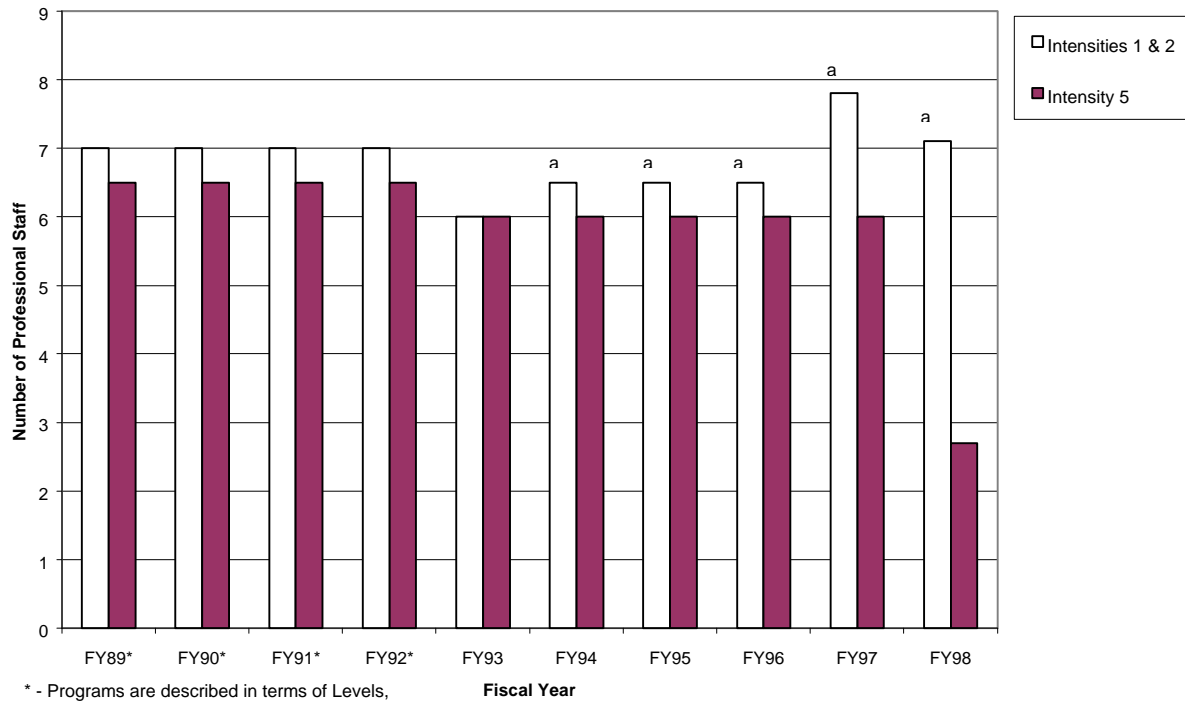


\* - Programs are described in terms of Levels,  
not Intensities from 1989-1992

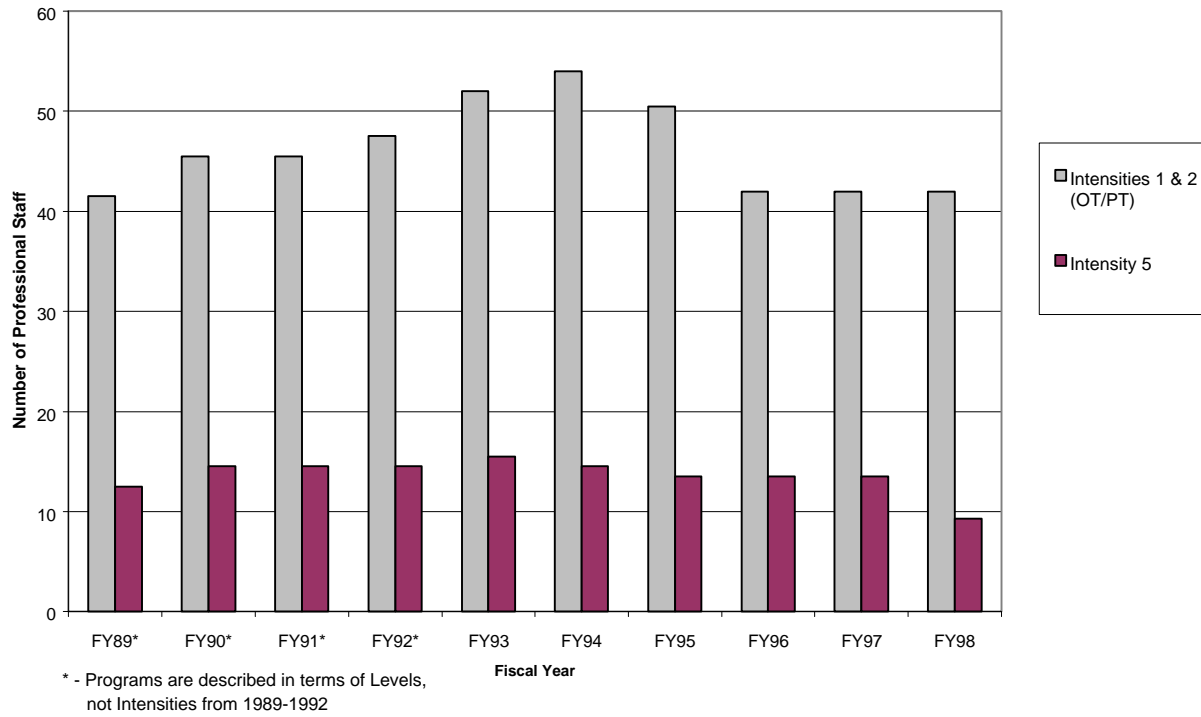
## Personnel



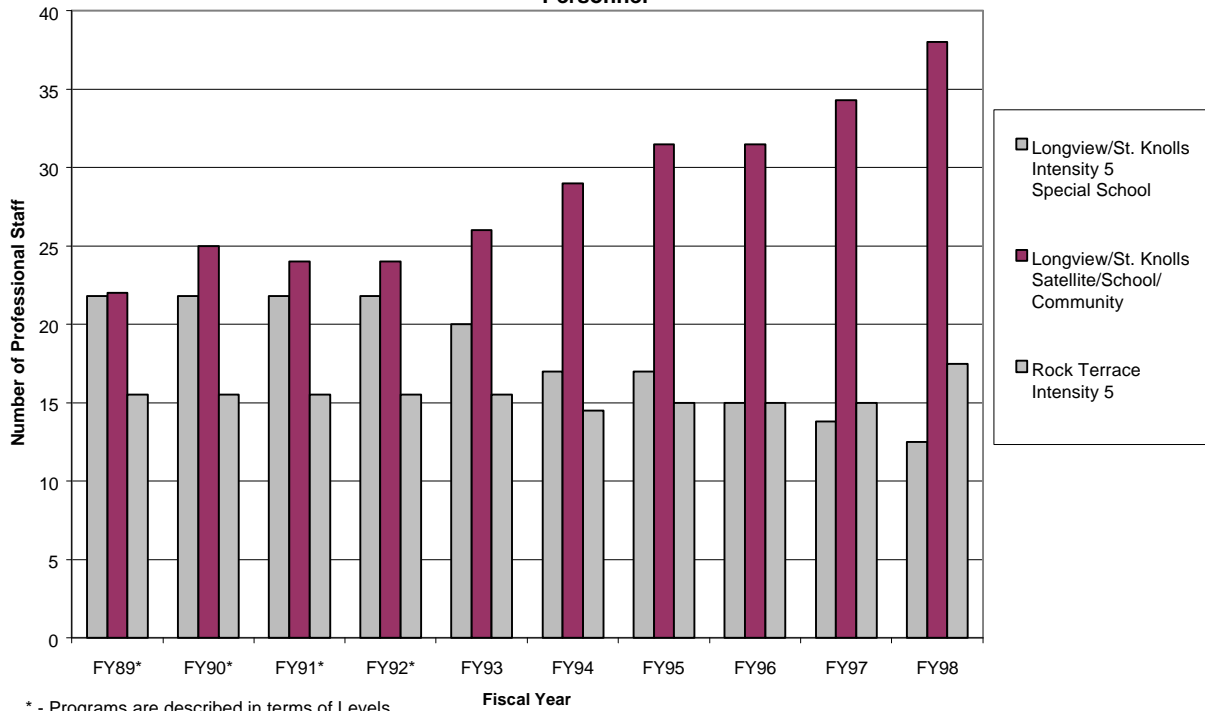
### Visual Impairment Programs Personnel



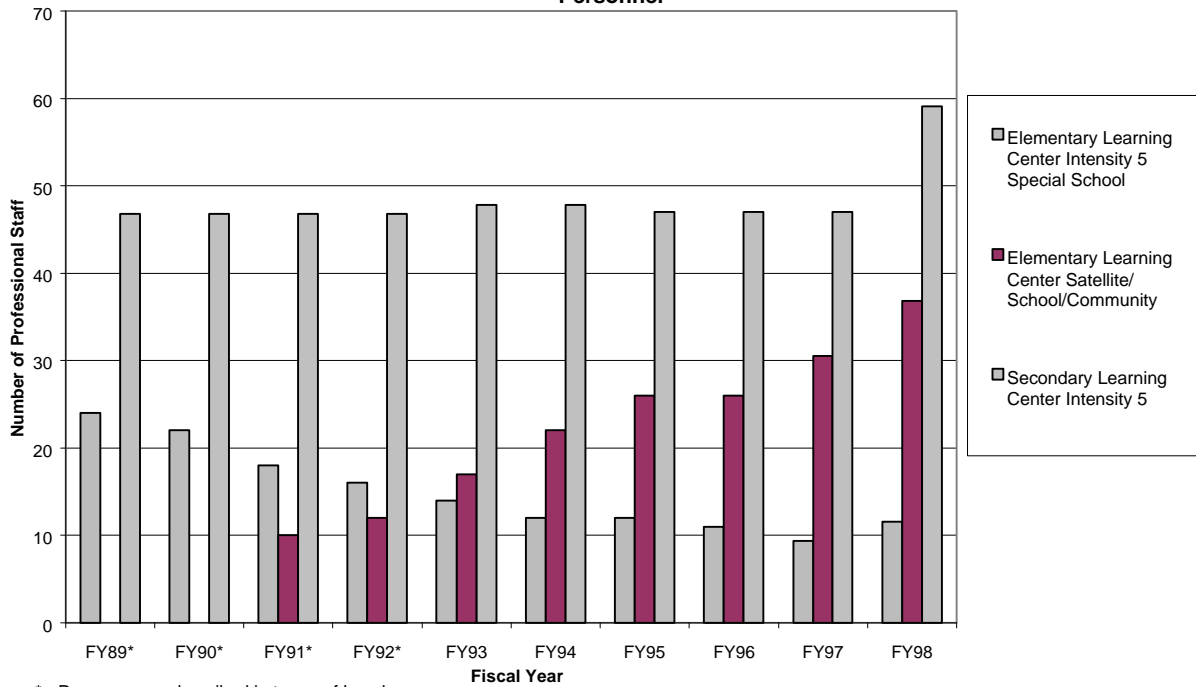
### Physical Disabilities Personnel



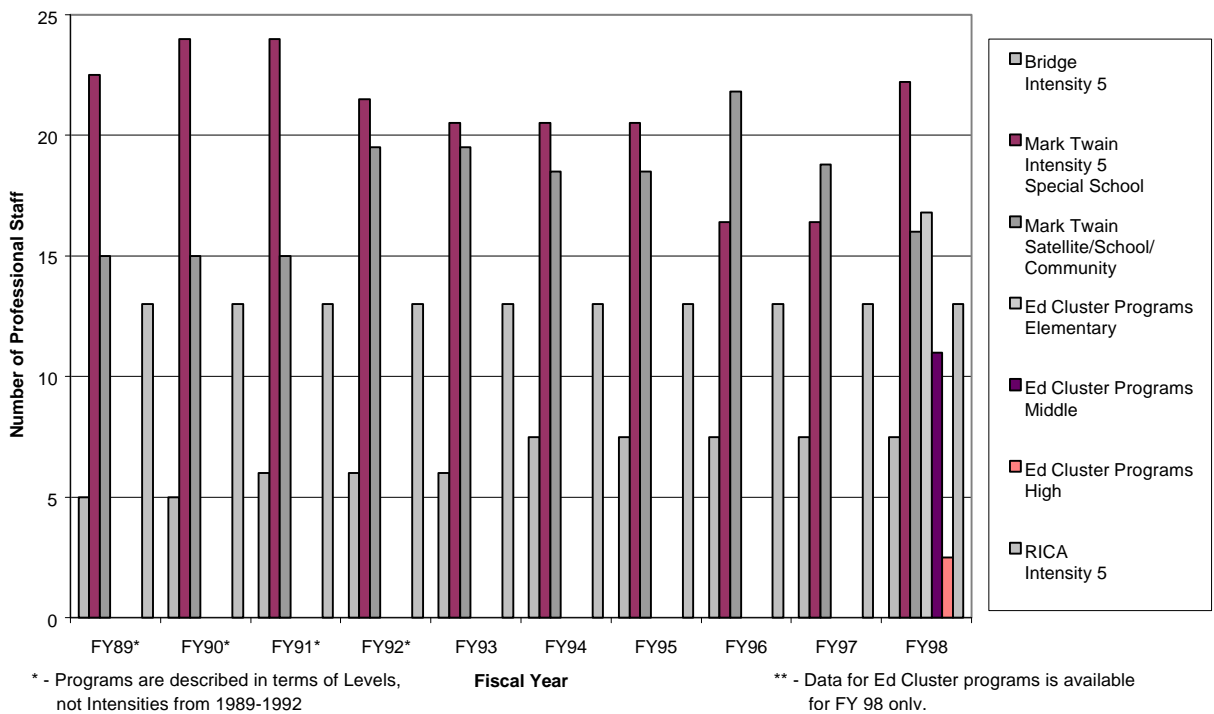
**Programs for MR (Longview, Stephen Knolls)  
Personnel**



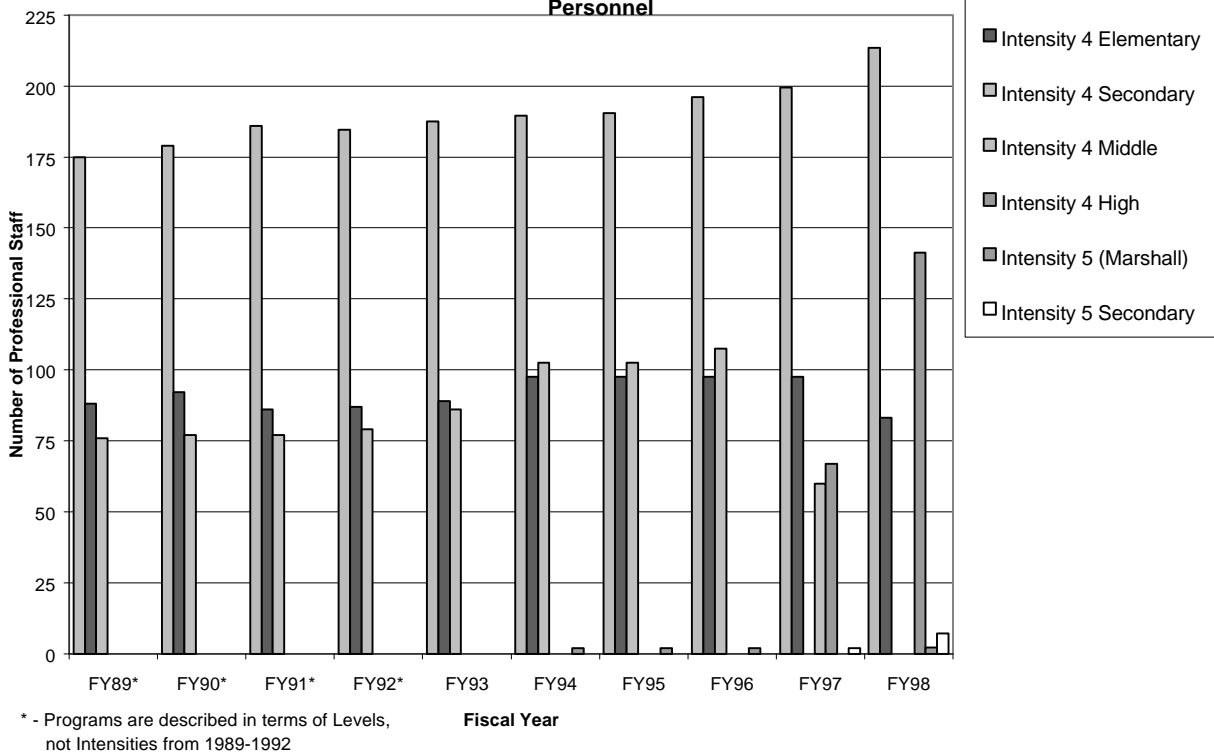
**Programs for LD  
Personnel**



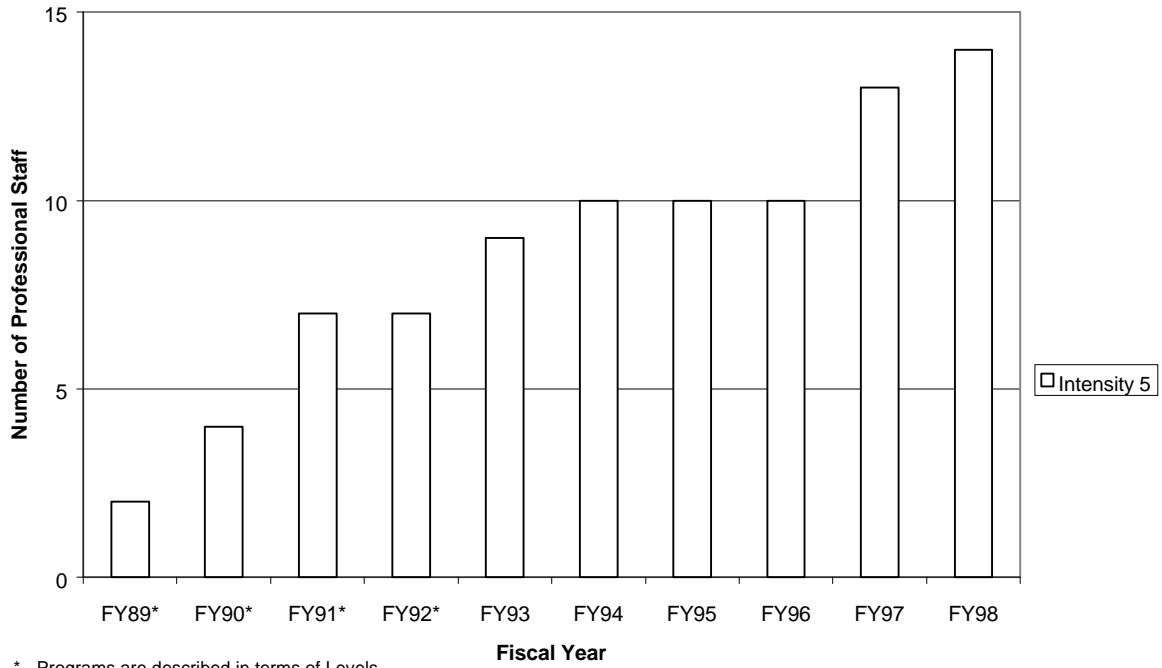
### Programs for SED Personnel



### School-Based Special Education Personnel



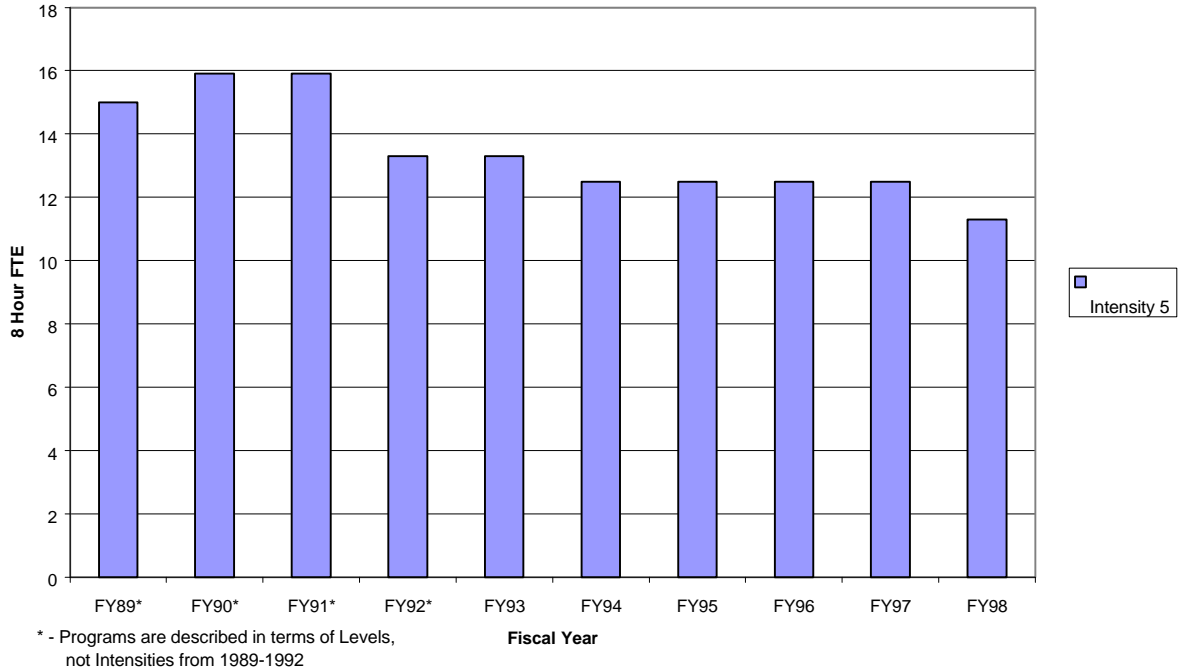
**Autism Programs  
Personnel**



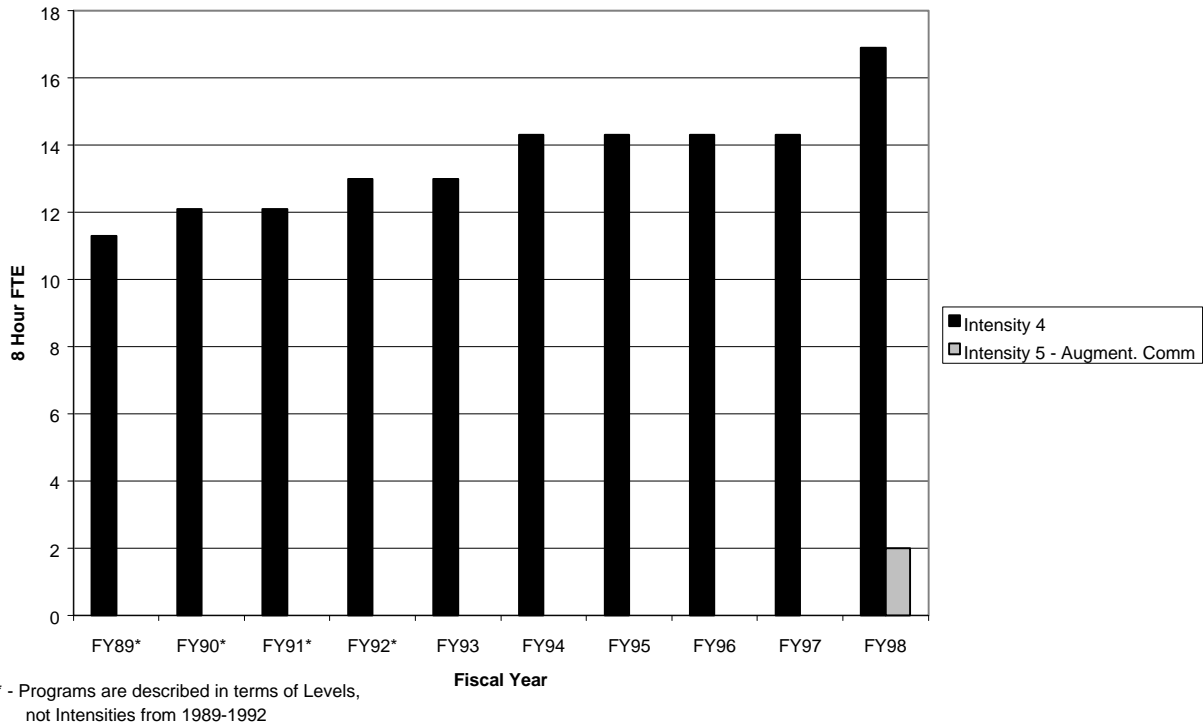
\* - Programs are described in terms of Levels,  
not Intensities from 1989-1992

## Instructional Assistants

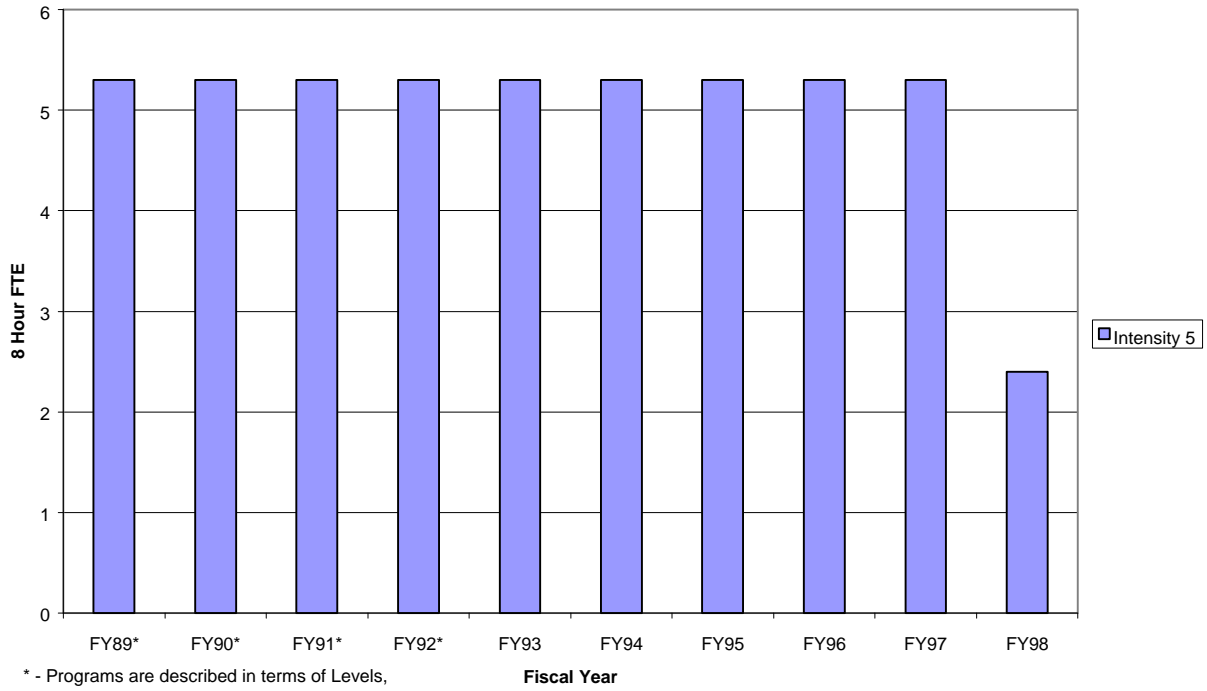
### Deaf and Hard of Hearing Programs Instructional Assistants



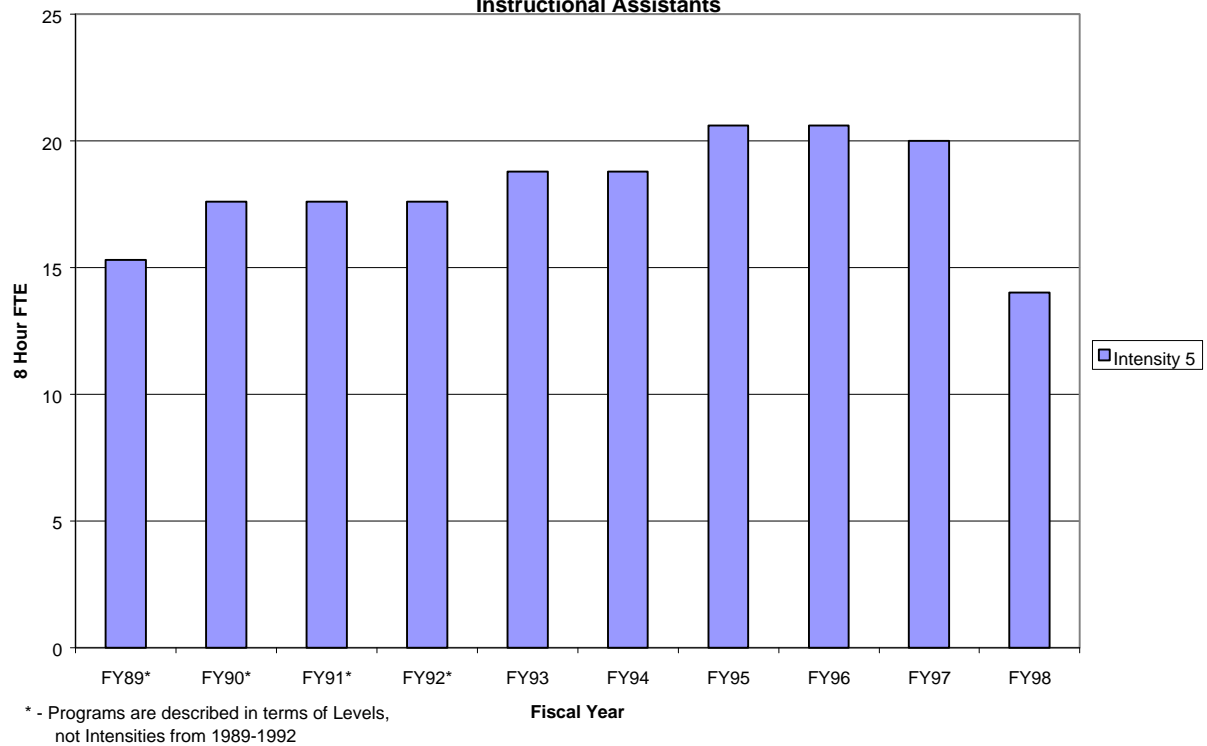
### Speech and Language Programs Instructional Assistants



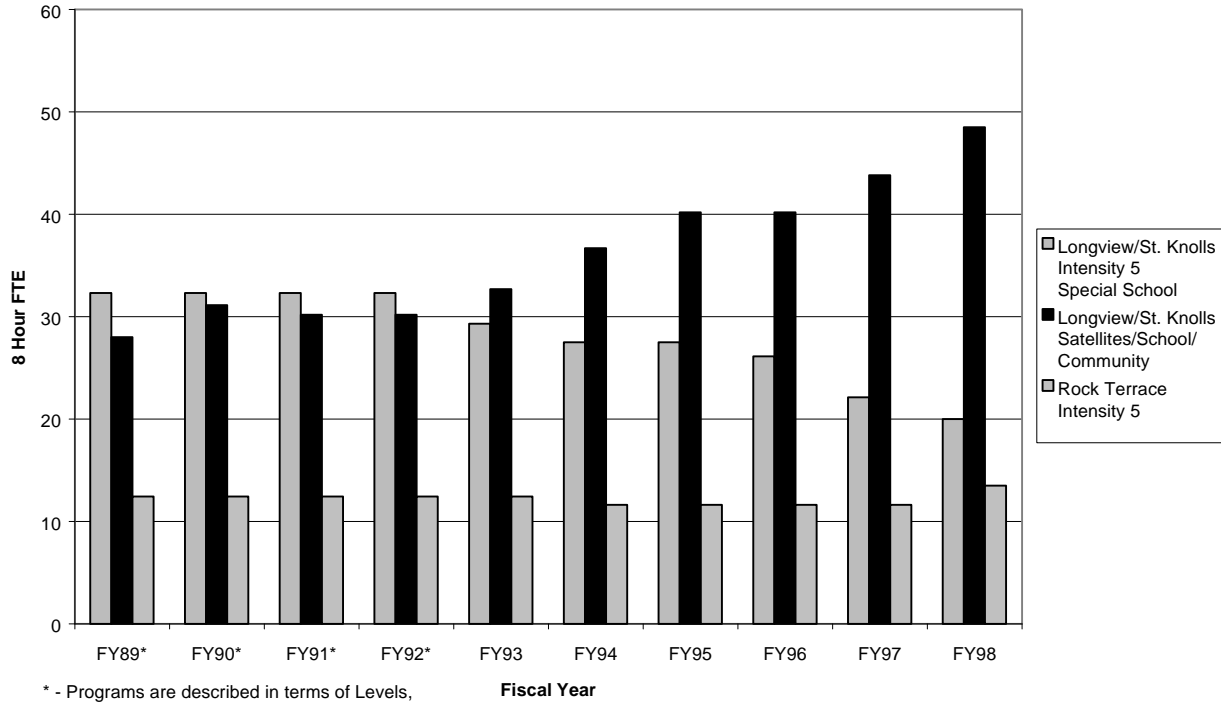
**Visual Impairment Programs  
Instructional Assistants**



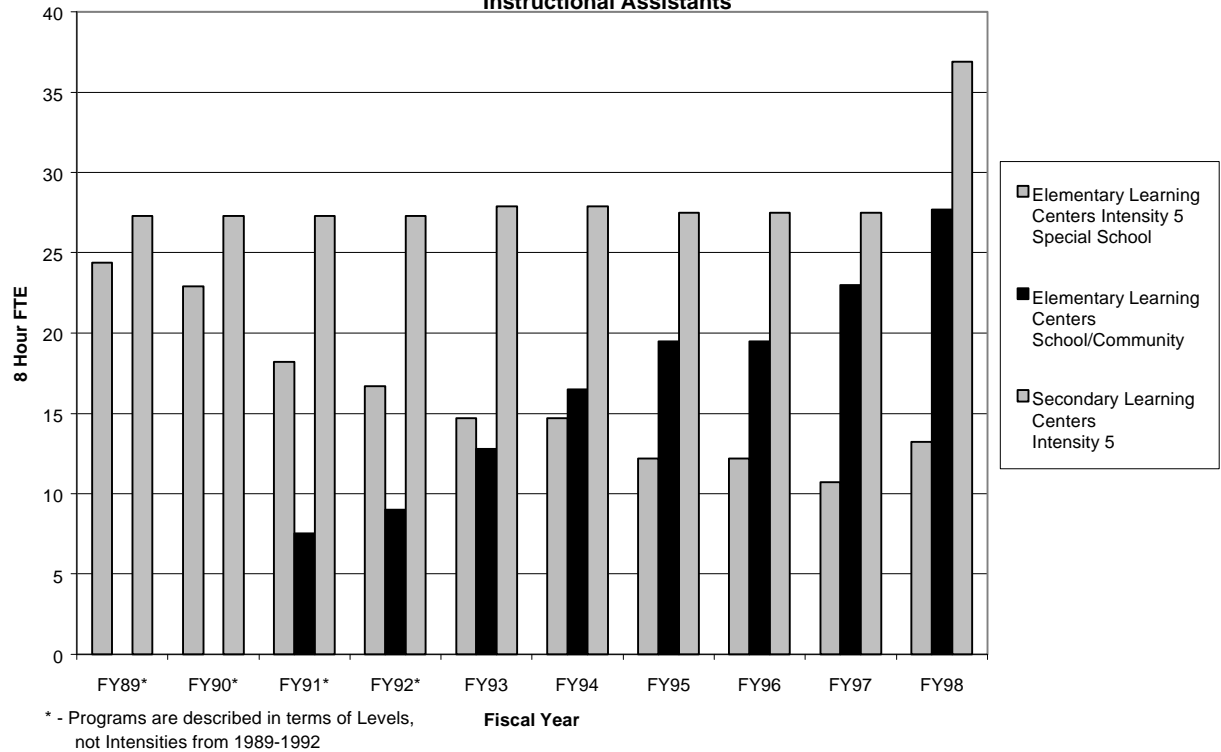
**Physical Disabilities  
Instructional Assistants**



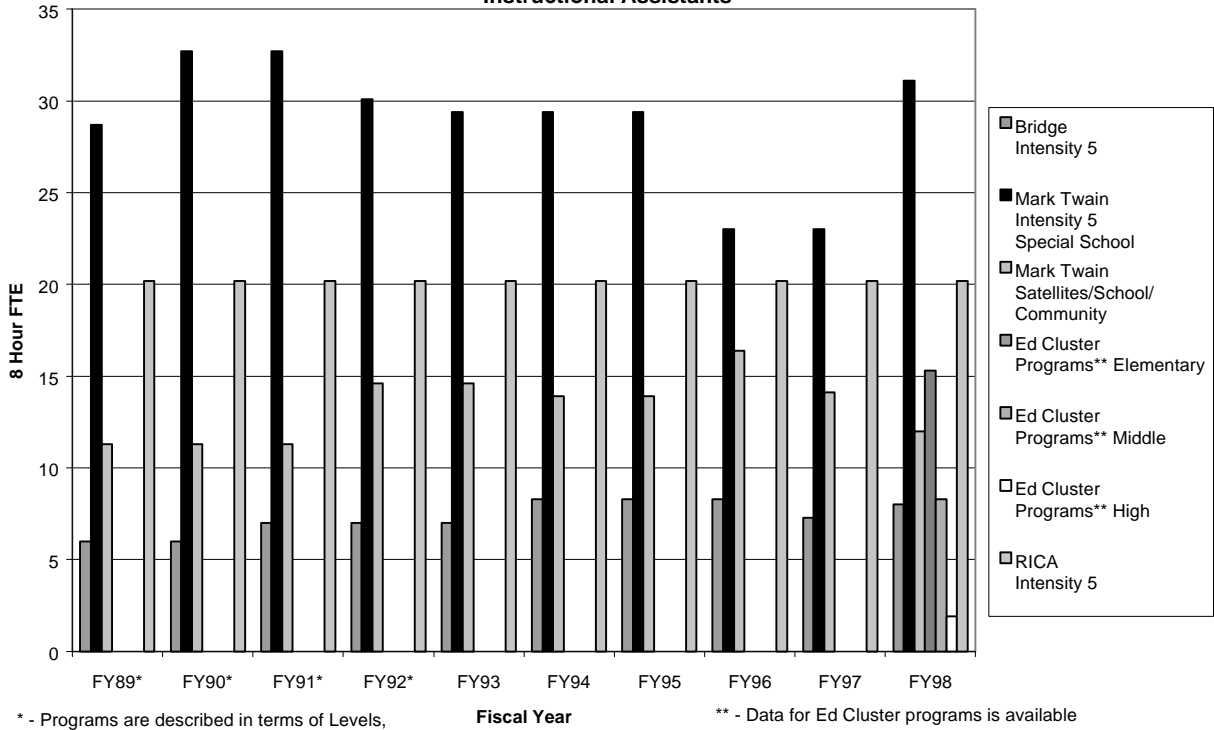
**Programs for MR (Longview, Stephen Knolls)  
Instructional Assistants**



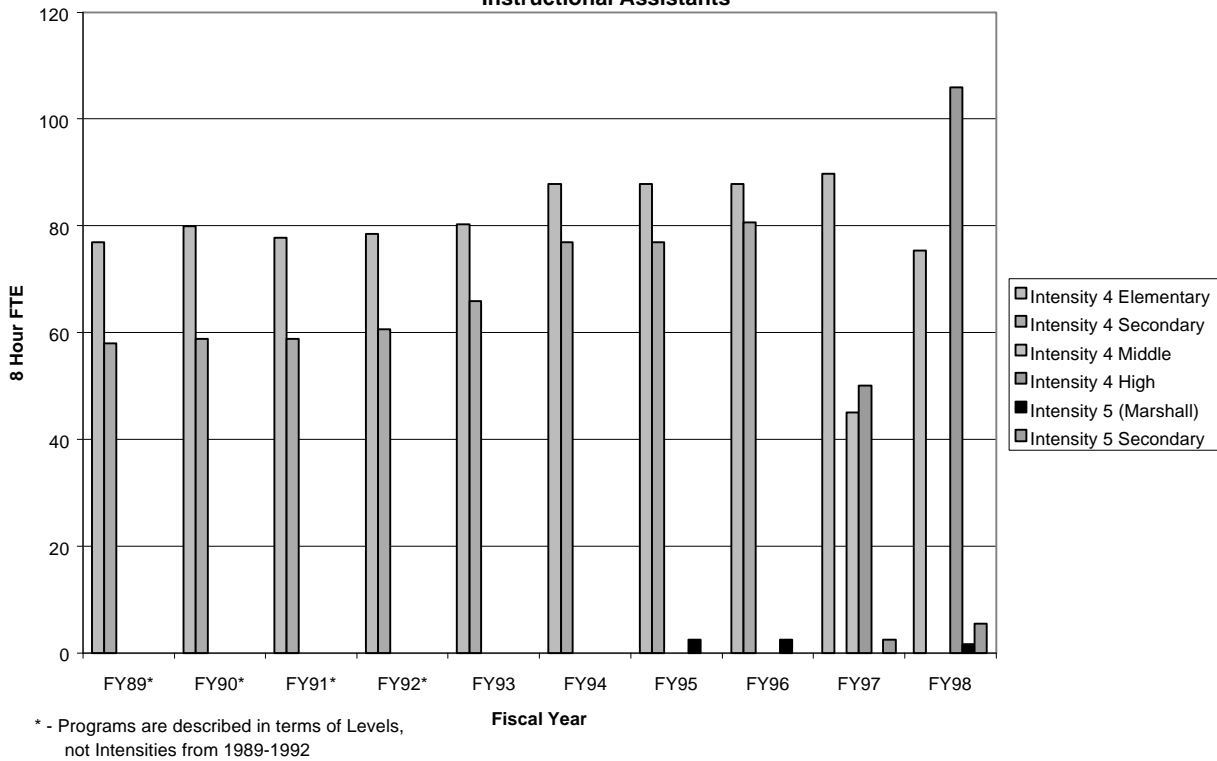
**Programs for LD  
Instructional Assistants**



**Programs for SED  
Instructional Assistants**



**School-Based Special Education Programs  
Instructional Assistants**



### Autism Programs Instructional Assistants

