

# Oakland Terrace ES

## Satellite Planning Process

Meeting #3

January 11, 2010

<http://www.montgomeryschoolsmd.org/departments/planning/Index2.shtml>



# Issue

---

- ❑ Oakland Terrace ES enrollment exceeds capacity by over 330 students
- ❑ Enrollment projections indicate that school will exceed capacity by over 450 students in next two years
- ❑ Downcounty Consortium ES #29 is scheduled to open in August 2012
- ❑ Need to identify an interim solution

	<b>2009–2010</b>	<b>2010–2011</b>	<b>2011–2012</b>
Capacity	456	456	456
Enrollment	792	873	912
Deficit	(336)	(417)	(456)

# Options Considered

---

- Holding School
  - All holding schools utilized by other schools
- Leased Space
  - Safety and security
  - Cost
- Another Elementary School
  - No elementary schools nearby with sufficient space available

# Proposed Plan

---

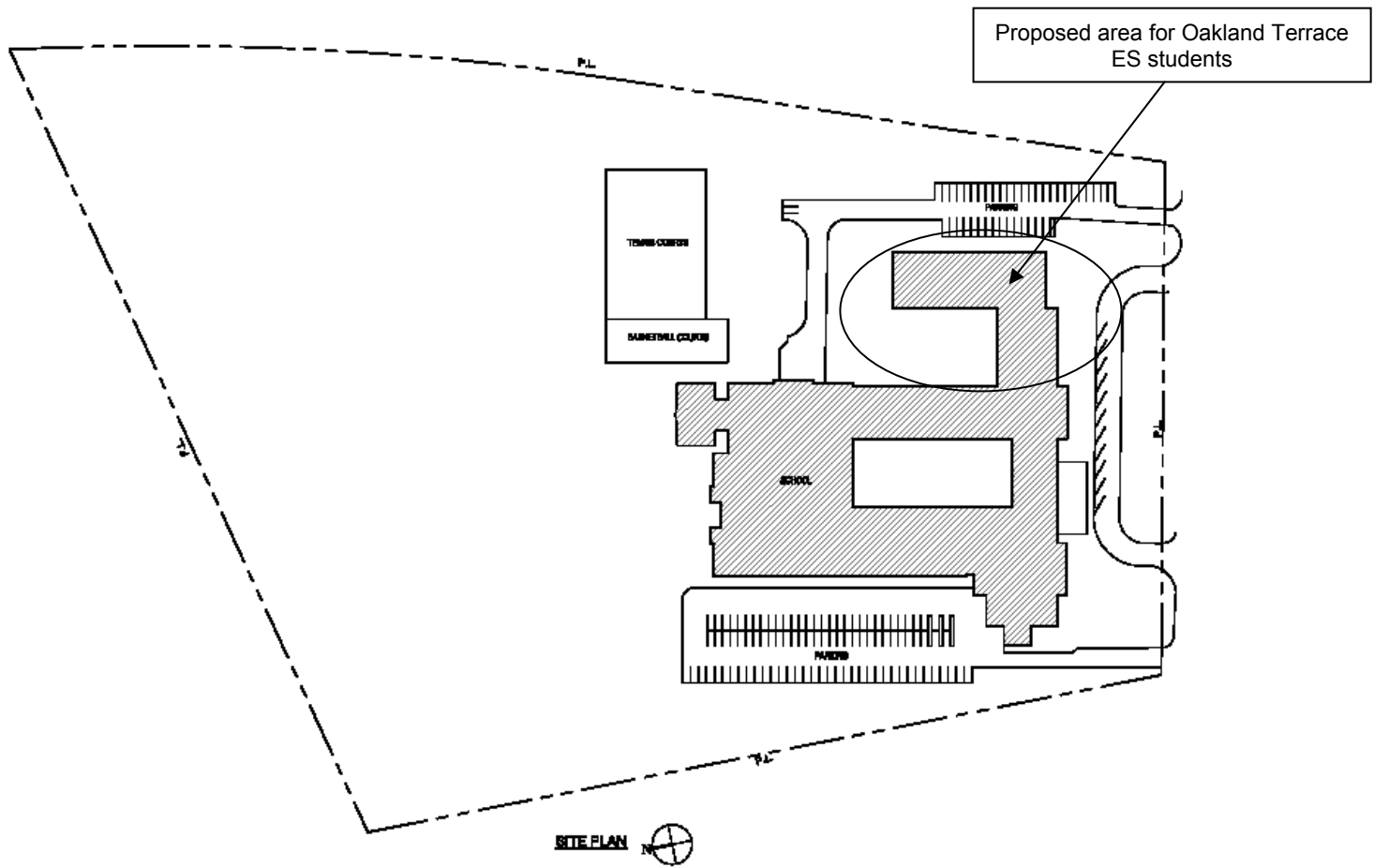
- ❑ Move one or two grade level(s) from Oakland Terrace ES to Sligo MS for two years until Downcounty Consortium ES #29 (McKenney Hills site) opens
- ❑ Utilize lower level of Sligo MS for Oakland Terrace ES students

# Sligo MS

---

- ❑ Sligo MS will have over 400 seats available in the next two years
- ❑ Capacity is calculated at 85%
- ❑ Capacity pulls out classrooms utilized by MCPS administrative offices

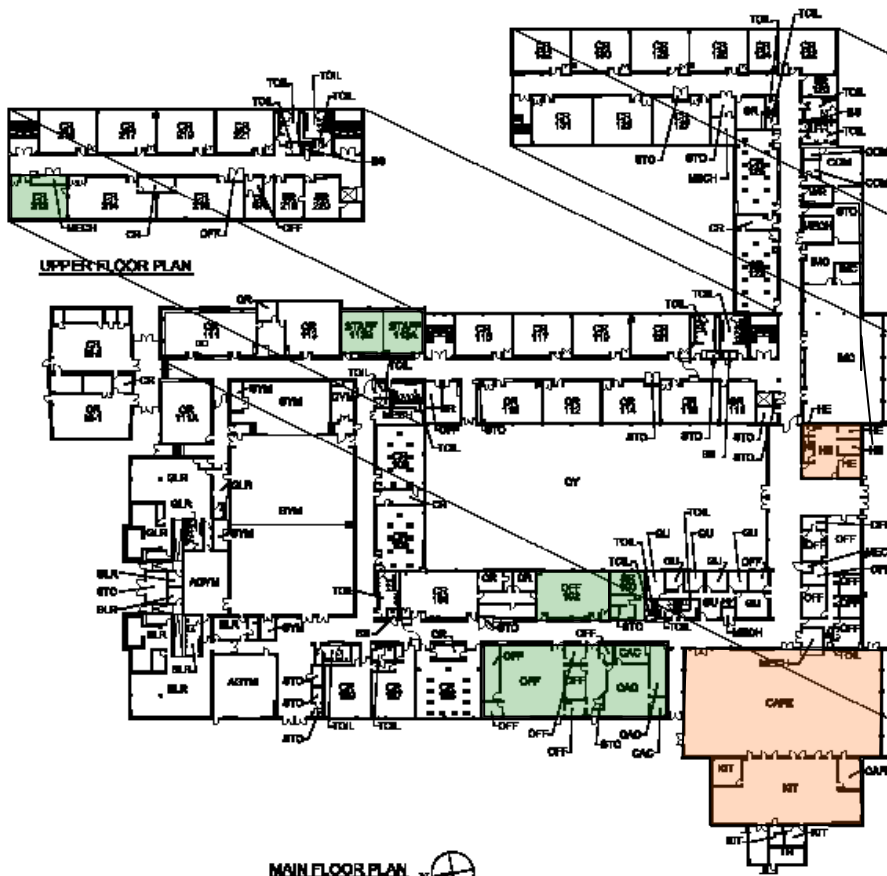
	<b>2009–2010</b>	<b>2010–2011</b>	<b>2011–2012</b>
Capacity	963	963	963
Enrollment	580	551	551
Space available	383	412	412



Proposed area for Oakland Terrace  
ES students

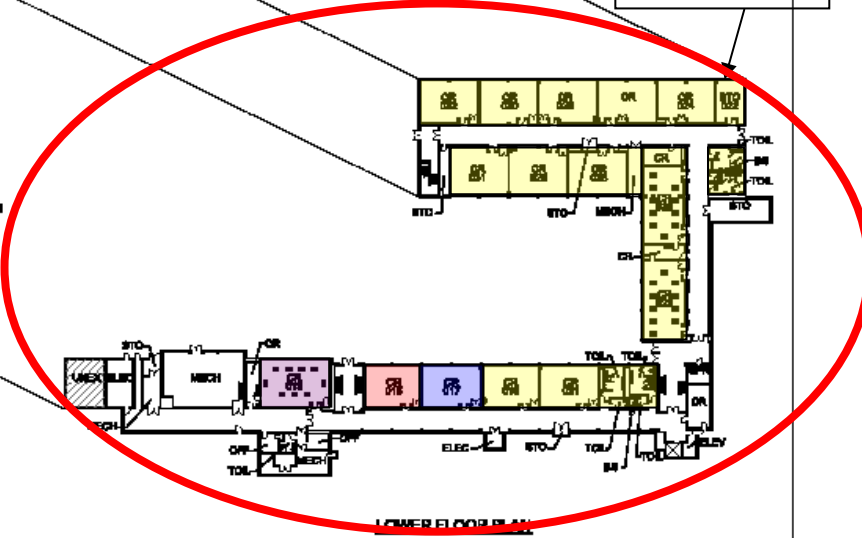
SLIGO MIDDLE SCHOOL

SCALE-N.T.S.



- Infants and Toddler Staff
- Hands On Science Office
- PPW Offices
- Oakland Terrace ES Satellite Campus
- Shared space
- Sligo MS

Proposed Administration



MAIN FLOOR PLAN

**SLIGO MIDDLE SCHOOL**

0' 10' 20' 40'  
SCALE: 1/8" = 1'-0"

# Implementation Issues

---

- ❑ Facility
- ❑ Elementary School Operations/Instruction
- ❑ Middle School Operations
- ❑ Safety and Security
- ❑ Continuity/Community Issues
- ❑ Transportation
- ❑ Food Services
- ❑ Staffing

# Facility Implementation Issues

---

- Sufficient number of classrooms to accommodate one or two grades from OTES
- OTES will have separate entrance with small administration suite to oversee entrance
- Space will be provided to serve as a satellite Media Center
- Space will be provided for art and music in the lower level
- Space will be provided for a staff workroom/lounge

# Facility Implementation Issues

---

- ❑ Cafeteria will be used for lunch and afternoon physical education
- ❑ Play area will be identified for OTES students for recess and physical education
- ❑ Lower wing has sufficient toilet facilities to serve the OTES students
- ❑ Water coolers will be provided for each classroom

# Elementary School

## Operations/Instruction

---

- ❑ Special services will be provided by OTES staff that will travel to Sligo MS
- ❑ Art, Music, PE, and Media Center staff will travel to Sligo MS to provide services
- ❑ Principal will oversee both locations and spend time at both schools
- ❑ Assemblies will be provided at Sligo MS
- ❑ Students will have the opportunity to participate in after school activities

# Elementary School Operations/Instruction

---

- ❑ Middle school and elementary school students will be separate throughout the day
- ❑ Planned and supervised activities may be provided for students to interact
- ❑ Parent participation will be available and encouraged

# Middle School Operations

---

- ❑ Middle school will utilize the main and upper levels
- ❑ Some teachers will need to float
- ❑ Class sizes will not increase due to this plan
- ❑ Sufficient lockers on the main and upper levels to accommodate middle school students
- ❑ Teachers will have access to computers during planning period

# Safety and Security Issues

---

- ❑ Safety and security of students is the school system's first priority
- ❑ OTES staff will have the primary responsibility for the safety of elementary school students
- ❑ Sligo MS staff will be available to assist when necessary

# Continuity/Community

---

- ❑ OTES staff will work with the community to ensure that the students in both buildings feel part of the greater OTES community
- ❑ Staff will work with parents and students to ensure smooth transitions
- ❑ Superintendent will make recommendations for Board of Education action

# Transportation–Proposed Plan

## Morning

---

### Transported Area

- ❑ Buses pick up all students as usual
- ❑ OTES students dropped at Sligo MS
- ❑ Other OTES students are dropped at Oakland Terrace ES, after drop off at Sligo MS

### Walk Area

- ❑ Buses pick up OTES students who attend Sligo MS only and dropped off at Sligo MS
- ❑ All other walkers walk to OTES

# Transportation–Proposed Plan

## Afternoon

---

### Transported Area

- ❑ Buses pick up all students
  - OTES students at Sligo MS picked up first
  - Other students picked up Oakland Terrace ES
- ❑ All students dropped off as usual

### Walk Area

- ❑ Buses pick up OTES students at Sligo MS
- ❑ Buses drop off OTES students who attend Sligo MS OTES
- ❑ OTES students at Sligo MS walk home with other students

# Transportation–Proposed Plan

---

- ❑ In order to accommodate this service within available resources, the school bell times would need to be adjusted to:
  - OTES at Sligo MS—9:15 to 3:30  
(same as current schedule)
  - Oakland Terrace ES—9:30 to 3:45  
(15 minutes later than current schedule)

# Food Services Implementation Issues

---

- ❑ System wide elementary school menu will be offered
- ❑ OTES students at Sligo MS will have the same choices as all of the other OTES students
- ❑ Lunchtime will be scheduled at approximately 12:30 pm after the middle school student lunches
- ❑ Students will be able to access their WinSnap accounts for meal debits and credits
- ❑ The OTES will be the only students in the cafeteria
- ❑ There will not be a line in the hallway; students will line up in the dining area
- ❑ Appropriate supervision will be provided

# Staffing Implementation Issues

---

- Any additional staffing needs will be reviewed by the superintendent and executive staff

# Timeline

---

- Dec. 7 & 14, 2009  
Jan. 11, 2010  
Community meets to identify implementation issues with proposed plan
- Jan. 29, 2010  
Issues and findings submitted to superintendent
- Feb. 12, 2010  
Superintendent releases recommendation to BOE concerning satellite space plans for Oakland Terrace ES

# Board of Education Timeline

---

- February 22, 2010 Board of Education work session
- March 3, 2010 Board of Education Public Hearing
- March 22, 2010 Board of Education action
- August 2010 Implementation of satellite space plans

# Discussion





# Downcounty Consortium ES #29

## Boundary Advisory Process

---

- Spring 2011      Boundary Advisory committee convenes to evaluate staff developed options
- June 2011      Boundary Advisory Committee report submitted to superintendent
- October 2011      Superintendent releases boundary change recommendation
- November 2011      Board of Education work session, public hearings, and action
- August 2012      Implementation of boundary changes