






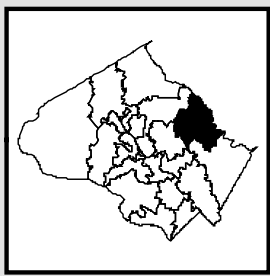
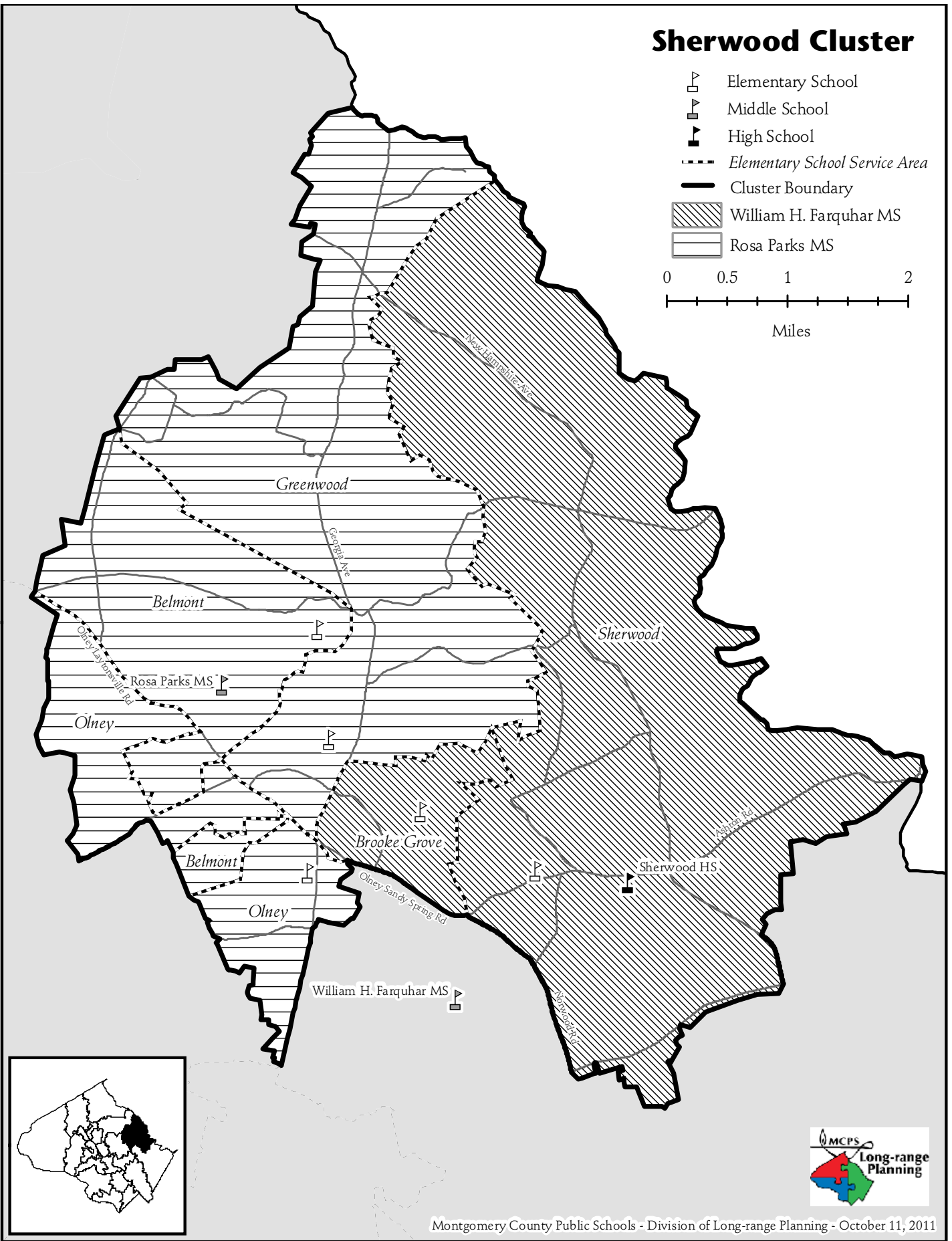


Sherwood Cluster

-  Elementary School
 -  Middle School
 -  High School
 -  Elementary School Service Area
 -  Cluster Boundary
 -  William H. Farquhar MS
 -  Rosa Parks MS
- 0 0.5 1 2
Miles



Montgomery County Public Schools - Division of Long-range Planning - October 11, 2011

SCHOOLS

William H. Farquhar Middle School

Capital Project: A modernization project was scheduled for this school with a completion date of August 2015. However, due to fiscal constraints in the county, as described in Chapter 1, the completion date has been delayed by one year to August 2016. An FY 2012 appropriation was approved for planning funds to begin the architectural design of the modernization. In order for this project to be completed on schedule, county and state funding must be provided at the levels recommended in this CIP.

Belmont Elementary School

Capital Project: A modernization project is scheduled for this school with a completion date of August 2019. FY 2015 expenditures are programmed for facility planning for a feasibility study to determine the scope and cost of the project. In order for this project to be completed on schedule, county and state funding must be provided at the levels recommended in this CIP.

CAPITAL PROJECTS

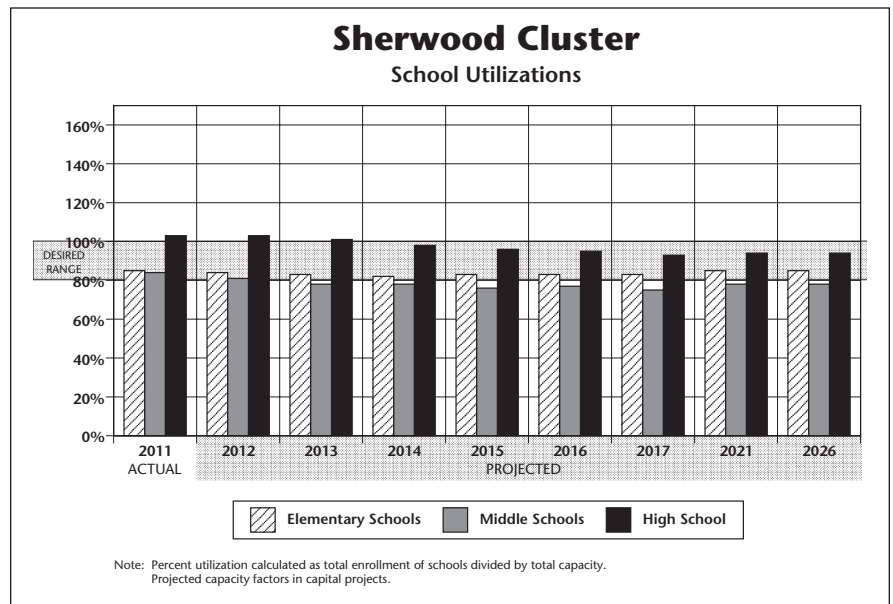
School	Project	Project Status*	Date of Completion
Farquhar MS	Modernization	Programmed	Aug. 2016 (delayed)
Belmont ES	Modernization	Programmed	Aug. 2019

*Approved—Project has an FY 2012 appropriation approved in the Amended FY 2011–2016 CIP.

Recommended—Project has an FY 2013 appropriation recommended in the FY 2013–2018 CIP.

Programmed—Project has expenditures programmed in a future year of the CIP for planning and/or construction funds.

Proposed—Project has facility planning funds approved in the Amended FY 2011–2016 CIP for a feasibility study or recommended in the FY 2013–2018 CIP.



SHERWOOD CLUSTER

Projected Enrollment and Space Availability

Effects of the Recommended FY2013–2018 CIP and Non-CIP Actions on Space Available

Schools		Actual	Projections								
			11-12	12-13	13-14	14-15	15-16	16-17	17-18	2021	2026
Sherwood HS	Program Capacity	2013	2013	2013	2013	2013	2013	2013	2013	2013	2013
	Enrollment	2073	2075	2030	1980	1941	1913	1868	1900	1900	
	Available Space	(60)	(62)	(17)	33	72	100	145	113	113	
	Comments										
William H. Farquhar MS	Program Capacity	881	881	881	881	881	796	796	796	796	
	Enrollment	636	644	583	586	580	586	572	600	600	
	Available Space	245	237	298	295	301	210	224	196	196	
	Comments		Planning for Modernization +1 LFI		Modernization in Progress		Mod Complete Aug. 2016				
Rosa Parks MS	Program Capacity	944	944	944	944	944	944	944	944	944	
	Enrollment	888	842	836	834	804	751	727	750	750	
	Available Space	56	102	108	110	140	192	216	194	194	
	Comments										
Belmont ES	Program Capacity	425	425	425	425	425	425	425	425		
	Enrollment	312	305	290	289	288	297	302			
	Available Space	113	120	135	136	137	128	123			
	Comments				Facility Planning for Mod		Planning for Modernization				
Brooke Grove ES	Program Capacity	544	544	544	544	544	544	544			
	Enrollment	389	386	390	390	395	392	397			
	Available Space	155	158	154	154	149	152	147			
	Comments										
Greenwood ES	Program Capacity	584	584	584	584	584	584	584			
	Enrollment	534	512	520	502	507	504	504			
	Available Space	50	72	64	82	77	80	80			
	Comments										
Olney ES	Program Capacity	584	584	584	584	584	584	584			
	Enrollment	611	607	592	585	582	584	573			
	Available Space	(27)	(23)	(8)	(1)	2	0	11			
	Comments										
Sherwood ES	Program Capacity	580	580	580	580	580	580	580			
	Enrollment	455	461	474	467	473	483	481			
	Available Space	125	119	106	113	107	97	99			
	Comments										
Cluster Information	HS Utilization	103%	103%	101%	98%	96%	95%	93%	94%	94%	
	HS Enrollment	2073	2075	2030	1980	1941	1913	1868	1900	1900	
	MS Utilization	84%	81%	78%	78%	76%	77%	75%	78%	78%	
	MS Enrollment	1524	1486	1419	1420	1384	1337	1299	1350	1350	
	ES Utilization	85%	84%	83%	82%	83%	83%	83%	85%	85%	
ES Enrollment	2301	2271	2266	2233	2245	2260	2257	2300	2300		

Facility Characteristics of Schools 2011–2012

Schools	Year Facility Opened	Year Reopened/ Modernized	Total Square Footage	Site Size Acres	Adjacent Park	Reloc-atable Classrooms	Linkages to Learning Program	Home School Model
Sherwood HS	1950	1991	333,154	49.3				
William H. Farquhar MS	1968		116,300	20				
Rosa Parks MS	1992		137,469	24.1	Yes			
Belmont ES	1974		49,279	10.5		1		Yes
Brooke Grove ES	1990		72,582	10.96				Yes
Greenwood ES	1970		64,609	10	Yes			Yes
Olney ES	1954	1990	68,755	9.9				Yes
Sherwood ES	1977		81,727	10.85		1		Yes