

# MONTGOMERY COUNTY PUBLIC SCHOOLS RETIREES ASSOCIATION, INC.



WWW.MCPSRETIREES.ORG  
MCPSRA MAILING ADDRESS:  
P. O. Box 4367  
ROCKVILLE, MD 20849-4367

VOLUME 2007-08, ISSUE #3

FEBRUARY 2008

## Board of Education Recommendations Primary Election February 12, 2008

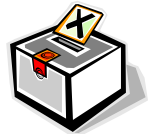
The Montgomery County Public Schools Retirees Association Political Action Committee is recommending you vote for the following candidates for Board of Education:

- At-Large: Phil Kauffman or Alies Muskin  
District 2: Laura Berthiaume  
District 4: No primary contest

Eight candidates were asked to respond to a questionnaire covering topics including budget shortfalls, retirees' health insurance costs, funding of retirement costs, school programs. Additionally, they participated in a thirty minute interview. Four candidates chose not to participate in the process by either not responding to the questionnaire or not participating in an interview, and therefore, were not considered.

The Primary Election is Tuesday, February 12. In the At-Large race there are five candidates. Two of them will make it to the General Election in November. We are recommending a vote for either **Phil Kauffman or Alies Muskin** in the Primary. If both of them are successful in the Primary, the committee will reconvene to make a further recommendation for the one person for whom to vote in the General Election. The District 2 race has only two candidates; therefore, their names will not appear on the February ballot. Both candidates' names will be listed on the November ballot (November 4, 2008) and we recommend you vote for **Laura Berthiaume**. The District 4 race is uncontested. The candidate's name will not appear on the Primary ballot but will appear on the ballot in the General Election.

I would like to thank the members of the Political Action Committee for their time and their thoughtful insights. They were terrific! Thank you to Zora Camp, Betsy



Doyle, Fred Evans, Shirley Haley, Jane Hardy, Gerry Johnson, Ken Muir, Bob Pine and Joy Schwab.

If you are not registered to vote, you have until January 22. Have a form mailed to you by calling 240-777-8683 or go to [www.777vote.org](http://www.777vote.org) where an application may be downloaded.

If you have any questions, please contact me. LeeAnn Kaye, MCPSRA Political Action Chair, [geolakaye@comcast.net](mailto:geolakaye@comcast.net) or call 301-598-5480.

### "LEADERSHIP IN ENERGY AND ENVIRONMENTAL DESIGN"

Enjoy friends and food and find future fund-saving ideas at our February 28, 2008 luncheon. Montgomery County's Great Seneca Creek ES is the first school in the State of Maryland to be LEED certified (Leadership in Energy and Environment Design). Great Seneca Creek is a Green School. Anja S. Caldwell, MCPS Green Building Program Manager, will share national and local steps that are succeeding in schools and communities. Come learn how LEED innovations can be utilized in public and personal practices. The menu and reservation form are on page 15. We look forward to having a fine turn-out for this excellent program.

Gerald W. Johnson, Vice President and Program Chair

**2008 MCPSRA LUNCHEONS  
MARK YOUR CALENDAR**

**February 28 April 24 June 26**

**MCPSRA BOARD OF DIRECTORS**

**Officers**

President.....	Fred Evans.....	301-424-5169
	fevans424@comcast.net	
Vice President.....	Gerald W. Johnson.....	301-466-1714
	lgfjhn@aol.com	
Recording Secretary.....	Elizabeth P. Doyle.....	301-947-0733
	edoyle3233@aol.com	
Corresponding Secretary.....	Jane S. Ahlberg.....	301-251-5560
Treasurer.....	Kenneth K. Muir.....	301-460-9583
Assistant Treasurer.....	Angelina Goffredo.....	301-942-2573

**Committee Chairs**

Archives.....	Jacqueline L. Gross.....	301-469-7408
	Jacquie0878@aol.com	
Auditing.....	George B. Thomas, Sr. ....	301-460-6960
	georgebgbtla@msn.com	
Budget.....	Kenneth E. Huff.....	301-622-2161
Development	kenandmarylou@gmail.com	
Community.....	Ruth P. Doak.....	301-593-0072
Service	bdoak1@verizon.net	
Education &.....		
Protective Services		
Hospitality/Luncheons.....	Angelina Goffredo.....	301-942-2573
Insurance.....	J. Thomas Hickman.....	301-929-9660
Co-Chairs	CTMAR28@yahoo.com	
	Stephen M. Raucher.....	301-460-9092
	sraucher@comcast.net	
Legislative.....	Jane Hardy.....	301-774-9494
	hjanehardy@aol.com	
MCPSRA Projects.....	Joan Donovan.....	301-253-6099
Co-Chairs	jcjdonovan@aol.com	
	Trish Bendler	301-540-5160
	teacher02@mailstation.com	
Membership.....	Juliette Trevino .....	301-460-9670
	jgtrevino@comcast.net	
Newsletter Editor.....	Zora Camp.....	301-445-0347
	zoracamp@yahoo.com	
Nominating.....	Karen Rabin	301-460-9643
	karenrabin@prodigy.net	
Parliamentarian.....	Nickie Neary.....	301-869-0057
	nearynic@msn.com	
Political Action.....	LeeAnn Kaye.....	301-598-5480
	geolakaye@comcast.net	
Public Relations.....	Gerald W. Johnson.....	301-466-1714
	lgfjhn@aol.com	
Recognition.....	Joan Donovan.....	301-253-6099
Co-Chairs	jcjdonovan@aol.com	
	Jane Hardy.....	301-774-9494
	hjanehardy@aol.com	
Scholarship.....	Joy G. Schwab.....	301-253-3294
Co-Chairs	schw35@aol.com	
	Ann Eberly.....	301-926-1639
	anneberly@starpower.net	
Trips.....	Frieda J. Price.....	301-926-2286
Co-Chairs	fjprice@verizon.net	
	Mary Ann Davis.....	301-253-6256
	giddygam@earthlink.net	
Louise S. Walker.....	Richard C. Ahlberg.....	301-251-5560
Scholarship		
Area 1 Director.....	Elizabeth P. Doyle.....	301-947-0733
	edoyle3233@aol.com	

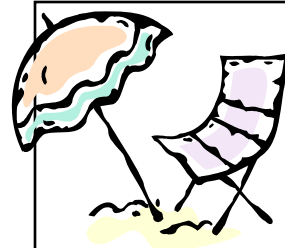
Printing by A. G. Fiorill Printing, Inc, Laurel, MD  
 Designs by: Kimberly Madary  
 Mailing by At Your Service, Inc, Beltsville, MD

**IN MEMORIAM**  
**February 2008**

Ariel L. Adams, Jr.	Mary V. Linott
Walter W. Baker	John S. Mann
William M. Herndon	Patricia D. Purcell
E. Johnson	James L. Tucker
Ruth A. Jones	Daniel E. Whitehead
Kathryne I. Lechluder	

**LITERACY TUTORS NEEDED**

The Literacy Council of Montgomery County has over 200 adult students on its waiting list for tutors. Become a volunteer literacy tutor and teach an adult to read, write, or speak English. No foreign language skills are necessary. Tutors work one-on-one or with small groups. Tutors typically meet with students in libraries or community centers at mutually convenient times. A tutor orientation will be held at the Rockville Library on Wednesday, February 6 from 10:30 am – noon . Sessions are also scheduled at the Rockville Library from 7:30 pm – 9:00 pm on Wednesday, February 13; Monday, February 25; and Tuesday, March 4. Registration is required. Call 301-610-0030 or email info@literacycouncilmcmd



**ENJOY THE BEACH  
 FOR LESS**

Join our group house near Bethany Beach. A lovely room (for one or two people) with house privileges. \$220 per room per week.

**Owners: Retired MCPS Teachers**  
**301-926-6943 or obieobwan@aol.com**

**Corrections**

A VOLUNTEER OPPORTUNITY in the December Newsletter inadvertently attributed the request to "Bob" Stief whereas his nickname is Bill. Ruth Doak, Community Service Chair apologizes for this error.

Mrs. Jane S. Ahlberg's last name was inadvertently misspelled on page 1 of the December Newsletter. I apologize for this error. Zora Camp, Editor

The Montgomery County Public Retirees Association, Inc. publishes a Newsletter five times a year. All submitted content, including paid advertising, represents the view of its author alone and does not necessarily represent the views of this Newsletter, its staff or the MCPSRA, Inc.

COMPLETE THIS FORM ONLY IF YOU ARE APPLYING FOR MEMBERSHIP



Maryland Retired School Personnel Association  
Montgomery County Public Schools Retirees Association  
Application for Membership

Name \_\_\_\_\_ Soc. Sec. # \_\_\_\_\_ Birthdate \_\_\_\_\_  
Address \_\_\_\_\_ Telephone \_\_\_\_\_  
City \_\_\_\_\_ State \_\_\_\_\_ Zip + 4 \_\_\_\_\_ Email \_\_\_\_\_

Please sign authorization for dues deduction (see below) **OR** make check payable to MCPSRA.

<b>Mail to: MCPSRA – Membership Chair</b>	<b>MRSPA DUES</b>	<b>\$25.00</b>
<b>Box 4367</b>	<b>Local Dues</b>	<b>10.00</b>
<b>Rockville, MD 20849-4367</b>	<b>Total</b>	<b>\$35.00</b>

I hereby authorize the Retirement and Pension System of the State of Maryland to deduct annual membership dues for the MRSPA and the MCPSRA from one of my retirement checks each membership year.

I understand that my social security number is required if I wish to become a dues deduction member.

SSN \_\_\_\_\_

**This authorization will remain effect until cancelled by written notice mailed to the Maryland Retired School Personnel Association.**

Signature \_\_\_\_\_ Date \_\_\_\_\_



**A MESSAGE FROM  
PRESIDENT FRED EVANS**



On behalf of the MCPSRA Board of Directors, I wish you a very Happy and Healthy New Year. Please follow through on that resolution to take a special trip, organized by our superb Trips Co-Chairs, Frieda Price and Mary Ann Davis, or to begin a new hobby. On that note, I have returned to piano lessons, after quitting over 50 years ago!! Remember the advice from our fitness consultant, Mr. Kenn Kihui, that, "It is never too late!"

As a result of the projected \$1.7 billion state budget shortfall, Maryland Governor Martin O'Malley called a special session of the Maryland legislature in November. The immediate results of the session generated new taxes to reduce the deficit and called for approximately \$550 million in budget cuts. In my last message to you, I urged you to contact legislators about our opposition to any proposal to reduce the state's commitment to retirement costs. A bill filed by Delegate John P. Donoghue of Washington County, which called for shifting the part of the cost to local jurisdictions, did not make any headway. However, we must continue to monitor the current session to ensure that our benefits are protected. You can reach your delegate or senator at 1 800-492-7122, or via email through the General Assembly web site <http://mlis.state.md.us>.

The Political Action Committee, chaired by LeeAnn Kaye, has interviewed school board candidates for the upcoming primary elections on February 12, 2008. The recommendation process is another important function of our Association. I encourage all of you, who still reside in Montgomery County, to get involved in the process by informing your friends and acquaintances about our recommended candidates for office. Every election is important, but this one is especially important given the significant budget issues facing our community.

Once again, please get involved in the life of your Association. Our luncheons at the Willow Tree Inn are on February 28, 2008, April 24, 2008 and June 26, 2008. Come and join your friends and former colleagues and make new friends! I challenge each of you to recruit at least one new retiree to join our Association. As I've said many times, membership in MCPSRA is a bargain for \$35.00 a year! We become a stronger organization as our membership increases.

Finally, do not hesitate to contact me if you have any questions or suggestions about how the MCPSRA Board of Directors can improve services to you. We look forward to your input and participation.

# THE GEORGE B. THOMAS, SR. LEARNING ACADEMY, INC. (GBTLA)

## Second Semester Starts Strong

As of the start of the second semester, nearly 2,800 students are enrolled in the GBTLA. Because students can register at any time throughout the year, we expect to reach an unprecedented enrollment of 4,000 by the end of the school year! As our enrollment grows, the need for tutors also grows. Tutoring at the GBTLA is a great opportunity to stay connected with the school system and make a difference in the lives of young people.

Both lead tutors and volunteers are needed. Individuals with certification are eligible to serve as lead tutors and will receive a stipend of \$35 per hour. Those without certification can serve as volunteers.

All twelve center locations are in need of both lead tutors and volunteers:

- Montgomery Blair Center
- Albert Einstein Center
- Gaithersburg Center
- John F. Kennedy Center
- Northwest Center
- Magruder Center
- Paint Branch Center
- Rockville Center
- Sherwood Center
- Springbrook Center
- Watkins Mill Center
- Wheaton Center

Tutoring sessions are held on Saturday mornings from 8:30 to 11:00 a.m. from October through May. If you are interested, please contact Michael Thomas, Executive Director, on 301.320.6545.

## Get Ready for Golf!

Think spring! The GBTLA 14<sup>th</sup> Annual Golf Tournament will be held on Friday, May 16, 2008 at Hampshire Greens Golf Course in Silver Spring. The tournament is held in the morning—shotgun start at 8:30 a.m.—followed by a great barbeque lunch. Take advantage of the Early Bird Registration by registering before April 16<sup>th</sup>. Tournament fee is \$100 prior to April 16<sup>th</sup> and \$125 after.



It's a great day for a great cause, so sign up now!

Please call the GBTLA office at 301.320.6545 for more information or check the Web site at [www.gbtlearningacademy.org](http://www.gbtlearningacademy.org)

## A Picture is worth a Thousand Words!



*Dr. George B. Thomas, president, and Michael Thomas, executive director, receive funding support from State Farm Insurance*



*Students at the Springbrook Center enjoy Saturday mornings at the GBTLA with Center Director Dr. Marcia Wilson.*



*Elementary students at the Springbrook Center.*

## A HAPPY NEW YEAR FOR OUR SPECIAL PROJECTS



At year's end we reflect on last year's accomplishments and make resolutions for the New Year. With the remarkable success of our Toolkits, Books and Backpacks Projects in 2007, our only resolution for 2008 is to equal and hopefully surpass the \$15,000 raised last year. Thanks to the generosity of MCPSRA members and community friends, needy kindergartners in last summer's Title I Extended Learning Opportunities Summer Adventures in Learning Program (EVO-SAIL) were presented with over 1000 school supplies Toolkits, fourth and fifth graders received 1600 new books and 40 homeless children received backpacks filled with school supplies and books.

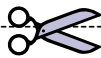
We anticipate a greater number of children in next summer's EVO-SAIL program. Some 65 individuals have already contributed \$3075 toward our goal. We are most grateful for their generosity, caring and commitment to the neediest of our county's school children. Won't you please join them in making a very Happy New Year for these children with your TAX DEDUCTIBLE donation? Thank you.



### MCPS TOOLKITS SPONSORSHIP FORM

Please provide (print clearly) the following information and mail it along with a check (payable to: **MCPS Education Foundation**, with "**Toolkits Project**" on the memo line) to: Mrs. Joan Donovan  
13 Hilton Court, Gaithersburg, MD 20882 – 3521

Name: \_\_\_\_\_  
Address: \_\_\_\_\_  
I would like to sponsor # \_\_\_\_\_ toolkits at \$10 per kit. Donation enclosed: \$ \_\_\_\_\_  
Optional: In memory of \_\_\_\_\_  
In honor of: \_\_\_\_\_  
Send acknowledgement to: \_\_\_\_\_  
\_\_\_\_\_



### GWU NEEDS ADJUNCT SUPERVISORS

The George Washington University Department of Teacher Preparation and Special Education is in need of adjunct supervisors for teacher interns in special education and in secondary education – science, mathematics, ESL, and Spanish for spring 2008.

The secondary education program prepares teacher candidates at the graduate level. Internship placements take place between January 14<sup>th</sup> – May 2<sup>nd</sup>. Supervisors are expected to visit assigned interns at school sites once every two weeks. Adjunct supervisors observe, mentor, and assess progress of teacher candidates as they step into full time teaching responsibilities. Orientation and training is provided to supervisors in use of the Praxis III observation system. Professional development is provided for supervisors in monthly meetings designed to engage faculty in inquiry.

Salary is commensurate with experience and number of interns to be supervised. Mileage and parking at GWU for meetings are covered. The George Washington University is an Equal Opportunity and Affirmative Action Employer. Please send resume and letter of interest to:

Dr. Patricia Tate, Director  
Office of Laboratory Experiences  
The George Washington University  
2134 G. St. NW Room 401  
Washington, DC 20052

### HAVE FUN! MAKE NEW FRIENDS! GET PAID!

Get a head start on your vacation plans! The National Education Association Convention is coming to Washington, DC this summer. Committee volunteers receive \$40 each day worked as well as lunch, snacks, breaks and reimbursement for parking/bus/metro expenses. Hours are approximately 8 a.m. to 6 p.m. Dates are June 30 - July 6. You need not work every day, however consecutive days are encouraged. You need not have been a member of the National Education Association to participate. Volunteers for the two subcommittees (RA Telephone and NEA Fund for Children and Public Education) will be trained.

Over 10,000 NEA members gather to conduct the business of the Association. Effective communication on the floor of the Representative Assembly (RA) is vital. Volunteers for this subcommittee are responsible for staffing and operating the microphone/telephone system used by delegates to communicate with the Presiding Officer and the Assembly. (You do not need to speak on the microphones.)

NEA Fund for Children and Public Education volunteers will assist in the NEA Fund booth by collecting money from individuals wishing to make voluntary contributions to the NEA Fund for Children and Public Education.

For further information contact LeeAnn Kaye at [lakayeneaconvention@comcast.net](mailto:lakayeneaconvention@comcast.net) or 301-598-5480

## WANT A WANT AD?

The MRSPA Board of Directors has agreed to accept advertising. Dimensions and per issue rates are as follows:

Business card	3.0" wide x 2.0" tall	\$35
Quarter page	3.5 " wide x 4.75" tall	\$60
Half page	7.5" wide x 4.75" tall	\$110
Full page	7.5" wide x 10.0" tall	\$200

An ad cannot exceed the above dimensions and should be emailed to the Newsletter Editor as a WORD attachment or as camera ready copy via US mail. WORD formatting will be provided on request to the Newsletter Editor. If you need professional help in following these guidelines, it is available, pro-rated at \$85 per hour, at A.G. Fiorill Printing ([www.fiorillprinting@aol.com](mailto:www.fiorillprinting@aol.com)) or at 301-776-0585 or by FAX at 301-776-0592.

Deadlines for future Newsletters are as follows:

Mar. 6, 2008	for the April 2008 issue
May 1, 2008	for the June 2008 issue
Sept. 4, 2008	for the October 2008 issue
Nov. 6, 2008	for the December 2008 issue

Send advertising copy (email to [zoracamp@yahoo.com](mailto:zoracamp@yahoo.com); surface mail to Newsletter, P.O. Box 4367, Rockville, MD 20849-4367. Mail check payable to MCPSRA (in advance of publication) to Treasurer, P.O. Box 4367, Rockville, MD 20849-4367.

## LINDA GRAY, GRI, SRES

RE/MAX Realty Centre, Inc

Cell: 301-922-1008

Office: 301-591-3407

### FEATURED PROPERTY



\$248,900.

**3100 Adderley Court, Leisure World, MD**  
This 3 bedroom, 2 full bath patio homes feels like single-home living. Faces wooded area, private patio, all appliances are 3 yr or less. Call for your personal tour or Virtual Tour [www.HomesNearAndFar.com](http://www.HomesNearAndFar.com)

### QUESTION OF THE MONTH:

WIN \$25 FOR DINING OUT

Many MCPS schools have SERTS programs to promote efficient & responsible energy use.

What does SERTS stand for?

First 3 correct answers CALLED IN win a \$25. Dining Gift Certificate. Be sure to leave your name & phone number.

## Retirement, a heck of a time to run out of money!

Learn ways that we can help you:

- \* Protect your retirement nest-egg
- \* Guarantee your lifetime income
- \* Leave a legacy to your loved ones



Tom Hendershot  
President  
Hendershot Financial Group

For more information call  
Tom Hendershot at  
(800) 255-8921 x 61135



Hendershot Financial Group  
We help people stay retired well.

Financial representative of and Advisory Services and Securities Offered Through Lincoln Investment Planning, Inc. Registered Investment Advisor, Member FINRA/SIPC Lincoln and Hendershot Financial Group are independently owned and each is responsible for its own business. 203 Brookes Avenue, Gaithersburg, MD 20877 (301) 987-7211 5/07



NURSING & REHABILITATION CENTER



For over 30 years,  
Collingswood has been  
enriching lives with uncommon  
care.

Visit us at:  
[collingswoodnursing.com](http://collingswoodnursing.com)  
299 Hurley Ave, Rockville, MD  
20850

301-762-8900

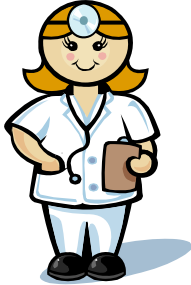
- ◆ Superior Rehabilitation Services
- ◆ Large Screen TVs & Internet Access
- ◆ In-house Dialysis Coming Soon!
- ◆ Private Rooms Available
- ◆ Patios, Gardens and Sunrooms
- ◆ Pet Friendly!



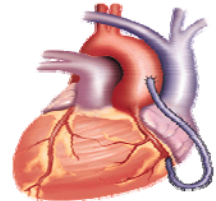
## NEW MEMBERS - FEBRUARY 2008



Cutler, Susan  
Griffin, Marion L.  
Hetrick, Brenda W.  
Porter, Brian J.  
Rosenthal, Paula  
Seidler, Marilyn  
Urick, Nick  
Whitt, Dorothy S.



### WOMEN AND HEART ATTACKS (MYOCARDIAL INFARCTION)



Did you know that women rarely have the same dramatic symptoms men have when experiencing a heart attack? Here is one woman's story.

I had a completely unexpected heart attack at about 10:30 p.m. with NO prior exertion, NO prior emotional trauma that might have caused it. I was sitting quietly and reading. A moment later I felt that awful sensation of indigestion but I hadn't had a bite to eat for hours. The sensation seemed to subside but then little squeezing motions seemed to be racing up my spine until they arrived under my sternum and continued into my throat and then into both jaws.

Now I stopped puzzling about what was happening and the thought of having a heart attack was real. I knew I needed help and walked slowly toward the phone to dial 911. The operator indicated the paramedics would be there immediately. At her direction, I lay down on the floor and then lost consciousness. I awakened briefly when we arrived at the hospital, saw a cardiologist already there in his surgical garb, and tried to answer his questions but again lost consciousness. The cardiologist was able to restart my heart and install two stents to hold open my right coronary artery.

Why is this story important? I want all of you to know what I learned first-hand.

- (1) Be aware when something different and inexplicable is happening in your body. If you feel something unpleasant that you've not felt before, CALL 911. It is better to have a "false alarm" than to risk your life guessing what it might be.
- (2) Do NOT try to drive yourself to the hospital or let your husband drive you. Do NOT call your doctor. You need the equipment the paramedics will bring, principally oxygen, as soon as possible. Your doctor will be notified later.
- (3) Don't assume it couldn't be a heart attack because you have a normal cholesterol count. Elevated cholesterol is rarely the cause of a heart attack unless it is unbelievably high and/or accompanied by high blood pressure. Heart attacks are usually caused by long-term stress and inflammation in the body which dumps all sorts of deadly hormones into your system to sludge things up in there.

Let's be careful and be aware. The more we know the better chance we could survive.



**Women's Art: Women's Vision  
2008 Honorees**

*Honorees were selected based on their amazing art, and their extraordinary vision. For more information on the 2008 Honorees, National Women's History Month, and our Resource Catalog, please visit our website: [www.nwhp.org](http://www.nwhp.org)*

*Judy Chicago*

*Harmony Hammond*

*Edna Hibel*

*Lihua Lei*

*Rose Cecil O'Neill*

*Violet Oakley*

*Jaune Quick-To-See-Smith*

*Faith Ringgold*

*Miriam Schapiro*

*Lorna Simpson*

*Nancy Spero*

*June Claire Wayne*

*Come join the National Women's History Project and A.I.R. Gallery, the oldest women's art gallery in New York City for a very special Women's Art Weekend. The events will begin on Friday, March 28, 2008 at the Puck Building in New York City with a High Tea to honor the 2008 Honorees to be followed by a dinner honoring New York's women's art community.*

*On Saturday, March 29, 2008 there will be a bus tour to the Brooklyn Museum to view the Dinner Party. For more information about cost, package deals, and registration, visit our website [www.nwhp.org](http://www.nwhp.org)*

## HAVE YOU 'HERD' ABOUT THE MOOSEUM?

The James and Macie King Barn, located in South Germantown Recreational Park, was built in the 1930's as a state-of-the-art dairy barn. For over 30 years the barn saw a prize-winning herd of registered Holstein cattle come and go each day, producing milk for nearby creameries. When the Kings retired, the farm was sold to the Montgomery County Parks Department for future development. In the late 1990's South Germantown Park was developed, complete with its dozens of soccer fields. The centerpiece of the site continues to be the King Barn.

The Barn structure was restored in 1999, with new rooms, windows and twin silos, thanks to the efforts of a citizens' group that includes the founding supporters of the King Barn Dairy MOOseum. The MOOseum, working with the Department of Parks, is in the process of finishing the process of upgrading the barn for public assembly. With an ever-increasing collection of artifacts, oral histories and display materials which tell the story of dairying in Montgomery County, the MOOseum is looking forward to opening to the public by 2009.

The MOOseum has had education programs in place for over six years now – reaching out to the young people of the County and telling them the story of our rich dairy heritage. With in-school programs as well as special days at the Barn, these young people, along with their families, have become enthusiastic supporters of the MOOseum.

Our Oral History Project is tapping the rapidly diminishing resource of retired dairy farm owners and laborers, capturing a story that reflects the ethics, resourcefulness and love of the land inherent in those who participate in feeding the Nation.

We welcome supporters and hands-on assistance. We need volunteers to help us with accessioning and conserving donated artifacts and transcribing as well as writing engaging narratives based on oral history interviews. We also need individuals willing to serve as docents and volunteers for staff events and activities at the Barn as well as at sites of outreach exhibits and events.

If you would like to help the MOOseum in some way, please contact Barbara McGraw at 301-229-4385. Barbara is the President of our Board of Directors, and will welcome an opportunity to introduce you to our organization.



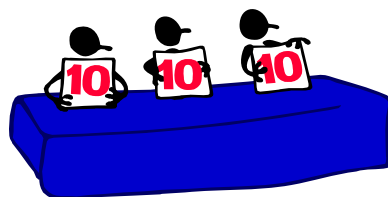
Jerseys on a local farm



King Barn



Visitors churning butter



### WANTED: JUDGES

The Montgomery County Historical Society is looking for judges for the Montgomery County History Day competition on March 15, 2008, at Julius West Middle School in Rockville.

Volunteer judges will be judging projects by middle and high school students. Volunteer times are from **8:30 am – 12 noon** and from **12 noon – 2:30 pm**, with most of the judging in the morning. Judges work in teams of three to judge exhibits, documentaries, research papers, performances or websites.

This year's theme is "Conflict and Compromise in History." Judges need to have

- an interest in history
- familiarity with research techniques
- tact and an ability to deal with adolescents.

If you are interested, please contact Emily Correll at [ecorrell@montgomeryhistory.org](mailto:ecorrell@montgomeryhistory.org) or 301-340-2825. Thank you for your help.

## PARKING INFORMATION

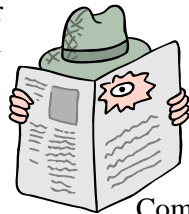


**Day trip parking information will be indicated in each trip description. Overnight trips will leave from Park & Ride lot on Norbeck Rd. & Georgia Ave.**

## YOUR TRAVEL INFORMATION

PLEASE TAKE TIME TO READ THIS IMPORTANT INFORMATION. SHARE IT, ALONG WITH SPECIFIC TRIP INFORMATION, WITH YOUR GUESTS.

1. We all travel at our own risk.
2. There is always some walking involved as we travel. Read each itinerary carefully, keeping in mind your own capabilities.
3. Itineraries, times and details are approximate. Changes are sometimes necessary and unavoidable.
4. Trips are open to members, their families and friends (adults)..
5. Smoking and drinking of alcoholic beverages are not permitted on the coach.
6. About three to five days before a day trip, participants are called to remind them of the day and departure time of the trip. For overnight coach trips, about two weeks prior to the date of departure, a letter with up to date information, including parking details, and one baggage tag per person will be mailed to you.
7. Write a separate check, payable to MCPSRA, for each trip. Include name and date of trip on check...
8. Send check with completed reservation form.
9. Your reservation is definite upon receipt of deposit/full payment, whichever is required. If a trip has to be cancelled because of insufficient numbers of participants needed by the deadline as published, your check will be returned to you. Feel free to call to find out if your reservation and payment were received.
10. Refunds are made only when your space can be filled.
11. Gratuities for driver and local guides are not included in the price of the trip.
12. Anyone interested in insurance for overnight trips should call Ellen at Eyre Tour and Travel at 301-854-6600, ext. 3252 or 410-442-1330, ext. 3252 or 1-800-321-3973, ext. 3252.
13. We do not provide transportation to and from the airport for trips that require flying.



## TRAVEL CO-CHAIRS

Frieda J. Price..... 301-926-2286  
105 N. Summit Ave. #4, Gaithersburg, MD 20877-2935

Mary Ann Davis..... 301-253-6256  
23509 Woodfield Rd., Gaithersburg, MD 20882-3017

## **TRIPS IN PROGRESS – 2008**

At press time, the following trips are in various stages of planning; dates and itineraries are **tentative** as well. We'll keep you posted in each Newsletter as to additions, availabilities or changes. These trips are described in this Newsletter:

- Mar. 12 **International Spy Museum and Kennedy Center Tour**, Washington, DC
- Apr. 2 **Annual Odyssey Luncheon Cruise** Washington, DC
- May 3 **Longwood Gardens**
- May 7 **“Guys and Dolls” at Dutch Apple Theatre**, Lancaster, PA
- May 27 **Andre Rieu Concert**, First Mariner Arena, Baltimore, MD (if tickets become available)
- June 22-27 **Mackinac Island and Dearborn, MI**
- Aug. 3 **Lion King – Kennedy Center**

Descriptions of the following trips will be in later issues:

- July 16 Harrisburg, PA day trip including State House tour and train and boat excursion
- August ? Boston Pops at Wolf Trap
- July and August Additional theatre, concert and/or trips as 2008 schedules are published
- Sept. 2-5 IT'S BOSTON! (City tour, Kennedy Library, a harbor cruise, Salem, etc).
- Sept. 18-27 Cruise to New England and Canadian Maritimes, departing from Baltimore, MD
- Nov. 30- Asheville, NC – Nashville, TN for Holiday Shows and Candlelight Tours
- Dec. 6

## **INTERNATIONAL SPY MUSEUM KENNEDY CENTER TOUR Washington, DC Wednesday, March 12, 2008**

Come with us to visit the world of cloak-and-dagger intrigue and learn what it takes to be a spy. Exhibits tell stories about spies, intelligence operations and deceptions that have changed history. After lunch-on-your-own, we will tour the Kennedy Center featuring the Hall of States, the Hall of Nations, the Center's main theatres and the dozens of paintings, sculptures and other artworks given to the Center by foreign countries.

- 9:00 am Depart Norbeck Park & Ride
- 10:00 am Arrive International Spy Museum  
Lunch –on-your-own. Two options in the museum; gift shop.
- 1:00 pm Depart for Kennedy Center
- 1:30 pm Tour as described above.
- 2:45 pm Depart for Norbeck Park & Ride
- 3:45 pm Arrive at Norbeck Park & Ride

**Included:** Round-trip transportation on EYRE motorcoach; admissions and tours as described above. (Gratuity for driver **NOT** included)

**Cost: \$50 per person**

**DUE: February 10, 2008 – Note date change**

Make check payable to **MCPSRA** and mail with completed Registration form to:

Frieda J. Price 301-926-2286  
105 North Summit Ave., Apt #4  
Gaithersburg, Maryland 20877

=====

**ANNUAL ODYSSEY LUNCHEON CRUISE**

**Washington, DC  
Wednesday, April 2, 2008**



9:00 am Depart from Norbeck Park & Ride  
(Driving tour of memorials as time and traffic permit prior to boarding)  
11:00 am Board ODYSSEY III  
11:30 am - Luncheon and Cruise  
2:00 pm Depart  
3:00 pm Approximate time of return to Norbeck Park & Ride

**Included:** Round-trip transportation on EYRE deluxe motorcoach; luncheon and cruise on ODYSSEY, including tax and gratuity. (Gratuity for driver **NOT** included)

**COST: \$78.00 per person**

**DUE: February 27, 2008**

Make check payable to **MCPSRA** and mail with completed Registration form to:

Frieda J. Price 301-926-2286  
105 North Summit Ave., Apt #4  
Gaithersburg, Maryland 20877

=====

**IT'S SPRINGTIME AT LONGWOOD GARDENS**

**Kennett Square, Pennsylvania  
Saturday, May 3, 2008**



The last time we visited Longwood Gardens was in 2006 for the Chrysanthemum Festival. Come along to view glorious displays of springtime blossoms in 1,050 acres of gardens, woodlands, and meadows as well as the Conservatory. Included is admission to the Heritage exhibit in the Peirce-du Pont House, the oldest building on the grounds. As usual, the Pipe Organ and Gallery will be open. Lunch on-your-own in the Cafeteria or

Terrace Tea Room. The Gift Shop provides plants and unique treasures.

8:00 am Depart Norbeck Park & Ride  
10:30 am Approximate arrival at Longwood  
2:30 pm Depart from Longwood Gardens  
5:00 pm Approximate return to Norbeck Park & Ride

**Included:** Round-trip transportation on EYRE deluxe motorcoach; admission to Longwood Gardens; taxes and gratuities. (Gratuity for driver **NOT** included)

**Cost: \$51.00 per person**

**DUE: March 31, 2008.**

Make check payable to **MCPSRA** and mail with completed Registration form to:

Frieda J. Price 301-926-2286  
105 North Summit Ave., Apt #4  
Gaithersburg, Maryland 20877

=====

**GUYS AND DOLLS**

**Dutch Apple Theatre, Lancaster, PA  
Wednesday, May 7, 2008**

This favorite musical never grows dull! This production includes all the familiar songs (*Luck be a Lady Tonight; If I Were a Bell; Sit Down, You're Rockin' the Boat; and Guys and Dolls*). In desperation to find money for his floating crap game, Nathan Detroit bets high-rolling gambler Sky Masterson \$1000 that he can't make the next lady he sees fall in love with him. Along comes Sarah Brown, a prim and proper Salvation Army girl and the rest, as they say, is history!

9:00 am Depart Norbeck Park & Ride.  
6:30 pm Approximate return to Park & Ride

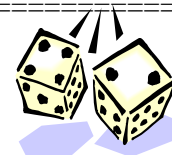
**Included:** Round-trip transportation on EYRE motorcoach; admission to theatre and dinner, including tax and gratuities. (Gratuity for driver **NOT** included)

**Cost: \$89.00 per person**

**Date Due: April 2, 2008**

Make check payable to **MCPSRA** and mail with completed Registration form to:

Frieda J. Price 301-926-2286  
105 North Summit Ave., Apt #4  
Gaithersburg, Maryland 20877



**MACKINAC ISLAND AND DEARBORN, MI**  
**June 22 – 27, 2008**

**Cost: \$1299.00 per person, double occupancy**  
**\$1599.00 single occupancy**

**Day 1 - June 22** Depart for our six-day, five night journey to the state of Michigan, highlighting **Dearborn's Ford Museum and Greenfield Village, Mackinac Island and Frankenmuth.**

**Due: \$400.00 Deposit due March 14, 2008**  
**Balance due May 15, 2008**

**7:30 am** Depart Rockville Civic Center on Edmonston Drive, Rockville. We overnight in Dearborn, MI. Dinner included.



Make check payable to **MCPSRA** and mail with completed Registration form to:

Mary Ann Davis..... 301-253-6256  
23509 Woodfield Rd., Gaithersburg, MD 20882-3017

**Day 2** After an included continental breakfast, we tour the Ford Museum and Greenfield Village. The Museum commemorates 300 years of American experience; celebrates American innovative genius; and displays such national treasures as the Rosa Parks bus, presidential limousines, the chair in which Lincoln was assassinated, and a folding camp bed used by George Washington. Visit historic homes and workshops of famous Americans such as the Wright Brothers, Thomas Edison, Henry Ford and Robert Frost. Enjoy lunch on your own in the Museum or the Village. Enjoy an included dinner and tour at the home of Edsel and Elinor Ford in Grosse Pointe Shores

**NOTE:** If you prefer to pay by credit card, call **Ellen at Eyre Tours (1-800-321-3973 x3252)**. Please mention **MCPSRA**. Mail only the Reservation Form to Mary Ann; **DO NOT SEND HER ANY CREDIT CARD INFORMATION**.

**Day 3** After an included breakfast, we travel north to Mackinaw City and take the ferry to the Island. We will be driven by horse and buggy to the Lake View Hotel, our home for two nights. A free afternoon precedes our included dinner at the Lake View Hotel.



**LION KING**  
**Kennedy Center, Washington, DC**  
**August 3, 2008**

**Day 4** After an included breakfast, we will enjoy a two-hour horse-drawn carriage ride and tour of Mackinac, including Fort Mackinac. Lunch at the Grand Hotel is included. Free afternoon and evening with dinner-on-your-own.

Join us for this matinee performance of a musical classic! Children will be welcome provided they will be at least first graders by September 2008. We also request that at least one MCPSRA member accompanies each party. We have a limited number of tickets for this performance. Please send payment with registration form and we will honor reservations on a first-come basis.

11:30 am Depart Norbeck Park & Ride  
1:30 pm Show Time  
5:30 pm Approximate return to Park & Ride

**Day 5** After an included breakfast, we depart to ferry back to the mainland where we meet the motorcoach and travel south to Frankenmuth. There we will have free time and an included dinner. Then we travel to Dearborn for our night's lodging.

**Included:** Round trip transportation on EYRE motorcoach, admission to show and taxes. (Gratuities for driver **NOT** included)

**Day 6** After an included breakfast we depart for Rockville with rest and food stops enroute.

**Cost: \$140.00 per person (orchestra seats)**  
**Due: June 25, 2008**

**6:30 pm** Approximate arrival back in Rockville

Make check payable to **MCPSRA** and mail with completed Registration form to:

**Included:** Round-trip transportation on EYRE motorcoach, including tolls; 5 nights accommodations, including baggage handling and gratuities; 5 breakfasts, 1 lunch at Grand Hotel, 4 dinners including taxes and gratuities; admission to attractions as described above. Does **NOT** include gratuities for driver or local guides.

Mary Ann Davis..... 301-253-6256  
23509 Woodfield Rd., Gaithersburg, MD 20882-3017

**TRIP RESERVATION FORM: International Spy Museum/Kennedy Center March 12, 2008**

Name \_\_\_\_\_ Phone # \_\_\_\_\_

Name \_\_\_\_\_ Phone # \_\_\_\_\_

Member of MCPSRA? Yes \_\_\_ No \_\_\_ If not, guest of: \_\_\_\_\_

Total # reservations \_\_\_\_\_ Total amount enclosed \_\_\_\_\_ Make check payable to MCPSRA.



**TRIP RESERVATION FORM: Annual Odyssey Luncheon Cruise April 2, 2008**

Name \_\_\_\_\_ Phone # \_\_\_\_\_

Name \_\_\_\_\_ Phone # \_\_\_\_\_

Member of MCPSRA? Yes \_\_\_ No \_\_\_ If not, guest of: \_\_\_\_\_

Total # reservations \_\_\_\_\_ Total amount enclosed \_\_\_\_\_ Make check payable to MCPSRA



**TRIP RESERVATION FORM: It's Spring at Longwood Gardens May 3, 2008**

Name \_\_\_\_\_ Phone # \_\_\_\_\_

Name \_\_\_\_\_ Phone # \_\_\_\_\_

Member of MCPSRA? Yes \_\_\_ No \_\_\_ If not, guest of: \_\_\_\_\_

Total # reservations \_\_\_\_\_ Total amount enclosed \_\_\_\_\_ Make check payable to MCPSRA



**TRIP RESERVATION FORM: "Guys and Dolls"- Dutch Apple Dinner Theatre May 7, 2008**

Name \_\_\_\_\_ Phone # \_\_\_\_\_

Name \_\_\_\_\_ Phone # \_\_\_\_\_

Member of MCPSRA? Yes \_\_\_ No \_\_\_ If not, guest of: \_\_\_\_\_

Total # reservations \_\_\_\_\_ Total amount enclosed \_\_\_\_\_ Make check payable to MCPSRA.



**TRIP RESERVATION FORM: Mackinac Island, MI June 22 - 27, 2008**

Name \_\_\_\_\_ Phone # \_\_\_\_\_

Address \_\_\_\_\_ Zip \_\_\_\_\_

Name \_\_\_\_\_ Phone # \_\_\_\_\_

Address \_\_\_\_\_ Zip \_\_\_\_\_

Member of MCPSRA? Yes \_\_\_ No \_\_\_ If not, guest of: \_\_\_\_\_

Total # reservations \_\_\_\_\_ Total amount enclosed \_\_\_\_\_ Make check to MCPSRA

Single \_\_\_\_\_ Double \_\_\_\_\_ Smoking \_\_\_\_\_ Non-smoking \_\_\_\_\_



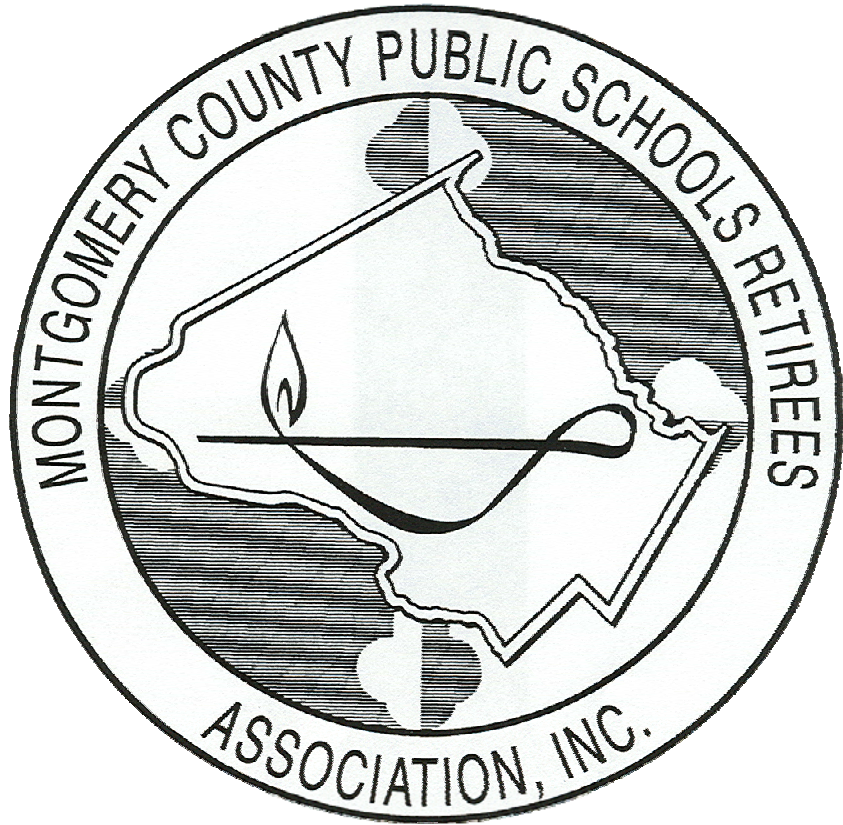
**TRIP RESERVATION FORM: Lion King - Kennedy Center August 3, 2008**

Name \_\_\_\_\_ Phone # \_\_\_\_\_

Name \_\_\_\_\_ Phone # \_\_\_\_\_

Member of MCPSRA? Yes \_\_\_ No \_\_\_ If not, guest of: \_\_\_\_\_

Total # reservations \_\_\_\_\_ Total amount enclosed \_\_\_\_\_ Make check payable to MCPSRA



**DIRECTIONS TO WILLOW TREE INN**  
 At the Montgomery Village Golf Club  
 19550 Montgomery Village Avenue  
 Gaithersburg, MD 301-948-8832



**MCPSRA Luncheon**  
**Thursday, February 28, 2008**

- Take Exit #11 off I-270. Go north on Montgomery Village Avenue, through nine traffic lights.
- After you pass the traffic light at Club House Road, get into the left lane.
- Take the next left into the entrance to the Willow Tree Inn.
- Pass the upper level parking lot on your immediate left.
- Bear left on the drive which takes you to the lower parking lot.
- Enter the Inn by the stairs or ramp adjacent to the lower lot.



**Salad**

**Grilled Salmon**  
**OR**  
**Chicken Marsala**  
**OR**  
**Pasta Primavera with Marinara Sauce**

**Hot Rolls**

**Lemon Cake**

**Coffee or Tea**

**Please be aware that if Montgomery County Public Schools are closed that day, the luncheon is cancelled. If there is a delayed opening of any kind, the luncheon will be held.**

**Continue to save clean plastic bottle caps, particularly colored ones, for the toolkits. Bring them to the next luncheon meeting. Thank you.**



**RESERVATIONS FOR MCPSRA LUNCHEON/BUSINESS MEETING**  
**Thursday, February 28, 2008 at the Willow Tree Inn**

**Gathering: 11:00 a.m.      Business Meeting: 11:30 a.m.      Luncheon: 12:00 Noon      Program**

**Price of Luncheon: \$17.00**

**CIRCLE ENTRÉE CHOICE**

Name. \_\_\_\_\_ Phone \_\_\_\_\_ **Salmon    Chicken Marsala    Pasta**

Name. \_\_\_\_\_ Phone \_\_\_\_\_ **Salmon    Chicken Marsala    Pasta**

**Reservations for 1 or 2 @ \$17.00      Total: \$ \_\_\_\_\_**

**Mail reservation form and check PAYABLE TO MCPSRA to:**

**Angelina Goffredo**  
**5304 Flanders Avenue, Kensington, MD 20895-1139**  
**For information: 301-942-2573**

**YOUR RESERVATION FORM AND CHECK MUST BE RECEIVED BY FEBRUARY 25, 2008.**

**MCPSRA Luncheon/Business Meeting**

**Thursday, February 28, 2008**

**THE WILLOW TREE INN**

Gathering: 11:00 a.m. Business Meeting: 11:30 a.m.

Luncheon: 12:00 noon

Program

The MCPSRA Newsletter is published in  
October, December, February, April, and June

**This is the February 2008 issue.**



**WWW.MCPSRETIREES.ORG**  
**MONTGOMERY COUNTY PUBLIC**  
**SCHOOLS RETIREES ASSOCIATION, INC.**  
**P. O. BOX 4367**  
**ROCKVILLE, MD 20849-4367**

---

**RETURN SERVICE REQUESTED**



**DATED MATERIAL**