

AT Quick Guide

SOLO Passwords

What are the passwords for SOLO Network?

The student password is 123456

The teacher password is school

What are the passwords for SOLO standalone version?

There is no student password

The teacher password is school

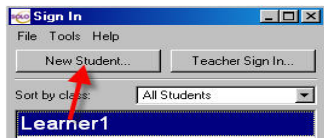
The admin password is Admin1

How do I add students in SOLO Network?

You need to use the Network Central application, which is found in Staff Applications.

How do I add students in Solo Standalone?

Launch SOLO and click the New Student button



What's the password to Network Central?

It is xadminxx where the xxx are your school number. So, for example, if your school number is 678, then your password to Network Central is 6admin78

I can't find a Network Central icon in Staff Applications

Perhaps you don't have the network version of SOLO. Only Tech Mod 08 schools have that version.

I don't know what Tech Mod year I am

Find your school in this list:

http://montgomeryschoolsmd.org/departments/hiat/tech_quick_guides/techmod_schools.shtm