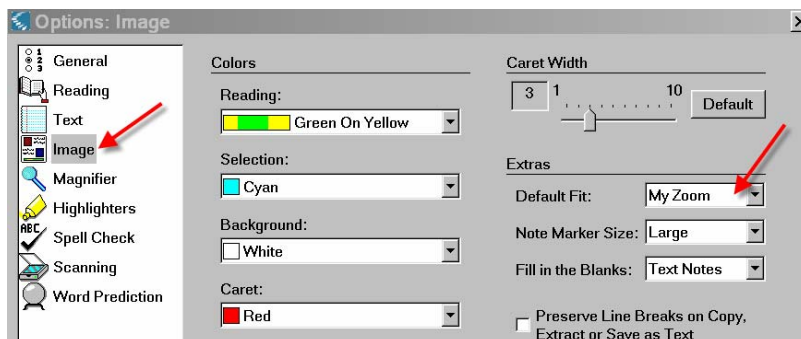


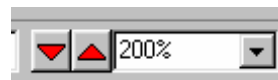
## Setting the default “Zoom” for all pages of a Kurzweil file

Kurzweil defaults to a set “zoom” or page view size. While you can increase the individual page size using the Reading Toolbar, when you go to the next page, the page size may default to a different size. To set a default size, so that all pages open in the same view size, follow the directions below.

1. To set the default fit, go to the menu bar and select Tools > Options. Click on “Image” in the left navigation window. Set the default fit to ‘My Zoom.’

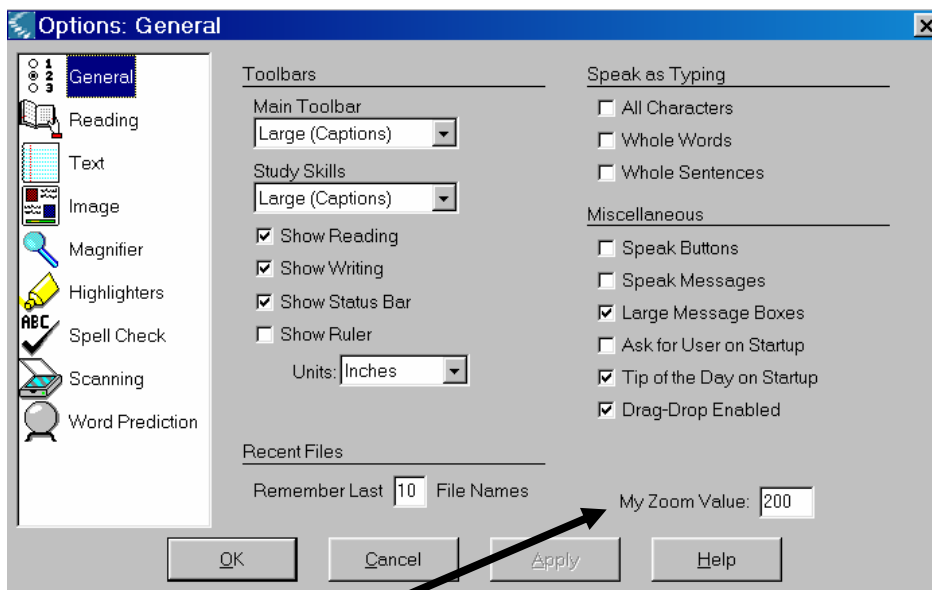


2. With your document open in Kurzweil, enlarge a page using the zoom arrows on the reading toolbar to get to your preferred view size.



3. Note the preferred value of the zoom (e.g. 200%)

4. Go to Tools > Options > General



5. Set the My Zoom Value. Click OK