



Montgomery County Public Schools  
Department of Facilities Management  
School Energy and Recycling Team  
240-314-1090 or Recycling@mcpsmd.org

## Maximo Ordering Photo Sheet Recycling Containers

The following recycling containers should only be used for collecting recyclables. Recycling containers shall not be used for trash. Please inventory your school to maximize the use of recycling bins prior to placing orders. All recycling supplies should be ordered through MAXIMO.

**#C-1**  
Recycling Deskside bins  
(7 gallons)



**#C-3**  
Slim Jim container (23 gallons)



**#C-4**  
Slim Jim lid for bottles and cans  
(Fits Slim Jim 23 gallon container C-3)



**#C-5**  
Slim Jim lid for paper  
(Fits Slim Jim 23 gallon container C-3)



**#C-10**  
Brute 32 gallon container  
(no lid available)



**#C-12**  
Dolly for 32 gallon Brute



Items are available to schools through Maximo while funds are available.  
Some items take up to four weeks for delivery.



Montgomery County Public Schools  
 Department of Facilities Management  
 School Energy and Recycling Team  
 240-314-1090 or Recycling@mcpsmd.org

## Recycling Posters

POSTERS

#P-1

Recyclable Materials Flow Chart



POSTERS

#P-2-English

Green kids holding earth



POSTERS

#P-2S-Spanish

Green kids holding earth



POSTERS

#P-7

Earth Recycling



POSTERS

#P-8

I Recycle



POSTERS

#P-9

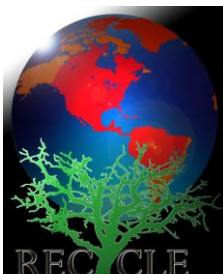
Recycle Coupon



POSTERS

#P-10

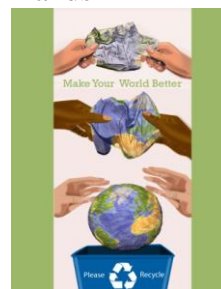
Earth Tree



POSTERS

#P-11

Hands

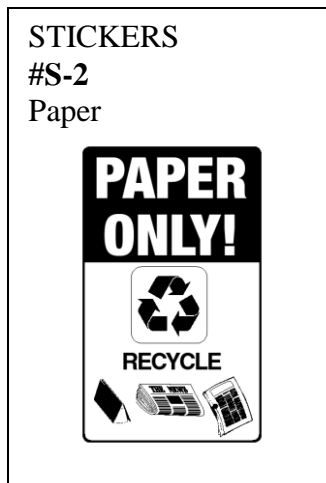


Items are available to schools through Maximo while funds are available.  
 Some items take up to four weeks for delivery.



Montgomery County Public Schools  
Department of Facilities Management  
School Energy and Recycling Team  
240-314-1090 or Recycling@mcpsmd.org

## Recycling Stickers



Recommend two stickers per container.

Items are available to schools through Maximo while funds are available.  
Some items take up to four weeks for delivery.