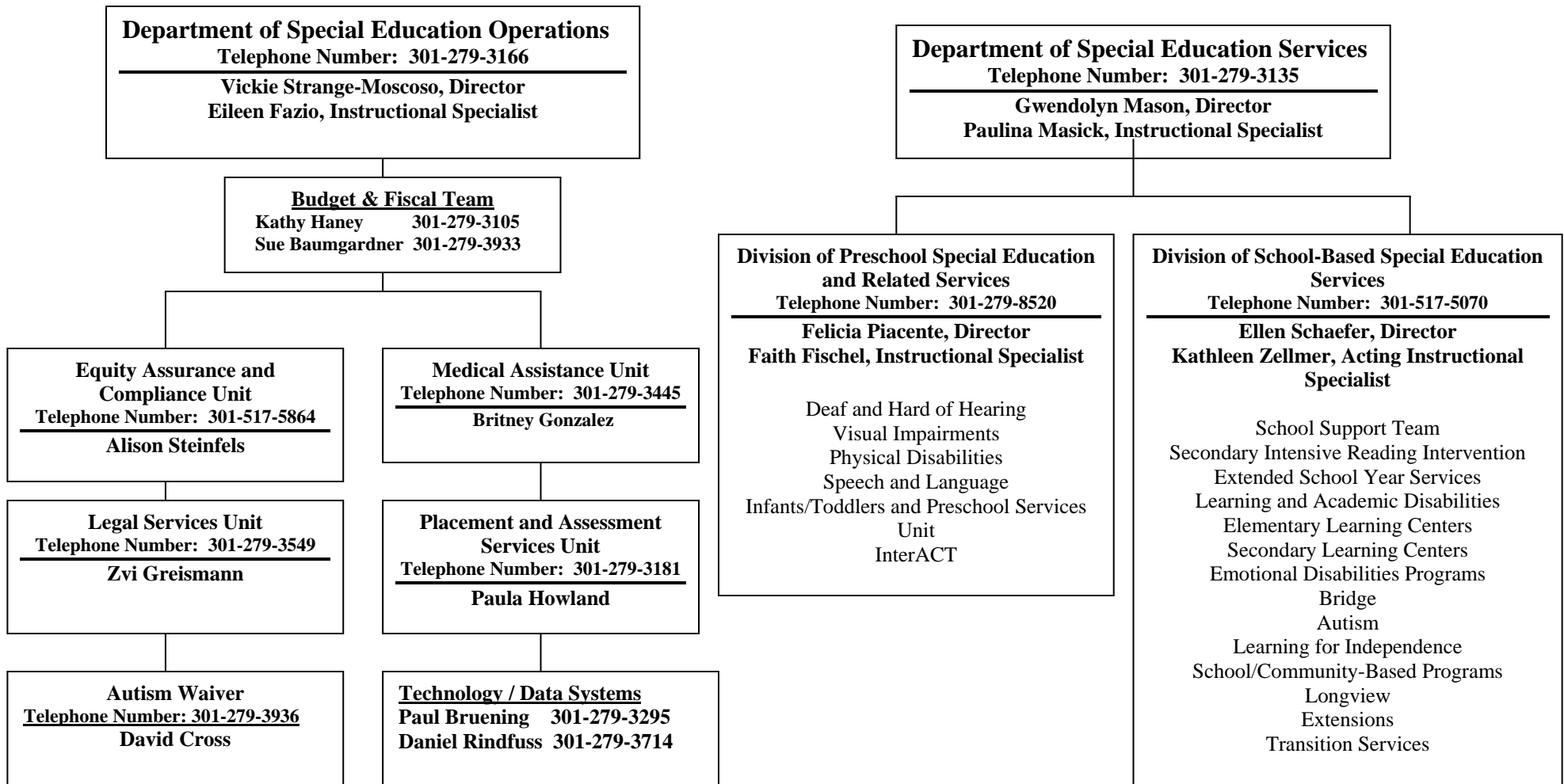


**OFFICE OF SPECIAL EDUCATION AND STUDENT SERVICES**  
 Organizational Chart  
 June 2007



**Department of Special Education Operations**

Telephone Number: 301-279-3166

Vickie Strange-Moscoco, Director  
 Eileen Fazio, Instructional Specialist

**Budget & Fiscal Team**

Kathy Haney 301-279-3105  
 Sue Baumgardner 301-279-3933

**Equity Assurance and Compliance Unit**

Telephone Number: 301-517-5864

Alison Steinfels

**Legal Services Unit**

Telephone Number: 301-279-3549

Zvi Greismann

**Autism Waiver**

Telephone Number: 301-279-3936

David Cross

**Medical Assistance Unit**

Telephone Number: 301-279-3445

Britney Gonzalez

**Placement and Assessment Services Unit**

Telephone Number: 301-279-3181

Paula Howland

**Technology / Data Systems**

Paul Bruening 301-279-3295

Daniel Rindfuss 301-279-3714

**Department of Special Education Services**

Telephone Number: 301-279-3135

Gwendolyn Mason, Director  
 Paulina Masick, Instructional Specialist

**Division of Preschool Special Education and Related Services**

Telephone Number: 301-279-8520

Felicia Piacente, Director  
 Faith Fischel, Instructional Specialist

Deaf and Hard of Hearing  
 Visual Impairments  
 Physical Disabilities  
 Speech and Language  
 Infants/Toddlers and Preschool Services Unit  
 InterACT

**Division of School-Based Special Education Services**

Telephone Number: 301-517-5070

Ellen Schaefer, Director  
 Kathleen Zellmer, Acting Instructional Specialist

School Support Team  
 Secondary Intensive Reading Intervention  
 Extended School Year Services  
 Learning and Academic Disabilities  
 Elementary Learning Centers  
 Secondary Learning Centers  
 Emotional Disabilities Programs  
 Bridge  
 Autism  
 Learning for Independence  
 School/Community-Based Programs  
 Longview  
 Extensions  
 Transition Services