



BURNT MILLS ELEMENTARY SCHOOL

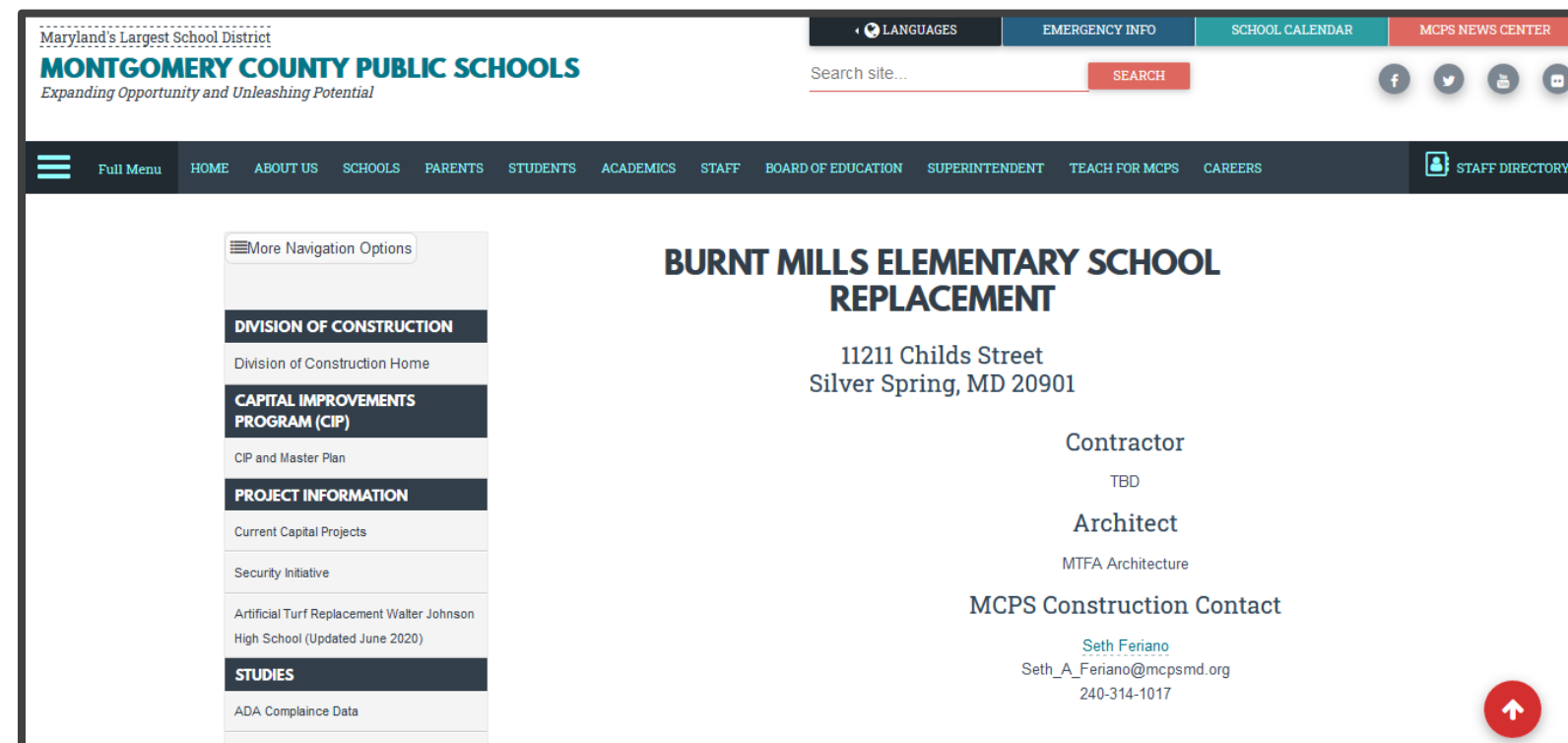
WORK SESSION #2

AUGUST 12, 2020



BURNT MILLS PROJECT SPECIFIC WEBSITE:

<https://www.montgomeryschoolsmd.org/departments/facilities/construction/project/burntmillses.aspx>



PROJECT CONTACT:

Seth Feriano

MCPS Project Manager

Seth_A_Feriano@mcpsmd.org

240-314-1017

1. Remain muted unless invited to speak – video is optional.
2. Sign in through the chat function. Provide the following information:
 - a. Full name
 - b. Email address
 - c. Affiliation
3. Submit questions through the chat function. We'll pause periodically to address them.



AGENDA

1. Team introductions

2. Process and program

3. Site analysis

4. Vision for the school

5. Initial design concept review

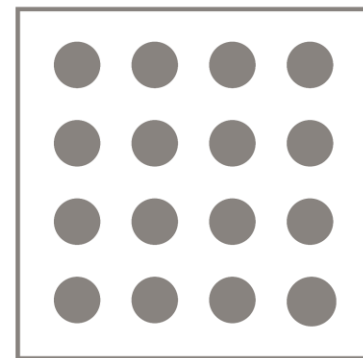
6. Refined design concepts



TEAM INTRODUCTIONS



Montgomery County
Public Schools



MTFA
architecture

- Replacement School: 66,600 NSF
- Capacity: 647 Students (Master Planned for 740)
- Site Area: 13.78 Acres / 7.95 Usable
- Parking: 100 spaces
- Site Circulation: Expanded bus loop and parking,
dedicated drop off, pedestrian accessibility



PROCESS



- Feasibility Study (Addition / Improvements) October 2013
- Programming / Schematic Design July 2020 – November 2020
- Design Development / Construction Documents December 2020 – May 2021
- Bidding December 2021
- Construction February 2022 – August 2023

PHASES



BURNT MILLS ELEMENTARY SCHOOL – EXISTING CONDITIONS



BURNT MILLS ELEMENTARY SCHOOL ADDITION

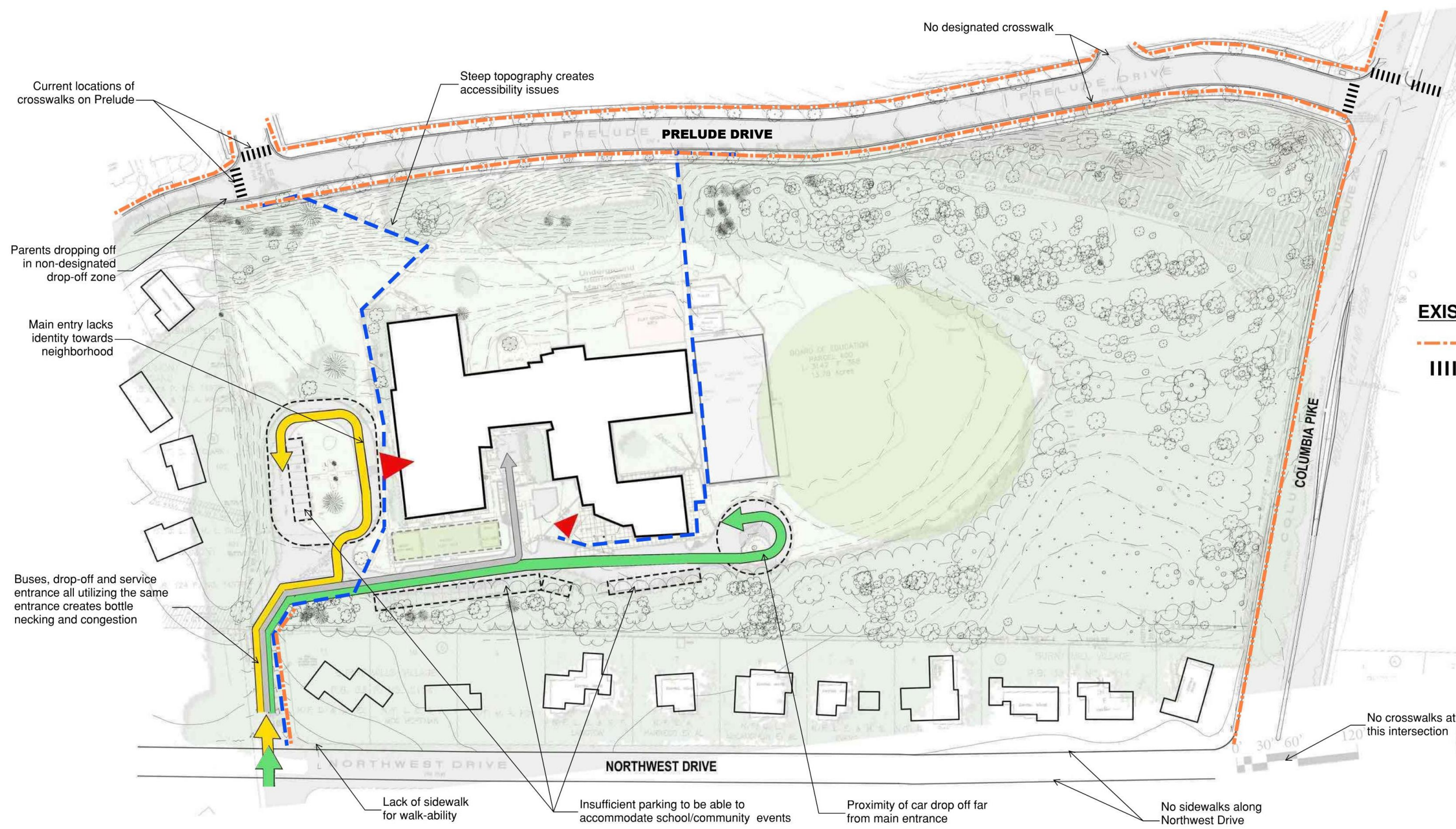
FEASIBILITY STUDY



OCTOBER 2013



BURNT MILLS ELEMENTARY SCHOOL – EXISTING SITE DIAGRAM



CIRCULATION SYMBOLS LEGEND:

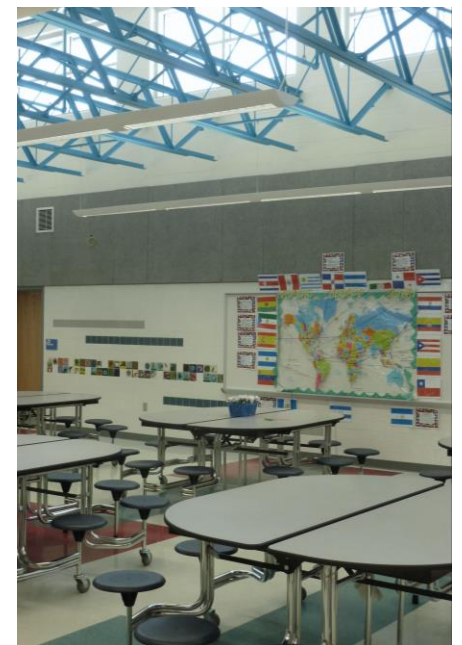
- BUS ROUTE
- SERVICE ROUTE
- CAR ROUTE
- PEDESTRIAN ROUTE
- INTERNAL CIRCULATION
- PROMINENT ENTRANCES

EXISTING SURROUNDING SITE SYMBOLS LEGEND:

- EXISTING SIDEWALKS AROUND SCHOOL SITE
- EXISTING CROSSWALKS

BURNT MILLS' VISION FOR THE SCHOOL

- Represent and serve the community
- Support family outreach and community events
- Welcoming and comfortable
- Abundant daylight and views
- Green space and outdoor learning spaces
- Flexible collaboration and teaching spaces
- Safety and security
- Adequate storage
- Arrange shared spaces to minimize noise and disruptions



WHAT WE HEARD – INITIAL CONCEPT FEEDBACK



Site:

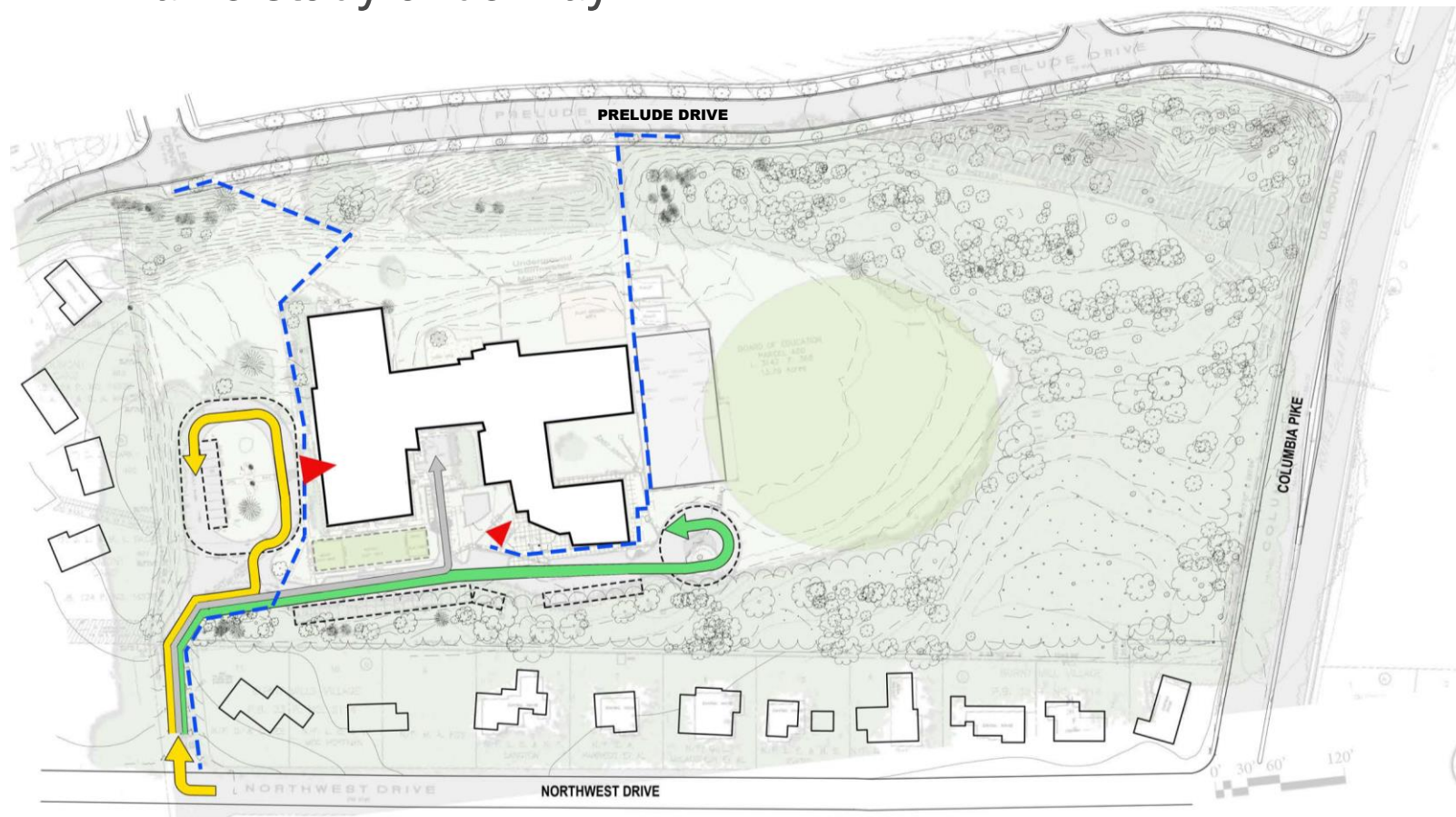
1. Separate car and bus traffic to multiple streets to improve safety and congestion.
2. Loading dock should be located away from child play areas with convenient access to kitchen.
3. Play fields and site elements should generally fit within existing tree line.
4. Early childhood play areas directly outside of classrooms, with visibility from admin if possible.

Building:

1. Entry identity should be close, orienting, and prominent from arrival.
2. Administrative area should have visual control of student drop off, bus drop off, and play fields for safety and security.
3. Media Center should have a prominent civic identity near entry as a visual icon and hub for the community.
4. Gym and Multipurpose should have direct orienting access and be secured as a civic wing separate from classrooms.
5. Provide a secure courtyard, flex spaces, and “maker space” for indoor/outdoor activity and flexible teaching.

VEHICULAR ACCESS

- Maximize safety by eliminating conflicts between forms of transportation
- Disperse traffic to multiple access points to reduce neighborhood impact
 - Access to Columbia Pike/US-29?
- Maximize on-site parking to limit off-site parking
- Ensure accessible routes from all points on site to right-of-way
- Traffic study underway



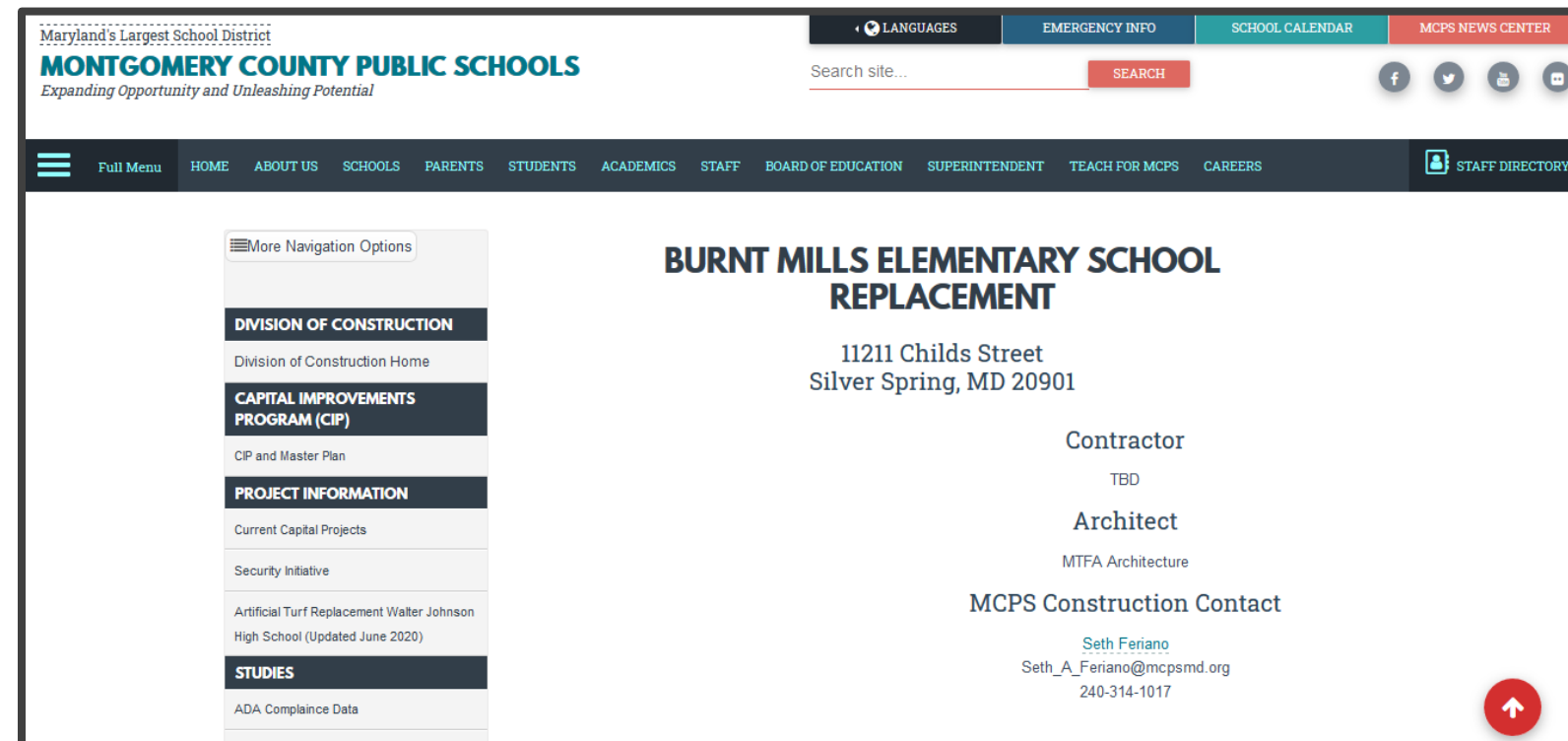
NEXT STEPS

- Review and incorporate what we heard today
- Continue to develop and refine design concepts
- Present progress to the community on a future date



BURNT MILLS PROJECT SPECIFIC WEBSITE:

<https://www.montgomeryschoolsmd.org/departments/facilities/construction/project/burntmillses.aspx>



PROJECT CONTACT:

Seth Feriano

MCPS Project Manager

Seth_A_Feriano@mcpsmd.org

240-314-1017





Montgomery County Public Schools