



# WOODLIN ELEMENTARY SCHOOL REPLACEMENT MONTGOMERY COUNTY PUBLIC SCHOOLS

COMMUNITY MEETING #1 - JUNE 23, 2020



CONTENT WILL BE AVAILABLE JUNE 25TH 2020

WEBSITE:

[HTTPS://WWW.MONTGOMERYSCHOOLSMD.ORG/DEPARTMENTS/FACILITIES/CONSTRUCTION/PROJECT/WOODLINES.ASPX](https://www.montgomeryschoolsmd.org/departments/facilities/construction/project/woodlines.aspx)

PROJECT CONTACT: KENNETH FUTCH

PROJECT MANAGER

MCPS – DIVISION OF CONSTRUCTION

EMAIL: [KENNETH\\_R\\_FUTCH@MCPSMD.ORG](mailto:KENNETH_R_FUTCH@MCPSMD.ORG)

OFFICE: (240) 314 – 1000

DIRECT: (240) 314 – 1015

# AGENDA

1

TEAM INTRODUCTIONS

2

MEETING OBJECTIVES

3

GOALS & VISION

4

EXISTING SITE ANALYSIS

5

DESIGN CONCEPTS



# TEAM INTRODUCTIONS

---

- » MONTGOMERY COUNTY PUBLIC SCHOOLS
- » WOODLIN ELEMENTARY SCHOOL PRINCIPAL & STAFF
- » THE COMMUNITY & PTA
- » ADTEK
- » DESIGN COLLECTIVE



# GOALS & VISION

---



# GOALS & VISION

---

1. Bright, daylit learning spaces
2. Safety and security
3. Green space and outdoor learning spaces
4. Collaboration spaces for students and teachers
5. Adequate storage for teacher's materials
6. Inclusion of special education students
7. Easy and intuitive access and flow within the building
8. New design to respect the context of the neighborhood
9. Resolve traffic issues with buses and cars in the neighborhood





# PROGRAM GOALS

---

- » REPLACEMENT SCHOOL : 61,500 NSF/ 90,000 GSF
- » CAPACITY: 653 STUDENTS (MASTER PLANNED FOR 745) with a 740 core.
- » SITE AREA: 10.4 ACRES / 6.5 USABLE
- » PARKING : 100 SPACES DESIRED
- » SITE CIRCULATION : NEW BUS LOOP ON-SITE, EXPANDED PARKING LOT, SEPARATE PARENT / DAY CARE DROP-OFF



# PROJECT SCHEDULE

---

- » PROGRAMMING / SCHEMATIC DESIGN April 2020
- » DESIGN DEVELOPMENT / CONSTRUCTION DOCS August 2020 - May 2022
- » BIDDING October 2022
- » CONSTRUCTION January 2023 - July 2024





AERIAL

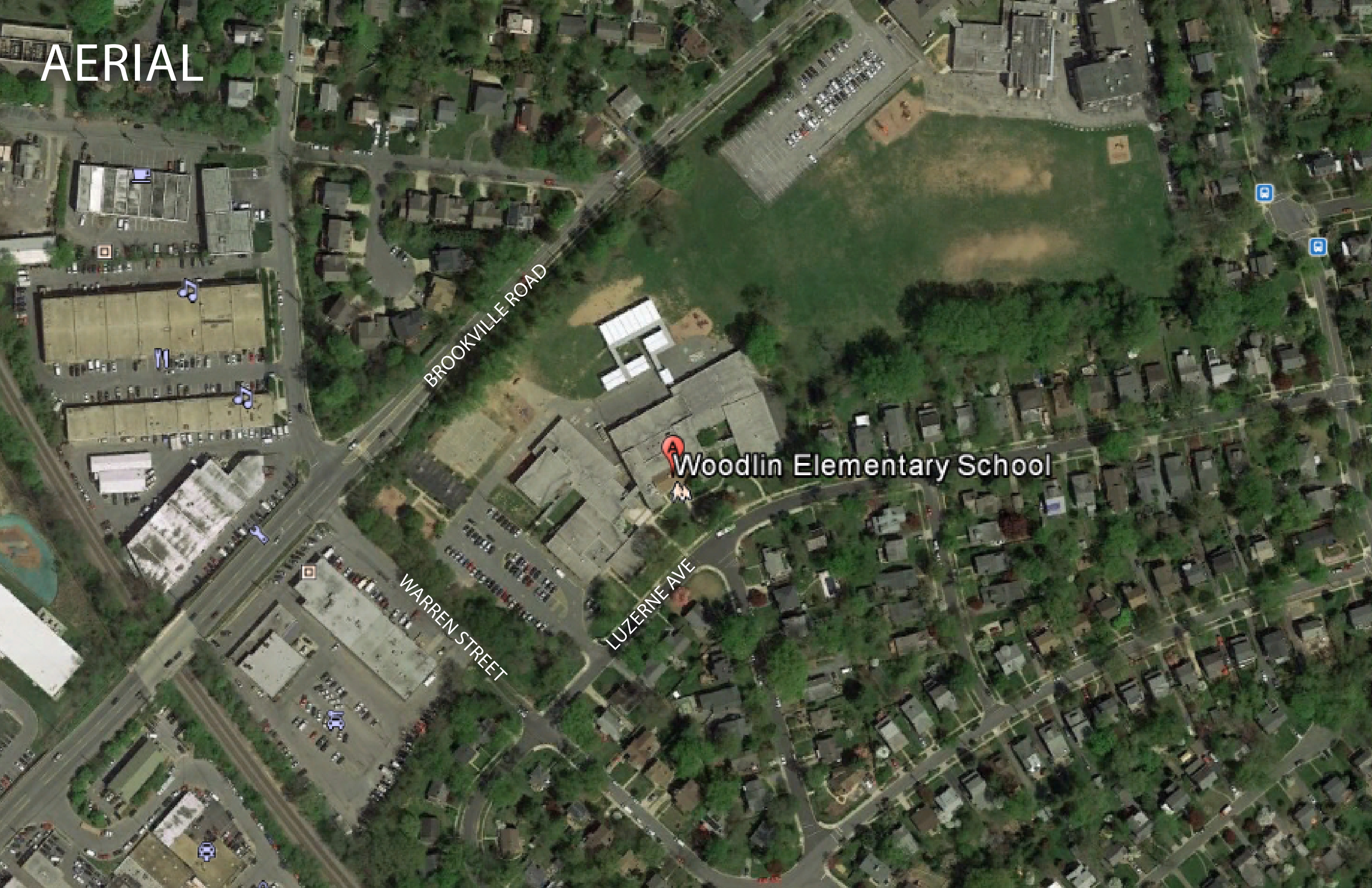
BROOKVILLE ROAD



Woodlin Elementary School

WARREN STREET

LUZERNE AVE





# EXISTING SITE DIAGRAM



- » Preference for car traffic to access the building from Luzerne Avenue
- » Buses and service access can use Brookville Road or Warren Street to reduce traffic on Luzerne Avenue
- » Traffic study will need to be conducted when school is back in session









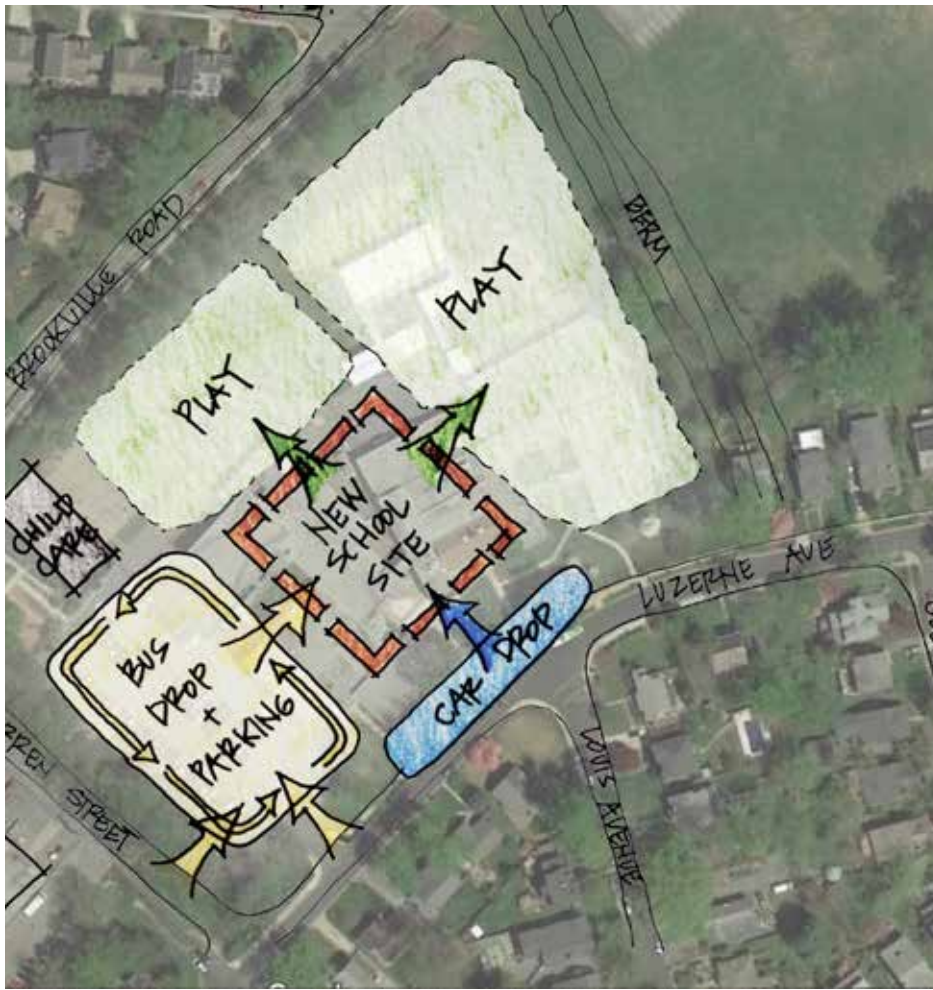




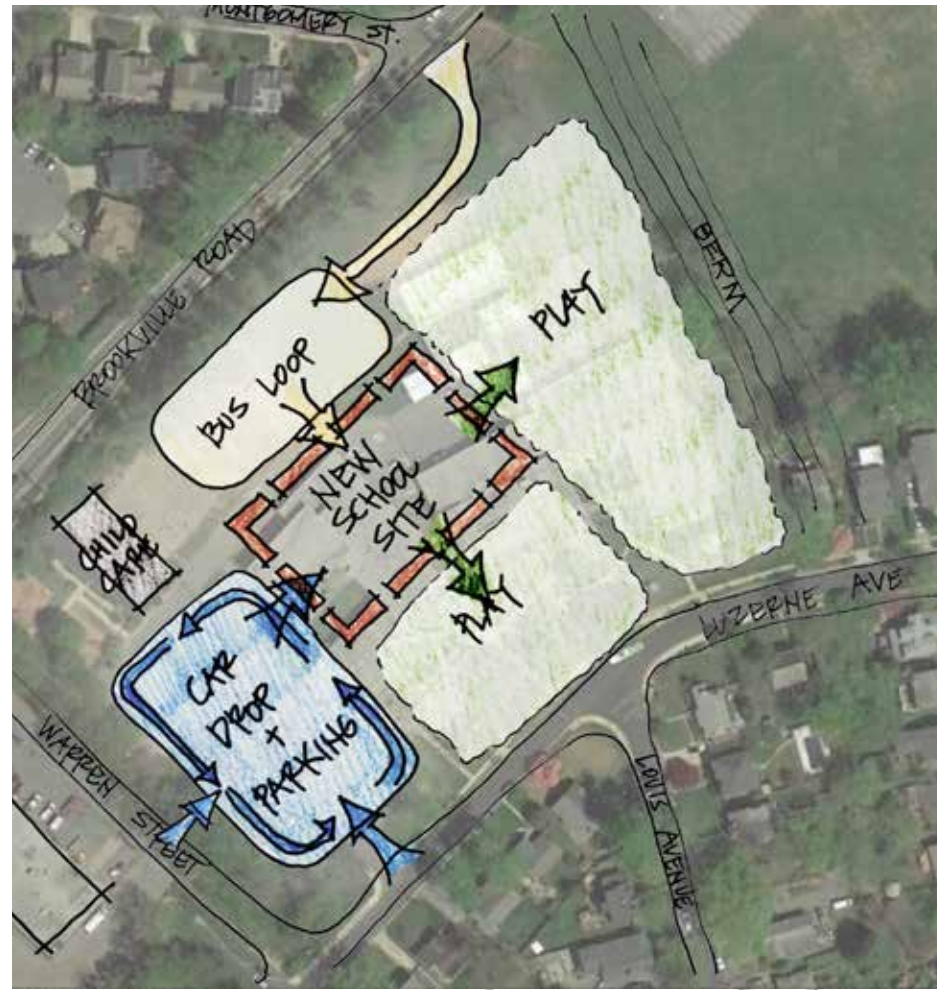


# A SCHEMES

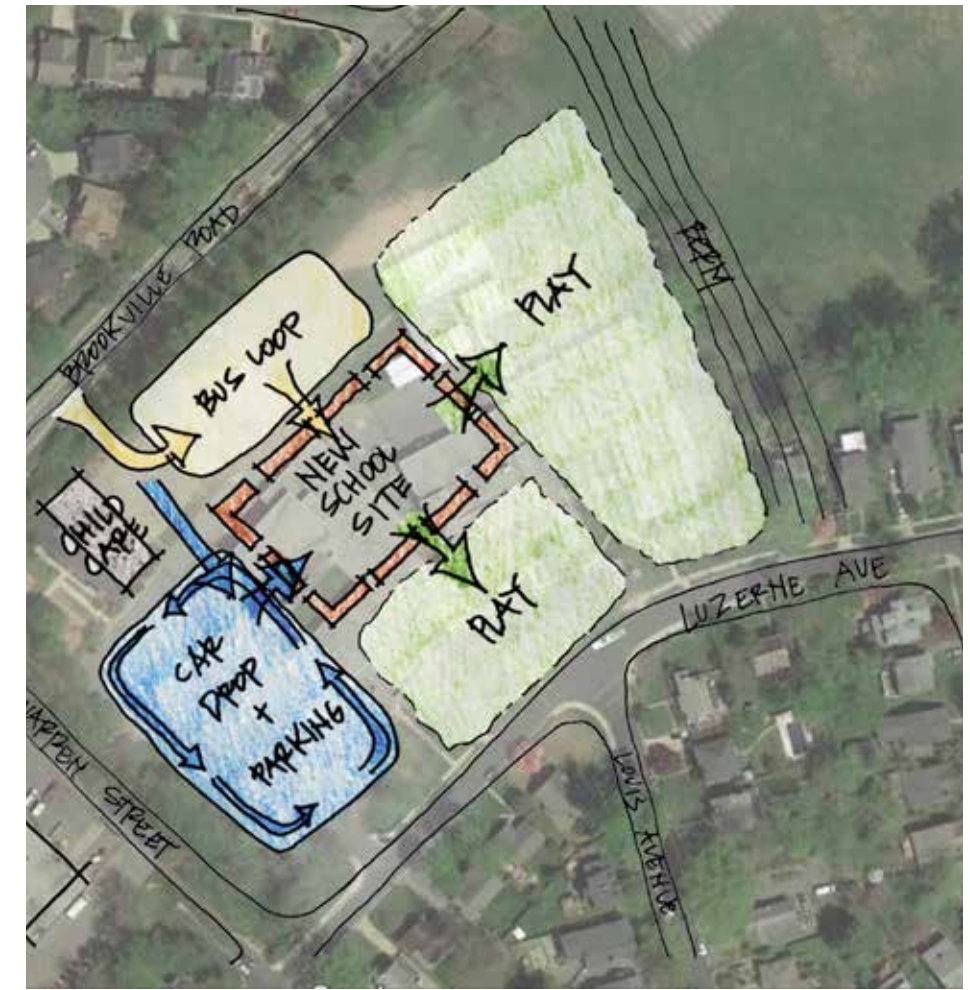
A1



A2



A3



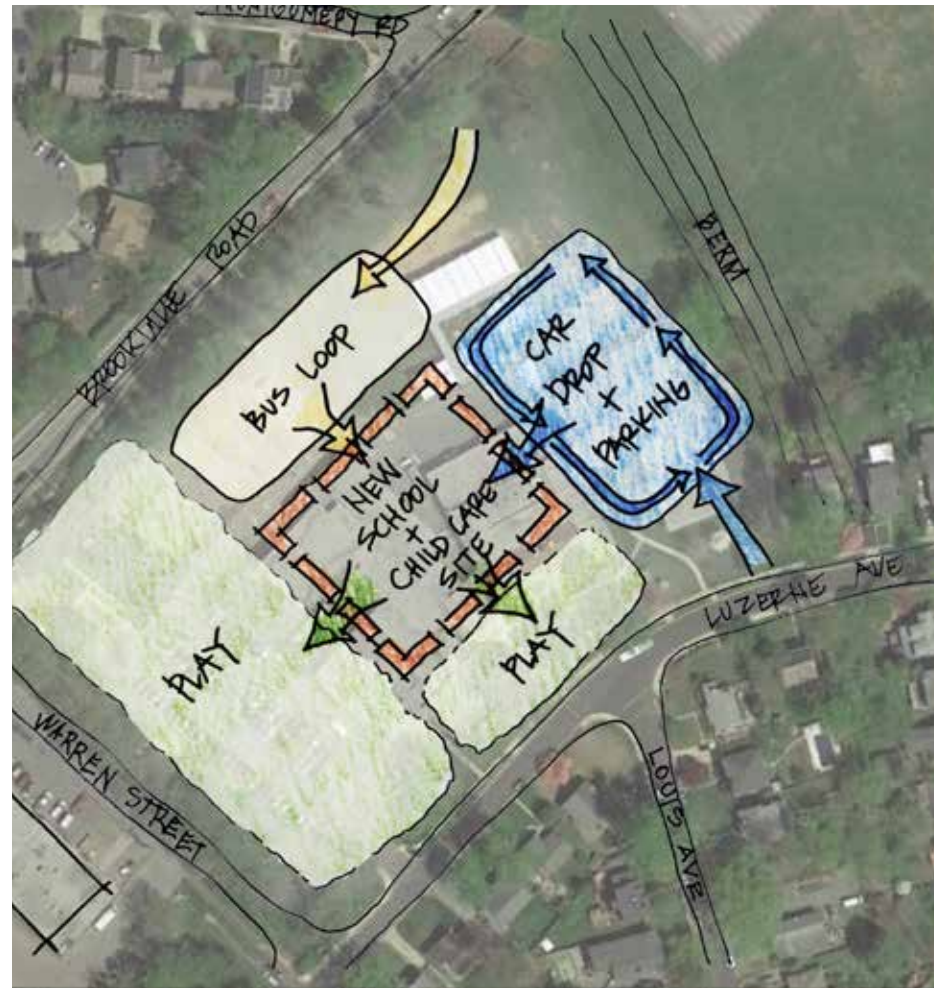


# B SCHEMES

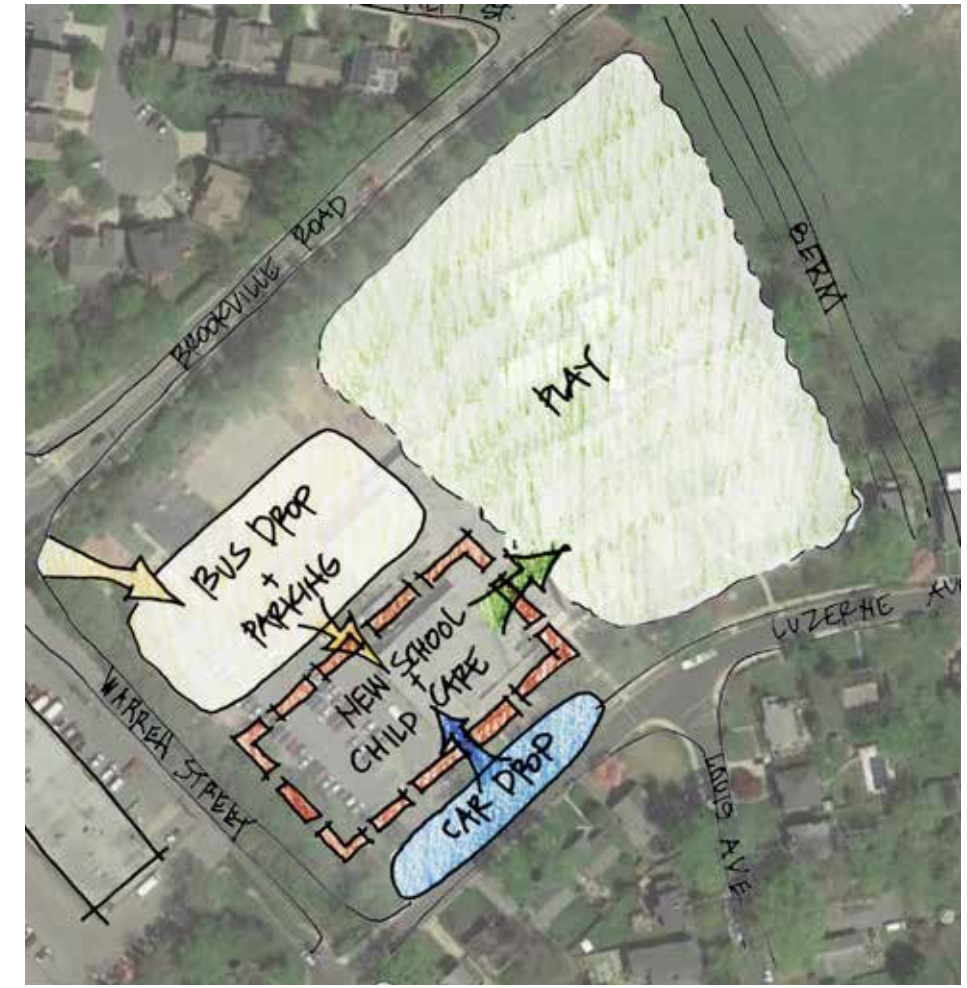
## B1



## B2



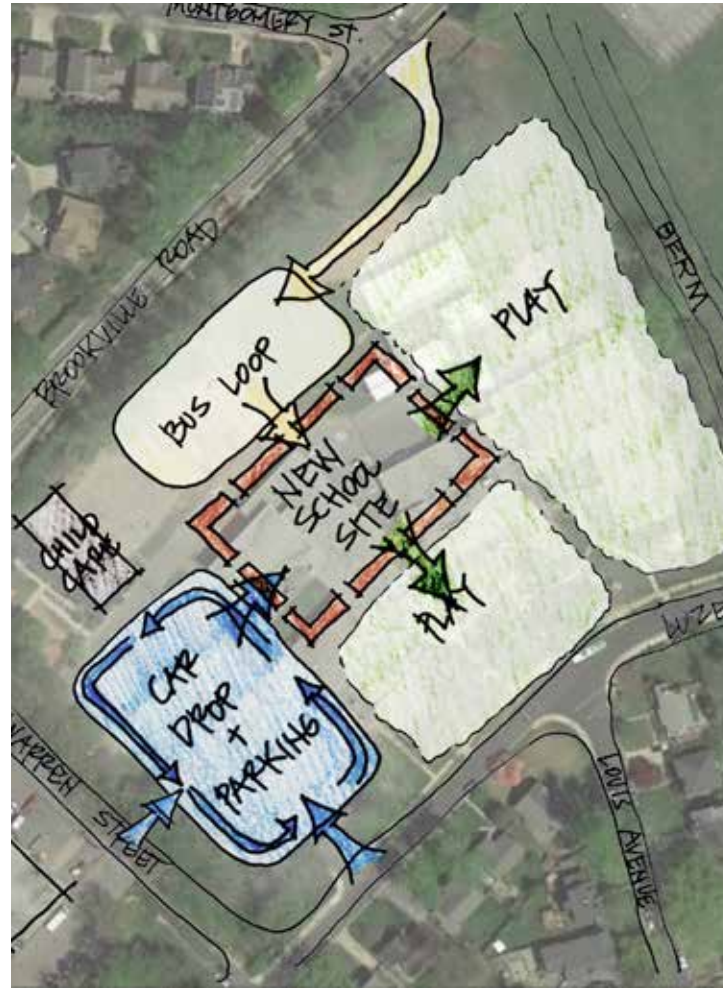
## B3



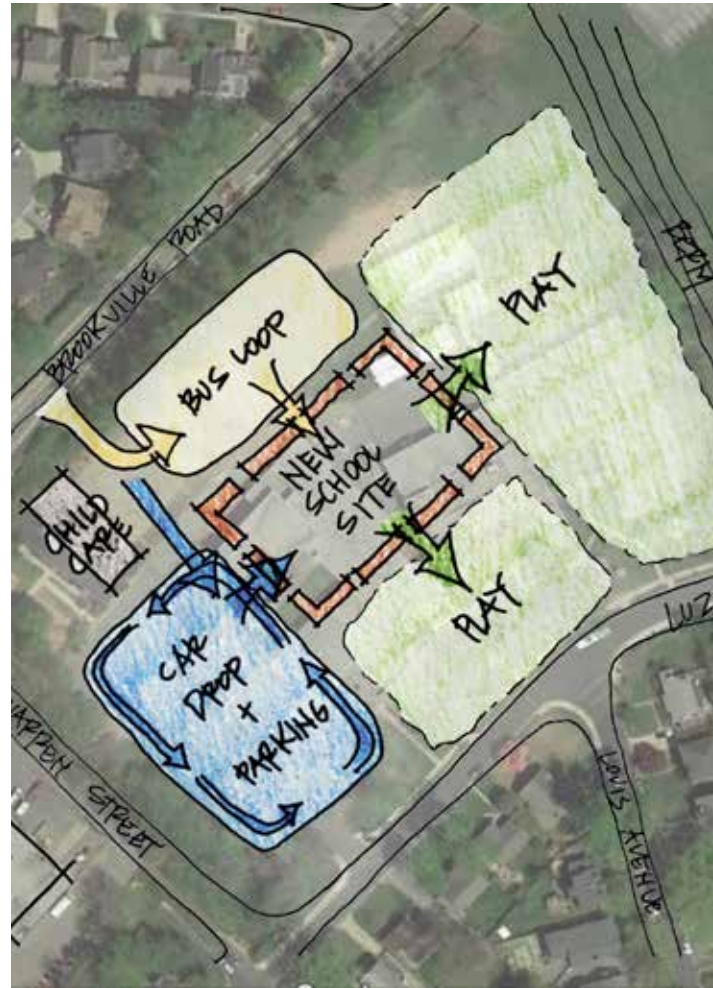


# PREFERRED SCHEMES

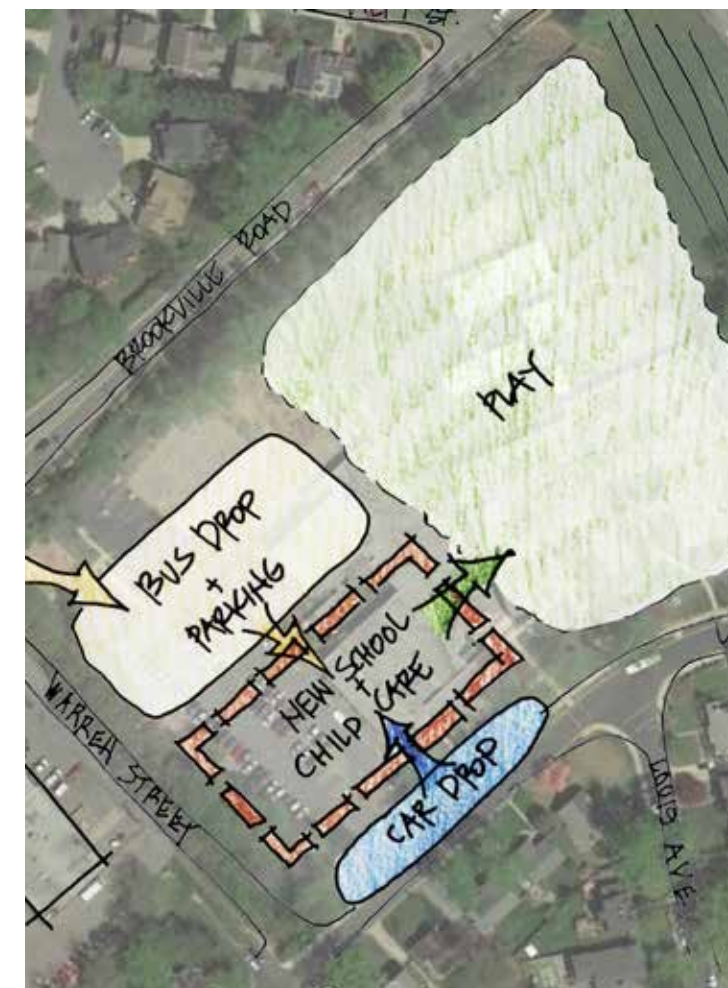
## A2



## A3



## B3



- » THE GREEN SPACE IS INVITING
- » SCHEMES A2 & A3 ALLOW EXISTING TREES TO REMAIN.
- » B3 REQUIRES MINIMAL TREE REMOVAL.
- » CONCENTRATED PLAY AREAS SIMPLIFY MONITORING STUDENTS.

- » PARKING AWAY FROM THE NEIGHBORHOOD SIDE IS PREFERRED.
- » THE GROUP FAVORED KEEPING THE BUSES OFF OF LUZERNE.



# INITIAL DESIGN CONCEPTS

---



# REFINED DESIGN CONCEPT

---



# NEXT STEPS

---

- » DISCUSS WHAT WE HEARD TODAY
- » CONTINUE TO DEVELOP THE CONCEPT
- » COME BACK TO THE COMMUNITY AT A LATER DATE



CONTENT WILL BE AVAILABLE JUNE 25TH 2020

WEBSITE:

[HTTPS://WWW.MONTGOMERYSCHOOLSMD.ORG/DEPARTMENTS/FACILITIES/CONSTRUCTION/PROJECT/WOODLINES.ASPX](https://www.montgomeryschoolsmd.org/departments/facilities/construction/project/woodlines.aspx)

PROJECT CONTACT: KENNETH FUTCH

PROJECT MANAGER

MCPS – DIVISION OF CONSTRUCTION

EMAIL: [KENNETH\\_R\\_FUTCH@MCPSMD.ORG](mailto:KENNETH_R_FUTCH@MCPSMD.ORG)

OFFICE: (240) 314 – 1000

DIRECT: (240) 314 – 1015