

Chapter 10

Finance

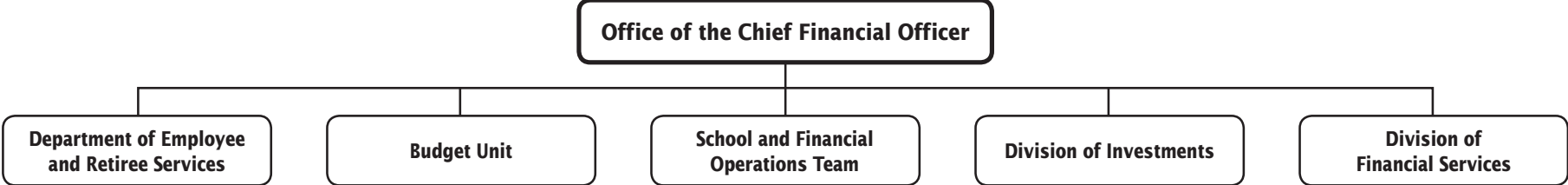
	PAGE
Office of the Chief Financial Officer	10-3
Budget Unit.....	10-3
School and Financial Operations Team	10-3
Division of Financial Services.....	10-7
Department of Employee and Retiree Services	10-10



Finance
Summary of Resources
By Object of Expenditure

OBJECT OF EXPENDITURE	FY 2018 ACTUAL	FY 2019 BUDGET	FY 2019 CURRENT	FY 2020 REQUEST	FY 2020 APPROVED	FY 2020 CHANGE
POSITIONS						
Administrative	7.750	7.750	7.750	7.750	7.750	
Business/Operations Admin.	7.750	6.750	6.750	6.750	6.750	
Professional						
Supporting Services	55.750	56.500	56.500	58.250	58.250	1.750
TOTAL POSITIONS	71.250	71.000	71.000	72.750	72.750	1.750
01 SALARIES & WAGES						
Administrative	\$1,212,412	\$1,128,736	\$1,128,736	\$1,143,125	\$1,150,697	\$21,961
Business/Operations Admin.	642,254	692,690	692,690	716,903	721,843	29,153
Professional						
Supporting Services	3,880,899	4,316,889	4,316,889	4,399,917	4,489,769	172,880
TOTAL POSITION DOLLARS	5,735,565	6,138,315	6,138,315	6,259,945	6,362,309	223,994
OTHER SALARIES						
Administrative						
Professional		72,730	72,730	71,957	71,957	(773)
Supporting Services	1,684,703	4,377,905	4,377,905	4,373,865	4,373,865	(4,040)
TOTAL OTHER SALARIES	1,684,703	4,450,635	4,450,635	4,445,822	4,445,822	(4,813)
TOTAL SALARIES AND WAGES	7,420,268	10,588,950	10,588,950	10,705,767	10,808,131	219,181
02 CONTRACTUAL SERVICES	122,383	1,143,125	836,217	836,217	835,913	(304)
03 SUPPLIES & MATERIALS	134,391	1,111,128	1,111,128	1,104,328	1,104,632	(6,496)
04 OTHER						
Local/Other Travel	93	2,359	2,359	4,459	4,459	2,100
Insur & Employee Benefits	556,523,987	581,855,429	581,855,429	581,513,106	582,394,597	539,168
Utilities						
Miscellaneous	588,928	1,814,388	1,814,388	1,815,088	1,815,088	700
TOTAL OTHER	557,113,008	583,672,176	583,672,176	583,332,653	584,214,144	541,968
05 EQUIPMENT		12,511	12,511	14,011	14,011	1,500
GRAND TOTAL AMOUNTS	\$564,790,050	\$596,220,982	\$596,220,982	\$595,992,976	\$596,976,831	\$755,849

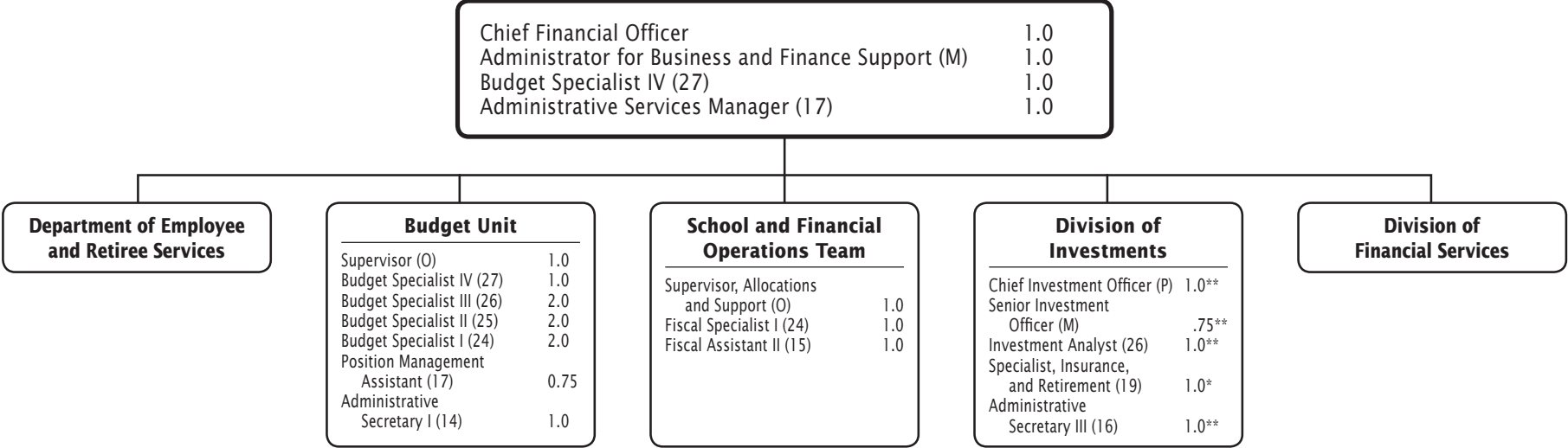
Finance—Overview



F.T.E. Positions 72.75

* In addition, there are 19.5 positions funded by the Employee Benefits Trust Fund and 3.25 positions funded by the Employee Pension fund. These non-operating budget positions are noted on other charts in this chapter.

Office of the Chief Financial Officer



F.T.E. Positions 16.75
 * In addition, the chart includes 1.0 position funded by the Employee Benefits Trust Fund and 3.75 positions funded by the Employee Pension fund.

Office of the Chief Financial Officer - 312/336/798

Description	FY 2018 Actual	FY 2019 Budget	FY 2019 Current	FY 2020 Request	FY 2020 Approved	FY 2020 Change
01 Salaries & Wages						
Total Positions (FTE)	16,750	16,750	16,750	16,750	16,750	
Position Salaries	\$1,609,262	\$1,707,673	\$1,707,673	\$1,733,660	\$1,741,658	\$33,985
Other Salaries						
Summer Employment						
Professional Substitutes						
Stipends						
Professional Part Time		72,730	72,730	71,957	71,957	(773)
Supporting Services Part Time		161,991	161,991	146,596	146,596	(15,395)
Other						
Subtotal Other Salaries	46,769	234,721	234,721	218,553	218,553	(16,168)
Total Salaries & Wages	1,656,031	1,942,394	1,942,394	1,952,213	1,960,211	17,817
02 Contractual Services						
Consultants						
Other Contractual		55,304	55,304	55,304	55,000	(304)
Total Contractual Services	68,281	55,304	55,304	55,304	55,000	(304)
03 Supplies & Materials						
Textbooks						
Media						
Instructional Supplies & Materials						
Office		17,248	17,248	15,448	15,752	(1,496)
Other Supplies & Materials		21,357	21,357	21,357	21,357	
Total Supplies & Materials	17,018	38,605	38,605	36,805	37,109	(1,496)
04 Other						
Local/Other Travel		309	309	2,109	2,109	1,800
Insur & Employee Benefits						
Utilities						
Miscellaneous		68,200	68,200	62,200	62,200	(6,000)
Total Other	64,578	68,509	68,509	64,309	64,309	(4,200)
05 Equipment						
Leased Equipment						
Other Equipment				1,500	1,500	1,500
Total Equipment				1,500	1,500	1,500
Grand Total	\$1,805,908	\$2,104,812	\$2,104,812	\$2,110,131	\$2,118,129	\$13,317

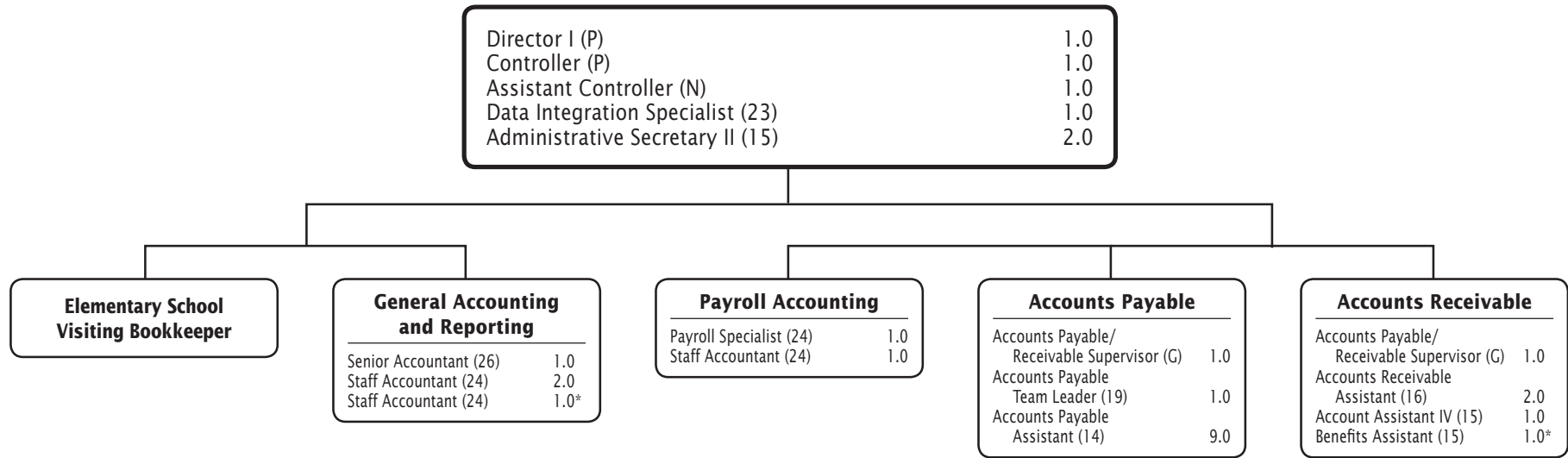
Office of the Chief Financial Officer - 312/336/798

CAT	DESCRIPTION	10 Mon	FY 2018 ACTUAL	FY 2019 BUDGET	FY 2019 CURRENT	FY 2020 REQUEST	FY 2020 APPROVED	FY 2020 CHANGE
	312 Office of Chief Financial Officer							
1	Chief Financial Officer		1.000	1.000	1.000	1.000	1.000	
1	M Admin for Business and Finance						1.000	1.000
2	M Admin for Business and Finance					1.000		
1	27 Management & Budget Spec IV		1.000	1.000	1.000	1.000	1.000	
1	17 Admin Services Manager I		1.000	1.000	1.000	1.000	1.000	
	Subtotal		3.000	3.000	3.000	4.000	4.000	1.000
	336 Budget Unit							
1	O Supervisor		1.000	1.000	1.000	1.000	1.000	
1	27 Management & Budget Spec IV		1.000	1.000	1.000	1.000	1.000	
1	26 Management & Budget Spec III		2.000	2.000	2.000	2.000	2.000	
1	25 Management & Budget Spec II		2.000	2.000	2.000	2.000	2.000	
1	24 Management & Budget Spec I		2.000	2.000	2.000	2.000	2.000	
1	17 Position Management Assistant		.750	.750	.750	.750	.750	
1	14 Administrative Secretary I		1.000	1.000	1.000	1.000	1.000	
	Subtotal		9.750	9.750	9.750	9.750	9.750	
	798 K-12 and Financial Operations Team							
2	O Supervisor		1.000	1.000	1.000	1.000	1.000	
2	M Admin for Business and Finance		1.000	1.000	1.000			(1.000)
2	24 Fiscal Specialist I		1.000	1.000	1.000	1.000	1.000	
2	15 Fiscal Assistant II		1.000	1.000	1.000	1.000	1.000	
	Subtotal		4.000	4.000	4.000	3.000	3.000	(1.000)
	Total Positions		16.750	16.750	16.750	16.750	16.750	

Provision for Future Supported Projects - 999

Description	FY 2018 Actual	FY 2019 Budget	FY 2019 Current	FY 2020 Request	FY 2020 Approved	FY 2020 Change
01 Salaries & Wages						
Total Positions (FTE) Position Salaries						
Other Salaries						
Summer Employment						
Professional Substitutes						
Stipends						
Professional Part Time						
Supporting Services Part Time						
Other		3,894,256	3,894,256	3,884,256	3,884,256	(10,000)
Subtotal Other Salaries	1,505,503	3,894,256	3,894,256	3,884,256	3,884,256	(10,000)
Total Salaries & Wages	1,505,503	3,894,256	3,894,256	3,884,256	3,884,256	(10,000)
02 Contractual Services						
Consultants						
Other Contractual		762,328	762,328	762,328	762,328	
Total Contractual Services	43,695	762,328	762,328	762,328	762,328	
03 Supplies & Materials						
Textbooks						
Media						
Instructional Supplies & Materials						
Office						
Other Supplies & Materials		1,002,525	1,002,525	1,002,525	1,002,525	
Total Supplies & Materials	63,264	1,002,525	1,002,525	1,002,525	1,002,525	
04 Other						
Local/Other Travel						
Insur & Employee Benefits						
Utilities						
Miscellaneous		1,071,497	1,071,497	1,081,497	1,081,497	10,000
Total Other	285,021	1,071,497	1,071,497	1,081,497	1,081,497	10,000
05 Equipment						
Leased Equipment						
Other Equipment		598	598	598	598	
Total Equipment		598	598	598	598	
Grand Total	\$1,897,483	\$6,731,204	\$6,731,204	\$6,731,204	\$6,731,204	

Division of Financial Services



CHAPTER 10 - 7 FINANCE

F.T.E. Positions 26.0

*In addition, the chart includes 2.0 positions funded by the Employee Benefits Trust Fund.

FY 2020 OPERATING BUDGET

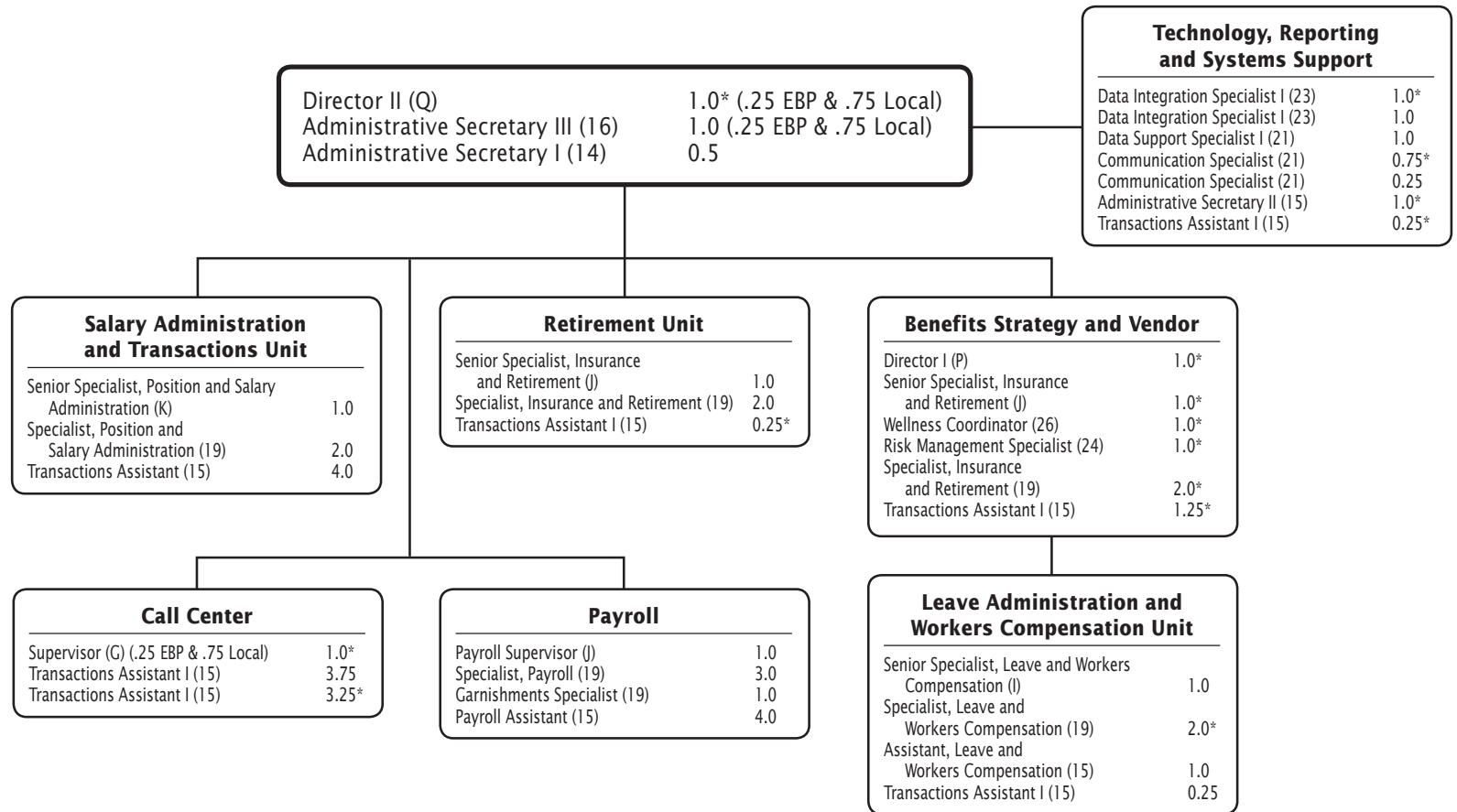
Division of Financial Services - 340/332

Description	FY 2018 Actual	FY 2019 Budget	FY 2019 Current	FY 2020 Request	FY 2020 Approved	FY 2020 Change
01 Salaries & Wages						
Total Positions (FTE)	25.500	25.500	25.500	26.000	26.000	.500
Position Salaries	\$2,026,948	\$2,192,039	\$2,192,039	\$2,251,242	\$2,333,540	\$141,501
Other Salaries						
Summer Employment						
Professional Substitutes						
Stipends						
Professional Part Time						
Supporting Services Part Time		12,879	12,879	13,008	13,008	129
Other		286,609	286,609	274,613	274,613	(11,996)
Subtotal Other Salaries	112,860	299,488	299,488	287,621	287,621	(11,867)
Total Salaries & Wages	2,139,808	2,491,527	2,491,527	2,538,863	2,621,161	129,634
02 Contractual Services						
Consultants						
Other Contractual		3,000	3,000	3,000	3,000	
Total Contractual Services	3,000	3,000	3,000	3,000	3,000	
03 Supplies & Materials						
Textbooks						
Media						
Instructional Supplies & Materials						
Office		16,691	16,691	19,691	19,691	3,000
Other Supplies & Materials		14,500	14,500	14,500	14,500	
Total Supplies & Materials	27,124	31,191	31,191	34,191	34,191	3,000
04 Other						
Local/Other Travel		564	564	864	864	300
Insur & Employee Benefits						
Utilities						
Miscellaneous		-55,309	-55,309	-58,609	-58,609	(3,300)
Total Other	-51,666	-54,745	-54,745	-57,745	-57,745	(3,000)
05 Equipment						
Leased Equipment		11,913	11,913	11,913	11,913	
Other Equipment						
Total Equipment		11,913	11,913	11,913	11,913	
Grand Total	<u>\$2,118,266</u>	<u>\$2,482,886</u>	<u>\$2,482,886</u>	<u>\$2,530,222</u>	<u>\$2,612,520</u>	<u>\$129,634</u>

Division of Financial Services - 340/332

CAT	DESCRIPTION	10 Mon	FY 2018 ACTUAL	FY 2019 BUDGET	FY 2019 CURRENT	FY 2020 REQUEST	FY 2020 APPROVED	FY 2020 CHANGE
	340 Division of Financial Services							
1	P Director I		1.000	1.000	1.000	1.000	1.000	
1	26 Senior Accountant			1.000	1.000	1.000	1.000	
1	24 Staff Accountant			2.000	2.000	2.000	2.000	
1	16 Administrative Secretary III		.500	.500	.500			(.500)
1	15 Administrative Secretary II					1.000	1.000	1.000
	Subtotal		1.500	4.500	4.500	5.000	5.000	.500
	332 Division of Controller							
1	P Controller		1.000	1.000	1.000	1.000	1.000	
1	N Assistant Controller		1.000	1.000	1.000	1.000	1.000	
1	G Accts Payable/Receivable Supv		2.000	2.000	2.000	2.000	2.000	
1	26 Senior Accountant		1.000					
1	24 Payroll Specialist		1.000	1.000	1.000	1.000	1.000	
1	24 Staff Accountant		3.000	1.000	1.000	1.000	1.000	
1	23 Data Integration Specialist		1.000	1.000	1.000	1.000	1.000	
1	19 Accts Payable Team Leader		1.000	1.000	1.000	1.000	1.000	
1	16 Accounts Receivable Assistant		2.000	2.000	2.000	2.000	2.000	
1	15 Administrative Secretary II		1.000	1.000	1.000	1.000	1.000	
2	15 Account Assistant IV		1.000	1.000	1.000	1.000	1.000	
1	14 Accounts Payable Assistant		9.000	9.000	9.000	9.000	9.000	
	Subtotal		24.000	21.000	21.000	21.000	21.000	
	Total Positions		25.500	25.500	25.500	26.000	26.000	.500

Department of Employee and Retiree Services



F.T.E. Positions 30.0

* In addition, the chart includes 16.5 positions funded by the Employee Benefits Trust Fund.

Department of Employee and Retiree Services - 334/333

Description	FY 2018 Actual	FY 2019 Budget	FY 2019 Current	FY 2020 Request	FY 2020 Approved	FY 2020 Change
01 Salaries & Wages						
Total Positions (FTE)	29.000	28.750	28.750	30.000	30.000	1.250
Position Salaries	\$2,099,355	\$2,238,603	\$2,238,603	\$2,275,043	\$2,287,111	\$48,508
Other Salaries						
Summer Employment						
Professional Substitutes						
Stipends						
Professional Part Time						
Supporting Services Part Time		10,105	10,105	35,206	35,206	25,101
Other		12,065	12,065	20,186	20,186	8,121
Subtotal Other Salaries	19,571	22,170	22,170	55,392	55,392	33,222
Total Salaries & Wages	2,118,926	2,260,773	2,260,773	2,330,435	2,342,503	81,730
02 Contractual Services						
Consultants						
Other Contractual		15,585	15,585	15,585	15,585	
Total Contractual Services	7,407	15,585	15,585	15,585	15,585	
03 Supplies & Materials						
Textbooks						
Media						
Instructional Supplies & Materials						
Office		38,807	38,807	30,807	30,807	(8,000)
Other Supplies & Materials						
Total Supplies & Materials	26,985	38,807	38,807	30,807	30,807	(8,000)
04 Other						
Local/Other Travel		1,486	1,486	1,486	1,486	
Insur & Employee Benefits		581,855,429	581,855,429	581,513,106	582,394,597	539,168
Utilities						
Miscellaneous		730,000	730,000	730,000	730,000	
Total Other	556,815,075	582,586,915	582,586,915	582,244,592	583,126,083	539,168
05 Equipment						
Leased Equipment						
Other Equipment						
Total Equipment						
Grand Total	<u>\$558,968,393</u>	<u>\$584,902,080</u>	<u>\$584,902,080</u>	<u>\$584,621,419</u>	<u>\$585,514,978</u>	<u>\$612,898</u>

Department of Employee and Retiree Services - 334/333

CAT	DESCRIPTION	10 Mon	FY 2018 ACTUAL	FY 2019 BUDGET	FY 2019 CURRENT	FY 2020 REQUEST	FY 2020 APPROVED	FY 2020 CHANGE
1	Q Director II		.750	.750	.750	.750	.750	
1	K Sr Spec Pos & Sal Admin		1.000	1.000	1.000	1.000	1.000	
1	K ERSC Call Ctr/Transaction Supv		1.000					
1	J Payroll Supervisor		1.000	1.000	1.000	1.000	1.000	
1	J Sr Spec Insurance/Retirement		1.000	1.000	1.000	1.000	1.000	
1	I Sr Spec Leave/Wkrs Com		1.000	1.000	1.000	1.000	1.000	
1	G ERSC Call Ctr/Trans Asst Supv		.750	.750	.750	.750	.750	
1	23 Data Integration Specialist		1.000	1.000	1.000	1.000	1.000	
1	21 Comm Spec/Web Producer		.250	.250	.250	.250	.250	
1	21 Data Support Specialist I		1.000	1.000	1.000	1.000	1.000	
1	19 Garnishments Specialist		1.000	1.000	1.000	1.000	1.000	
1	19 Specialist, Payroll		2.000	3.000	3.000	3.000	3.000	
1	19 Spec, Position/Salary Admin		2.000	2.000	2.000	2.000	2.000	
1	19 Specialist, Ins. & Retirement		2.000	2.000	2.000	2.000	2.000	
1	16 Administrative Secretary III		1.000	.750	.750	.750	.750	
1	15 Transactions Assistant I		7.250	7.250	7.250	8.000	8.000	.750
1	15 Payroll Assistant		4.000	4.000	4.000	4.000	4.000	
1	15 Assist, Leave Admin/Wkrs Comp		1.000	1.000	1.000	1.000	1.000	
1	14 Administrative Secretary I					.500	.500	.500
	Total Positions		29.000	28.750	28.750	30.000	30.000	1.250